



**RECEIVED**

By Sergio Bosques at 4:49 pm, Apr 06, 2018

April 4, 2018

Eng. Sergio Bosques  
Regional Storm Water Coordinator  
Caribbean Environmental Protection Division  
City View Plaza II-Suite 7000  
#48 Rd. 165 km 1.2  
Guaynabo, PR 00968-8069

**RE: NOTICE OF INTENT – NOI - MUNICIPALITY OF CIDRA, FOR STORM  
WATER DISCHARGES FROM SMALL MS4 IN URBANIZED AREAS**

As required by the Clean Water Act. Section 402 (p), the Autonomous Municipality of Cidra, submitted a Notice of Intent (NOI) in reference to the NPDES Permit no. PRR040020, on April 19, 2017.

Subsequently, on March 8, 2018 we received a request for additional information pertaining to Sections PART B – Location of the SWMP and PART F – Bylaw / Ordinance Development (See copy of email, attached).

We have included a revised copy of the NOI containing all of the additional information, as required by your office. This newly revised version replaces the NOI submitted on April 19, 2017.

We hope that this information adequately complies with all the EPA requirements and will help to advance the agency's final determination for the ensuing publication of the document on the EPA website.

For any additional information, please contact Tamara González Rivera - Planning Office Director, Autonomous Municipality of Cidra at the following phone number and email address 787-434-1400 x 3200 or via e-mail at [oot@cidra.gov.pr](mailto:oot@cidra.gov.pr).

Sincerely,

  
Javier E. Carrasquillo Cruz, Mayor  
Mayor

Included,  
Revised Notice of Intent, April 3, 2018

AUTONOMOUS MUNICIPALITY OF CIDRA  
PO BOX 729  
CIDRA PR 00739

NOTICE OF INTENT  
NATIONAL POLLUTANT DISCHARGE ELIMINATION SYSTEM (NPDES) PHASE II,  
REGULATED SMALL MUNICIPAL SEPARATED STORM SEWER SYSTEMS (MS4's)

INDIVIDUAL PERMIT

AUTONOMOUS MUNICIPALITY OF CIDRA  
EPA REGION 2 PUERTO RICO

PREPARED BY  
AUTONOMOUS MUNICIPALITY OF CIDRA

United States Environmental Protection Agency  
National Pollutant Discharge Elimination System  
Notice of Intent (NOI) for coverage under the Small Municipal Separate  
Storm Sewer System (MS4) General Permit (PRR040000) for Puerto Rico

**Part A. General Information**

1. Name of Municipality or Organization: Autonomous Municipal of Cidra
2. Type:  Federal  State  Municipality  Other: \_\_\_\_\_
3. Existing Permittee:  Yes  No If yes, provide EPA NPDES Permit Number: P R R 0 4 0020
4. Location Address:
  - a. Street: Road PR-172, Km. 12.7, Pueblo Ward
  - b. City: Cidra State: PR Zip Code: 00739
5. Mailing Address:
  - a. Street: PO Box 729
  - b. City: Cidra State: PR Zip Code: 00739
6. Telephone Number: 787-434-1400 (Ext 3200) Fax: \_\_\_\_\_
7. E-mail: oot@cidra.gov.pr
8. Standard Industrial Classification (SIC) Code (see instructions for common codes): 9199 \_\_ \_\_
9. Latitude: (use the format provided.) Longitude: (use the format provided.)  
*Approximate center of the regulated portion of the MS4.*

18° 16' 58" N (degrees, minutes, seconds)

66° 09' 31" W (degrees, minutes, seconds)

Or

18.1763° N (degrees decimal)

-66.1586° W (degrees decimal)

**Part B. Primary MS4 Program Manager Contact Information**

1. Name: Tamara Gonzalez Rivera
2. Position Title: Planning Office Director
3. Stormwater Management Program (SWMP) Location (web address or physical location): Anexo North, Second Floor, Centro de Gobierno, Cidra
4. Mailing Address:
  - a. Street: PO Box 729
  - b. City: Cidra State: PR Zip Code: 00739-0729



5. Telephone Number: 787-434-1400 Ext. 3200

6. E-mail: oot@cidra.gov.pr

**Part C. Eligibility Determination**

1. Endangered Species Act (ESA) determination complete?  Yes  No  
a. Eligibility Criteria (check all that apply):  A  B  C  D  E  F
2. National Historic Preservation Act (NHPA) determination complete?  Yes  No  
a. Eligibility Criteria (check all that apply):  A  B  C  D

**Part D. Map/Boundaries**

1. MS4/Organization Description of regulated boundaries (narrative):  
The Municipality of Cidra has a territorial extension of 36.1 square miles. Its located in the central region of the island  
Of Puerto Rico. Municipal Boundary at North with Cayey, South with Comerio and Aguas Buenas, East with Aibonito and  
Barranquitas and West with Caguas. Cidra's Lake has superficial area of 110.5 acres (0.1727 square miles).
2. Location Map/Boundaries. A location map must be attached showing the pertinent city, town, wards, or boundaries, the boundaries of the Small MS4, including surface water body(s), and the "urbanized area" (UA) when applicable.  
Is map attached?  Yes  No

**Part E. MS4 Infrastructure** (if covered under the 2006 general permit)

1. Estimated Percent of Outfall Map Complete? (Part 4.2.3 of 2006 general permit): 80%  
a. If 100% of 2006 requirements are not met, enter an estimated date of completion: 12/12/2020  
(MM/DD/YYYY)  
b. Web address where MS4 map is published: Refer to Appendix  
*If outfall map is unavailable on the internet an electronic or paper copy of the outfall map must be included with NOI submission.*

**Part F. Bylaw/Ordinance Development** (if covered under the 2006 general permit)

1. Illicit Discharge Detection and Elimination (IDDE) authority adopted?  Yes  No  
a. Effective Date or Estimated Date of Adoption: 03/21/2018  
(MM/DD/YYYY)

United States Environmental Protection Agency  
National Pollutant Discharge Elimination System  
Notice of Intent (NOI) for coverage under the Small Municipal Separate  
Storm Sewer System (MS4) General Permit (PRR040000) for Puerto Rico

2. Construction/Erosion and Sediment Control authority adopted?  Yes  No

a. Effective Date or Estimated Date of Adoption: 03/21/2018  
(MM/DD/YYYY)

3. Post-Construction Stormwater Management adopted?  Yes  No

a. Effective Date or Estimated Date of Adoption: 03/21/2018  
(MM/DD/YYYY)

**Part G. Receiving Waters**

List the names of all surface waterbody segments to which your MS4 discharges. For each waterbody segment, please report the number of outfalls discharging into it and, if applicable, any impairments. You may attach additional information.

Waterbody Segment that receives flow from the MS4	Number of Outfalls into receiving waterbody segment	Have any monitoring been performed to outfalls? (Yes/No)	List of Pollutant(s) causing impairment (if applicable)	List of TMDL Pollutant (s) (if any)
Cidra Lake	51	NO	Cyanide Thermal modificate Total coliform Turbidity	LOD – Low Oxygen Dissolved
Arroyata River	74	NO	Cyanide Total coliform Turbidity	LOD – Low Oxygen Dissolved
Clavijo River	10	NO	Cyanide Total coliform Turbidity	LOD – Low Oxygen Dissolved
Bayamón River	14	NO	Cyanide Total coliform Turbidity	LOD – Low Oxygen Dissolved
La Plata River	45	NO	Cyanide Total coliform Turbidity	LOD – Low Oxygen Dissolved
Sabana River	9	NO	Cyanide Total coliform Turbidity	LOD – Low Oxygen Dissolved

United States Environmental Protection Agency  
National Pollutant Discharge Elimination System  
Notice of Intent (NOI) for coverage under the Small Municipal Separate  
Storm Sewer System (MS4) General Permit (PRR040000) for Puerto Rico

**Part H. Summary of Stormwater Management Program (SWMP) under the 2006 Small MS4 General Permit**

For every measurable goal and associated Best Management Practice (BMP) listed in the adopted program, provide the following information (You may include additional pages):

BMP Description or BMP ID (e.g. MCM-1)	Goal Achieved? (Yes/No)	Continued in next permit cycle? (Yes/No)	Who was the targeted audience? Explain reason for not achieving goal.	Modification(s) to goals or BMP for next permit cycle
Financial Human Resource	No	Yes	Municipal Manages and Staffers	In Progress
Education	No	Yes	Community leaders. The lack of founding and staff to complete the task.	In Progress (50%)
Public Works	Yes	Yes	Public Works Staffers	In Progress
Community Education	Yes	Yes	General Public	In Progress
Security Education	No	Yes	Municipal Police	In Progress
Progress Reports	No	Yes	Lack of adequate personal to accomplish the task.	In Progress (15%)
Establish selective monitoring spots for wastewater discharge	Yes	Yes	The Monitoring spots were identified.	The next steps to start the monitoring of wastewater.
Evaluate the possibilities of establishing municipal legislation to detect violations to enforce the overall program a periodical progress bulletin report related to the project	Yes	Yes	The ordinance was completed and it is pending o approval by the Municipal Legislature.	This task be completed in the first 12 month of the next cycle.



United States Environmental Protection Agency  
National Pollutant Discharge Elimination System  
Notice of Intent (NOI) for coverage under the Small Municipal Separate  
Storm Sewer System (MS4) General Permit (PRR040000) for Puerto Rico

**Part I. 2016 Stormwater Management Program (SWMP) Summary**

BMP Description or BMP ID (e.g. MCM-1)	Education Topic (Identify the issue your BMP is educating the public about.)	Outreach Method (Describe the method used to convey this topic, e.g. mailing, events, school, etc.)	Measurable Goal (What is the end result of this program? What indicator will determine the goal has been met? (e.g., number mailing sent, people at event, class participation, etc.)
Storm Drain Stenciling Program.	Non-Point Sources and Illegal Discharges.	Storm Drains Stenciling.	Number of storm water inlets to be scheduled on next year 2018.
Annual cleanup	Non-Point Sources.	Volunteer and residents participation.	Number of tons of debris and recyclables collected during the cleanup events. The target is to collect 1 ton per year but to reduce the amount based in the success of the program.
Public Education Program	Illegal discharge, Non-Point Sources and Erosion Control.	Public Meetings, School lectures.	Number of residents attending the events, target 200 students every year city-wide.
Community Hotline.	Illegal Discharges, Non-Point Sources.	Thru the general outreach activities, the Municipality encourages the use of hotline to address the problems.	Number of calls and referrals to correct illegal discharges and non-point sources of pollution.
Social media Education Campaign.	Illegal Discharges, Non-Point Sources and Erosion Control.	Posting of educational clips and messages in Facebook, Twitter, Instagram and Snapchat.	Number of messages distributed, shared and view on a weekly basis.

United States Environmental Protection Agency  
National Pollutant Discharge Elimination System  
Notice of Intent (NOI) for coverage under the Small Municipal Separate  
Storm Sewer System (MS4) General Permit (PRR040000) for Puerto Rico

**Part I. 2016 Stormwater Management Program (SWMP) Summary (continued)**

Public Involvement and Participation (See Part 2.4.3 for detailed information of required BMPs):

BMP Description or BMP ID (e.g. MCM-1)	Program Description (Describe the program and how it will inspire public participation, e.g. special events, volunteer sampling and monitoring efforts, household hazardous waste recycling, etc.)	Measurable Goal (What is the end result of this program? What indicator will determine the goal has been met? (e.g., participation, amount of sampling performed, waste collected, etc.)
Storm Sewer System Map	The Municipality is required to develop an Inventory of all municipal storm water infrastructures.	Create a map inventory of the entire storm water infrastructure in the urban area of the Municipality. (100%)
Implement Regulations to Enforce Non-Storm Discharges.	The Municipality will start train its employees and implements the approved ordinance throughout its territory.	It's expected to star in mid 2017 Reduction in illicit discharges and connections.
Meet with local community Group and Organizations to involve them in Storm water Efforts	The Municipality proposes the use of public meeting through the community as a mean to request their involvement in the efforts coordinated by the administration.	The number of volunteers and the total number of communities covered during the public meetings.
Develop and conduct periodical focus group to discuss the current issues related to pollution from waters.	The Municipality proposes the use of focus group through the community as a mean to request their involvement in the efforts coordinated by the administration.	The number of volunteers participating during the focus groups and the number of issues identified and fixed.
Conduct Public Hearings to address storm water issues	The Municipality proposes conducting a yearly Public Hearing to address the most pressing issues related to pollution from storm water.	The number of participants and issues identified and resolved as a result from the Public Hearing.

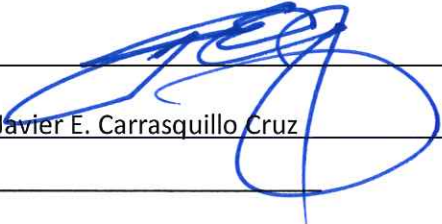


United States Environmental Protection Agency  
National Pollutant Discharge Elimination System  
Notice of Intent (NOI) for coverage under the Small Municipal Separate  
Storm Sewer System (MS4) General Permit (PRR040000) for Puerto Rico

**Part J. Application Certification and Signature**

I certify under penalty of law that this document and all attachments were prepared under my direction or supervision in accordance with a system designed to assure that qualified personnel properly gathered and evaluated the information submitted. Based on my inquiry of the person or persons who manage the system, or those persons directly responsible for gathering the information, the information submitted is, to the best of my knowledge and belief, true, accurate, and complete. I am aware that there are significant penalties for submitting false information, including the possibility of fine and imprisonment for knowing violations.

Signature of Mayor/Elected Official: \_\_\_\_\_



Print Name of Mayor/Elected Official: Javier E. Carrasquillo Cruz

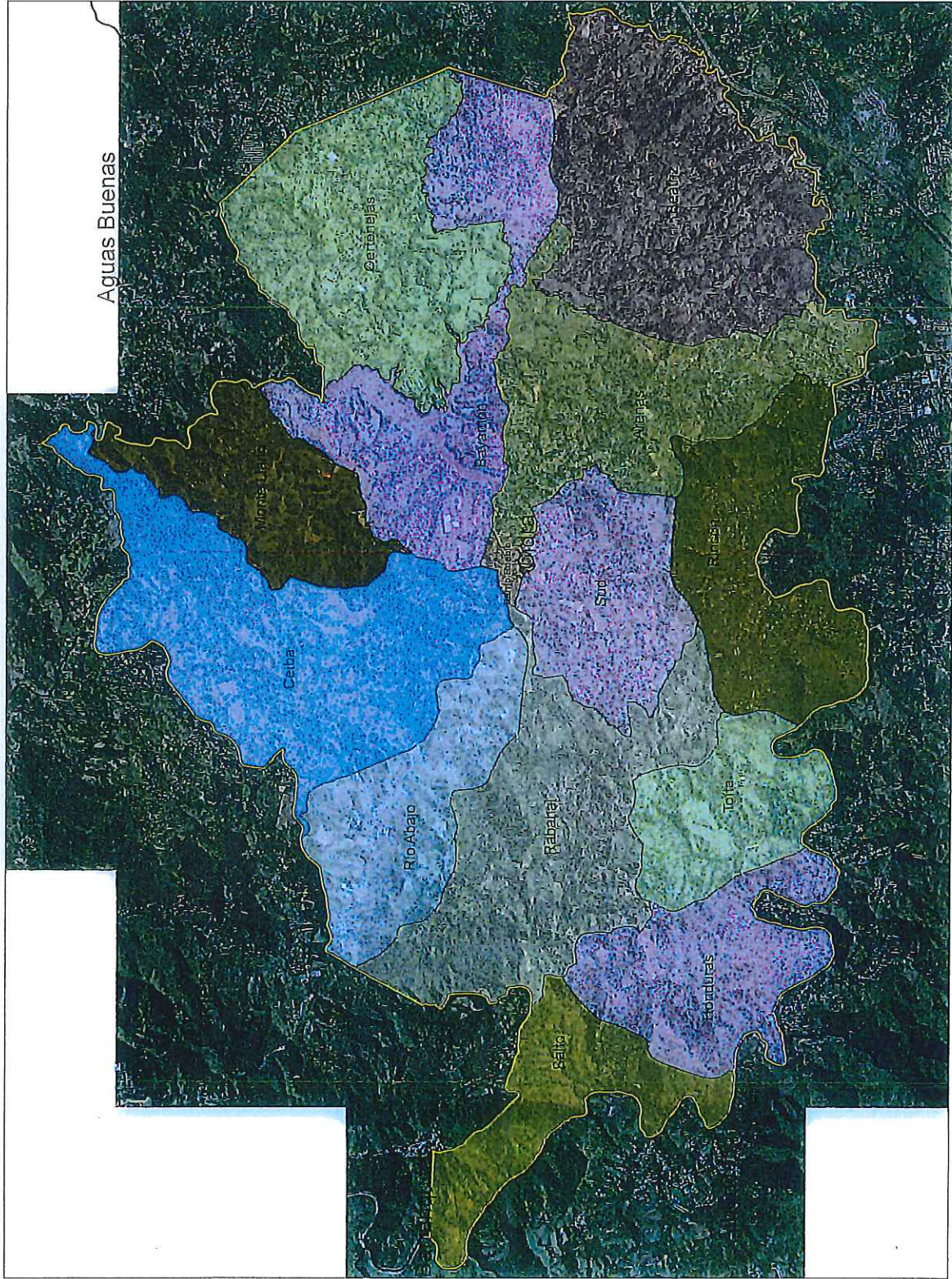
Title: Mayor

Date: April 4, 2018

## APPENDIX



# CIDRA WARDS & BORDERING CITIES



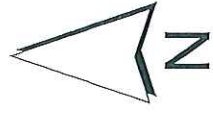
**LEGEND:**

- CIDRA
- BO\_ARENAS
- BO\_PUEBLO
- BO\_BAYAMON
- BO\_BEATRIZ
- BO\_CEIBA
- BO\_CERTENEJAS
- BO\_HONDURAS
- BO\_MONTE\_LLANO
- BO\_RABANAL
- BO\_RINCON
- BO\_RIO\_ABAJO
- BO\_SALTO
- BO\_SUD
- BO\_TOITA

**PUERTO RICO**

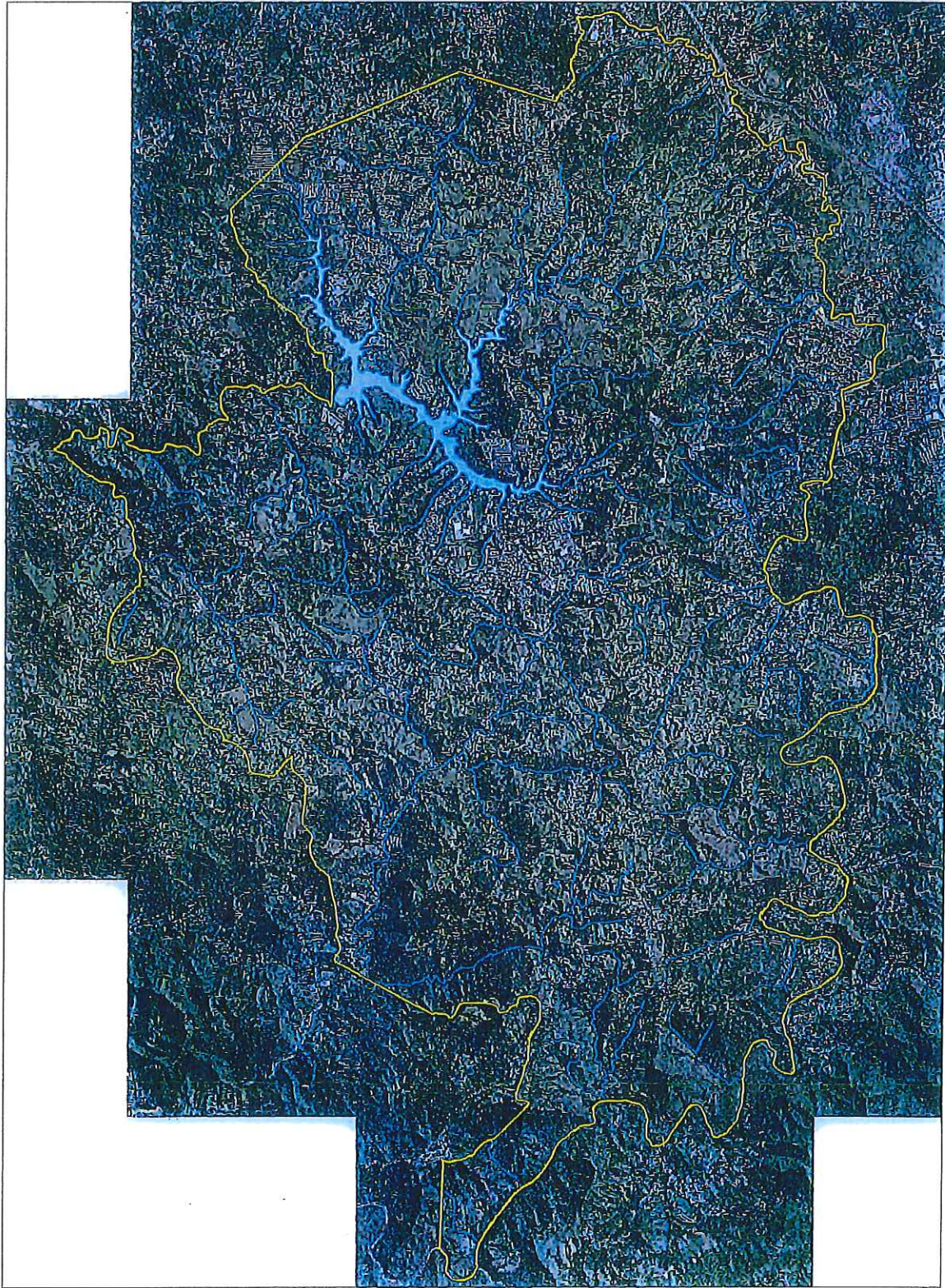


SCALE: 1:23,000





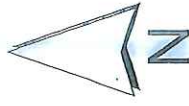
# CIDRA HYDROGRAPHY



## LEGEND:

-  CIDRA
-  HIDROGRAFÍA
-  LAGO DE CIDRA

PUERTO RICO

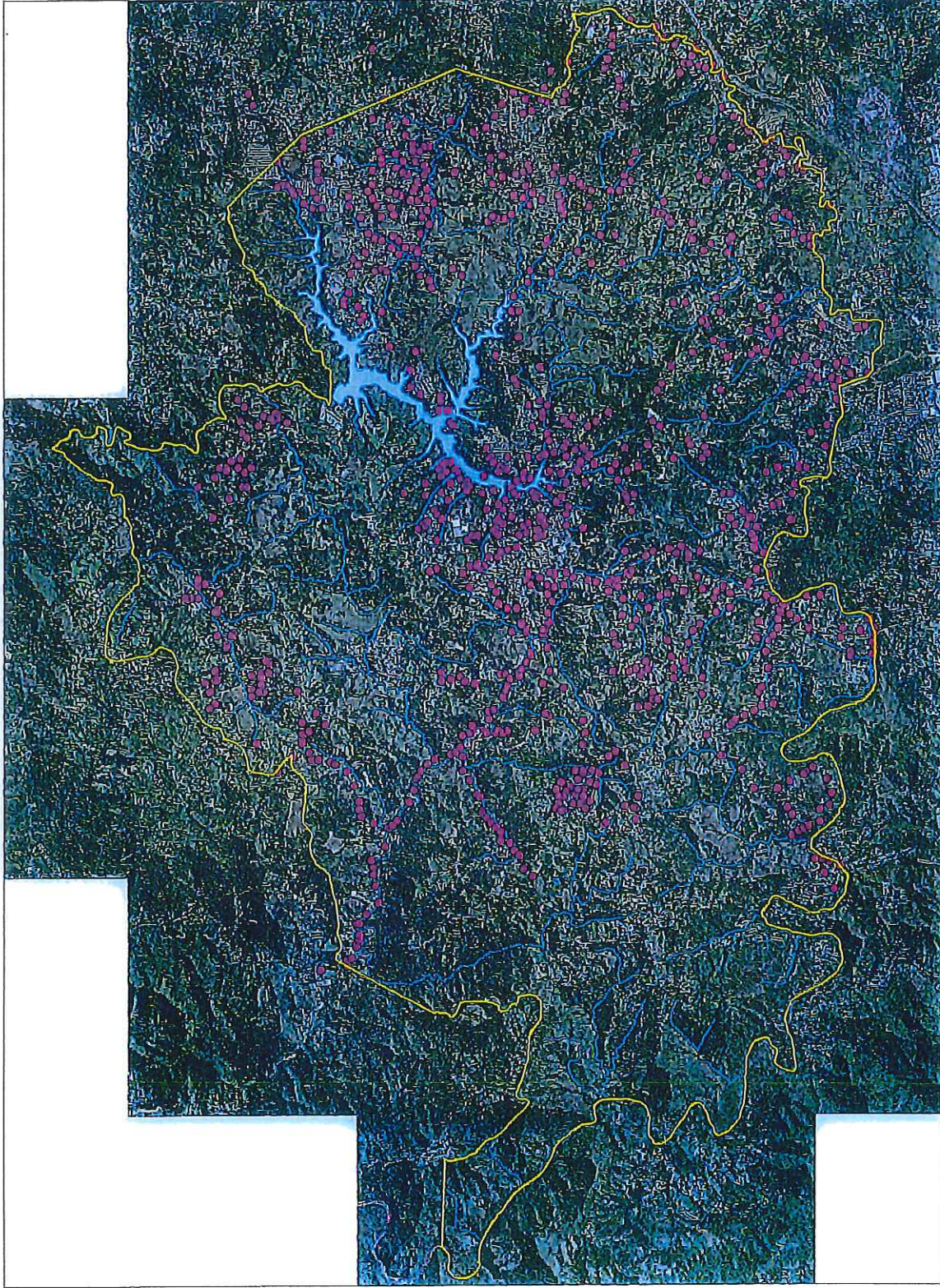


SCALE: 1:23,000



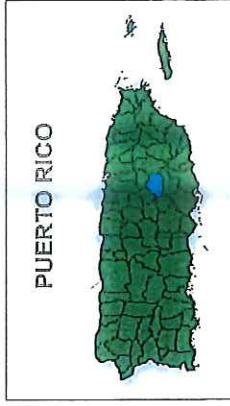


# CIDRA OUTFALL MAP & HYDROGRAPHY



**LEGEND:**

- CIDRA
- MS4\_WEB\_OUTFALLS
- HIDROGRAFÍA
- LAGO DE CIDRA



SCALE: 1:23,000





# CIDRA URBAN & RURAL AREAS

