

Former Hoover Company Facility Investigation & Cleanup

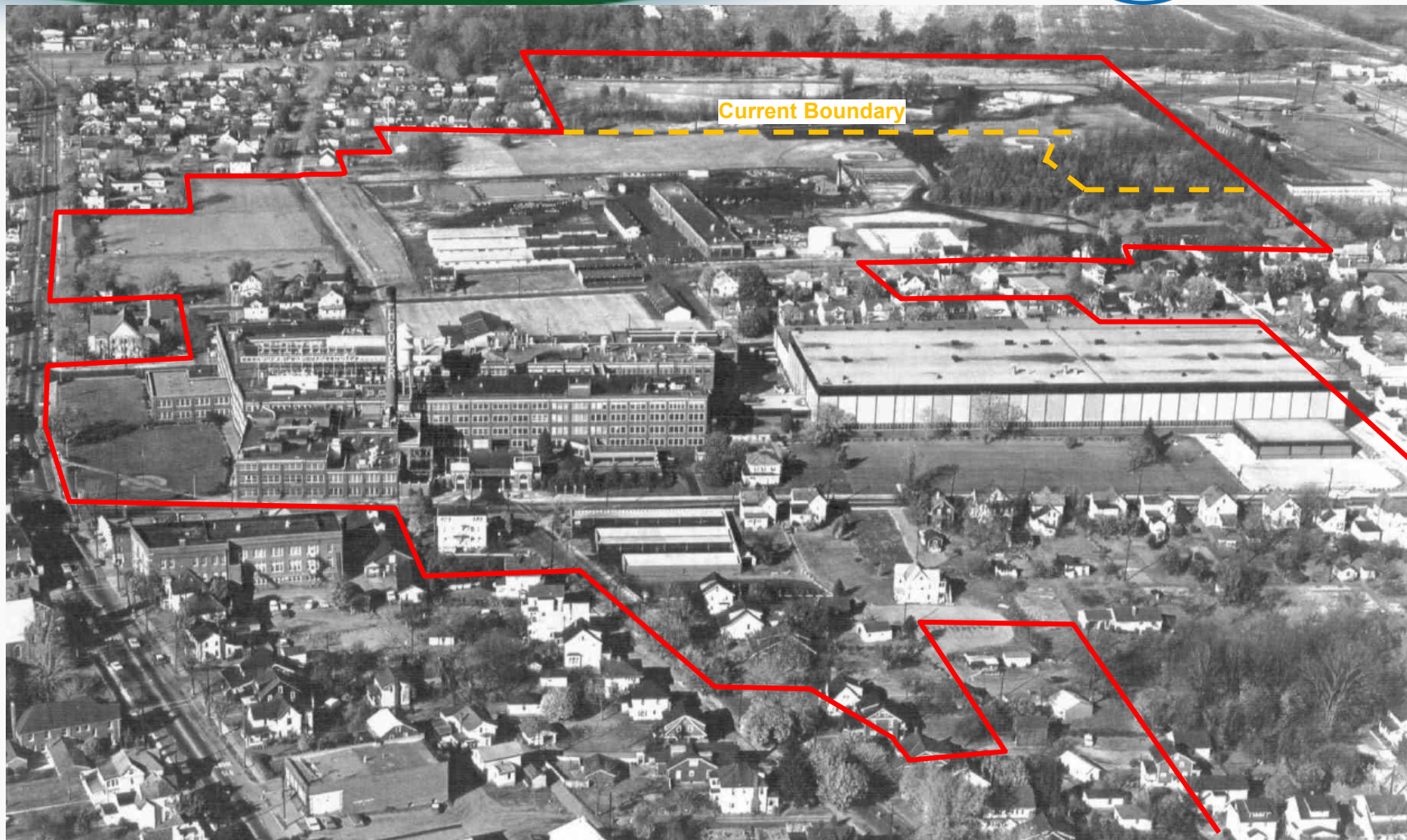
Status and Progress

Joseph Kelly, Project Manager

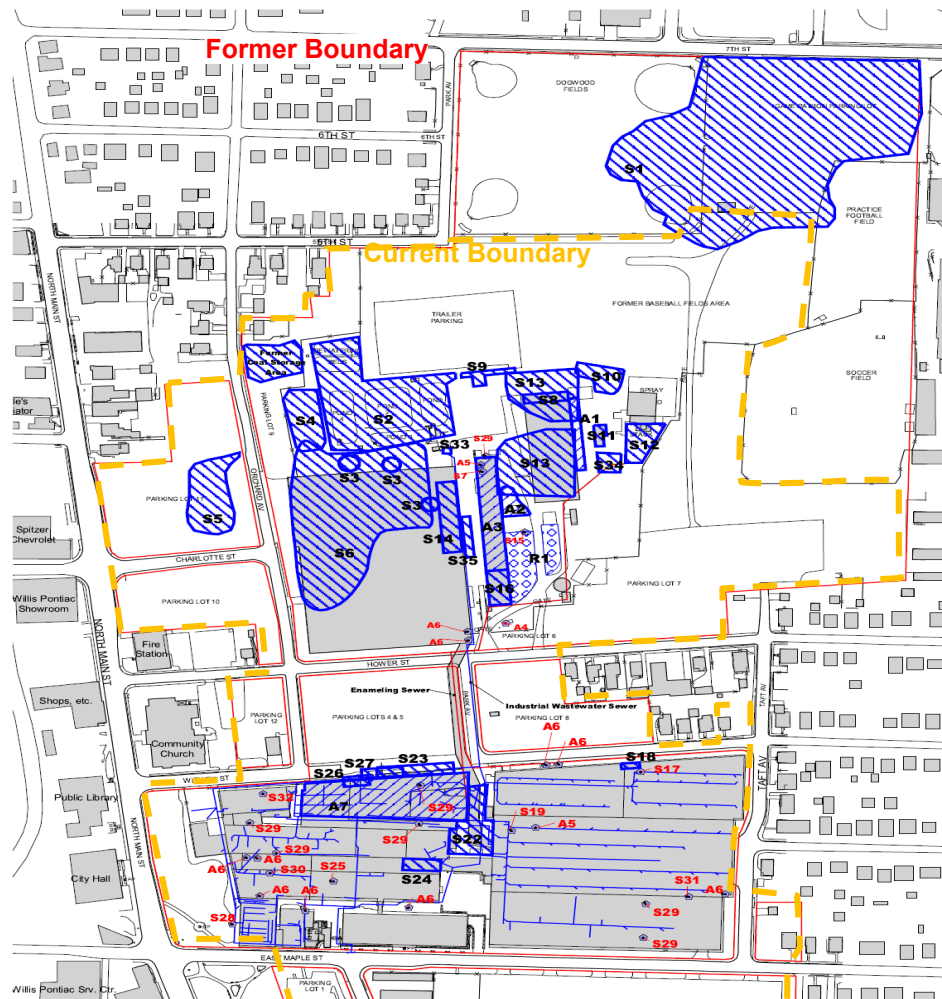
kelly.joseph@epa.gov, 312-353-2111

Rafael Gonzalez, Community Involvement

gonzalez.rafael@epa.gov, 312-886-0269



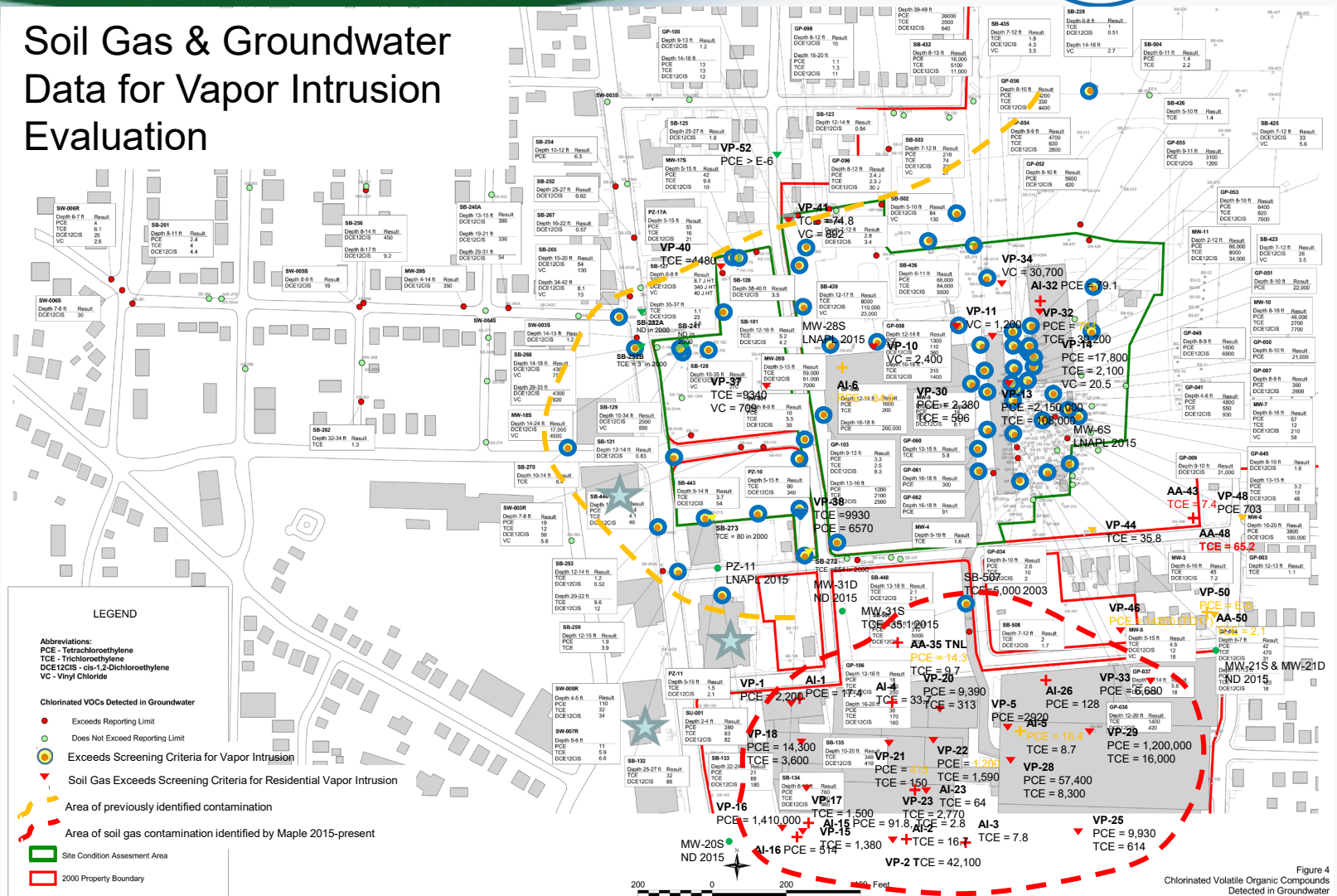
1964 view of the former Hoover Plant looking north (Hoover Historical Center)



Solid Waste Management Units at former Hoover Plant (2003 FCMP)



Soil Gas & Groundwater Data for Vapor Intrusion Evaluation



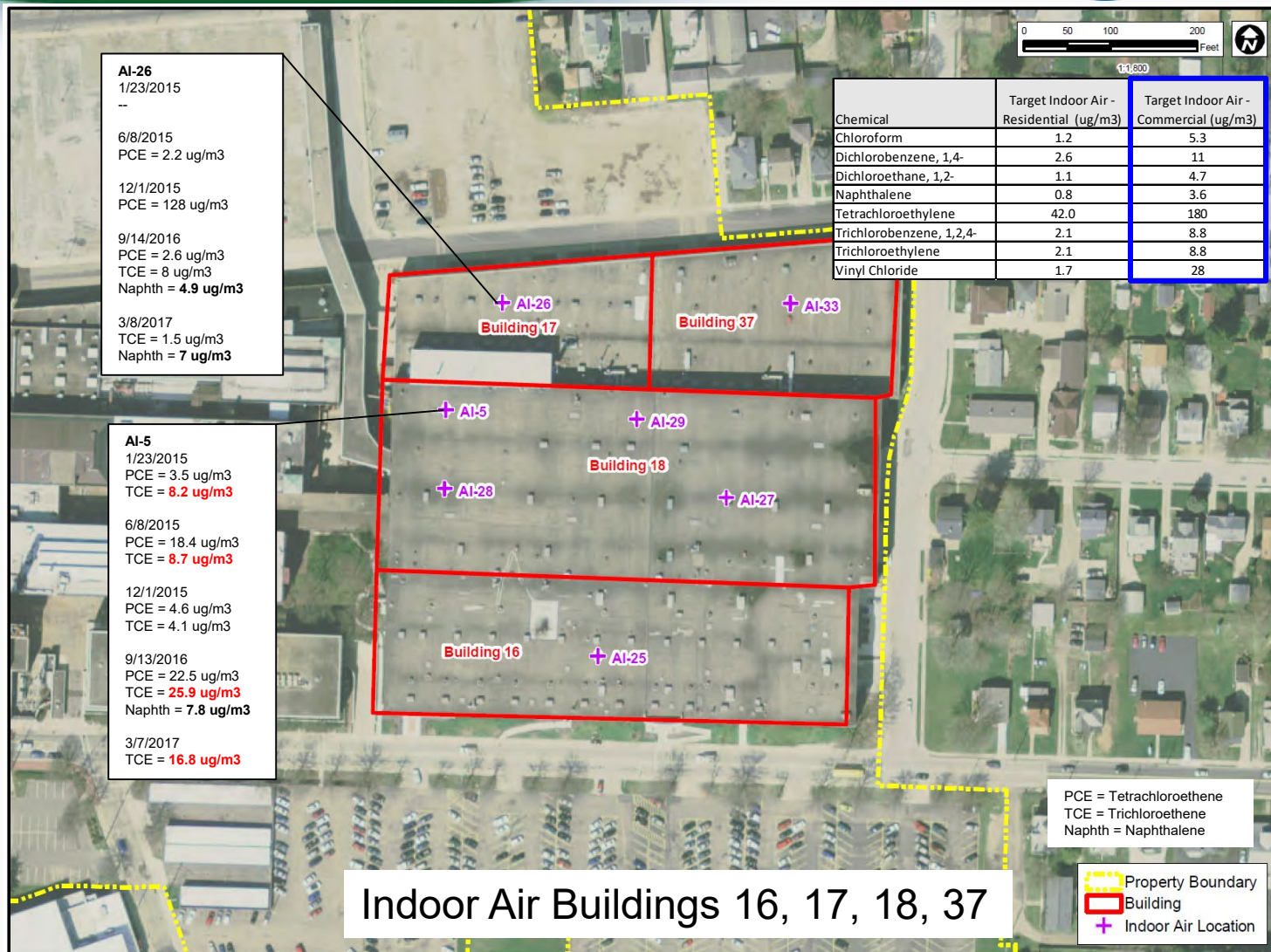
NOTE: Basemaps derived from aerial orthographic photos taken January 17, 2000.
 VANTIGONE\Fp\hooover\gishw_oms_ga_apr\NYCMG_CVOC_Detections in GW (Sout - Fig.3).PDF 12 June 2001 09:32 CGREEDWAY

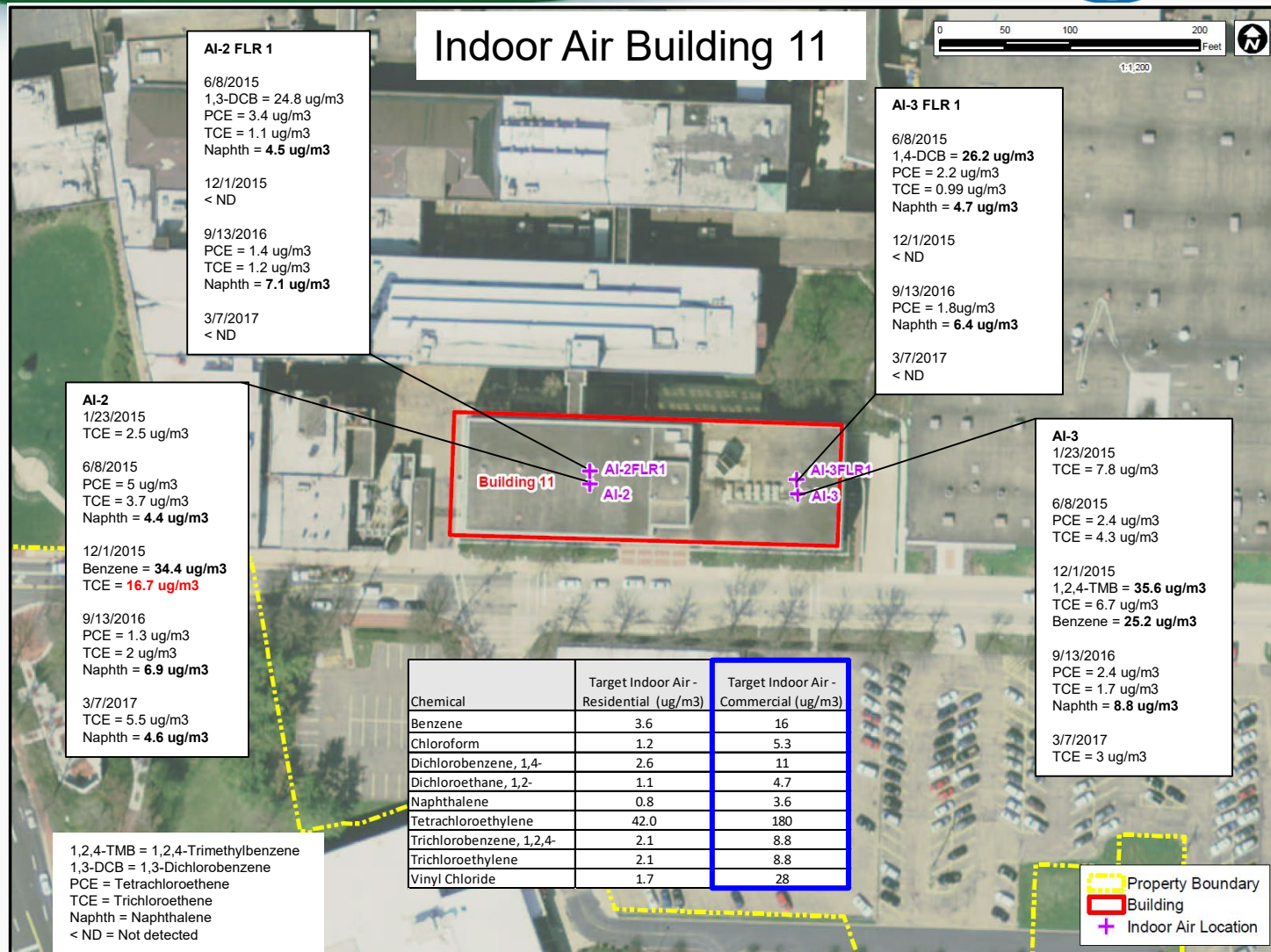
Figure 4
 Chlorinated Volatile Organic Compounds
 Detected in Groundwater
 The Hoover Company, North Canton, Ohio

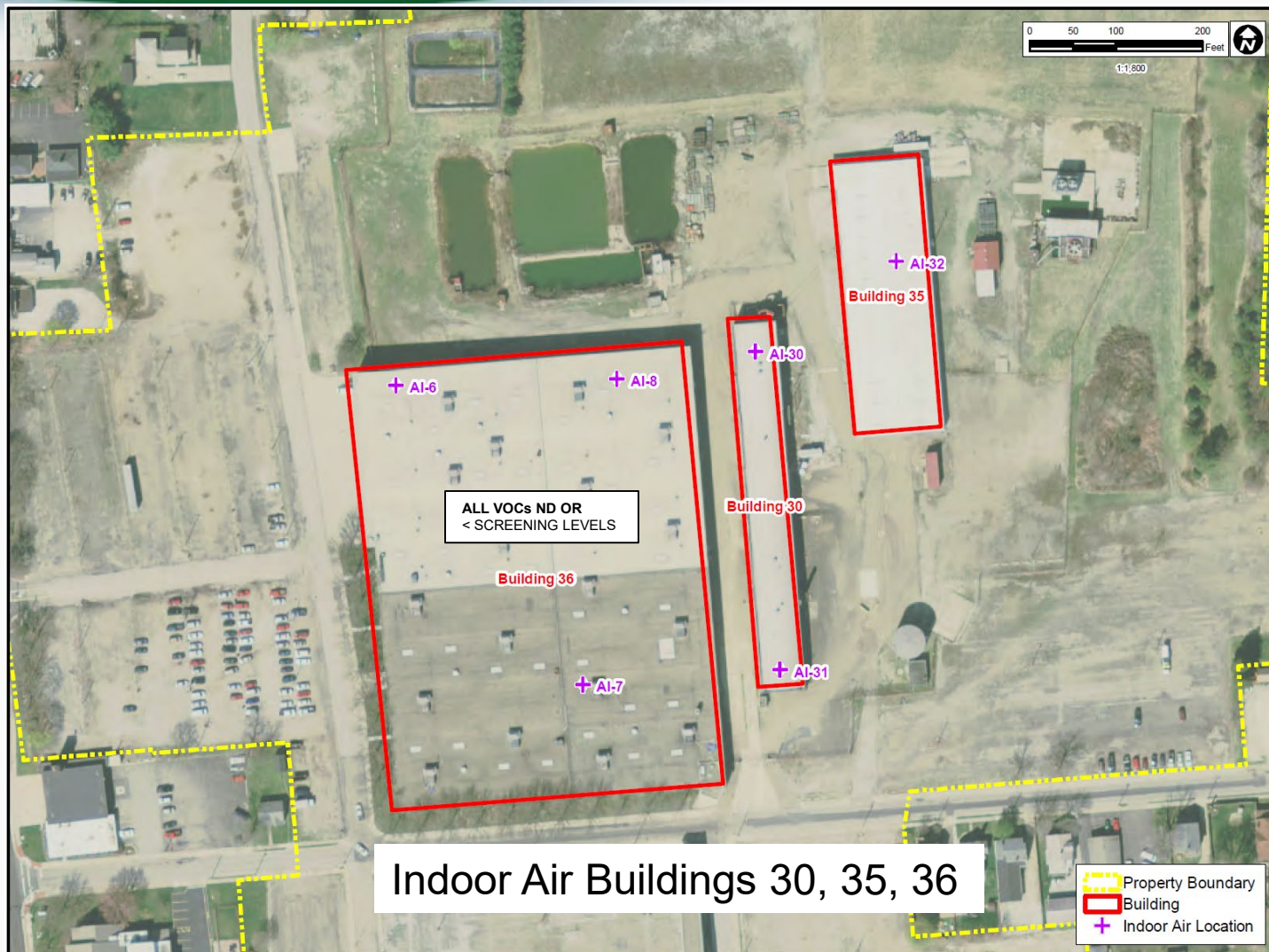
10/24/2018

U.S. Environmental Protection Agency

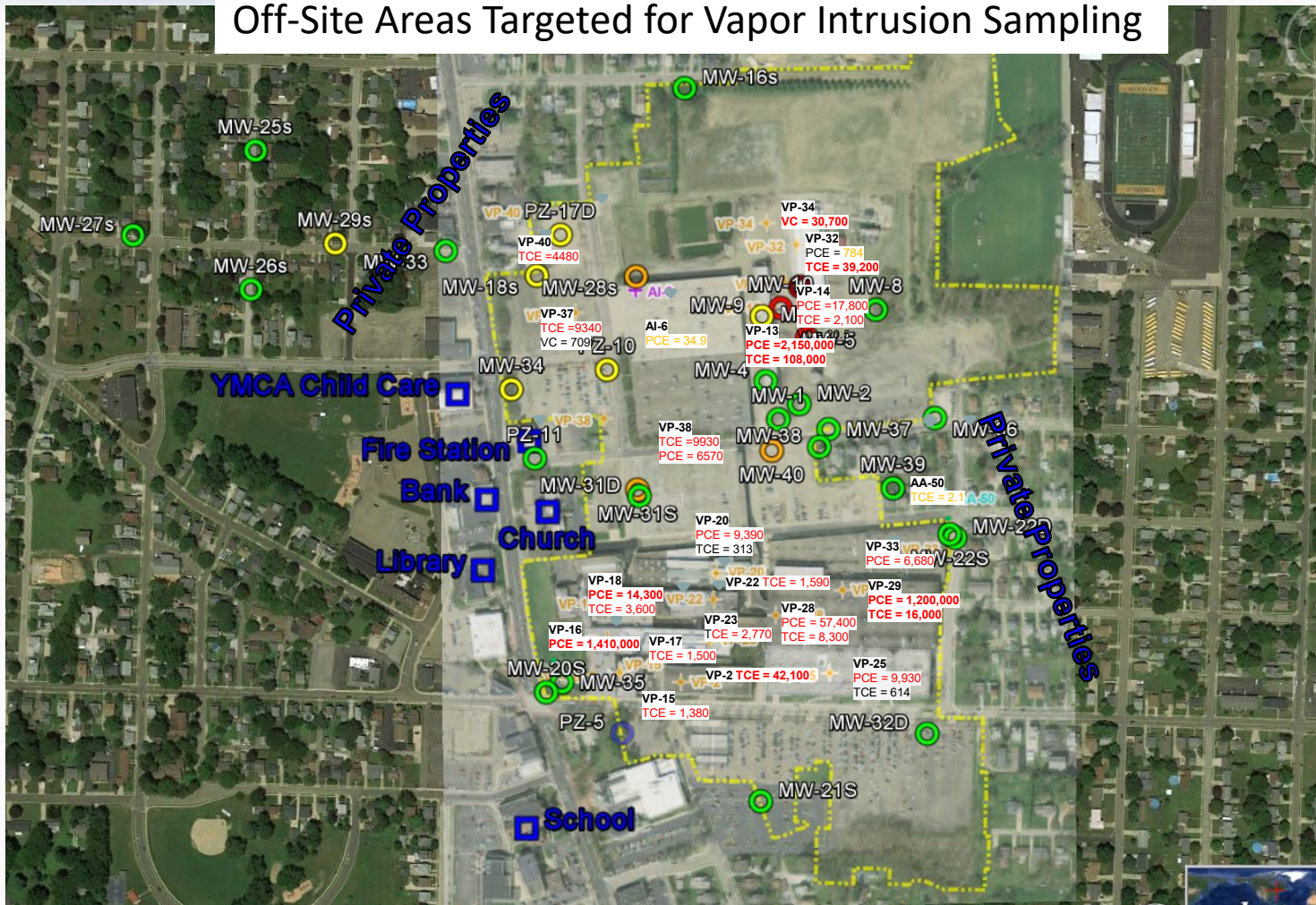
CH2MHILL







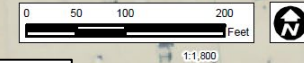
Off-Site Areas Targeted for Vapor Intrusion Sampling





Off-Site Vapor Intrusion

Chemical	Target Indoor Air - Residential (ug/m3)	Target Indoor Air - Commercial (ug/m3)
Chloroform	1.2	5.3
Dichlorobenzene, 1,4-	2.6	11
Dichloroethane, 1,2-	1.1	4.7
Naphthalene	0.8	3.6
Tetrachloroethylene	42.0	180
Trichlorobenzene, 1,2,4-	2.1	8.8
Trichloroethylene	2.1	8.8
Vinyl Chloride	1.7	28



AI-58
4/1/2016
Chloroform = 3.3 ug/m3
PCE = 3.6 ug/m3

9/14/2016
PCE = 2.7 ug/m3
TCE = 1.2 ug/m3
Naphth = **9.4 ug/m3**

3/8/2017
Chloroform = 1.1 ug/m3
Naphth = **5.4 ug/m3**

AI-58 FLR1
5/26/2016
PCE = 2.2 ug/m3

9/14/2016
PCE = 1.8 ug/m3
Naphth = **6.9 ug/m3**

3/8/2017
Naphth = **4.9 ug/m3**

AI-71
9/15/2016
Naphth = **6.1 ug/m3**

3/9/2017
PCE = 1.4 ug/m3
Naphth = **5.2 ug/m3**

5/19/2017
--

AI-60
3/31/2016
PCE = 1.8 ug/m3

9/14/2016
PCE = 2.9 ug/m3
Naphth = **11.5 ug/m3**

3/8/2017
Naphth = **4.7 ug/m3**

AI-58FLR1
AI-58

FIRE STATION
AI-70

BANK
AI-71

CHURCH
AI-59
AI-68
AI-69

AI-69
5/26/2016
Naphth = **6 ug/m3**

9/16/2016
PCE = 4.7 ug/m3
TCE = 4.7 ug/m3
Naphth = **5.6 ug/m3**

11/11/2016
PCE = 2.1 ug/m3
Naphth = **4.8 ug/m3**

3/7/2017
Naphth = **4.6 ug/m3**

AI-70
5/26/2016
PCE = 2.4 ug/m3
TCE = 1.3 ug/m3

9/15/2016
PCE = 2 ug/m3
TCE = 0.92 ug/m3
Naphth = **5 ug/m3**

3/9/2017
PCE = 3.4 ug/m3
TCE = 1.5 ug/m3

AI-59
4/1/2016
PCE = 41.1 ug/m3
TCE = 10.6 ug/m3

5/26/2016
PCE = 1.7 ug/m3

9/16/2016
PCE = 3.5 ug/m3
TCE = 1.3 ug/m3
Naphth = **5.4 ug/m3**

3/7/2017
PCE = 1.9 ug/m3

AI-68
5/26/2016
PCE = 6.1 ug/m3
TCE = 1.6 ug/m3
Naphth = **4.8 ug/m3**

9/16/2016
PCE = 36.1 ug/m3
TCE = 45.1 ug/m3
Naphth = **8.1 ug/m3**

11/11/2016
PCE = 35 ug/m3
TCE = 11.8 ug/m3

3/7/2017
PCE = 2.7 ug/m3
TCE = **3 ug/m3**

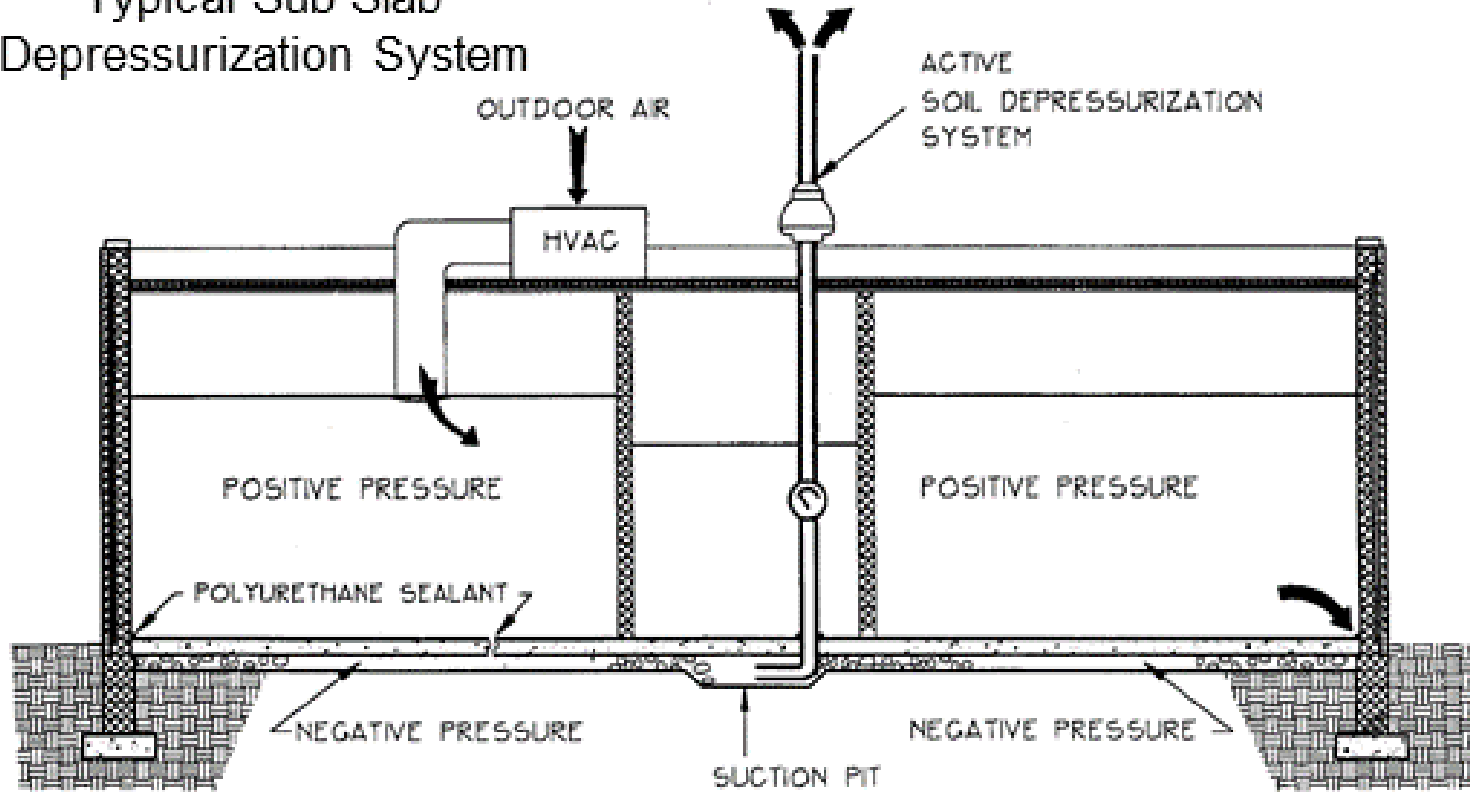
5/19/2017
PCE = 1.5 ug/m3
TCE = **2.3 ug/m3**

10/31/2017
PCE = <2.1 ug/m3
TCE = <0.85 ug/m3

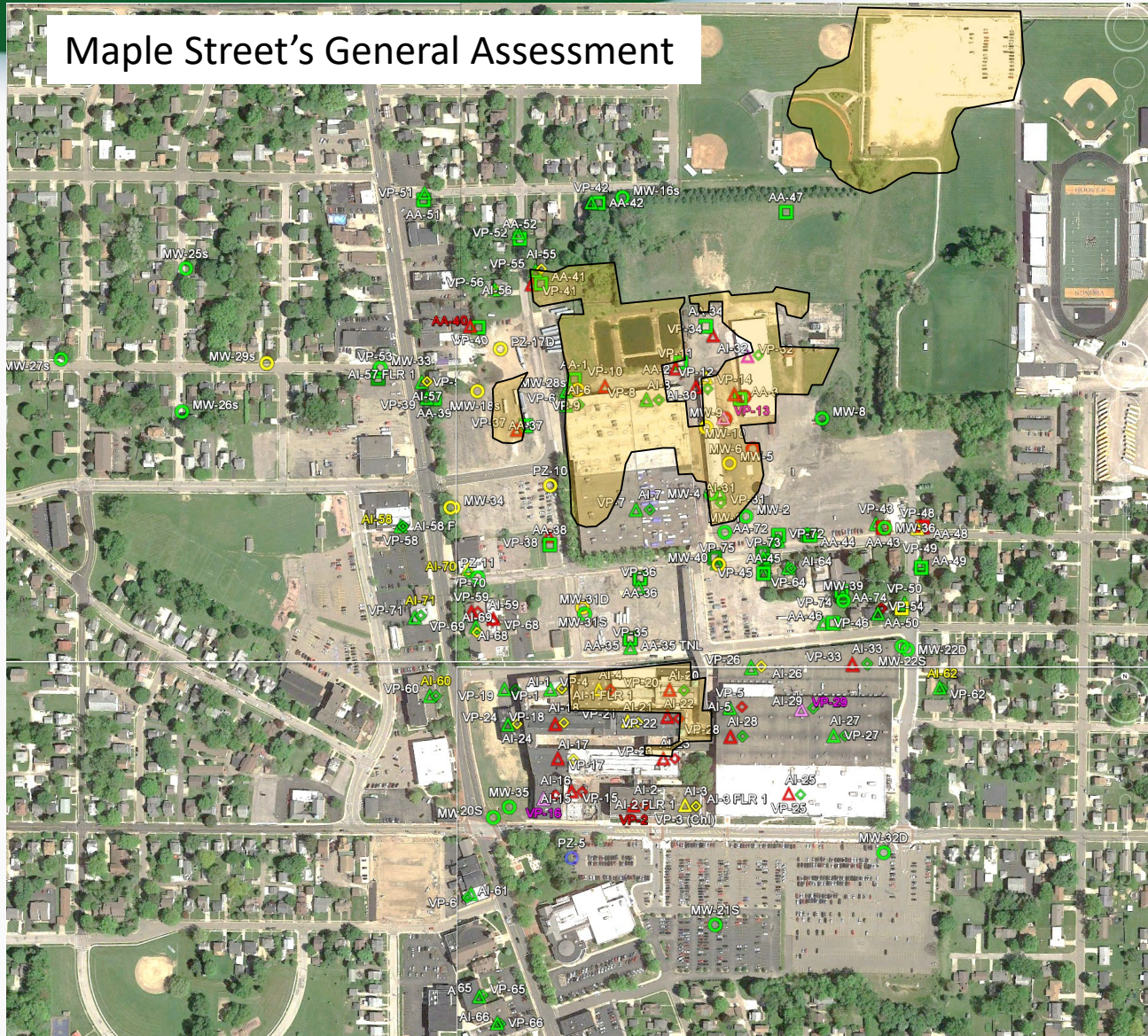
PCE = Tetrachloroethene
TCE = Trichloroethene
Naphth = Naphthalene

Property Boundary
 Indoor Air Location

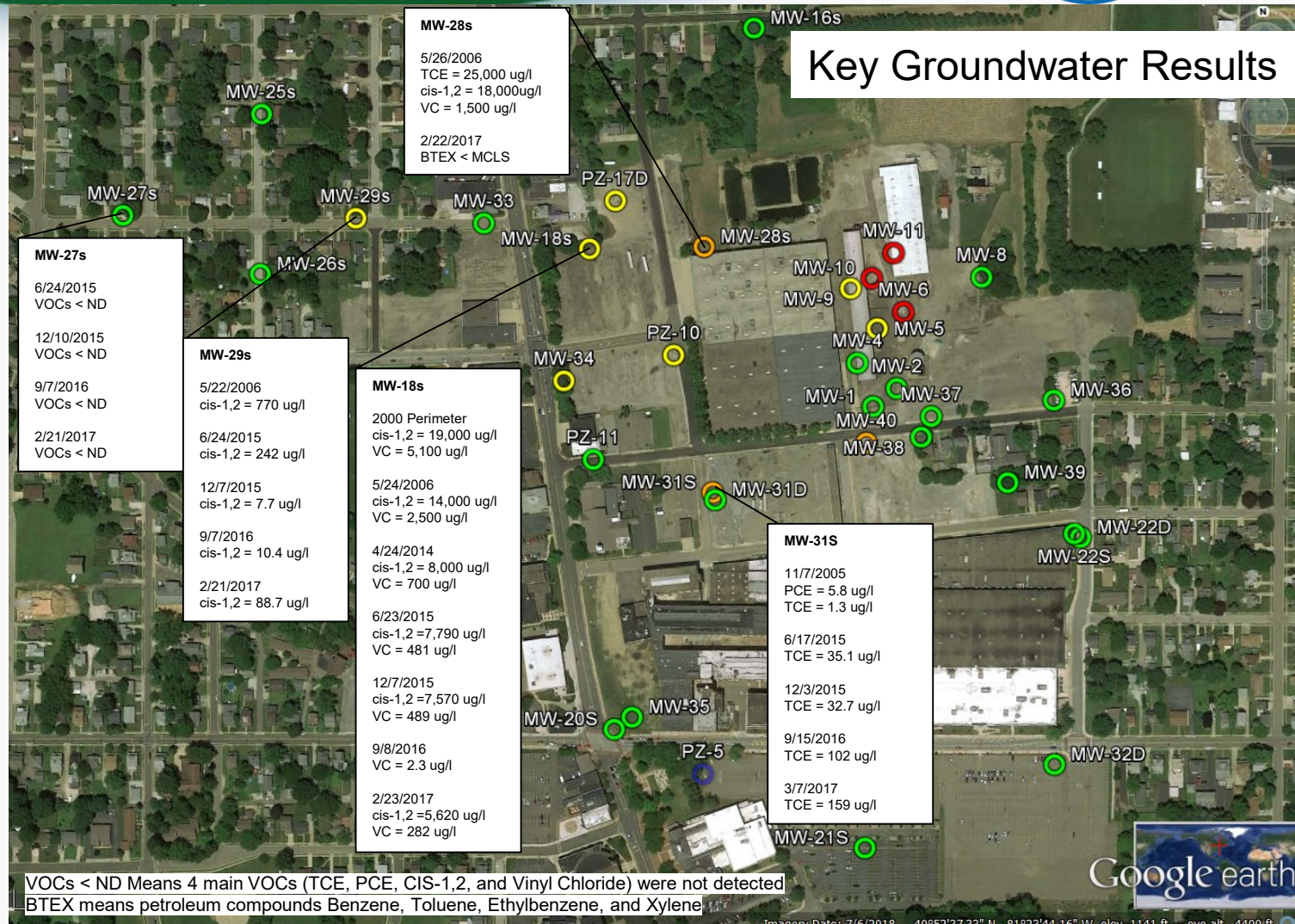
Typical Sub Slab Depressurization System



Maple Street's General Assessment

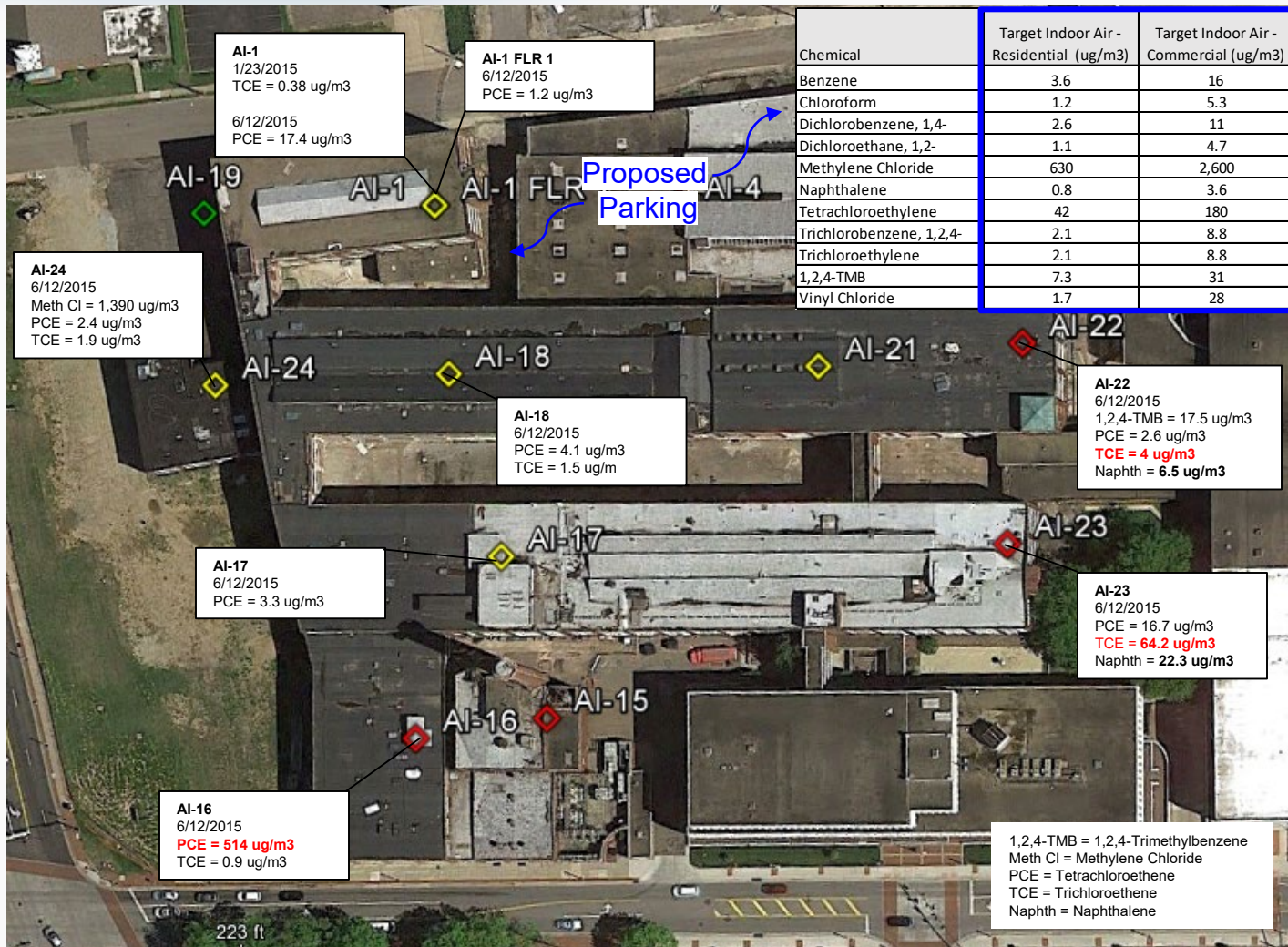


10/24/2018



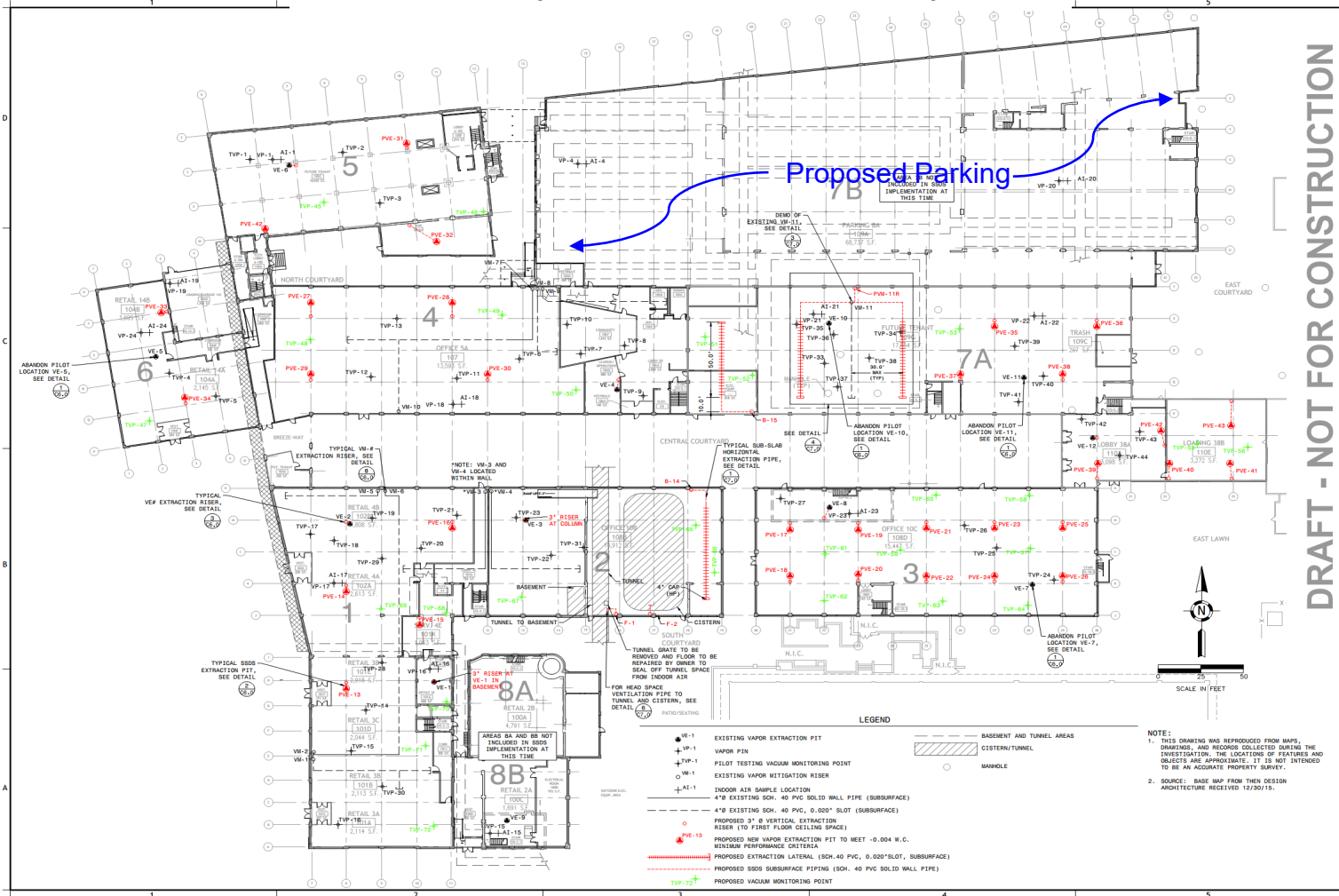


West Factory Indoor Air



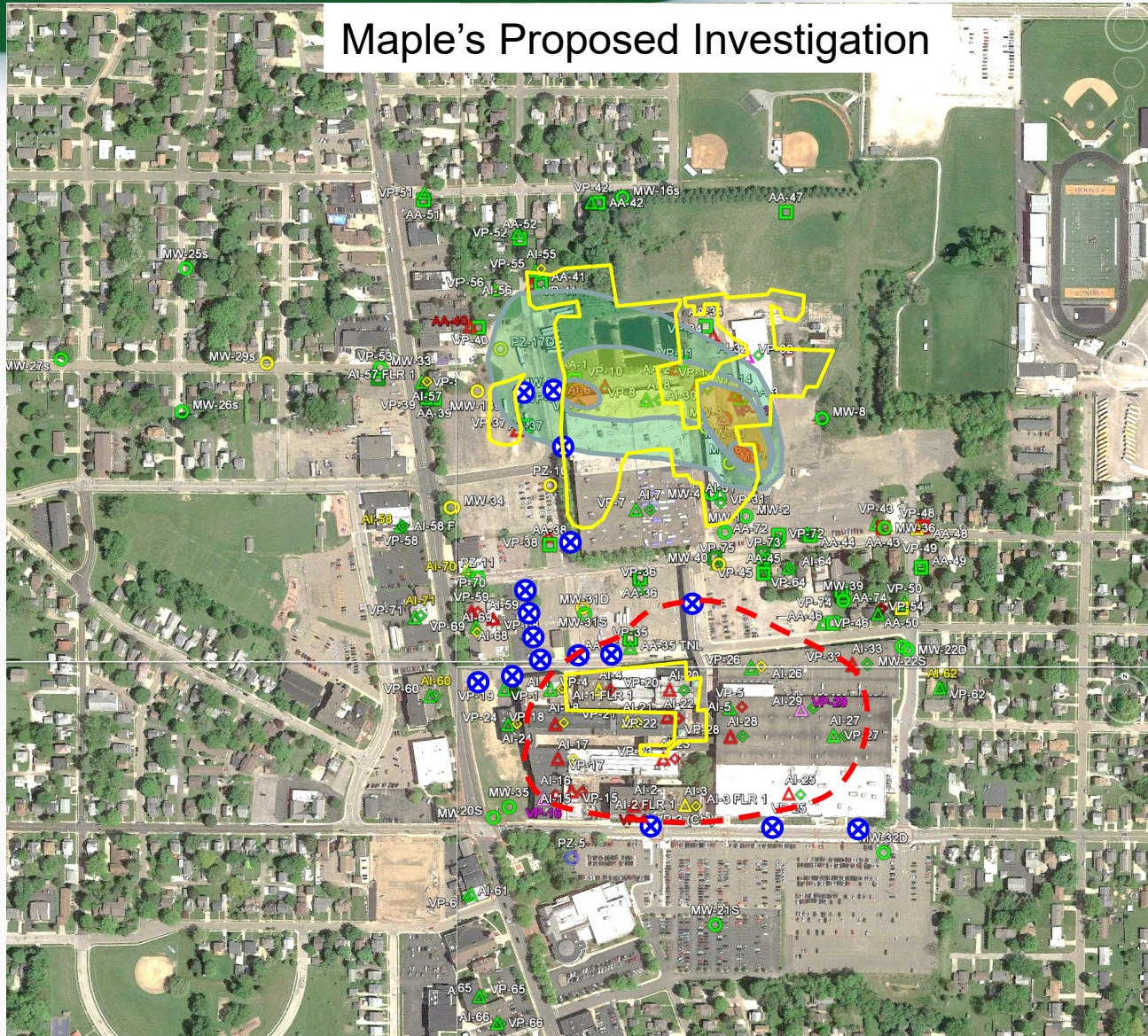


West Factory Depressurization System



DRAFT - NOT FOR CONSTRUCTION

Maple's Proposed Investigation



10/24/2018



Restrictions for Managing Contamination In-Place

No Restrictions = Area can be used for any purposes; no restrictions on used based on contamination.

GW Use = Groundwater Use Restriction; County Groundwater Resolution prevents the use of groundwater or installation of water wells for potable use to prevent ingestion of potentially contaminated groundwater.

Non-Res. Use = Non-Residential Land Use Restriction; Area cannot be used for residential purposes due to elevated levels of contamination.

Non-Ag. Use = Non-Agricultural Land Use Restriction; Area cannot be used for growing food sources because of the types of contamination present.

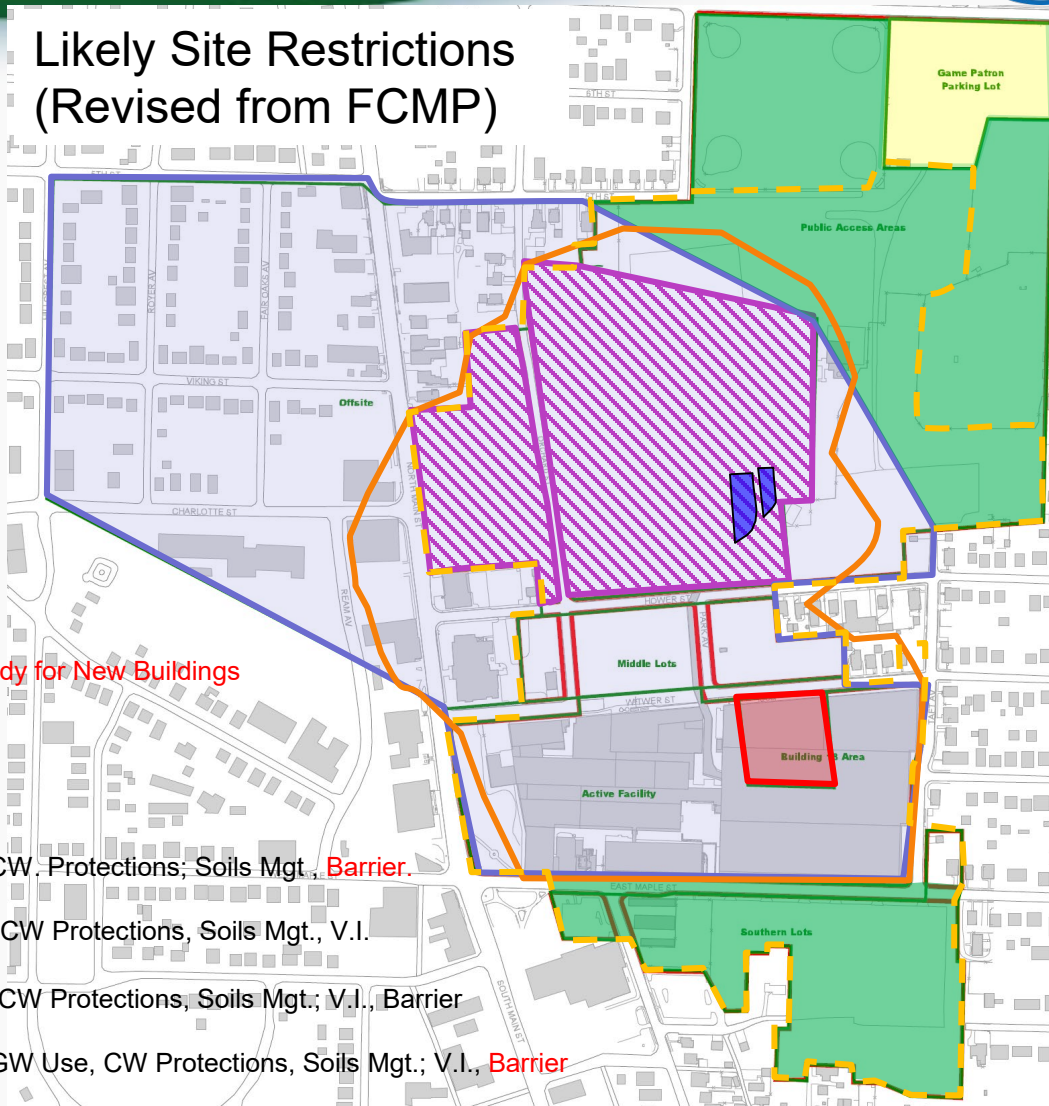
CW Protections = Construction Worker Protections; Requirement to ensure the health and safety of construction workers during excavation activities due to potential to encounter contamination.








Soils Mgt. = Soils Management; Requirement to manage any soils that are excavated in the future and that may be contaminated to be handled in compliance with local, state, and federal regulations.

V.I. Restriction = Vapor Intrusion Restriction; Requirement to perform a vapor intrusion assessment on existing buildings or install protective controls on new buildings if development occurs in the future.

Barrier = Engineered Barrier; Requirement to install new or and maintain impermeable surface to prevent contact with contamination below, reduce vapor intrusion potential, and/or prevent infiltration of rainwater.

Likely Site Restrictions (Revised from FCMP)



-  V.I. Assessment or Remedy for New Buildings
-  No Restrictions, Soil Mgt.
-  GW Use
-  Non-Res./Non-Ag. Use; CW Protections; Soils Mgt.; Barrier.
-  Non-Res. Use, GW Use, CW Protections, Soils Mgt., V.I.
-  Non-Res. Use, GW Use, CW Protections, Soils Mgt.; V.I., Barrier
-  Non-Res./Non-Ag. Use, GW Use, CW Protections, Soils Mgt.; V.I., Barrier

Questions?

Joseph Kelly, Project Manager

kelly.joseph@epa.gov, 312-353-2111

Rafael Gonzalez, Community Involvement

gonzalez.rafael@epa.gov, 312-886-0269

*Francisco Arcuate, Public Relations

arcaute.francisco@epa.gov, 312-886-7613

* Contact for news inquiries