

Improving Stormwater Program Monitoring, Evaluation, Tracking, and Reporting

Workshop Report and Recommendations

Report Date: October 12, 2018

Prepared for:

U.S. Environmental Protection Agency
Region 9

75 Hawthorne Street
San Francisco, CA 94105

Prepared by:

PG Environmental

14555 Avion Parkway, Suite 125
Chantilly, VA 20151

EPA Contract No. EP-C-16-003

ACKNOWLEDGEMENTS

EPA Region 9 appreciates its partnership with the State of California and thanks the State for hosting and co-sponsoring the workshop. This workshop was intended to advance efforts by EPA and the States to improve permitting, promote water technology innovation, and help enhance the effectiveness and long-term viability of urban water management programs. It would not have been possible without the financial support of EPA Headquarters' Office of Science and Technology and Office of Wastewater Management. EPA also acknowledges PG Environmental's outstanding work in supporting the workshop and developing this report.

Special thanks must also be extended to the workshop participants from across the country who energetically and thoughtfully engaged in the workshop and in the preparation of this report.

DISCLAIMER

The material presented in this document is intended solely for informational purposes and is not intended to interpret federal statutory or regulatory requirements or to convey EPA guidance or policy. The recommendations and possible actions described in this document do not represent binding commitments by EPA or other parties. This document is not intended, nor can it be relied on, to create any rights enforceable by any party in litigation with the United States. This document may be revised or updated without public notice.

Mention of trade names or commercial products in this document does not constitute an endorsement or recommendation for use.

EXECUTIVE SUMMARY

Without proper treatment, urban stormwater runoff can convey pollutants into local waterbodies, threatening human health, public water supplies, and aquatic habitats, and possibly deterring economic activities. The U.S. Environmental Protection Agency (EPA) established the Municipal Separate Storm Sewer System (MS4) program in the early 1990s under its National Pollutant Discharge Elimination System (NPDES) to address pollution from urban stormwater runoff. Now almost 30 years later, regulators and permittees have a greater understanding of urban water quality management, have compiled illustrative examples of program successes and failures, and are using new technologies for data management, modeling, and water quality monitoring.

While the MS4 program has evolved over the decades in response to new information and tools, significant opportunities for improvement remain, especially around stormwater program monitoring and assessment. A more strategic approach to monitoring and assessment, including the use of newer technologies, could enable decision-makers to shift resources from less productive approaches to the most useful, cost-effective ones.



Photo: Stock Image

In March 2018, EPA Region 9, with assistance from EPA Headquarters and in partnership with the State of California, invited 31 stormwater experts from across the country to Oakland, California, for a two-day workshop titled *Improving Stormwater Permit Approaches to Monitoring, Tracking, Evaluation, and Reporting*. Participants included representatives from EPA, state Clean Water Act permitting agencies, local stormwater programs, national associations, consulting firms, and nonprofit organizations. The workshop was designed to explore current requirements and practices for municipal stormwater program monitoring, evaluation, tracking, and reporting and identify opportunities for improvement that would support more effective program implementation.

This report aims to provide a synthesis of participant ideas and contributions, along with other existing research, to identify the most promising opportunities for strengthening MS4 permits and program implementation. It includes an overview of the workshop discussions, specific recommended actions, case studies, summaries of known efforts related to the recommendations, and, where possible, some indication of commitment by stakeholder groups or organizations (e.g., trade associations, permittees, states, universities) to make progress in a given area. The table on the following page presents a brief synopsis of the recommendations.

EPA, the State of California, and participating organizations plan to build on workshop conversations through broad outreach to partners and stakeholders and continued dialogues surrounding these important issues. This iterative, inclusive approach allows for (1) more thorough evaluation of stormwater program monitoring, evaluation, tracking, and reporting provisions; (2) assessment of opportunities to adjust programs to better meet clean water goals; and (3) identification of specific actions necessary to enable innovative and effective approaches across the nation.

SUMMARY OF WORKSHOP RECOMMENDATIONS
<p>General Capacity Building and Program Support</p>
<ul style="list-style-type: none"> • Develop a vision for the future of stormwater monitoring to improve MS4 program efficiency and effectiveness. Identify common attributes of an effective approach to stormwater monitoring that support other local evaluation, tracking, and reporting efforts. (Section 3.1.1) • Develop a guide to monitoring and evaluation to better serve MS4 programs. Document examples of successful monitoring approaches to enhance efficiency in local program design and implementation. (Section 3.1.2) • Establish key performance metrics (activity- and outcome-based) for MS4 programs. Provide guidance and examples on approaches for measuring and communicating how program activities impact water quality outcomes. (Section 3.1.3) • Identify ways to leverage existing data sets to improve MS4 program management decisions. Transform existing stormwater data into actionable information through better data analytics tools and broader scale evaluation of annual reports. (Section 3.1.4)
<p>Improving Permitting Strategies</p>
<ul style="list-style-type: none"> • Improve clarity of monitoring and effectiveness permit requirements (including objectives, methods, and designs). Compile examples of permit designs for monitoring requirements to illustrate the range of approaches and encourage the adoption of best practices. (Section 3.2.1) • Create a pathway in permits to make special studies or targeted monitoring more impactful. Design special studies and other stormwater methods assessments so that the results inform the local program while also benefiting the larger community of MS4s. (Section 3.2.2) • Evaluate whether lack of 40 CFR Part 136 approval presents a barrier to implementing new technologies for water quality sampling and analysis. Assess barriers and issues with using new water quality monitoring technologies that lack approved sampling and analysis methods. (Section 3.2.3)
<p>Making Outfall and Receiving Water Monitoring More Discriminating to Inform Program Management</p>
<ul style="list-style-type: none"> • Evaluate appropriate scale for monitoring efforts to yield actionable results. Identify options for structuring monitoring to account for different geographical and temporal scales of concern to answer key management questions while also seeking to maximize the opportunity for comparability, information sharing, and technology transfer. (Section 3.3.1) • Convene a visioning session for deploying sensors in MS4 programs. Give municipal stormwater programs improved platforms for sharing information about new sensor technologies and best practices for water quality monitoring. (Section 3.3.2)
<p>Improving Our Ability to Quantify Effectiveness—Approaches to Link Water Quality Outcomes to Actions</p>
<ul style="list-style-type: none"> • Document the current state of knowledge of BMP performance and effectiveness. Increase MS4 program capacity by generating and disseminating data to help quantify the effectiveness of stormwater best management practices in addressing various pollutants in different settings. (Section 3.4.1) • Improve the applicability and usefulness of modeling through collecting and incorporating better performance data. Strengthen long-term stormwater planning and project siting decisions by improving water quality and siting models to better address all factors contributing to pollutant reduction. (Section 3.4.2) • Evaluate methods to account for true source controls in models. Develop guidance to assist in development and implementation of modeling approaches to account for true source control methods for key stormwater pollutants of concern. (Section 3.4.3)
<p>Improving Program Tracking and Reporting</p>
<ul style="list-style-type: none"> • Identify an approach for using established performance metrics to guide tracking and reporting efforts. Adopt a dynamic and integrated tracking, evaluation, and reporting system that synthesizes data geographically and supports real-time management decision-making. (Section 3.5.1) • Determine the most effective MS4 program reporting mechanisms and formats. Implement a web-based reporting template informed by stakeholder input to streamline regulatory requirements and promote knowledge transfer across different states and local MS4 programs. (Section 3.5.2)

TABLE OF CONTENTS

Introduction	1
1 MS4 Workshop	2
1.1 Workshop Format.....	3
1.2 Pre-Workshop Questionnaire	3
1.3 Defining “Effectiveness”.....	5
2 Overview of Current (and Past) Monitoring and Assessment Approaches and Efforts.....	7
2.1 Variation in Approaches	7
2.2 Examples of Approaches.....	8
2.3 Existing Assessment/Evaluation Efforts and Resources.....	12
2.4 Conceptual Effectiveness Assessment Framework.....	14
3 Recommended Program and Permit Improvements	16
3.1 General Capacity Building and Program Support	16
3.1.1 Develop a Vision for the Future of Stormwater Monitoring to Improve MS4 Program Efficiency and Effectiveness	16
3.1.2 Develop a Guide to Improving Monitoring and Evaluation to Better Serve MS4 Programs.....	17
3.1.3 Establish Key Performance Metrics (Activity- and Outcome-Based) for MS4 Programs.....	19
3.1.4 Identify Ways to Leverage Existing Data Sets to Improve MS4 Program Management Decisions.....	20
3.2 Improving Permitting Strategies	21
3.2.1 Improve Clarity of Monitoring and Effectiveness Permit Requirements (Including Objectives, Methods, and Designs)	21
3.2.2 Create a Pathway in Permits to Make Special Studies or Targeted Monitoring More Impactful.....	22
3.2.3 Evaluate Whether Lack of 40 CFR Part 136 Approval Presents a Barrier to Implementing New Technologies for Water Quality Sampling and Analysis	24
3.3 Making Outfall and Receiving Water Monitoring More Discriminating to Inform Program Management.....	24
3.3.1 Evaluate Appropriate Scale for Monitoring Efforts to Yield Actionable Results	26
3.3.2 Convene a Visioning Session for Deploying Sensors in MS4 Programs.....	27
3.4 Improving Our Ability to Quantify Effectiveness—Approaches to Link Water Quality Outcomes to Actions	28
3.4.1 Document the Current State of Knowledge of BMP Performance and Effectiveness	29

3.4.2	Improve the Applicability and Usefulness of Modeling Through Collecting and Incorporating Better Performance Data	31
3.4.3	Evaluate Methods to Account for True Source Controls in Models.....	32
3.5	Improving Program Tracking and Reporting.....	33
3.5.1	Identify an Approach for Using Established Performance Metrics to Guide Tracking and Reporting Efforts	33
3.5.2	Determine the Most Effective MS4 Program Reporting Mechanisms and Formats	34
4	Opportunities and Next Steps	36
	References.....	38
	Appendix A: Workshop Attendees.....	40
	Appendix B: Workshop Agenda	41
	Appendix C: Pre-Workshop Questionnaire Results	46

ABBREVIATIONS AND ACRONYMS

BMP	best management practice
CASQA	California Stormwater Quality Association
CFR	Code of Federal Regulations
EPA	U.S. Environmental Protection Agency
MCM	minimum control measure
MS4	Municipal Separate Storm Sewer System
NMSA	National Municipal Stormwater Alliance
NPDES	National Pollutant Discharge Elimination System
O&M	operations and maintenance
POC	pollutants of concern
RAA	reasonable assurance analysis
SMC	Southern California Stormwater Monitoring Coalition
SWMP	stormwater management program
TMDL	total maximum daily load
WEF	Water Environment Federation
WQS	water quality standards

A NOTE ON TERMINOLOGY USED AT THE WORKSHOP

Different terminology used by local programs and regulators across the country necessitated the use of a common set of terms during the workshop and in this report. These terms and definitions may not be applicable in all other contexts.

Workshop participants extensively discussed the pros and cons of two ways to assess MS4 programs and their components:

- Use of water quality or other response monitoring data.
- Evaluation of program activities and best management practices (BMPs).

Accordingly, this report distinguishes between water quality and other environmental “monitoring” and program activity and BMP “evaluation,” even though it is understood that these approaches may overlap in practice. The report also uses particular definitions of “activities” and “BMPs,” two terms that different participants used in different ways during the workshop itself. The report’s definitions are presented below.

- **Monitoring:** Collection of water quality and other environmental data—in a watershed, within the collection system, at end-of-pipe, or in a receiving water—that aids in analyzing program effectiveness or answering other management questions.
- **Evaluation:** An analysis of non-water-quality/environmental data and information about activity and BMP implementation that aids in determining whether a program, program element, activity, or individual BMP is meeting its intended objectives, or in answering other management questions.
- **Tracking:** Compiling and managing data and information (including the use of electronic databases and other systems to document program information).
- **Reporting:** Presenting information to regulatory agencies or other stakeholders to demonstrate program implementation or effectiveness.
- **Assessment:** An analysis of the overall effectiveness of an MS4 program; can be improved with information from monitoring and/or evaluation.
- **BMPs:** In the narrower sense used in this report, structural treatment or source control measures that are intended to result in measurable water quality outcomes.
- **Activities:** In the narrower sense used in this report, other program implementation actions (e.g., public education and participation, facility site inspections) that primarily result in outputs rather than immediately measurable water quality outcomes.

The intent in distinguishing these terms was to emphasize the importance of collecting and assessing different types of data and information necessary to inform assessments of the effectiveness of *all* facets of MS4 program implementation.

INTRODUCTION



Photo: EPA

MS4 programs are often inherently complex for multiple reasons—including large geographic areas, many pollutant sources, a mix of program activities and BMPs, transport of stormwater flows above and below ground in natural and manmade systems—and “stormwater program managers find themselves facing increasing pressure to demonstrate the effectiveness of their programs” (CASQA, 2015). This pressure comes both from regulatory agencies (which focus on assessing compliance with regulatory requirements) and local program managers, elected officials, and funders (who focus on services and their perceived value to the public). Further, local programs’

ability to carry out MS4 program requirements is often resource-constrained, making it increasingly vital to prioritize activities with outcomes that serve the community and environment. However, local program capacity to identify improved methods for assessing program actions and identifying the most effective implementation strategies remains limited.

MS4 permitting authorities play a key role in determining how MS4 programs must conduct monitoring, evaluation, tracking, and reporting. Many permitting authorities are understaffed, underfunded, or lacking in technical expertise concerning design of program assessment methods. As a result, many states have limited capacity to work with permittees to improve monitoring and evaluation approaches and associated permit requirements. In many cases, states also devote little effort to evaluating data and information collected and reported by permittees. Any initiative to improve MS4 assessment frameworks will require engagement both by permittees and permitting authorities, informed by careful analysis of past “lessons learned” in program implementation and analysis.

As the term “effectiveness” is not explicitly defined in the Clean Water Act or EPA regulations, it has proven particularly difficult to demonstrate—one of the largest problems facing the national MS4 program. Much time and money is spent on monitoring efforts that are not designed to answer key questions about program effectiveness or guide program improvement.

While the MS4 program has evolved in response to new information and tools, significant opportunities for improvement remain. EPA convened a small group of stakeholders in late 2017 to assess the MS4 program at large and identify the most impactful opportunities for strengthening permits and building program capacity. This report presents the discussions and ideas from a follow-on workshop EPA held in March 2018 that focused on approaches to monitoring, tracking, evaluation, and reporting.

The workshop featured stormwater experts from across the country, but a majority of its participants were from California. As a result, its deliberations and findings may overly represent issues, approaches, and perspectives developed in that state.

In December 2017, EPA convened a workshop on MS4 program minimum control measures, industrial program requirements, and water-quality-based control requirements. The resultant white paper, *Evolution of Stormwater Permitting and Program Implementation Approaches* (EPA, 2018), captures workshop discussion and recommendations for program improvement and provides background information on the overall MS4 program.

With no standardized approach to assessing program effectiveness across the country, workshop participants concurred, there is an opportunity to create a better mix of water quality monitoring, evaluation, tracking, and reporting requirements that will strengthen links between program assessment and management decisions. Several participants believed that similar convenings in other parts of the country would identify opportunities to improve MS4 program implementation, assessment, and permitting in ways that are sensitive to regional differences in program evolution and approaches.

“Monitoring should be a way to change incrementally the standard—not punish the willing. Management and permitting actions must evolve as experience leads to opportunities for improved practice and better-informed expectations” (WEF, 2015).

This report synthesizes workshop participants’ ideas for improvements to monitoring, evaluation, tracking, and reporting along with other existing research. Section 3 presents the full set of recommendations, accompanied by discussion overview, related actions, case studies, and, where possible, some indication of commitment by stakeholder groups or organizations (e.g., trade associations, permittees, states, universities) to make progress in a given area. Inclusion of a recommendation in this report does not necessarily indicate the support of all workshop participants; rather, it is intended to stimulate further discussion, inquiry, and possible progress.

1 MS4 WORKSHOP

In March 2018, EPA Region 9, with assistance from EPA Headquarters and in partnership with the State of California, invited 31 stormwater experts from across the country to Oakland, California, for a two-day workshop titled *Improving Stormwater Permit Approaches to Monitoring, Evaluation, Tracking, and Reporting*. The workshop was designed to explore current requirements and practices for municipal stormwater program monitoring, evaluation, tracking, and reporting and identify opportunities for improvement that would support more effective program implementation. Its primary goals were to identify (1) how permits can direct or incentivize these improvements, (2) what methods could be used to support these improvements (e.g., training, guidance, identification of best practices, research), and (3) what entities within the sector could help effect these improvements in permitting and program practice.

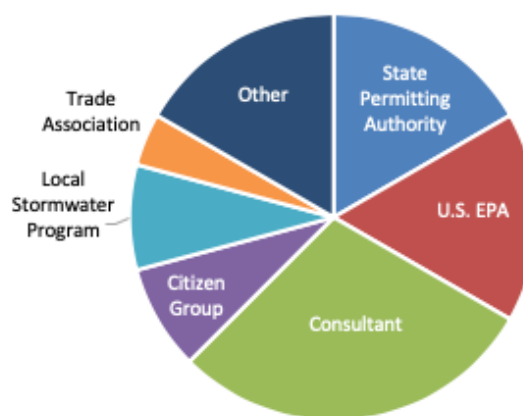


Figure 1. Distribution of workshop participants across the sector.

Through facilitated dialogues, invited representatives from federal, state, and local government, as well as sector stakeholders (e.g., permit holders, trade associations, citizen groups, and academia), evaluated MS4 program monitoring, evaluation, tracking, and reporting approaches to inform possible changes in NPDES permit provisions and identify opportunities to improve MS4 programs. To promote honesty and openness, participants agreed that the viewpoints expressed

would not be attributed to individuals in this resultant report. (A full list of workshop participants is included in Appendix A.)

As noted above, this workshop was a follow-on to a prior event that focused on MS4 program minimum control measures (MCMs), post-construction program requirements, and water quality-based control requirements. The white paper for that first workshop, [Evolution of Stormwater Permitting and Program Implementation Approaches](#), captures discussion and recommendations for program improvement and provides background information on the overall MS4 program. This report does not duplicate that background information; instead it focuses directly on the workshop discussions and recommendations for improvement to monitoring, tracking, evaluation, and reporting.

1.1 Workshop Format

The workshop included seven sessions over two days in a format designed to identify recommendations specific to monitoring, evaluation, tracking, and reporting approaches (full agenda included in Appendix B). Each workshop session had the same general structure: a conversation starter, facilitated group discussion, and identification of important findings and specific actions to strengthen and improve approaches to monitoring, tracking, evaluation, and reporting.

Workshop Sessions

1. Current Condition—Are Current Monitoring, Evaluation, Tracking, and Reporting Requirements Effective?
2. How Can We Better Use Performance Metrics to Facilitate Improved Monitoring, Tracking, Evaluation, and Reporting?
3. How Can We Make Outfall and Receiving Water Monitoring More Useful?
4. Linking Activities to Expected Water Quality Outcomes
5. How Can We Improve Program Performance Tracking?
6. Reforming Reporting Approaches to Help Move Programs Forward and Give Permitting Authorities What They Need
7. Reflection, Synthesis, and Wrap-Up

This report captures the essence of these conversations so that others may benefit from the collective expertise. EPA plans to continue working with various partners and stakeholders to refine and implement the most promising ideas for strengthening MS4 programs through improved monitoring, tracking, evaluation, and reporting and enabling new, innovative permitting approaches.

1.2 Pre-Workshop Questionnaire

In advance of the workshop, participants were polled to gauge their attitudes toward specific aspects of the permitting program by responding to a series of hypotheses. Twenty-four submissions were received in total. Respondents overwhelmingly agreed that there was potential to realize cost-effective positive environmental outcomes through better approaches to monitoring, tracking, evaluation, and reporting.¹

¹ Participants could also respond “no opinion or insufficient knowledge.”

Table 1. Response to the pre-workshop questionnaire rating the potential for significant improvement toward cost-effective environmental outcomes for each element.

	Significant or Some Potential	Little or No Potential
Water quality monitoring (receiving water, outfall, within collection system, at project or practice scale)	100 percent	—
Non-water-quality evaluation (activity evaluation, effectiveness evaluation)	88 percent	8 percent
Tracking (tracking discrete activities [e.g., inspections, street sweeping, BMP installation], active asset management planning and tracking)	100 percent	—
Reporting (annual reporting to permit authorities, reporting to public or elected officials)	88 percent	12 percent

The survey also sought participants’ reactions to a series of hypothesis statements to help determine the degree of alignment in opinions before the meeting. There was strong support for many statements on the pre-workshop questionnaire, which helped frame onsite discussion and can help orient further consideration of changes in monitoring, tracking, evaluation, and reporting. Select statements are rated below.

Table 2. Responses to select hypothesis statements in the pre-workshop questionnaire.

	Strongly Agree or Agree	Strongly Disagree or Disagree
<i>Monitoring designs must go beyond just data collection methods to include data management, data analysis, and reporting formats that clearly link data collected with performance metrics.</i>	100 percent	—
<i>Performance metrics need to be established in concert with improved monitoring designs and methods.</i>	96 percent	—
<i>Metrics should enable evaluation not just of what was done, but also of whether those actions were effective.</i>	96 percent	—
<i>No one monitoring and evaluation method addresses all the assessment needs; multiple approaches tailored to local circumstances are needed.</i>	92 percent	4 percent
<i>Better guidance and training on new reporting frameworks and how to incorporate them in permits will be needed to advance reporting approaches at the state and local levels.</i>	92 percent	4 percent

Respondents provided further insights and suggestions through the pre-workshop questionnaire. One recurring theme was that assessing effectiveness cannot be accomplished through a “one size fits all” approach. Two respondents captured these sentiments as follows:

“There isn't one right answer for every program, but there must be a better monitoring/tracking/assessment framework that could be used to build more effective programs across the country.”

*“Effectiveness assessment is element-specific. No one measurement fits all. So, rather than specifying a measurement, specify a process to follow between the different elements to identify the appropriate measurement, etc. Process would be something like: **Inquiry** (question, permit requirement, exceedance) → **Pollutants of concern (POC)** → **BMP** → **Effectiveness measurement** → **Effectiveness methodology** → **Report.**”*

Additional questionnaire findings are incorporated throughout the report, where applicable; Appendix C summarizes questionnaire results.

1.3 Defining “Effectiveness”

A purpose of the workshop was to explore the concept of “effectiveness” and how MS4 programs and permits can be improved to orient monitoring, evaluation, tracking, and reporting towards demonstrating effectiveness. While many MS4 permits require local programs to evaluate the effectiveness of their efforts, there is significant ambiguity around what “effectiveness” means for MS4 programs—is it a measurable water quality outcome? Completion of required activities? Achievement of other co-benefits² through infrastructure improvements? Or a combination of these?

Participants at the December 2017 and March 2018 workshops were asked to describe the key elements of MS4 program effectiveness; common themes emerged, but there was significant variation in the responses. Based on responses from the pre-workshop questionnaire, key elements include:

- A clear definition of performance metrics (or measures) using common objectives and concise language.
- Results such as enhanced awareness and behavioral change.
- Reduction in urban stormwater pollution and mitigation of the impact on receiving waters.
- Tracking progress to ensure accountability of outcomes.
- An ability to measure and communicate quantifiable outcomes and benefits to communities.

“Effectiveness Assessment consists of the methods and activities that managers use to evaluate how well their programs are working and to identify modifications necessary to improve results” (CASQA, 2015).

² For example, reduction in flood risk, improvement in urban aesthetics and amenities through the use of green infrastructure, and water supply augmentation.

These select responses from the pre-workshop questionnaire describe **key elements of MS4 program effectiveness**:

“Clear and measurable performance metrics and the ability to gauge activities and actions versus those metrics.”

“Ability to establish a relationship between the BMP/action/activity and a reduction in pollutant loads.”

“Ability to show water quality improvement, behavior change, and an overall understanding of the benefits and challenges associated with urban stormwater.”

Given the variation in responses and known difficulty in defining effectiveness, this report does not attempt to create a single definition—or suggest that a single definition is feasible or needed. Rather, defining and determining effectiveness should occur at the permit, local, or regional scale and be based on the unique conditions, objectives, and resources of the area. Additionally, limitations in the ability for monitoring to effectively and efficiently determine effectiveness must be considered. Throughout this report, the authors highlight various and situationally unique definitions of effectiveness. These show the various applications of effectiveness within the context of MS4 programs and how monitoring, evaluation, tracking, and reporting could be improved to facilitate a determination of effectiveness.

Workshop participants also wanted to address a common misconception that effectiveness is mostly synonymous with compliance. For example, a MS4 program could be compliant with its discharge permit but not effective in addressing local or regional water quality problems, producing desirable co-benefits, or meeting other objectives.

2 OVERVIEW OF CURRENT (AND PAST) MONITORING AND ASSESSMENT APPROACHES AND EFFORTS

Currently, permittees and regulatory agencies often evaluate program effectiveness through a combination of monitoring, evaluation, tracking, and reporting efforts. Though these requirements in MS4 permits are intended to enable iterative improvements, many local programs do not systematically use their data in this way. Moreover, regulatory agencies often do not make full use of reported data and information to assess permit compliance or to tailor future permit requirements to better meet information needs.



Photo: EPA

Stakeholders at the March 2018 workshop were asked to consider improvements to monitoring, tracking, evaluation, and reporting. As a backdrop for these workshop discussions, there was acknowledgement that many current approaches may not enable local program managers to detect water quality changes and correlate MS4 program actions with outcomes. There are also many instances where new requirements have been added to permits without careful consideration of how performance should be evaluated, and program actions adjusted over time. This has increased the resources needed for monitoring, tracking, and/or reporting efforts and resulted in often lengthy and intense reporting efforts for permittees with little perceived benefit to the permittee, regulator, or water quality.

Note, though, that there are diverse views on the need to improve stormwater monitoring, tracking, evaluation, and reporting. Some believe their MS4 programs are stable and reasonably effective, and therefore, not in need of significant updating.

2.1 Variation in Approaches

The national MS4 program was rolled out in two phases: Phase I targeted medium and large communities and industrial facilities, while Phase II addressed smaller communities and other non-municipal entities. Both Phase I and Phase II regulations require permittees to assess their stormwater control measures (i.e., BMPs) and perform some level of reporting to regulatory authorities. However, variability within the regulations and differences in priorities of permitting authorities have led to significant variation in the way monitoring, evaluation, tracking, and reporting requirements are represented in permits and subsequently met by permittees. For example, Phase I regulations require permittees to develop a monitoring program, and larger MS4s may have requirements that necessitate sophisticated sampling programs with annual expenditures of over \$1 million. While the Phase II program allows for monitoring, it does not require it; as a result, some MS4 permits may not require any monitoring program at all (EPA, 2010a). Furthermore, some authorities have taken markedly different approaches to permitting (and associated monitoring and evaluation provisions) for each category of MS4 permits.

Workshop attendees indicated that the costs of stormwater monitoring and evaluation (and associated tracking and reporting mechanisms) are poorly understood. Across the United States,

MS4 program investments in monitoring and program evaluation vary a great deal, reflecting the wide diversity of municipal stormwater systems, water quality issues, and regulatory requirements. Without better information on the costs of alternative monitoring, evaluation, tracking, and reporting approaches, it will be difficult to make appropriate changes in how we assess program effectiveness and adjust program management. Several participants urged a more focused effort to evaluate costs of different program assessment frameworks to help identify cost-effective opportunities for improvement.

EPA's white paper from the 2017 workshop provides background on MS4 program changes over time. It describes a general progression from an initial focus on MCMs to more focus on post-construction stormwater management and low impact development, and then to an increased focus on water quality-based and total maximum daily load (TMDL) requirements. The tools and approaches for capturing, tracking, and reporting information have also evolved and currently range from hardcopy maps and documents to sophisticated geographic information system-based mapping, asset management software, and modeling. Furthermore, permittees are using different approaches to water quality monitoring and program evaluation at different scales and with different technologies.

2.2 Examples of Approaches

The following list presents several examples of different monitoring and evaluation approaches from across the country.

- Through its principal permittee and a regional monitoring group, **Los Angeles County MS4 permittees** monitor receiving waters and in-system locations for some design storms. Cause and effect connections are inferred between actions taken in the monitored watershed and water quality responses. Modeling (based on estimated effectiveness for existing BMPs and anticipated load reductions for new BMPs) is also used by permittees to estimate the likely overall effect of BMP implementation within watersheds and assist BMP targeting. The Los Angeles County MS4 permit gives permittees flexibility in designing integrated monitoring programs that leverage resources for multiple benefits and collect data from representative locations.
- **Minnesota Phase II MS4 permittees** are encouraged to focus on implementation of minimum measures and not required to conduct monitoring. The State of Minnesota administers a statewide surface water monitoring program funded by a voter-supported measure. It is assumed that recommended BMPs and other implementation actions are effective and that there is a positive correlation between MS4 program implementation actions and water quality benefits.
- **Washington, D.C.**, has used geographically targeted BMP implementation and monitoring to detect “signals” in water quality change based on intensive implementation of green infrastructure BMPs in the specified area. Information gained at the smaller scale is extrapolated to evaluate larger-scale implementation. The efforts include interim measurable milestones so the evaluation timeline is constrained.
- The **City of Salinas** in California's Central Coast region has experienced an evolution of approaches since 2005, when there was a weak connection between water quality monitoring and program effectiveness. The program has moved from trying to assess the effectiveness of different program activities to focusing more on treatment control BMP assessment and

outfall load-based monitoring at several locations. This effort has been coupled with a web-based dashboard for tracking progress, guiding adaptation, and providing information to regulators.

Workshop participants recognized that monitoring is conducted for different purposes and that monitoring designs can and should vary accordingly.

- For example, **compliance**-related monitoring is often wider in geographical scope but shallower in coverage. This type of monitoring is conducted by many, if not most, permittees. During the workshop, there was extensive discussion of whether the “wide but shallow” approach to compliance monitoring supports effective, discriminating program assessments.
- In contrast, BMP **effectiveness** evaluation is usually conducted in fewer (but hopefully representative) locations in greater depth. This type of evaluation can be conducted by different organizations but is done with the understanding that it need not be repeated by every permittee if it was well-designed at the outset. Attendees discussed whether existing BMP effectiveness evaluation to date provided enough information about BMP performance in addressing different settings and pollutants.
- Finally, workshop attendees also discussed water quality **trend** monitoring. Trend monitoring may be related to compliance monitoring. Participants noted that associating changes in water quality with changes in stormwater management practices and actions is desirable but analytically very challenging from a monitoring design standpoint.

During the workshop, participants generally agreed that it is very important to distinguish among differing monitoring objectives in setting expectations and clarify management questions that monitoring should address during the design process.

For additional context, a workshop participant has characterized their views on how MS4 programs has evolved—including overall conditions, approaches, and lessons learned—since the early 1990s (see Table 3 on the following pages). This is intended to provide a general point of orientation to provoke thought and further discussion. It does not attempt to capture the status or changes in all programs nationwide.

Table 3. General observations on the evolution of MS4 programs.

	Early Generation Permits (1990s)	Middle Generation Permits (2000s)	Recent Generation Permits (2010s)
Overall Conditions	<ul style="list-style-type: none"> Programs had limited knowledge of system assets, and there were few known water quality drivers to direct program implementation. 	<ul style="list-style-type: none"> System assets were better known, and there was increasing awareness of the need to address specific water quality issues (often through TMDLs) and to begin iterative program improvements. Newer data management tools were starting to be used and some information on BMP effectiveness was becoming available. 	<ul style="list-style-type: none"> There is more focus on specific POCs, largely driven by TMDL provisions in MS4 permits. There is more concern about asset management and long-term maintenance of system assets. There is a broader focus on stormwater impacts and value beyond water quality (e.g., water supply augmentation, flood risk, urban amenities/climate impacts). New automated and sensor-based monitoring methods can enable different monitoring designs.
Approaches	<ul style="list-style-type: none"> Monitoring efforts were mainly focused on characterizing flows from the system and establishing baseline monitoring data for urban water quality conditions and trends. Sampling was required for a few storms per year, with little to no sampling during dry weather. Sampling was rarely conducted from MS4 outfalls; instead, it was done at convenient locations in the lower parts of watersheds to characterize “mass emissions” from all upstream MS4 discharges (often comingled with other sources and infiltration). Permittees typically designed their own monitoring programs. Permittees carried out paper reporting of water quality data and other program activity measures (e.g., inspections, street sweeping) through qualitative descriptions and/or semi-quantitative information. 	<ul style="list-style-type: none"> More elaborative MCM requirements and narrative requirements to meet water quality standards (WQS) were included in permits. Some permits included numeric triggers or action levels for POCs and requirements for low impact development approaches for new/redevelopment. Some permits began to use surrogate indicators (e.g., flow retention, impervious cover) to reduce flows and pollutant loadings and protect receiving waters from geomorphic impacts. Monitoring efforts were mainly focused on receiving waters (rarely outfalls) to determine whether WQS were being met and whether MS4s were causing or contributing to exceedances. Permittees continued visual inspections of assets, BMPs, and dry weather flows and documented their occurrence in annual reports. There was rarely an analysis of their effectiveness. 	<ul style="list-style-type: none"> Permits include more specific water-quality-based requirements, often connected to TMDLs. Permit structure varies depending upon whether goals are expressed in terms of outcomes (numeric limits or triggers) or activities (BMP systems based on analysis of needs). Models are increasingly used to inform long-term program design and predict necessary control levels. MCMs remain but, in some instances, focus on a subset that are viewed as more effective. Adoption of asset management allows for operations and maintenance (O&M) activity reporting and a determination of optimal asset inspection and maintenance schedules. There is less of a focus on basic water quality trend monitoring in receiving waters and more of a focus on representative outfall monitoring to help evaluate causation. There is an increasing use of automated samplers but in limited locations.

	Early Generation Permits (1990s)	Middle Generation Permits (2000s)	Recent Generation Permits (2010s)
Lessons Learned	<ul style="list-style-type: none"> • Monitoring program designs rarely enabled key management questions (including compliance questions) to be answered based on the collected data. • Insufficient data was collected to detect pollutant trends in receiving water or distinguish among contributing land uses or geographical areas. • There was insufficient evaluation and reporting to ensure that stormwater controls (e.g., post-construction BMPs) were installed and properly maintained. • There was insufficient data or analysis to evaluate effectiveness of MCMs or other activities/BMPs in addressing specific water quality concerns. 	<ul style="list-style-type: none"> • There was still insufficient data collected to detect pollutant trends in receiving water or distinguish relative contributions from different land uses, geographical areas, or individual permittees. • Monitoring designs did not support robust statistical analysis or provide a link between receiving water impacts and specific MS4 discharges (i.e., unable to answer the key question of whether the MS4 was causing or contributing to a WQS exceedance). • There was still insufficient data and analysis on BMP effectiveness to determine whether installed BMPs were resulting in the intended benefits. • Reporting and program evaluation still did not thoroughly address the effectiveness of MS4 programs in creating the desired water quality outcomes. 	<ul style="list-style-type: none"> • Improvement is still needed to evaluate the effectiveness of activities performed under the MCMs. • In many cases, program implementation and monitoring requirements continue to mount while few are removed from permits. • New sensor technologies are not widely being used in monitoring program design. • Much receiving water and outfall monitoring still does not facilitate source analysis, compliance evaluation, or effectiveness evaluation. • There is a need to better understand how increasing reliance on modeling affects monitoring and reporting needs. • Modeling capacity and monitoring design will need to evolve to better account for non-water-quality intended benefits (e.g., water supply augmentation through infiltration, reduced flood potential, heat island impact reductions).

2.3 Existing Assessment/Evaluation Efforts and Resources

Since the MS4 program began, several entities have articulated potential improvements for program monitoring, evaluation, tracking, and reporting approaches. Even so, there is still a clear need for more concise and reproducible approaches to monitoring and evaluation that yield actionable information with links to water quality outcomes. Further, additional training for permit writers and permittees is needed to build overall capacity relating to monitoring and evaluation strategies.

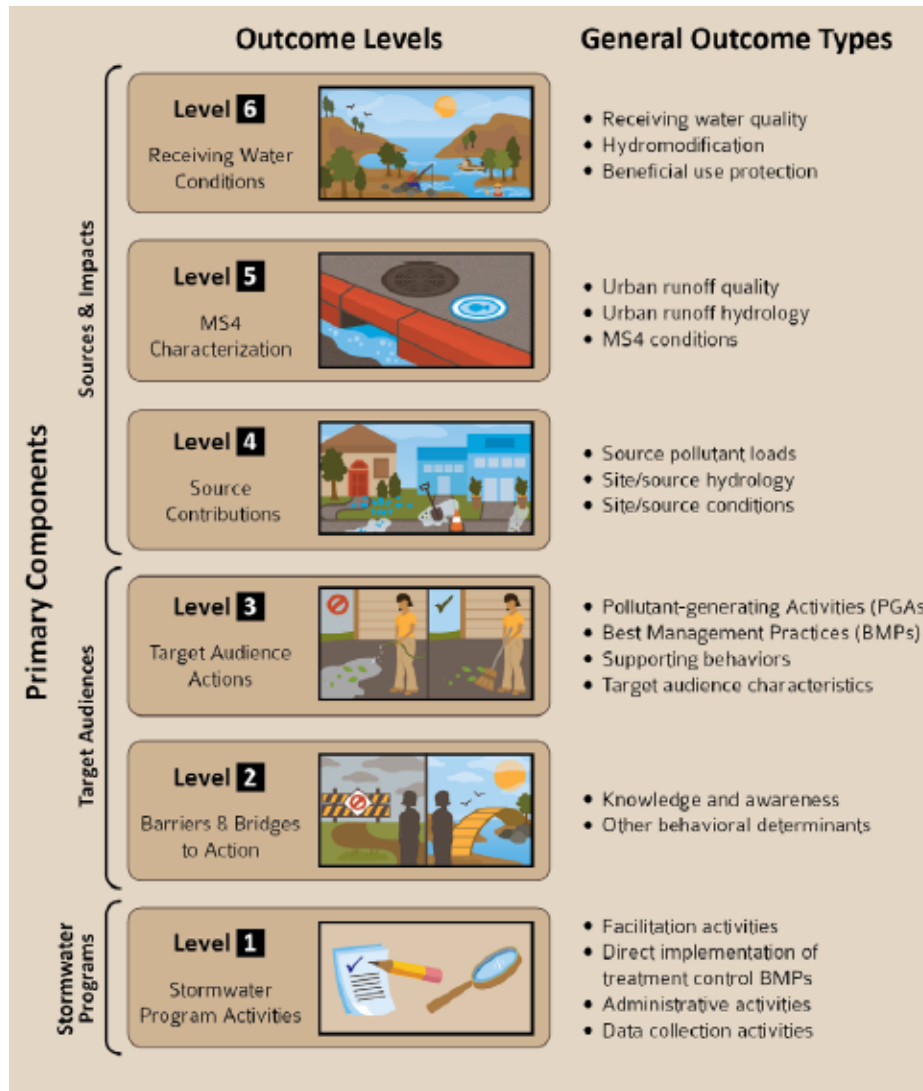
Among the existing resources are the following:

- **EPA Region 3's** [*Evaluating the Effectiveness of Municipal Stormwater Programs*](#) describes a process of goal setting in stormwater management programs (SWMPs), matching evaluation to management goals, evaluating SWMP effectiveness through a combination of program operations (e.g., activities), social indicators, and water quality monitoring. The excerpt below displays an example of this process.

“Evaluation of the effectiveness of a SWMP must relate directly to its goals. Two central questions are: *Are we meeting the municipal SWMP goals?* and *Are we meeting NPDES stormwater regulatory requirements?* If a goal is to keep a swimming beach open, it is often necessary to determine the extent to which water quality criteria for bacteria are being met. If a goal is to reduce nutrient loads by 40% from a watershed, it is then necessary to measure nutrient loads and compare measured loads against the goal.

“Meeting your water quality goals is the ultimate sign of program success, however, meeting programmatic or social goals can also be indicators of a successful program. Information on how these goals are met will serve as critical feedback in the iterative process of stormwater management” (EPA, 2008).

- The **California Stormwater Quality Association (CASQA)** has also done significant work related to MS4 program effectiveness assessment and monitoring since the early 2000s. CASQA’s most recent guide, [*A Strategic Approach to Planning for and Assessing the Effectiveness of Stormwater Programs*](#), is a comprehensive 500-page reference intended to “establish specific ‘how to’ guidance with examples for managers in planning and assessing their MS4 programs” (CASQA, 2015). The document introduces six key outcome levels that provide “structure and measurability to evaluate and improve Stormwater Management Programs over time.” The outcome levels (shown in Figure 2, below) provide a basis for discussion of how progress can be measured for MS4 program elements through monitoring or other means. This is an important resource to consider while developing a vision for the future of stormwater monitoring. CASQA also developed a [*Program Effectiveness Assessment and Improvement Plan Framework*](#), an approach and format for permittees to assess and document MS4 program effectiveness based on their guidance document. Many MS4 permittees in California are required to use this, or a modified process, to perform effectiveness assessments.



Graphic from CASQA, 2015; included with permission

Figure 2. CASQA stormwater quality outcome levels.

- The [Southern California Stormwater Monitoring Coalition](#) (SMC), a collaborative effort with 14 member agencies (both regulated and regulatory), focuses on developing resources and tools for its members to “better understand stormwater mechanisms and impacts” and help “effectively and efficiently improve stormwater decision-making” (SMC, n.d). The SMC is further discussed later in this report.
- EPA’s [MS4 Program Evaluation Guidance](#) is a guidance document developed for state and NPDES permitting authority staff to evaluate compliance and effectiveness of MS4 programs. This document has served as the basis for compliance audits since its publication. The document notes that “the findings of the MS4 evaluation should not be based solely on the level of achievement of measurable goals. It is important, however, that the permittee’s SWMP includes the use of measures to assess progress towards meeting goals that benefit water quality and not rely on ‘bean-counting’” (EPA, 2007).

- **The California State Water Resources Control Board’s** [*Guidance for Assessing the Effectiveness of Municipal Storm Water Programs and Permits*](#) was developed to help both the state and regional water boards assess the effectiveness of the stormwater programs implemented by local agencies. The document incorporates CASQA’s outcome levels in its process and “lays out a framework for assessing the effectiveness of MS4 program implementation as a whole, rather than looking at the individual programmatic elements” (CASWRCB, 2010).
- **The Center for Watershed Protection’s** [*Monitoring to Demonstrate Environmental Results: Guidance to Develop Local Stormwater Monitoring Studies Using Six Example Study Designs*](#) presents designs to help communities develop monitoring studies that will improve local stormwater programs (CWP, 2008).

Programs across the country currently fall in different places along the continuum of program implementation. There remains a need to improve and tailor monitoring, evaluation, tracking, and reporting approaches to better determine the effectiveness of different program actions and strategies and facilitate adaptive management over time.

2.4 Conceptual Effectiveness Assessment Framework

Though different terms are used across the country—reflecting real differences in program requirements and approaches—there are relevant general concepts that can broadly be viewed as “monitoring, evaluation, tracking, and reporting.”

“Monitoring, evaluation, tracking, and reporting” is how MS4 programs:

1. Pose key management questions to answer through monitoring and evaluation.
2. Sample stormwater runoff and/or receiving waters.
3. Document and evaluate implementation of program activities and BMPs.
4. Synthesize and analyze results.
5. Track implementation actions and effectiveness.
6. Report to permitting authorities.
7. Make program changes in response to effectiveness assessments.

Together, these steps constitute a general program assessment framework that should help with decision-making and adjustment by local program managers and compliance evaluation and permit adjustments by permitting authorities. To gain a more comprehensive view of a program’s effectiveness, many workshop participants expressed a need to tie activity tracking information (i.e., non-water-quality data) with water quality data obtained through monitoring (e.g., routine monitoring, special studies). Over time this integrated dataset could be tracked and assessed to identify a program’s function and effects, and a permittee could report this information and lessons learned as needed (or requested by the permitting authority).

Figure 3 illustrates the relationship between these different types of information and actions, emphasizing integration of water quality monitoring with program implementation activities. Many MS4 programs implement parts of this framework; however, few conduct fully integrated analyses of program effectiveness that serve as the basis for compliance evaluations and program improvements. Workshop participants recognized that this framework represents a vision that will

be challenging for many MS4 permittees to implement—but they noted that many permittees continue to implement their existing programs with little understanding of whether they are effective. By building understanding of, and capacity to implement, more integrated assessment approaches, communities should be able to improve how they collect and use data and information to assist program improvement.

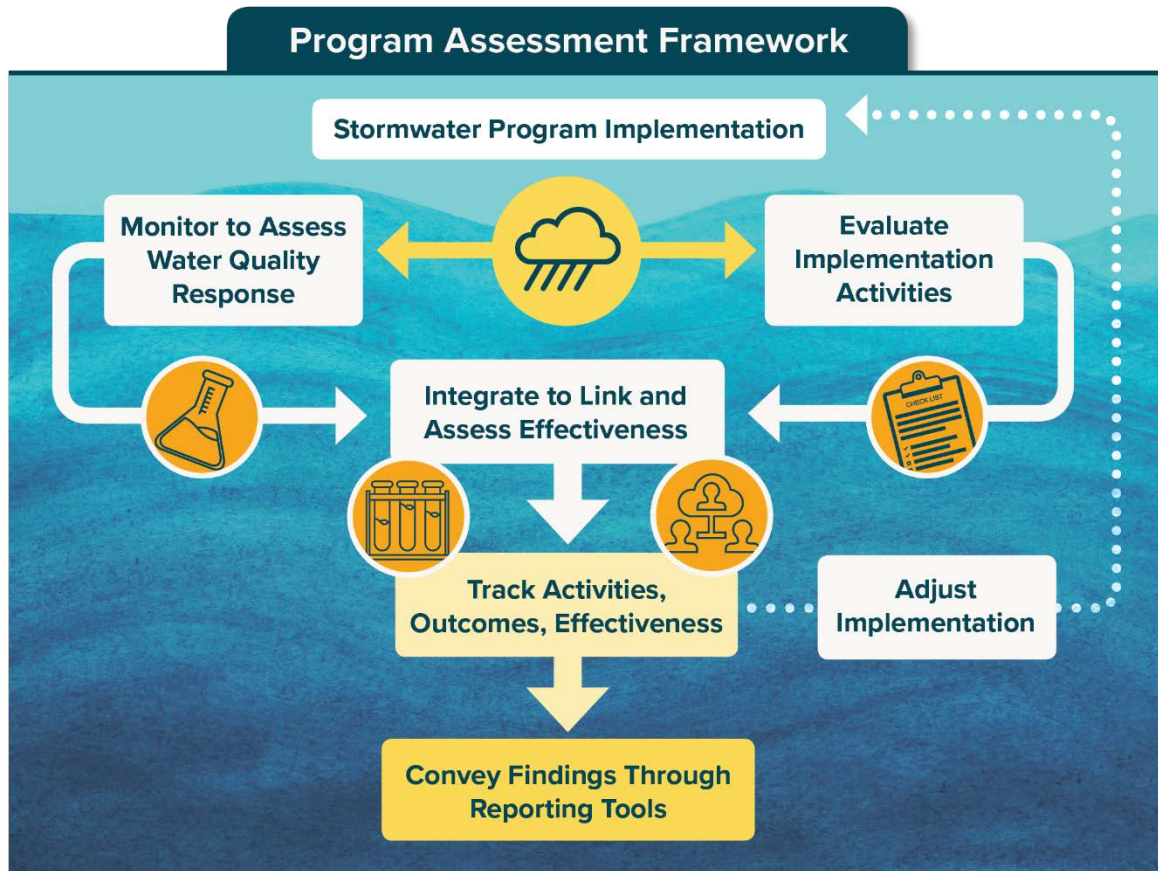


Figure 3. Conceptual program assessment framework, highlighting the link between water quality monitoring and evaluation of implementation activities to inform adjustments to program implementation.

3 RECOMMENDED PROGRAM AND PERMIT IMPROVEMENTS

During the workshop, facilitators encouraged participants to identify tangible ways to improve the design and implementation of (1) monitoring and evaluation tools to assess program effectiveness and (2) tracking and reporting approaches that enable better use of available monitoring and evaluation information. These conversations generated a wide range of recommendations that can be organized under the following broad headings:



Photo: EPA

- **General capacity building and program support** (Section 3.1)
- **Improving permitting strategies** (Section 3.2)
- **Making outfall and receiving water monitoring more discriminating to inform program management** (Section 3.3)
- **Improving our ability to quantify effectiveness—approaches to link water quality outcomes to actions** (Section 3.4)
- **Improving program tracking and reporting** (Section 3.5)

Together, these discussions and recommendations are ultimately intended to spur the creation of a better overall program assessment and adaptation framework that will help local program managers across the country. The set of recommendations in this report is not definitive nor is it exhaustive; rather, this report is intended to inspire further discussions and follow-on actions. References to select projects or organizations are incorporated throughout to serve as case studies and examples of related efforts.

3.1 General Capacity Building and Program Support

While approaches to monitoring, evaluation, tracking, and reporting can be viewed in their own lanes, they are intrinsically linked and, to some degree, need to be considered collectively to identify meaningful improvements. Workshop discussions often focused on this holistic view and resulted in several overall recommendations to build integrated capacity. Collectively, the following strategies could improve overall MS4 program effectiveness and water quality outcomes.

3.1.1 Develop a Vision for the Future of Stormwater Monitoring to Improve MS4 Program Efficiency and Effectiveness

During the workshop, participants identified a lack of a central vision for why local programs perform monitoring—what questions we need to answer now and into the future—and for how monitoring efforts relate to program evaluation, tracking, and reporting. They highlighted significant inefficiencies in how these activities are typically carried out and noted potential for improvement with benefits for local programs, regulators, and water quality. Notably, participants expressed concern that many municipal stormwater monitoring efforts are resource-intensive and yield little actionable information for management decisions or generate the same information year after year.

Some participants also emphasized an acute need for models to enhance program capabilities for planning and program assessment; otherwise, water quality monitoring across large geographic areas and time scales can be resource-prohibitive. However, along with increased model usage comes a need for increased water quality monitoring data to inform and validate models.

Participants discussed what they envisioned to be key attributes of a more effective approach to monitoring and how it may intersect with other evaluation, tracking, and reporting efforts:

- Clear management questions related to water quality outcomes and activity implementation.
- A process for conducting effectiveness assessment that is tailored to the program element and the management questions being asked.
- Use of improved monitoring designs (location, scale, frequency, methods) to detect a “signal” or change in pollutant loading in stormwater or receiving waters for POCs.
- Monitoring efforts that complement activity tracking and assessment to better evaluate effectiveness of treatment or source controls (e.g., are they implemented correctly, receiving proper maintenance, and operating as expected?) and improve the basis for assessing cause and effect.
- Documented monitoring and evaluation designs coupled with identification of program modifications envisioned to improve effectiveness, inform program adjustment and new stormwater management initiatives, and achieve intended outcomes.



Photo: U.S. Army Corps of Engineers

As noted above, workshop participants identified pollution reduction, water quality protection/improvement, enhanced public awareness, and behavior changes as some key elements of program effectiveness. To achieve these outcomes and guide program implementation, workshop participants also noted a need for clear program performance metrics (further described below in Section 3.1.3).

Participants also recognized the need to distinguish between desirable assessment approaches that are reasonably well understood (but poorly disseminated and supported) and approaches that would benefit from further research and development. There was strong agreement that more needs to be done to train practitioners in the use of new monitoring, evaluation, and integrated assessment methods. Workshop participants also stressed that more basic research is necessary to develop new methods and validate their use in new settings and to address different pollutant types and hydrologic settings.

3.1.2 Develop a Guide to Monitoring and Evaluation to Better Serve MS4 Programs

Various approaches to monitoring and evaluation are used across the country. As described above, some involve a broader-scale, state-run surface water monitoring program that is somewhat associated with local MS4 programs; others involve a mix of receiving water and outfall monitoring and activity tracking and evaluation at the local jurisdiction level; yet others are implemented in

One hundred percent of pre-workshop questionnaire respondents agreed that *“Monitoring designs must go beyond just data collection methods to include data management, data analysis, and reporting formats that clearly link data collected with*

smaller watersheds to evaluate the effectiveness of specific types of stormwater control and treatment practices.

Workshop participants discussed a need to identify the range of effective monitoring approaches used and how they associate cause and effect. Further, some participants suggested using this effort to identify successful designs to inform a national-level guide on monitoring and assessing program effectiveness. This could promote consistency across the national MS4 program and enhance efficiency in local program implementation and efforts by

regulators during permit development and compliance review. (An example of issues caused by inconsistency: one participant described an evaluation which determined that 34 stormwater monitoring groups in southern California could not develop common monitoring questions due to differences in study designs, methods, or data management systems.)

The proposed guide could be informed by existing resources on monitoring and effectiveness, with help from the entities involved in those resources’ development and ongoing monitoring design efforts. Workshop participants suggested the guide should include the following elements:

- Framing key monitoring/evaluation questions and designing approaches to fit the questions. This could include alternative program designs with advice on assembling the components (e.g., receiving water, outfall, and in-system water monitoring; BMP effectiveness evaluation; activity tracking of treatment and source controls; modeling) to inform assessment of the overall program and demonstrate effectiveness. This should show how to build a sound analytical framework up front to demonstrate why a set of approaches will likely succeed in assisting program management and defining or tracking compliance and effectiveness.
- Considerations for adapting monitoring/evaluation questions over time, with a reasonable limit on the creation of new questions.
- Examples of successful local approaches that better associate monitoring/evaluation design with program effectiveness, compliance assessment, and the ability for program managers to make management decisions.
- Suggested evaluation methods to assess BMP effectiveness over time.
- Available monitoring technologies and best practices that clearly link the monitoring objectives with the experimental design, including all aspects of data collection, data management, data analysis, and reporting formats.
- Compiling monitoring program costs to help show the wide range of program expenditures, how monitoring data are used to inform program decisions, and how to better articulate the value of the data.
- Explanations of modeling approaches and how they can relate to monitoring and adaptive management.

Example Monitoring/Evaluation Questions

- *Are BMP systems now implemented in Sample Creek watershed sufficient to meet TMDL-based sediment limits? If not what additional BMPs are needed?*
- *Which land uses or sub watershed areas are principally responsible for copper loading?*
- *Have specific public education efforts resulted in measurable reductions in trash discharges? How much?*

Beyond the monitoring design elements, select workshop participants suggested that clearer direction is needed for the technical aspects of monitoring as well. Specifically, standard protocols and references are needed for appropriate equipment, protocols, site selection, sampling frequency, data management/analysis, and quality assurance. Program evaluators (e.g., regulators) also need guidance in assessing the technical “quality” of discrete monitoring program elements.

3.1.3 Establish Key Performance Metrics (Activity- and Outcome-Based) for MS4 Programs

Workshop participants agreed that clear performance metrics need to be established to enable meaningful MS4 program evaluation and monitoring. They discussed ideas for developing metrics that are valuable and can help define measurable outcomes. Several people suggested compiling possible metrics (from prior efforts such as rulemakings or new metrics), researching the efficacy of different metrics, and synthesizing the information to spur progress in this area.

Ninety-six percent of pre-workshop questionnaire respondents agreed that *“Performance metrics need to be established in concert with improved monitoring designs and methods”* and that *“Metrics should enable evaluation not just of what was done, but also of whether those actions were effective.”*

It was noted, however, that it may not be possible to identify meaningful performance metrics with measurable outcomes for some MCM activities. For example, it has proven difficult to identify appropriate metrics for the effectiveness of public outreach and facility inspection programs. Further, participants indicated that there should be specific considerations for the differences between treatment control BMPs (e.g., permanent stormwater controls) and source control BMPs (e.g., facility inspections) in setting performance metrics.

During a facilitated exercise, workshop participants brainstormed possible overall metrics of program performance that go beyond tallying activities or “bean counting”:

- Percent of impervious areas addressed for stormwater management.
- Condition or “cleanliness” of streets as an indicator of potential pollution from runoff.
- Percent of impervious surface areas directly connected to the storm drain system.
- Modeled volume of flow to the storm drain system used as a surrogate for pollutant contributions.
- Percent of waterbodies in a community that are fishable and swimmable.
- Loss of beneficial use of a waterbody (e.g., beach closure downtimes).
- Measured level of awareness of citizens regarding stormwater pollution and the community’s program.
- Increasing number of illicit discharges reported annually; indicating heightened awareness.
- Budget for stormwater infrastructure improvements.

The **American Water Works Association** has a benchmarking program for drinking water programs; no analogous program exists currently in the stormwater sector.

The **National Municipal Stormwater Alliance** (NMSA) is currently working with the **American Society of Civil Engineers** to develop a national stormwater “report card” since data on program performance is lacking.

Participants also discussed several MCMs and whether clear links could be drawn between program activities and

measurable water quality outcomes. It was easier to envision links for water-quality-based efforts such as stormwater management in new development and redevelopment through BMPs; activities like public education and outreach, construction site inspections, and outfall screening proved more challenging. One workshop participant characterized it this way: “There is an obvious desire to seek and set *outcome* rather than *output* performance metrics. However, MCMs are primarily or essentially low-cost prevention actions, which don’t lend themselves to measurable water quality outcomes.”

Questions remain: What are meaningful performance metrics for MS4 programs overall, as well as the individual program elements and MCMs? What mix of output and outcome metrics can guide programs in developing monitoring programs, assessing effectiveness, and performing tracking and reporting? Participants recognized the difficulty of making these links but emphasized the importance of better addressing this challenge.

Workshop participants suggested that more work will be needed to compile, evaluate, and disseminate information about existing performance metrics. For many types of program activities (e.g., public participation and some other MCMs), further research will be needed to develop and validate new metrics before implementation.

3.1.4 Identify Ways to Leverage Existing Data Sets to Improve MS4 Program Management Decisions

MS4 programs have collected, documented, and reported a significant volume of data on implementation and monitoring over the years. While some permittee representatives at the workshop lamented the amount of resources typically involved in tracking and reporting, they also acknowledged that the vast amount of data collected has the potential to inform program management decisions. For example, existing data sets on illicit discharge locations and types could be analyzed in concert with outreach information and awareness levels to identify trends and better direct program resources to address illicit and unpermitted discharges. In addition, many permittees have gathered significant water quality monitoring data; these data could be explored further to find more ways to tell the story of what is happening in a waterbody or watershed.

California’s [Storm Water Multiple Applications and Report Tracking System](#)

is a web-based platform for stormwater program (construction, industrial, municipal) permit applications and reporting. Workshop participants suggested that data in this system could be used to help inform some municipal stormwater program functions and priorities, especially as they relate to oversight of construction sites.

EPA’s [NPDES Electronic Reporting Rule](#)

(E-Reporting Rule) requires entities to electronically submit specific permit and compliance monitoring information instead of filing paper reports beginning in 2020; this presents a key opportunity to collect information, analyze data, and compare the results.

Workshop participants suggested that better data analytics tools, processes, and guidance need to be developed for program managers to (1) turn existing data into information, (2) use the information to more confidently make program management changes, and (3) collect better data to continue to feed the process. One inherent issue is that local programs use various mechanisms for tracking data and not all programs track the same types of data. This issue will need to be considered and addressed, and the development of new tools with tangible uses could encourage more consistency in data collection techniques.

Participants also discussed the possible use of data and information in annual reports submitted by local programs in a state or region. They noted that many NPDES permitting authorities do not have resources to fully review the significant quantity and volume of annual

reports submitted; however, those reports may contain some intermediate indicators of program performance that could readily be identified to provide feedback to permittees.

Trends observed in a group of annual reports in a state or region could be used to inform permittees of common issues and areas requiring more clarification or support to yield better program implementation. Many states or regions have municipal stormwater management groups that meet periodically and could serve as a forum for sharing this type of information—the issue is *who* will review these reports to identify common issues and trends. Though regulators are typically looked to for reviewing annual reports to determine compliance with implementation and reporting requirements, without full resources for regulators to fulfill this role it may be worth considering if other groups (e.g., nonprofits, university research students, watershed groups) could provide a routine review and analysis of publicly available annual reports. These groups could work with regulators to develop an approach that would bring more utility to the annual reports produced by permittees and help buoy program implementation in a state or region.

3.2 Improving Permitting Strategies

Eighty-eight percent of pre-workshop questionnaire respondents agreed that *“Stormwater quality monitoring has been largely ineffective in assisting compliance evaluation, problem targeting, and program improvement.”*

As noted above, many permitting authorities and permit holders believe there are significant opportunities to improve approaches to municipal stormwater program monitoring, tracking, evaluation, and reporting, and these improvements may be directed or better incentivized through permitting strategies. Workshop participants indicated that permit writers need additional training and guidance on best practices. Example permit language would also help with implementation.

As was noted in the first workshop, MS4 permitting programs are often understaffed and have devoted insufficient resources to provide and/or update technical and policy guidance, assist permittees in program improvement, and issue timely permitting decisions and compliance actions. Provision of adequate resources for EPA and state permitting offices will be critical to facilitating improvements in permitting and program development. It was recognized during the workshop that permitting authorities bear some responsibility for improving and validating program monitoring and effectiveness assessment methods and demonstrating how they can be authorized through permit actions.

3.2.1 Improve Clarity of Monitoring and Effectiveness Permit Requirements (Including Objectives, Methods, and Designs)

Workshop participants suggested that current permit designs for monitoring requirements regularly lead to long-term monitoring at geographic scales that do not enable detection of signals for program performance or establish cause and effect between program actions and water quality conditions. Further, there is often an aversion to modifying monitoring locations for fear of losing continuity in long-standing datasets. Some of this may be due to ambiguity in permit requirements or reluctance by permit writers to change requirements; it may also be an attempt to put the onus on permittees to develop monitoring programs without guidance to steer them toward more

Ninety-two percent of pre-workshop questionnaire respondents agreed that *“Training and outreach for permit writers, program staff, and elected officials on new methods and designs are needed to familiarize these groups with their benefits and limitations.”*

efficient and effective designs. Many permits also give equal weight to tracking and reporting for all aspects of program implementation, which can lead to highly resource-intensive efforts by local programs to record, compile, and summarize information for annual reporting.

Participants identified an overall need for permitting authorities to improve the clarity of monitoring and evaluation permit requirements and to use thoughtful methods/designs that will yield actionable data. Further, some participants noted that permits may be able to provide choices or flexibility for monitoring approaches and help incentivize better designs. Flexible permit requirements can support adaptation of monitoring to evolve with program needs, with the potential questions to be addressed changing over time. For such an approach to succeed, it may be necessary to discontinue some monitoring efforts to redirect resources to more pertinent or valuable monitoring.

To help permitting authorities understand various approaches being used across the country, EPA developed a [compendium series of MS4 permitting approaches](#). Part 3 focused on water-quality-based requirements and included a section describing monitoring and modeling approaches related to TMDLs and water body impairments. While this compiled information is helpful for understanding some relevant monitoring case studies, it does not evaluate what aspects of the efforts were successful or unsuccessful, identify benefits and limitations, or provide advice on what approaches are appropriate for certain scenarios. There is a continuing need to identify different approaches and extract the lessons learned and best practices to inform efforts by others in the sector.

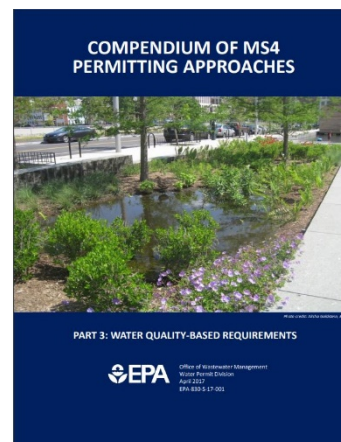


Figure 4. Water-quality-based requirements compendium that includes several monitoring program examples.

California's [Municipal Regional Stormwater NPDES Permit](#) for the San Francisco Bay area (adopted 2015) features a monitoring program that is driven by management questions, allows for scaling up to larger areas (county-wide or region-wide), accounts for different types of monitoring (e.g., receiving water status monitoring, POC monitoring), and includes stressor/source identification projects in response to monitoring findings. The permit provides directions on various methods to obtain relevant information to drive management actions. The monitoring requirements have attempted to provide a balance between directives and flexibility to allow permittees to seek optimum benefit from monitoring with available monitoring resources.

Note that increased clarity and better designs may not be possible until some of the abovementioned recommendations for capacity building and program support are followed. Training and other support tools will be needed to help boost permit writers' understanding and ability to improve approaches to monitoring, tracking, evaluation, and reporting.

3.2.2 Create a Pathway in Permits to Make Special Studies or Targeted Monitoring More Impactful

NPDES permits often include special studies or additional monitoring requirements to help gather data needed to explore identified issues and support future permit development. The [NPDES Permit Writers' Manual](#) notes that permits should set reasonable schedules for completion and include any requirements for these studies, such as special sampling or analytical procedures (EPA, 2010b).

Workshop participants indicated that many long-term or special studies have been completed, especially in California, but there often isn't the opportunity to apply the lessons learned from them. They urged that *if* special studies are required, there should be a clear pathway in the permit to apply what is learned. Some noted that a special study should be designed to address a specific topic; it should be short-term, with a discernible beginning, middle, and end—a process to obtain the answer to the question, apply the knowledge, make program and/or permit changes, and then move on.

Some participants described special studies as an opportunity to be more targeted in scope. They would not necessarily have to relate to overall program effectiveness; rather, they could be used to improve program operations. For example, a special study could be a testing ground for exploring the use of innovative technologies, sensors and screening devices, or remote sensing on smaller scales before a program makes a significant investment and a permit writer moves any associated requirements into the core permit. There could be a tiered approach that links the research field to the regulatory community to help field test new technologies.

The [Southern California Stormwater Monitoring Coalition](#), a collaborative effort with 14 member agencies (both regulated and regulatory), has conducted more than 20 projects over the past 14 years with a focus on topics such as (1) understanding runoff mechanisms and processes, (2) building monitoring infrastructure, (3) optimizing management strategies, and (4) assessing impacts and improvements in receiving water. While each SMC agency has spent less than \$500k on these efforts over the past 14 years, the members have leveraged these investments through in-kind contributions and grants to create a total investment of more than \$17 million. According to an SMC member, each of the projects undertaken by SMC has led to changes in the way the member agencies manage stormwater or implement NPDES permits.

One workshop participant discussed how special studies could more effectively be viewed within the construct of an overall monitoring approach.

- Special studies should explore very specific, complex questions. If the questions are answered, then the benefits could extend far into the overall MS4 program.
- Sophisticated equipment and protocols may be needed for special studies, though the outputs should be simple and applicable to help a program adapt.
- Not all permittees should be asked to perform special studies—there should be fewer, more specific special studies to answer questions facing the program.
- Some questions (e.g., BMP effectiveness) may not be appropriate to address through permits; outside parties should be engaged to help.

In summary, participants saw an opportunity to improve how the results of special studies are applied to not only the programs that conducted the studies but, in some cases, the larger community of MS4 programs. However, at present, there is a gap in bringing this knowledge to the broader program. A dedicated institution (e.g., an academic or research organization) may be best suited to serve as a hub to gather, evaluate, and disseminate relevant information from such studies. For example, the original text of H.R. 3906 (the [Innovative Stormwater Infrastructure Act of 2018](#)) proposed the establishment of “centers of excellence” for innovative stormwater infrastructure. Although this proposal was dropped from subsequent versions of the bill, workshop participants found this idea compelling. More broadly, workshop participants emphasized the need for a focused national conversation about stormwater-related research needs and priorities.

3.2.3 Evaluate Whether Lack of 40 CFR Part 136 Approval Presents a Barrier to Implementing New Technologies for Water Quality Sampling and Analysis

New technologies for measuring water quality have proliferated, with an increasing trend toward continuous, real-time sensors. In addition, new “bio” technologies (e.g., genetically engineered bacteria that fluoresce when they contact metals) are being developed to detect the presence of certain constituents. Approved sampling and analysis methods at 40 CFR 136 do not necessarily include these new methods, which workshop participants identified as a potential barrier to their use. The need to validate new technologies was identified as hindering both technology commercialization and the ability of MS4 program managers to confidently move forward with using new technology.

As an action item, workshop participants suggested inventorying currently used non-CFR-approved technologies and known instances where programs have elected not to use a new monitoring technology because it is not an approved method. Where possible, it would be helpful to identify avenues to address impediments to those technologies’ use—rule changes, use of existing procedures to approve new technologies on a case-by-case basis, or other creative uses of the technologies.

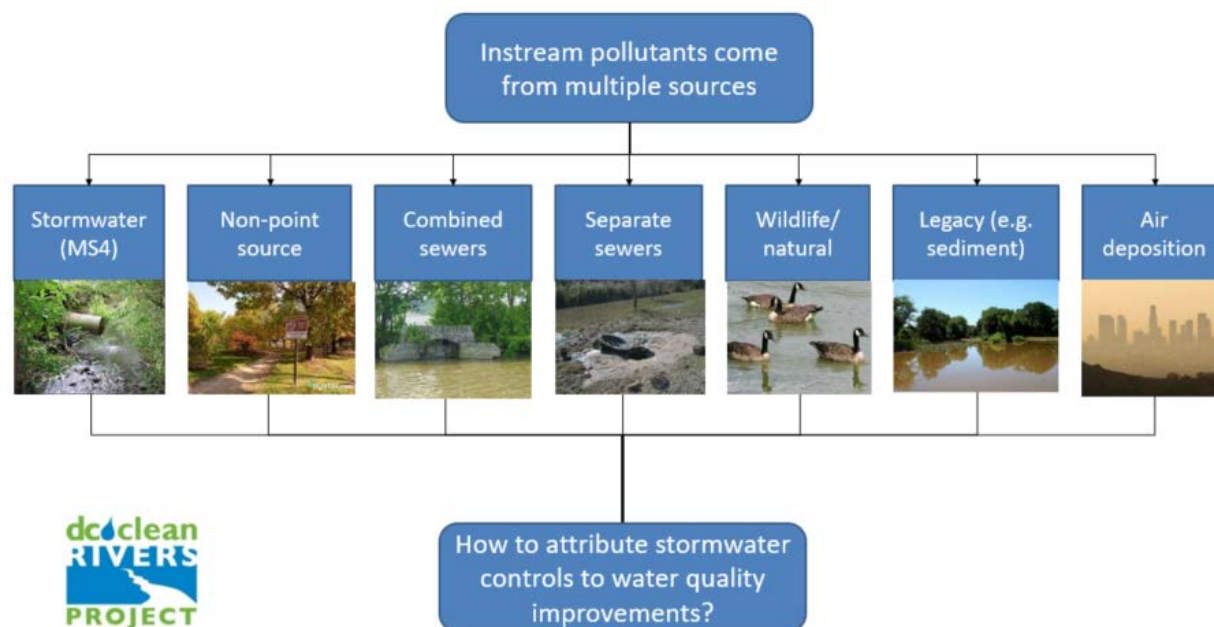
The [Southern California Stormwater Monitoring Coalition](#) has used alternative non-CFR-approved methods to offer cheaper and faster sampling techniques. For example, they have used genetic analysis technologies for (1) rapid fecal bacteria measurement, (2) pathogens measurement, and (3) measuring algae in streams.

Representatives from environmental organizations at the workshop explained that they often employ new technologies that are not approved by 40 CFR Part 136, as they are not restricted to permit-approved methods for their research. These organizations may belong to a sector that may be more willing to test new approaches, then share them with the broader stormwater management community.

Additional discussion about envisioning uses for sensors and other new technologies is included in Section 3.3.2 below.

3.3 Making Outfall and Receiving Water Monitoring More Discriminating to Inform Program Management

Municipal stormwater programs are unique among sources under the NPDES program because there are often many discharge points from a storm sewer system and relatively little direct treatment before discharge. A wide variety of external factors—many beyond the control of the permittee, as shown in Figure 5’s example below—contribute pollutants to receiving waters, not just stormwater runoff. As well, MS4s vary substantially in size, complexity, and management challenges. A point source such as a wastewater treatment plant operates in a much more controlled environment with a more obvious approach for pollution reduction, monitoring, and attributing permittee actions to water quality responses.



Graphic: DC Water

Figure 5. Various sources of pollutants may contribute to receiving water quality, making it difficult to determine the contribution from stormwater.

Traditionally, stormwater program managers have relied on assumptions about the performance of their program activities and BMPs in gauging their overall program effectiveness. An increased focus on water quality goals and TMDL pollutant reduction requirements has brought an increased emphasis on measuring the performance of BMPs and measuring the effectiveness of municipal stormwater programs overall. Across the country, many local programs are performing some degree of outfall, receiving water, and BMP-level monitoring to determine pollutant levels and demonstrate reduction trends (either in response to a permit requirement or on their own). Tailoring this monitoring/evaluation by making it as robust and discriminating as possible will help dischargers prioritize programmatic approaches to reduce pollution as well as inform planning for and siting of physical BMPs.

Increasing targeted data collection alone, of course, will not automatically lead to improved program effectiveness. One hundred percent of survey respondents agreed that monitoring must go beyond data collection to include data management and analysis that links the acquired information to specific performance metrics. Workshop participants indicated a need for guidance in designing monitoring programs to yield actionable results and for assistance in linking monitoring data to programmatic decision-making. Some participants also expressed a desire to expand the use of real-time monitoring for stormwater operations and supported deploying pilot programs and special projects for innovative monitoring technologies coming to market.

California’s Phase II MS4 General Permit requires the development and implementation of a **Program Effectiveness Assessment and Improvement Plan (PEAIP)**. A critical component of this is generating and analyzing useful data (e.g., through monitoring) to inform program improvements. In an effort to promote a uniform and effective approach for PEAIP development and implementation, CASQA has developed a [PEAIP Framework](#) for Phase II permittees. The framework emphasizes the need to identify and prioritize POCs and determine where they have the most impact. Outfall and receiving water monitoring, coupled with smart data analysis, play a key role in achieving this, as well as in identifying options for POC reduction.

3.3.1 Evaluate Appropriate Scale for Monitoring Efforts to Yield Actionable Results

Workshop participants described the importance of scale in monitoring efforts. By first identifying specific management problems or questions, programs can ensure that monitoring approaches use the appropriate geographical range and time scales to address them. For example, should a monitoring effort be done at a large scale (to supply a broad regional/watershed and longer-term perspective) or a smaller scale (for studying specific areas) and shorter time steps (to assess pollutant contributions and the effectiveness of specific mitigation approaches)?

Defining proper scales for monitoring also depends on the purpose of the monitoring. As discussed above, program effectiveness can appropriately be assessed at a broader scale, while BMP effectiveness can best be evaluated at a smaller scale at representative site locations.

In pursuing monitoring efforts that incorporate multiple jurisdictional scales (e.g., region, watershed, state), each program should share data with the surrounding communities. State agencies, EPA, and/or national organizations should facilitate local data sharing by creating and maintaining mechanisms to more widely share these data. When program functions are shared through partial consolidation at watershed or regional scales, there may be opportunities for more effectively aligning monitoring, tracking, evaluating, and reporting activities.

However, there can also be hurdles in extracting and comparing data for large-scale monitoring efforts that comprise several jurisdictions. Therefore, local MS4 programs should ask themselves several questions before embarking. For example:

- Are there opportunities for resource savings over the long term?
- Can incentives be offered for integrating new jurisdictions into existing monitoring programs?
- Can we design representative monitoring that will provide discriminating results that can be used by multiple jurisdictions?
- Can sampling, analysis, and data management and interpretation be standardized to allow for inter-comparability?
- Do collected data help to answer established management questions for each participating jurisdiction?

DC Water (Washington, D.C.) embarked on intensive pre- and post- monitoring activities for two green infrastructure installations in a small area to demonstrate performance and planned water quality improvements. The utility worked at a relatively small scale within the managed sewersheds to be able to detect signals of change in the receiving water. The \$1 million cost (about 2 percent of the overall project budget) was funded through the utility's impervious surface charge. A dedicated team oversaw sensor installations and ensured that equipment stayed in the system over several years.

These are just some of the considerations to address when weighing the pros and cons of increasing the scale of a monitoring effort. Even when no formal partnering is established, workshop participants suggested, monitoring and annual reporting requirements should be structured to provide an opportunity for inter-comparability, information sharing, and technology transfer within the state, region, or country.

Monitoring and evaluation efforts over a larger geographic area tend to be less discriminating (i.e., capable of detecting cause-effect relationships). In the pre-workshop survey, 92 percent of respondents agreed that targeting implementation and monitoring in smaller areas increases likelihood of demonstrating links between implementation activities and water quality responses.

In southern California, local stormwater programs have installed storm drain diversions in some locations to improve water quality at the state's beaches ([Clean Beach Initiative](#)). To demonstrate effectiveness, monitoring was performed at a scale to assess statistical changes in pre- and post-project mean densities of the pollutants in certain geographic areas.

One workshop participant noted that, in their state, there is a lot of monitoring data for small drainage areas that can show water quality improvement or degradation; however, the quality trends are not evident for larger drainage areas, due to the obscuring effects of other inputs (e.g., agriculture) on a larger scale. Several participants specifically suggested that permits allow for small-scale implementation and assessment to better validate effectiveness. To help illustrate the importance

of more targeted monitoring, workshop participants identified several small-scale efforts (e.g., DC Water's green infrastructure monitoring) that have produced tangible results linking program efforts to water quality improvement. Participants thought successful small-scale efforts should be identified and included in guidance, case studies, or other means to inform future efforts and provide lessons learned.

3.3.2 Convene a Visioning Session for Deploying Sensors in MS4 Programs

During workshop discussions, participants discussed the use of new sensor technologies (e.g., pollutants, flow, real-time, or near real-time) within the municipal stormwater program. Several participants were working on projects with real-time controls in storm sewer systems to actively control whether runoff is directed to a groundwater infiltration basin to augment supplies or discharged to receiving waters. These systems use sensors and telemetry to measure flows, water quality, and volume of available storage in different parts of the system and make decisions accordingly. Some voiced concern about whether it was viable to use these types of technologies for compliance determinations, given the lack of 40 CFR 136 approval and the volume of data that would be produced. Others put forth some ideas of how new sensor technologies could enable enhanced operation of a municipal stormwater program for early identification of illicit discharges and flooding, or even real-time decisions to direct stormwater flow to groundwater recharge basins when conditions allow.

Workshop participants suggested convening a visioning session focused on the identification, acceptance, and deployment of sensors in municipal stormwater programs. Visioning topics should include the use of sensors for improving system operations (e.g., illicit discharge detection, pipe clogging, flooding) as well as for designing and implementing real-time control programs to better manage water resources. These topics align well with existing and ongoing work being done through EPA's Office of Water on water technology and innovation (e.g., "Intelligent Water"). The visioning sessions should acknowledge the challenges discussed above and present a range of remedies.

The **Southern California Coastal Water Research Project** has used **conductivity sensors** in tandem with flow sensors to dictate when to sample in estuaries. These devices have been helpful because the two-way tidal flows during storm events make it hard to know when you are sampling runoff versus estuarine receiving water.

In south **Orange County**, permittees are using **remote water quality and flow sensors** at outfalls to develop a better understanding of water balance in urbanized catchments. The water quality sensors can be configured to send out automatic notifications when thresholds for parameters such as turbidity are exceeded, making it possible to begin responses to potential illicit discharges as they are occurring. The combined real-time flow and water quality data are informing the implementation of strategies to address unnatural water balance.

Workshop participants acknowledged a need for more impactful studies surrounding innovative technology, particularly for sensors and real-time controls. Further, there is a need for broader dissemination of information on current technologies and best practices available for water quality monitoring. The visioning session could be used to identify further opportunities for special projects for permit inclusion to pilot innovative technologies to improve water management and enhance decision-making.

WRF's **Leaders in Innovation Forum for Technology (LIFT)** is a multi-pronged initiative to help bring new water technology to the field quickly and efficiently. **"Intelligent Water Systems"** has been selected as one of its key focus areas. Subscribers can participate in regular discussion forums and presentations on the topic, access technology evaluations, and review the latest research.

3.4 Improving Our Ability to Quantify Effectiveness—Approaches to Link Water Quality Outcomes to Actions

Since MS4 program inception, many regulators have largely taken a "best intentions" approach in assessing program effectiveness related to water quality improvements: if the components of a permit are implemented adequately, they assume it will lead to improved water quality. But there is little or no assembled data to firmly support such conclusions. To date, very few programs have gone so far as to analyze and document the actual effectiveness of their programmatic measures and physical BMPs at removing pollution from stormwater runoff.



Photo: EPA

Some permittees have established sophisticated monitoring and modeling to better quantify the effectiveness of their stormwater programs; however, for the majority, a realistic and effective way to reveal the specific link between actions and water quality improvements has been elusive. This can be due to many factors. For example, watersheds and drainage areas may be quite large, with many small sub-drainage areas where stormwater is managed, either through targeted programmatic practices or physical BMP treatment. This can create the need for many upstream and downstream monitoring locations to accurately determine the effectiveness of implemented actions. Beyond the logistical hurdles a permittee may face, a widespread monitoring effort would likely be cost-prohibitive for the average permittee. There is often a significant lag between implementation of controls and discernable water quality benefits. This may occur in part because of the slow pace of BMP implementation in many watersheds and in part because wet weather-related water quality responses are often highly variable and difficult to detect. Further, stormwater pollution sources are often dynamic (constantly changing) and vary widely.

"There is a resounding need to develop and convey better analytical methods for drawing linkages between implementation activities and water quality effects and outcomes (both prospective and after the fact). This can likely be accomplished through modeling and non-modeling methods to make more reliable connections."

—Comment from a workshop participant

Workshop participants agreed that MS4 programs should move away from the best intentions approach and focus on improving capabilities for determining and quantifying the actual effectiveness of specific actions in improving water quality. They acknowledged that useful data may exist that have not yet been tapped for this purpose (e.g., turbidity and sediment loss data for

construction sites, data collected for rulemaking purposes). Likewise, potentially transferable approaches have been deployed in other programs, such as for combined sewer overflows. Workshop participants communicated the need for better tools, guidance, and methods for accurately quantifying BMP performance and integrating information about BMP effectiveness across larger geographical scales.

Participants agreed that a crucial first step is improving tracking of BMP implementation, maintenance, and condition. Without a thorough understanding of where BMPs have been implemented (and whether they have been enacted properly) and a system for ensuring that they receive timely maintenance, MS4 managers will likely be unable to evaluate BMP effectiveness at site-specific or system-wide scales. Attendees discussed the need to expand use of asset management systems to provide the management and tracking framework necessary to properly account for and maintain stormwater BMPs (see EPA, 2017a).

3.4.1 Document the Current State of Knowledge of BMP Performance and Effectiveness

Workshop participants were divided in their assessment of the current state of knowledge on BMP performance and effectiveness. Some thought there was a robust cache of data available, while others saw a clear need for more and better information. It was generally agreed that available BMP effectiveness information is limited for certain pollutants (e.g., polychlorinated biphenyl [PCBs], mercury). Participants highlighted the need to better account for and distinguish the effectiveness of BMPs for different pollutants in different implementation settings, considering factors such as watershed characteristics, land use types, and BMP condition. There was also broad acknowledgement of the need for improvement in interpreting and disseminating the results of unique and beneficial datasets on BMP performance and effectiveness to promote better knowledge transfer.

During the previous workshop, participants stated that performance of treatment and source control BMPs³ needs to be better measured and reported for existing approaches as well as new technologies as they come to market. The resultant report acknowledged that available data and information are particularly limited concerning effectiveness of source control BMPs such as public education, illicit discharge controls, and facility inspections. These source control elements are important building blocks of the traditional MS4 programs.

Some publicly accessible resources do have documented examples of BMP performance data. For example, the [International Stormwater BMP Database](#) includes over 600 datasets, publications, and tools related to stormwater BMP effectiveness. The database is well positioned to host and disseminate documented test results and studies from many of the leading

Some cities have done excellent work to evaluate and document BMP effectiveness. For example, **Portland, Oregon's stormwater program** has conducted detailed performance evaluations of stormwater management facilities in the city. Portland's detailed evaluation accounted for differences in practice design, placement, and performance, which helped in future practice siting and design to optimize effectiveness (see, for example, City of Portland, 2006).

³ In the stormwater program, there is often overlap and ambiguity in the terms used to describe practices to control the volume and/or quality of stormwater runoff (e.g., post-construction BMPs, permanent stormwater controls, structural BMPs, non-structural BMPs, treatment controls, source controls, MCMs). For simplicity and consistency, this report uses "BMPs" to include these types of control measures in both gray and green infrastructure applications.

organizations addressing the topic of BMP effectiveness, such as WEF and its [National Stormwater Testing and Evaluation for Products and Practices \(STEPP\) Initiative](#), which is aimed at validating the performance of innovative stormwater management technologies. However, workshop participants noted that the International Stormwater BMP Database has limited capacity to store data and information in a way that enables evaluation of how BMP performance might vary in different implementation settings and for pollutants that were not the focus of initial testing. Other organizations like [CASQA](#) are working at the state or regional level to develop more locally focused tools to help quantify the water quality impact of stormwater program actions (e.g., calculating source-load reduction).

Workshop participants acknowledged that despite the currently available resources, there is still a need for more research and information sharing to improve the ability to quantify the effectiveness of stormwater program actions. Broadly inclusive databases can be a good starting point, but more data location-specific data (e.g., on geomorphology, hydrology, climate, O&M strategy, and the presence of unique or emerging pollutants) are needed. Ultimately, increasing the variety and robustness of data and information about different BMPs' performance and effectiveness is needed to build the capacity of local programs, public agencies, and private parties to implement the most appropriate methods for addressing specific pollutants under local conditions. Participants agreed that expanding our understanding of BMP effectiveness is not solely the responsibility of any one sector of the stormwater management community. It was agreed that permitting authorities, permittees, technology vendors, researchers, and trade organizations will need to cooperate in organizing research to more fully understand BMP effectiveness over time across a wide range of settings.

3.4.2 Improve the Applicability and Usefulness of Modeling Through Collecting and Incorporating Better Performance Data

It is very difficult to project long-term stormwater management needs, opportunities, and effectiveness at watershed or broader geographic scales. Modeling is—and will likely remain—a primary tool for long-term stormwater planning and project siting. Workshop participants acknowledged that models are increasingly being used to supplement water quality monitoring and provide flexibility to permittees when a widespread comprehensive monitoring program is infeasible. For example, several states have developed MS4 permitting frameworks that allow for [“reasonable assurance analysis” \(RAA\)](#) based on modeling to demonstrate permit compliance (EPA, 2017b). As this practice becomes more commonplace, there will be a need to improve models' ability to demonstrate water quality impacts from stormwater management activities.

Used properly, modeling can also greatly assist in the evaluation of stormwater program effectiveness and BMP performance at a wider landscape scale. Workshop participants expressed concern that the current limitations in effectiveness and performance data have led to low confidence in the ability of models to be useful across a wide variety of stormwater management settings (e.g., different regions, climates, hydrology, geomorphology). They emphasized the need to collect more and better effectiveness data for all BMPs to improve the usefulness of modeling, especially for source control BMPs (e.g., public education and outreach, illicit discharge detection and elimination, facility inspections).

Source control BMPs can be critical for reducing runoff pollution, but their effectiveness is often estimated roughly—or they are left out of stormwater models entirely because their effectiveness is

difficult to quantify and data are limited. Proactive and preventative pollutant source control methods such as illicit source detection and good housekeeping measures also tend to be underrepresented.

In stormwater modeling, the effectiveness of BMPs has traditionally been calculated based on runoff volume reduction (i.e., pollutants are reduced through decreasing the volume of runoff carrying those pollutants). Flow may be a suitable surrogate for certain pollutants (especially those that build up and wash off impervious surfaces over time) in place of BMP removal efficiency calculations. Participants indicated that a wide range of available models from simple to complex are available. EPA Region 9's guide on model-based analysis (EPA, 2017b) provides some information on choosing a model appropriate to a MS4 communities needs and capabilities. Workshop participants suggested that many communities will need further technical support in choosing and using models and, in some cases, in transitioning from simple models to more complex ones as their planning, assessment, and management needs change over time.

Ultimately, stormwater managers need useful models that inform decisions and quantify progress. This requires modeling tools that can represent all factors contributing to pollutant reduction and incorporate new information and adapt model outputs over time. To this end, there was an acknowledged need for guidance on how to effectively calibrate stormwater management models and link them with siting tools.

Models need proper calibration before they can be relied on as an alternative to widespread monitoring. Workshop participants had questions about how many locations or which activities need to be monitored to provide sufficient data for calibrating a useful model. What is the optimal density of monitoring to inform modeling; is it a cost-effective approach? Workshop participants from southern California indicated that they are moving toward relying more on models for predicting water quality impacts because they are responsible for hundreds of water bodies impaired by a wide variety of pollutants. While no model will ever be 100 percent accurate, models can become more useful through the use of high-quality data, representative of real-life conditions, to assist model calibration and validation.

Example EPA Stormwater Planning Models

EPA's [Storm Water Management Model](#) (SWMM) is a robust tool used worldwide to estimate the effects of stormwater runoff on collection systems and the environment. SWMM conducts hydraulic and hydrologic simulations and can estimate pollution reductions related to BMP implementation (EPA, 2016).

EPA's [National Stormwater Calculator](#) helps developers assess the impacts of runoff from the impervious surfaces on their projects. It also provides guidance and runoff reduction estimates that can help in a choice of low impact development controls (EPA, 2017c).

EPA's [System for Urban Stormwater Treatment and Analysis Integration](#) (SUSTAIN) uses SWMM to help develop, evaluate, and choose optimal BMP combinations at various watershed scales based on cost and effectiveness. Some are using SUSTAIN coupled with the [Hydrologic Simulation Program](#) (HSPF) and other watershed models to support long-term planning efforts and evaluate effectiveness.

3.4.3 Evaluate Methods to Account for True Source Controls in Models

Participants at both workshops acknowledged a need for better effectiveness data related to source controls and better methods for accounting for such data in stormwater modeling. "True source control" refers to actions that eliminate the actual pollution before it can be discharged (e.g., eliminating copper in brake pads, narrowing authorized pesticide uses, and banning use of plastic

bags). Since source control is preventative, not treatment-based, it is often difficult to accurately quantify the impact that total or partial removal of a specific source has on the quality of a water body. Typical stormwater management models only account for pollutant removal after a rainfall event (e.g., pollutants are already on the ground and are transported via runoff into conveyances and treatment control BMPs). True source controls remove pollutants from the environment before they have a chance to contact runoff. Several workshop participants expressed the belief that true source control is the most effective BMP and contributes greatly toward meeting regulatory goals like TMDL wasteload allocations. There was an acknowledged need to find better ways to represent these impacts in predictive models.

3.5 Improving Program Tracking and Reporting

Tracking and reporting are often discussed in tandem, yet it is important to differentiate between them. As part NPDES MS4 permit requirements, Phase I and many Phase II MS4 programs must report on their implementation actions (and, often, associated program effectiveness) every year, so they must perform tracking. Since the quality of a tracking program generally is not evaluated as part of the regulatory obligation, this time- and resource-intensive endeavor can amount to little more than a “bean-counting” exercise if not structured properly. Voluminous paper reporting is another common problem, especially in programs where NPDES permitting authorities cannot fully review annual reports.

Ninety-two percent of respondents agreed that *“Reporting requirements should move beyond passive activity and data tallies to incorporate active effectiveness evaluation and clear linkages to program action.”*

Workshop participants indicated that tracking and reporting should have a clear link to the required program activities to enable a true effectiveness assessment. The forthcoming NPDES E-Reporting Rule, which requires entities to electronically submit specific permit and compliance monitoring information instead of filing paper reports beginning in 2020, presents a key opportunity to re-envision how tracking and reporting can yield more useful and usable data. It should be noted that 88 percent of survey respondents agreed that e-reporting will not improve reporting quality unless more measurable and evaluative metrics are associated with program activities.

3.5.1 Identify an Approach for Using Established Performance Metrics to Guide Tracking and Reporting Efforts

Section 3.1.3 described the need to establish key performance metrics. The Phase II MS4 regulations introduce the concept of establishing “measurable goals” as a component of stormwater management programs to “evaluate the effectiveness of individual control measures and the storm water management program as a whole” (EPA, n.d.). EPA’s 2016 [MS4 General Permit Remand Rule](#) made this a federal requirement for Phase II MS4 permits by requiring that permit terms and conditions “be expressed in clear, specific, and measurable terms” (40 CFR 122.34[a]). EPA’s [Measurable Goals Guidance for Phase II MS4s](#) (EPA, n.d.) explains that local programs can write their measurable goals in various ways, which fall into five main categories:

1. Tracking implementation over time.
2. Measuring progress in implementing the BMP.
3. Tracking total numbers of BMPs implemented.

4. Tracking program/BMP effectiveness.
5. Tracking environmental improvement.

Some of these loosely align with the six CASQA outcome levels, with the highest outcome (or measurable goal category) related to improvement in receiving waters. However, measurable goals for most Phase II MS4 programs tend to be more focused on tracking activities or outputs rather than outcomes (categories 1 to 3). The programs then report on a myriad of activities in their annual reports, which can be cumbersome, time-consuming, and minimally informative about the programs' effectiveness.

A dynamic activity tracking, evaluation, and reporting system enables more coordinated program management and adjustment and clearer permit reporting. Focusing on program elements that are linked directly to quantifiable water quality outcomes (e.g., BMP maintenance) and reporting tools that provide transparent accounting of benefits and are field-verifiable will accelerate progress and provide useful information to decision-makers. Once a program determines what elements need to be monitored, it should seek out a more integrated information and data management system that synthesizes data geographically and supports real-time management decision-making. An increasing number of programs are beginning to adopt asset management approaches for integrating disparate data systems.⁴ One workshop participant noted that a more holistic asset management approach provides an appropriate framework for systematic performance tracking. This in turn can promote a better understanding of the correlation between activities and outcomes and generate actionable information on overall performance.

The [City of Salinas, California](#), started using an ESRI-based geospatial tool called **2NFORM** in 2017 to streamline its stormwater program tracking and evaluation process. Rather than spend months compiling hard copy inspection reports, public works staff can now enter data directly into a centralized database synced with information on hydrology and local geographic features. This rich, readily accessible data set is intended to enable better BMP performance assessment and overall decision-making.

Workshop participants stressed the importance of tracking locations, capacity, types, and performance (or maintenance status) of treatment control BMPs. Collectively, these serve as useful metrics for program progress and permit compliance on short time frames and can guide action prioritization. Another participant noted that collecting better data on the health of receiving waters is critical not only for program management but also for effective public outreach. Training and examples will be needed to help communities implement new methods and incorporating them in permits.

⁴ Asset management is a means to capture information on stormwater asset location, age, type, condition, maintenance history, and cost to help facilitate long-term planning and budgeting, staffing and workflow analyses, enhanced tracking and reporting, proactive maintenance, development of multi-benefit projects, and visual demonstration of progress with identified service levels. The report from the 2017 MS4 workshop included recommendations to (1) build capacity for asset management and (2) incentivize asset management.

3.5.2 Determine the Most Effective MS4 Program Reporting Mechanisms and Formats

Improving the functionality of reporting mechanisms will help streamline the process for program staff, making them more likely to fully engage in the effort. Workshop participants suggested that a national stormwater organization (e.g., WEF, NMSA) could survey states to identify the most effective reporting mechanisms currently in place. The results could then be used to inform the development of a web-based template for implementation under the new E-Reporting Rule. Baseline components would likely include data on receiving waters, outfall monitoring, and interim progress on milestones towards water quality requirements (e.g., wasteload allocation progress for TMDL compliance). Enabling the reporting of more and better data can in turn support the continued development of the local program.

During the workshop, a Phase I permittee representative described how one of their MS4 annual reports **filled 18 file boxes when printed**. Permittees and regulators alike acknowledged the immense effort often expended by permittees on annual reporting and a common lack of resources at regulatory agencies to fully review and interpret submitted materials.

Ultimately, this program information is shared in annual reports. These serve a specific regulatory purpose, but improving their usability would promote knowledge transfer across different programs. Workshop participants expressed support for a watershed approach that aggregates information from across the municipalities. Several workshop participants suggested developing a method for annual reporting that shows a permittee's answers to clear reporting questions and their "work" (or calculations/tracking information) demonstrating how they arrived at those answers; this could benefit multiple audiences such as regulators and other permittees attempting to address similar requirements. Participants described a few exemplary local examples that let regulators and the public alike dig into program information online. This would necessitate a platform for more robust tracking so that annual reports could be more digestible. Indeed, the need to declutter and slim down annual reports to the essential components was a common refrain.

Future reporting systems should be able to incorporate new information as permit requirements, opportunities, and technology shift over time while providing outputs that clearly communicate actionable information about program activities and effectiveness. Guidance and training on new reporting frameworks and how to incorporate them in permits will be needed to advance reporting approaches at the state and local levels.

4 OPPORTUNITIES AND NEXT STEPS

EPA Region 9, in partnership with the State of California and EPA Headquarters, convened the *Improving Stormwater Permit Approaches to Monitoring, Evaluation, Tracking, and Reporting* workshop to generate concepts for an overall better framework for stormwater program assessment and adaptation. Through facilitated dialogues, participants helped to identify more impactful, innovative approaches aimed at optimizing the use of scarce permitting and program implementation resources. Specifically, they highlighted opportunities to improve water quality outcomes through optimized design and implementation of monitoring and evaluation tools and tracking and reporting approaches.

Key findings from this workshop and the first workshop on improving overall approaches to stormwater permitting and program implementation will be broadly shared among EPA, state permitting agencies, local MS4 permitting agencies, permittee and research associations, and associated consultants and stakeholders.

Workshop participants recommended specific actions and strategies to address the issues and opportunities discussed at the workshop. The following table identifies these actions and strategies within relevant activity categories and identifies organizations that may be best suited to carry out these recommendations.

EPA anticipates working with these parties to conduct further program evaluations and identify specific actions for implementation. For example, EPA is currently developing an online training course on stormwater program finance methods, a key recommendation from the first workshop. Collectively, these recommendations provide a strong foundation for strengthening monitoring, evaluation, tracking, and reporting approaches to improve stormwater programs and permits and, ultimately, water quality.



Photo: EPA

Table 4. Recommended actions to improve program performance.

Strategy/Action	Key Organizations	
CAPACITY BUILDING AND PROGRAM SUPPORT		
<ul style="list-style-type: none"> • Clarify vision for future stormwater monitoring • Develop monitoring program improvement guide • Establish key activity and outcome-based performance metrics • Identify ways to leverage existing data 	<input type="checkbox"/> ACWA <input checked="" type="checkbox"/> Consultants <input checked="" type="checkbox"/> EPA <input checked="" type="checkbox"/> NMSA	<input checked="" type="checkbox"/> Permittee groups <input checked="" type="checkbox"/> States <input checked="" type="checkbox"/> Universities <input checked="" type="checkbox"/> WEF
PERMITTING STRATEGIES		
<ul style="list-style-type: none"> • Clarify permit requirements for monitoring, assessment, tracking, and reporting • Adjust permits to make special studies and focused monitoring more useful • Evaluate whether lack of 40 CFR 136 methods approval inhibits use of new technologies 	<input checked="" type="checkbox"/> ACWA <input type="checkbox"/> Consultants <input checked="" type="checkbox"/> EPA <input checked="" type="checkbox"/> NMSA	<input checked="" type="checkbox"/> Permittee groups <input checked="" type="checkbox"/> States <input checked="" type="checkbox"/> Universities <input checked="" type="checkbox"/> WEF
MAKING MONITORING MORE DISCRIMINATING		
<ul style="list-style-type: none"> • Evaluate appropriate scales for monitoring to yield actionable results • Explore opportunities for broader use of sensors in MS4 programs 	<input type="checkbox"/> ACWA <input checked="" type="checkbox"/> Consultants <input checked="" type="checkbox"/> EPA <input checked="" type="checkbox"/> NMSA	<input checked="" type="checkbox"/> Permittee groups <input checked="" type="checkbox"/> States <input checked="" type="checkbox"/> Universities <input checked="" type="checkbox"/> WEF
IMPROVING METHODS TO LINK WATER QUALITY OUTCOMES TO ACTIONS		
<ul style="list-style-type: none"> • Improve documentation of BMP effectiveness • Improve modeling performance data • Evaluate methods for accounting for true source control 	<input type="checkbox"/> ACWA <input checked="" type="checkbox"/> Consultants <input checked="" type="checkbox"/> EPA <input type="checkbox"/> NMSA	<input checked="" type="checkbox"/> Permittee groups <input checked="" type="checkbox"/> States <input checked="" type="checkbox"/> Universities <input checked="" type="checkbox"/> WEF
IMPROVE PROGRAM TRACKING AND REPORTING		
<ul style="list-style-type: none"> • Identify methods to use performance metrics to guide tracking and reporting • Determine more effective MS4 program reporting mechanisms and formats 	<input type="checkbox"/> ACWA <input checked="" type="checkbox"/> Consultants <input checked="" type="checkbox"/> EPA <input checked="" type="checkbox"/> NMSA	<input checked="" type="checkbox"/> Permittee groups <input checked="" type="checkbox"/> States <input type="checkbox"/> Universities <input checked="" type="checkbox"/> WEF

REFERENCES

- Barco, J., Wong, K. M., & Stenstrom, M. K. (2008). Automatic calibration of the U.S. EPA SWMM model for a large urban catchment. *Journal of Hydraulic Engineering*, 134(4), 466–474.
- CASQA (California Stormwater Quality Association). (2015). *A strategic approach to planning for and assessing the effectiveness of stormwater programs*. Retrieved from URL: <https://www.casqa.org/resources/stormwater-effectiveness-assessment/guidance-document>
- CASWRCB (California State Water Resources Control Board). (2010). *Guidance for assessing the effectiveness of municipal storm water programs and permits*. Retrieved from URL: https://www.waterboards.ca.gov/water_issues/programs/stormwater/docs/effctve_assmnt.pdf
- City of Portland. (2006). *2006 stormwater management facility monitoring report: Summary*. Retrieved from URL: <https://www.portlandoregon.gov/bes/article/148928>
- CWP (Center for Watershed Protection). (2008). *Monitoring to demonstrate environmental results: Guidance to develop local stormwater monitoring studies using six example study designs*. Retrieved from URL: https://dep.wv.gov/WWE/Programs/stormwater/MS4/guidance/Documents/Monitoring_to_demonstrate_environmental_results2008.pdf
- EPA (U.S. Environmental Protection Agency). (2018). *Evolution of stormwater permitting and program implementation approaches*. Retrieved from URL: http://nationalstormwateralliance.org/wp-content/uploads/2018/05/Evolution-of-Stormwater-Permitting-Approaches-and-Program-Implementation_Final-Report_5-17-18.pdf
- EPA. (2017a). *Asset management programs for stormwater and wastewater systems: Overcoming barriers to development and implementation*. Retrieved from URL: <https://www3.epa.gov/region9/water/npdes/asset-mgmt/pdf/Overcoming-Barriers-to-Development-and-Implementation-of-Asset-Management-Plans.pdf>
- EPA. (2017b). *Developing reasonable assurance: A guide to performing model-based analysis to support municipal stormwater program planning*. <https://www3.epa.gov/region9/water/npdes/pdf/stormwater/meeting-2016-09/dev-reasonable-assur-guide-model-base-analys-munic-stormw-prog-plan-2017-02.pdf>.
- EPA. (2017c). *National Stormwater Calculator (SWC): A desktop tool that helps users control runoff to promote the natural movement of water*. (EPA Publication No. 600-F-13-095d). Retrieved from URL: <https://nepis.epa.gov/Adobe/PDF/P100HD4I.pdf>
- EPA (2016). *Storm Water Management Model (SWMM): An application that helps predict the quantity and quality of runoff in future long-term runoff events within urban areas*. (EPA Publication No. 600-F-16-246). Retrieved from URL: https://www.epa.gov/sites/production/files/2016-09/documents/swmm_factsheet_final_16sep01-508_compliant.pdf
- EPA. (2010a). *MS4 permit improvement guide*. (EPA Publication No. 833-R-10-001).
- EPA. (2010b). *NDPES permit writers' manual*. (EPA Publication No. 833-K-10-001).
- EPA. (2008). *Evaluating the effectiveness of municipal stormwater programs*. (EPA Publication No. 833-F-07-010). Retrieved from URL: https://www3.epa.gov/npdes/pubs/region3_factsheet_swmp.pdf

- EPA. (2007). *MS4 program evaluation guidance*. (EPA Publication No. 833-R-07-003).
- EPA. (n.d.). *Measurable goals guidance for Phase II MS4s*. Retrieved from URL: <https://www.epa.gov/npdes/developing-ms4-resources>
- Fiorino, D. J. (2006). *The new environmental regulation*. Cambridge, MA: MIT Press.
- NPDES (National Pollutant Discharge Elimination System) Municipal Separate Storm Sewer System General Permit Remand Rule, 40 CFR 122 (2016). Volume 81, No. 237.
- NPDES—Regulations for Revision of the Water Pollution Control Program Addressing Storm Water Discharges, 40 CFR 9, 122, 123, & 124 (1999). Volume 64, No. 235.
- SMC (Southern California Stormwater Monitoring Coalition). (n.d.). *Home*. Retrieved from URL: <http://socalsmc.org/>
- WEF. (2015). *Rainfall to results: The future of stormwater*. Retrieved from URL: <http://wefstormwaterinstitute.org/rainfall-to-results/>

APPENDIX A: WORKSHOP ATTENDEES

Name	Organization	Location
Karen Ashby	Larry Walker Associates	Davis, CA
Nicole Beck	2 nd Nature	Santa Cruz, CA
Bethany Bezak	DC Water	Washington, D.C.
Ellen Blake	EPA Region 9	San Francisco, CA
Sean Bothwell	California Coastkeeper Alliance	San Francisco, CA
Eugene Bromley	EPA Region 9	San Francisco, CA
Geoff Brosseau	California Stormwater Quality Association	Menlo Park, CA
Seth Brown	Water Environment Federation; Storm and Stream	Alexandria, VA
Steve Carter	Paradigm H2O	San Diego, CA
Matt Fabry	San Mateo County	Redwood City, CA
Wes Ganter	PG Environmental	Golden, CO
Chad Helmle	Tetra Tech	San Diego, CA
Bobby Jacobsen	PG Environmental	Golden, CO
Peter Kozelka	EPA Region 9	San Francisco, CA
Keith Lichten	San Francisco Bay Regional Water Quality Control Board	Oakland, CA
Chris Minton	Larry Walker Associates	Seattle, WA
Thomas Mumley	San Francisco Bay Regional Water Quality Control Board	Oakland, CA
Randy Neprash	National Municipal Stormwater Alliance; Minnesota Cities Stormwater Coalition; Stantec, Inc.	St. Paul, MN
Nell Green Nysten	University of California, Berkeley	Berkeley, CA
Matt O'Malley	Coastkeeper	San Diego, CA
Elizabeth Ottinger	EPA Region 3	Philadelphia, PA
Gayleen Perreira	California State Water Resources Control Board	Sacramento, CA
Renee Purdy	Los Angeles Regional Water Quality Control Board	Los Angeles, CA
Dominic Rocques	Central Coast Regional Water Quality Control Board	San Luis Obispo, CA
Ken Schiff	Southern California Coastal Water Research Project	Costa Mesa, CA
Grant Sharp	Orange County	Orange County, CA
Dave Smith	EPA Region 9	San Francisco, CA
Chris Sommers	EOA, Inc.	San Francisco, CA
Michael Trapp	MBI	Carlsbad, CA
Suzanne Warner	EPA Region 1	Boston, MA
Richard Watson	RWA Planning	Mission Viejo, CA

APPENDIX B: WORKSHOP AGENDA

Overview

This workshop is the second of two planned meetings that will focus on the evolution of stormwater programs and permitting requirements. The first meeting (in December 2017) addressed minimum control measures, industrial/construction program requirements, and water quality-based control requirements. This second workshop will focus on municipal stormwater program monitoring, evaluation, tracking, and reporting provisions. We will evaluate experiences to date and opportunities to improve in how we:

- Establish Performance Metrics** that form the basis of tangible targets and goals for the program and program elements.
- Monitor stormwater**, with an eye toward strengthening the linkage between stormwater program actions and our ability to quantify change in stormwater and receiving water quality,
- Use other evaluation methods** (e.g., measuring surrogate measures, activity metrics, BMP implementation, etc.) with, or instead of, water quality measures,
- Track program implementation** and progress in meeting goals (both water quality and other types of program goals), and
- Report on program progress** and accomplishments to stakeholders and permitting authorities.

As we did in the December meeting, we will focus to a significant degree on how NPDES MS4 permits can be better structured or restructured to encourage/require more useful, cost-effective approaches and reduce or eliminate less effective methods and requirements. Workshop feedback will be synthesized with other existing research to produce a white paper discussing opportunities to strengthen how MS4 permits and implementation programs address monitoring, tracking, evaluation, and reporting.

Structure

Throughout the workshop, participants will be encouraged to consider whether and how existing MS4 program requirements concerning monitoring, evaluation, tracking, and reporting add value and to identify ways to improve permit and program effectiveness. To enable these discussions, each session will follow the same general structure:

- Conversation starter.** A guest speaker will provide a 5-10-minute overview, outlining the current state of monitoring and assessment, summarizing evolution over time, or sharing a brief example case study. In some cases, more than one conversation starter may speak.
- Hypothesis review.** As we did for the prior meeting, we will conduct a pre-meeting survey of participants to test a series of hypotheses concerning the effectiveness of current monitoring, evaluation, tracking, and reporting approaches and permit requirements. We will summarize survey responses to help identify the degree of

agreement or disagreement concerning key lessons learned and improvement opportunities.

- **Discussion.** The facilitator will then lead in-depth group discussions. For each permit element, we will consider 3 basic questions:

1. How effective has these program tools/requirements been in improving water quality, telling the story about what program effectiveness, and achieving other program objectives?

2. How can implementation of monitoring, evaluation, tracking, and reporting be improved in the future?

3. How can permits be improved to facilitate desired changes in monitoring, tracking, evaluation, and reporting?

- **Findings/Recommendations.** Each session will be focused to solicit important findings and specific actions to strengthen and improve the corresponding MS4 program/permit element. The workshop will conclude with a recap in an effort to identify areas of agreement and disagreement and issues needing further evaluation before adjourning. The work we do at the workshop will inform preparation of a paper that will summarize our work and hopefully help guide future actions to help improve MS4 permits and programs.

Key Terms

It is imperative that participants understand and attempt to use a common set of terms. Some of these key terms include:

- **Program Assessment** – Using a combination of methods, an analysis of the overall effectiveness of the MS4 program.
- **Monitoring** – Water quality monitoring typically performed at end-of-pipe, in-stream, or in a receiving water.
- **Evaluation** – A determination if the program element, activity, or an individual BMP is meeting stated objectives and performance metrics.
- **Tracking** – Collecting and compiling information on program implementation.
- **Reporting** – Presenting collected information to (1) assist with compliance determinations, (2) demonstrate adherence with Performance metrics, or (3) disseminate information to stakeholders.
- **Activity** – An action taken by a permittee or a regulated entity within the permittees jurisdiction that may provide a water quality benefit.
- **BMP** – A specific structural or non-structural management practice that is known to provide a water quality benefit.
- **Performance Metric** – a qualitative or quantitative measure of an objective or goal.
 - **Activity-based** – A measure of output whose benefit to water quality cannot be clearly quantified.

- **BMP Performance-based** – Monitoring results for a particular BMP or set of BMPs; expressed as pollutant concentration, pollutant reduction, or flow reduction.
- **Water Quality-based** – Monitoring results as determined from samples collected at an outfall, in-stream, or within a receiving water.

Other key terms will be identified and defined during the course of the workshop.

Agenda

WEDNESDAY, MARCH 21, 2018

9:00-9:30 am	Welcome and Overview of Workshop Agenda
	<p>Tom Mumley, San Francisco Bay RWQCB and Wes Ganter, PG Environmental</p> <ul style="list-style-type: none"> □ Welcome □ Introductions □ Review of Workshop Purpose and Agenda
9:30-10:45 am	Session 1: Current Condition - Are the current Monitoring, Evaluation, Tracking and Reporting requirements effective?
	<p>Conversation Starters: Dave Smith (EPA Region 9) and Grant Sharp (Orange County) <i>The objective of this <u>retrospective session</u> is to hear positive perspectives on the usefulness of current monitoring, evaluation, tracking and reporting requirements and to identify elements that are working well.</i></p> <p>Discussion: <i>How effective has these program tools/requirements been in improving water quality, telling the story about what program effectiveness, and achieving other program objectives?</i></p>
10:45-11:00 am	Break
11:00-2:00 pm	Session 2: How Can We Better Use Performance Metrics To Facilitate Improved Monitoring, tracking, evaluation, and reporting?
	<p>Conversation Starters: Nicole Beck (2nd Nature) and Dominic Roques (Central Coast Regional Water Board)</p> <p>Discussion and Development of Findings and Recommendations</p> <ol style="list-style-type: none"> 1. <i>Is it feasible to develop Performance Metrics for the Program and program elements and will this be helpful in improving water quality, telling the story about what program effectiveness, and achieving other program objectives?</i> 2. <i>Does the proposed construct and use of Activity-based, BMP-Performance-based, and Water-quality based Performance Metrics make sense? If not, what other approaches should be considered?</i> 3. <i>How can permits be improved to facilitate desired changes?</i>

12:30-1:15 pm	Obtain Lunch + Special Attraction- WEF's Stormwater Testing and Evaluation for Products and Practices (STEPP) initiative (Seth Brown, WEF)
1:15-2:00 pm	Continuation of Session 2 -
2:00-2:30 pm	Break
2:30-4:15 pm	Session 3: How Can We Make Outfall and Receiving Water Monitoring More Useful?
<p>Conversation Starters: Ken Schiff (Southern California Coastal Water Research Project) and Chris Minton (Larry Walker & Associates)</p> <p>Discussion and Development of Findings and Recommendations:</p> <ol style="list-style-type: none"> <i>1. How effective has monitoring program tools/requirements been in improving water quality, telling the story about what program effectiveness, and achieving other program objectives?</i> <i>2. How can implementation of monitoring and evaluation be improved in the future?</i> <i>3. How can permits be improved to facilitate desired changes in monitoring and evaluation?</i> 	
4:15-4:45	Review of Day 1 and Initial Synthesis

THURSDAY, MARCH 22, 2018

8:30-8:45	Reset and Chart Day 2 Wes Ganter, PG Environmental
8:45-10:00	Session 4: Linking Activities To Expected Water Quality Outcomes
<p>Conversation Starter: Bethany Bezak (DC Water)</p> <p>Discussion and Development of Findings and Recommendations:</p> <ol style="list-style-type: none"> <i>1. How effective has these program tools/requirements been in improving water quality, telling the story about what program effectiveness, and achieving other program objectives?</i> <i>2. How can implementation of models and linked planning, monitoring, and data collection methods improve evaluation techniques in the future?</i> <i>3. How can permits be improved to facilitate desired changes in evaluation?</i> 	
10:00-10:15 am	Break

10:15-11:30 am	Session 5: How Can We Improve Program Performance Tracking?
Conversation Starter: Randy Neprash (NMSA)	
Discussion and Development of Findings and Recommendations:	
<ol style="list-style-type: none"> 1. <i>How effective have tracking tools/requirements been in improving water quality, telling the story about what program effectiveness, and achieving other program objectives?</i> 2. <i>How can implementation of tracking be improved in the future? Are asset management programs the desired solution?</i> 3. <i>How can permits be improved to facilitate desired changes in tracking?</i> 	
11:30-12:30 pm	Lunch: Special Attraction: Using Real Time Controls To Optimize Stormwater Management (Chad Helmle, Tetra Tech)
12:30-1:45 pm	Session 6: Reforming Reporting Approaches To Help Move Programs Forward and Give Permitting Authorities What They Need
Conversation Starter: Elizabeth Ottinger (EPA Region 3- Philadelphia)	
Discussion and Development of Findings and Recommendations:	
<ol style="list-style-type: none"> 1. <i>How can implementation of reporting be improved in the future?</i> 2. <i>How can permits be improved to facilitate desired changes in reporting?</i> 3. <i>Is there a model reporting format(s) that can be used as an example or template for programs and permits?</i> 	
1:45-2:15 pm	Break
2:15-4:00 pm	Session 7: Reflection, Synthesis, and Wrap Up
<ul style="list-style-type: none"> <input type="checkbox"/> Identify areas of agreement, disagreement, or warranting more exploration. <input type="checkbox"/> Review and fine tune findings and recommendations. <input type="checkbox"/> How do we build capacity to use improved methods and approaches? <input type="checkbox"/> How can we best bring about desirable change in permitting approaches (next steps)? 	
4:00-4:30pm	Meeting Evaluation and Closing

APPENDIX C: PRE-WORKSHOP QUESTIONNAIRE RESULTS

On the right side of each table, responses were summarized and shaded in cases where responses were particularly strong in one direction or the other, or very balanced. Please keep in mind this is not intended to be a statistically valid survey instrument. Thank you for your responses.

Key to Shading

- 80% or more agree or see improvement opportunity
- 70-79% agree or see improvement opportunity
- Even, <20% difference
- 70-79% disagree
- 80% or more disagree

1. Effectiveness evaluations, program tracking, and reporting - Assuming it is possible to improve and adjust these activities, how would you rate the potential for significant improvement (toward cost-effective environmental outcomes) for each element?

	Significant potential	Some potential	Little potential	No potential	No opinion or insufficient knowledge	TOTAL	Significant or Some Potential	Little or No Potential
Water Quality Monitoring (receiving water, outfall, within collection system, at project or practice scale)	19	5	0	0	0	24	100%	0%
Non-Water Quality Evaluation (activity evaluation, effectiveness evaluation)	15	6	2	0	1	24	88%	8%
Tracking (tracking discreet activities (e.g. inspections, street sweeping, BMP installation), active asset management planning and tracking)	12	12	0	0	0	24	100%	0%
Reporting (annual reporting to permit authorities, reporting to public or elected officials)	16	5	3	0	0	24	88%	13%

2. What are the key elements of program effectiveness? (responses copied directly from survey results; not edited for grammar or spelling)

- 1) Solid definition of performance metrics
- 2) Metrics that are linked to meaningful outcomes
- 3) Suite of activities that directly move those metrics in a measurable way

- We don't really know how effective our programs are, generally. At the end of the day, we should be measuring impacts on water quality, but that has not been a focus for most programs for both political and financial reasons. Until we start to consistently and comprehensively measure performance, we will have no idea of real progress (or lack of progress).
- Key Elements are:
 - Enhanced Awareness
 - Behavior Change
 - Estimating/Modeling Pollutant Reductions
 - MS4 Monitoring
 - Receiving Water Monitoring
- Clear articulation of the question wanting to answer, including time, space, and degree of change you're wanting to observe
- Clear and concise permit language that provides flexibility to meet water quality standards while requiring robust monitoring to demonstrate compliance.
- Improvements in water quality (both discharge quality and receiving water quality); reduction in pollutant load discharged (either through stormwater treatment or capture); elimination of non-stormwater discharges; elimination of waterbody impairments (and delisting from CWA section 303(d) list)
- Tracking progress of implementation efforts to improve water quality, including reporting of BMPs laid out in a plan (e.g., EWMP, WQIP, GI Plan).
- Clear and measurable performance metrics and the ability to gauge activities and actions versus those metrics; in the case of MS4 there has to be a tie to water quality improvement and/or protection - this is why we invest the time, money, and effort
- Effectiveness measurements that are:
 - primarily outcomes (as opposed to outputs)
 - appropriate for the specific BMP
 - measured as close as possible in time and space to the result of a BMP
 - expressed in a meaningful way (e.g., relative (%) as opposed to absolute)
 - as appropriate and possible, expressed in lay terms
- We need clear articulation of program requirements, clear methods for associating actions with expected or observed water responses, and clear accountability expectations to ensure the stormwater agency communicates results clearly to the public and the permitting authority.
- Objective, outcome-based performance metrics. Not just checkboxes of "miles of street swept."
- Engagement and expertise at the MS4 level, adequate funding and authority, good asset management
- Ability to show water quality improvement, behavior change, and an overall understanding of the benefits and challenges associated with urban stormwater
- Spatially-explicit, quantifiable information on pollutant loading-reducing structural BMPs and implementation activities
- Close relationship between measured metrics and expected outcomes

- Receiving water quality improvements are the ultimate goal
- The key element of program effectiveness to me is the ability to establish a relationship between the BMP/action/activity and a reduction in pollutant loads.
- Understanding current level of effort (including common definitions to ensure consistent understanding of those efforts)
Understanding desired outcomes and meaningful and measurable metrics
- What makes for an effective program?
Effective programs need continual streams of funding. To obtain funding, program managers need the ability to communicate actions and environmental return both pre- and post-spend in formats easy to understand. Money is spent in specific locations. Spatially-based asset management allows implementation optimization and simplifies tracking and reporting.

3. Are program assessment requirements outdated and ineffectual?

	Strongly Agree	Agree	Neither Agree nor Disagree	Disagree	Strongly Disagree	TOTAL	Strongly Agree or Agree	Strongly Disagree or Disagree
Permits have been relatively inflexible, resulting in retention of less effective monitoring requirements and difficulty in initiating more effective and innovative approaches.	9	13	0	2	0	24	92%	8%
Permits have failed to include clearly defined performance metrics that can be fulfilled through coherent monitoring and evaluation approaches.	9	12	3	0	0	24	88%	0%
Permit monitoring and evaluation requirements have failed to adequately consider program size, complexity, and pollutants of concern.	8	8	5	2	1	24	67%	13%
Stormwater quality monitoring has been largely ineffective in assisting compliance evaluation, problem targeting, and program improvement.	12	9	2	1	0	24	88%	4%
The stormwater quality monitoring problems are attributable to lack of experimental designs that have well defined objectives, minimize sampling error and constrain the hydrologic variability in stormwater quality.	7	7	8	1	1	24	58%	8%
Receiving water monitoring has been only moderately effective for trend analysis and assessing attainment of water quality standards.	5	10	7	2	0	24	63%	8%
Receiving water problems are attributable to the inherent variability in receiving water quality, lack of expertise and time in evaluating collected data, difficulty of associating changes in receiving water quality to watershed sources, and high monitoring costs.	10	7	3	1	3	24	71%	17%
Making linkages between BMPs and activities and water quality outcomes has been hampered due to stagnant monitoring designs and a lack of defined performance metrics.	8	10	3	2	1	24	75%	13%
Monitoring data management and analysis systems have not evolved sufficiently to enable effective evaluation and comparison of monitoring results.	8	8	5	2	1	24	67%	13%
Tracking and reporting frameworks have not been adequately tied to performance metrics which hamper assessment and reduce cost-effectiveness.	14	6	3	1	0	24	83%	4%
Tracking and reporting frameworks have yet to acknowledge or endorse asset management systems.	11	11	2	0	0	24	92%	0%

Improving Stormwater Program Monitoring, Evaluation, Tracking, and Reporting

Program and effectiveness evaluation should not be limited to permittees. The regulators (state and federal) should produce self-evaluations. These evaluations should include input from the full range of stakeholders (including permittees). The results of these evaluations should be made public for widespread distribution.	6	9	7	1	1	24	63%	8%
The programs for stormwater research have to change. Identifying, describing, and prioritizing research needs must be an open process that includes the full range of stakeholders (including permittees). The process should clearly define the research needs and publicize corresponding grant opportunities.	10	8	5	1	0	24	75%	4%
An improved process for technology transfer that translates and distributes research results useful for local implementers is needed.	13	9	1	0	1	24	92%	4%

4. Should we move toward a mix of Activity-based, BMP Performance-based, and Water Quality-based Performance Metrics, tailored to the local program design?

	Strongly Agree	Agree	Neither Agree nor Disagree	Disagree	Strongly Disagree	TOTAL	Strongly Agree or Agree	Strongly Disagree or Disagree
No one monitoring and evaluation method addresses all the assessment needs; multiple approaches tailored to local circumstances are needed.	14	8	1	1	0	24	92%	4%
If permittees adopt a consistent performance metric-based accounting system (spatial or otherwise), permits can increase emphasis on performance achievement and reduce emphasis on burdensome record keeping.	10	6	6	2	0	24	67%	8%
It is recognized that permittees or regulators cannot reliably assess program effectiveness at spatial and time scales relevant to management decision making based solely on measured water quality outcomes.	11	7	5	0	1	24	75%	4%
Program managers and regulators need to continually review and update management/compliance questions to reflect changes in water quality issues and evolution of program approaches to inform monitoring program adaptation.	8	9	5	2	0	24	71%	8%
Extensive training and outreach for permit writers, program staff and elected officials will be needed to enable local programs to take this approach.	12	6	5	1	0	24	75%	4%
Asset management systems provide the ability to define and track a wide array of activity-based metrics.	10	10	4	0	0	24	83%	0%

Improving Stormwater Program Monitoring, Evaluation, Tracking, and Reporting

Mobile enabled platforms are the most efficient way to facilitate and conduct field assessments and monitoring.	6	9	6	2	0	23	65%	9%
Metrics should enable evaluation not just of what was done, but also of whether those actions were effective.	16	7	1	0	0	24	96%	0%
Activity-based metrics should only be developed where BMP performance or water quality is difficult or impossible to measure.	4	5	2	9	4	24	38%	54%
Where programs have completed comprehensive plans identifying specific BMPs (e.g. through reasonable or other modeling), BMP Performance monitoring should be used to assess effectiveness.	6	14	1	2	1	24	83%	13%
BMP performance monitoring (water quality and/or volume reduction) should be used when stormwater assets are integrated with hydrologic tools to quantify impacts to receiving waters and cumulative BMP benefits.	6	12	4	2	0	24	75%	8%
Performance-based monitoring (water quality and volume reduction) can be used when BMPs are deployed in series to measure BMP effectiveness, assess maintenance needs, or to educate community stakeholders on program effectiveness.	5	13	6	0	0	24	75%	0%
Increased sampling of outfalls and locations within the collection system is needed to accurately target pollutant sources and evaluate BMP effectiveness within time scales of interest to permitting authorities and program managers.	7	8	4	3	2	24	63%	21%
Small systems may not need to perform water quality monitoring if alternative program evaluation and tracking approaches demonstrate effective BMP implementation and maintenance.	4	6	8	6	0	24	42%	25%
Performance metrics need to be established in concert with improved monitoring designs and methods (as more fully discussed in Session 3).	8	15	1	0	0	24	96%	0%
Focusing implementation actions and associated monitoring (and possibly even permits) in smaller watersheds or sewersheds improves capacity to evaluate implementation effectiveness and water quality responses.	8	10	6	0	0	24	75%	0%

5. How Can We Make Outfall and Receiving Water Monitoring More Useful?

	Strongly Agree	Agree	Neither Agree nor Disagree	Disagree	Strongly Disagree	TOTAL	Strongly Agree or Agree	Strongly Disagree or Disagree
Program managers and regulators need to continually review and update management/compliance questions to reflect changes in water quality issues and evolution of program approaches to inform monitoring program adaptation.	9	11	4	0	0	24	83%	0%
Water monitoring should continue but based on improved design and methods and tighter connection to performance metrics and program objectives.	13	8	2	0	1	24	88%	4%
Surrogate measures (e.g., fine sediment, flow) are a viable option for reducing analytical costs and increasing power for identifying spatial patterns and changes over time.	7	9	7	1	0	24	67%	4%
Instream monitoring requirements should be reduced in order to increase monitoring of outfalls, BMP effectiveness, and/or BMP assessments.	10	6	4	3	1	24	67%	17%
Water quality change detection will be enhanced with accounting of flow conditions coincident with sampling and guidance for how to use flow data to improve analysis	10	7	6	1	0	24	71%	4%
Monitoring designs must go beyond just data collection methods to include data management, data analysis, and reporting formats that clearly link data collected with Performance metrics.	13	11	0	0	0	24	100%	0%
New sampling methods (e.g. automated samplers) and designs can yield more reliable data to help answer management questions and assist real-time project and system management.	8	9	6	1	0	24	71%	4%
Permit language will need to be modified to authorize use of new methods and designs.	10	7	6	1	0	24	71%	4%
Training and outreach for permit writers, program staff, and elected officials on new methods and designs are needed to familiarize these groups with their benefits and limitations.	12	10	0	2	0	24	92%	8%

6. How can we better link activities to outcomes?

	Strongly Agree	Agree	Neither Agree nor Disagree	Disagree	Strongly Disagree	TOTAL	Strongly Agree or Agree	Strongly Disagree or Disagree
Targeting implementation and monitoring in smaller areas increases likelihood of demonstrating linkages between implementation activities and water quality responses.	10	12	1	1	0	24	92%	4%
Using predictive watershed and BMP siting models can provide the analytical framework necessary to relate activity/BMP implementation measures to expected water quality outcomes.	6	11	5	2	0	24	71%	8%
Where model-based approaches are used for linkage in planning, monitoring may need to focus more on collection of data to support model validation and sensitivity analysis.	14	8	2	0	0	24	92%	0%
Where robust models and associated implementation plans are in place, it may be appropriate to reduce and/or strategically focus annual water quality monitoring requirements.	10	10	2	1	1	24	83%	8%
More complicated linkage methods may be unnecessary for simpler Phase II permits or other permits that do not focus on specific water quality issues.	7	12	3	2	0	24	79%	8%
Outreach and training will be needed to build local capacity to implement these planning and linkage methods.	11	11	1	1	0	24	92%	4%

7. How can we improve program tracking performance?

	Strongly Agree	Agree	Neither Agree nor Disagree	Disagree	Strongly Disagree	TOTAL	Strongly Agree or Agree	Strongly Disagree or Disagree
Building an integrated activity tracking, evaluation, and reporting system enables more coordinated program management and adjustment, and clearer permit reporting.	13	8	2	1	0	24	88%	4%
Information/data management needs to improve to move past static compilation of activity measures to use of integrated information management systems that synthesize data geographically and support real-time management decision making.	16	5	3	0	0	24	88%	0%
Tracking locations, capacity, types, and performance (or maintenance status) of structural BMPs are a useful metric for determining program progress and permit compliance on short time frames, and this information can inform planning and prioritization.	14	7	3	0	0	24	88%	0%
Implementing more holistic asset management approaches provides appropriate framework for systematic performance tracking.	10	9	5	0	0	24	79%	0%
Training and examples will be needed to assist communities in implementing new methods and incorporating them in permits.	13	7	3	1	0	24	83%	4%

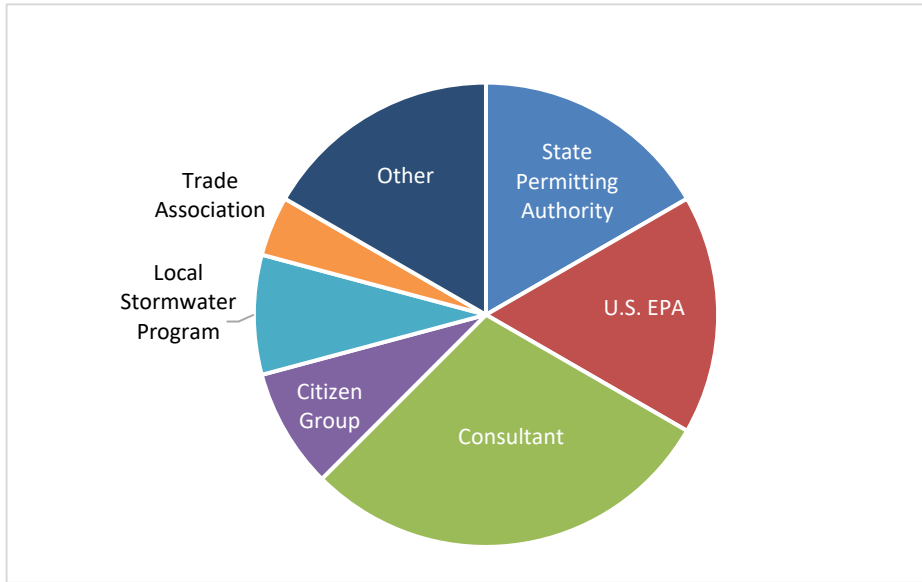
8. How can we reform reporting approaches to help move programs forward and give permitting authorities what they need?

	Strongly Agree	Agree	Neither Agree nor Disagree	Disagree	Strongly Disagree	TOTAL	Strongly Agree or Agree	Strongly Disagree or Disagree
Reporting requirements should move beyond passive activity and data tallies to incorporate active effectiveness evaluation and clear linkages to program actions.	15	7	1	1	0	24	92%	4%
Focusing more on program elements that are linked directly to quantifiable water quality outcomes (e.g. BMP maintenance), and reporting tools that provide transparent accounting of benefits and are field verifiable will accelerate progress and provide useful information to decision makers.	12	10	1	1	0	24	92%	4%
Future reporting systems should be able to incorporate new information as permit requirements, opportunities and technology shifts over time while providing outputs that clearly communicate program implementation/success.	13	8	2	1	0	24	88%	4%
Better guidance and training on new reporting frameworks and how to incorporate them in permits will be needed to advance reporting approaches at the state and local levels.	12	10	1	1	0	24	92%	4%
Electronic reporting will not improve reporting quality unless more measurable and evaluative metrics are associated with program activities.	10	11	3	0	0	24	88%	0%
Reporting requirements should be scaled based on program complexity; smaller programs need not report in as much detail as larger programs.	9	5	6	1	2	23	61%	13%

9. Do you have any additional comments or suggestions for the workshop? *(responses copied directly from survey results; not edited for grammar or spelling)*

- These questions are very thoughtful and should be plenty to start the discussion.
- There isn't one right answer for every program, but there must be a better monitoring/tracking/assessment framework that could be used to build more effective programs across the country.
- Effectiveness assessment is element-specific. No one measurement fits all. So, rather than specifying a measurement, specify a process to follow between the different elements to identify the appropriate measurement, etc. Process would be something like:
Inquiry (question, permit req, exceedance) → POC → BMP → Effectiveness measurement → Effectiveness methodology → Report
- Focus on solutions, and try to identify how and by whom recommended actions can be implemented.
- I wish similar workshops were conducted throughout the entire country for all levels of MS4 implementers (permittees, permit writers, regulators, inspectors, etc.). Perhaps that will be an outcome of this workshop (fingers crossed!).
- It's going to be awesome!
- Great job with the hypotheses - they are very thorough. I was energized just by reading through them.
- We should discuss the role and responsibilities of the regulators (EPA & states) as well as the permittees.

What type of organization do you represent (or is your employer)?



Answer Choices	Responses	
State Permitting Authority	4	17%
U.S. EPA	4	17%
Consultant	7	30%
Citizen Group	2	9%
Local Stormwater Program	2	9%
Trade Association	1	4%
Other	4	17%