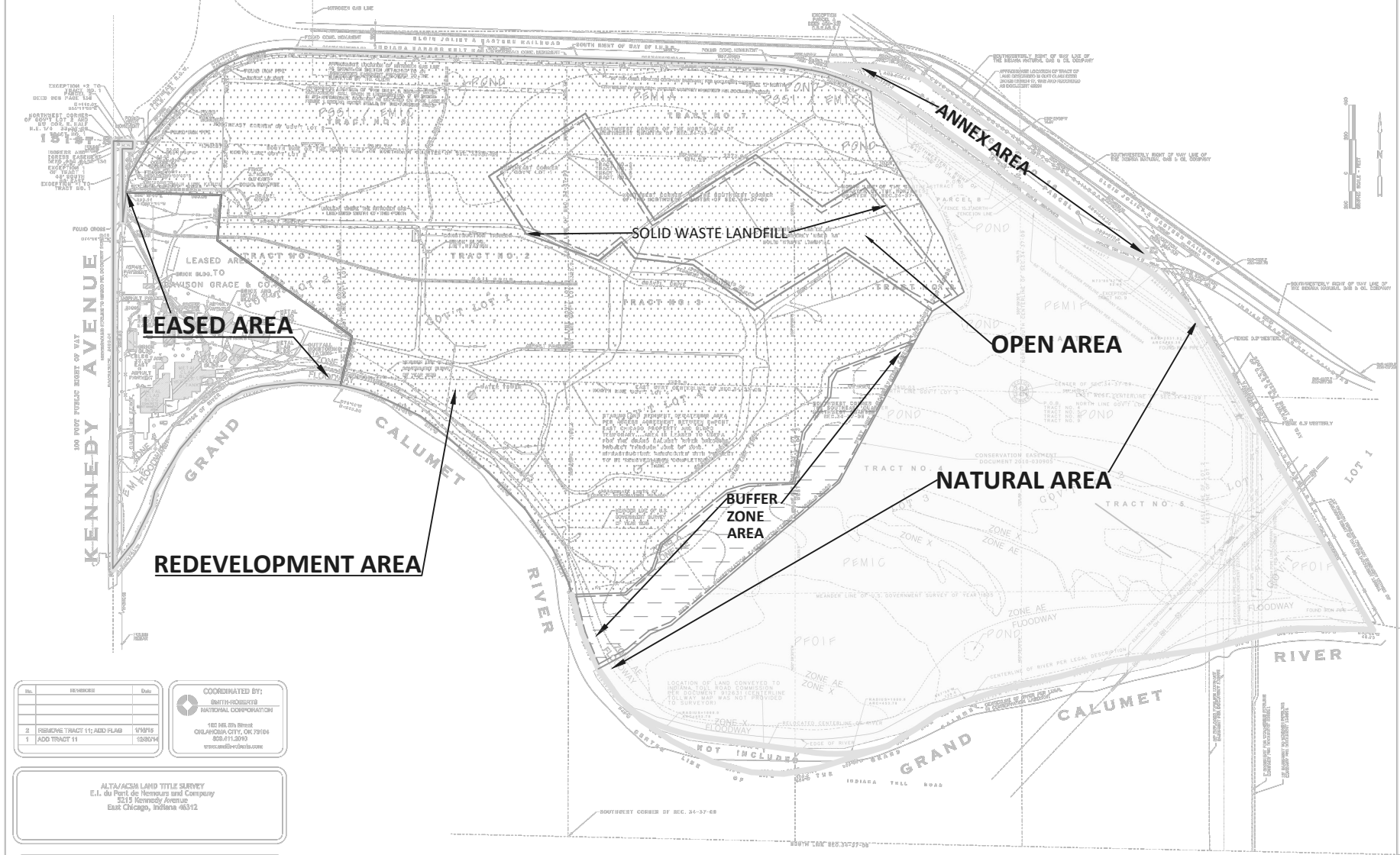


RCRA-05-2019-0003

Appendix A

Facility Map

ALTA/ACSM LAND TITLE SURVEY



REV.	REVISIONS	DATE
2	REVISION TRACT 11; ADD PLUMB	11/09/19
1	ADD TRACT #11	10/28/19

COORDINATED BY:
 NATIONAL CORPORATION
 180 N. 87th Street
 CHICAGO, IL 60648
 773.330.1300
 www.nac.com

ALTA/ACSM LAND TITLE SURVEY
 E.I. du Pont de Nemours and Company
 3215 Kennedy Avenue
 East Chicago, Indiana 46312

WMA JOB # 43642 LAKE CO., IND. 33-37-09

PROJECT #	SK	FACILITY MAP	DRAWN BY:	XY
	FIGURE #		A	East Chicago Gateway Partners
			DATE:	11/12/2018
			SCALE:	AS NOTED

NOTE: THE REDEVELOPMENT AREA, THE OPEN AREA, AND THE LEASED AREA ARE COLLECTIVELY THE WESTERN PORTION/INDUSTRIAL AREA.