

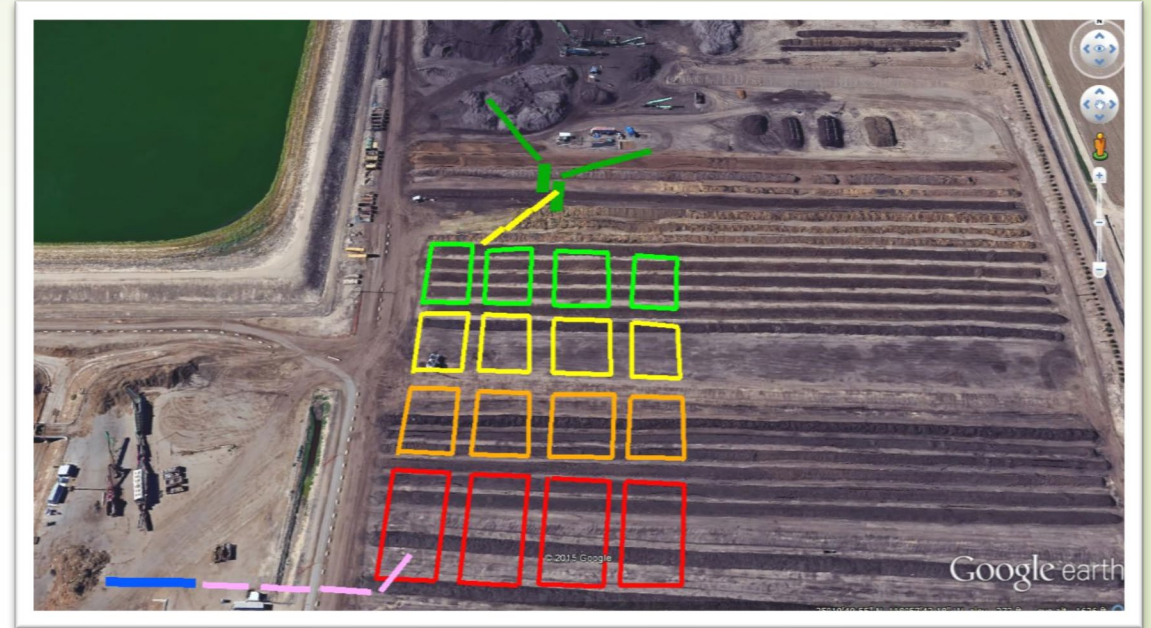


# Preparing for SB 1383 Organic Waste Recycling

Kevin Barnes - November 15, 2018 - California Bioresources Alliance

# Who Are We?

- Bakersfield, the 9<sup>th</sup> Largest City
- Nearly 100 Collection Routes
- Largest Public Composter in CA
- Countywide Organics Handler
- 20 Years of Food Waste Already
- Over 20,000 Tons/Year of Food Waste
- Leader in Low Emission, Automated Composting

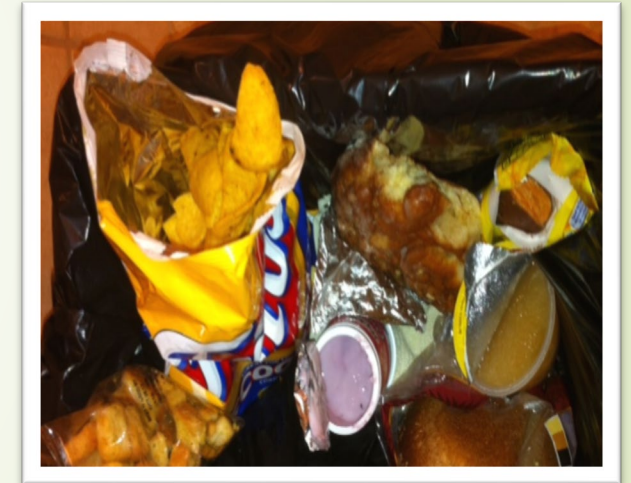
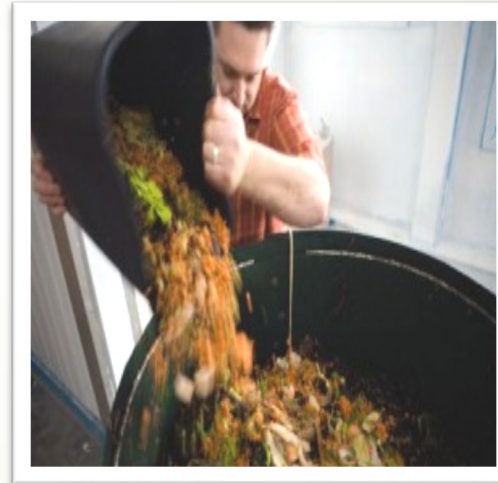


# Preparation for SB 1383 Regs, Thus Far...

- ▶ Having organic routes and facility established, no problem, right?
- ▶ Contrast draft regulations with long-standing system

- ▶ Identify two basic approaches:

- ▶ Intuitive “clean feedstock” style
- ▶ Effective “bag and wrapper” style



- ▶ Prevent “outlawing” of working systems
- ▶ Consider fuel burned per ton of collection – avoid diminishing returns



# Collaborative Efforts

- **Toward greater diversion...**
  - **Agreed to accept countywide stream**
  - **Working with restaurant regulators – “rescue first, then compost”**
  - **Plans to create patrons’ pressure on managers**
- **Toward wise use of resources...**
  - **Bagholders, unite! – Or face odors, vectors, washing, heavy lifting, and goo**
  - **Hauling association fuel analysis**

# Fuel Burned vs. Food Collected

	Round Trip Miles From Core Collection Route									
	1	2	3	4	5	6	7	8	9	10
<b>Lbs per Bin</b>										
1,500	0.5	1.1	1.6	2.1	2.7	3.2	3.7	4.3	4.8	5.3
1,400	0.6	1.1	1.7	2.3	2.9	3.4	4.0	4.6	5.1	5.7
1,300	0.6	1.2	1.8	2.5	3.1	3.7	4.3	4.9	5.5	6.2
1,200	0.7	1.3	2.0	2.7	3.3	4.0	4.7	5.3	6.0	6.7
1,100	0.7	1.5	2.2	2.9	3.6	4.4	5.1	5.8	6.5	7.3
1,000	0.8	1.6	2.4	3.2	4.0	4.8	5.6	6.4	7.2	8.0
900	0.9	1.8	2.7	3.6	4.4	5.3	6.2	7.1	8.0	8.9
800	1.0	2.0	3.0	4.0	5.0	6.0	7.0	8.0	9.0	10.0
700	1.1	2.3	3.4	4.6	5.7	6.9	8.0	9.1	10.3	11.4
600	1.3	2.7	4.0	5.3	6.7	8.0	9.3	10.7	12.0	13.3
500	1.6	3.2	4.8	6.4	8.0	9.6	11.2	12.8	14.4	16.0
400	2.0	4.0	6.0	8.0	10.0	12.0	14.0	16.0	18.0	20.0
300	2.7	5.3	8.0	10.7	13.3	16.0	18.7	21.3	24.0	26.7
200	4.0	8.0	12.0	16.0	20.0	24.0	28.0	32.0	36.0	40.0
100	8.0	16.0	24.0	32.0	40.0	48.0	56.0	64.0	72.0	80.0
50	16.0	32.0	48.0	64.0	80.0	96.0	112.0	128.0	144.0	160.0
<b>Incremental Gallons of Diesel Fuel Consumed per Ton Collected</b>										
NOTE: Diesel Collection Truck Mileage = 2.5 Miles per Gallon										



# Barriers to Success?

- ▶ Draft regs may do away with majority of current food diversion
- ▶ Extra policing of working systems would take up resources needed for system improvement
- ▶ Draft regs would:
  - ▶ Raise facility labor costs with excessive sampling
  - ▶ Lower incoming food waste tonnage if bags & wrappers not allowed
  - ▶ Ultimately reduce overall organics diversion



# How to Succeed?

- ▶ **Compost capacity glut in southern end of central valley**
- ▶ **Sales depend on distance, which drives cost**
- ▶ **Oversupply will drive local prices down, and competition up**
- ▶ **Competition will spur continued system improvement, when farmers can choose cleaner compost at dirt cheap prices**
- ▶ **To succeed, keep getting better!**