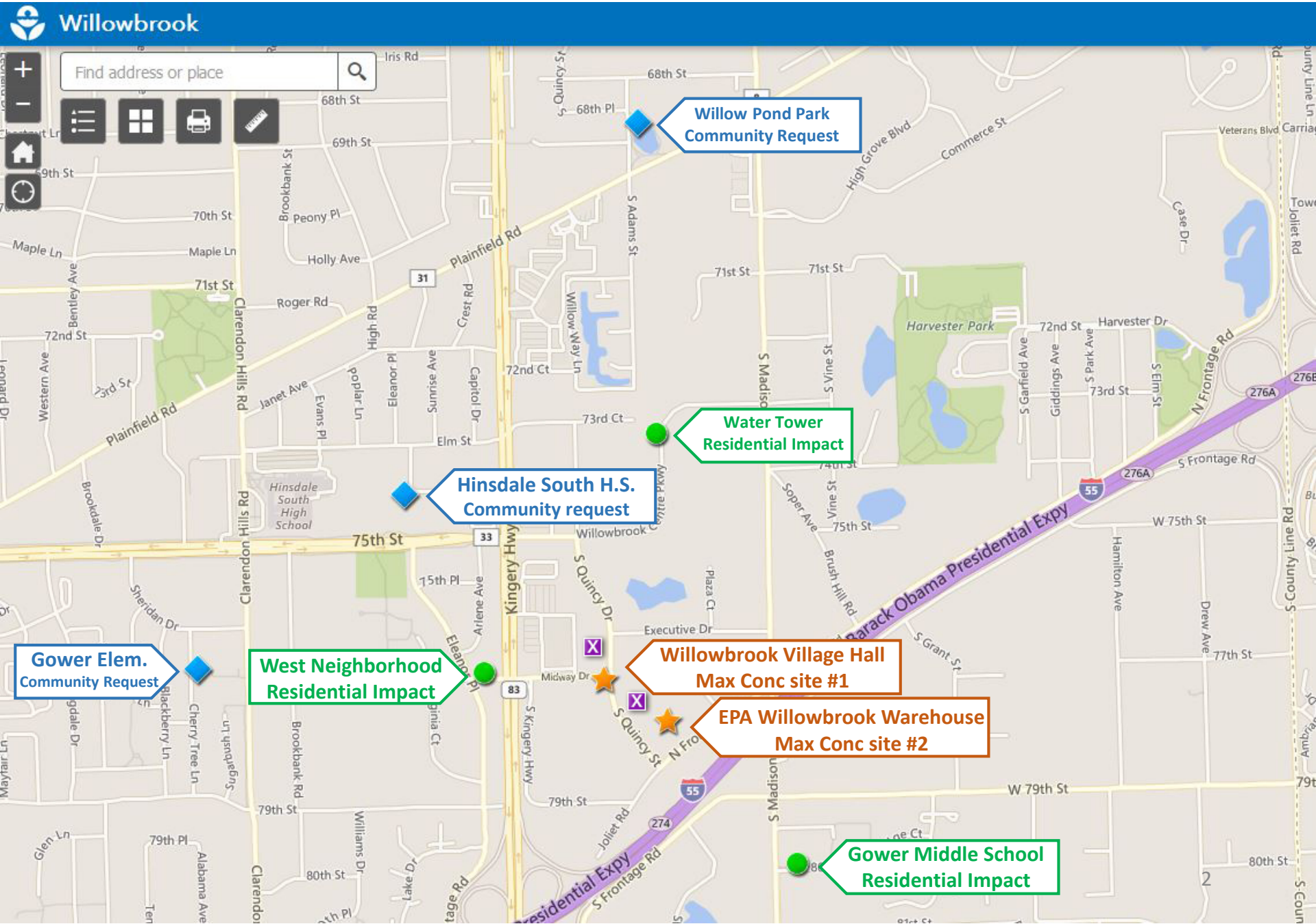


Update on EPA Ethylene Oxide Monitoring Data

Willowbrook, IL

Thursday, March 21, 2019

Willow Brook EtO Monitoring Network



2018/2019 3-Day EtO Sampling Through February 2019

| November | | | | | | |
|----------|-----|-----|-----|-----|-----|-----|
| Sun | Mon | Tue | Wed | Thu | Fri | Sat |
| | | | | | | |
| | | | | 1 | 2 | 3 |
| 4 | 5 | 6 | 7 | 8 | 9 | 10 |
| 11 | 12 | TB | 14 | 15 | 16 | 17 |
| 18 | 19 | 20 | 21 | 22 | 23 | 24 |
| 25 | 26 | 27 | TB | 29 | 30 | |

| December | | | | | | |
|----------|-----|-----|-----|-----|-----|-----|
| Sun | Mon | Tue | Wed | Thu | Fri | Sat |
| | | | | | | 1 |
| 2 | 3 | 4 | 5 | TB | 7 | 8 |
| 9 | 10 | 11 | 12 | TB | 14 | 15 |
| 16 | 17 | 18 | 19 | 20 | 21 | 22 |
| 23 | 24 | 25 | 26 | 27 | 28 | 29 |
| 30 | 31 | | | | | |

| January | | | | | | |
|---------|-----|-----|-----|-----|-----|-----|
| Sun | Mon | Tue | Wed | Thu | Fri | Sat |
| | | | | | | |
| | | 1 | 2 | 3 | 4 | 5 |
| 6 | 7 | 8 | 9 | 10 | 11 | 12 |
| 13 | 14 | TB | 16 | 17 | 18 | 19 |
| 20 | 21 | 22 | 23 | 24 | 25 | 26 |
| 27 | 28 | 29 | 30 | 31 | | |

| February | | | | | | |
|----------|-----|-----|-----|-----|-----|-----|
| Sun | Mon | Tue | Wed | Thu | Fri | Sat |
| | | | | | | |
| | | | | | TB | 2 |
| 3 | 4 | 5 | 6 | 7 | 8 | 9 |
| 10 | 11 | 12 | 13 | TB | 15 | 16 |
| 17 | 18 | 19 | 20 | 21 | 22 | 23 |
| 24 | 25 | TB | 27 | 28 | | |

Standard Sample Collection

TB Trip Blank Collection

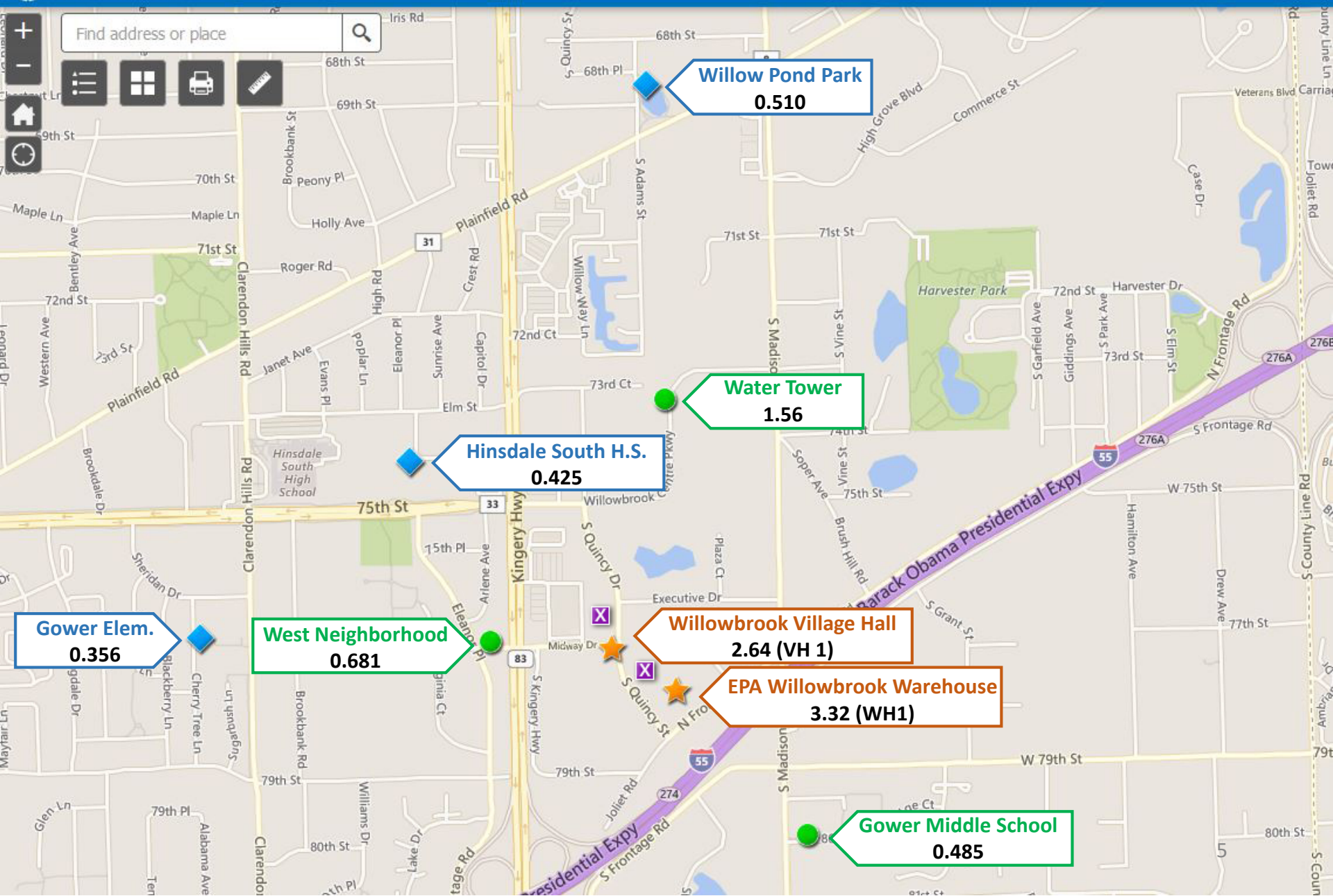
EtO Concentrations

February 14 – 26, 2019

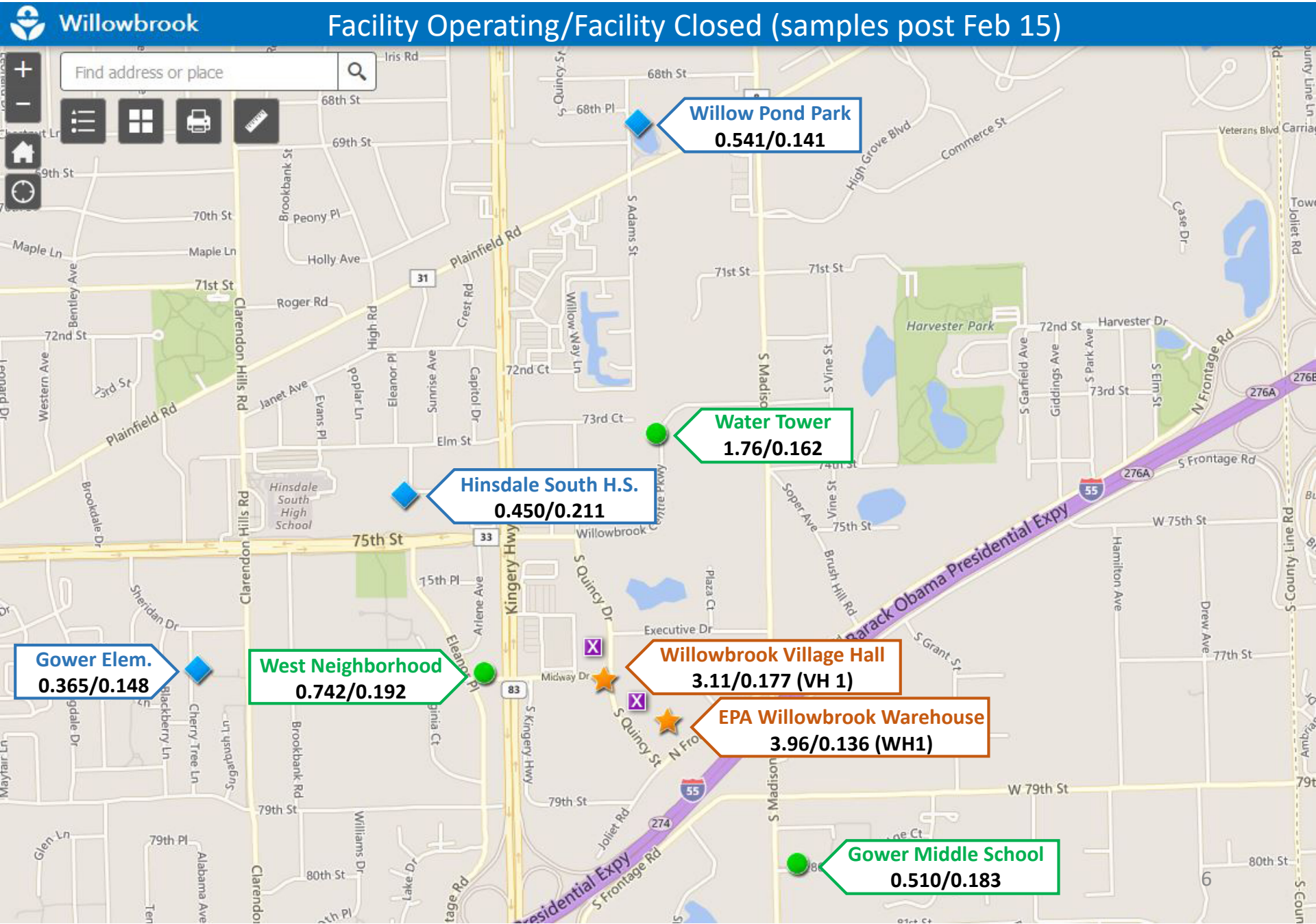
Average EtO Concentrations ($\mu\text{g}/\text{m}^3$) – November 13 to February 26, 2019

 Willowbrook

Entire Data Set



Average EtO Concentrations ($\mu\text{g}/\text{m}^3$) – November 13 to February 26, 2019



Willowbrook

Facility Operating/Facility Closed (samples post Feb 15)

Willow Pond Park
0.541/0.141

Water Tower
1.76/0.162

Hinsdale South H.S.
0.450/0.211

Gower Elem.
0.365/0.148

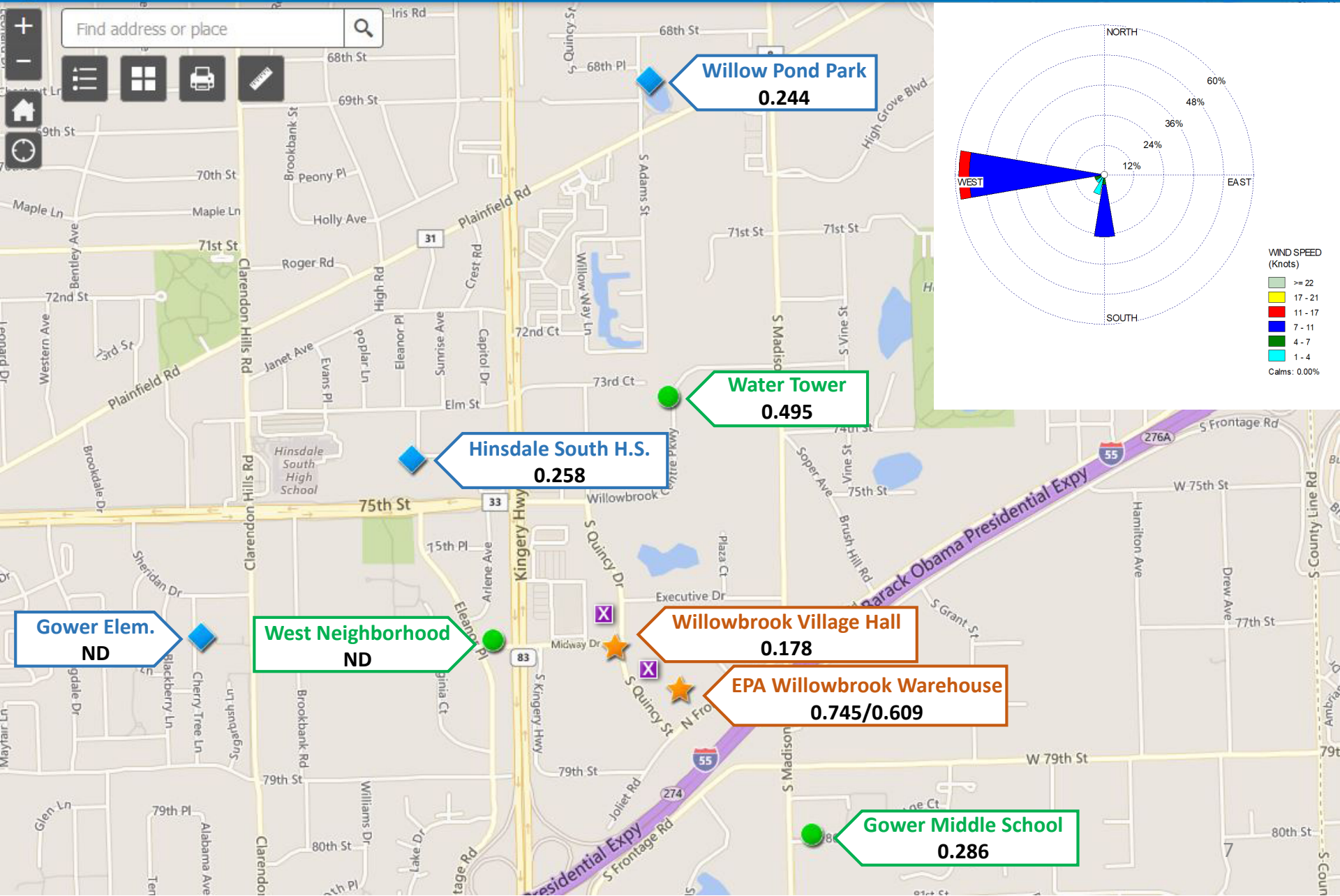
West Neighborhood
0.742/0.192

Willowbrook Village Hall
3.11/0.177 (VH 1)

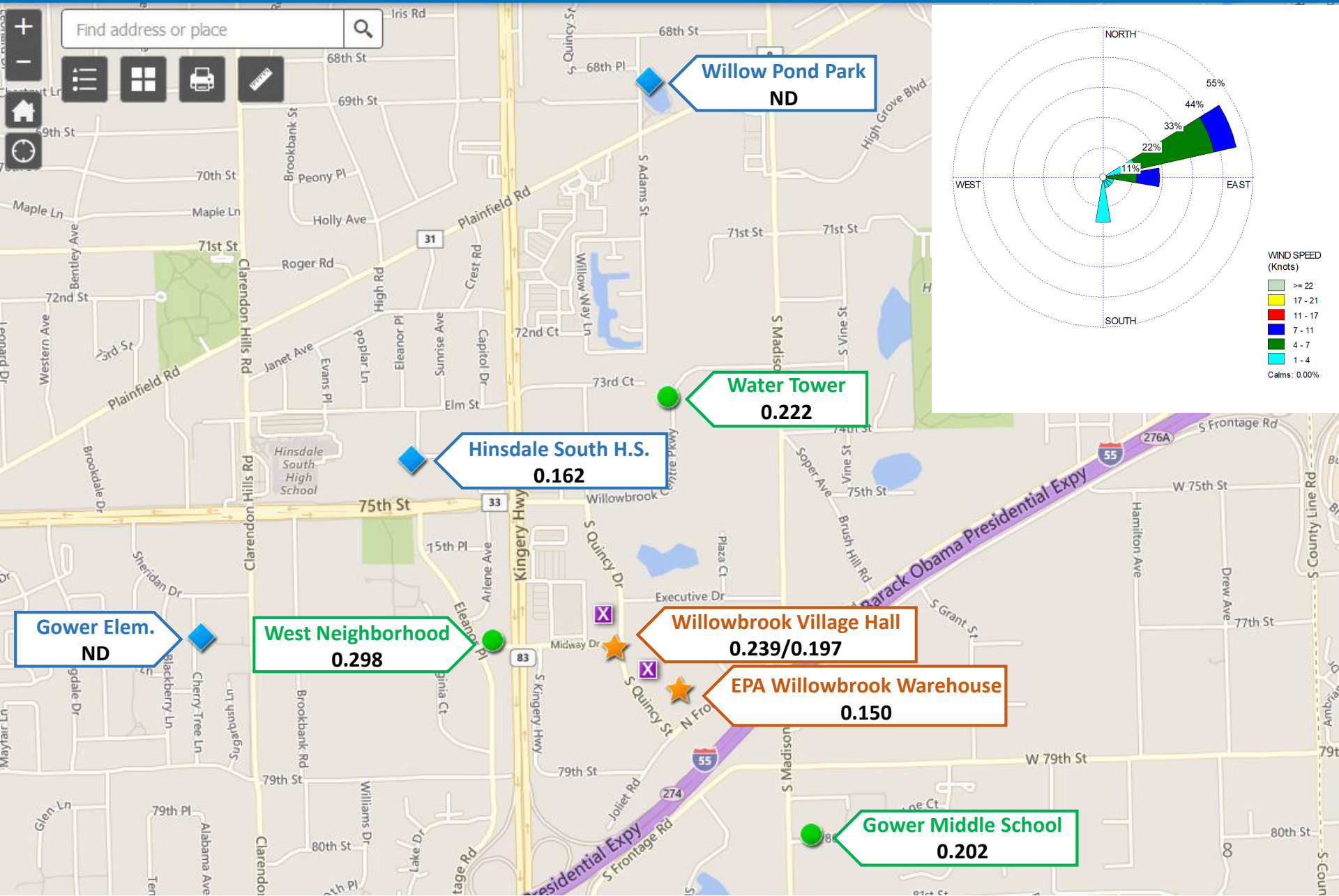
EPA Willowbrook Warehouse
3.96/0.136 (WH1)

Gower Middle School
0.510/0.183

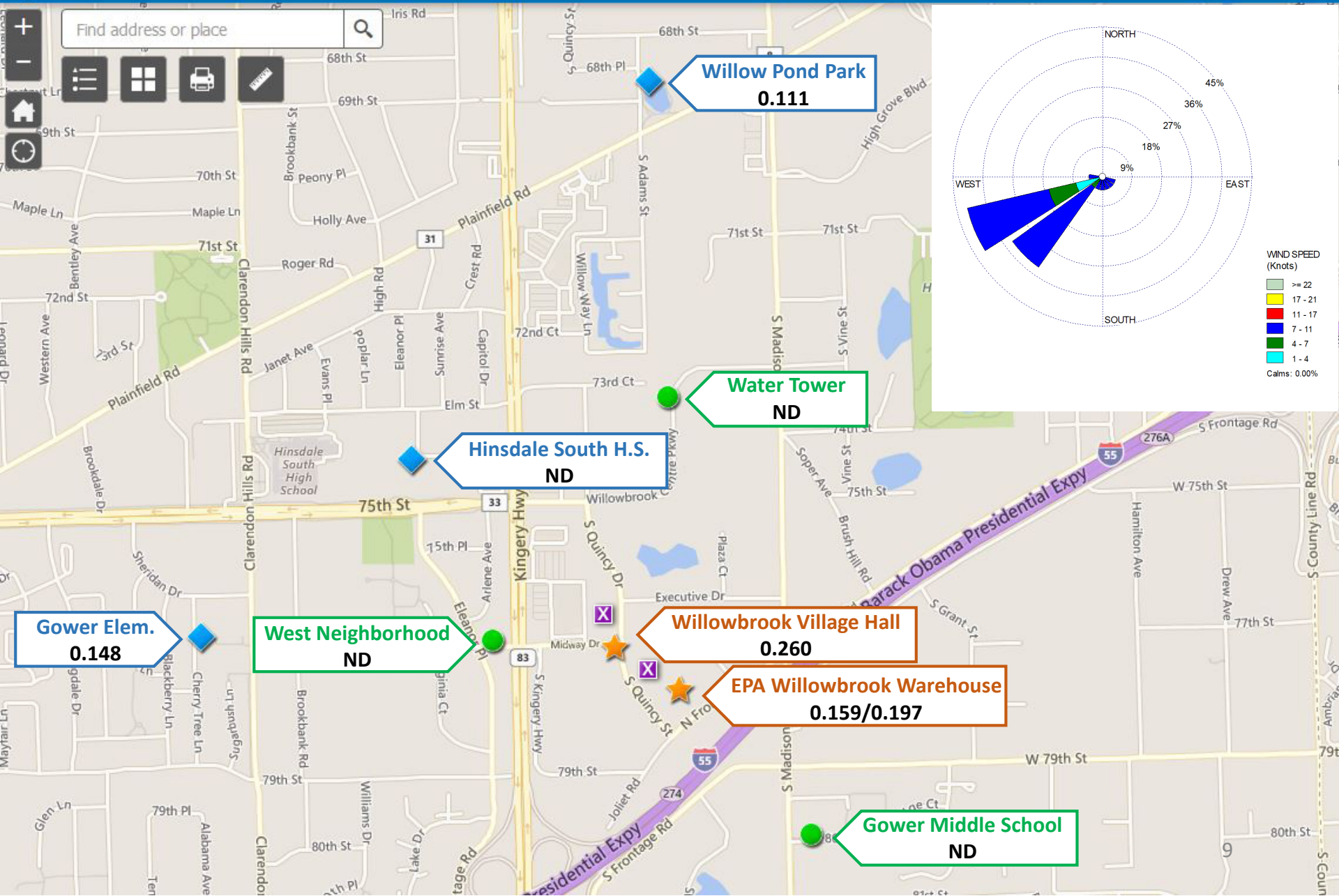
February 14, 2019 – 24-hour average EtO Concentrations ($\mu\text{g}/\text{m}^3$)



February 19, 2019 – 24-hour average EtO Concentrations ($\mu\text{g}/\text{m}^3$)



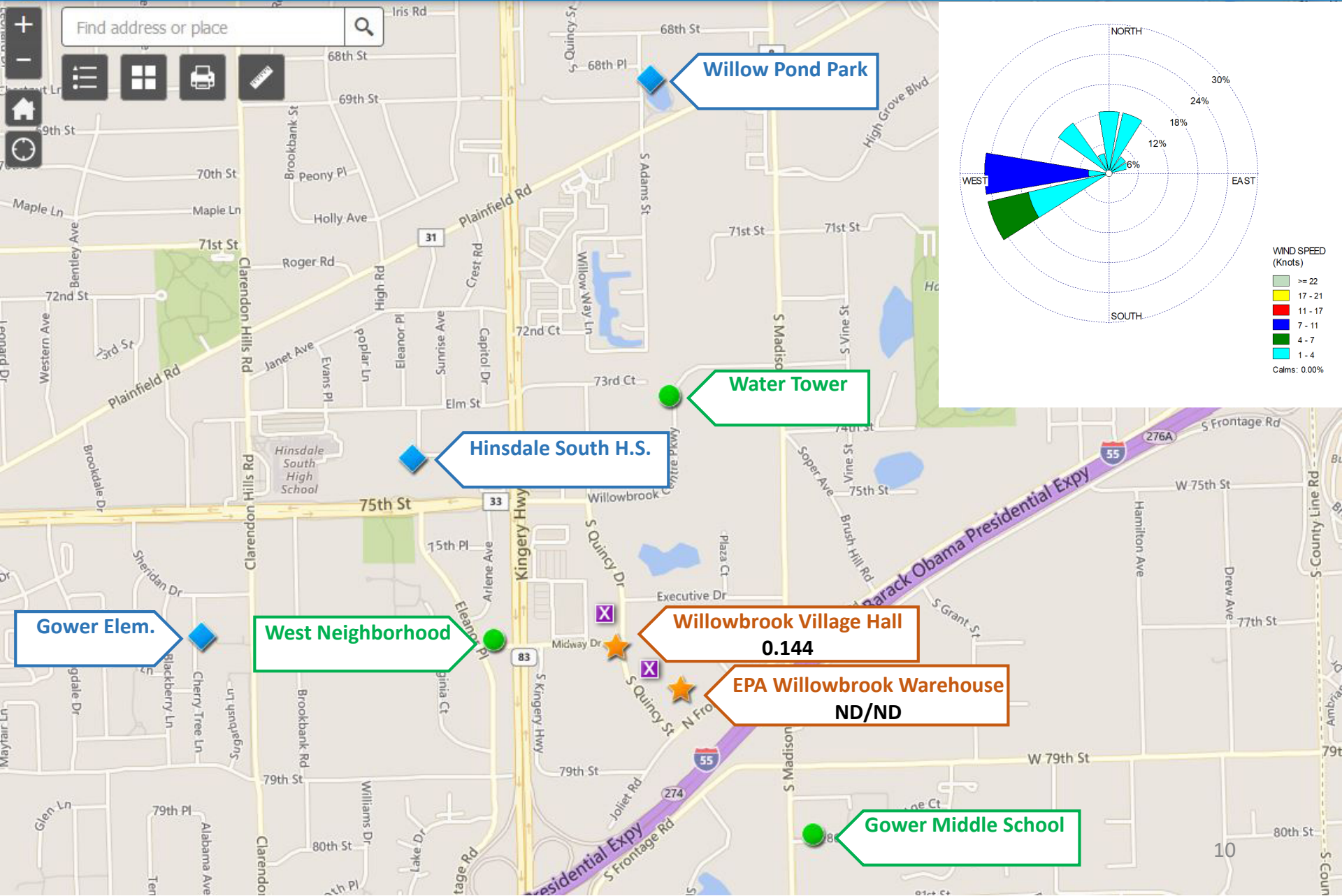
February 20, 2019 – 24-hour average EtO Concentrations ($\mu\text{g}/\text{m}^3$)



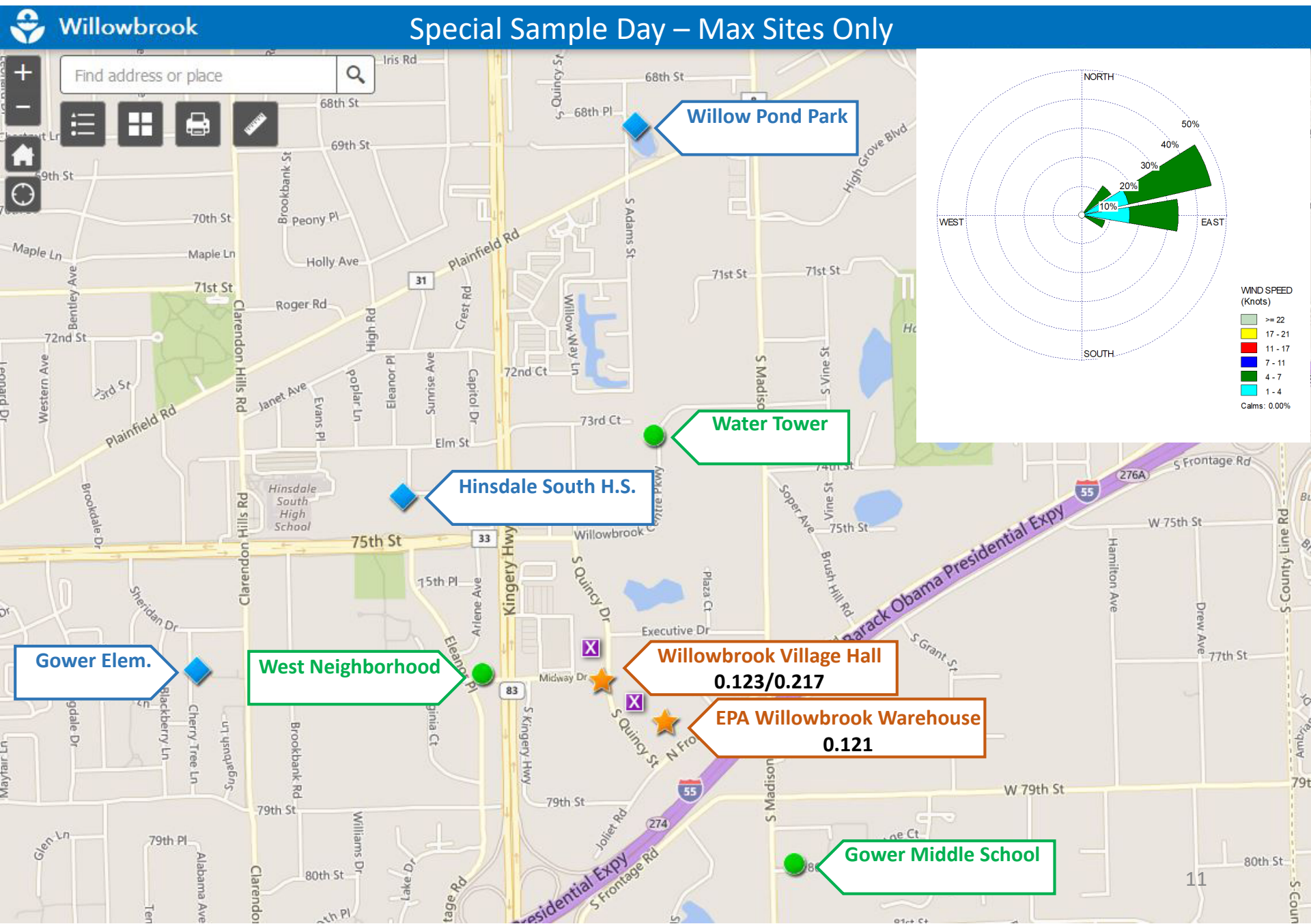
February 21, 2019 – 24-hour average EtO Concentrations ($\mu\text{g}/\text{m}^3$)

Willowbrook

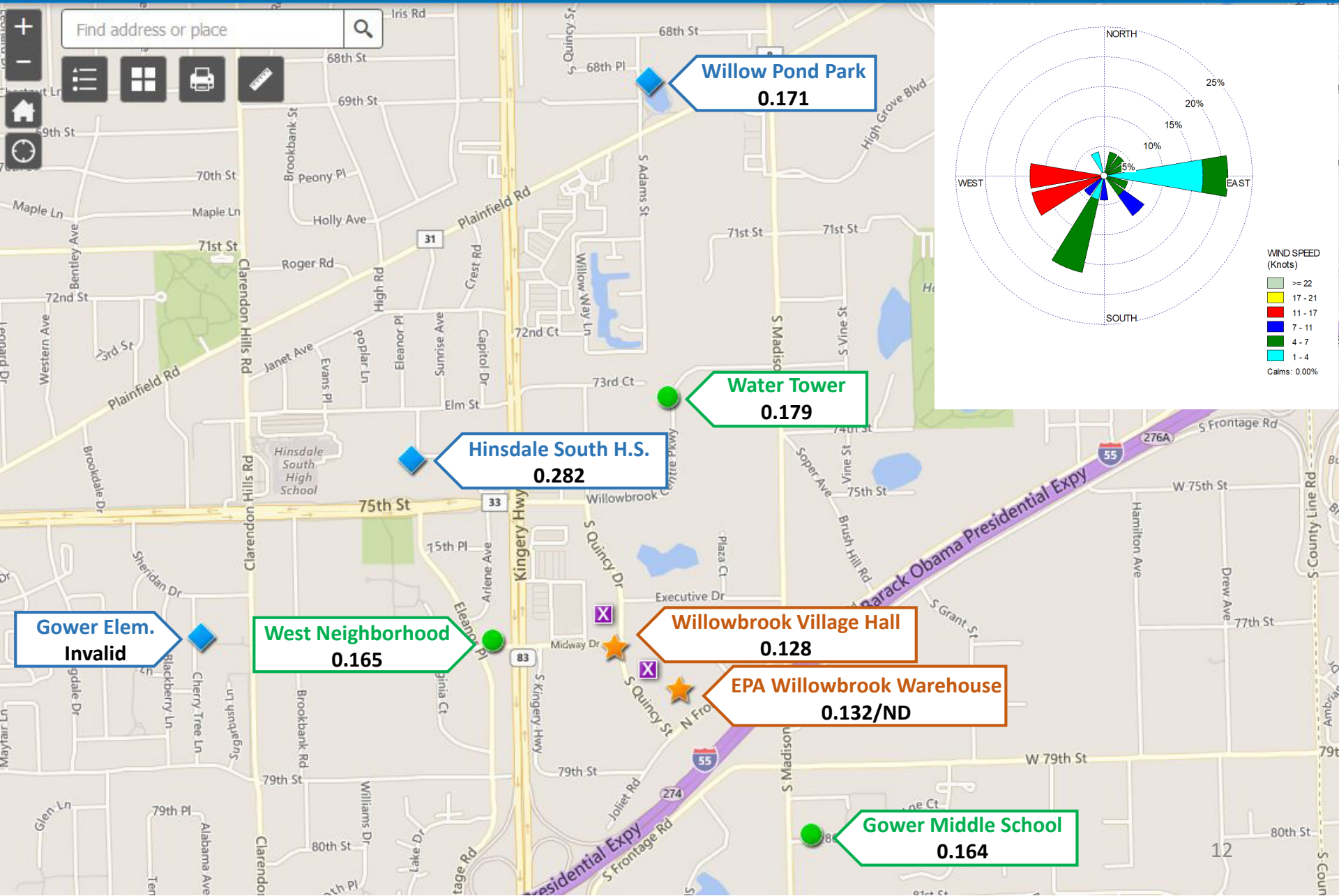
Special Sample Day – Max Sites Only



February 22, 2019 – 24-hour average EtO Concentrations ($\mu\text{g}/\text{m}^3$)



February 23, 2019 – 24-hour average EtO Concentrations ($\mu\text{g}/\text{m}^3$)



February 26, 2019 – 24-hour average EtO Concentrations ($\mu\text{g}/\text{m}^3$)

