



# **Using Comprehensive Area-Wide Planning to Promote Equitable Development**

**State Environmental Justice Training Webinar**

**Groundworks USA**

**Ironbound Community Corporation**

**New Jersey Department of Environmental Protection**

**June 18, 2019**

# Introduction

- **State Environmental Justice Training Webinar Series**
- **Using Comprehensive Area-Wide Planning to Promote Equitable Development**

<https://youtu.be/0kpwuMlnbBM>

- **Important Logistical Information**

<https://www.epa.gov/environmentaljustice/state-and-local-government>

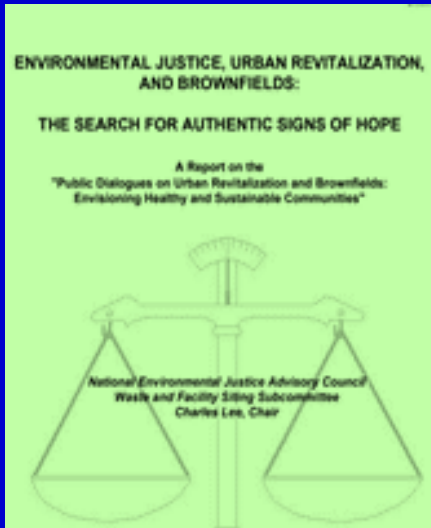
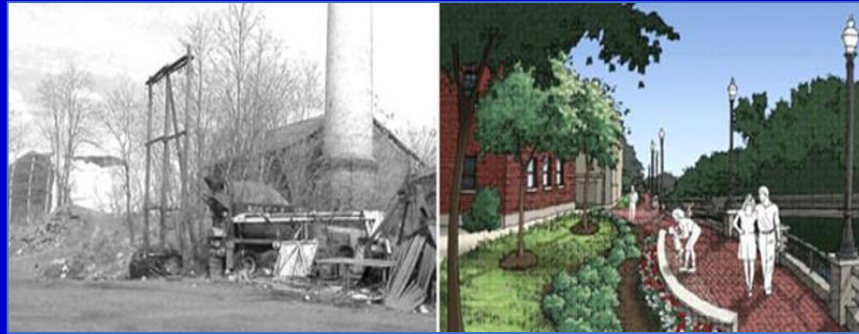


**Charles Lee**

Senior Policy Advisor for Environmental Justice  
U.S. Environmental Protection Agency

**Moderator**

# Area-Wide Planning: Historical and Current Trends (1995-2019)



**NEJAC Report**  
**EPA/Federal Brownfields Programs**

**State Brownfields/Voluntary Cleanup Programs**

**NYS Brownfields Opportunity Areas Program**

**EPA Area-Wide Planning Program**

**NJDEP Community Collaborative Initiative**

**EPA Community-Driven Solutions Approach**

**California SB 1000**

**Green Zones**



# Cate Mingoya

Director of Capacity Building  
Groundworks USA





# *Lessons from the Field: Using Area Wide Planning to Help the Communities You Serve*

State Environmental Justice Webinar Series

June 18, 2019

Cate Mingoya, [Cate@groundworkusa.org](mailto:Cate@groundworkusa.org)

# What we'll cover today:

- Introduction to GWUSA
- What is an Area Wide Planning approach?
- Why is it an important methodology?
- How this approach can help communities you serve
- Implementation assistance





## About Groundwork USA

**People-centered  
environmental  
organization focusing on  
urban areas and the  
relationship between  
community and  
environmental wellbeing.**



## About Groundwork USA



### Changing Places

- Land reclamation + transformation
- Waterway restoration + enhancement

### Changing Lives

- Education + Youth Development
- Workforce Development + Job Training
- Environmental stewardship

### Changing Systems

- Community Assessment + Visioning
- Community mobilization
- Advocacy + Partnerships

Learn more at [Groundworkusa.org](http://Groundworkusa.org)





## GWUSA- Brownfield Connection

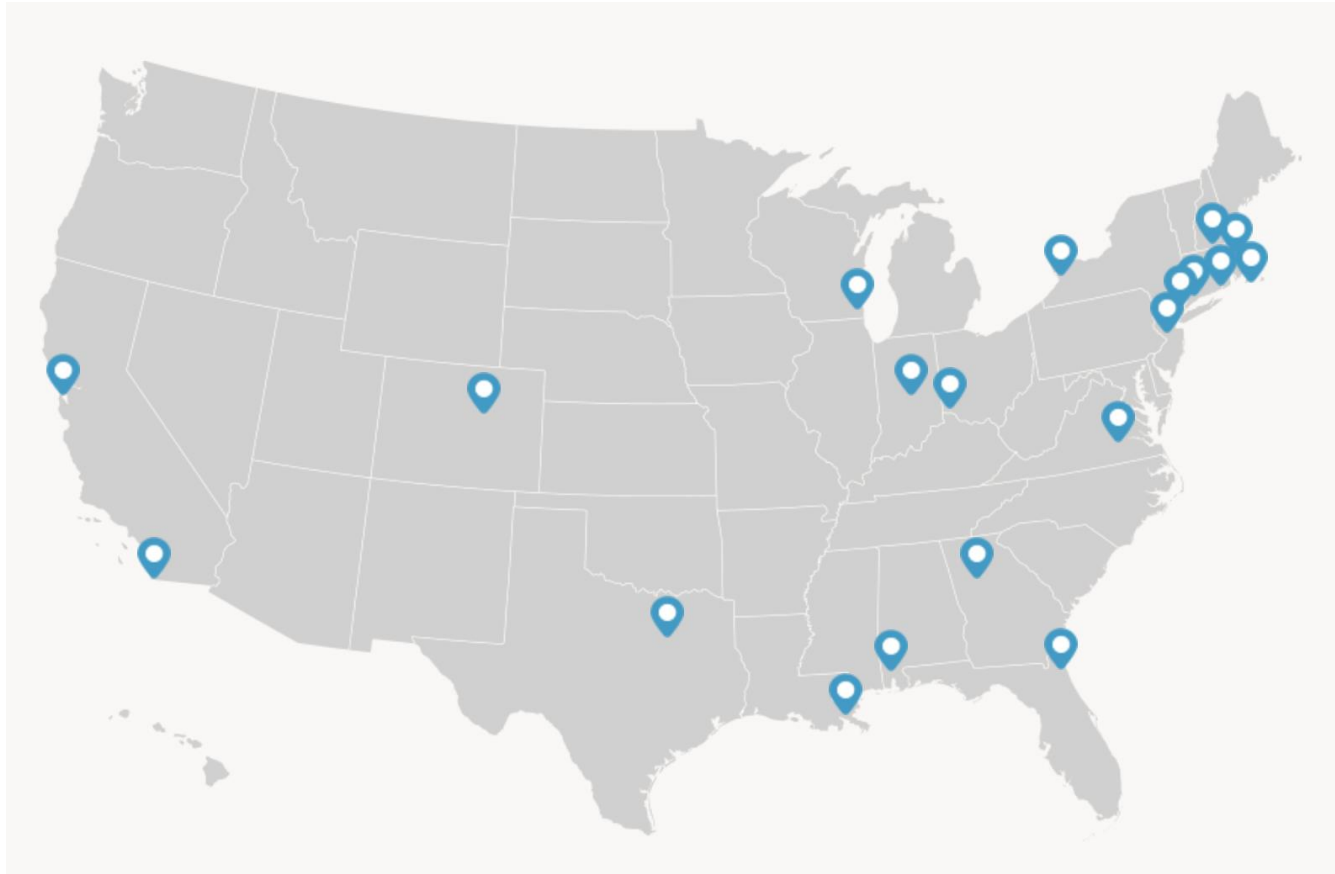


- **GWUSA offers FREE technical assistance for communities with brownfields**
- **EPA's Brownfield and Land Revitalization**

Sign up for FREE brownfield TA at [Groundworkusa.org](http://Groundworkusa.org) or [Cate@groundworkusa.org](mailto:Cate@groundworkusa.org)



## GWUSA- Brownfield Connection



- **Groundwork Trusts in 20 cities, nationwide**
- **Transforming brownfield sites into community assets**

Sign up for FREE brownfield TA at [Groundworkusa.org](http://Groundworkusa.org) or [Cate@groundworkusa.org](mailto:Cate@groundworkusa.org)

# What is Brownfields Area Wide Planning (AWP)?

AWP is an approach to research and planning that enables a community to...

- Look broadly at an area or corridor containing a number of brownfield sites
- Consider several brownfield sites simultaneously
- Start with a catalyst site
- Immediately integrate community engagement and analysis into your implementation strategy
- Actively balance planning and site activation activities



# How Can AWP Help the Communities you Serve?

- Flexible and personalized process: responds to community challenges and needs
- Builds local capacity for cross-sector collaboration
- Offers opportunities for shared leadership (nonprofits and municipal governments)
- Fosters investment in relationships, partnerships, shared vision for the future, and ultimately, community resilience
- Can spur cycle of momentum building and new investment

# Why is AWP a Great Tool for *Equitable Development*?

- One Hundred 1% solutions
- Community builds a place of their own making from the ground up
- Opportunity for creative place making
- Scope and scale allows for momentum building and many small “wins” (keeping folks in it for the long haul)
- “Area” is a flexible term that can respond to community need

# How to Meet Area-Wide Planning Challenges

# One: Communicate the Process

1. Be transparent about the length of time to do this work...
2. But also build in frequent events and milestones



## **Tools Ready and Waiting for You:**

- Groundwork USA Brownfield to Parks Guide
- Real Estate Development Process Map
- Area–Wide Planning Methods and Practices

# Two: Make Engagement Meaningful...and fun!

1. Build a big tent. Who belongs at the table and how do you get them there?
2. Make it intergenerational
3. Go to them, don't expect them to come to you
4. Value residents (and their experiences) as experts
5. Quickly demonstrate how community ideas have been incorporated



*Pop-up carnival at Groundwork Hudson Valley's Friday Farmers Market in downtown Yonkers, NY.  
Photo: Groundwork Hudson Valley*

## **Tools Ready and Waiting for You:**

- Neighborhood Voices Curriculum
- GWUSA's Asset Mapping Guide
- Brownfield to Parks Guide
- Best Practices for Meaningful Community Engagement
- Deconstructing Technical Jargon



# Three: You'll Need Money for This

1. Attractive methodology for philanthropies. AWP is inherently intersectional.
2. Seek in-kind resources and donations from your big tent
3. Where appropriate- make the work a group activity



## **Tools Ready and Waiting for You:**

- Neighborhood Voices Curriculum
- Brownfield to Parks Guide
- Area-Wide Planning Methods and Practices

# Four: Keep Folks in it for the Long Haul

1. Set expectations early.
2. Do while planning; plan while doing
3. Celebrate small, achievable goals early and often
4. Continuity in project management is important



## Tools Ready and Waiting for You:

- Neighborhood Voices Curriculum
- Brownfield to Parks Guide

# Five: Accept that Things Change!

1. Keep a flexible and fluid relationship to the catalyst site and vision
2. Nurture relationships with property and business owners

## **Tools Ready and Waiting for You:**

- Brownfield to Parks Guide
- Area-Wide Planning Methods and Practices



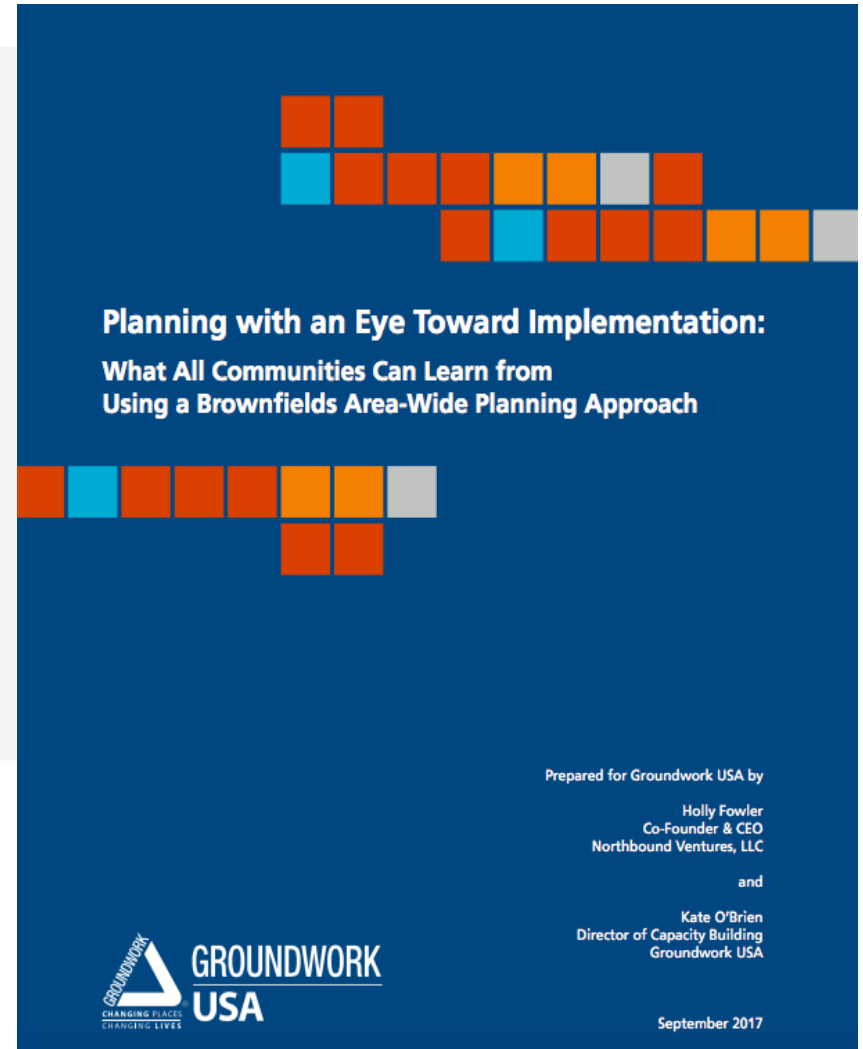
# Other Lessons Learned

- This work is cross-cutting (great for relationship building across sectors/departments)
- Plan with an eye towards implementation
- Progress in Policy is Possible! (Think zoning)
- Manage to the market you have



# Where can I learn more about the AWP approach and how to apply it in my community?

Please visit [www.groundworkusa.org](http://www.groundworkusa.org) to download this report!



# Have a brownfield project in mind? Reach out!

[Cate@groundworkusa.org](mailto:Cate@groundworkusa.org)

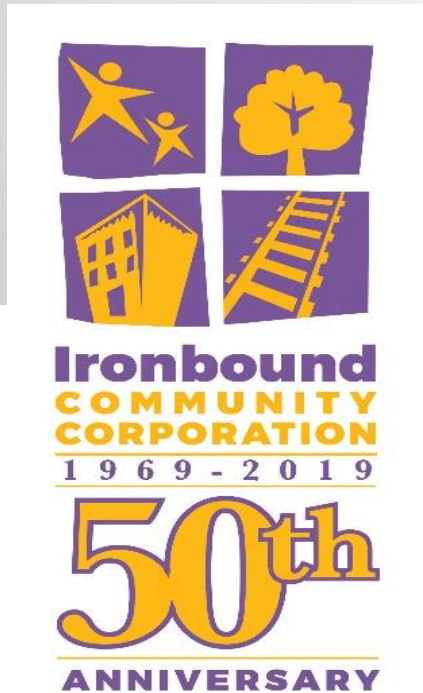
**Free** technical assistance for equitable development of brownfield sites:  
[www.groundworkUSA.org](http://www.groundworkUSA.org)



# Drew Curtis

Community Engagement Coordinator  
Ironbound Community Corporation (Newark, NJ)

# Brownfields Area-Wide Planning



**USEPA State EJ Training Webinar  
June 2019**



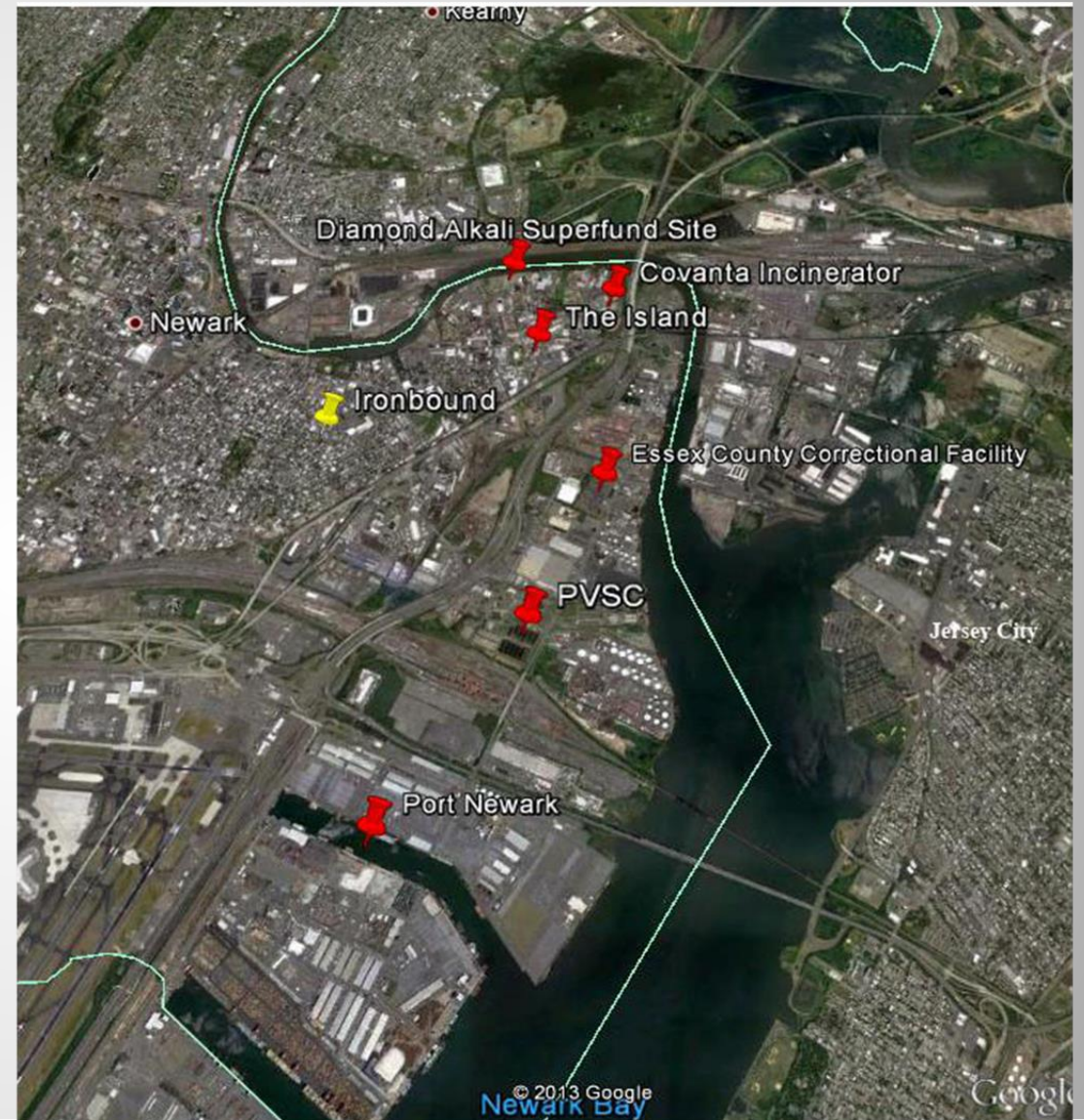
# Ironbound: EJ Context

Over 50,000 residents

Pollution impacts from freight:  
1 out of 4 Newark kids has asthma

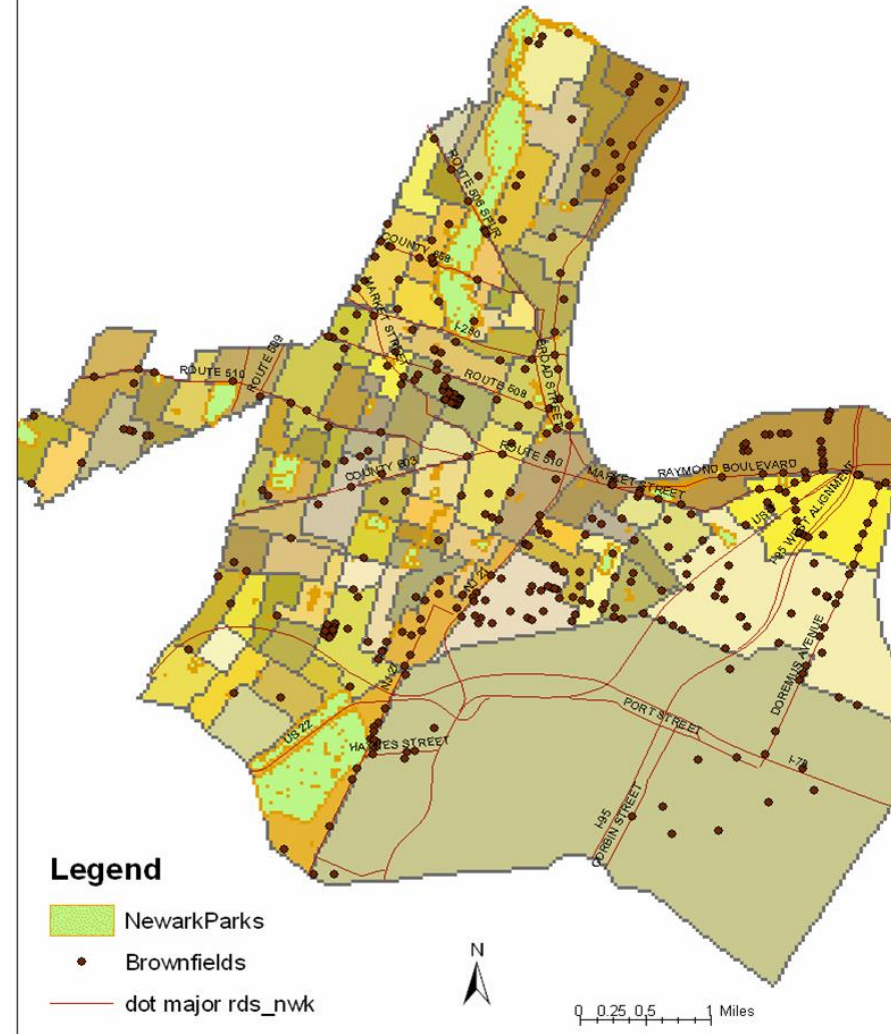
Impacts on waterways  
Passaic River is longest superfund site in nation (Dioxin)

Economic and social impacts  
80% renters  
61% foreign born  
19% poverty rate  
8% unemployment rate



- **More than 150 Brownfields in the Ironbound**
- **Broken Site Remediation System**
  - **Largest, toxic sites unfunded, not prioritized**
  - **Small former industrial plots, redeveloped into homes with caps**
  - **Little public involvement or oversight**

### Brownfields & Contaminated Properties, Newark



# IRONBOUND COMMUNITY MASTER PLAN

NEWARK, NEW JERSEY

2001

LEGEND

- Light Green Existing Parks
- Dark Green Proposed Parks & Recreation Corridors
- Yellow Existing Schools
- Dark Red Proposed Schools
- Light Blue Transition Area 1
- Dark Blue Transition Area 2
- Light Orange Mixed Use Area
- Dark Orange Future Redevelopment Area



IRONBOUND COMMUNITY MASTER PLAN  
PLAN MAESTRO DE LA COMUNIDAD DE IRONBOUND  
PLANO MESTRE DA COMUNIDADE DO IRONBOUND

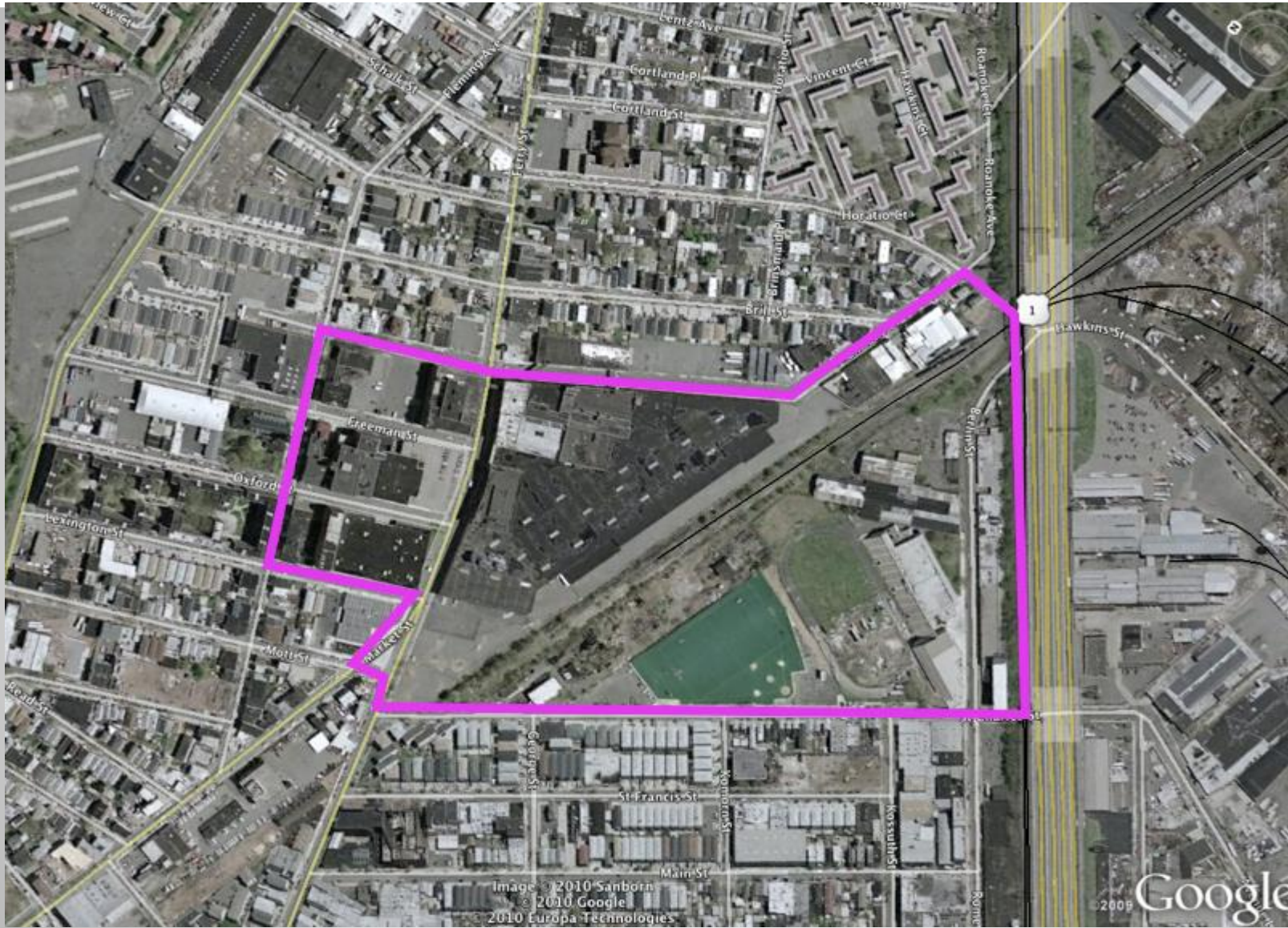
IRONBOUND COMMUNITY CORPORATION  
And the people of the Ironbound community  
Prepared by Alan Malloch, AICP, PP

Graphic design by Moya Architects  
Scale: 1" = 400'

NOTE: PLANIMETRIC INFORMATION SHOWN HEREON,  
SUCH AS BUILDINGS AND ROADWAY LOCATIONS,  
IS BASED ON MAPPING COMPILED FROM AERIAL

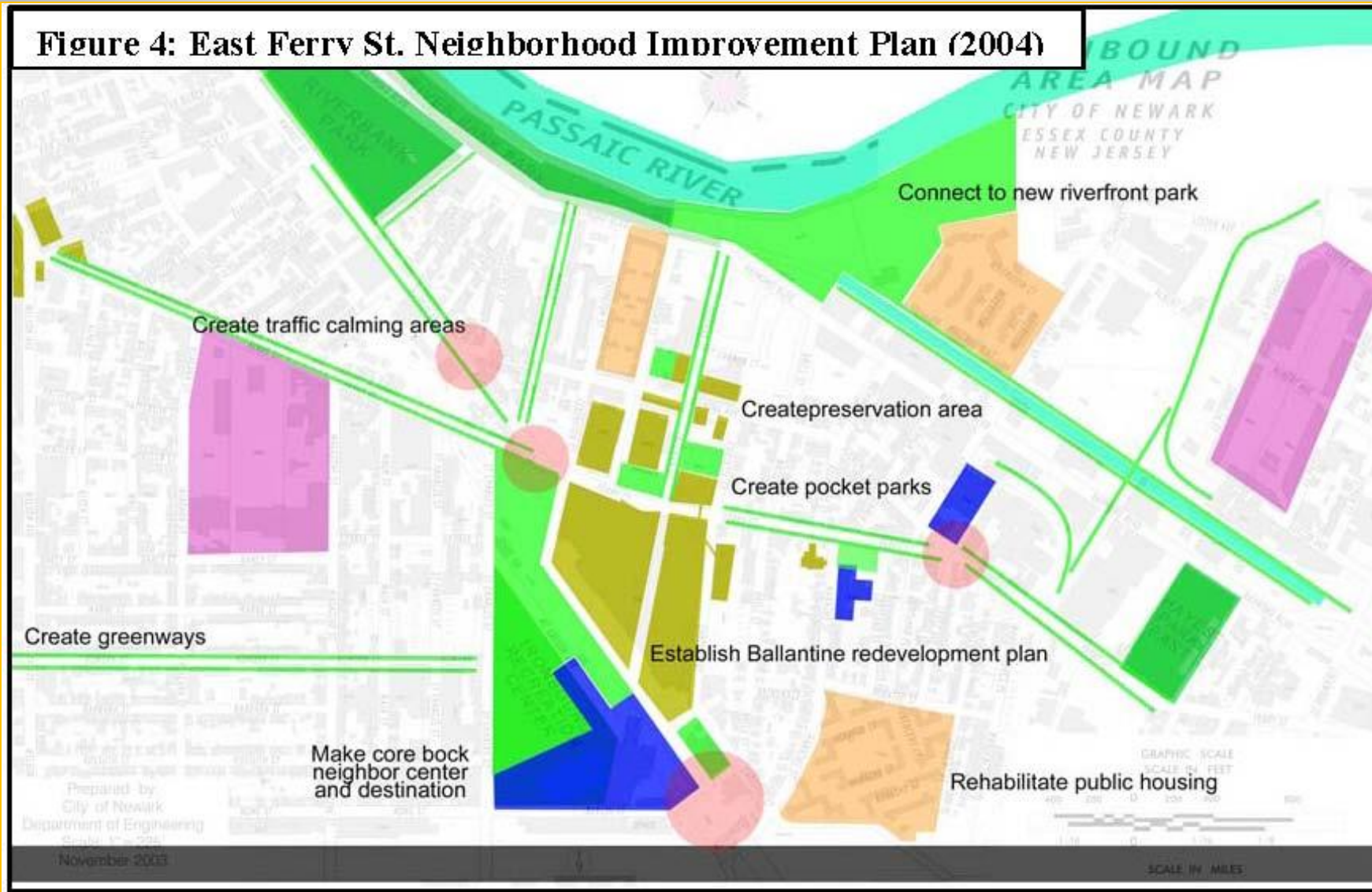


**Past Success: Newark Riverfront Park, first opened in 2012 on former Brownfields after 25 years of community-led advocacy and planning**



# Project Overview

**Figure 4: East Ferry St. Neighborhood Improvement Plan (2004)**



# Project Background



Pictometry Blvd

# Project Overview

# Project Overview







**Project Partners**



# Community Engagement

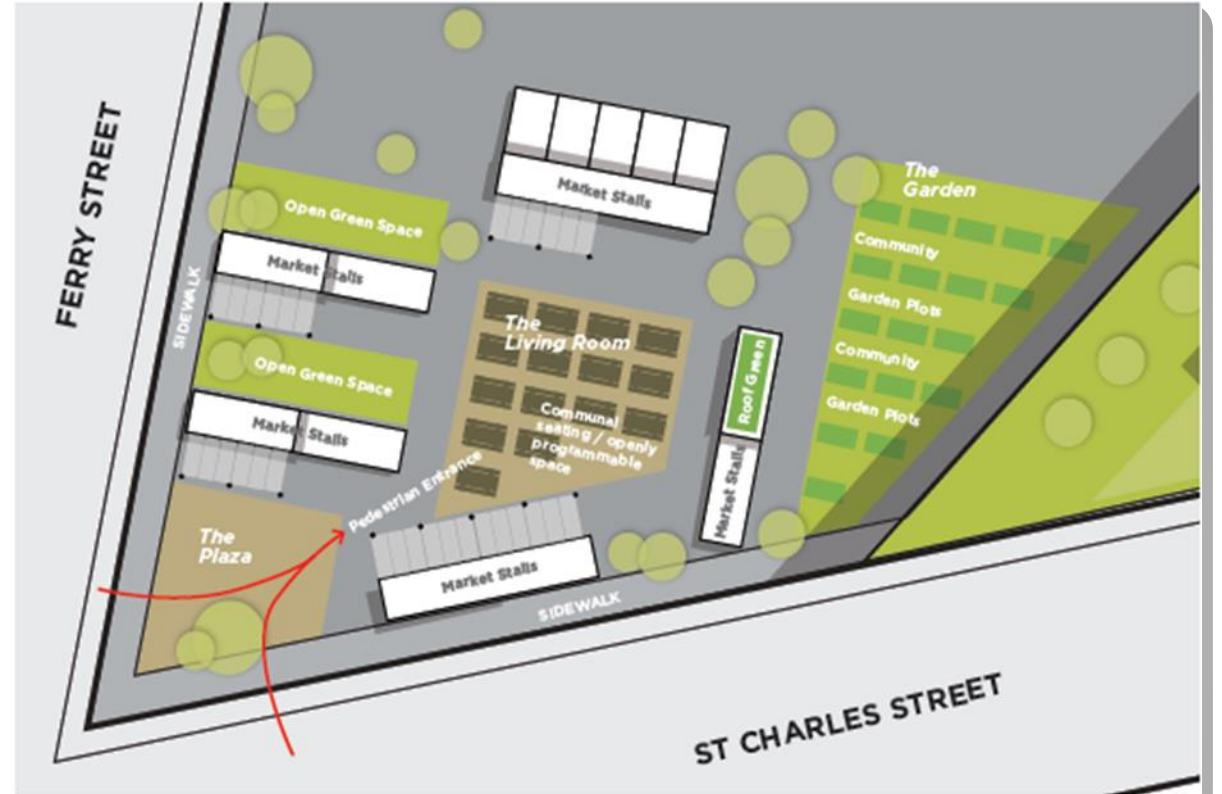


# Recreation Greening & Growing Flexible Markets

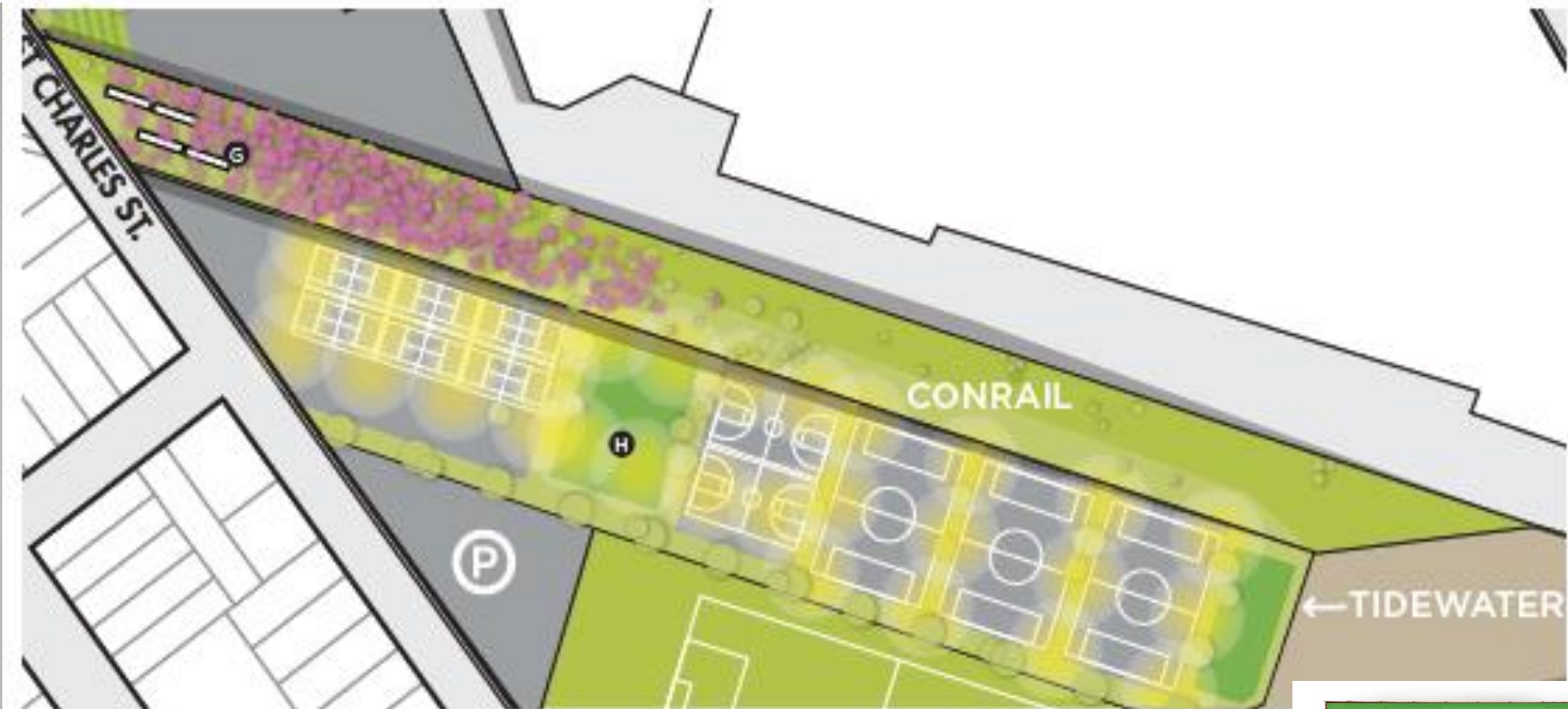
**Community Goals of Plan**

# Community Vision for Brownfields Area





# SDA Project Vision



- G Rose Garden
- H Lighting



# Conrail and Tidewater Vision

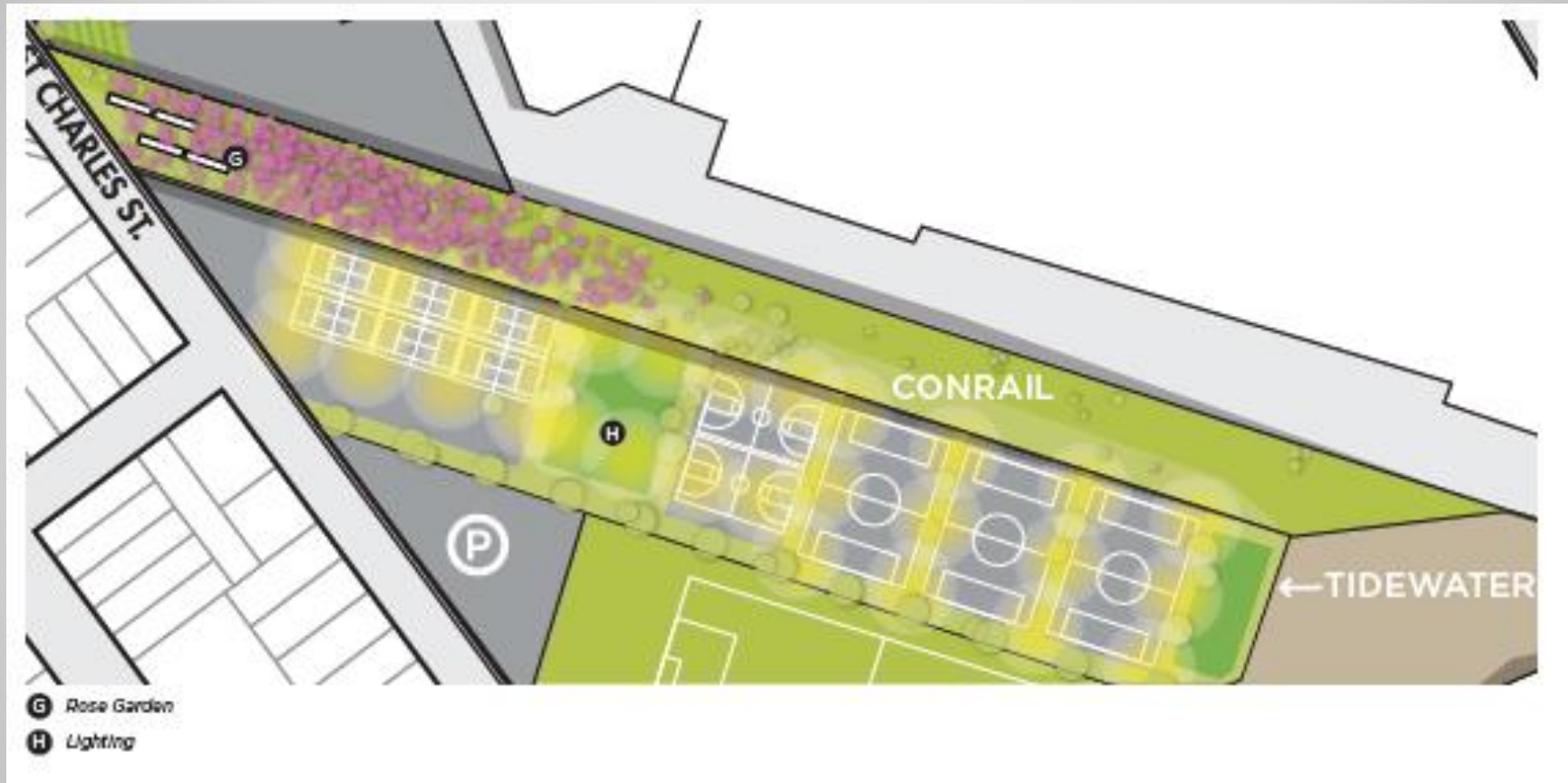
# Successes Thus Far!



- **Down Bottoms Farms:** half acre urban farm and farmer's market opened in 2016
- **Aerofarms:** world's largest, indoor vertical farm that also hires locally through ICC
- **EPA provided brownfields technical assistance grant for urban farm and for an abandoned rail spur in area**

<https://www.nytimes.com/2015/04/08/realestate/commercial/in-newark-a-vertical-indoor-farm-helps-anchor-an-areas-revival.html>

# Opportunities for Development



- Ironbound Stadium, closed over 30 years because of contamination (PCB and other heavy metals), slated to re-open this Fall 2019
- Conrail-owned freight rail line, now abandoned
- City-owned brownfield on former steel baling site, Tidewater



## **What lessons can we learn?**

- Go to the community early and often; let the community lead
- Build on existing neighborhood planning & revitalization efforts
- Grow strong partnerships
- Always keep implementation in mind
- Be patient
- Be adaptive
- Look for quick wins to keep community engaged

# For More Information

Drew Curtis

[dcurtis@ironboundcc.org](mailto:dcurtis@ironboundcc.org)

973. 817.7013 ext. 207

# Frank McLaughlin

Community Collaborative Initiative  
Office of Brownfields Reuse  
New Jersey Department of Environmental Protection



# Riche Outlaw

Coordinator, Environmental Justice Program  
Office of Brownfields Reuse  
New Jersey Department of Environmental Protection



# Creating a Placed-Based Collaborative Model in Distressed Communities in New Jersey: Community Collaborative Initiative & Statewide EJ Approach

by Frank McLaughlin, NJDEP Office of Brownfield Reuse & Community Collaborative Initiative, [frank.mclaughlin@dep.nj.gov](mailto:frank.mclaughlin@dep.nj.gov)  
and Riche Outlaw, NJDEP Office of Environmental Justice, [riche.outlaw@dep.nj.gov](mailto:riche.outlaw@dep.nj.gov)



Camden, NJ: View of Cramer Hill & North Camden neighborhoods, with Philadelphia and Delaware River in the background.

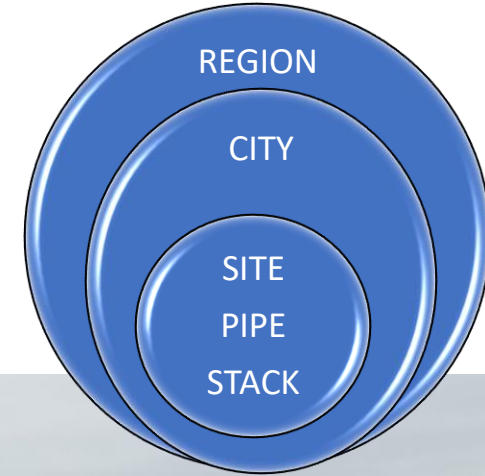


# Why have agencies underserved Underserved Communities?

We continue to think and act in 'silos'

We are not effectively engaging with all partners

No one 'owns' multi-media/complex issues



# Why have agencies underserved Underserved Communities?

What do we need to do better/different?

**Traditional programs do great work...**

*but are confined to the areas of their responsibility*

**Current challenges require diverse expertise & a placed-based lens...**

*complex problems frame integrated and multi-faceted solutions*

Program	Relationship with outside	Primary Work Goal	Work Nexus	Environmental Conditions	Environmental Opportunities	Decision-Making Lens	Working Partners
Community Collaborative	Partnership	Revitalization & Quality of Life in built environment	Place-based on Aligned Priorities	Cumulative impacts & Legacy Problems	Redevelopment, Revitalization, Restoration & Resiliency	Environmental Social & Economic	Cross-program, Cross-agency & Stakeholders
Traditional Programs	Regulatory	Protection of media/resources	Media-based on Agency priorities	Single-media	Improvements to site, pipe & stack	Resource & human health protection	Primarily regulated entities



# What have we learned to better serve Underserved Communities?

## Lessons from NJDEP's area-wide brownfields work in Camden, NJ...

*Area-wide planning around brownfields works, but comprehensive equitable revitalization requires...*

- Diverse & non-traditional partnerships
- Understanding of community needs & priorities
- Building & sustaining long-term trusted relationships
- Expertise from many program areas
- Placed-based thinking by agencies



View of undesirable land uses and contaminated stormwater runoff, Camden NJ.



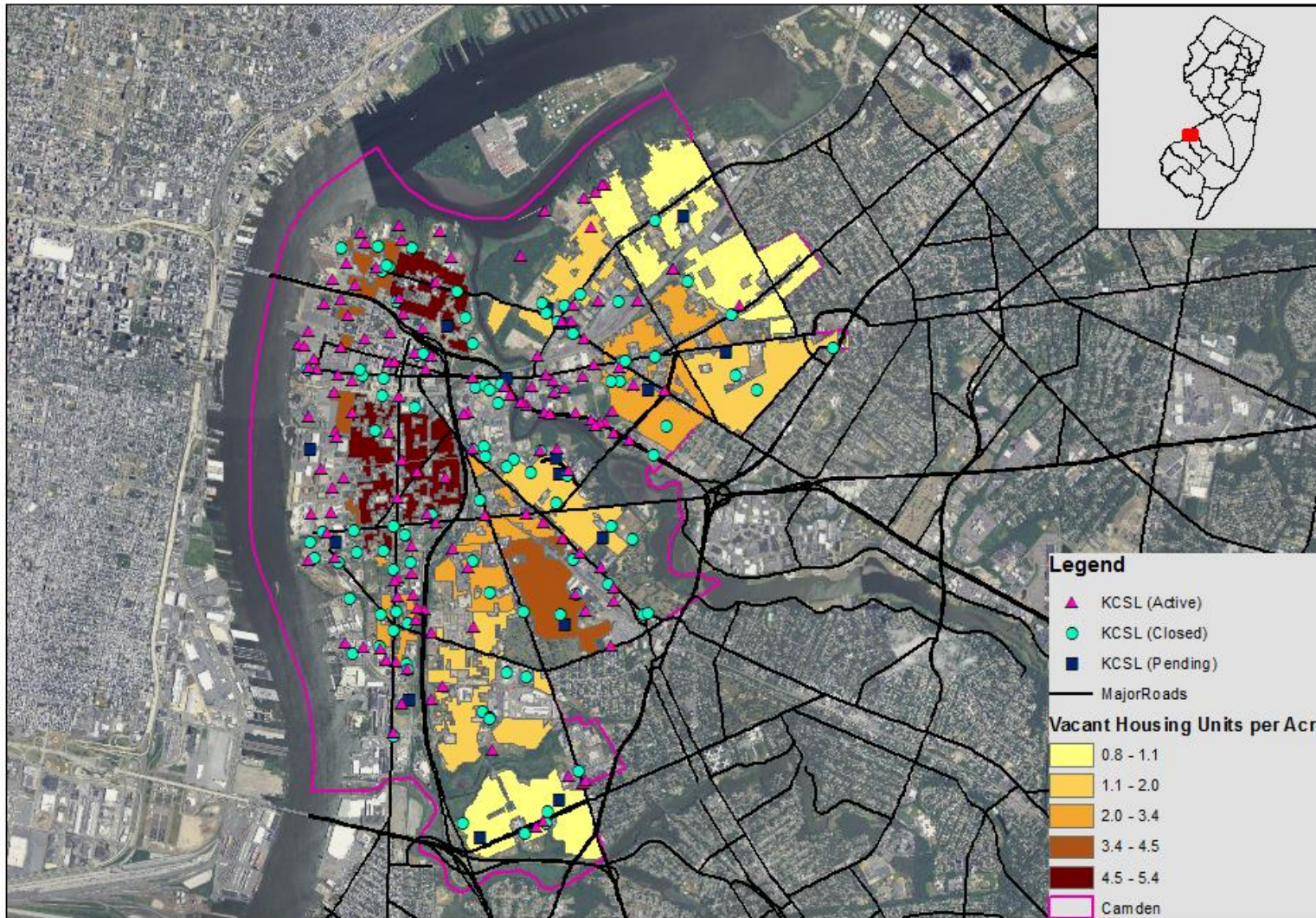
STATE OF NEW JERSEY  
DEPARTMENT OF ENVIRONMENTAL PROTECTION



# Creating a Placed-Based Collaborative Model in Distressed Communities

## Build diverse partnerships with social, economic, health & other entities

### Camden Contaminated Sites and Vacant Housing Units



**Comprehensive area-wide brownfield planning must also include non-traditional partners with other areas of expertise.**





# Creating a Placed-Based Collaborative Model in Distressed Communities

## Understanding local needs, priorities & opportunities, Camden NJ



STATE OF NEW JERSEY  
DEPARTMENT OF ENVIRONMENTAL PROTECTION



## Creating a Placed-Based Collaborative Model

Long-term trusted relationships needed for transformative changes...

### **Traditional programs: Transactional**

Single programs: not equipped to address multiple environmental stressors

Single media actions: not sufficient & don't achieve Quality of Life advances



Abandoned Gas Station, Waterfront South, Camden NJ



Waterfront South Rain Gardens Park, Camden NJ

### **Community Collaborative: Transformational**

Establish long-term trusted relationships

Imbedded staff aligns priorities & resources

*\*Brownfields planning & reuse is a great catalyst for community engagement*



STATE OF NEW JERSEY  
DEPARTMENT OF ENVIRONMENTAL PROTECTION



## Creating a Placed-Based Collaborative Model

# Expertise from many programs for Comprehensive (Collective) Impact



**Camden Labs Site:** 4-acre abandoned brownfield in residential area with fields & schools...

**Partners:** Camden Dept of Public Works  
Camden County Metro Police  
Camden Redevelopment Agency  
NJDEP (*multiple programs, C&E, Brownfields*)  
USEPA: *Brownfields (Area-wide, Assessment, cleanup)*  
HUD (*catalyst=\$13.2 Choice Implementation Grant*)

***\*Brownfields planning & reuse is a great catalyst***



STATE OF NEW JERSEY  
DEPARTMENT OF ENVIRONMENTAL PROTECTION



# Creating a Placed-Based Collaborative Model in Distressed Communities

## Placed-based thinking for Integrated & Multiple-Use Solutions

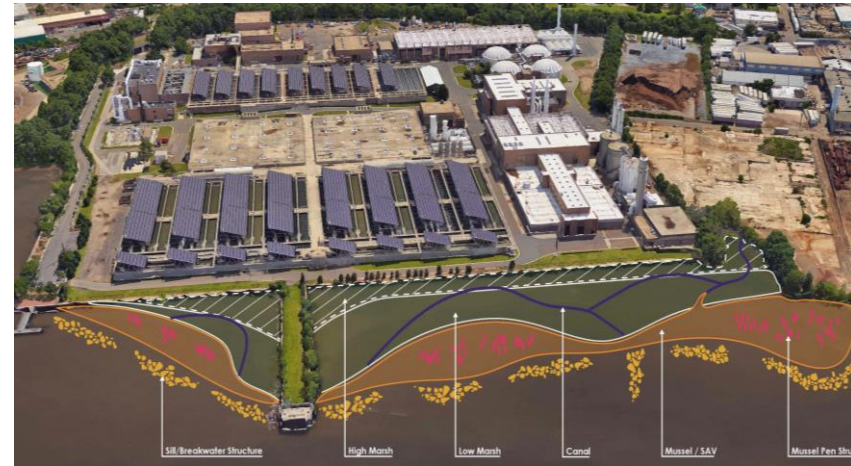
**Waterfront South: poorest neighborhood in poorest city in NJ**

**Phoenix Park: 5-acre brownfield site on Delaware River with many opportunities...**

...environmental injustice, no waterfront access, no meaningful open space  
...28 brownfield sites & 2 Superfund Sites & major sources to air, water & land  
...trash incinerator, WWTP, scrap yards, auto shredding & ports

### **Comprehensive solutions to multiple challenges**

Removed abandoned building & remediated brownfield site  
Eliminated 5 million gallons/yr of contaminated stormwater  
Created a 5-acre waterfront park with green infrastructure  
Building a trail to connect the neighborhood to the park  
Installing a living shoreline for climate resiliency

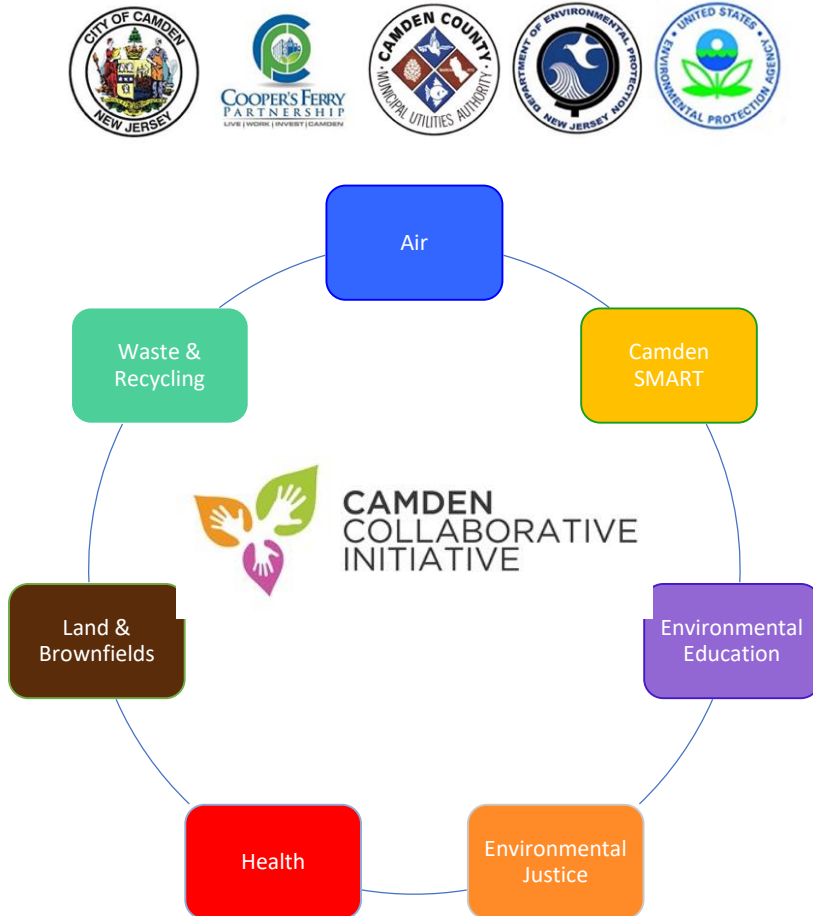


STATE OF NEW JERSEY  
**DEPARTMENT OF ENVIRONMENTAL PROTECTION**



# Creating a Placed-Based Collaborative Model in Distressed Communities

## Camden Collaborative Initiative (2013)



**Camden Collaborative Initiative (CCI)** is a solutions-oriented partnership between governmental, non-profit, private, and community-based agencies formed to plan and implement innovative strategies to improve the environment and the quality of life for Camden's residents. Over 70 partners support the Camden Collaborative Initiative.

The **Camden Collaborative Initiative** received EPA's Environmental Champion Award (2016) for most innovative & effective public-private partnership.



STATE OF NEW JERSEY  
DEPARTMENT OF ENVIRONMENTAL PROTECTION



# Creating a Placed-Based Collaborative Model in Distressed Communities

## New Jersey's Community Collaborative Initiative

**NJ uses the collaborative place-based partnership model in (4) cities:**

Camden

Perth Amboy

Trenton

Bayonne

*...expansion to (8) additional cities anticipated summer 2019...*

**Essential characteristics of NJ Community Collaborative Initiative...**



**NJ has other complementary programs and initiatives...**

Governor Murphy Executive Order #23 for Environmental Justice

Federal Opportunity Zones

EPA Community-Driven Approach



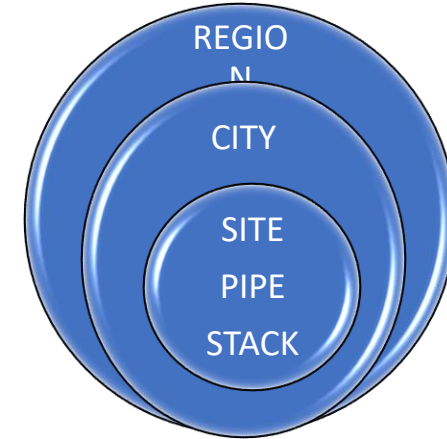
STATE OF NEW JERSEY  
DEPARTMENT OF ENVIRONMENTAL PROTECTION



# SUMMARY: Agencies can better serve Underserved Communities!

- Create diverse & non-traditional partnerships
- Understand community needs, priorities & opportunities
- Build & sustain long-term trusted relationships
- Incorporate expertise from many program areas
- Use placed-based thinking lens
- Implement integrated & multiple-use solutions

*\*Employ place-based collaborative approaches like NJ's CCI...*



STATE OF NEW JERSEY  
DEPARTMENT OF ENVIRONMENTAL PROTECTION



“Creating a Placed-Based Collaborative Model in  
Distressed Communities in New Jersey:  
Community Collaborative Initiative & Statewide EJ Approach”

Frank McLaughlin, NJDEP Office of Brownfield Reuse & Community Collaborative Initiative

Contact: [frank.mclaughlin@dep.nj.gov](mailto:frank.mclaughlin@dep.nj.gov)

NJDEP Office of Brownfield Reuse: <https://www.nj.gov/dep/srp/brownfields/>

NJDEP Community Collaborative Initiative: <https://www.nj.gov/dep/cci/>

Camden Collaborative Initiative: <http://www.camdencollaborative.com/>



View of remediation of Harrison Ave Landfill, The Salvation Army Kroc Community Center, Camden NJ



STATE OF NEW JERSEY  
DEPARTMENT OF ENVIRONMENTAL PROTECTION







STATE OF NEW JERSEY  
DEPARTMENT OF ENVIRONMENTAL PROTECTION  
OFFICE OF ENVIRONMENTAL JUSTICE

## Riché Outlaw, Manager

The goal of the Office of Environmental Justice is to empower residents and communities who are often outside of the decision-making process.

<https://www.nj.gov/dep/ej/>

OEJ is a Commissioner-level office at NJDEP that works with all of programs.



STATE OF NEW JERSEY  
DEPARTMENT OF ENVIRONMENTAL PROTECTION



# NJDEP Priorities

- Reduce and respond to climate change
- Protect New Jersey's water
- Revitalize our communities and protect public health
- Manage and promote thriving and natural and historic resources
- Strengthen the DEP

# NJDEP Principles

- Follow the law
- Use the best available science
- Listen to all sides
- Find the best balance
- Be transparent and honest with the public



STATE OF NEW JERSEY  
**DEPARTMENT OF ENVIRONMENTAL PROTECTION**



# Governor Murphy Executive Order No. 23



- EO-23 signed April 20, 2018
- Directs DEP to develop guidance
- Establishes Department of Environmental Protection (DEP) as Lead Agency
- Continues the Environmental Justice Advisory Council (EJAC)
- Draft Guidance Released for Public Comment
- <https://www.nj.gov/dep/ej/eo23/index.html>



STATE OF NEW JERSEY  
DEPARTMENT OF ENVIRONMENTAL PROTECTION



# Interagency Council

- Department of Environmental Protection, Chair
- **Department of Health**
- Department of Community Affairs
- Department of Children and Families
- **Department of Education**
- Department of Law and Public Safety
- **Department of Transportation**
- Department of Motor Vehicles
- **Board of Public Utilities**
- Office of Emergency Management
- **Department of Agriculture**
- Department of State, including the Business Action Center
- Economic Development Authority
- Department of Human Services
- Department of Labor and Workforce Development
- Office of Homeland Security and Preparedness



STATE OF NEW JERSEY  
DEPARTMENT OF ENVIRONMENTAL PROTECTION

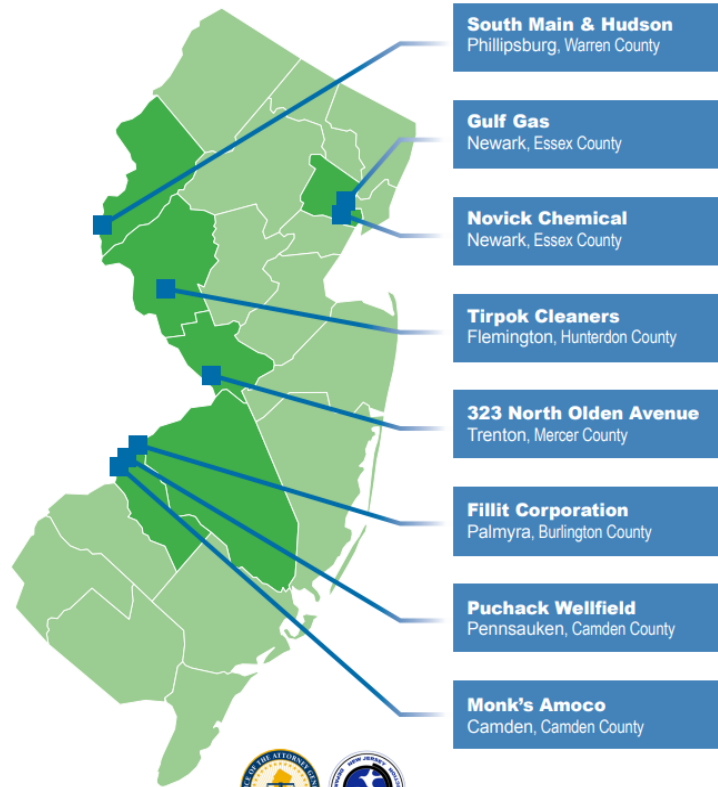


# Current EJ Initiatives and Collaborations

## Promoting Environmental Justice

Protecting All Communities From Harm

Environmental Enforcement Actions Across New Jersey



Partnership with NJ Attorney General's Office

NJ Community Collaborative Initiative (CCI)

- Camden
- Trenton
- Perth Amboy
- Bayonne

Coming soon: Newark & Paterson & (6) more cities

New Jersey's Proposed Legislation: Senate Bill -S1700

Climate Change Initiatives:

- New Jersey Re-Entry to RGGI
- New Jersey Transportation Climate Initiative (TCI)



STATE OF NEW JERSEY  
DEPARTMENT OF ENVIRONMENTAL PROTECTION





Riché S. Outlaw, Manager  
NJDEP Office of Environmental Justice  
Email: [Riche.Outlaw@dep.nj.gov](mailto:Riche.Outlaw@dep.nj.gov)



(609) 633-0747 office  
(609) 775-7455 mobile

Executive Order No. 23  
Email: [eo23@dep.nj.gov](mailto:eo23@dep.nj.gov)

Website: [www.nj.gov/dep/ej/eo23](http://www.nj.gov/dep/ej/eo23)



STATE OF NEW JERSEY  
DEPARTMENT OF ENVIRONMENTAL PROTECTION



# Discussion

- **Summary**
- **Questions and Answers**
- **For more information, tools and resources, go to EPA Environmental Justice Learning Center**

<https://www.epa.gov/environmentaljustice/state-and-local-government>



**State Environmental Justice Training Webinar**  
**Using Comprehensive Area-Wide Planning to Promote Equitable Development**  
**Learning Objectives**

- (1) Learn what area-wide planning is and its key elements.
- (2) Hear how a specific community has utilized area-wide planning approaches to promote community revitalization and equitable development.
- (3) Learn how a state environmental agency has developed comprehensive community initiatives to address the needs of distressed communities.
- (4) Understand the value and importance of involving community in the planning process.
- (5) Learn about how multiple offices within an agency, multiple agencies and groups can come together to collaborate and advance community revitalization.
- (6) Understand why comprehensive integrated partnerships that holistically address community needs, aspirations and visions is an important way to advance environmental justice and equitable development.



**State Environmental Justice Training Webinar**  
**Using Comprehensive Area-Wide Planning to Promote Equitable Development**  
**Biographies**

**Cate Mingoya**

Cate Mingoya serves as Groundwork USA's Director of Capacity Building. Originally from Queens, New York, Cate earned her B.A. in Biology from Reed College in Portland, Oregon, and returned east to teach middle school science at traditional public and charter schools in The Bronx and in Brownsville, Brooklyn. She went on to earn a Master of City Planning from MIT and has served as the Director of Policy and Program Development for the Commonwealth of Massachusetts's Division of Public Housing and Rental Assistance. In her current role, Cate provides equitable development technical assistance for those looking to transform brownfields into community assets. Cate also leads Groundwork USA's Climate Safe Neighborhoods project, a five-city partnership, funded in part by the Kresge Foundation, to reduce heat and flooding related risks in neighborhoods with histories of institutional, race-based housing discrimination. She lives with her husband, daughter, and cat in Massachusetts and loves coffee, bike riding, canoe trips, and travel.

**Drew Curtis**

Drew Curtis has served at Ironbound Community Corporation (ICC) for the past nine years in multiple roles, working on community organizing, public policy advocacy, neighborhood planning & revitalization, urban agriculture, economic empowerment & development, and affordable housing initiatives. All of this work is grounded in principles of justice and equity. He comes to ICC from the Bergen County Division of Community Development, where he coordinated economic development projects and oversaw compliance with federal regulations in the areas of fair housing, labor standards, and the environment. Before then, Drew worked for several youth development and community-based nonprofits in New York City and Paterson, NJ. Drew holds a Master of Science in Urban Policy Analysis and Management from Milano School of International Affairs, Management, and Urban Policy at the New School University. He also sits on the board of the Essex Community Land Trust, which has the mission of keeping housing perpetually affordable.

**Frank McLaughlin**

Frank McLaughlin is a Brownfields Project Manager at the New Jersey Department of Environmental Protection (NJDEP) Office of Brownfield Reuse Community Collaborative Initiative. He has worked in the environmental and geological sciences fields for over 30 years in the public, private, and academic sectors. Frank initially worked at NJDEP as a Hydrogeologist and later in the Office of Brownfield Reuse managing brownfield development area (BDA) projects in Camden, Pennsauken, and Palmyra. Frank has overseen the successful reclamation of numerous brownfields and landfills in Camden to create new economic, community and environmental assets including the Salvation Army Camden's Ray & Joan Kroc Community Center on the former Harrison Avenue Landfill.

Frank is also NJDEP's lead for the Camden Collaborative Initiative, a place-based solutions-oriented partnership between governmental, non-profit, private, and community-based organizations formed to implement innovative strategies to improve the environment and the quality of life for Camden's residents. The Camden Collaborative Initiative has become a national model of successful public-private

partnerships and it received USEPA's Environmental Champion Award in 2016. In 2015, Frank co-launched NJDEP's Community Collaborative Initiative, bringing the collaborative partnership model to Trenton, Perth Amboy and Bayonne. Frank is also a founding member of the Camden SMART Initiative, a recognized leader in pro-active approaches to multimedia urban environmental challenges, and he Co-Chairs the Brownfields Revitalization Community of Practice for the Delaware River Urban Waters Federal Partnership. Frank received his B.S. in Chemistry and Geology from Fairleigh Dickinson University (1985) and M.S. degrees from Rutgers University in Geological Sciences (1988) and Environmental Sciences (2006).

### **Riché Outlaw**

Riché Outlaw has served in various capacities with the New Jersey Department of Environmental Protection for over 25 years. In her current role as the State's Environmental Justice Coordinator she passionately advocates and leads the Department's effort in addressing the environmental impacts that disproportionately burden the most vulnerable communities in our state. She is ideally suited to this role, more as a calling than that of a career choice. With family ties that were deeply rooted in Montgomery, Alabama, during the Civil Rights Movement throughout the 1960s, Riché learned first-hand about the importance of social activism in the face of injustice and disproportionate impacts as well as the value of collective power and community engagement.

Prior to her appointment to the Office of Environmental Justice, Riché garnered over 20 years of experience as a Case Manager in the Site Remediation Program working on Superfund, RCRA, NJDOT roadway projects and responsible party remediation sites. She began her career at DEP in the Division of Water Resources, Construction Grants Program where she evaluated the environmental impacts associated with the technical upgrades of wastewater treatment plants.

In addition to her NJDEP responsibilities, Riché is actively involved in several civic and professional organizations including the Society of Women Environmental Professionals, Greater Pennsylvania and New Jersey chapter, where she is the chairman of the DEP Regulatory Update meeting. Riche is a life member of the Alpha Kappa Alpha Sorority, Incorporated, Theta Pi Omega chapter, where she was the chairman of the Environmental Stewardship and Sustainability Initiative. Riché received her Bachelor of Science in Biology from the prestigious Tuskegee University in Alabama. She is happily married to Dev Outlaw and they have 2 lovely daughters, Courtney and Simone.

### **Charles Lee (Moderator)**

Charles Lee is widely recognized as a true pioneer in the arena of environmental justice. He was the principal author of the landmark report, *Toxic Wastes and Race in the United States*. He helped to spearhead the emergence of a national environmental justice movement and federal action including the First National People of Color Environmental Leadership Summit, Executive Order 12898, EPA's Office of Environmental Justice, National Environmental Justice Advisory Council (NEJAC), and the Federal Interagency Working Group on Environmental Justice.

Charles Lee is currently the Senior Policy Advisor for Environmental Justice at the U.S. Environmental Protection Agency (EPA). He led the development and implementation of EPA's agency-wide environmental justice strategic plans, e.g., Plan EJ 2014 and EJ 2020. He has served in multiple capacities, ranging from creating the United Church of Christ's environmental justice program to directing EPA's environmental justice office. In these capacities, he led efforts to incorporate

environmental justice into EPA's rulemaking process, develop models for collaborative problem-solving, transform brownfields redevelopment into a community revitalization paradigm, advance approaches to address cumulative risks and impacts, and lay a strong science foundation for integrating environmental justice into decision-making. Mr. Lee has authored numerous papers and articles on environmental justice over the past three decades and received numerous awards.

## COMPREHENSIVE AREA-WIDE PLANNING RESOURCES

### FACT SHEET

June 18, 2019

#### **Groundworks USA**

Planning with an Eye Toward Implementation: What All Communities Can Learn from Using a Brownfields Area-Wide Planning Approach

<https://groundworkusa.org/bfawp-report/>

Achieving Equitable Community Development: Creating a Restorative Trauma-Informed Approach in Environmental Community Development Organizations

<https://groundworkusa.org/new-groundwork-usa-white-paper-offers-restorative-trauma-informed-approach-building-community-resilience-prosperity/>

#### **New Jersey Department of Environmental Protection Community Collaborative Initiative**

<https://www.nj.gov/dep/cci/>

Discover DEP: Camden Collaborative Initiative with Frank McLaughlin (NJDEP Podcast)

<https://njdep.podbean.com/e/episode-6-camden-collaborative-initiative-with-frank-mclaughlin/>

Camden Collaborative Initiative Strives for Sustainability (US EPA Video)

<https://www.youtube.com/watch?v=vzIJmHhSC3M>

#### **California “Planning for Healthy Communities Act” (Senate Bill 1000) and Green Zones**

Senate Bill 1000 Legislative Language

[https://leginfo.legislature.ca.gov/faces/billNavClient.xhtml?bill\\_id=201520160SB1000](https://leginfo.legislature.ca.gov/faces/billNavClient.xhtml?bill_id=201520160SB1000)

California Governor’s Office of Planning and Research Draft Environmental Justice Chapter in General Plan Guidelines (final chapter forthcoming)

<http://opr.ca.gov/news/2018/11-20.html>

California Office of Planning and Research SB 1000 Workshop Presentation

[http://opr.ca.gov/docs/20180410-Oakland\\_SB\\_1000\\_OPR\\_Workshop.pdf](http://opr.ca.gov/docs/20180410-Oakland_SB_1000_OPR_Workshop.pdf)

California Environmental Justice Alliance SB 1000 Toolkit

<https://caleja.org/2017/09/sb-1000-toolkit-release/>

California Environmental Justice Alliance Green Zones Report

<https://caleja.org/2018/08/ceja-releases-new-green-zones-report/>

#### **New York Brownfields Opportunity Areas Program**

<https://www.dos.ny.gov/opd/programs/brownFieldOpp/index.html>

Brownfields Area-Wide Planning Fact Sheet (US EPA)

[https://www.epa.gov/sites/production/files/2015-09/documents/awp-factsheet-july-2012\\_0.pdf](https://www.epa.gov/sites/production/files/2015-09/documents/awp-factsheet-july-2012_0.pdf)

#### **American Planning Association**

*Fair and Healthy Land Use: Environmental Justice and Planning* (by Craig Anthony Arnold)

Planning Advisory Service Report Number 549/550