

Macroinvertebrates of the South Platte Watershed

Indicators of Water Quality

Group 1 – Pollution Sensitive

These animals indicate excellent water quality.



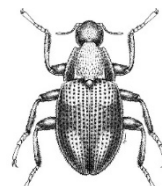
stonefly larva



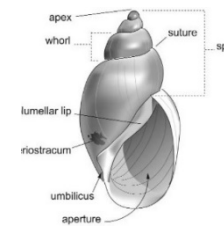
mayfly larva



caddisfly larva



riffle beetle



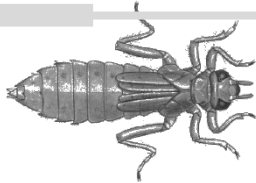
right-handed snail

Group 2 – Pollution Intolerant

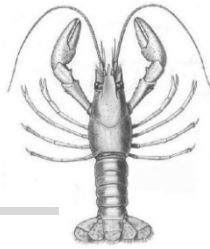
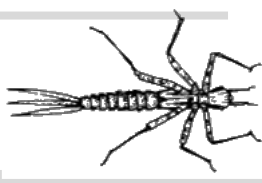
These animals indicate good water quality.

crayfish

dragonfly larva



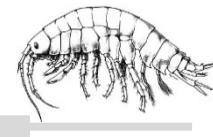
damselfly larva



freshwater clam



scud



crane fly larva



Group 3 – Moderately Pollution Tolerant

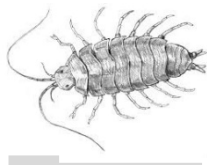
These animals indicate fair water quality.



water boatman



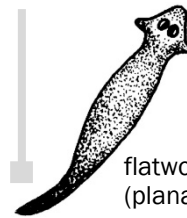
blackfly larva



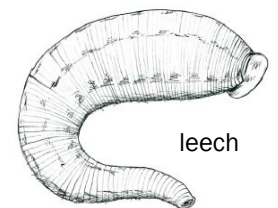
isopod
(aquatic sowbug)



midge larva



flatworm
(planarian)



leech

Group 4 – Pollution Insensitive

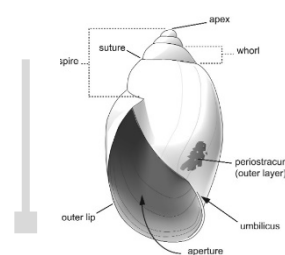
These animals indicate poor water quality.



blood midge
(bright red)



aquatic worm



left-handed snail

