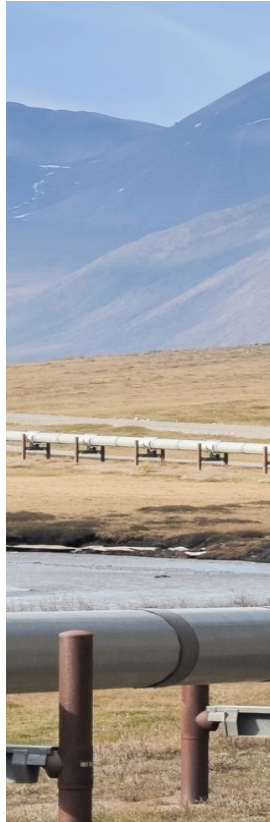


SMART LEAK DETECTION – METHANE (SLED/M)



Heath Spidle

Engineer

Southwest Research Institute



ADVANCED SCIENCE. APPLIED TECHNOLOGY.

How is SLED/M™ Different?

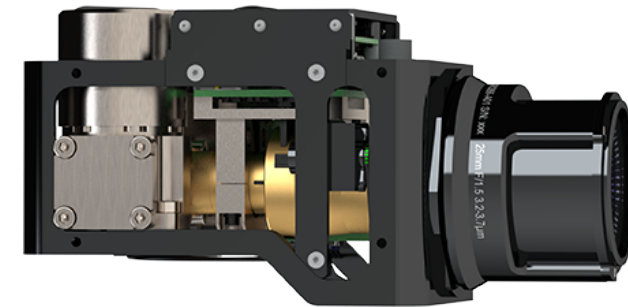
Remote Sensing + Artificial Intelligence



U.S. DEPARTMENT OF
ENERGY



- State-of-the-art mid-wave infrared (MWIR) camera (COTS)
- Expands on the limitations of existing methane sensors
 - **Machine learning-based detection algorithms** to autonomously and reliably (low false alarm rates) detect methane
- Powerful deep learning algorithms (AI) for reliable plume identification
 - No human in the loop
 - Reliable false positive rejection
- Can be used for surveillance and ROW intrusion detection
 - Objective detection
 - Vehicle detection



ADVANCED SCIENCE. APPLIED TECHNOLOGY.



swri.org

Can You Spot the Methane?

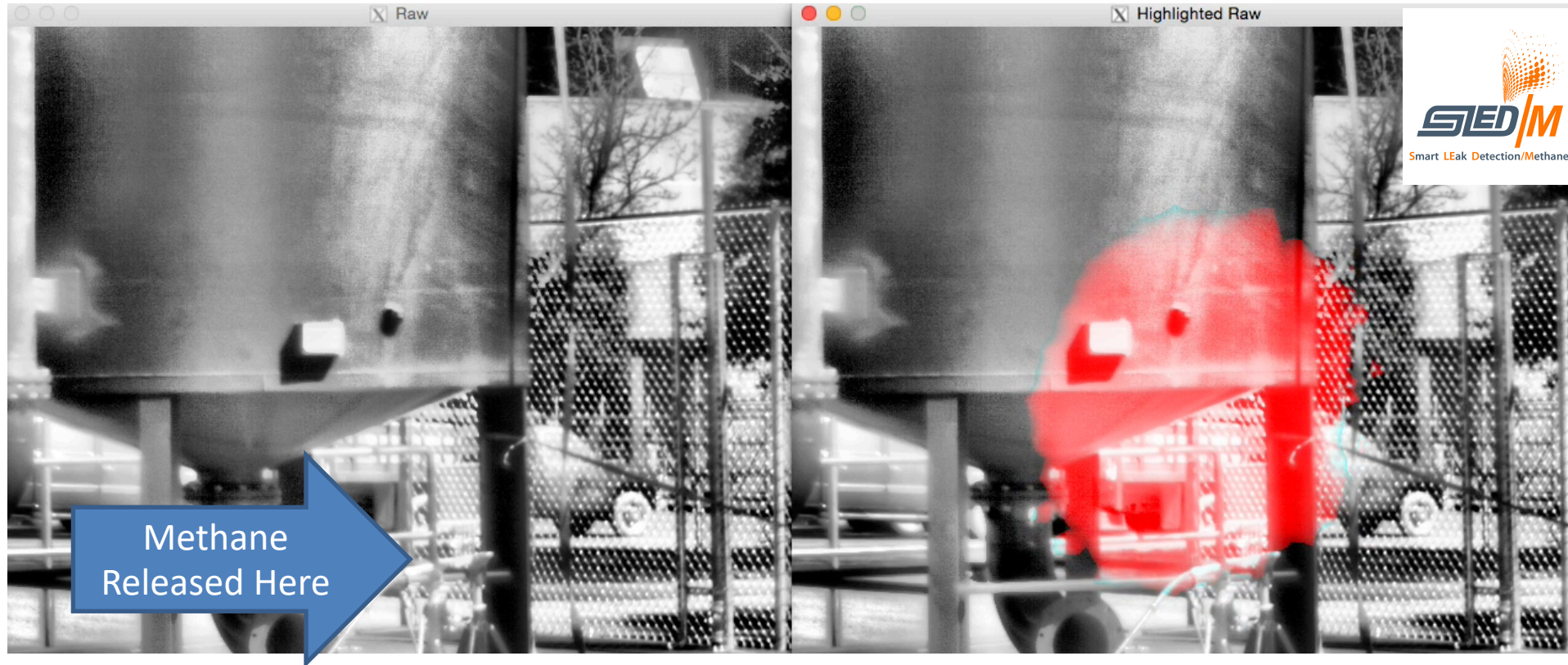


U.S. DEPARTMENT OF
ENERGY



OGI Camera Video
Can You Spot the Methane?

SLED/M™ Processed Video
Methane Highlighted in Red



U.S. DEPARTMENT OF
ENERGY



NATIONAL
ENERGY
TECHNOLOGY
LABORATORY

Patent Pending

ADVANCED SCIENCE. APPLIED TECHNOLOGY.



swri.org

Spotting Methane Emissions With SLED/M™

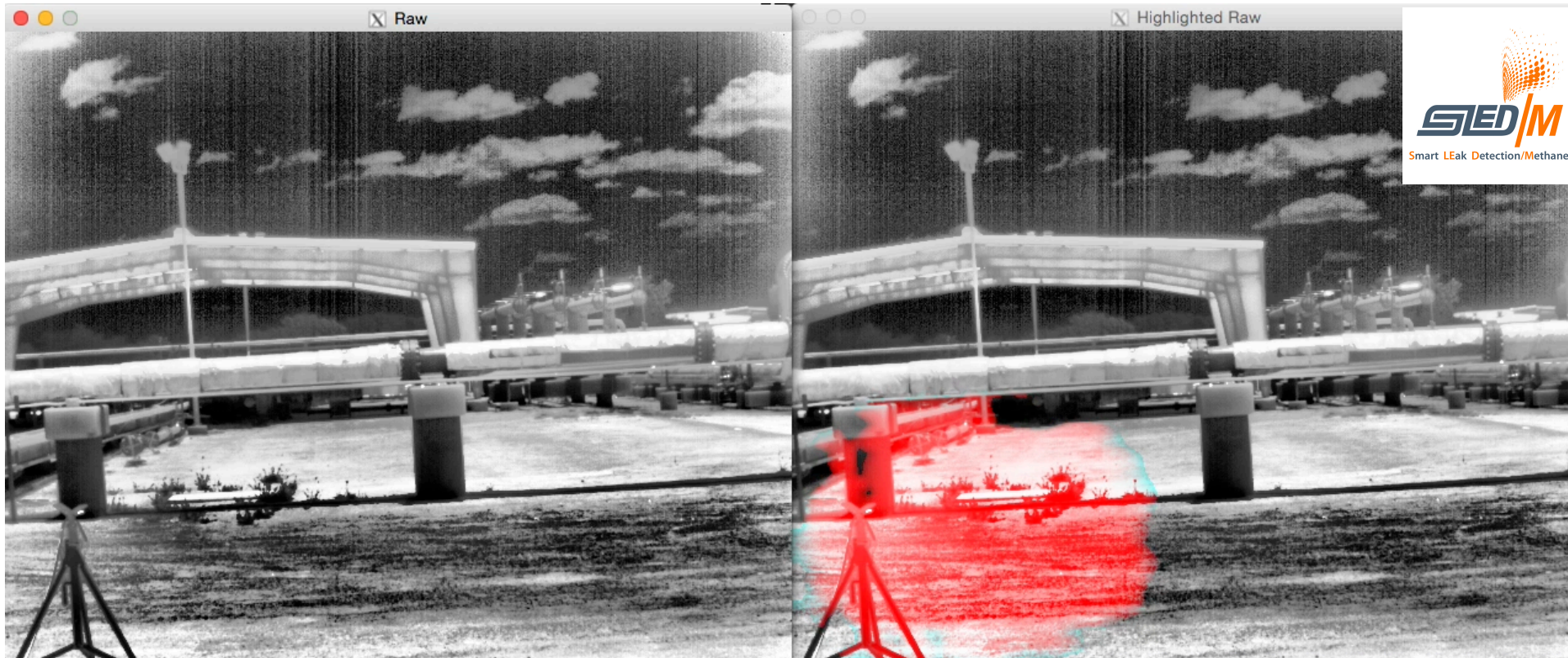


U.S. DEPARTMENT OF
ENERGY



OGI Camera Video
Can You Spot the Methane?

SLED/M™ Processed Video
Methane Highlighted in Red



U.S. DEPARTMENT OF
ENERGY



NATIONAL
ENERGY
TECHNOLOGY
LABORATORY

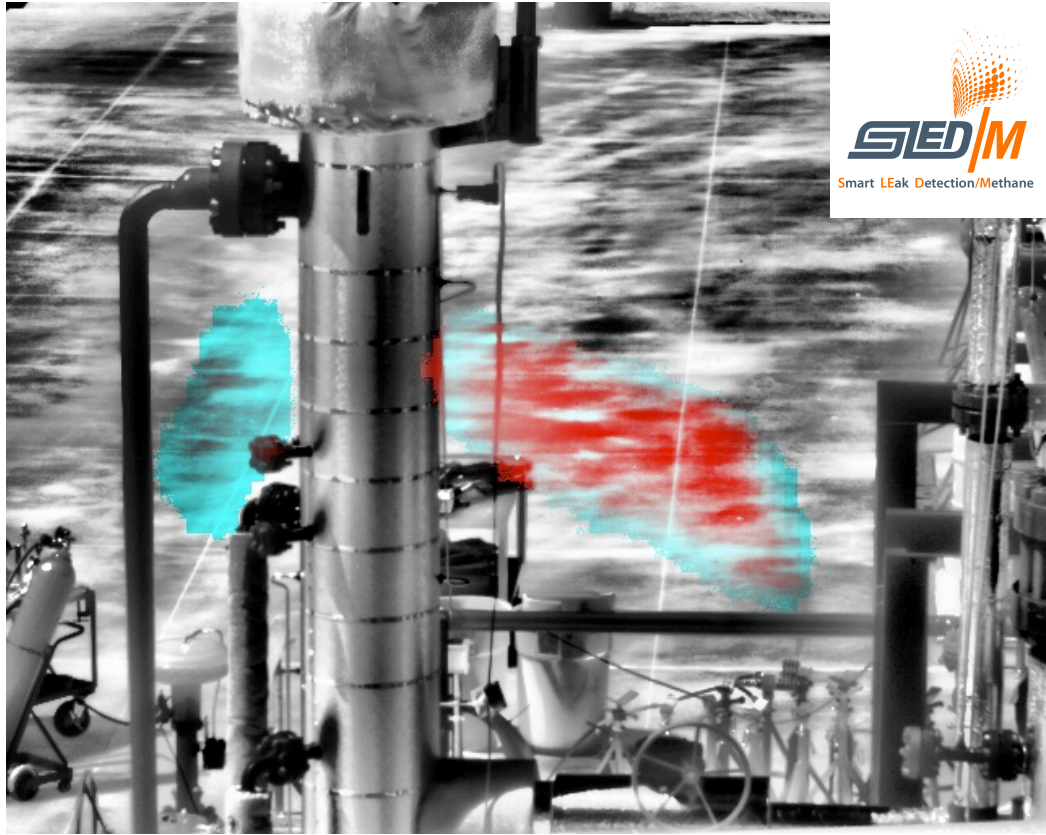
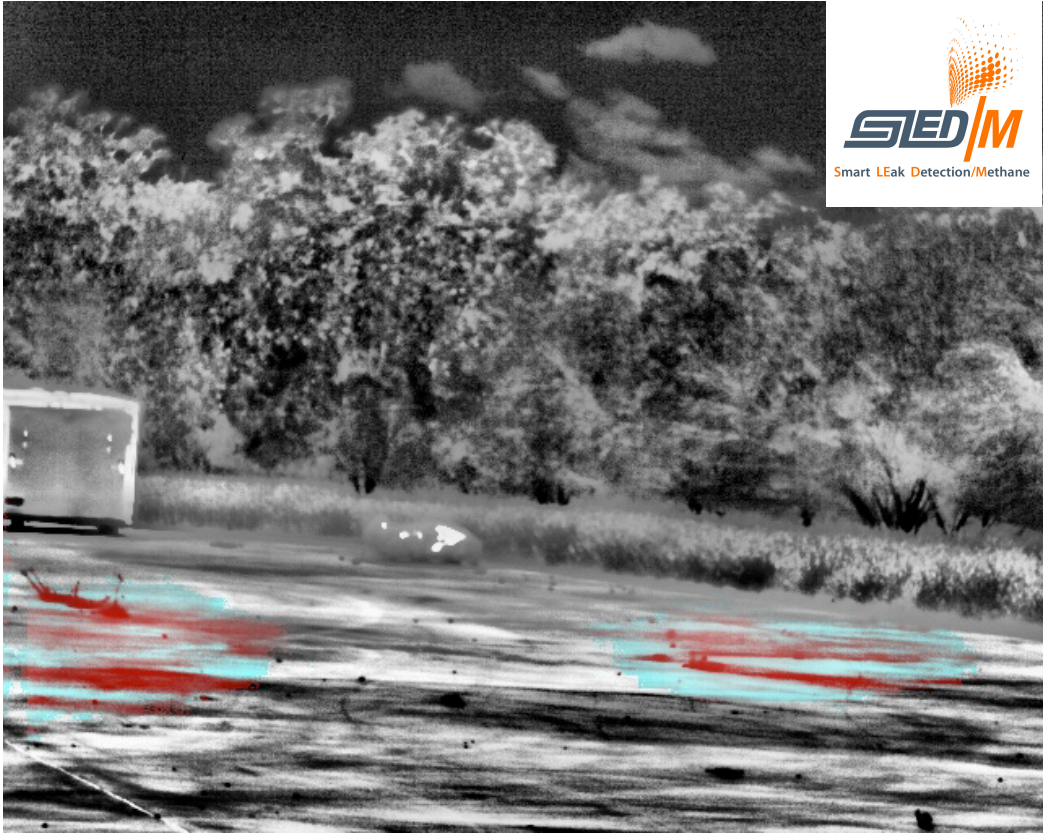
Patent Pending

ADVANCED SCIENCE. APPLIED TECHNOLOGY.



swri.org

SLED/M™ - Smart Methane LEak Detection System

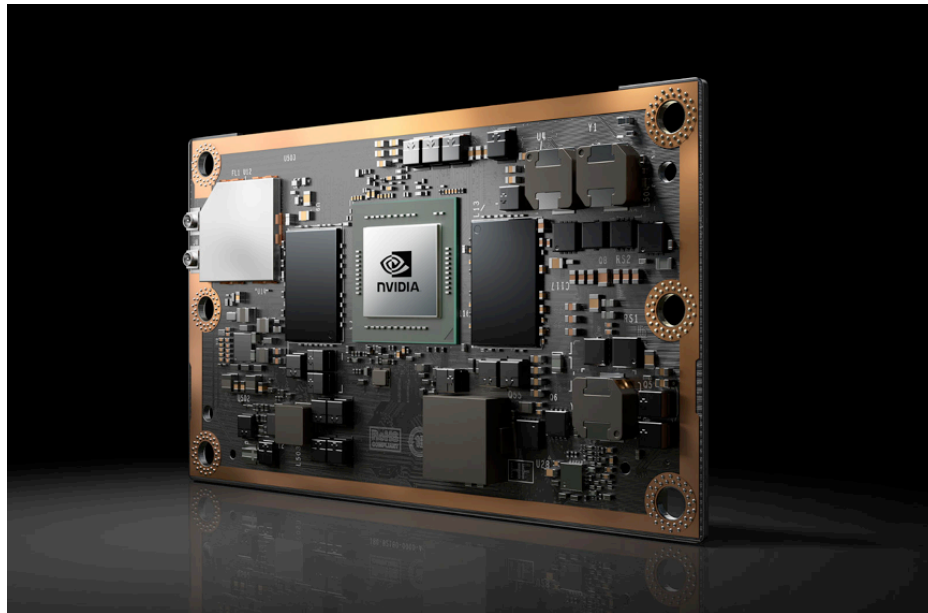


SLED/M™ - Smart Methane LEak Detection System



SLED/M™ Operates at the Edge

- SLED/M™ detects gases in less than 2 seconds at the edge



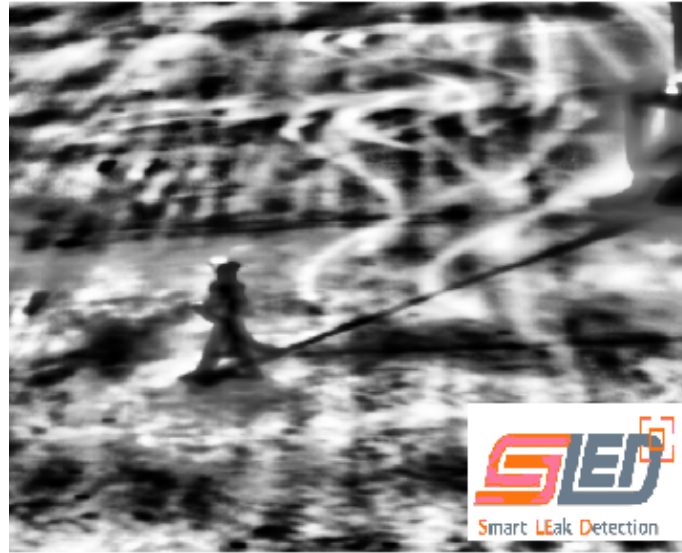
Combating Sources of False Positives SLED/M™



U.S. DEPARTMENT OF ENERGY



People



Motion



Dust



U.S. DEPARTMENT OF ENERGY



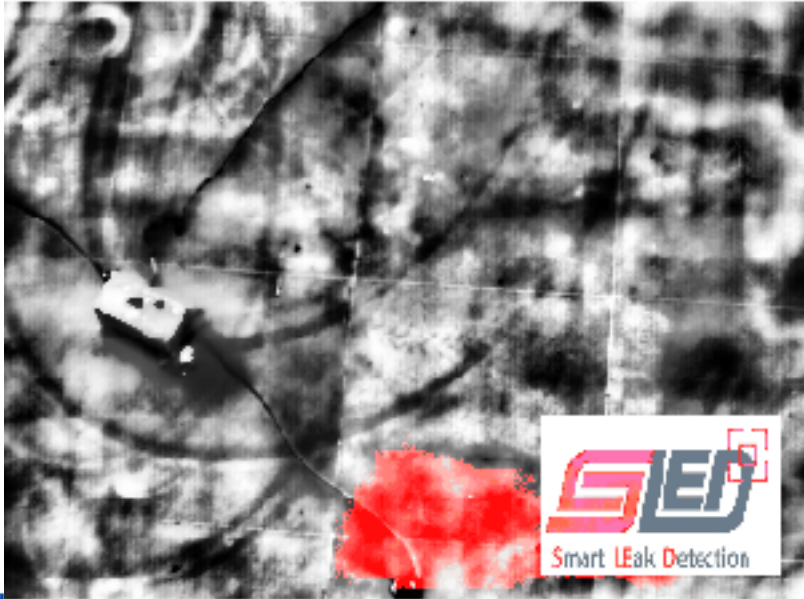
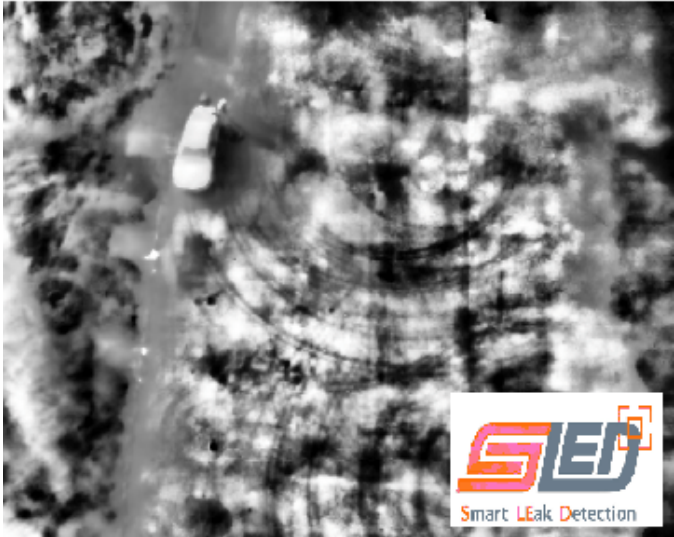
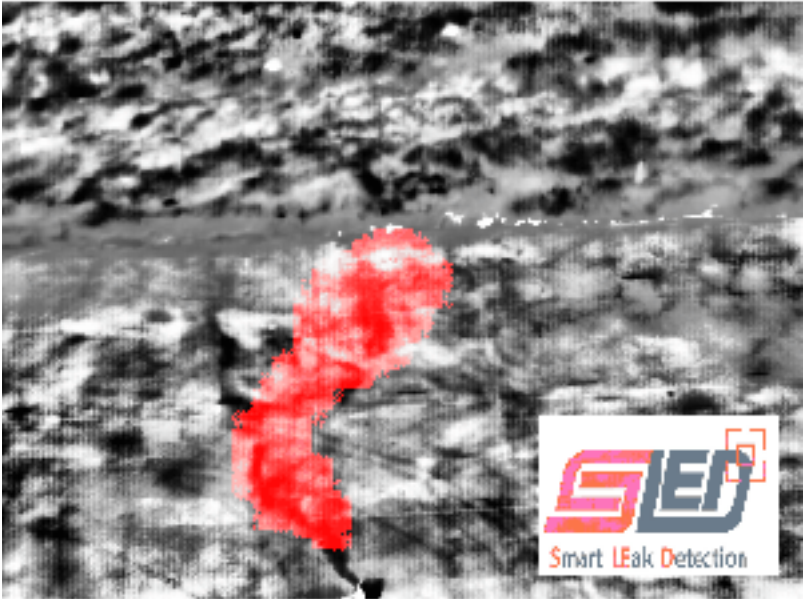
NATIONAL ENERGY TECHNOLOGY LABORATORY

Patent Pending



ADVANCED SCIENCE. APPLIED TECHNOLOGY.

Drone-based Operations





U.S. DEPARTMENT OF
ENERGY



NATIONAL
ENERGY
TECHNOLOGY
LABORATORY



Smart LEak Detection

Questions?



ADVANCED SCIENCE. APPLIED TECHNOLOGY.