

Site Background

The site of the former Norwood Landfill is located in a suburban residential neighborhood in lower Norwood, Delaware County, Pennsylvania. The site is bordered by the Norwood Borough Park to the northeast; wooded areas and Muckinipattis Creek to the east; and wooded areas and Darby Creek to the south (see map on the back). In September 2016, the Agency for Toxic Substances and Disease Registry (ATSDR) informed EPA that community members near the site were concerned with possible contamination and health impacts from the historic unregulated waste disposal practices in the area.

What Has EPA Done to Investigate the Former Landfill?

EPA initiated a site assessment in February 2017 through the Superfund Program to determine if there is a threat posed to human health and the environment by actual or potential releases of hazardous substances and if there is a need for additional action. In September 2017, EPA collected surface and subsurface soil samples within the landfill area and adjacent to residential properties, as well as surface water and sediment samples in the Muckinipattis and Darby Creeks. Samples were analyzed for volatile organic compounds (VOCs), semi-volatile organic compounds (SVOCs), polycyclic aromatic hydrocarbons (PAHs), pesticides, polychlorinated biphenyls (PCBs), metals and mercury.

In May 2018, EPA performed additional surface soil sampling at residential properties adjacent to the landfill.

Sampling results identified varying levels of contamination in the surface and subsurface soils of the landfill area. However, based on current data, contamination found on residential properties or in the surface water or sediments of the adjacent water bodies does not appear to be attributable to the landfill.

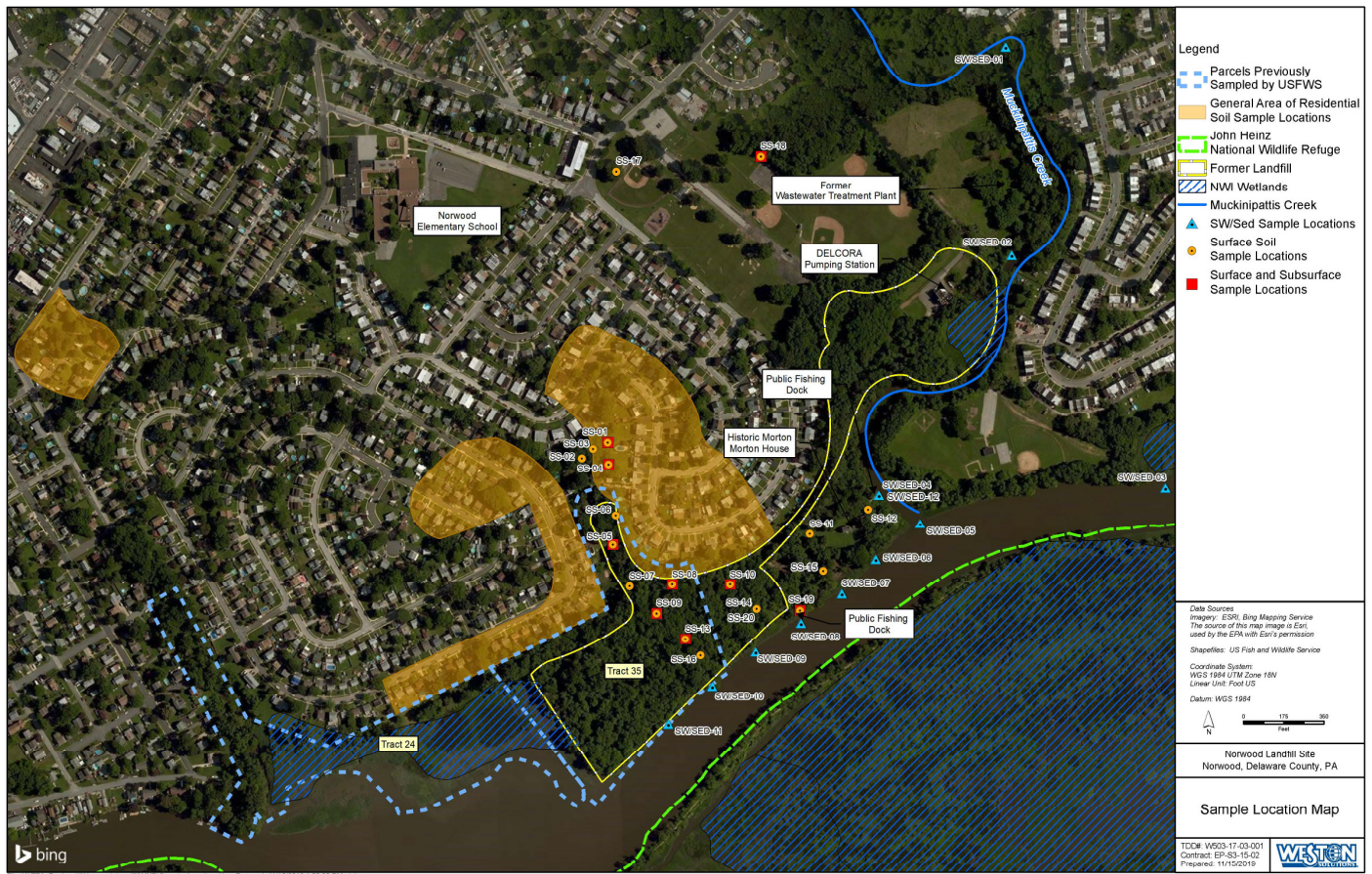
What's Next?

EPA recently reviewed additional historic aerial photographs and newspaper archives. The information indicates an approximate 10-acre area along Muckinipattis Creek, at the eastern end of Norwood Borough Park, that may have also been used for waste disposal.

EPA will conduct additional sampling in this area in early 2020 to determine if contaminants are present in the soil and if they may be migrating to surface water bodies. A final site assessment should be completed by the end of 2020. EPA will continue to work alongside community members to inform them of future next steps until and after the final site assessment is completed.

Additionally, ATSDR and the Pennsylvania Department of Health (PADOH) will complete a public health consultation report in 2020 based on the residential soil data that will include community concerns.

NORWOOD LANDFILL SITE - SAMPLE LOCATION MAP



This map depicts the boundaries of the Norwood Landfill site in yellow outline and includes the locations of where soil samples were collected from the landfill; the general area where soil samples were collected from residential properties; and the locations of where surface water and sediment samples were collected from Darby and Muckinipattis Creeks.

For Site Assessment Questions, Contact:

Joseph Vitello
 EPA Site Assessment Manager
 215-814-3354
vitello.joseph@epa.gov

Larry Brown
 EPA Community Involvement Coordinator
 215-814-5527
brown.larry@epa.gov

For Health-Related Questions, Contact:

Karl V. Markiewicz, PhD
 Senior Toxicologist, ATSDR
 215-814-3149
kvm4@cdc.gov

Bevin S. Durant Fidler, MPH
 PADOH
 717-787-3350
bdurantfid@pa.gov