



United States Department of Agriculture



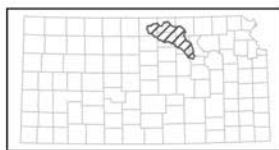
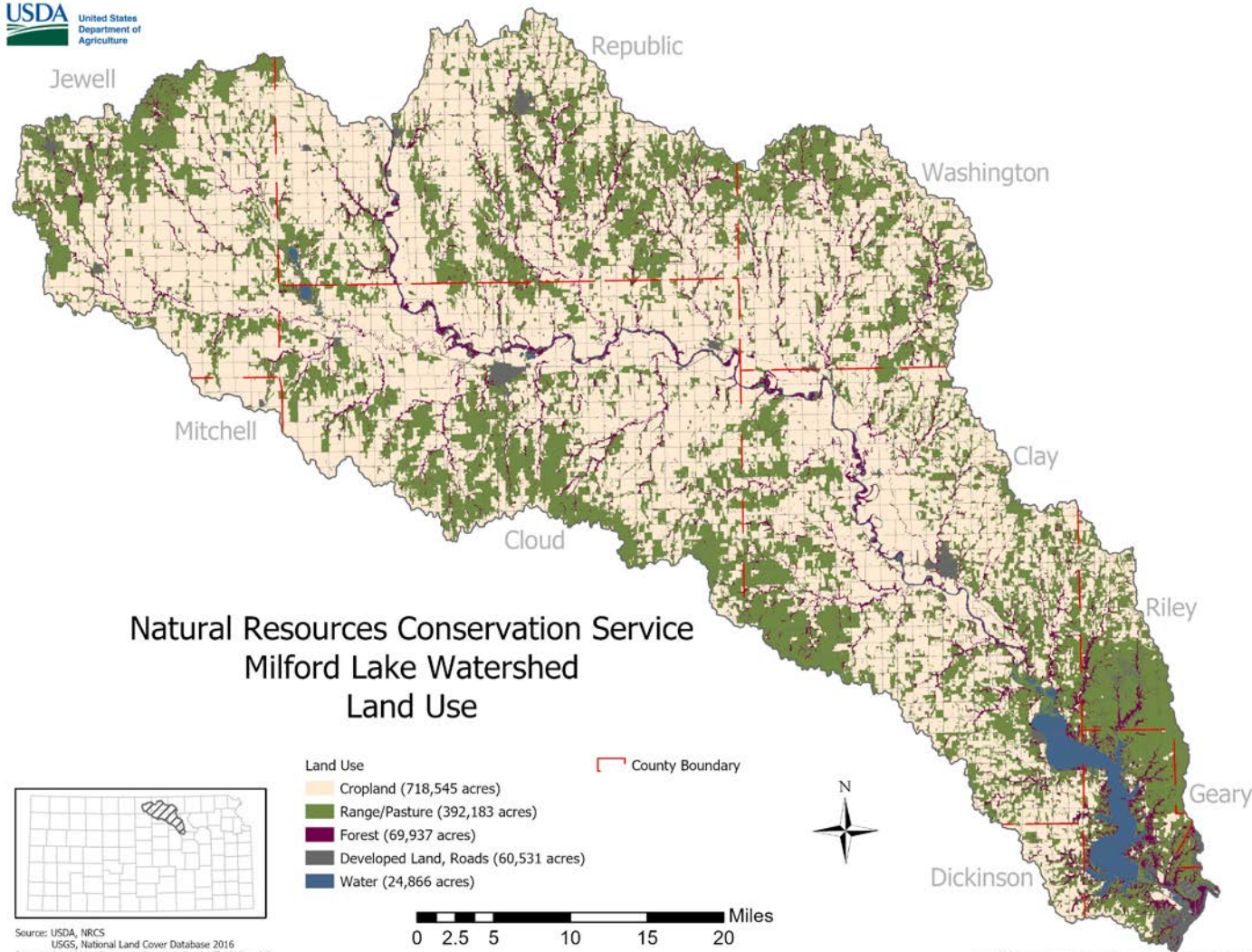
## Milford Lake Watershed Conservation Accomplishments



Natural  
Resources  
Conservation  
Service

[nrcs.usda.gov/](https://nrcs.usda.gov/)

# Milford Lake Watershed – Land Use



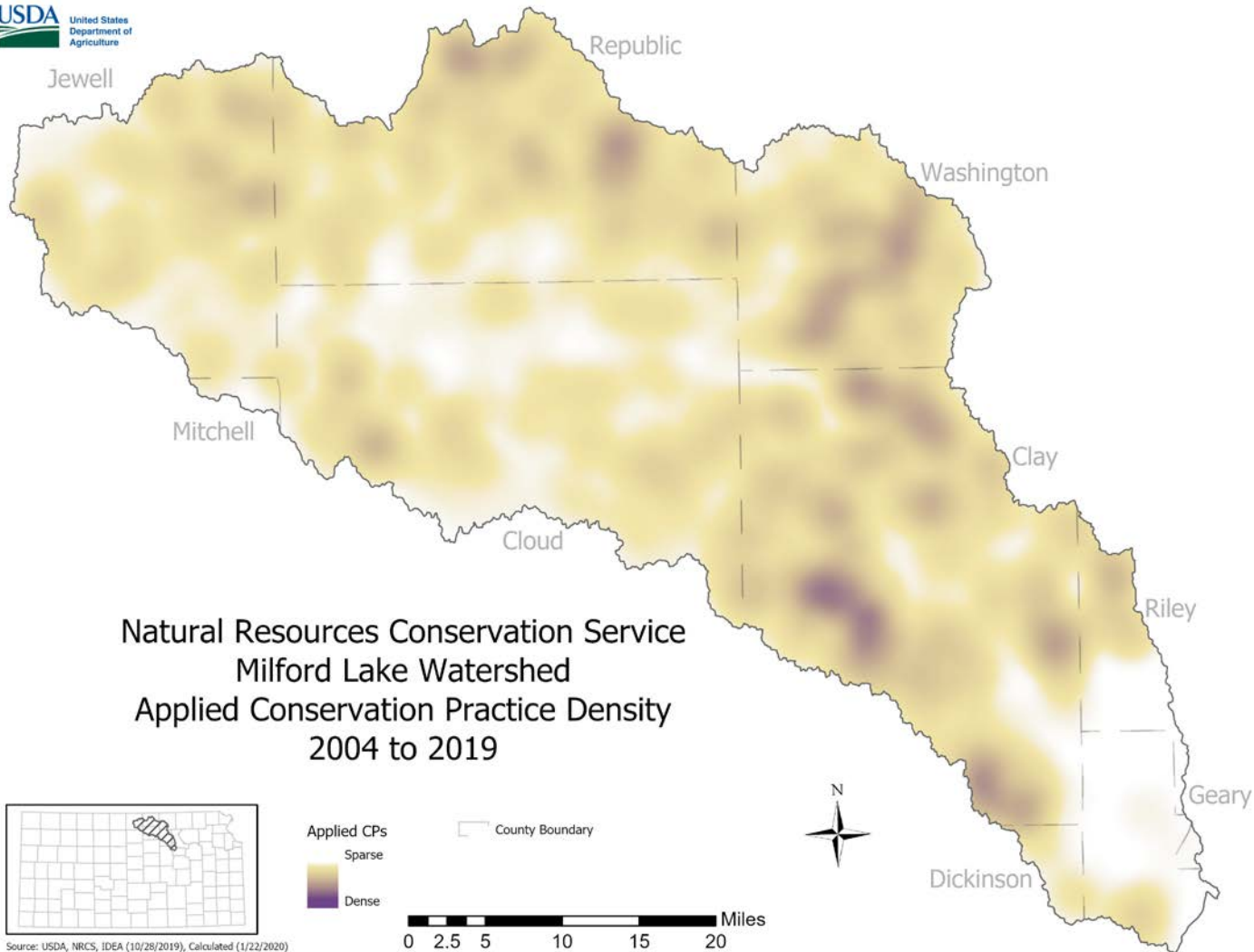
Source: USDA, NRCS  
USGS, National Land Cover Database 2016  
January 24, 2020 - Resource Conservation Staff - Sallina, KS

Natural Resources Conservation Service

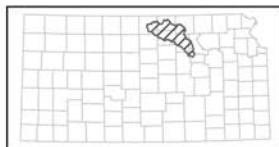
[nrcs.usda.gov/](http://nrcs.usda.gov/)



# Applied Conservation Practices (2004 – 2019)



Natural Resources Conservation Service  
Milford Lake Watershed  
Applied Conservation Practice Density  
2004 to 2019



Source: USDA, NRCS, IDEA (10/28/2019), Calculated (1/22/2020)  
January 24, 2020 - Resource Conservation Staff - Salina, KS

Applied CPs  
Sparse  
Dense  
County Boundary

0 2.5 5 10 15 20 Miles



Natural Resources Conservation Service

The USDA is an equal opportunity provider, employer, and lender.

[nrcs.usda.gov/](http://nrcs.usda.gov/)



# Applied Conservation Practices (2004 – 2019)



## Conservation Technical Assistance (CTA)

Practice	Applied		
	Instances	Amount	Units
313 Waste Storage Facility	6	6	No
317 Composting Facility	1	1	No
328 Conservation Crop Rotation	3,754	148,775	Ac
329 Residue and Tillage Management, No Till	1,650	67,786	Ac
330 Contour Farming	194	8,847	Ac
332 Contour Buffer Strips	2	10	Ac
340 Cover Crop	44	1,204	Ac
342 Critical Area Planting	196	285	Ac
345 Residue and Tillage Management, Reduced Till	316	13,259	Ac
359 Waste Treatment Lagoon	2	2	No
386 Field Border	3	4	Ac
	3	3,700	Ft
391 Riparian Forest Buffer	3	9	Ac
393 Filter Strip	6	7	Ac
410 Grade Stabilization Structure	5	5	No
412 Grassed Waterway	604	820	Ac
449 Irrigation Water Management	50	3,571	Ac
472 Access Control	136	1,834	Ac
528 Prescribed Grazing	241	21,731	Ac
561 Heavy Use Area Protection	4	0.4	Ac
	2	264	SqFt
590 Nutrient Management	661	24,383	Ac
600 Terrace	489	1,442,896	Ft
612 Tree/Shrub Establishment	9	12	Ac
634 Waste Transfer	3	3	No
638 Water and Sediment Control Basin	1	1	No
<b>Total</b>	<b>8,385</b>	-	-

## Environmental Quality Incentives Program (EQIP)

Practice	Applied		
	Instances	Amount	Units
313 Waste Storage Facility	6	6	No
316 Animal Mortality Facility	1	1	No
327 Conservation Cover	2	1	Ac
329 Residue and Tillage Management, No Till	154	5,424	Ac
340 Cover Crop	3	147	Ac
342 Critical Area Planting	188	485	Ac
360 Waste Facility Closure	1	1	No
410 Grade Stabilization Structure	2	2	No
412 Grassed Waterway	198	289	Ac
449 Irrigation Water Management	12	770	Ac
472 Access Control	22	800	Ac
528 Prescribed Grazing	277	24,278	Ac
590 Nutrient Management	474	16,453	Ac
600 Terrace	200	601,245	Ft
612 Tree/Shrub Establishment	1	0.2	Ac
634 Waste Transfer	7	7	No
638 Water and Sediment Control Basin	2	2	No
<b>Total</b>	<b>1,550</b>	-	-

## Financial Assistance FY 2004 – 2019\*

- Contracts: 261
- Payments: \$2,452,729

\*Data includes EQIP, RCPP, and WHIP.  
Does not include CSP.



# Applied Conservation Practices (2004 – 2019)

## Regional Conservation Partnership Program (RCPP)

Practice	Applied		
	Instances	Amount	Units
472 Access Control	1	15.6	Ac
528 Prescribed Grazing	2	296.2	Ac
<b>Total</b>	<b>3</b>	<b>311.8</b>	<b>-</b>

## Wildlife Habitat Incentives Program (WHIP)

Practice	Applied		
	Instances	Amount	Units
340 Cover Crop	2	3.5	Ac
342 Critical Area Planting	2	1.7	Ac
412 Grassed Waterway	2	2	Ac
600 Terrace	2	7086	Ft
612 Tree/Shrub Establishment	12	9.6	Ac
<b>Total</b>	<b>20</b>	<b>-</b>	<b>-</b>

## Grassland Reserve Program (GRP)

Practice	Applied		
	Instances	Amount	Units
528 Prescribed Grazing	16	1,347	Ac

## Conservation Reserve Program (CRP)

Practice	Applied		
	Instances	Amount	Units
340 Cover Crop	375	4,003	Ac
342 Critical Area Planting	5	13	Ac
386 Field Border	28	97	Ac
	60	125,113	Ft
391 Riparian Forest Buffer	13	53	Ac
393 Filter Strip	181	414	Ac
412 Grassed Waterway	5	10	Ac
472 Access Control	1,283	21,075	Ac
528 Prescribed Grazing	43	822	Ac
590 Nutrient Management	1	28	Ac
612 Tree/Shrub Establishment	14	4	Ac
638 Water and Sediment Control Basin	1	1	No
<b>Total</b>	<b>2,009</b>	<b>-</b>	<b>-</b>

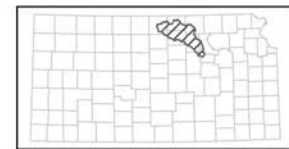
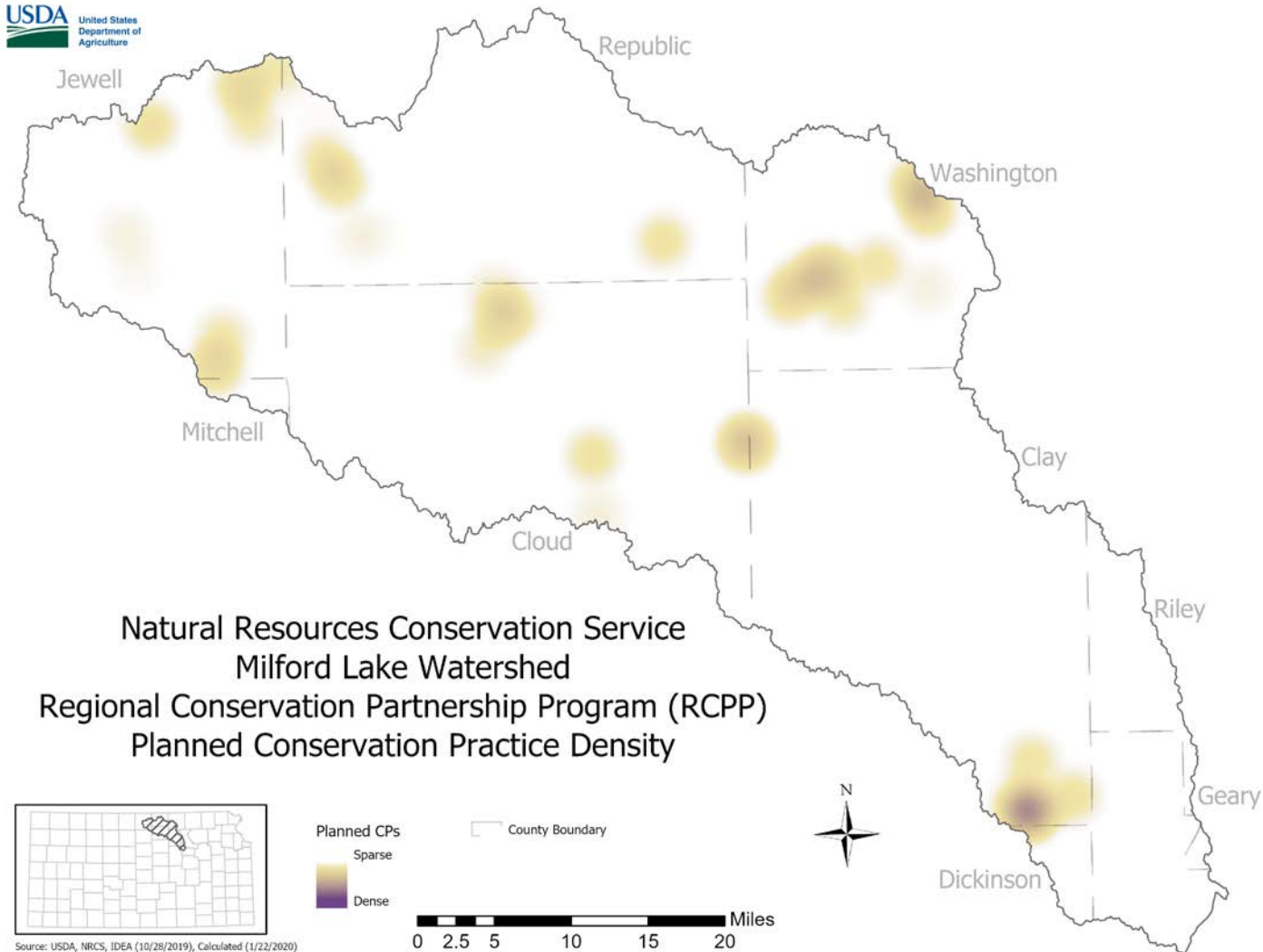
## Financial Assistance FY 2004 – 2019\*

- Contracts: 261
- Payments: \$2,452,729

\*Data includes EQIP, RCPP, and WHIP.  
Does not include CSP.



# Planned Conservation Practices – Milford RCPP



Source: USDA, NRCS, IDEA (10/28/2019), Calculated (1/22/2020)  
January 24, 2020 - Resource Conservation Staff - Salina, KS

The USDA is an equal opportunity provider, employer, and lender.

Natural  
Resources  
Conservation  
Service

[nrcs.usda.gov/](https://nrcs.usda.gov/)



# Planned Conservation Practices – Milford RCPP

## RCPP - Water Quality in Milford Lake Watershed in Kansas

Practice	Planned		Units
	Instances	Amount	
340 Cover Crop	231	7,336	Ac
342 Critical Area Planting	21	23	Ac
362 Diversion	9	12,581	Ft
378 Pond	2	2	No
382 Fence	6	21,429	Ft
412 Grassed Waterway	20	14	Ac
466 Land Smoothing	2	2	Ac
512 Forage and Biomass Planting	3	74	Ac
516 Livestock Pipeline	1	2,050	Ft
528 Prescribed Grazing	30	2,851	Ac
590 Nutrient Management	361	12,451	Ac
600 Terrace	9	18,200	Ft
<b>Total</b>	<b>695</b>	-	-

## Financial Assistance Obligations

- Contracts: 19
- Payments: \$1,114,450





## USDA's Nondiscrimination Statement

### **Non-Discrimination Statement**

#### **Non-Discrimination Policy**

In accordance with Federal civil rights law and U.S. Department of Agriculture (USDA) civil rights regulations and policies, the USDA, its Agencies, offices, and employees, and institutions participating in or administering USDA programs are prohibited from discriminating based on race, color, national origin, religion, sex, gender identity (including gender expression), sexual orientation, disability, age, marital status, family/parental status, income derived from a public assistance program, political beliefs, or reprisal or retaliation for prior civil rights activity, in any program or activity conducted or funded by USDA (not all bases apply to all programs). Remedies and complaint filing deadlines vary by program or incident.

#### **Persons with Disabilities**

Persons with disabilities who require alternative means of communication for program information (e.g., Braille, large print, audiotape, American Sign Language, etc.) should contact the responsible Agency or USDA's TARGET Center at (202) 720-2600 (voice and TTY) or contact USDA through the Federal Relay Service at (800) 877-8339. Additionally, program information may be made available in languages other than English.

#### **To File a Program Discrimination Complaint**

To file a program discrimination complaint, complete the USDA Program Discrimination Complaint Form, AD-3027, found online at [How to File a Program Discrimination Complaint](#) and at any USDA office or write a letter addressed to USDA and provide in the letter all of the information requested in the form. To request a copy of the complaint form, call (866) 632-9992. Submit your completed form or letter to USDA by:

- (1) mail: U.S. Department of Agriculture  
Office of the Assistant Secretary for Civil Rights  
1400 Independence Avenue, SW  
Washington, D.C. 20250-9410;
- (2) fax: (202) 690-7442; or
- (3) email: [program.intake@usda.gov](mailto:program.intake@usda.gov).

USDA is an equal opportunity provider, employer, and lender.

