

EPA, ORD, AED San Juan Research



Alana Hanson and Autumn Oczkowski
Narragansett, RI

What we've done

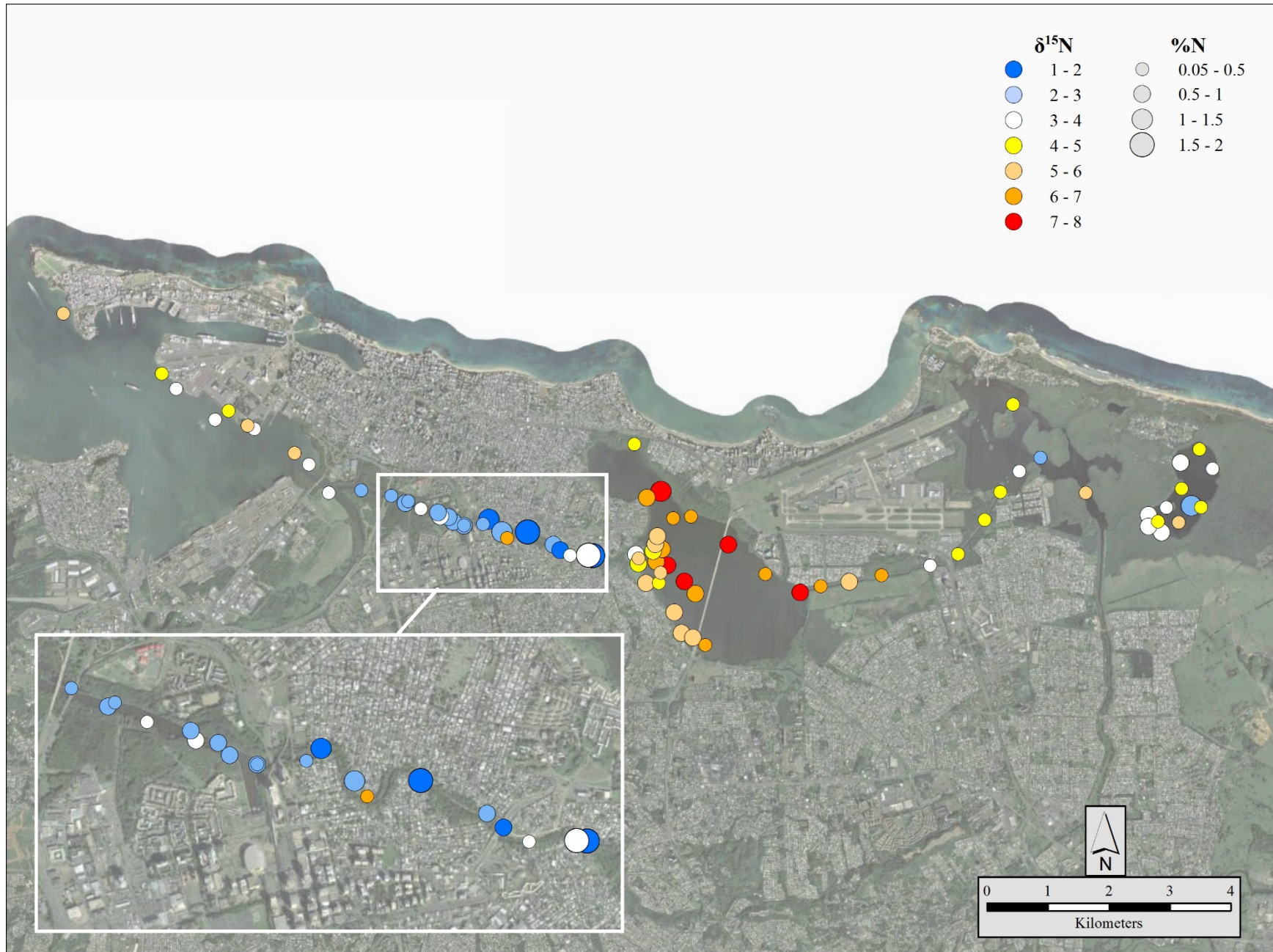
- Three trips to San Juan
- Meetings, establishing collaborations
- Collected surface sediment, fish, shellfish, leaves, and sediment cores.

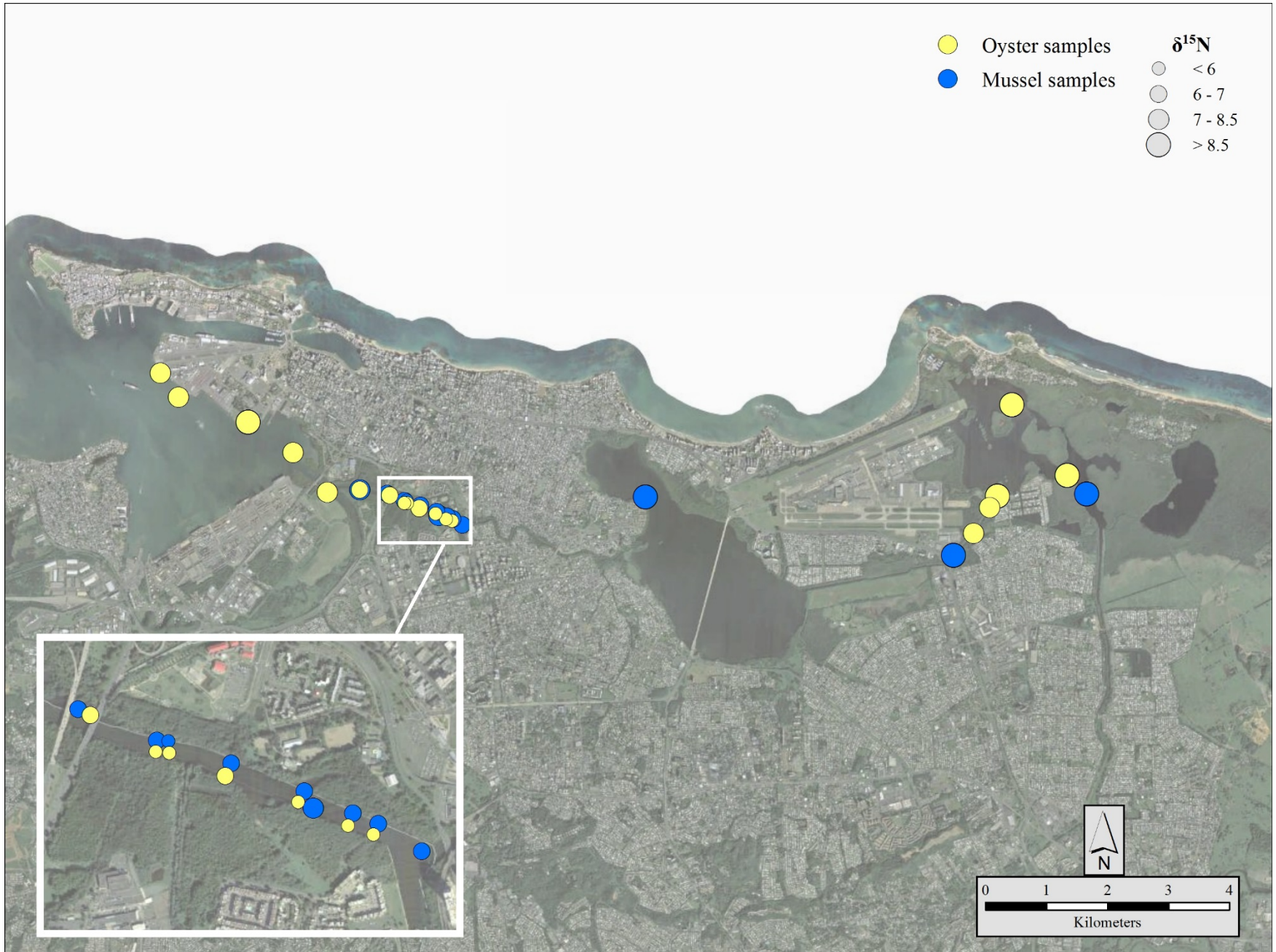




Urban Sampling







Analytical Work

Done:

- Sediment isotopes, %N & %C
- Sediment LOI (organic matter & carbonate)
- Fish, shellfish, and mangrove isotopes and N&C content
- Sediment phosphorous content
- Sediment grain size



March 2016 Sampling

Final thoughts

- New collaborations with Ben Branoff, Juan Alvarez, and Hamlet Perez.
- How to address the low isotope values in the Martin Peña? (Phase II research question)
- What other samples should we be collecting before the dredging?
- New water budget?