



Summary Report
U.S. Environmental Protection Agency (EPA) and
Louisiana Department of Environmental Quality (LDEQ)
Air Monitoring for Chloroprene Concentrations
near the Denka Performance Elastomer LLC (DPE) Facility
in LaPlace, Louisiana
May 25, 2016 through July 16, 2020
September 2020

SUMMARY REPORT

Air Monitoring for Chloroprene Concentrations in LaPlace, LA from May 25, 2016 through July 16, 2020

EXECUTIVE SUMMARY

The U.S. Environmental Protection Agency (EPA) and the Louisiana Department of Environmental Quality (LDEQ) began ambient air monitoring in the LaPlace, LA, community surrounding the Denka Performance Elastomer, LLC (DPE) facility in March 2016. Since March 2018, following the implementation of emission controls being installed by DPE, chloroprene stack emissions have been reduced by 85% and EPA air monitoring data have shown corresponding significant reductions of chloroprene concentrations in the community.

The air monitoring program was implemented in response to the 2011 National Air Toxics Assessment (which was released in late December 2015) to determine if modeled concentrations of chloroprene in the air were present at levels of concern. EPA established six monitoring locations in LaPlace in May 2016 and began sampling each location to monitor and analyze concentrations of chloroprene in the air near the DPE facility.

Chloroprene is one of the 187 pollutants that Congress classified as “hazardous air pollutants,” also called air toxics. The Clean Air Act instructs EPA to regulate air toxics by setting limits on the amount of air pollution that industrial sources can *emit* to the air, rather than by setting *ambient standards*, which are limits on the amount of a pollutant that is allowed in outdoor air.

Air monitoring of chloroprene has allowed EPA and LDEQ to document the reductions in chloroprene levels in the community due to emission reductions at the facility. EPA noted that the post-control data collected between March 2018 to July 2020 indicated that annual averages in the community would be lower except for occasional elevated measurements, or “spikes,” that contribute to the averages. In order to understand the magnitude and frequency of these occasional, but recurring, elevated chloroprene measurements or “spikes,” EPA began a Continuous Air Monitoring Program in March 2020.

The Continuous Air Monitoring Program is designed to measure short-term concentrations of chloroprene and provide important additional information to help identify potential opportunities to further reduce chloroprene emissions. The Continuous Air Monitoring Program, barring unforeseen circumstances, will operate until December 2020.

In addition to EPA’s Continuous Air Monitoring Program, DPE has conducted their own air monitoring for chloroprene at six locations in LaPlace. Based on our analysis, DPE’s air monitoring data results have generally tracked well when compared to EPA’s monitoring data. DPE has committed to continue their air monitoring efforts in the community through calendar year 2021.

BACKGROUND

The U.S. Environmental Protection Agency’s (EPA) National Air Toxics Assessment (NATA), released on December 17, 2015 using the 2011 national emissions inventory, is a nationwide screening-level computer modeling assessment. The model estimated high levels of chloroprene in the community of LaPlace, LA.

At the time of the NATA release, these levels of chloroprene were predicted by the model, but not confirmed by air monitoring results to actually be present in the community. To determine if the chloroprene levels of concern were present in the ambient air, EPA and the Louisiana Department of Environmental Quality (LDEQ) conducted preliminary air monitoring in the community.

LDEQ conducted an initial air monitoring survey on six days between March 1 through March 10, 2016. LDEQ collected 25 short-term grab samples from different locations in the community of LaPlace. The sampling results detected chloroprene and indicated a need to determine if chloroprene was in the ambient air over longer periods of time.

During the same period, EPA collected a total of 20 samples, up to 24-hours in duration, from five different locations within the community of LaPlace. EPA's sampling results confirmed LDEQ's findings and the need for additional air monitoring in the community.

EPA began monitoring for chloroprene in the neighborhoods near the Denka Performance Elastomers (DPE) Pontchartrain Facility (formerly the DuPont Neoprene Facility, Pontchartrain Works) in May 2016. The purpose of the monitoring was to collect air samples to assist in EPA's assessment of the presence of chloroprene in the community. To communicate information to the community during the monitoring period, EPA provided individual sample results at each site throughout the monitoring period at the following website: <https://www.epa.gov/la/denka-air-monitoring-data-summary>. The monitoring data summarized in this report covered the period from May 25, 2016 to July 16, 2020 and are included as an attachment to this document.

Beginning on May 25, 2016, EPA collected samples every third day at six monitoring sites. Beginning on March 1, 2019, the sample collection frequency became every sixth day. The sample collection duration is 24 consecutive hours. For data quality purposes, EPA collected one additional, collocated sample at one of the six monitoring sites. The collocated sample location was selected on the day of sampling based on the predicted direction of the winds for that day of sampling. A map of the EPA community air monitoring locations is below.

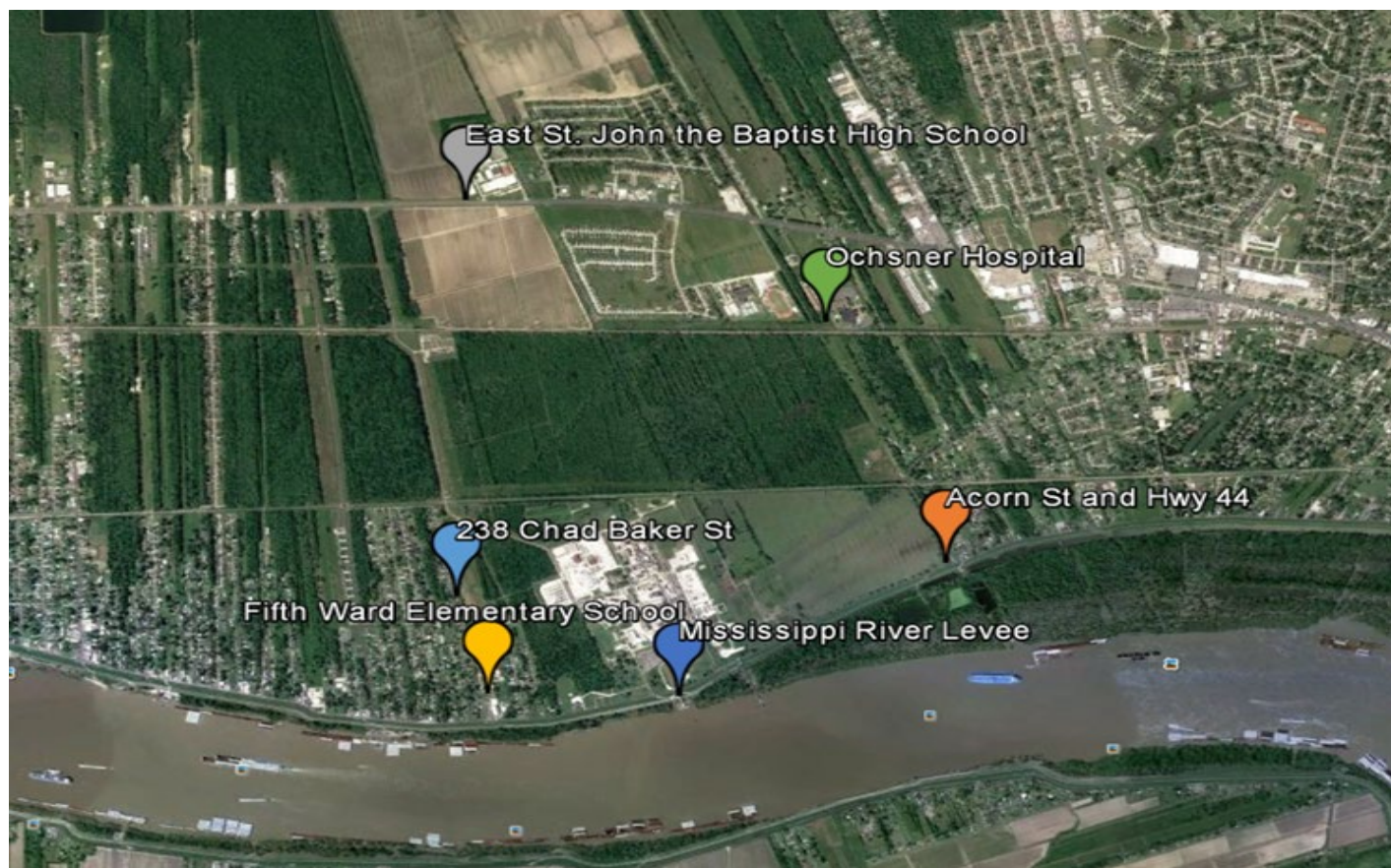


Figure 1. EPA Community Ambient Air Monitoring Locations, LaPlace, LA

DATA SUMMARY

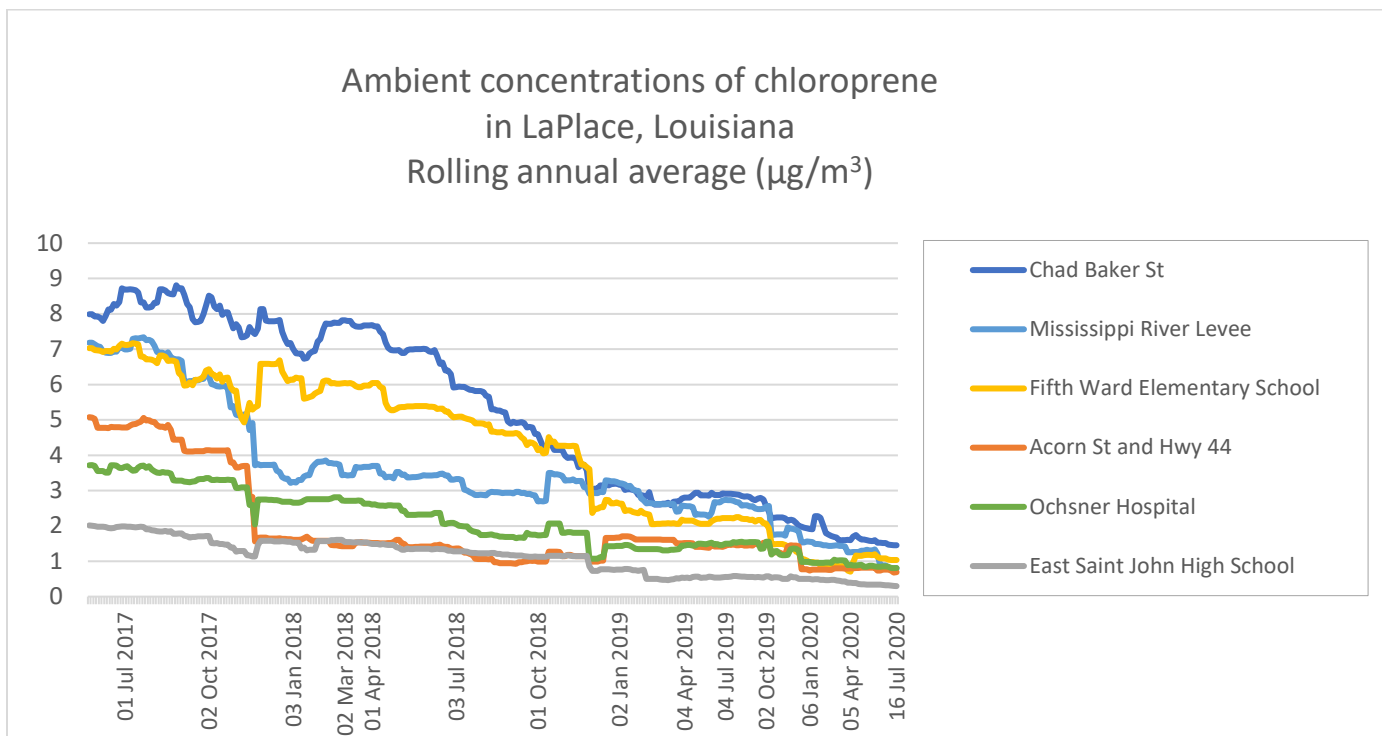
LDEQ has been actively working with EPA and officials from DPE to address the chloroprene issues in LaPlace, Louisiana. LDEQ staff met with DPE officials and requested that the company develop and implement a monitoring plan and develop actions to reduce emissions.

LDEQ's Agreed Order on Consent issued to DPE resulted in the facility completing four major construction projects by December 2017 to control chloroprene emissions. This included the installation of a regenerative thermal oxidizer (RTO), two condensers, and equipment upgrades and controls for vents and fugitive emissions to reduce emissions of chloroprene. All of these chloroprene emission control measures became fully operational by March 2018.

From May 2016 to March 2018, the daily chloroprene levels at each of the monitors were higher than daily levels after March 2018, when the new chloroprene emission controls at the facility were fully implemented, indicating that the emission controls were effective in reducing the facility's chloroprene emissions.

The chart below shows a "rolling annual average" at each monitoring site. A "rolling annual average" takes the sample results for the 12 months before a sampling day, averages them, and places that value as a data point on the chart. With every next sampling day, those 12 months "roll" or move forward, to capture the 12 months before that day, the results are averaged, and this value is shown as the next data point.

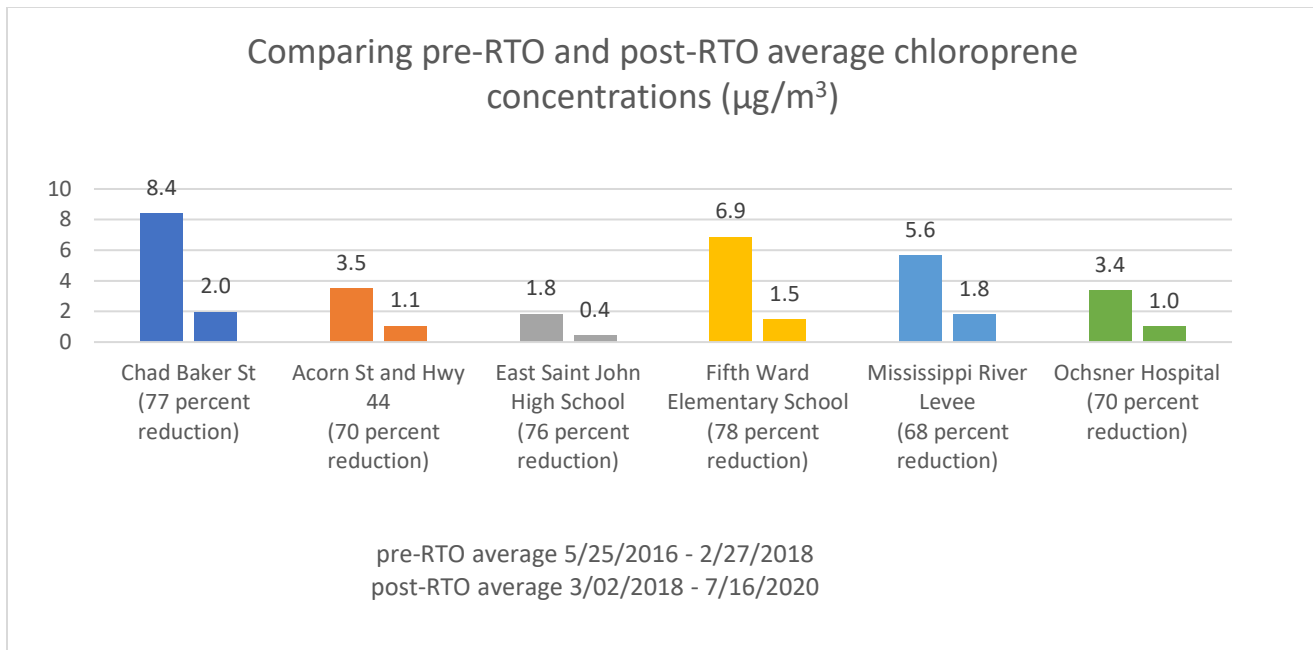
The highest annual rolling averages are in the time period before the implementation of additional emission controls at the facility in March 2018. The rolling annual averages drop consistently at all six air monitoring sites from March 2018 to July 2020.



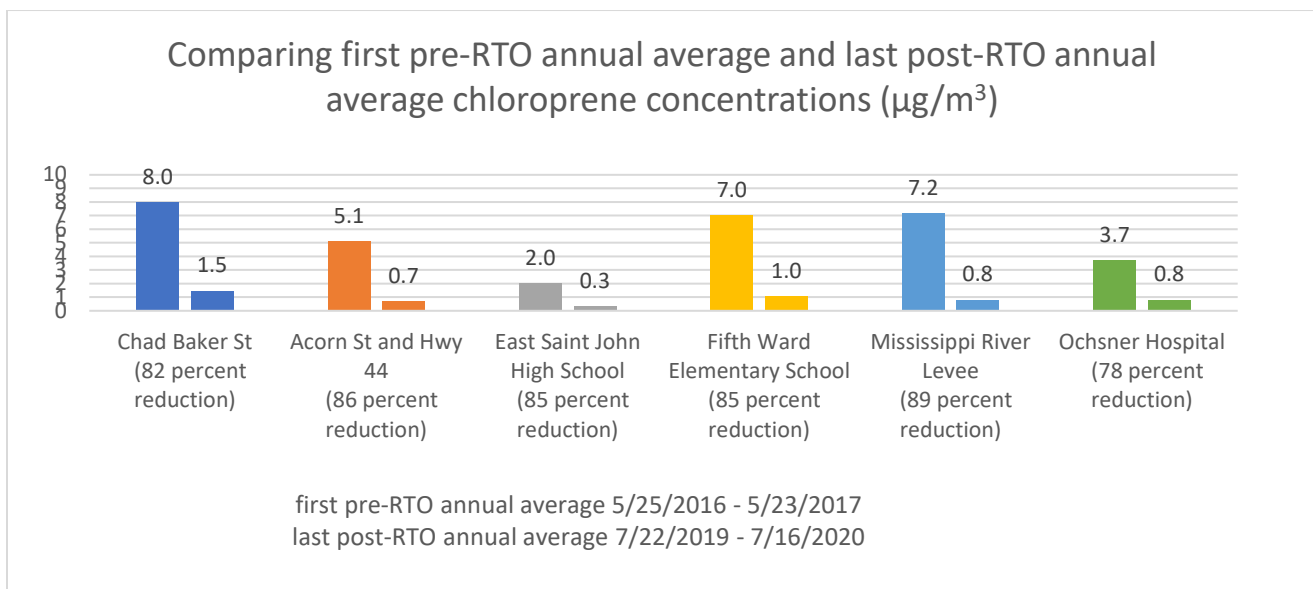
Since March 2018, air sampling results have shown a substantial reduction in chloroprene emissions at all monitoring locations. The last of the chloroprene emission control devices to become fully operational (in March 2018) was an RTO. The latest annual chloroprene emissions inventory data reported by DPE, based on 2019 data, reflect an emission reduction of 85% compared to 2014 emissions inventory data.

To illustrate how the reduction of chloroprene emissions at the facility resulted in lower levels of chloroprene in the air surrounding the facility, the average chloroprene levels detected by the community air monitors before (pre) and after (post) the full operation of the RTO in March 2018 were compared. As shown in the chart below,

there has been a 68% to 78% drop in average chloroprene concentrations at the monitors in the community surrounding the facility.



A comparison of the annual rolling averages in the time periods before (pre) and after (post) full operation of the RTO shows even larger chloroprene concentration decreases of the pre- and post-RTO operation at every EPA community air monitoring site around the facility. The percent average decrease in annual average rolling concentrations at the community monitoring sites ranged from 78% to 89%.



DATA QUALITY

EPA is confident in the data quality of the sample analysis results for the entire duration of this monitoring effort. Field sampling checks and calibration targets, as well as laboratory analytical quality assurance and control measures, were met for all the EPA community air monitoring data posted to the EPA LaPlace website.

For data quality purposes, EPA collected one collocated sample at one of the six community monitoring sites. Collocated sample results provide assurance that measured chloroprene levels are accurate and comparable.

EPA completed quality control reviews of the raw sample data results to assure they met EPA air sampling quality goals. These additional reviews further confirmed EPA's confidence in the identification and quantitation of the chloroprene results from the EPA air monitoring sites in the community surrounding the DPE facility.

COMPARISON OF EPA COMMUNITY AIR MONITORING TO DPE AIR MONITORING

DPE has conducted their own air monitoring for chloroprene at the following locations in LaPlace, shown on Figure 2.

1. Entergy Site
2. Railroad & Highway 44
3. Western Edge of DPE Property
4. Mississippi River Levee
5. Ochsner River Parishes Hospital
6. Edgard

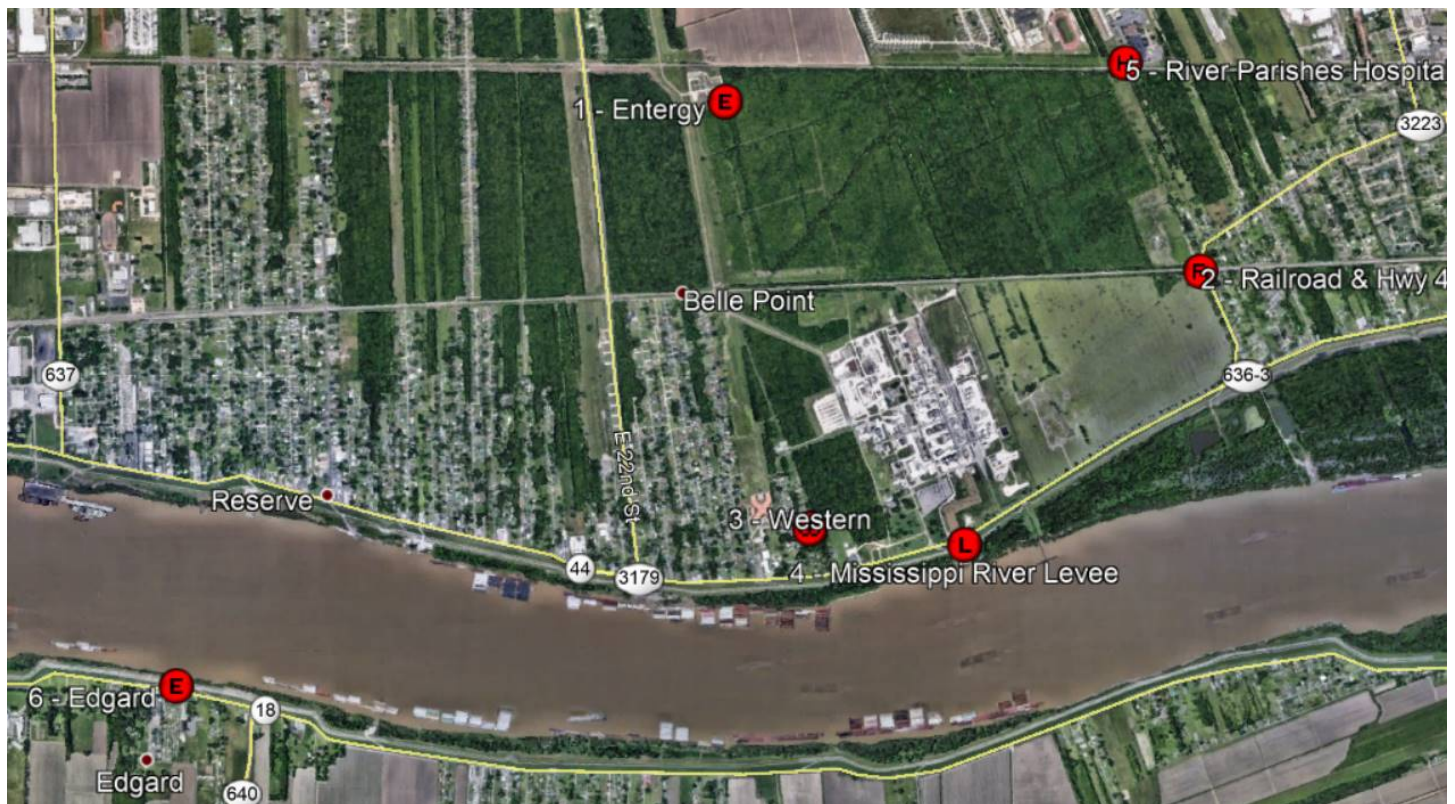


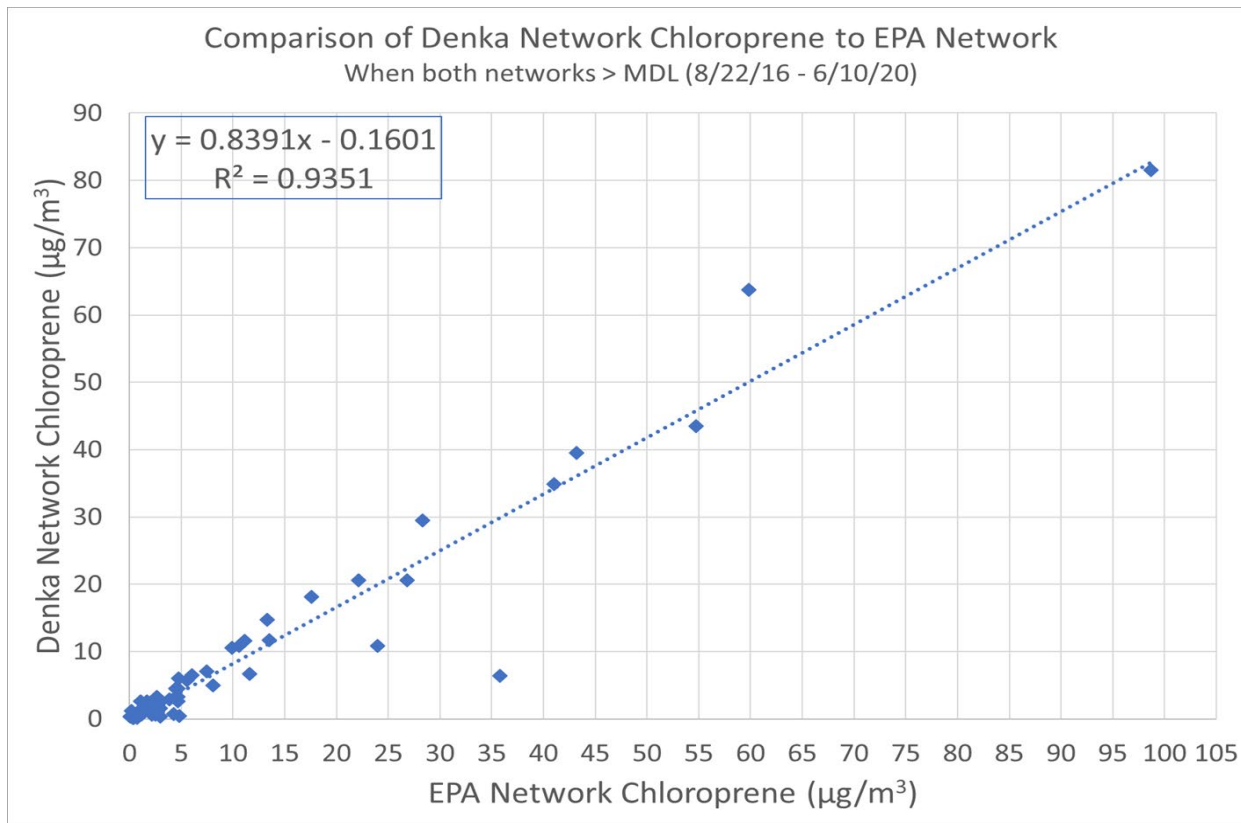
Figure 2. DPE Air Monitoring Locations, LaPlace, LA

EPA compared the EPA community monitoring data and the DPE monitoring data. The charts below compare the EPA and DPE results from the Levee and Hospital sampling sites. EPA chose to compare these two

locations because the EPA and DPE monitoring equipment at the sites are the most closely located. The sample results being compared from both monitoring networks are from the same site and have the same start day.

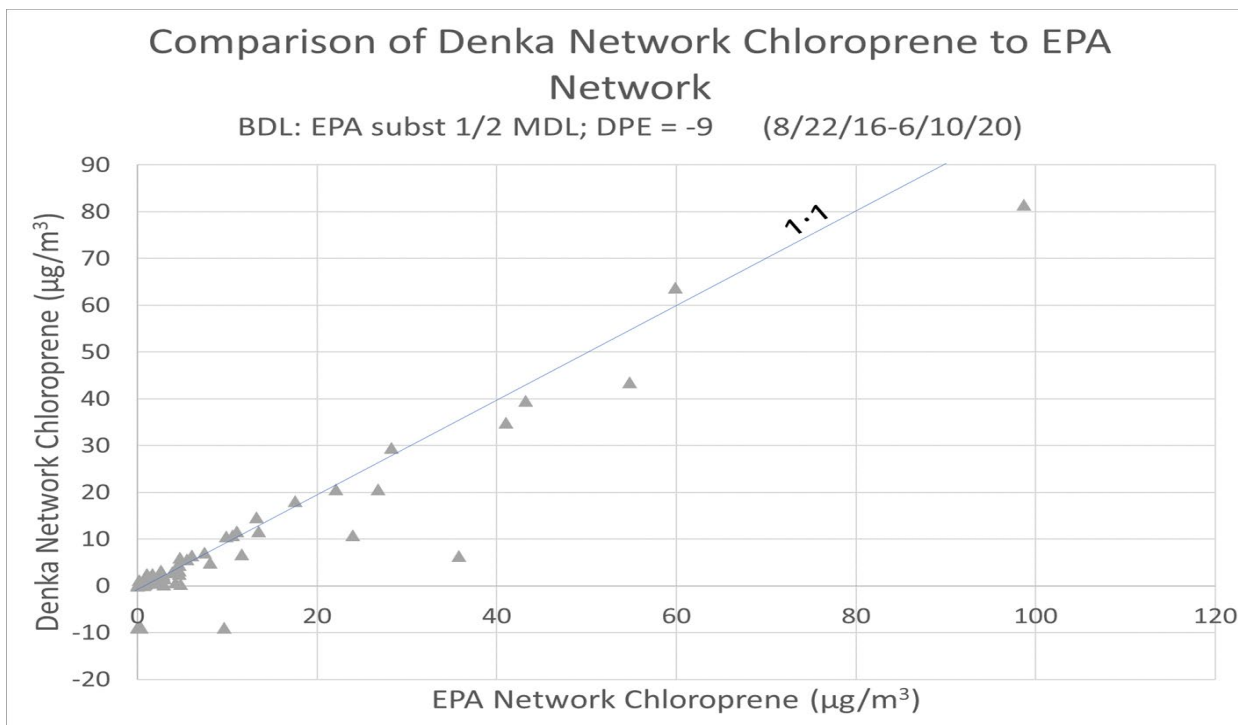
The first comparison is for days when both EPA and DPE monitoring results are greater than the minimum detection limit (MDL) of the respective sample analytical methods being used. In other words, the comparison occurs when both networks have sampling results on the same day at these two sites.

As can be seen in the following chart, the chloroprene air sampling results from both the EPA and DPE air monitoring networks are well correlated. A correlation factor equal to 1 is ideal. In this case, a factor of 0.9351 is very good. Also, in general, the closer the points in the chart are to the dashed line, the closer the two sets of sample results track. Stated simply, the results from the two sites, one EPA and one DPE, are comparable.



A second comparison, illustrated in the chart that follows, looks at sample results when the DPE sampling result was below the analytical method MDL but for which a sample result could be estimated. This comparison was done to see if the corresponding EPA sample result at the same site and on the same day is also relatively low.

The closer the points in the chart are to the solid line, the closer the two sets of sample results correlate. As seen in the chart below, at these lower chloroprene levels, which are more typical in the current post-RTO time frame, the air sampling results from both the EPA and DPE air monitoring networks are again comparable.



Based on our analysis, DPE’s air monitoring data results have generally tracked well when compared to EPA’s community monitoring data. DPE has committed to continue their air monitoring efforts in the community through calendar year 2021.

SUMMARY

Since March 2018, following the implementation of emission controls being installed by DPE, chloroprene emissions have been reduced by 85% and EPA air monitoring data have shown corresponding significant reductions of chloroprene concentrations in the community.

EPA noted that data collected between March 2018 to July 2020 indicated that rolling annual averages in the community would be lower except for occasional elevated measurements, or “spikes,” that contribute to the averages. In order to understand the magnitude and frequency of these occasional, but recurring, elevated chloroprene measurements or “spikes,” EPA began a Continuous Air Monitoring Program in March 2020.

The Continuous Air Monitoring Program is designed to measure short-term concentrations of chloroprene and provide important additional information to help identify potential opportunities to further reduce chloroprene emissions. The Continuous Air Monitoring Program, barring unforeseen circumstances, will operate until December 2020. This data will be posted on the following EPA website as it becomes available:
<https://www.epa.gov/la/denka-air-monitoring-data-summary>.

Attachment: EPA Community Air Monitoring Data Results May 25, 2016 through July 16, 2020

**EPA Chloroprene Community Air Monitoring Summary Sheet
May 25, 2016 - July 16, 2020**

DATE	Units	238 Chad Baker	Acorn and Hwy 44	East St. John the	Fifth Ward Elementar	Levee	Ochsner Hospital
05/25/16	(µg/m ³)	ND	1.29	0.831	ND	ND	ND
05/25/16 (c)	(µg/m ³)	--	--	--	ND	--	--
05/28/16	(µg/m ³)	--	Invalid	Invalid	--	Invalid	--
05/28/16 (c)	(µg/m ³)	--	--	Invalid	--	--	--
05/31/16	(µg/m ³)	7.58	30.3	2.02	3.07	6.13	17.5
05/31/16 (c)	(µg/m ³)	--	--	--	--	--	--
06/02/16	(µg/m ³)	7.15	0.073	2.67	1.88	2.64	0.083
06/02/16 (c)	(µg/m ³)	--	--	--	--	--	0.047
06/05/16	(µg/m ³)	11.1	ND	0.341	4.97	20.5	0.809
06/05/16 (c)	(µg/m ³)	--	ND	--	--	--	--
06/09/16	(µg/m ³)	5.48	0.624	1.25	3.41	4.93	4.68
06/09/16 (c)	(µg/m ³)	--	--	--	--	4.72	--
06/12/16	(µg/m ³)	5.37	0.983	5.15	0.573	0.272	1.28
06/12/16 (c)	(µg/m ³)	--	--	5.73	--	--	--
06/15/16	(µg/m ³)	1.21	0.225	1.07	1.74	0.366	10.8
06/15/16 (c)	(µg/m ³)	--	--	0.990	--	--	--
06/18/16	(µg/m ³)	7.87	4.39	0.268	1.89	2.70	2.98
06/18/16 (c)	(µg/m ³)	--	4.21	--	--	--	--
06/21/16	(µg/m ³)	5.08	ND	1.04	1.30	0.413	0.686
06/21/16 (c)	(µg/m ³)	--	--	--	1.49	--	--
06/24/16	(µg/m ³)	0.305	6.82	0.029	ND	0.319	7.54
06/24/16 (c)	(µg/m ³)	--	--	--	--	0.540	--
06/27/16	(µg/m ³)	0.163	1.19	0.417	ND	0.040	1.61
06/27/16 (c)	(µg/m ³)	--	1.19	--	--	--	--
06/30/16	(µg/m ³)	4.53	ND	0.352	3.50	7.15	ND
06/30/16 (c)	(µg/m ³)	4.21	--	--	--	--	--
07/03/16	(µg/m ³)	ND	0.054	1.69	ND	ND	4.28
07/03/16 (c)	(µg/m ³)	--	--	--	--	--	--
07/06/16	(µg/m ³)	ND	ND	0.120	ND	ND	9.61
07/06/16 (c)	(µg/m ³)	--	--	--	--	--	--

EPA Chloroprene Community Air Monitoring Summary Sheet
May 25, 2016 - July 16, 2020

DATE	Units	238 Chad Baker	Acorn and Hwy 44	East St. John the	Fifth Ward Elementar	Levee	Ochsner Hospital	
07/09/16	(µg/m ³)	1.71	4.75	0.762	0.345	1.88	6.02	
07/09/16 (c)	(µg/m ³)	--	--	--	--	--	6.64	
07/12/16	(µg/m ³)	6.89	1.23	2.36	5.62	0.722	0.232	
07/12/16 (c)	(µg/m ³)	--	--	2.70	--	--	--	
07/15/16	(µg/m ³)	12.4	0.881	0.914	3.63	6.46	1.53	
07/15/16 (c)	(µg/m ³)	--	--	--	--	--	1.73	
07/18/16	(µg/m ³)	37.0	ND	0.276	44.3	1.70	ND	
07/18/16 (c)	(µg/m ³)	33.2	--	--	--	--	--	
07/21/16	(µg/m ³)	5.01	1.18	2.12	11.3	4.90	1.06	
07/21/16 (c)	(µg/m ³)	--	--	--	11.3	--	--	
07/24/16	(µg/m ³)	16.7	9.07	8.16	8.09	9.47	10.0	
07/24/16 (c)	(µg/m ³)	--	--	--	--	10.0	--	
07/27/16	(µg/m ³)	ND	1.71	0.196	ND	ND	3.59	
07/27/16 (c)	(µg/m ³)	--	--	--	--	--	3.70	
07/30/16	(µg/m ³)	2.49	5.30	2.67	3.15	6.35	11.2	
07/30/16 (c)	(µg/m ³)	--	--	--	--	--	10.8	
08/02/16	(µg/m ³)	0.254	0.881	1.86	10.3	16.8	6.56	
08/02/16 (c)	(µg/m ³)	--	--	--	--	--	5.95	
08/05/16	(µg/m ³)	5.84	12.5	2.39	8.67	21.4	5.48	
08/05/16 (c)	(µg/m ³)	--	12.7	--	--	--	--	
08/08/16	(µg/m ³)	0.417	4.86	1.63	0.569	2.77	0.827	
08/08/16 (c)	(µg/m ³)	--	5.98	--	--	--	--	
08/11/16	(µg/m ³)	ND	12.8	ND	ND	0.649	2.43	
08/11/16 (c)	(µg/m ³)	--	--	--	--	--	2.23	
08/14/16	(µg/m ³)	Invalid	Invalid	Invalid	Invalid	Invalid	Invalid	
08/14/16 (c)	(µg/m ³)							
08/17/16	(µg/m ³)	No Samples Collected Due to Flooding in the Area						
08/17/16 (c)	(µg/m ³)	No Samples Collected Due to Flooding in the Area						
08/20/16	(µg/m ³)	No Samples Collected Due to Flooding in the Area						
08/20/16 (c)	(µg/m ³)	No Samples Collected Due to Flooding in the Area						

EPA Chloroprene Community Air Monitoring Summary Sheet
May 25, 2016 - July 16, 2020

DATE	Units	238 Chad Baker	Acorn and Hwy 44	East St. John the	Fifth Ward Elementar	Levee	Ochsner Hospital
08/23/16	(µg/m ³)	5.19	34.7	8.56	--	--	24.0
08/23/16 (c)	(µg/m ³)	--	--	--	--	--	23.0
08/26/16	(µg/m ³)	1.61	0.468	0.301	6.06	2.23	1.37
08/26/16 (c)	(µg/m ³)	1.65	--	--	--	--	--
08/29/16	(µg/m ³)	25.6	ND	0.627	38.4	0.073	ND
08/29/16 (c)	(µg/m ³)	--	--	--	38.8	--	--
09/01/16	(µg/m ³)	0.798	ND	ND	13.1	8.09	ND
09/01/16 (c)	(µg/m ³)	--	--	--	11.0	--	--
09/04/16	(µg/m ³)	31.0	39.2	10.2	34.7	74.7	7.65
09/04/16 (c)	(µg/m ³)	30.7	--	--	--	--	--
09/07/16	(µg/m ³)	Invalid	2.21	2.17	3.44	2.14	1.17
09/07/16 (c)	(µg/m ³)	33.8	--	--	--	--	--
09/10/16	(µg/m ³)	10.9	0.160	4.90	6.27	2.53	0.791
09/10/16 (c)	(µg/m ³)	10.7	--	--	--	--	--
09/13/16	(µg/m ³)	46.1	ND	0.120	16.1	0.232	ND
09/13/16 (c)	(µg/m ³)	44.3	--	--	--	--	--
09/16/16	(µg/m ³)	28.6	ND	0.921	0.693	ND	ND
09/16/16 (c)	(µg/m ³)	24.7	--	--	--	--	--
09/19/16	(µg/m ³)	ND	0.105	0.033	ND	1.320	0.076
09/19/16 (c)	(µg/m ³)	--	--	--	--	--	0.062
09/22/16	(µg/m ³)	0.363	ND	0.065	0.722	0.18	ND
09/22/16 (c)	(µg/m ³)	--	--	--	0.664	--	--
09/25/16	(µg/m ³)	0.109	0.073	0.127	0.105	0.548	ND
09/25/16 (c)	(µg/m ³)	0.138	--	--	--	--	--
09/28/16	(µg/m ³)	0.073	0.432	0.051	0.555	3.37	0.301
09/28/16 (c)	(µg/m ³)	--	--	--	--	3.49	--
10/01/16	(µg/m ³)	0.051	ND	ND	ND	10.3	ND
10/01/16 (c)	(µg/m ³)	--	--	--	--	10.6	--
10/04/16	(µg/m ³)	37.4	1.27	24.9	42.4	26.8	6.06
10/04/16 (c)	(µg/m ³)	--	--	--	33.3	--	--

**EPA Chloroprene Community Air Monitoring Summary Sheet
May 25, 2016 - July 16, 2020**

DATE	Units	238 Chad Baker	Acorn and Hwy 44	East St. John the	Fifth Ward Elementar	Levee	Ochsner Hospital
10/07/16	(µg/m ³)	32.8	0.403	1.37	5.77	4.24	0.704
10/07/16 (c)	(µg/m ³)		--	--	5.73	--	--
10/10/16	(µg/m ³)	8.49	ND	ND	12.5	8.74	ND
10/10/16 (c)	(µg/m ³)	--	--	--	12.6	--	--
10/13/16	(µg/m ³)	18.8	ND	3.57	1.76	1.27	0.258
10/13/16 (c)	(µg/m ³)	--	--	--	1.7	--	--
10/16/16	(µg/m ³)	32.3	ND	ND	25.6	3.33	ND
10/16/16 (c)	(µg/m ³)	31.6	--	--	--	--	--
10/19/16	(µg/m ³)	12.1	ND	1.70	0.232	ND	ND
10/19/16 (c)	(µg/m ³)	11.9	--	--	--	--	--
10/22/16	(µg/m ³)	0.410	ND	ND	ND	13.5	0.073
10/22/16 (c)	(µg/m ³)	--	--	--	--	9.68	--
10/25/16	(µg/m ³)	29.8	57.3	12.0	33.0	67.5	43.5
10/25/16 (c)	(µg/m ³)	--	--	--	--	65.3	--
10/28/16	(µg/m ³)	25.0	ND	0.07	11.1	11.9	ND
10/28/16 (c)	(µg/m ³)	--	--	--	11.9	--	--
10/31/16	(µg/m ³)	5.04	17.5	16.2	1.96	29.6	27.5
10/31/16 (c)	(µg/m ³)	--	--	--	1.99	--	--
11/03/16	(µg/m ³)	18.8	ND	ND	66.4	2.30	ND
11/03/16 (c)	(µg/m ³)	18.9	--	--	--	--	--
11/06/16	(µg/m ³)	32.6	0.54	0.102	28.9	3.12	0.120
11/06/16 (c)	(µg/m ³)	35.1	--	--	--	--	--
11/09/16	(µg/m ³)	0.921	ND	ND	16.4	ND	ND
11/09/16 (c)	(µg/m ³)	--	--	--	17.3	--	--
11/12/16	(µg/m ³)	0.221	ND	15.1	2.22	ND	ND
11/12/16 (c)	(µg/m ³)	--	--	--	2.13	--	--
11/15/16	(µg/m ³)	ND	106	0.268	ND	54.8	59.8
11/15/16 (c)	(µg/m ³)	--	--	--	ND	--	--
11/18/16	(µg/m ³)	16.9	0.827	3.61	23.4	0.210	0.831
11/18/16 (c)	(µg/m ³)	--	--	3.40	--	--	--
11/21/16	(µg/m ³)	8.27	153	0.388	1.60	147	66.7
11/21/16 (c)	(µg/m ³)	--	--	--	1.61	--	--
11/24/16	(µg/m ³)	2.81	5.66	0.870	1.02	17.1	3.77

EPA Chloroprene Community Air Monitoring Summary Sheet
May 25, 2016 - July 16, 2020

DATE	Units	238 Chad Baker	Acorn and Hwy 44	East St. John the	Fifth Ward Elementar	Levee	Ochsner Hospital
11/24/16 (c)	(µg/m3)	--	--	--	--	--	3.74
11/27/16	(µg/m3)	3.74	0.025	ND	5.40	4.90	0.018
11/27/16 (c)	(µg/m3)	--	--	--	5.08	--	--
11/30/16	(µg/m3)	0.018	0.025	0.058	0.025	0.802	0.218
11/30/16 (c)	(µg/m3)	--	--	0.062	--	--	--
12/03/16	(µg/m3)	40.6	0.044	ND	0.979	ND	ND
12/03/16 (c)	(µg/m3)	41.0	--	--	--	--	--
12/06/16	(µg/m3)	2.42	3.41	0.413	0.635	0.029	0.787
12/06/16 (c)	(µg/m3)	--	3.55	--	--	--	--
12/09/16	(µg/m3)	ND	ND	ND	0.433	0.537	ND
12/09/16 (c)	(µg/m3)	--	--	--	0.450	--	--
12/12/16	(µg/m3)	ND	0.196	2.41	ND	0.381	2.44
12/12/16 (c)	(µg/m3)	--	--	2.36	--	--	--
12/15/16	(µg/m3)	ND	ND	ND	0.025	21.3	ND
12/15/16 (c)	(µg/m3)	--	--	--	0.029	--	--
12/18/16	(µg/m3)	ND	ND	ND	ND	8.81	2.22
12/18/16 (c)	(µg/m3)	--	--	ND	--	--	--
12/21/16	(µg/m3)	40.3	1.71	0.889	37.4	17.4	3.21
12/21/16 (c)	(µg/m3)	--	--	--	39.9	--	--
12/24/16	(µg/m3)	26.2	ND	0.820	20.9	10.6	ND
12/24/16 (c)	(µg/m3)	25.5	--	--	--	--	--
12/27/16	(µg/m3)	17.1	0.649	1.11	16.7	0.812	0.232
12/27/16 (c)	(µg/m3)	16.2	--	--	--	--	--
12/30/16	(µg/m3)	3.18	ND	ND	4.82	17.6	ND
12/30/16 (c)	(µg/m3)	--	--	--	--	Invalid	--
01/02/17	(µg/m3)	19.5	3.06	2.93	0.664	ND	2.76
01/02/17 (c)	(µg/m3)	--	--	--	--	--	2.88
01/05/17	(µg/m3)	33.2	ND	0.577	17.5	4.68	ND
01/05/17 (c)	(µg/m3)	--	--	--	Invalid	--	--
01/08/17	(µg/m3)	1.28	ND	ND	1.81	Invalid	ND
01/08/17 (c)	(µg/m3)	--	--	--	--	Invalid	--
01/11/17	(µg/m3)	ND	ND	20.3	0.033	0.029	0.083
01/11/17 (c)	(µg/m3)	--	--	20.5	--	--	--
01/14/17	(µg/m3)	20.0	ND	ND	75.1	0.381	ND
01/14/17 (c)	(µg/m3)	--	--	--	75.1	--	--
01/17/17	(µg/m3)	ND	0.036	11.0	ND	0.036	0.522
01/17/17 (c)	(µg/m3)	--	--	10.7	--	--	--

EPA Chloroprene Community Air Monitoring Summary Sheet
May 25, 2016 - July 16, 2020

DATE	Units	238 Chad Baker	Acorn and Hwy 44	East St. John the	Fifth Ward Elementar	Levee	Ochsner Hospital
01/20/17	(µg/m3)	ND	7.76	0.145	ND	ND	1.78
01/20/17 (c)	(µg/m3)	--	--	--	--	--	1.99
01/23/17	(µg/m3)	ND	6.09	ND	ND	ND	0.022
01/23/17 (c)	(µg/m3)	--	6.13	--	--	--	--
01/26/17	(µg/m3)	ND	ND	ND	ND	0.939	0.297
01/26/17 (c)	(µg/m3)	--	--	--	--	--	0.297
01/29/17	(µg/m3)	ND	0.352	ND	ND	ND	ND
01/29/17 (c)	(µg/m3)	--	0.352	--	--	--	--
02/01/17	(µg/m3)	ND	ND	0.051	ND	ND	0.051
02/01/17 (c)	(µg/m3)	--	--	--	--	--	0.054
02/04/17	(µg/m3)	0.058	ND	ND	0.141	0.203	ND
02/04/17 (c)	(µg/m3)	--	--	--	0.174	--	--
02/07/17	(µg/m3)	ND	ND	0.087	ND	ND	0.051
02/07/17 (c)	(µg/m3)	--	--	0.087	--	--	--
02/10/17	(µg/m3)	1.32	ND	0.022	1.15	9.68	ND
02/10/17 (c)	(µg/m3)	1.40	--	--	--	--	--
02/13/17	(µg/m3)	0.316	14.2	ND	8.56	0.656	0.040
02/13/17 (c)	(µg/m3)	--	--	--	8.92	--	--
02/16/17	(µg/m3)	0.073	2.69	ND	0.218	2.62	ND
02/16/17 (c)	(µg/m3)	--	2.13	--	--	--	--
02/19/17	(µg/m3)	0.551	0.301	0.682	1.740	0.334	0.112
02/19/17 (c)	(µg/m3)	0.805	--	--	--	--	--
02/22/17	(µg/m3)	0.109	1.96	0.047	0.091	3.060	0.160
02/22/17 (c)	(µg/m3)	--	1.90	--	--	--	--
02/25/17	(µg/m3)	ND	0.939	ND	ND	35.80	11.10
02/25/17 (c)	(µg/m3)	--	0.856	--	--	--	--
02/28/17	(µg/m3)	ND	0.265	7.76	ND	ND	1.27
02/28/17 (c)	(µg/m3)	--	--	8.16	--	--	--
03/03/17	(µg/m3)	2.58	ND	ND	1.36	2.25	ND
03/03/17 (c)	(µg/m3)	--	--	--	1.55	--	--
03/06/17	(µg/m3)	ND	ND	0.620	ND	ND	ND
03/06/17 (c)	(µg/m3)	--	--	--	--	--	--
03/09/17	(µg/m3)	14.8	ND	1.44	3.15	0.112	0.047
03/09/17 (c)	(µg/m3)	15.5	--	--	--	--	--
03/12/17	(µg/m3)	5.6	ND	0.076	11.9	0.279	ND
03/12/17 (c)	(µg/m3)	5.3	--	--	--	--	--
03/15/17	(µg/m3)	0.497	0.04	0.025	2.44	2.250	0.025

EPA Chloroprene Community Air Monitoring Summary Sheet
May 25, 2016 - July 16, 2020

DATE	Units	238 Chad Baker	Acorn and Hwy 44	East St. John the	Fifth Ward Elementar	Levee	Ochsner Hospital
03/15/17 (c)	(µg/m3)	--	--	--	--	2.31	--
03/18/17	(µg/m3)	0.152	0.25	2.21	0.022	0.022	0.562
03/18/17 (c)	(µg/m3)	--	--	2.66	--	--	--
03/21/17	(µg/m3)	ND	2.84	ND	0.025	0.022	13.30
03/21/17 (c)	(µg/m3)	--	Invalid	--	--	--	--
03/24/17	(µg/m3)	0.062	0.029	0.178	ND	0.025	0.025
03/24/17 (c)	(µg/m3)	0.116	--	--	--	--	--
03/27/17	(µg/m3)	ND	0.022	4.86	ND	0.022	0.033
03/27/17 (c)	(µg/m3)	--	--	4.72	--	--	--
03/30/17	(µg/m3)	2.67	0.881	2.66	0.283	0.406	2.67
03/30/17 (c)	(µg/m3)	--	--	2.68	--	--	--
04/02/17	(µg/m3)	4.90	ND	ND	0.044	ND	ND
04/02/17 (c)	(µg/m3)	5.080	--	--	--	--	--
04/05/17	(µg/m3)	0.334	0.729	0.210	ND	ND	3.74
04/05/17 (c)	(µg/m3)	--	--	0.174	--	--	--
04/08/17	(µg/m3)	17.3	0.925	3.20	13.7	28.3	1.05
04/08/17 (c)	(µg/m3)	--	--	--	--	--	--
04/11/17	(µg/m3)	8.96	0.029	0.294	3.84		0.036
04/11/17 (c)	(µg/m3)	9.10	--	--	--	--	--
04/14/17	(µg/m3)	24.6	ND	1.35	51.1	12.5	0.218
04/14/17 (c)	(µg/m3)	32.0	--	--	--	--	--
04/17/17	(µg/m3)	18.4	0.029	1.53	17.6	0.120	0.276
04/17/17 (c)	(µg/m3)	Invalid	--	--	--	--	--
04/20/17	(µg/m3)	8.270	ND	0.381	7.620	0.319	0.109
04/20/17 (c)	(µg/m3)	8.960	--	--	--	--	--
04/23/17	(µg/m3)	0.765	0.816	0.102	0.051	10.6	0.232
04/23/17 (c)	(µg/m3)	--	0.943	--	--	--	--
04/26/17	(µg/m3)	0.025	0.029	Invalid	0.054	0.029	2.390
04/26/17 (c)	(µg/m3)	--	--	7.58	--	--	--
04/29/17	(µg/m3)	0.044	0.029	2.19	0.033	0.033	0.029
04/29/17 (c)	(µg/m3)	--	--	2.30	--	--	--
05/02/17	(µg/m3)	9.94	11.5	6.60	4.64	9.90	17.6
05/02/17 (c)	(µg/m3)	--	--	--	--	--	17.6
05/05/17	(µg/m3)	ND	2.81	ND	ND	0.174	0.312
05/05/17 (c)	(µg/m3)	--	--	--	--	0.134	--
05/08/17	(µg/m3)	0.508	11.0	0.297	0.323	9.68	14.9
05/08/17 (c)	(µg/m3)	--	--	--	0.283	--	--

EPA Chloroprene Community Air Monitoring Summary Sheet
May 25, 2016 - July 16, 2020

DATE	Units	238 Chad Baker	Acorn and Hwy 44	East St. John the	Fifth Ward Elementar	Levee	Ochsner Hospital
05/11/17	(µg/m3)	0.729	0.254	2.250	ND	0.022	0.247
05/11/17 (c)	(µg/m3)	--	--	2.540	--	--	--
05/14/17	(µg/m3)	ND	ND	ND	ND	1.22	ND
05/14/17 (c)	(µg/m3)	--	--	--	--	1.22	--
05/17/17	(µg/m3)	ND	ND	0.109	ND	ND	ND
05/17/17 (c)	(µg/m3)	--	--	0.094	--	--	--
05/20/17	(µg/m3)	ND	ND	0.025	ND	ND	0.018
05/20/17 (c)	(µg/m3)	--	--	ND	--	--	--
05/23/17	(µg/m3)	0.098	0.062	ND	ND	ND	0.062
05/23/17 (c)	(µg/m3)	--	--	ND	--	--	--
05/26/17	(µg/m3)	ND	ND	0.054	ND	ND	0.163
05/26/17 (c)	(µg/m3)	--	--	0.051	--	--	--
05/29/17	(µg/m3)	0.395	0.134	0.323	0.323	1.48	0.725
05/29/17 (c)	(µg/m3)	--	--	0.316	--	--	--
06/01/17	(µg/m3)	7.73	0.214	0.109	2.06	0.366	0.102
06/01/17 (c)	(µg/m3)	7.94	--	--	--	--	--
06/04/17	(µg/m3)	2.57	0.943	2.56	0.116	0.479	0.751
06/04/17 (c)	(µg/m3)	--	--	2.63	--	--	--
06/07/17	(µg/m3)	0.872	ND	ND	1.180	5.590	ND
06/07/17 (c)	(µg/m3)	--	--	--	1.180	--	--
06/10/17	(µg/m3)	19.7	ND	0.91	6.270	ND	ND
06/10/17 (c)	(µg/m3)	21.9	--	--	--	--	--
06/13/17	(µg/m3)	28.6	ND	1.59	0.823	ND	0.758
06/13/17 (c)	(µg/m3)	28.8	--	--	--	--	--
06/16/17	(µg/m3)	ND	4.82	ND	ND	ND	35.9
06/16/17 (c)	(µg/m3)	--	--	--	--	--	36.2
06/19/17	(µg/m3)	26.7	2.59	1.60	10.7	7.76	2.47
06/19/17 (c)	(µg/m3)	--	--	1.65	--	--	--
06/22/17	(µg/m3)	0.160	ND	4.43	ND	ND	ND
06/22/17 (c)	(µg/m3)	0.192	--	--	--	--	--
06/25/17	(µg/m3)	11.8	7.15	0.61	11.8	13.9	0.384
06/25/17 (c)	(µg/m3)	--	7.54	--	--	--	--
06/28/17	(µg/m3)	45.7	ND	2.14	6.60	0.199	ND
06/28/17 (c)	(µg/m3)	47.9	--	--	--	--	--
07/01/17	(µg/m3)	ND	0.167	ND	ND	ND	4.50
07/01/17 (c)	(µg/m3)	--	--	ND	--	--	--
07/04/17	(µg/m3)	0.058	0.28	ND	ND	ND	6.06

**EPA Chloroprene Community Air Monitoring Summary Sheet
May 25, 2016 - July 16, 2020**

DATE	Units	238 Chad Baker	Acorn and Hwy 44	East St. John the	Fifth Ward Elementar	Levee	Ochsner Hospital
07/04/17 (c)	(µg/m3)	--	--	ND	--	--	--
07/07/17	(µg/m3)	1.42	6.49	0.308	1.65	2.68	0.94
07/07/17 (c)	(µg/m3)	--	--	0.312	--	--	--
07/10/17	(µg/m3)	0.152	8.31	0.083	4.21	34.2	0.334
07/10/17 (c)	(µg/m3)	--	8.27	--	--	--	--
07/13/17	(µg/m3)	4.63	2.40	0.878	3.70	2.81	1.17
07/13/17 (c)	(µg/m3)	Invalid	--	--	--	--	--
07/16/17	(µg/m3)	4.64	5.04	2.73	2.09	5.88	11.2
07/16/17 (c)	(µg/m3)	--	--	3.25	--	--	--
07/19/17	(µg/m3)	1.58	3.55	0.878	3.35	3.81	5.51
07/19/17 (c)	(µg/m3)	--	--	0.921	--	--	--
07/22/17	(µg/m3)	5.11	13.9	1.06	10.2	7.00	2.02
07/22/17 (c)	(µg/m3)	--	--	0.820	--	--	--
07/25/17	(µg/m3)	ND	0.929	0.345	ND	0.744	2.73
07/25/17 (c)	(µg/m3)	--	0.892	--	--	--	--
07/28/17	(µg/m3)	ND	1.97	ND	ND	0.087	9.14
07/28/17 (c)	(µg/m3)	--	2.88	--	--	--	--
07/31/17	(µg/m3)	4.28	ND	ND	1.76	2.63	ND
07/31/17 (c)	(µg/m3)	--	--	--	1.65	--	--
08/03/17	(µg/m3)	14.3	ND	0.493	5.55	0.892	ND
08/03/17 (c)	(µg/m3)	14.7	--	--	--	--	--
08/06/17	(µg/m3)	5.51	1.66	0.860	1.70	1.10	0.914
08/06/17 (c)	(µg/m3)	--	--	0.649	--	--	--
08/09/17	(µg/m3)	45.3	0.076	ND	26.2	0.479	ND
08/09/17 (c)	(µg/m3)	45.7	--	--	--	--	--
08/12/17	(µg/m3)	ND	12.3	0.276	0.058	0.736	4.68
08/12/17 (c)	(µg/m3)	--	14.7	--	--	--	--
08/15/17	(µg/m3)	4.24	0.526	3.92	2.45	0.831	1.38
08/15/17 (c)	(µg/m3)	--	--	3.92	--	--	--
08/18/17	(µg/m3)	ND	2.92	0.05	ND	0.461	3.41
08/18/17 (c)	(µg/m3)	--	2.60	--	--	--	--
08/21/17	(µg/m3)	5.77	0.225	2.20	0.613	3.59	0.352
08/21/17 (c)	(µg/m3)	--	--	--	0.591	--	--
08/24/17	(µg/m3)	3.27	0.218	0.033	7.00	1.720	0.776
08/24/17 (c)	(µg/m3)	--	--	--	--	INVALID	--
08/27/17	(µg/m3)	33.3	0.432	0.054	1.16	0.406	0.170
08/27/17 (c)	(µg/m3)	33.7	--	--	--	--	--

EPA Chloroprene Community Air Monitoring Summary Sheet
May 25, 2016 - July 16, 2020

DATE	Units	238 Chad Baker	Acorn and Hwy 44	East St. John the	Fifth Ward Elementar	Levee	Ochsner Hospital
08/30/17	(µg/m3)	13.9	0.025	2.29	0.308	ND	0.094
08/30/17 (c	(µg/m3)	14.0	--	--	--	--	--
09/02/17	(µg/m3)	2.39	0.174	0.07	2.81	2.66	0.127
09/02/17 (c	(µg/m3)	--	0.178	--	--	--	--
09/05/17	(µg/m3)	INVALID	1.15	2.29	0.247	2.15	3.92
09/05/17 (c	(µg/m3)	--	--	--	0.308	--	--
09/08/17	(µg/m3)	1.18	ND	ND	5.01	3.13	ND
09/08/17 (c	(µg/m3)	--	--	--	INVALID	--	--
09/11/17	(µg/m3)	0.029	ND	ND	17.1	4.28	ND
09/11/17 (c	(µg/m3)	--	--	--	14.0	--	--
09/14/17	(µg/m3)	4.94	0.130	2.45	6.57	0.370	1.55
09/14/17 (c	(µg/m3)	--	--	--	--	--	1.73
09/17/17	(µg/m3)	16.2	0.950	1.50	19.0	4.32	1.30
09/17/17 (c	(µg/m3)	15.4	--	--	--	--	--
09/20/17	(µg/m3)	0.260	0.040	1.54	0.1	0.050	6.71
09/20/17 (c	(µg/m3)	--	--	--	--	--	7.44
09/23/17	(µg/m3)	4.53	0.196	0.312	4.90	4.46	0.930
09/23/17 (c	(µg/m3)	--	--	--	3.24	--	--
09/26/17	(µg/m3)	22.7	0.033	0.025	8.2	1.72	0.018
09/26/17 (c	(µg/m3)	--	--	--	7.40	--	--
09/29/17	(µg/m3)	29.2	3.59	1.60	21.5	22.0	3.55
09/29/17 (c	(µg/m3)	--	--	--	22.3	--	--
10/02/17	(µg/m3)	34.1	0.044	0.062	4.13	0.029	0.033
10/02/17 (c	(µg/m3)	33.9	--	--	--	--	--
10/05/17	(µg/m3)	29.7	0.025	ND	23.2	0.559	ND
10/05/17 (c	(µg/m3)	33.9	--	--	--	--	--
10/08/17	(µg/m3)	0.929	0.475	0.022	0.831	0.936	0.058
10/08/17 (c	(µg/m3)	--	--	--	0.874	--	--
10/11/17	(µg/m3)	0.355	0.279	1.60	0.258	4.79	0.987
10/11/17 (c	(µg/m3)	--	--	--	0.395	--	--
10/14/17	(µg/m3)	30.4	ND	0.058	15.7	0.047	ND
10/14/17 (c	(µg/m3)	--	--	--	16.6	--	--
10/17/17	(µg/m3)	0.112	0.044	0.029	0.504	4.82	0.044
10/17/17 (c	(µg/m3)	--	--	--	0.479	--	--
10/20/17	(µg/m3)	21.0	0.036	0.036	13.7	0.044	0.036
10/20/17 (c	(µg/m3)	20.1	--	--	--	--	--
10/23/17	(µg/m3)	0.827	0.794	0.179	0.207	2.090	0.131

EPA Chloroprene Community Air Monitoring Summary Sheet
May 25, 2016 - July 16, 2020

DATE	Units	238 Chad Baker	Acorn and Hwy 44	East St. John the	Fifth Ward Elementar	Levee	Ochsner Hospital
10/23/17 (c)	(µg/m3)	--	--	--	--	2.21	--
10/26/17	(µg/m3)	ND	15.5	1.61	0.036	2.99	43.2
10/26/17 (c)	(µg/m3)	--	--	--	--	2.86	--
10/29/17	(µg/m3)	0.033	0.033	0.033	0.036	15.9	0.025
10/29/17 (c)	(µg/m3)	--	--	--	--	--	--
11/01/17	(µg/m3)	19.5	0.036	1.44	1.65	0.033	0.025
11/01/17 (c)	(µg/m3)	--	--	--	--	--	--
11/04/17	(µg/m3)	7.29	0.029	2.13	0.646	ND	0.127
11/04/17 (c)	(µg/m3)	7.94	--	--	--	--	--
11/07/17	(µg/m3)	0.167	4.28	0.769	0.033	ND	1.44
11/07/17 (c)	(µg/m3)	--	--	--	--	--	1.37
11/10/17	(µg/m3)	1.37	1.20	0.025	2.33	6.46	0.025
11/10/17 (c)	(µg/m3)	--	--	--	--	6.89	--
11/13/17	(µg/m3)	6.20	0.033	0.029	32.1	0.210	0.029
11/13/17 (c)	(µg/m3)	--	--	--	34.1	--	--
11/16/17	(µg/m3)	28.8	0.044	0.036	32.4	0.649	0.036
11/16/17 (c)	(µg/m3)	--	--	--	41	--	--
11/19/17	(µg/m3)	0.033	0.138	0.036	0.036	24.1	0.192
11/19/17 (c)	(µg/m3)	--	--	--	--	24.6	--
11/22/17	(µg/m3)	0.464	0.062	0.025	8.2	2.7	0.036
11/22/17 (c)	(µg/m3)	--	--	--	10.9	--	--
11/25/17	(µg/m3)	21.3	17.3	39.5	6.2	21.1	89.2
11/25/17 (c)	(µg/m3)	22.4	--	--	--	--	--
11/28/17	(µg/m3)	70	Invalid	15.4	151	1.07	0.069
11/28/17 (c)	(µg/m3)	--	--	--	149	--	--
12/01/17	(µg/m3)	0.192	0.131	0.254	0.395	1.65	0.127
12/01/17 (c)	(µg/m3)	--	0.185	--	--	--	--
12/04/17	(µg/m3)	1.33	ND	0.051	0.794	0.036	
12/04/17 (c)	(µg/m3)	--	--	--	0.820	--	--
12/07/17	(µg/m3)	ND	ND	ND	0.076	0.319	ND
12/07/17 (c)	(µg/m3)	--	--	--	0.083	--	--
12/10/17	(µg/m3)	0.083	0.120	ND	0.123	0.395	0.276
12/10/17 (c)	(µg/m3)	--	0.138	--	--	--	--
12/13/17	(µg/m3)	0.029	0.283	0.316	0.018	1.15	0.490
12/13/17 (c)	(µg/m3)	--	--	--	--	1.18	--
12/16/17	(µg/m3)	1.02	0.022	0.015	0.929	0.954	0.018
12/16/17 (c)	(µg/m3)	--	--	--	--	0.910	--

EPA Chloroprene Community Air Monitoring Summary Sheet
May 25, 2016 - July 16, 2020

DATE	Units	238 Chad Baker	Acorn and Hwy 44	East St. John the	Fifth Ward Elementar	Levee	Ochsner Hospital
12/19/17	(µg/m3)	3.51	ND	0.580	12.3	--	ND
12/19/17 (c)	(µg/m3)	3.74	--	--	--	--	--
12/22/17	(µg/m3)	ND	ND	1.44	ND	ND	0.258
12/22/17 (c)	(µg/m3)	--	--	1.40	--	--	--
12/25/17	(µg/m3)	0.566	0.015	0.015	2.80	5.59	ND
12/25/17 (c)	(µg/m3)	--	0.011	--	--	--	--
12/28/17	(µg/m3)	0.015	0.018	0.015	1.06	0.468	ND
12/28/17 (c)	(µg/m3)	--	--	--	1.10	--	--
12/31/17	(µg/m3)	6.75	ND	ND	9.39	4.24	ND
12/31/17 (c)	(µg/m3)	--	--	--	12.0	--	--
01/03/18	(µg/m3)	ND	ND	ND	0.0598	2.66	ND
01/03/18 (c)	(µg/m3)	--	--	--	0.048	--	--
01/06/18	(µg/m3)	16.9	ND	0.0526	23.6	2.72	ND
01/06/18 (c)	(µg/m3)	--	--	--	25.4	--	--
01/09/18	(µg/m3)	ND	ND	ND	ND	11.6	ND
01/09/18 (c)	(µg/m3)	--	ND	--	--	--	--
01/12/18	(µg/m3)	ND	1.60	0.392	ND	0.289	1.66
01/12/18 (c)	(µg/m3)	--	--	--	--	0.302	--
01/15/18	(µg/m3)	2.65	3.84	3.84	4.50	12.0	5.37
01/15/18 (c)	(µg/m3)	--	--	--	--	12.8	--
01/19/18	(µg/m3)	2.15	6.06	0.566	2.49	4.64	5.55
01/19/18 (c)	(µg/m3)	--	--	--	--	5.11	--
01/22/18	(µg/m3)	15.6	ND	2.09	3.170	ND	1.78
01/22/18 (c)	(µg/m3)	--	--	2.03	--	--	--
01/25/18	(µg/m3)	7.00	0.0250	0.0225	2.62	26.4	ND
01/25/18 (c)	(µg/m3)	--	--	--	--	27.4	--
01/28/18	(µg/m3)	1.70	0.0196	0.0236	10.8	10.5	0.0221
01/28/18 (c)	(µg/m3)	--	--	--	7.25	--	--
01/31/18	(µg/m3)	30.9	ND	30.3	INVALID	9.68	0.111
01/31/18 (c)	(µg/m3)	34.4	--	--	--	--	--
02/03/18	(µg/m3)	8.45	0.016	0.0185	3.55	0.018	ND
02/03/18 (c)	(µg/m3)	--	--	--	3.38	--	--
02/06/18	(µg/m3)	32.0	ND	0.016	32.4	0.598	ND
02/06/18 (c)	(µg/m3)	33.2	--	--	--	--	--
02/09/18	(µg/m3)	16.5	ND	0.0406	3.950	Invalid	ND
02/09/18 (c)	(µg/m3)	25.4	--	--	--	--	--
02/12/18	(µg/m3)	0.0319	0.0348	ND	0.0243	1.190	0.0334

EPA Chloroprene Community Air Monitoring Summary Sheet
May 25, 2016 - July 16, 2020

DATE	Units	238 Chad Baker	Acorn and Hwy 44	East St. John the	Fifth Ward Elementar	Levee	Ochsner Hospital
02/12/18 (c)	(µg/m3)	--	--	--	--	1.090	--
02/15/18	(µg/m3)	0.0308	ND	3.12	0.0406	0.0337	Invalid
02/15/18 (c)	(µg/m3)	--	--	3.21	--	--	--
02/18/18	(µg/m3)	4.43	0.889	0.424	0.972	0.852	3.95
02/18/18 (c)	(µg/m3)	--	--	0.428	--	--	--
02/21/18	(µg/m3)	ND	0.0323	0.773	0.0305	0.0243	0.0316
02/21/18 (c)	(µg/m3)	ND	--	--	--	--	--
02/24/18	(µg/m3)	0.624	0.0297	1.020	0.0229	ND	0.0591
02/24/18 (c)	(µg/m3)	--	--	1.010	--	--	--
02/27/18	(µg/m3)	8.02	0.0265	0.0374	1.20	0.0497	0.0232
02/27/18 (c)	(µg/m3)	--	--	--	1.06	--	--
03/02/18	(µg/m3)	0.0606	0.0479	0.0247	0.896	0.889	0.0210
03/02/18 (c)	(µg/m3)	--	--	--	0.968	--	--
03/05/18	(µg/m3)	0.747	ND	0.33	0.490	0.403	0.088
03/05/18 (c)	(µg/m3)	0.997	--	--	--	--	--
03/08/18	(µg/m3)	ND	ND	ND	0.0809	0.910	ND
03/08/18 (c)	(µg/m3)	--	--	--	--	0.979	--
03/11/18	(µg/m3)	1.360	0.0736	0.722	0.136	0.191	0.0939
03/11/18 (c)	(µg/m3)	--	--	1.00	--	--	--
03/14/18	(µg/m3)	0.128	13.8	0.0196	3.57	28.3	0.228
03/14/18 (c)	(µg/m3)	--	--	--	3.21	--	--
03/17/18	(µg/m3)	ND	ND	0.718	ND	ND	1.06
03/17/18 (c)	(µg/m3)	--	--	0.689	--	--	--
03/20/18	(µg/m3)	ND	0.453	ND	ND	ND	0.199
03/20/18 (c)	(µg/m3)	--	0.428	--	--	--	--
03/23/18	(µg/m3)	4.75	0.849	1.04	5.15	2.42	2.75
03/23/18 (c)	(µg/m3)	--	--	--	5.55	--	--
03/26/18	(µg/m3)	ND	0.0345	0.907	0.0374	0.0359	0.114
03/26/18 (c)	(µg/m3)	--	--	0.961	--	--	--
03/29/18	(µg/m3)	0.0218	0.0406	0.689	0.0196	0.443	0.105
03/29/18 (c)	(µg/m3)	--	--	0.675	--	--	--
04/01/18	(µg/m3)	3.70	ND	0.783	8.96	2.70	0.053
04/01/18 (c)	(µg/m3)	3.555	--	--	--	--	--
04/04/18	(µg/m3)	0.285	0.0925	0.377	0.319	0.715	0.490
04/04/18 (c)	(µg/m3)	--	--	0.450	--	--	--
04/07/18	(µg/m3)	ND	0.482	0.359	ND	0.321	0.0693
04/07/18 (c)	(µg/m3)	--	--	0.377	--	--	--

EPA Chloroprene Community Air Monitoring Summary Sheet
May 25, 2016 - July 16, 2020

DATE	Units	238 Chad Baker	Acorn and Hwy 44	East St. John the	Fifth Ward Elementar	Levee	Ochsner Hospital
04/10/18	(µg/m3)	0.0424	ND	ND	0.119	1.04	ND
04/10/18 (c)	(µg/m3)	--	--	--	--	1.02	--
04/13/18	(µg/m3)	ND	ND	2.47	ND	ND	0.0178
04/13/18 (c)	(µg/m3)	--	--	2.58	--	--	--
04/16/18	(µg/m3)	ND	0.388	ND	ND	0.0243	0.0185
04/16/18 (c)	(µg/m3)	--	0.392	--	--	--	--
04/19/18	(µg/m3)	ND	1.11	ND	ND	2.54	1.49
04/19/18 (c)	(µg/m3)	--	--	--	--	--	1.81
04/22/18	(µg/m3)	0.421	ND	0.482	0.101	ND	0.0258
04/22/18 (c)	(µg/m3)	INVALID	--	--	--	--	--
04/25/18	(µg/m3)	ND	3.99	ND	ND	4.72	0.120
04/25/18 (c)	(µg/m3)	--	--	ND	--	--	--
04/28/18	(µg/m3)	0.522	7.51	ND	4.86	22.1	ND
04/28/18 (c)	(µg/m3)	--	--	--	--	21.8	--
05/01/18	(µg/m3)	0.261	0.0229	0.100	INVALID	ND	ND
05/01/18 (c)	(µg/m3)	0.261	--	--	--	--	--
05/04/18	(µg/m3)	ND	0.0272	0.0490	INVALID	0.0268	0.0297
05/04/18 (c)	(µg/m3)	ND	--	--	--	--	--
05/07/18	(µg/m3)	ND	0.340	ND	ND	1.35	ND
05/07/18 (c)	(µg/m3)	--	--	--	--	1.30	--
05/10/18	(µg/m3)	10.8	ND	4.53	2.22	0.0479	0.328
05/10/18 (c)	(µg/m3)	--	--	4.43	--	--	--
05/13/18	(µg/m3)	3.35	ND	0.299	0.947	0.0341	0.0185
05/13/18 (c)	(µg/m3)	3.53	--	--	--	--	--
05/16/18	(µg/m3)	0.0341	0.235	0.106	0.0428	1.82	0.226
05/16/18 (c)	(µg/m3)	--	--	--	--	1.86	--
05/19/18	(µg/m3)	0.827	0.598	0.540	0.172	0.297	0.435
05/19/18 (c)	(µg/m3)	--	--	--	--	--	0.439
05/22/18	(µg/m3)	ND	0.504	0.0671	0.0105	1.26	0.700
05/22/18 (c)	(µg/m3)	ND	--	--	--	--	--
05/25/18	(µg/m3)	0.100	0.885	0.116	0.222	2.29	0.0591
05/25/18 (c)	(µg/m3)	--	--	0.0624	--	--	--
05/28/18	(µg/m3)	0.468	ND	ND	0.103	3.53	ND
05/28/18 (c)	(µg/m3)	--	--	--	0.132	--	--
05/31/18	(µg/m3)	ND	ND	0.646	ND	ND	1.020
05/31/18 (c)	(µg/m3)	--	--	0.664	--	--	--
06/03/18	(µg/m3)	ND	0.783	ND	ND	ND	ND

EPA Chloroprene Community Air Monitoring Summary Sheet
May 25, 2016 - July 16, 2020

DATE	Units	238 Chad Baker	Acorn and Hwy 44	East St. John the	Fifth Ward Elementar	Levee	Ochsner Hospital
06/03/18 (c)	(µg/m3)	--	--	--	--	--	ND
06/06/18	(µg/m3)	0.0617	1.03	0.0323	0.0519	1.24	0.0606
06/06/18 (c)	(µg/m3)	--	--	--	--	1.16	--
06/09/18	(µg/m3)	8.49	4.21	1.68	0.689	6.06	5.44
06/09/18 (c)	(µg/m3)	7.80	--	--	--	--	--
06/12/18	(µg/m3)	0.413	ND	1.41	ND	ND	ND
06/12/18 (c)	(µg/m3)	--	--	1.39	--	--	--
06/15/18	(µg/m3)	1.24	1.59	1.14	2.04	5.11	0.958
06/15/18 (c)	(µg/m3)	--	--	1.21	--	--	--
06/18/18	(µg/m3)	4.43	0.238	0.0932	ND	1.06	0.310
06/18/18 (c)	(µg/m3)	3.84	--	--	--	--	--
06/21/18	(µg/m3)	ND	0.314	0.450	0.0464	0.693	0.609
06/21/18 (c)	(µg/m3)	--	--	0.374	--	--	--
06/24/18	(µg/m3)	ND	0.0229	ND	ND	ND	2.980
06/24/18 (c)	(µg/m3)	--	--	--	--	--	3.430
06/27/18	(µg/m3)	0.063	0.0156	0.182	ND	ND	0.758
06/27/18 (c)	(µg/m3)	0.0686	--	--	--	--	--
06/30/18	(µg/m3)	0.0417	0.794	0.0268	0.0395	0.0457	0.220
06/30/18 (c)	(µg/m3)	--	0.841	--	--	--	--
07/03/18	(µg/m3)	1.86	1.31	0.200	1.09	2.04	0.220
07/03/18 (c)	(µg/m3)	--	1.28	--	--	--	--
07/06/18	(µg/m3)	2.01	0.0479	ND	0.881	0.342	0.151
07/06/18 (c)	(µg/m3)	--	--	--	0.856	--	--
07/09/18	(µg/m3)	ND	0.0116	ND	1.32	0.0192	0.0374
07/09/18 (c)	(µg/m3)	--	--	ND	--	--	--
07/12/18	(µg/m3)	ND	0.820	ND	ND	0.729	ND
07/12/18 (c)	(µg/m3)	--	--	--	ND	--	--
07/15/18	(µg/m3)	ND	1.76	ND	ND	ND	0.237
07/15/18 (c)	(µg/m3)	--	1.89	--	--	--	--
07/18/18	(µg/m3)	0.0218	1.04	ND	0.0345	ND	0.537
07/18/18 (c)	(µg/m3)	--	1.20	--	--	--	--
07/21/18	(µg/m3)	ND	0.432	ND	ND	0.0294	ND
07/21/18 (c)	(µg/m3)	--	0.43	--	--	--	--
07/24/18	(µg/m3)	0.512	0.0651	ND	0.128	0.348	0.0236
07/24/18 (c)	(µg/m3)	--	--	ND	--	--	--
07/27/18	(µg/m3)	0.0406	0.0776	ND	ND	0.294	0.127
07/27/18 (c)	(µg/m3)	--	--	--	0.0129	--	--

EPA Chloroprene Community Air Monitoring Summary Sheet
May 25, 2016 - July 16, 2020

DATE	Units	238 Chad Baker	Acorn and Hwy 44	East St. John the	Fifth Ward Elementar	Levee	Ochsner Hospital
07/30/18	(µg/m3)	0.159	0.476	0.0417	0.0923	0.295	0.233
07/30/18 (c)	(µg/m3)	--	0.466	--	--	--	--
08/02/18	(µg/m3)	0.736	0.0446	0.121	0.395	1.38	0.0769
08/02/18 (c)	(µg/m3)	--	--	--	0.355	--	--
08/05/18	(µg/m3)	1.56	ND	ND	1.840	ND	0.0395
08/05/18 (c)	(µg/m3)	--	--	ND	--	--	--
08/08/18	(µg/m3)	2.17	1.14	1.11	3.42	10.2	1.04
08/08/18 (c)	(µg/m3)	--	--	1.20	--	--	--
08/11/18	(µg/m3)	2.31	2.56	0.693	1.81	2.95	2.15
08/11/18 (c)	(µg/m3)	--	--	--	--	3.06	--
08/14/18	(µg/m3)	ND	1.20	0.0475	0.0319	0.551	0.791
08/14/18 (c)	(µg/m3)	--	--	--	--	--	0.827
08/17/18	(µg/m3)	0.343	ND	0.526	ND	0.0446	ND
08/17/18 (c)	(µg/m3)	--	--	0.519	--	--	--
08/20/18	(µg/m3)	ND	ND	0.537	ND	ND	0.353
08/20/18 (c)	(µg/m3)	--	--	0.522	--	--	--
08/23/18	(µg/m3)	0.838	ND	0.0218	1.42	1.30	ND
08/23/18 (c)	(µg/m3)	--	--	--	--	1.26	--
08/26/18	(µg/m3)	0.972	0.0265	0.0312	1.57	INVALID	0.0254
08/26/18 (c)	(µg/m3)	1.38	--	--	--	--	--
08/29/18	(µg/m3)	3.28	0.151	0.110	1.48	0.617	0.0548
08/29/18 (c)	(µg/m3)	3.40	--	--	--	--	--
09/01/18	(µg/m3)	5.69	ND	ND	0.166	0.0254	0.0308
09/01/18 (c)	(µg/m3)	5.88	--	--	--	--	--
09/04/18	(µg/m3)	9.32	ND	0.197	3.40	0.0218	0.0141
09/04/18 (c)	(µg/m3)	8.20	--	--	--	--	--
09/07/18	(µg/m3)	1.50	0.104	0.965	2.21	7.65	0.177
09/07/18 (c)	(µg/m3)	--	--	0.903	--	--	--
09/10/18	(µg/m3)	2.09	4.86	ND	1.80	3.08	1.45
09/10/18 (c)	(µg/m3)	--	5.44	--	--	--	--
09/13/18	(µg/m3)	3.05	0.277	0.0660	3.32	0.457	0.205
09/13/18 (c)	(µg/m3)	3.06	--	--	--	--	--
09/16/18	(µg/m3)	0.831	1.45	ND	0.392	0.881	0.421
09/16/18 (c)	(µg/m3)	--	--	--	--	0.722	--
09/19/18	(µg/m3)	0.173	2.97	0.776	0.0337	0.217	19.7
09/19/18 (c)	(µg/m3)	--	--	--	--	0.233	--
09/22/18	(µg/m3)	2.45	1.29	0.588	9.32	1.11	0.870

EPA Chloroprene Community Air Monitoring Summary Sheet
May 25, 2016 - July 16, 2020

DATE	Units	238 Chad Baker	Acorn and Hwy 44	East St. John the	Fifth Ward Elementar	Levee	Ochsner Hospital
09/22/18 (c)	(µg/m3)	2.43	--	--	--	--	--
09/25/18	(µg/m3)	2.99	ND	0.258	1.67	ND	0.0316
09/25/18 (c)	(µg/m3)	--	--	0.282	--	--	--
09/28/18	(µg/m3)	0.35	1.10	0.715	2.60	1.10	0.428
09/28/18 (c)	(µg/m3)	--	--	--	--	1.11	--
10/01/18	(µg/m3)	28.2	0.314	0.206	2.09	1.59	1.60
10/01/18 (c)	(µg/m3)	--	--	--	2.21	--	--
10/04/18	(µg/m3)	13.0	ND	ND	9.76	0.122	ND
10/04/18 (c)	(µg/m3)	--	--	--	8.49	--	--
10/07/18	(µg/m3)	7.180	0.159	0.133	7.91	0.350	0.172
10/07/18 (c)	(µg/m3)	--	0.246	--	--	--	--
10/10/18	(µg/m3)	2.51	0.0287	0.0287	2.78	2.22	0.0301
10/10/18 (c)	(µg/m3)	--	--	--	--	2.22	--
10/13/18	(µg/m3)	37.4	34.2	5.19	57.7	98.7	41.0
10/13/18 (c)	(µg/m3)	--	--	--	47.9	--	--
10/16/18	(µg/m3)	0.204	ND	0.00689	0.595	0.144	ND
10/16/18 (c)	(µg/m3)	0.218	--	--	--	--	--
10/19/18	(µg/m3)	0.151	0.0261	0.0250	1.53	0.143	0.0319
10/19/18 (c)	(µg/m3)	--	--	--	1.57	--	--
10/22/18	(µg/m3)	0.0504	0.0268	0.0305	0.144	0.241	0.0305
10/22/18 (c)	(µg/m3)	--	--	--	0.143	--	--
10/25/18	(µg/m3)	0.537	0.0363	0.0439	0.142	0.0718	0.0497
10/25/18 (c)	(µg/m3)	0.501	--	--	--	--	--
10/28/18	(µg/m3)	ND	1.25	0.158	0.0229	0.185	10.9
10/28/18 (c)	(µg/m3)	--	--	--	--	--	11.8
10/31/18	(µg/m3)	0.0163	0.0134	1.48	ND	ND	0.0156
10/31/18 (c)	(µg/m3)	--	--	1.52	--	--	--
11/03/18	(µg/m3)	0.0443	3.81	3.66	ND	0.482	2.13
11/03/18 (c)	(µg/m3)	--	3.81	--	--	--	--
11/06/18	(µg/m3)	0.667	0.1020	ND	0.316	0.113	ND
11/06/18 (c)	(µg/m3)	--	--	0.0178	--	--	--
11/09/18	(µg/m3)	1.91	INVALID	ND	2.15	3.63	0.0141
11/09/18 (c)	(µg/m3)	--	--	--	1.84	--	--
11/12/18	(µg/m3)	1.310	0.0406	0.0424	0.976	0.211	ND
11/12/18 (c)	(µg/m3)	--	--	--	--	--	ND
11/15/18	(µg/m3)	ND	ND	ND	ND	0.740	ND
11/15/18 (c)	(µg/m3)	--	--	--	--	0.740	--

**EPA Chloroprene Community Air Monitoring Summary Sheet
May 25, 2016 - July 16, 2020**

DATE	Units	238 Chad Baker	Acorn and Hwy 44	East St. John the	Fifth Ward Elementar	Levee	Ochsner Hospital
11/18/18	(µg/m3)	8.67	ND	ND	6.89	0.968	ND
11/18/18 (c	(µg/m3)	8.34	--	--	--	--	--
11/21/18	(µg/m3)	0.780	ND	ND	0.220	3.88	ND
11/21/18 (c	(µg/m3)	--	--	--	--	3.74	--
11/24/18	(µg/m3)	2.45	0.156	1.08	0.548	1.21	0.156
11/24/18 (c	(µg/m3)	--	--	--	0.519	--	--
11/27/18	(µg/m3)	--	--	--	--	--	--
11/27/18 (c	(µg/m3)	--	--	--	--	--	--
11/30/18	(µg/m3)	ND	ND	2.61	ND	ND	ND
11/30/18 (c	(µg/m3)	--	--	2.67	--	--	--
12/03/18	(µg/m3)	3.66	ND	0.504	1.68	4.46	0.255
12/03/18 (c	(µg/m3)	--	--	0.519	--	--	--
12/06/18	(µg/m3)	5.15	ND	ND	15.2	0.374	ND
12/06/18 (c	(µg/m3)	--	--	ND	--	--	--
12/09/18	(µg/m3)	0.284	0.410	ND	0.191	0.580	0.154
12/09/18 (c	(µg/m3)	--	0.406	--	--	--	--
12/12/18	(µg/m3)	10.8	2.60	5.51	6.13	4.17	5.04
12/12/18 (c	(µg/m3)	10.9	--	--	--	--	--
12/15/18	(µg/m3)	ND	0.914	ND	ND	ND	ND
12/15/18 (c	(µg/m3)	--	--	--	--	--	ND
12/18/18	(µg/m3)	4.50	77.3	ND	24.9	40.3	38.4
12/18/18 (c	(µg/m3)	--	--	--	24.7	--	--
12/21/18	(µg/m3)	ND	ND	ND	ND	ND	ND
12/21/18 (c	(µg/m3)	--	ND	--	--	--	--
12/24/18	(µg/m3)	4.75	0.31	ND	1.06	1.22	ND
12/24/18 (c	(µg/m3)	--	--	--	0.983	--	--
12/27/18	(µg/m3)	2.17	ND	0.211	ND	ND	ND
12/27/18 (c	(µg/m3)	2.11	--	--	--	--	--
12/30/18	(µg/m3)	0.333	ND	ND	4.13	0.370	ND
12/30/18 (c	(µg/m3)	--	--	--	4.24	--	--
01/02/19	(µg/m3)	2.56	ND	ND	6.49	0.271	ND
01/02/19 (c	(µg/m3)	--	--	--	6.24	--	--
01/05/19	(µg/m3)	ND	3.52	ND	ND	0.987	ND
01/05/19 (c	(µg/m3)	--	3.47	--	--	--	--
01/08/19	(µg/m3)	ND	0.602	1.94	ND	0.220	2.580
01/08/19 (c	(µg/m3)	--	--	1.93	--	--	--
01/11/19	(µg/m3)	1.52	ND	ND	2.06	4.06	ND

EPA Chloroprene Community Air Monitoring Summary Sheet
May 25, 2016 - July 16, 2020

DATE	Units	238 Chad Baker	Acorn and Hwy 44	East St. John the	Fifth Ward Elementar	Levee	Ochsner Hospital
01/11/19 (c)	(µg/m3)	--	--	ND	--	--	--
01/14/19	(µg/m3)	ND	ND	ND	ND	3.29	ND
01/14/19 (c)	(µg/m3)	--	--	--	--	3.84	--
01/17/19	(µg/m3)	0.314	0.0635	0.475	ND	ND	0.267
01/17/19 (c)	(µg/m3)	--	--	0.403	--	--	--
01/20/19	(µg/m3)	0.0283	ND	0.0272	0.219	0.0312	ND
01/20/19 (c)	(µg/m3)	--	ND	--	--	--	--
01/23/19	(µg/m3)	1.02	0.0189	0.544	0.284	ND	ND
01/23/19 (c)	(µg/m3)	1.02	--	--	--	--	--
01/26/19	(µg/m3)	6.53	ND	1.56	11.8	1.44	0.384
01/26/19 (c)	(µg/m3)	--	--	--	11.4	--	--
01/29/19	(µg/m3)	ND	ND	1.33	ND	3.81	0.214
01/29/19 (c)	(µg/m3)	--	--	1.26	--	--	--
02/01/19	(µg/m3)	27.2	ND	ND	0.958	0.0693	ND
02/01/19 (c)	(µg/m3)	28.3	--	--	--	--	--
02/04/19	(µg/m3)	26.4	ND	0.239	0.990	0.347	ND
02/04/19 (c)	(µg/m3)	22.9	--	--	--	--	--
02/07/19	(µg/m3)	ND	ND	0.157	ND	ND	0.101
02/07/19 (c)	(µg/m3)	--	--	0.150	--	--	--
02/10/19	(µg/m3)	11.2	ND	ND	4.24	0.169	ND
02/10/19 (c)	(µg/m3)	--	--	--	3.77	--	--
02/13/19	(µg/m3)	0.370	0.0765	ND	1.31	1.11	ND
02/13/19 (c)	(µg/m3)	--	--	--	--	1.10	--
02/16/19	(µg/m3)	ND	0.351	ND	ND	ND	0.384
02/16/19 (c)	(µg/m3)	--	--	--	--	--	0.403
02/19/19	(µg/m3)	6.93	ND	ND	1.90	ND	ND
02/19/19 (c)	(µg/m3)	--	--	--	1.96	--	--
02/22/19	(µg/m3)	0.765	ND	0.841	0.291	ND	0.241
02/22/19 (c)	(µg/m3)	--	--	0.823	--	--	--
02/25/19	(µg/m3)	3.06	ND	ND	0.624	0.765	ND
02/25/19 (c)	(µg/m3)	--	--	--	--	0.762	--
02/28/19	(µg/m3)	ND	ND	1.50	ND	ND	2.89
02/28/19 (c)	(µg/m3)	--	--	1.51	--	--	--
03/07/19	(µg/m3)	6.24	ND	1.11	1.55	0.994	ND
03/07/19 (c)	(µg/m3)	--	--	--	1.61	--	--
03/14/19	(µg/m3)	ND	ND	1.60	ND	ND	0.0384
03/14/19 (c)	(µg/m3)	--	--	1.64	--	--	--

EPA Chloroprene Community Air Monitoring Summary Sheet
May 25, 2016 - July 16, 2020

DATE	Units	238 Chad Baker	Acorn and Hwy 44	East St. John the	Fifth Ward Elementar	Levee	Ochsner Hospital
03/21/19	(µg/m3)	ND	0.482	0.0138	ND	1.03	0.816
03/21/19 (c)	(µg/m3)	--	--	--	ND	--	--
03/28/19	(µg/m3)	7.40	0.399	2.32	9.21	10.6	7.44
03/28/19 (c)	(µg/m3)	--	--	--	10.0	--	--
04/04/19	(µg/m3)	2.09	0.0258	0.174	2.58	0.282	ND
04/04/19 (c)	(µg/m3)	--	--	--	1.4	--	--
04/11/19	(µg/m3)	ND	ND	0.780	ND	ND	0.776
04/11/19 (c)	(µg/m3)	--	--	0.675	--	--	--
04/17/19	(µg/m3)	0.262	ND	0.192	ND	ND	ND
04/17/19 (c)	(µg/m3)	--	--	--	ND	--	--
04/23/19	(µg/m3)	3.84	ND	2.31	0.240	ND	ND
04/23/19 (c)	(µg/m3)	5.22	--	--	--	--	--
04/29/19	(µg/m3)	3.88	ND	0.870	0.293	ND	ND
04/29/19 (c)	(µg/m3)	--	--	0.718	--	--	--
05/05/19	(µg/m3)	ND	ND	ND	INVALID	1.20	3.09
05/05/19 (c)	(µg/m3)	--	--	--	ND	--	--
05/11/19	(µg/m3)	1.35	ND	0.238	ND	ND	0.0236
05/11/19 (c)	(µg/m3)	--	--	--	ND	--	--
05/17/19	(µg/m3)	1.57	ND	0.765	ND	1.17	ND
05/17/19 (c)	(µg/m3)	1.53	--	--	--	--	--
05/23/19	(µg/m3)	0.216	ND	0.240	0.461	0.123	ND
05/23/19 (c)	(µg/m3)	--	--	--	0.432	--	--
05/29/19	(µg/m3)	ND	ND	1.43	ND	ND	INVALID
05/29/19 (c)	(µg/m3)	--	--	1.35	--	--	--
06/04/19	(µg/m3)	4.93	4.75	ND	5.15	7.0	INVALID
06/04/19 (c)	(µg/m3)	--	--	--	4.10	--	--
06/10/19	(µg/m3)	ND	ND	ND	2.73	22.5	ND
06/10/19 (c)	(µg/m3)	--	--	--	--	19.9	--
06/16/19	(µg/m3)	0.446	ND	0.870	0.347	ND	0.305
06/16/19 (c)	(µg/m3)	--	--	0.838	--	--	--
06/22/19	(µg/m3)	ND	ND	0.132	ND	ND	0.217
06/22/19 (c)	(µg/m3)	--	--	0.129	--	--	--
06/28/19	(µg/m3)	3.20	0.273	0.540	1.98	4.03	0.392
06/28/19 (c)	(µg/m3)	--	--	--	--	3.99	--
07/04/19	(µg/m3)	0.551	1.440	0.646	0.74	1.46	2.34
07/04/19 (c)	(µg/m3)	--	--	--	--	--	2.24
07/10/19	(µg/m3)	0.355	3.66	0.133	ND	ND	0.294

EPA Chloroprene Community Air Monitoring Summary Sheet
May 25, 2016 - July 16, 2020

DATE	Units	238 Chad Baker	Acorn and Hwy 44	East St. John the	Fifth Ward Elementar	Levee	Ochsner Hospital
07/10/19 (c)	(µg/m3)	--	3.63	--	--	--	--
07/16/19	(µg/m3)	ND	ND	0.595	ND	ND	ND
07/16/19 (c)	(µg/m3)	--	--	0.530	--	--	--
07/22/19	(µg/m3)	0.450	1.44	0.889	0.135	0.177	3.12
07/22/19 (c)	(µg/m3)	--	--	0.751	--	--	--
07/28/19	(µg/m3)	2.09	0.0457	0.356	4.13	0.176	0.192
07/28/19 (c)	(µg/m3)	--	--	0.341	--	--	--
08/03/19	(µg/m3)	ND	0.707	0.0559	0.183	0.635	1.55
08/03/19 (c)	(µg/m3)	--	--	--	--	0.638	--
08/09/19	(µg/m3)	ND	1.69	ND	ND	0.0236	1.33
08/09/19 (c)	(µg/m3)	--	--	--	--	--	1.33
08/15/19	(µg/m3)	0.185	0.315	ND	0.559	2.09	ND
08/15/19 (c)	(µg/m3)	--	--	--	--	1.99	--
08/21/19	(µg/m3)	0.464	0.0319	0.0729	0.0319	ND	0.548
08/21/19 (c)	(µg/m3)	--	--	0.0733	--	--	--
08/27/19	(µg/m3)	ND	0.243	ND	ND	0.0432	0.363
08/27/19 (c)	(µg/m3)	--	--	--	--	--	0.704
09/02/19	(µg/m3)	0.588	ND	ND	1.04	0.609	ND
09/02/19 (c)	(µg/m3)	--	--	--	0.791	--	--
09/08/19	(µg/m3)	3.88	4.17	ND	0.0334	0.107	ND
09/08/19 (c)	(µg/m3)	--	--	--	--	--	--
09/14/19	(µg/m3)	4.97	ND	0.475	5.30	1.12	0.014
09/14/19 (c)	(µg/m3)	--	--	--	INVALID	--	--
09/20/19	(µg/m3)	1.65	ND	0.112	0.130	ND	ND
09/20/19 (c)	(µg/m3)	--	--	--	0.144	--	--
09/26/19	(µg/m3)	0.045	6.31	0.130	0.019	1.52	0.696
09/26/19 (c)	(µg/m3)	--	--	--	ND	--	--
10/02/19	(µg/m3)	3.74	ND	2.35	1.51	5.187	12.0
10/02/19 (c)	(µg/m3)	3.74	--	--	--	--	--
10/08/19	(µg/m3)	ND	ND	ND	0.885	0.997	ND
10/08/19 (c)	(µg/m3)	--	--	--	--	INVALID	--
10/14/19	(µg/m3)	9.03	ND	ND	1.70	1.58	ND
10/14/19 (c)	(µg/m3)	--	--	--	--	1.69	--
10/20/19	(µg/m3)	1.11	1.49	1.18	0.0508	0.718	5.26
10/20/19 (c)	(µg/m3)	--	1.49	--	--	--	--
10/26/19	(µg/m3)	0.744	0.233	0.0181	0.624	0.464	0.143
10/26/19 (c)	(µg/m3)	0.635	--	--	--	--	--

EPA Chloroprene Community Air Monitoring Summary Sheet
May 25, 2016 - July 16, 2020

DATE	Units	238 Chad Baker	Acorn and Hwy 44	East St. John the	Fifth Ward Elementar	Levee	Ochsner Hospital
11/01/19	(µg/m3)	ND	ND	ND	0.0345	0.214	ND
11/01/19 (c)	(µg/m3)	--	--	--	--	0.211	--
11/07/19	(µg/m3)	0.226	ND	ND	0.095	0.167	ND
11/07/19 (c)	(µg/m3)	--	--	--	0.102	--	--
11/13/19	(µg/m3)	ND	ND	ND	0.00435	0.0736	ND
11/13/19 (c)	(µg/m3)	--	--	--	--	0.0783	--
11/19/19	(µg/m3)	ND	12.6	ND	0.511	14.4	0.667
11/19/19 (c)	(µg/m3)	--	12.6	--	--	--	--
11/25/19	(µg/m3)	4.06	2.55	4.82	0.791	0.805	9.21
11/25/19 (c)	(µg/m3)	--	2.48	--	--	--	--
12/01/19	(µg/m3)	ND	0.0102	ND	ND	0.457	1.810
12/01/19 (c)	(µg/m3)	--	0.0116	--	--	--	--
12/07/19	(µg/m3)	ND	0.287	ND	0.0268	0.374	ND
12/07/19 (c)	(µg/m3)	--	--	--	--	0.399	--
12/13/19	(µg/m3)	0.812	0.202	ND	2.640	ND	ND
12/13/19 (c)	(µg/m3)	--	--	--	2.420	--	--
12/19/19	(µg/m3)	0.464	ND	ND	0.214	1.65	ND
12/19/19 (c)	(µg/m3)	--	--	--	--	1.65	--
12/25/19	(µg/m3)	0.820	0.0199	0.297	0.306	0.624	0.0232
12/25/19 (c)	(µg/m3)	--	--	--	0.300	--	--
12/31/19	(µg/m3)	ND	0.0475	ND	ND	1.730	ND
12/31/19 (c)	(µg/m3)	--	0.0490	--	--	--	--
01/06/20	(µg/m3)	0.0490	0.0472	0.00580	0.289	ND	0.301
01/06/20 (c)	(µg/m3)	--	--	--	0.257	--	--
01/12/20	(µg/m3)	0.704	1.83	ND	1.15	0.537	ND
01/12/20 (c)	(µg/m3)	--	--	--	--	0.595	--
01/18/20	(µg/m3)	22.6	ND	0.943	0.0874	ND	0.200
01/18/20 (c)	(µg/m3)	24.1	--	--	--	--	--
01/24/20	(µg/m3)	0.0631	0.0566	0.845	0.145	0.417	0.0308
01/24/20 (c)	(µg/m3)	--	--	--	0.0686	--	--
01/30/20	(µg/m3)	1.03	ND	ND	1.25	0.285	ND
01/30/20 (c)	(µg/m3)	--	--	--	--	0.287	--
02/05/20	(µg/m3)	ND	ND	0.33	ND	ND	0.0787
02/05/20 (c)	(µg/m3)	--	--	0.226	--	--	--
02/11/20	(µg/m3)	ND	ND	ND	ND	ND	0.53
02/11/20 (c)	(µg/m3)	--	--	ND	--	--	--
02/17/20	(µg/m3)	2.6	ND	ND	5.37	0.0116	ND

EPA Chloroprene Community Air Monitoring Summary Sheet
May 25, 2016 - July 16, 2020

DATE	Units	238 Chad Baker	Acorn and Hwy 44	East St. John the	Fifth Ward Elementar	Levee	Ochsner Hospital
02/17/20 (c)	(µg/m3)	--	--	--	5.04	--	--
02/23/20	(µg/m3)	1.69	ND	0.236	0.0889	ND	ND
02/23/20 (c)	(µg/m3)	--	--	--	0.0885	--	--
02/29/20	(µg/m3)	ND	2,86	0.627	ND	0.834	5.4
02/29/20 (c)	(µg/m3)	--	2.89	--	--	--	--
03/06/20	(µg/m3)	ND	ND	ND	ND	1.18	ND
03/06/20 (c)	(µg/m3)	--	--	--	--	1.15	--
03/12/20	(µg/m3)	ND	0.296	0.306	ND	ND	0.569
03/12/20 (c)	(µg/m3)	--	--	--	--	--	0.584
03/18/20	(µg/m3)	1.46	ND	0.609	0.566	ND	ND
03/18/20 (c)	(µg/m3)	--	--	--	0.562	--	--
03/24/20	(µg/m3)	ND	ND	0.177	ND	ND	0.443
03/24/20 (c)	(µg/m3)	--	--	0.183	--	--	--
03/30/20	(µg/m3)	7.98	ND	ND	1.59	0.119	ND
03/30/20 (c)	(µg/m3)	--	--	--	1.57	--	--
04/05/20	(µg/m3)	1.35	0.555	0.269	0.302	0.508	0.384
04/05/20 (c)	(µg/m3)	--	--	--	0.296	--	--
04/11/20	(µg/m3)	6.49	ND	ND	16.6	0.537	ND
04/11/20 (c)	(µg/m3)	--	--	--	15.3	--	--
04/17/20	(µg/m3)	3.16	INVALID	0.457	11.8	ND	ND
04/17/20 (c)	(µg/m3)	--	--	--	11.6	--	--
04/23/20	(µg/m3)	ND	0.0671	0.205	ND	ND	0.530
04/23/20 (c)	(µg/m3)	--	--	0.198	--	--	--
04/29/20	(µg/m3)	0.230	0.320	0.153	0.176	2.44	0.195
04/29/20 (c)	(µg/m3)	--	--	0.155	--	--	--
05/05/20	(µg/m3)	0.424	0.182	0.198	1.33	0.827	0.134
05/05/20 (c)	(µg/m3)	--	--	0.188	--	--	--
05/11/20	(µg/m3)	0.170	ND	ND	0.220	2.12	ND
05/11/20 (c)	(µg/m3)	--	--	--	--	2.16	--
05/17/20	(µg/m3)	ND	ND	0.277	ND	ND	1.34
05/17/20 (c)	(µg/m3)	--	--	1.32	--	--	--
05/23/20	(µg/m3)	0.0167	ND	0.325	0.0501	0.0229	0.0134
05/23/20 (c)	(µg/m3)	--	--	0.49	--	--	--
05/29/20	(µg/m3)	1.40	0.0377	1.15	1.56	1.32	0.0555
05/29/20 (c)	(µg/m3)	--	--	1.26	--	--	--
06/04/20	(µg/m3)	0.740	0.0475	0.359	0.0816	0.0598	0.0508
06/04/20 (c)	(µg/m3)	--	--	0.351	--	--	--

EPA Chloroprene Community Air Monitoring Summary Sheet
May 25, 2016 - July 16, 2020

DATE	Units	238 Chad Baker	Acorn and Hwy 44	East St. John the	Fifth Ward Elementar	Levee	Ochsner Hospital
06/10/20	(µg/m ³)	ND	0.0268	0.0305	ND	0.0192	0.0076
06/10/20 (c)	(µg/m ³)	--	--	0.0326	--	--	--
06/16/20	(µg/m ³)	0.0682	1.58	ND	0.272	0.805	1.08
06/16/20 (c)	(µg/m ³)	--	--	--	0.275	--	--
06/22/20	(µg/m ³)	0.0236	0.0189	0.0116	0.0149	0.0156	0.0472
06/22/20 (c)	(µg/m ³)	--	--	0.0287	--	--	--
06/28/20	(µg/m ³)	ND	ND	0.112	ND	ND	ND
06/28/20 (c)	(µg/m ³)	--	--	0.127	--	--	--
07/04/20	(µg/m ³)	ND	0.0939	ND	ND	0.0359	0.0294
07/04/20 (c)	(µg/m ³)	--	--	--	--	--	--
07/10/20	(µg/m ³)	ND	0.0443	ND	ND	0.0588	0.291
07/10/20 (c)	(µg/m ³)	--	0.0432	--	--	--	--
07/16/20	(µg/m ³)	0.0769	INVALID	0.0141	ND	0.136	0.0392
07/16/20 (collocated)		--	--	--	--	--	0.0410
NOTES	EXPLANATION						
	*11-27-18 sample was skipped due to ERG not getting the canisters to Weston in time.						
	1-6 sampling schedule started 03/01/19						
---	No sample received in lab						
Invalid	Sample was invalid						
ND	Concentration not detected						
<i>Italicized</i>	<i>Concentration below method detection limit</i>						

Method detection limit (ppbv) = 0.0115
Method detection limit (µg/m³) = 0.0417

Mol. Weight	88.5
Factor	3.63