

WELCOME



RECOVERY AND RESILIENCY PARTNERSHIP MEXICO BEACH

STORMWATER MANAGEMENT AND GREENSPACE PROJECT

MEXICO BEACH, FLORIDA

DECEMBER 2019



Recover and Resiliency Partnership

A project of EPA Region 4, FEMA Interagency Recovery Coordination field operations, and Mexico Beach, Florida to support coastal recovery from Hurricane Michael and improve the city's future resilience to stormwater impacts.



PROJECTS



Citywide Greenway-
Blueway Trail System

City Pier

Parker Park

Central
Wetland
Park

8th Street
Canal

Under the Palms Park
Greenway Extension

East Wetland Park

Legend

- Park
- Canal
- Proposed Stormwater Detention
- Highway 98 sidewalks
- Blueway
- Greenway



COMMUNITY ENGAGEMENT



CONCEPT DESIGNS



1 | Regional Stormwater Detention

2 | 8th Street Canal

3 | Wetland Parks

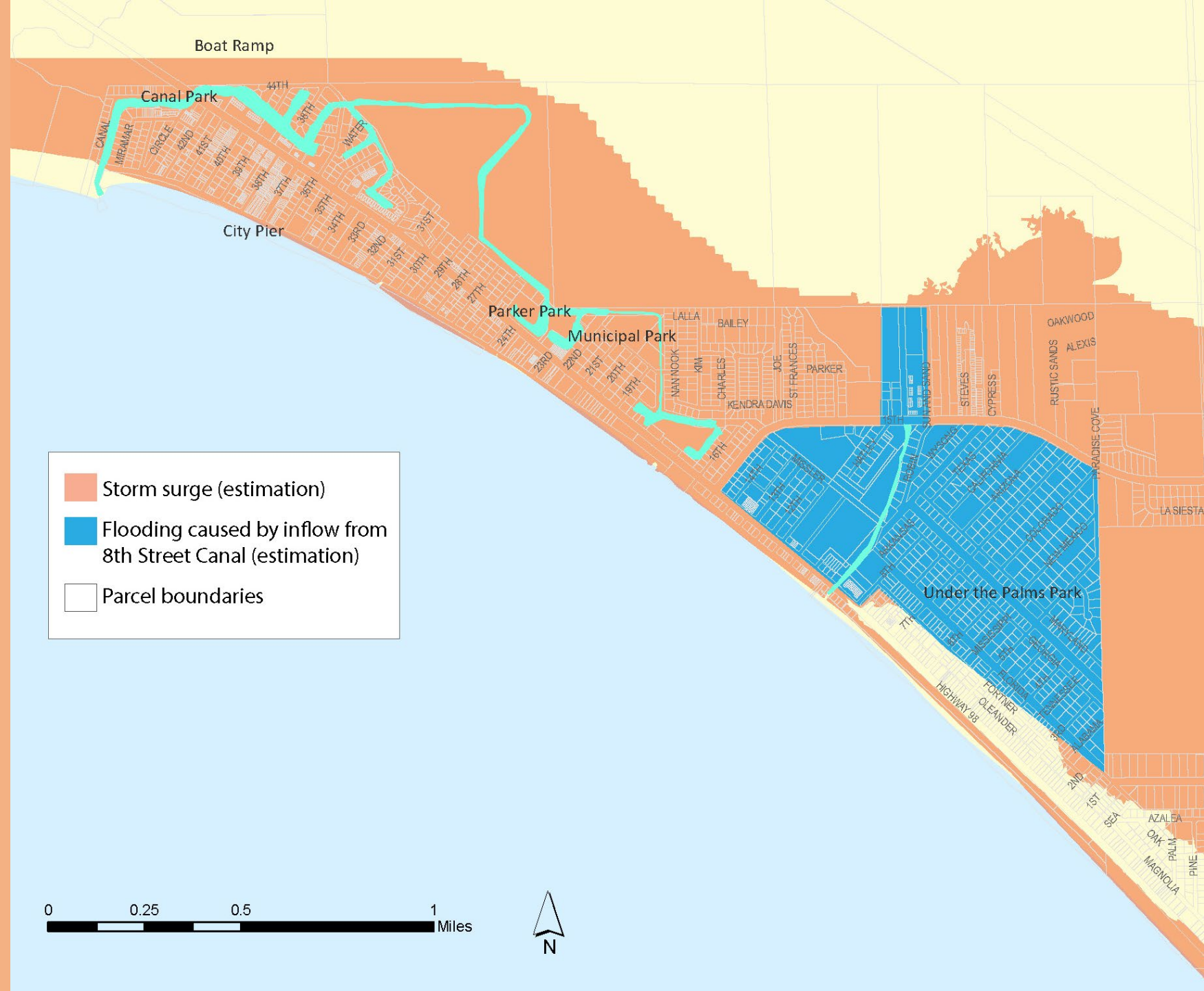
4 | Under the Palms Park Greenway Extension

5 | Citywide Greenway-Blueway Trail System

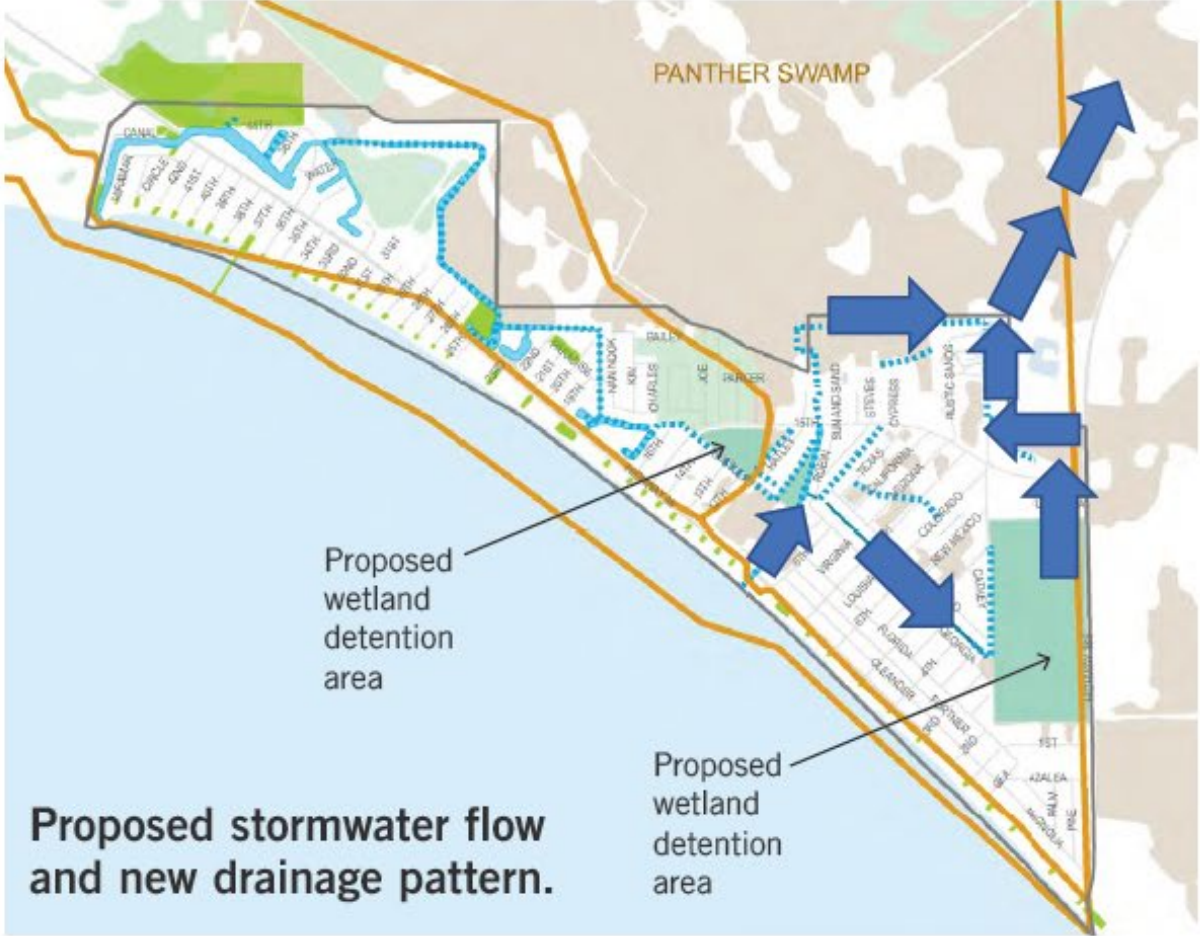
6 | Parker Park

7 | City Pier

The 8th Street Canal allows water to backflow into the city during storms. The storm surge during Hurricane Michael entered 8th Street Canal and flooded inland neighborhoods, causing extensive damage.



1 | Regional Stormwater Flow

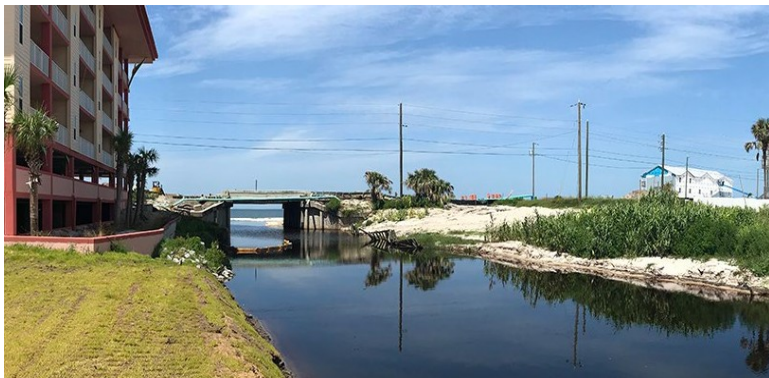


Stormwater from neighborhoods east of 15th Street currently moves toward the 8th Street Canal and discharges to the Gulf of Mexico, *left*. The proposed system directs stormwater to wetland detention areas (when needed) to balance flow through the large box culvert into Panther Swamp, *right*.

2 | 8th Street Canal

Illustration of Proposed Design Concept

Reversing the flow of stormwater north to Panther Swamp presents the opportunity to safely close the 8th Street Canal and create beach access under Hwy 98 for pedestrians, bicyclists, golf carts and paddlers.



2 | 8th Street Canal

Concept Plan of Proposed Design Concept

Closing the canal can increase resilience to flooding in storm events, eliminate tannic outfall into the gulf, and present new opportunities for recreational features and ecological enhancements.



3 | Wetland Parks

Diagram of Proposed Design Concept

Vacant wetland properties located along the stormwater network can be enhanced to hold excess stormwater during rain events.

The wetlands also provide recreation opportunities for wildlife watching, walking or biking along street edges and boardwalk paths.



3 | Wetland Parks

Illustration of Proposed Concept



3 | Wetland Parks

Concept Plans of Proposed Design Concept



The concept plans were prepared with assistance from the National Park Service - Rivers, Trails & Conservation Assistance Program.

4 | Under the Palms Park

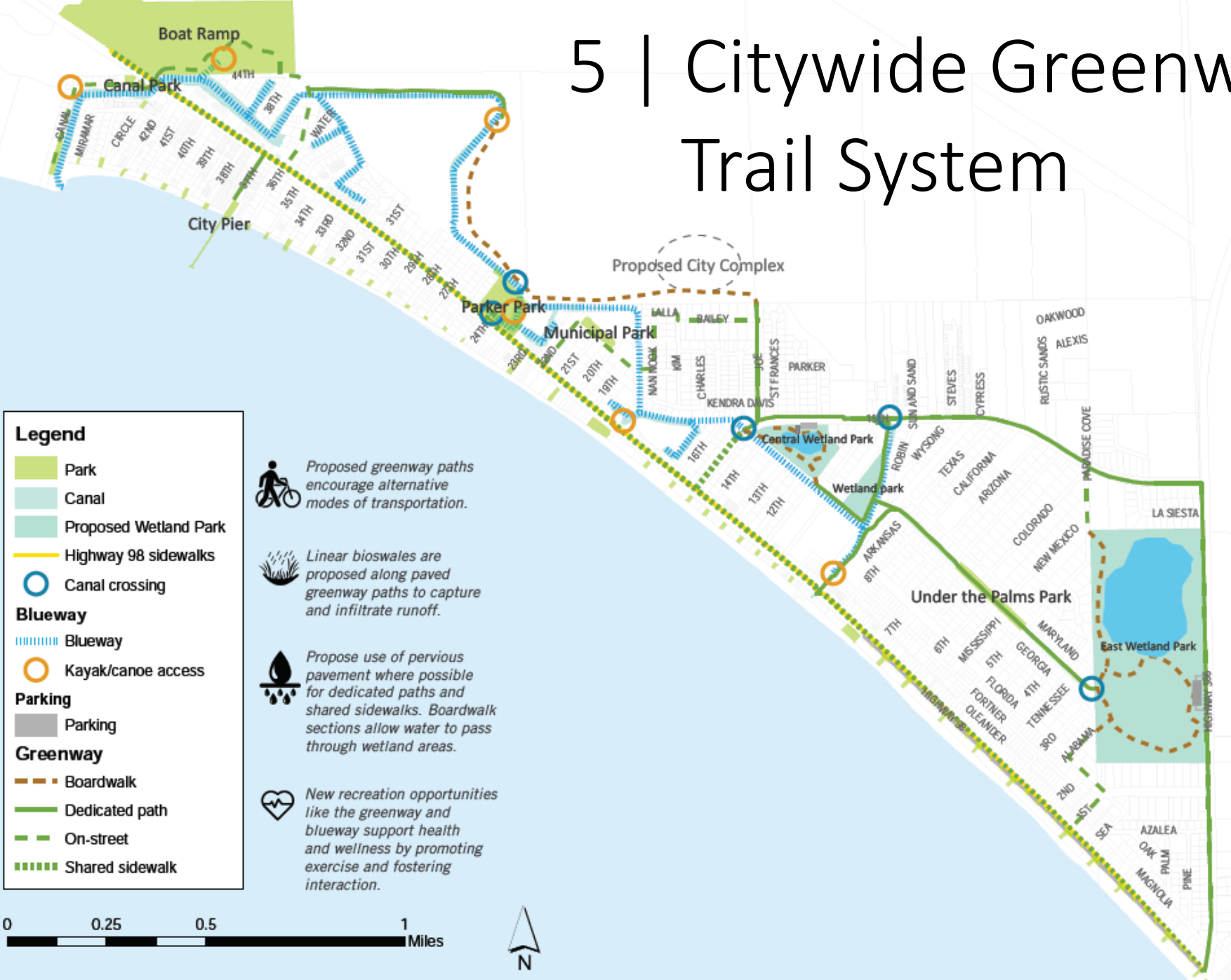
Diagram of Proposed Design Concept

Extend the existing walking path to provide safe, off-street connections for pedestrians and bicyclists between neighborhoods east and west of the park.

Greenspaces along the path accommodate amenities such as pollinator gardens, native plantings, outdoor art and fitness stations.



5 | Citywide Greenway-Blueway Trail System



Legend

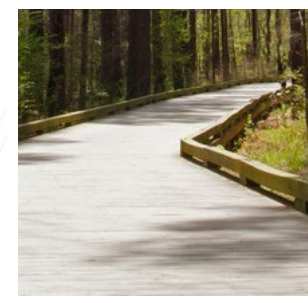
- Park
- Canal
- Proposed Wetland Park
- Highway 98 sidewalks
- Canal crossing
- Blueway**
- Blueway
- Kayak/canoe access
- Parking**
- Parking
- Greenway**
- Boardwalk
- Dedicated path
- On-street
- Shared sidewalk

Proposed greenway paths encourage alternative modes of transportation.

Linear bioswales are proposed along paved greenway paths to capture and infiltrate runoff.

Propose use of pervious pavement where possible for dedicated paths and shared sidewalks. Boardwalk sections allow water to pass through wetland areas.

New recreation opportunities like the greenway and blueway support health and wellness by promoting exercise and fostering interaction.



Boardwalk.



Dedicated path.



On-street path.



Shared sidewalk.



Blueway.



5 | Citywide Greenway-Blueway Trail System



Wildlife watching destinations.



Illustration of greenway path adjacent to canal.



Boat launch, docks and tie-up areas.



Example of a dedicated multimodal greenway path.



Canoeing and kayaking.



Safe canal crossings.

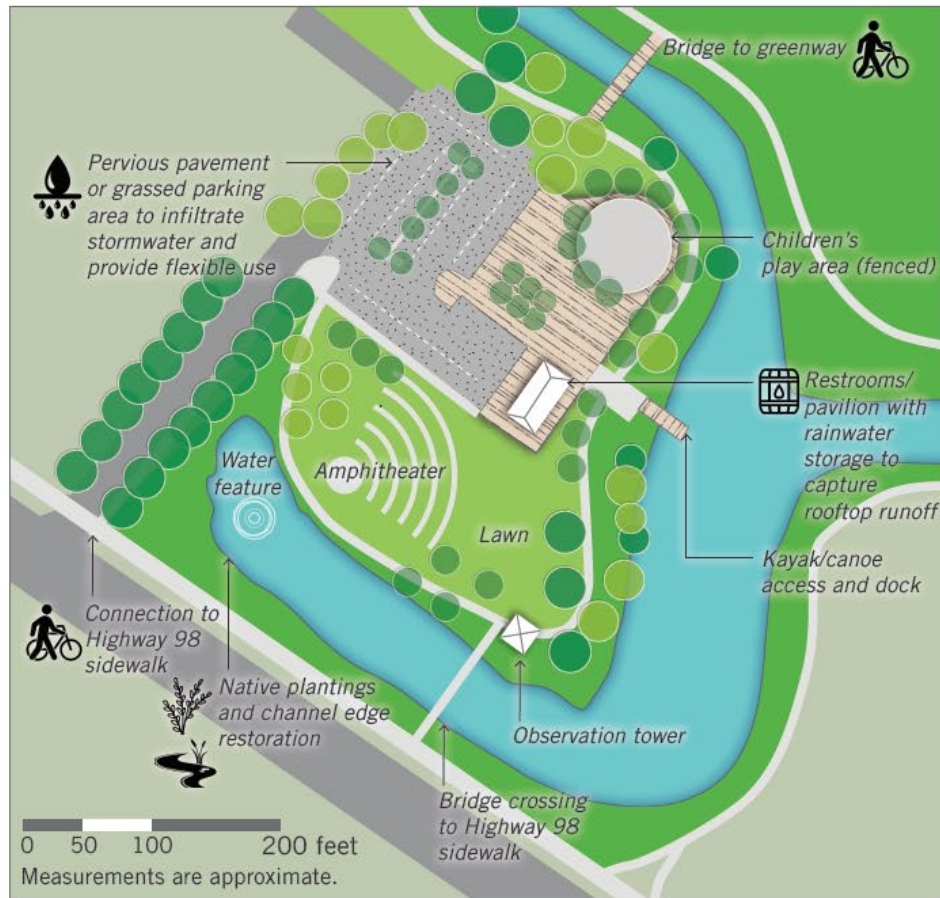


Example of a separated greenway along two-lane highway with a grass swale to increase safety.



Illustration of boardwalk path in wetland area.

6 | Parker Park Restoration



Option A

Option A plan for Parker Park includes new features within the existing canal configuration. Because the canal includes wetland area, altering the current canal requires an application and permitting process.



Option B

Option B plan for Parker Park closes part of the canal to enlarge entry and lawn area. If permitting to shorten the canal is approved, the park will be able to expand uses to include larger events.

7 | City Pier

Expand public gathering spaces and enhance amenities by the pier entrance.

Expanded beach frontage for public and commercial uses, such as restaurant, retail (bait and tackle or gift shop), educational and exhibit space (Hurricane Michael Education Exhibit and Memorial).

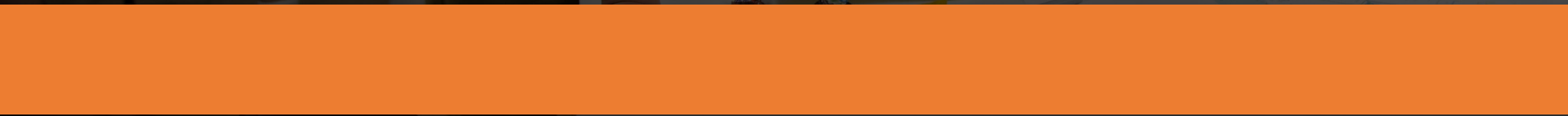
Allow for mixed use along the 37th Street entry to create destination for residents and visitors.

A circulation plan and parking to accommodate vehicles, bicycles and golf carts.





Accomplishments





Get Involved

