

Beazer East, Inc.

Former Koppers Wood-Treating Site – Carbondale, Illinois

Soil Removal and Surface Cover Remediation Project

Weekly Report #8: 11/30/20 – 12/06/20



**Soil Removal and Surface Cover
Former Koppers Wood-Treating Site
Carbondale, IL**

WEEKLY PROGRESS REPORT

Reporting Period: Monday, November 30th, 2020 to Sunday, December 6th, 2020

Progress Meeting Date: Tuesday, December 1st, 2020

1.0 Weather Conditions

Date		Conditions	Wind	Precipitation (in)
Monday	11/30/20	Snow/Overcast, 31-40 °F	11.6/NNW	0
Tuesday	12/1/20	Clear, 21-43 °F	5.8/NNW	0
Wednesday	12/2/20	Partly Cloudy, 19-52 °F	4/ESE	0
Thursday	12/3/20	Partly Cloudy, 28-45 °F	4.9/NE	0.05
Friday	12/4/20	Partly Cloudy, 28-51 °F	3.8/ESE	0
Saturday	12/5/20	Partly Cloudy, 29-57 °F	3.1/N	0
Sunday	12/6/20	Not On-Site		0
Week Total				0.05
Site Cumulative				8.46

2.0 Health & Safety

Manhours Completed this Period: 818

Manhours Completed to Date: 3958

Notes

Day	Tailgate Topic(s)
Monday	Winter advisory, discussion on proper layers and keeping warm during cold temperatures
Tuesday	Winter weather appropriate clothing
Wednesday	Awareness of truck traffic between Soil Removal Area 1 and Surface Cover Area 3
Thursday	Jobsite communication and housekeeping
Friday	Trip hazards from geotextile placement in Surface Cover areas
Saturday	Daily inspection of heavy equipment
Sunday	-

3.0 ENTACT Work Activities Summary

Monday – November 30, 2020
Continued geotextile and general fill placement in the excavated portion of Soil Removal Area 1.
Tuesday – December 1, 2020
Completed geotextile and general fill placement in the excavated portion of Soil Removal Area 1. Stockpiled general fill for remaining phase of Soil Removal Area 1 (wetlands area). Touch up work was performed on the key-in along the southern boundary of Surface Cover Area 3.
Wednesday – December 2, 2020
Continued to import and stockpile fill for next phase of Soil Removal Area 1. Began placement of general fill in Surface Cover Area 3. Placed filter sock around Soil Removal Area 4. Began pumping contact water out of Soil Removal Area 2 (water pumped to on-site wastewater treatment plant (WWTP) with sediments removed via a filter bag).
Thursday – December 3, 2020
Continued to import and stockpile fill for next phase of Soil Removal Area 1. Continued placement of general fill in Surface Cover Area 3. Geotextile was placed along the ditch in Surface Cover Area 3. A ditch plug was placed in the western end of the ditch running through the western portion of Surface Cover Area 1.
Friday – December 4, 2020
Continued to import and stockpile fill for next phase of Soil Removal Area 1. Continued placement of general fill in Surface Cover Area 3. Pumped surface rainwater from unexcavated ditches in Surface Cover Area 1 (water pumped to an on-site location outside of the work areas for infiltration).
Saturday – December 5, 2020
Continued placement of general fill in Surface Cover Area 3 and began placement of geotextile and general fill in Surface Cover Area 2 in areas where no change to grade was made during subgrade preparation. Pumped surface rainwater from unexcavated ditches in Surface Cover Area 1 (water pumped to an on-site location outside of the work areas for infiltration). Pumped contact water out of Soil Removal Area 2 (water pumped to on-site wastewater treatment plant (WWTP) with sediments removed via a filter bag). Began excavation of the wetlands portion of Soil Removal Area 1 and stockpiled material for load out.
Sunday – December 6, 2020
Not On-Site

4.0 ENTACT Subcontractors

Date	Subcontractor/Vendor/ Third Party	Work Activity
12/1/2020	Shawnee Professional Services	Surveyed key-in along southern border of Surface Cover Area 3
12/3/2020	Fabick CAT	Performed repairs on ENTACT equipment
12/4/2020	Fabick CAT	Performed repairs on ENTACT equipment

5.0 ENTACT Deliveries

Equipment - Demobilization		
Date	Description	Quantity
11/30/2020	Denis Cimaf Hydraulic Mulcher	1

Material Import – Current Week		
Date	Description	Quantity
11/30/2020	General Fill	1175.19 tons
12/1/2020	General Fill	1719.1 tons
12/2/2020	General Fill	1217.79 tons
12/3/2020	General Fill	1640.99 tons
12/4/2020	General Fill	1931.52 tons
12/5/2020	General Fill	1176.63 tons

Material Import – To Date	
Description	Quantity
General Fill	19806.84 tons
CA-2	1886.14 tons
Demarcation Fabric	405000 SF
Filter Sock	10230 LF
RipRap-1	133.37 tons

6.0 Material Export

No material exported this week.

Material Export – To Date	
Description	Quantity
Impacted Soils	17721.50 tons

7.0 Construction Quality Control

See Attached Reports and Logs:


- Progress Photos
- Progress Map
- Current Project Schedule



8.0 Request for Information (RFIs)

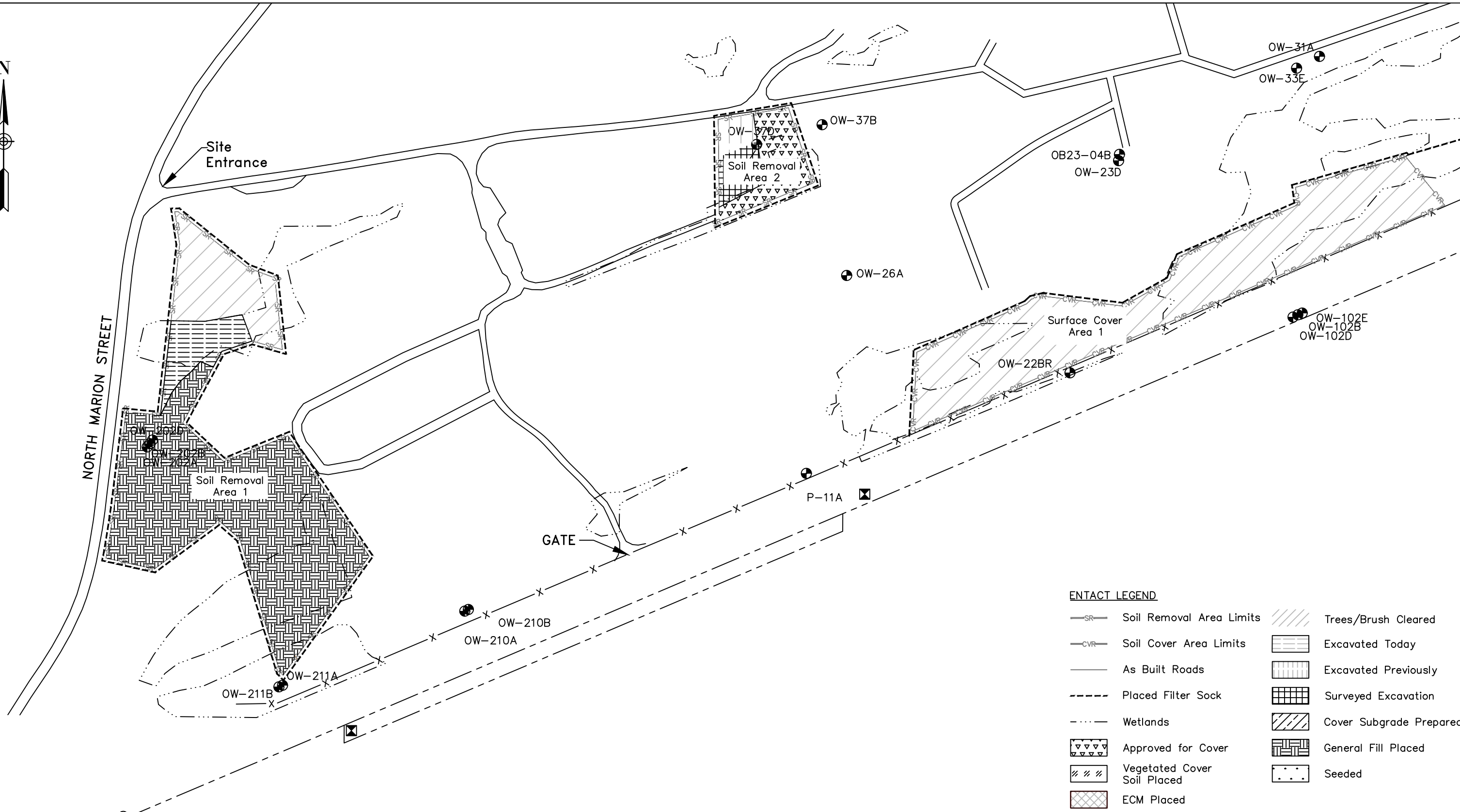
- RFI 001 – Stabilized Construction Entrance Aggregate (Approved)
- None pending

9.0 Change in Conditions

- None

Picture Number	1	
Date	12/1	
Direction	NE	
Description: Grading general fill placed over Soil Removal Area 1. As seen from N Marion St northbound.		
Picture Number	2	
Date	12/2	
Direction	NE	
Description: Stockpile of general fill for next phase of Soil Removal Area 1 backfill.		
Picture Number	3	
Date	12/3	
Direction	S	
Description: Geotextile fabric placed in ditch in Surface Cover Area 3.		

Picture Number	4	
Date	12/4	
Direction	SE	
Description: Grading general fill placed on Surface Cover Area 3.		
Picture Number	5	
Date	12/5	
Direction	W	
Description: Excavation of wetlands area in Soil Removal Area 1.		



ENTACT LEGEND

Soil Removal Area Limits	Trees/Brush Cleared
Soil Cover Area Limits	Excavated Today
As Built Roads	Excavated Previously
Placed Filter Sock	Surveyed Excavation
Wetlands	Cover Subgrade Prepared
Approved for Cover	General Fill Placed
Vegetated Cover Soil Placed	Seeded
ECM Placed	

REV	DATE	BY	CHK'D	APR'VD	DESCRIPTION

PREPARED FOR:
BEAZER EAST
PITTSBURGH, PA

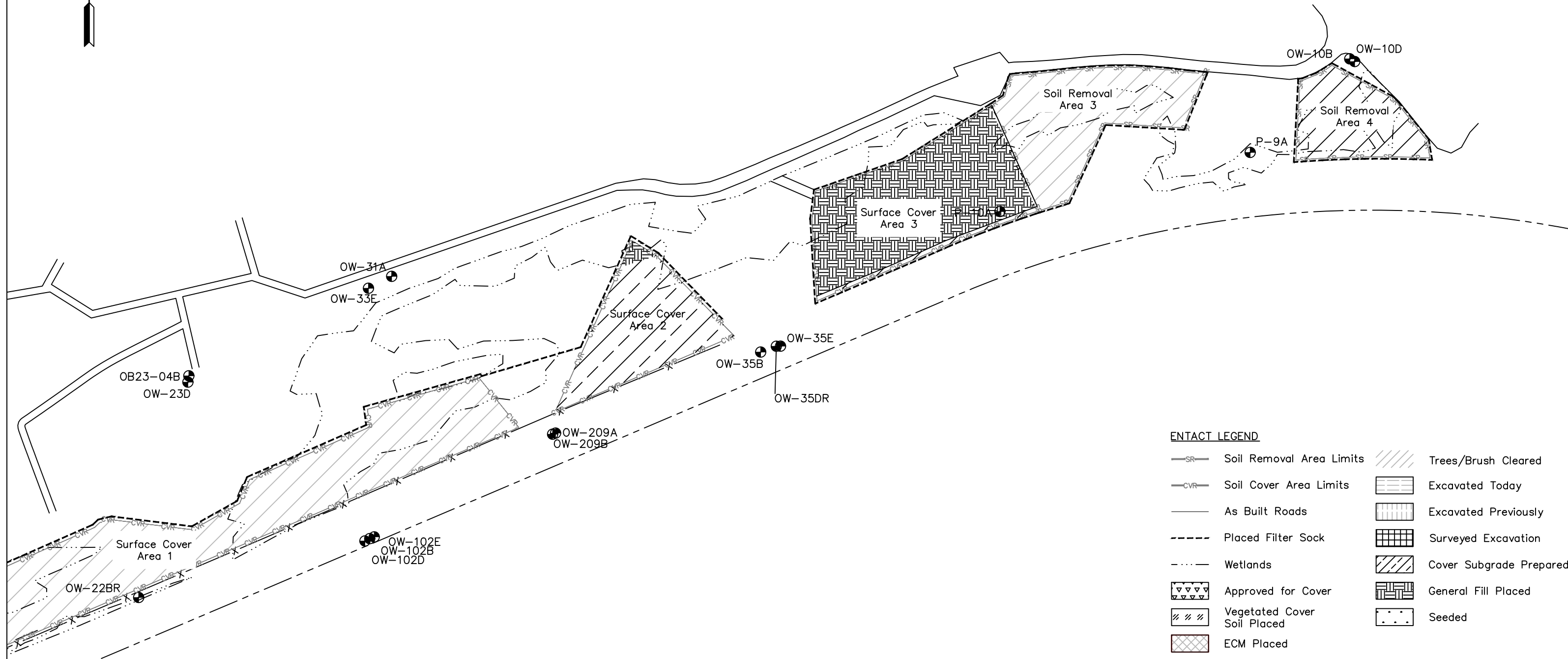
SCALE: 1"=200'

ENTACT

DRAWING NAME: **Daily Progress Figure – Site West**

PROJECT NAME & LOCATION: **SOIL REMOVAL AND SURFACE COVER REMEDY
 FORMER KOPPERS WOOD-TREATING SITE
 CARBONDALE, IL**

DRAWN BY	K. KLIPPSTEIN	APPROVED BY	T. MORAN	REV	0	SHEET NO.
DATE	12/05/2020	DATE		PROJECT NO.	E8658	1 OF 2

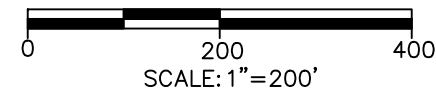


ENTACT LEGEND

- SR— Soil Removal Area Limits
- CVR— Soil Cover Area Limits
- As Built Roads
- - - - Placed Filter Sock
- · - · - Wetlands
- ▾▾▾▾ Approved for Cover
- /// Vegetated Cover Soil Placed
- ▣ ECM Placed
- ▨▨▨▨ Trees/Brush Cleared
- ▧▧▧▧ Excavated Today
- ▩▩▩▩ Excavated Previously
- Surveyed Excavation
- ▤▤▤▤ Cover Subgrade Prepared
- ▩▩▩▩ General Fill Placed
- · · · Seeded

REV	DATE	BY	CHK'D	APR'VD	DESCRIPTION

PREPARED FOR:
BEAZER EAST
PITTSBURGH, PA



DRAWING NAME						Daily Progress Figure – Site East					
PROJECT NAME & LOCATION						SOIL REMOVAL AND SURFACE COVER REMEDY FORMER KOPPERS WOOD-TREATING SITE CARBONDALE, IL					
DRAWN BY	K. KLIPPSTEIN	APPROVED BY	T. MORAN	REV	0	SHEET NO.					
DATE	12/05/2020	DATE		PROJECT NO.	E8658	2 OF 2					

Beazer East, Inc.
Soil Removal and Surface Cover Remedial Design
Former Koppers Wood-Treating Site
Carbondale, Illinois

