



# WORKFORCE WEBINAR SERIES

## Role of State and Local Workforce Boards

Office of Wastewater Management

Office of Water

U.S. Environmental Protection Agency

September 24, 2020

**We will start in a couple minutes.  
Thank you.**



# WORKFORCE WEBINAR SERIES

## Role of State and Local Workforce Boards

Office of Wastewater Management

Office of Water

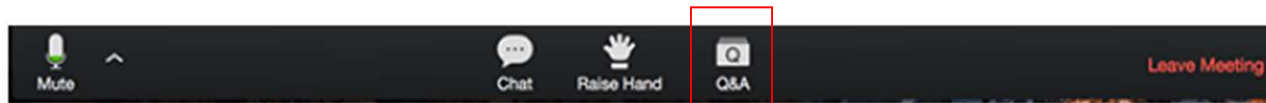
U.S. Environmental Protection Agency

September 24, 2020

This webinar is sponsored by EPA's Office of Wastewater Management. The opinions expressed in this webinar are those of the guest speaker(s). They do not reflect EPA policy, endorsement, or action, and EPA does not verify the accuracy or science of the contents of the presentation.

## Webinar Logistics

- This webinar is being recorded
- Participants will be in listen-only mode
- To submit a question, use the Q&A function
- Presenters will monitor these questions and respond to as many as possible during the “Q&A” session at the end of the presentation.



- Webinar slides and recording information will be sent out to all participants following the webinar

## Having Audio Difficulties?

- Call in to any of these phone numbers:

+1 253 215 8782 <or>

+1 312 626 6799 <or>

+1 888 788 0099 (Toll Free) <or>

+1 877 853 5247 (Toll Free)

**Webinar ID: 921 6270 9240**



## Opening Poll: Please indicate the sector that you work in:

- Utility
- State or Local Government
- Federal Government
- Consultant
- Academia/Educator
- Other

If you do not see a poll window pop up, please use the **Chat function** to type in your answer.

## Water Sector Workforce @ EPA

- Reminders:
  - Check out our website for resources and updates:  
<https://www.epa.gov/sustainable-water-infrastructure/water-sector-workforce>
  - Stay tuned for information on our next webinar (tentatively scheduled for December 2020). If you are registered for this webinar you are automatically on the email list for future webinars!
  - Check out the recordings of past webinars in this series on the Workforce Webinar Flyer. This flyer will be sent out post-webinar.

# Role of State and Local Workforce Boards

Deborah Vacs Renwick, U.S. EPA Office of Ground Water and Drinking Water

## Speakers:

- **Ron Painter**-President and CEO, National Association of Workforce Boards
- **Katie Condit**-CEO, WorkForce Central (Tacoma, WA)
- **Nathe Lawver**-Chair, Workforce Development Pipeline Committee, Tacoma/Pierce County EDB & LiUNA Local 252

September 24, 2020



## Today's Speakers



**Ron Painter**- President and  
CEO, NAWB



**Katie Condit** - CEO, WorkForce  
Central (Tacoma, WA)



**Nathe Lawver**- Chair,  
Workforce Development  
Pipeline Committee,  
Tacoma/Pierce County  
EDB & LiUNA Local 252



# About NAWB

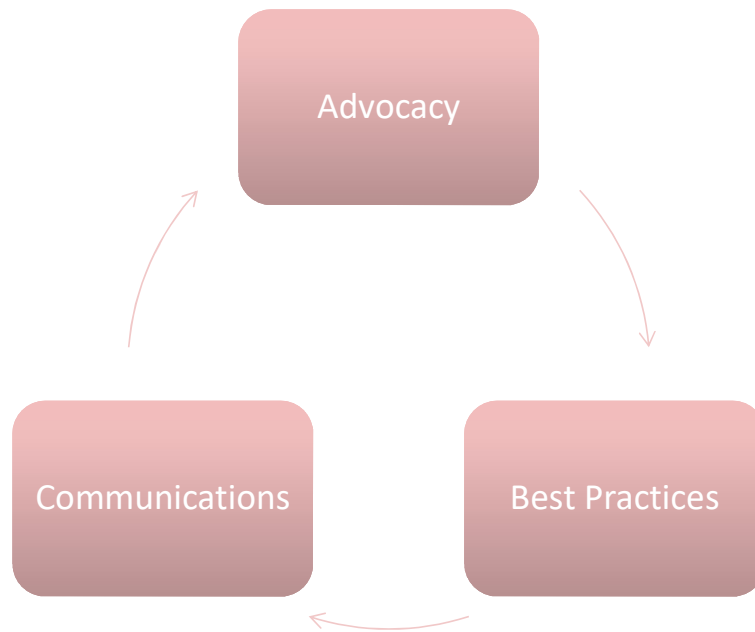
**NAWB is the national advocate for workforce development boards and American Job Centers**

- Represents 550 Workforce Development Boards and their 12,000+ business members

**NAWB's mission is to support its members through a comprehensive program of:**

- advocacy,
- training and technical assistance,
- communication, and
- the promotion of strategic partnerships for the advancement of our nation's workforce

# NAWB at Work



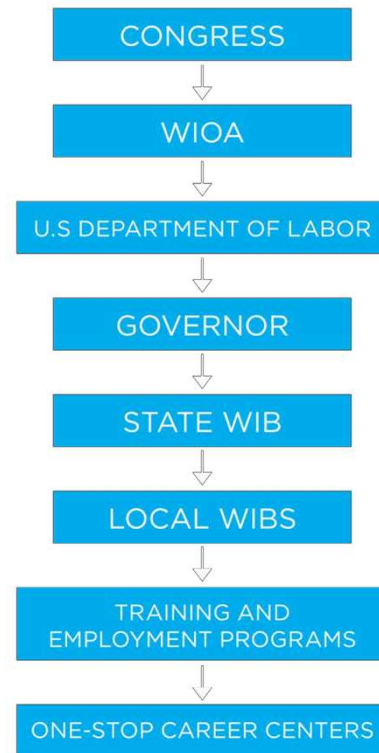
## Business Alliance



### The NAWB Industry Partners Program

- **Builds** the relationship between industry and the workforce development boards to meet the diverse labor needs of the industry;
- **Empowers** workforce development boards to connect potential employees to education and training that leads to gainful employment within identified industries; and
- **Collaborates** on efforts to create effective local and state industry-workforce board partnerships

## The Public Workforce System



So what is a  
workforce  
development  
board



This Photo by Unknown Author is licensed under CC BY-SA

State v Local  
Board

Labor  
Market Data

Convener

# WDB Impact

## Reach

- More than 1 in 12 American workers will touch our system
- More than 1.2 million people received personalized services and almost 50 percent with occupational credentials

## Outcome

- More than 80% of the job seekers whom NAWB works with will be employed within 6 months of engagement



# What are WDB responsibilities?





# How are WDB members selected?

In appointing the board, the Chief Local Elected Official:	
Shall Include	<ul style="list-style-type: none"><li>• Business (51%)</li><li>• Workforce – Labor (20%)</li><li>• Adult Education and Literacy</li><li>• Higher Education</li><li>• Government &amp; Economic Development</li><li>• Wagner-Peyser</li><li>• Vocational Rehabilitation</li></ul>
May Include	<ul style="list-style-type: none"><li>• Community Based Organizations</li><li>• Youth Organizations</li><li>• Transportation</li><li>• Housing Specialists</li><li>• Philanthropic Organizations</li></ul>

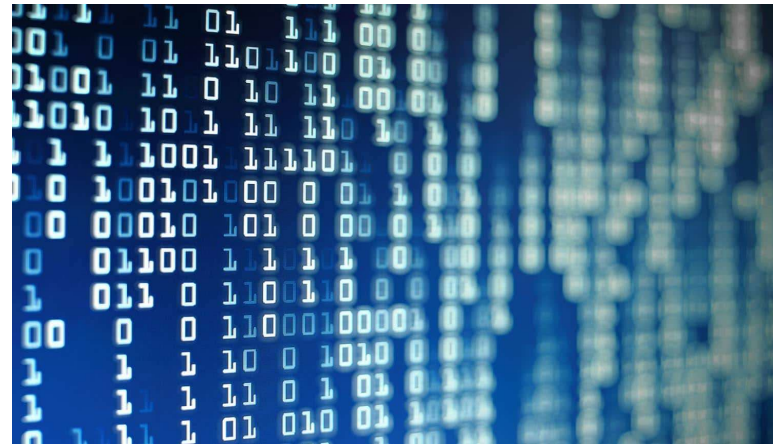
# How to engage your local workforce development board

- **Business-to-Business**
- **Board Membership**
- [www.workforceinvestmentworks.com](http://www.workforceinvestmentworks.com)
- [www.nawb.org](http://www.nawb.org)



# Data: What do the Numbers Say?

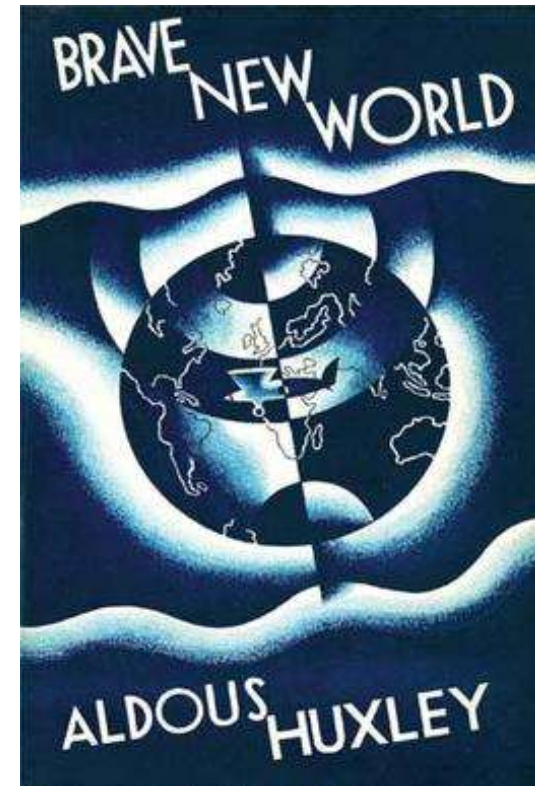
- Who's Hiring?
- What Skills are Needed
- Who is Unemployed?
  - What skills do the unemployed already have?
  - What will be required to get them back to work?
  - How much training will be necessary?



# Change is No Longer Coming... It is Here

## ***Making Tech Inclusive***

- Expansion of broadband
- Access to tech at One-Stop Centers
- Programs to provide job seekers with tech



# Building a System

- eLearning
- mLearning
- Credentials
- Micro-badging
- Proficiency
- Interoperable Learning Record





# Building a System

- Re-shoring the supply chain
- Anyone remember February 2020?
- State and local budgets
- Where will the funds come from?
  - \$185M in House Approps



## More Info in Workforce Development?



Interviews with public and private sector leaders in workforce development, education, business and economic development on key workforce issues and investment strategies to help America compete globally.

Check us out in iTunes or Google Play & talk to us on twitter @podcastwfc



**Katie Condit** - CEO, WorkForce  
Central (Tacoma, WA)



# HOW WORKFORCE DEVELOPMENT WORKS



A strong economy should work for everyone.



Employers need access to workers with the right skill sets. Workers need access to education and training programs to build in-demand skills.



## But what happens when these two needs don't match up?



Workforce Development Councils monitor the entire local economy to find these gaps...and convene partners to **catalyze change**.



Like Air Traffic Controllers, it is our job to monitor, measure and lead the **whole system**.

We partner with

**businesses**



**educators**

**job seekers**



**policy makers**

**organized labor**



...and **coordinate** the  
WorkSource Pierce  
**service delivery system**



...to foster **data-driven** decision-  
making and implement workforce  
solutions **that work**.

# The Role of the WorkForce Development Board

## Services for Job Seekers

Facilitate and fund organizations to provide innovative training, coaching and job connection opportunities for youth and adults

## Services for Employers

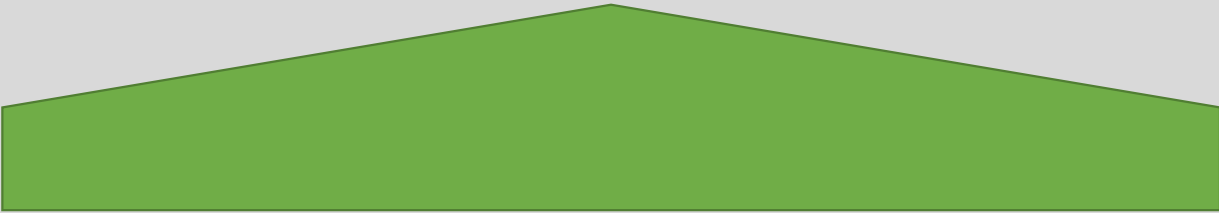
Provide employee recruitment and retention services for local businesses and employers

## Education & Training

Develop, support, and grow career education and training programs

## Data & Research

Evaluate workforce systems, trends and outcomes to drive regional priorities

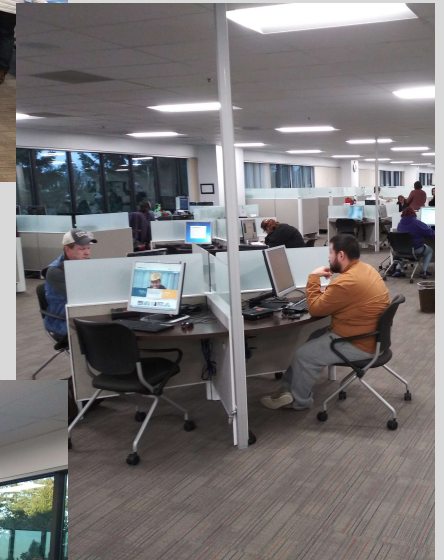


## Convening and Alignment

Bring together stakeholders from across sectors to align, co-design and ensure we're investing in and creating high-impact, equitable workforce development systems



# Our Work in Practice



## WorkForce Central Governance Structure





**Katie Condit**

CEO, *WorkForce Central*

[kcondit@workforce-central.org](mailto:kcondit@workforce-central.org)

**Connect with us**

**Web:** [www.workforce-central.org](http://www.workforce-central.org)

**Twitter:** [@wkfccentral](https://twitter.com/wkfccentral)

**Facebook:** [facebook.com/workforcecentral](https://facebook.com/workforcecentral)



Nathe Lawver- Chair,  
Workforce Development  
Pipeline Committee,  
Tacoma/Pierce County EDB &  
LiUNA Local 252



Prepare youth for entry level positions in Green Jobs

Diverse and inclusive cohort of High School Students over a 6-week period

Introduce students and family to job opportunities in Environmental Services





# Certifications and skills learned

- CPR/First Aid card
- Flagger's card
- CESCL (Certified Erosion and Sediment Control Lead) certification
- HAZWOPER certification
- OSHA 10 certification
  
- Chain of custody and water sampling techniques

Earned High School credits towards their  
Occupational Education



## Other things

- Lunch and learns about apprenticeship opportunities
- Hands on work building rain gardens on Tacoma Public School sites
- Storm water management techniques by the usage of waddles and other temporary filtration systems used on job sites
- Tours and a better understanding of the storm water management in Tacoma
- Students received a stipend through a City of Tacoma summer employment grant
- These certifications could be used to get on dispatch lists for hiring halls, environmental work dispatched at \$25 +/-hour with benefits



# Question & Answer Period

*Please submit text questions using your webinar dashboard*



Mute



Chat



Raise Hand



Q&A

Leave Meeting

## Closing Poll #1

On a scale of 1-10, with 10 being the best score and 1 being the worst, how would you rate today's webinar?

If you do not see a poll window pop up, please use the **Chat function** to type in your answer.

## Closing Poll #2

Finally, what other topics would you like to see covered in subsequent webinars?

*Please type a brief response in the chat box.*





Thank you!

