

# Democratizing Geospatial Technology: A Model for Providing Technical Assistance in Community Based Participatory Mapping to Environmental Justice Stakeholder Communities



David Padgett leading a Deep South Center for Environmental Justice community asset mapping training in Gulfport, MS. Credit: Deep South Center for Environmental Justice.

Activate Windows  
Go to PC settings

**Dr. David A. Padgett**  
Associate Professor of  
Geography  
Tennessee State University  
Nashville, Tennessee  
Research Assistant – Olivia Harbison



# 1. Defining “Community Assets”

What are the good land uses in our community?

How can we replicate such good land uses?

Are there land uses that we might see as negative that could represent opportunities?



Community Asset Mapping Training: Buzzard Point Neighborhood – Washington, DC

## 2. “No Tech” Community Walk Through

Mental mapping exercise during which community stakeholders determine the objectives and goals of the community asset mapping project. Locations of desirable land uses are identified without global positioning systems (GPS) or geographic information systems (GIS) support.





# Community Asset Mapping with ArcGIS Online – Buzzard Point Neighborhood – Washington, DC – September 2018

ArcGIS Syphax Gardens New Map Create

Details Add Edit Basemap Save Share Print Measure Bookmarks Find address or place

About Content Legend

### Legend

Community Asset Mapping Spreadsheet - Syphax

- Carron Baptist Church
- Friendship House
- Greenleaf Park
- James Creek Community Ctr
- James Creek Playground
- King Greenleaf Center
- Leos
- Metro Bus Stop
- Nats Stadium
- South Capital Street
- Other

Esri.com | ArcGIS Marketplace | Help | Terms of Use | Privacy | Contact Esri | Report Abuse

M-NCPPC, VITA, Esri, HERE, Garmin

# Community Asset Mapping Data Collection with Global Positioning Systems (GPS)

## Community Asset Mapping Data Collection Sheet

Name of Person Collecting Data CSED      Date WEDNESDAY, MAY 29, 2019  
 Geographic Area Covered \_\_\_\_\_ GPS Unit Brand/Model Number \_\_\_\_\_  
 Datum \_\_\_\_\_ GPS Unit Serial Number \_\_\_\_\_

SPECIFIC NAME OF ASSET	GENERAL ASSET DESCRIPTION (Minority-Owned Business, Historical Site, Public Transit, Large Chain Business, Greenspace, Physical Activity, Food, Anchor Institution, Healthcare Facility, Vacant Property, Under-used Property, Other)	ADDRESS/NEAREST INTERSECTION/GENERAL LOCATION	LATITUDE	LONGITUDE	TIME	NUMBER OF SATELLITES	LOG NUMBER
Sanchez Center	Physical Activity	5501 N.Claiborne					1101
MLK Elementary School	School	1611 Caffin Avenue					
Groundworks Rain Garden	Greenspace Park	1901 Caffin Avenue					
Bayou Bienvenue Wetland Triangle Observation Deck	Greenspace Park	5595 Florida Avenue					
Environmental Learning & Research Center at CSED	Education Learning Center	5600 Florida Avenue					
Bush Playground	Recreation	2600 Lamanche Street					



# Community Asset Mapping Data Collection Sheet-Sea Level Rise Project-Lower 9<sup>th</sup> Ward Flood Control

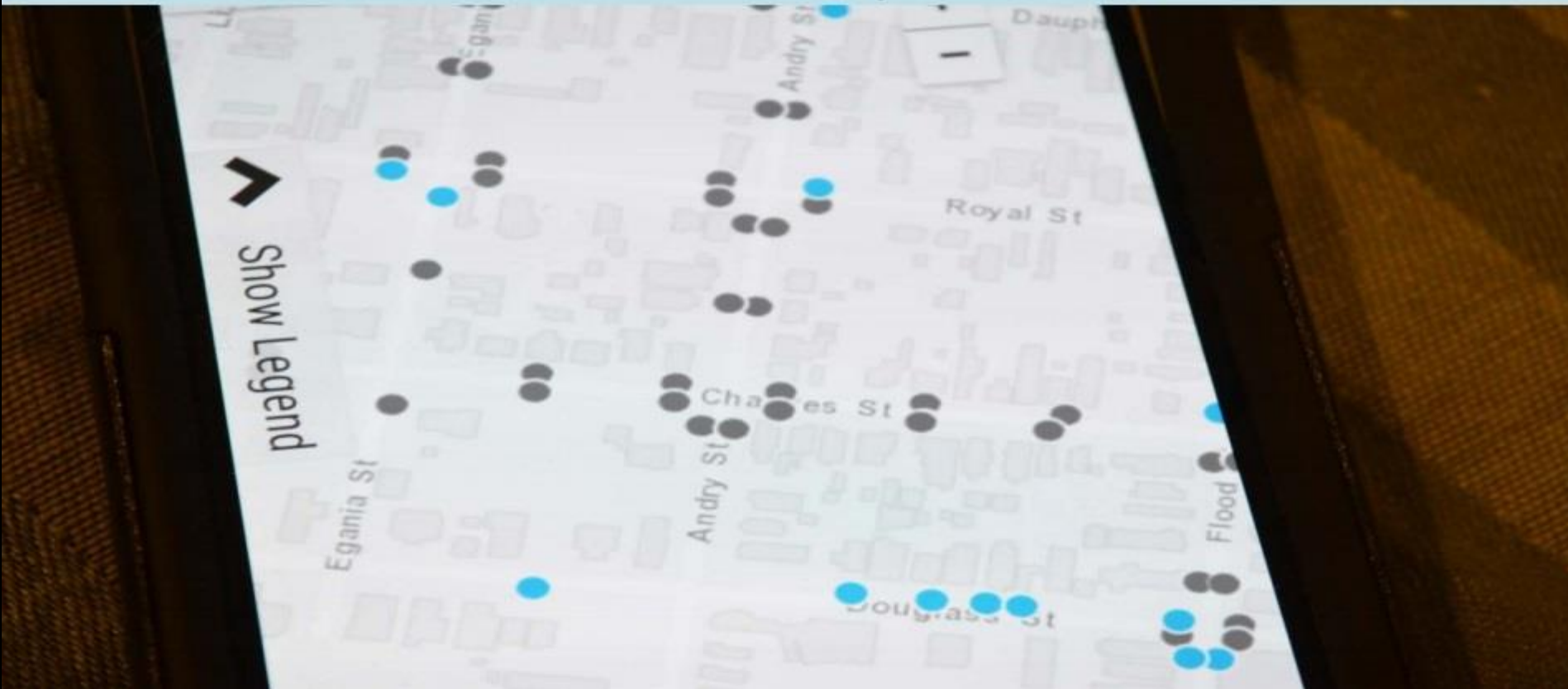
Community Asset Mapping Data Collection Sheet-Sea Rise Project-Lower 9<sup>th</sup> Ward Flood Control

Name of Person Collecting Data Darrell Esnoilt Date 6-23-2011  
 Geographic Area Covered Lower 9th Ward south GPS Unit Brand/Model Number Android ZTE  
 Datum \_\_\_\_\_ GPS Unit Serial Number \_\_\_\_\_

SPECIFIC NAME OF ASSET	GENERAL ASSET DESCRIPTION	ADDRESS/NEAREST INTERSECTION/GENERAL LOCATION	LATITUDE	LONGITUDE	TIME	NUMBER OF SATELLITES	LOG NUMBER
Catch Basin	Tennessee + Desha Cleaned	4900 Block of Urquhart	29.9649339	-90.0225195			
Catch Basin	Tennessee + Reynes Not Cleaned	5000 Block of Urquhart	(29°57'53.2544")	(-90°1'22.5119")	12:01pm		
Catch Basin	Tennessee + Reynes Not Cleaned	5000 Block of Urquhart	29.9644768	-90.0225774			
Catch Basin	Tennessee + Reynes Not Cleaned	5000 Block of Urquhart	29.9644609	-90.0219279			
Catch Basin	Reynes + Tennessee Cleaned	5000 Block of Urquhart	(29°57'52.5860")	(-90°1'18.1911")	12:34pm		
Catch Basin	Reynes + Tennessee Not Cleaned	5000 Block of Urquhart	29.9644200	-90.0218474			
Catch Basin	Reynes + Tennessee Not Cleaned	5000 Block of Urquhart	29.9646646	-90.0217659			
Catch Basin	Reynes + Forstall Cleaned	5014 Urquhart	(29°57'52.7140")	(-90°1'19.3390")	12:31pm		
Catch Basin	Reynes + Forstall Not Cleaned	5013 Urquhart	29.9645394	-90.0215165			
Catch Basin	Reynes + Forstall Not Cleaned	5013 Urquhart	29.9645396	-90.0215563			
Catch Basin	Forstall + Reynes Not Cleaned	5014 Urquhart	(29°57'52.3934")	(-90°1'16.8810")	12:42pm		
Catch Basin	Forstall + Reynes Not Cleaned	5014 Urquhart	29.9643790	-90.0209288			
Catch Basin	Forstall + Reynes Not Cleaned	5013 Urquhart	(29°57'51.9644")	(-90°1'15.2140")	12:41pm		
Catch Basin	Forstall + Lizardi Not Cleaned	5100 Urquhart	29.9643922	-90.0208812			
Catch Basin	Forstall + Lizardi Not Cleaned	5100 Urquhart	(29°57'51.8112")	(-90°1'15.1916")	12:48pm		
Catch Basin	Forstall + Lizardi Not Cleaned	5100 Urquhart	29.9642792	-90.0206074			
Catch Basin	Lizardi + Forstall Not Cleaned	5100 Urquhart	(29°57'51.4764")	(-90°1'13.8324")	12:36pm		
Catch Basin	Lizardi + Forstall Not Cleaned	5100 Urquhart	29.9643164	-90.0205186			
Catch Basin	Lizardi + Forstall Not Cleaned	5100 Urquhart	(29°57'51.5392")	(-90°1'13.8670")	12:36pm		
Catch Basin	Lizardi + Forstall Not Cleaned	5100 Urquhart	29.9642348	-90.0200675			
Catch Basin	Lizardi + Forstall Not Cleaned	5100 Urquhart	(29°57'51.2444")	(-90°1'12.2900")	1:02pm		
Catch Basin	Lizardi + Forstall Not Cleaned	5100 Urquhart	29.9642448	-90.0200198			

Source: Students Rising Above Sea Level Rise Webinar – Deep South Center for Environmental Justice ([www.dscej.org](http://www.dscej.org))

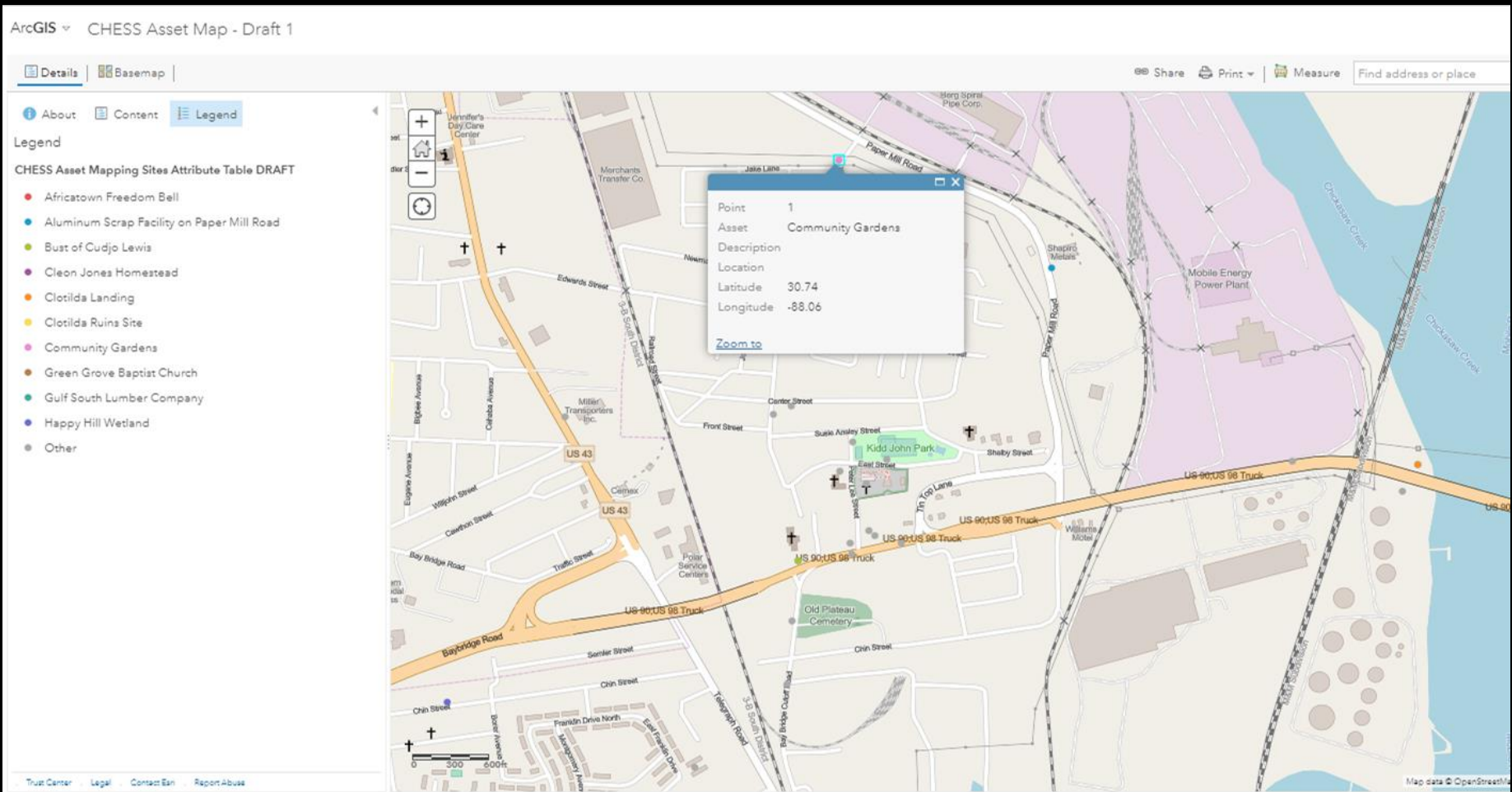
Catch Basins on Andry, Royal, Chartres, and Douglass Streets (**Black Circles – Unclean, Blue Circles Clean**)-From the City of New Orleans



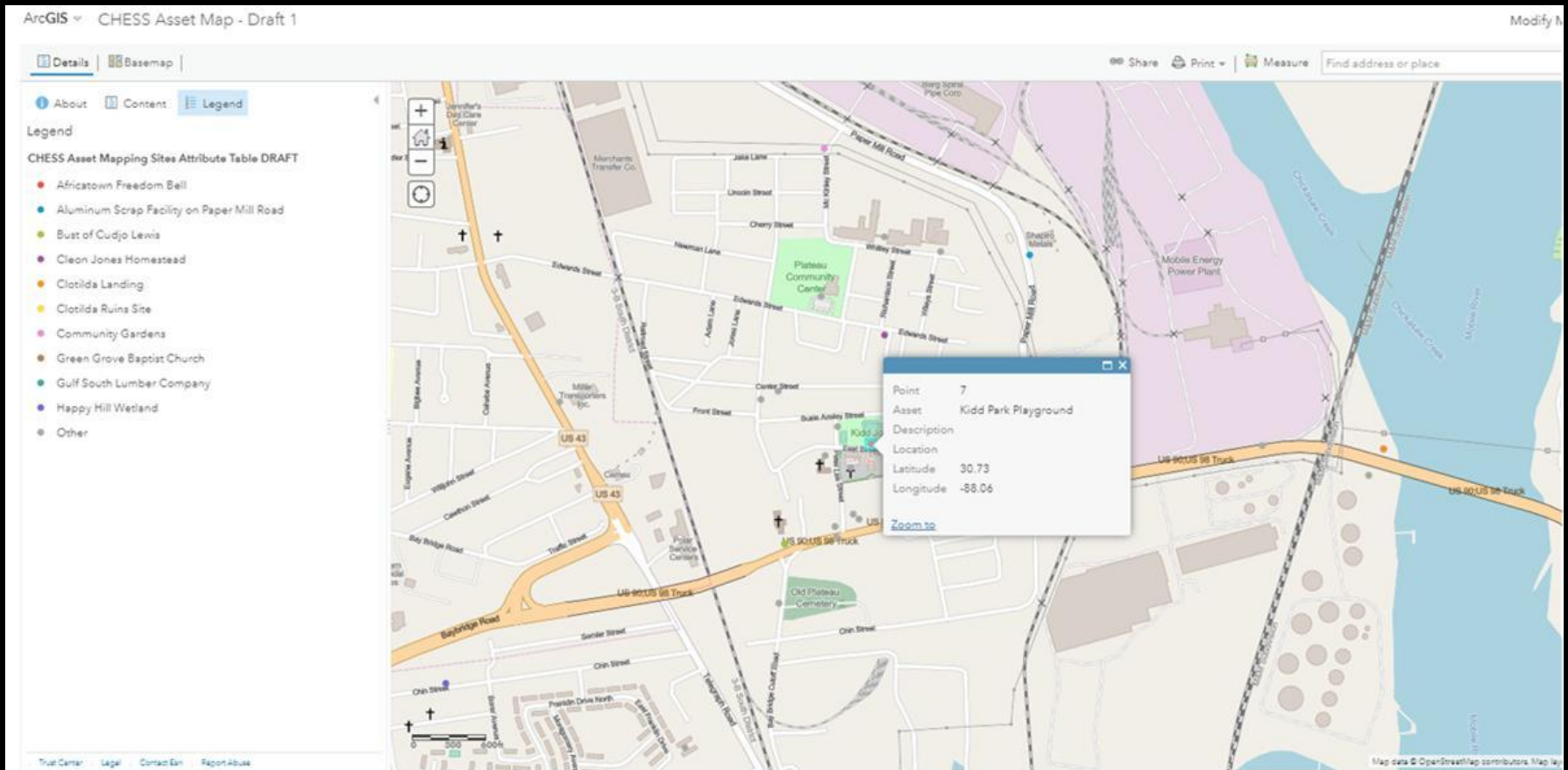
Source: Students Rising Above Sea Level Rise Webinar – Deep South Center for Environmental Justice ([www.dscej.org](http://www.dscej.org))



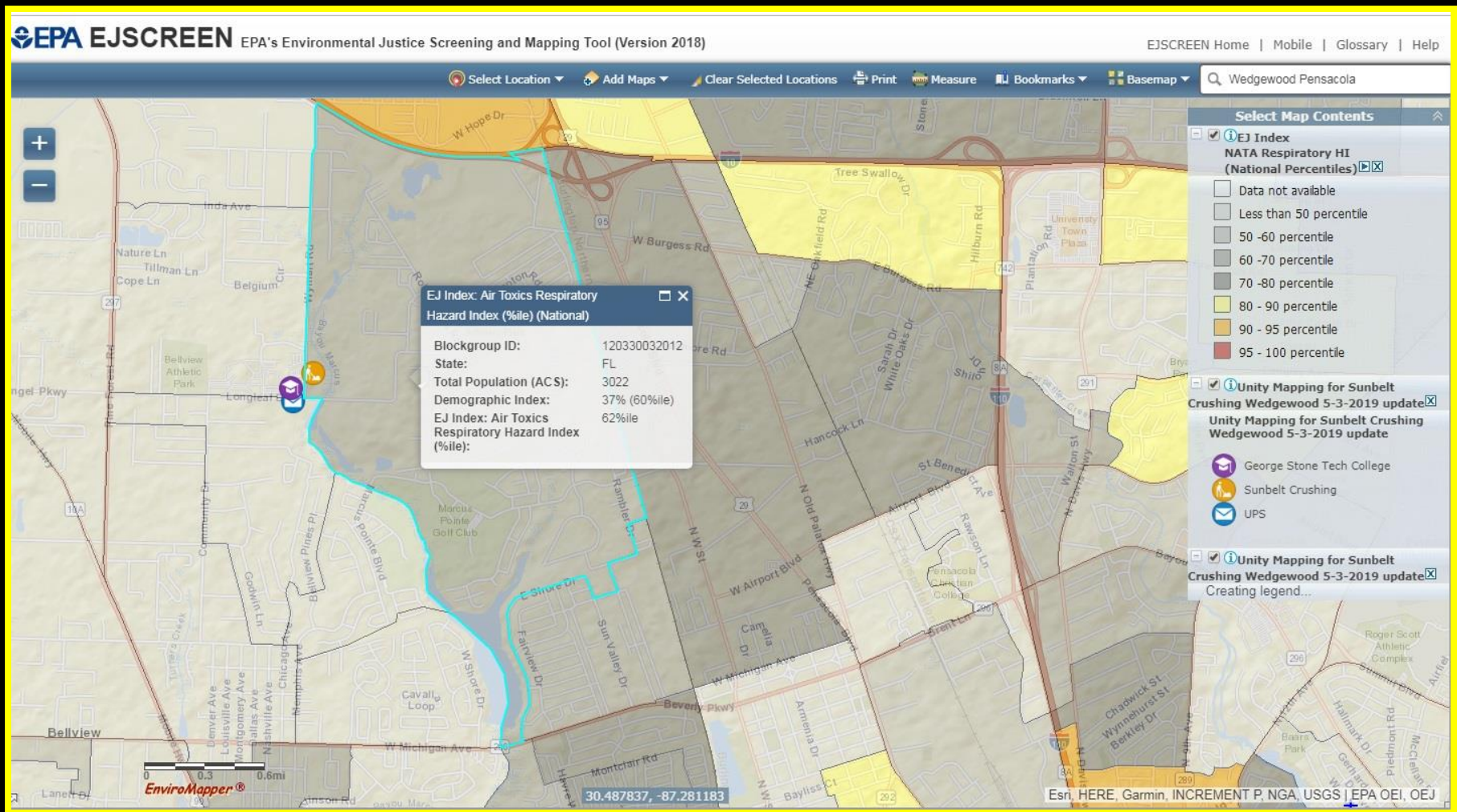
# Community Asset Mapping with ArcGIS: Africatown Community – Mobile, Alabama – May 2019



# Community Asset Mapping with ArcGIS: Africatown Community – Mobile, Alabama – May 2019

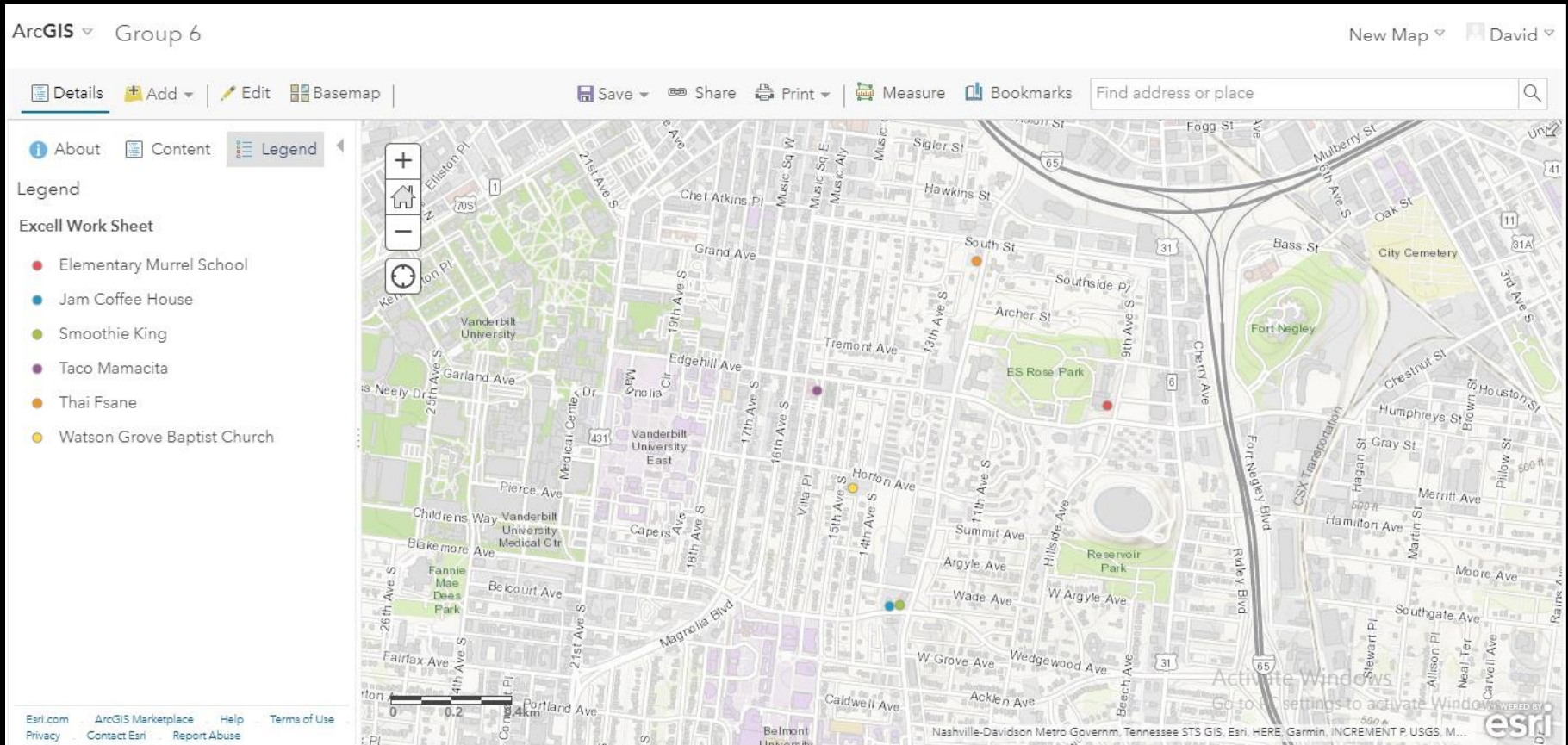


# Community Environmental Risk Mapping with ArcGIS and the Environmental Justice Screening Tool (EJ SCREEN: Wedgewood Community – Pensacola, Florida



# Community Asset Mapping with ArcGIS Online – First Kings (Nashville, TN)

Community assets defined by African American male youth organization.



# Vacant/Under-Utilized Property in an Urban Community – Nashville, TN

**Asset or Eyesore?**



# Community Asset Mapping with ArcGIS Online Story Maps

## Mock community asset mapping exercise. Tennessee State University, Nashville, TN

The screenshot displays the ArcGIS Online Story Map interface. At the top left, the date '11/2/17' and an 'Edit me!' button are visible. The top center features a 'STORY CONFIGURATION' section with 'SAVE', 'SHARE', 'SETTINGS', and 'HELP' buttons, and a status message: 'No unsaved change ; Tour is not shared'. The top right shows 'A story map' with social media icons and the Esri logo.

The main content area is split into two panels. The left panel shows a story map card for 'Boiler Plant' with a thumbnail image and a text description: 'This asset is located at John L. Driver Blvd @ 38th Avenue N (36.16539, -86.83250). Mr. Clevon Jones, the long-time plant manager is looked up to by the youth in the community. He allows teenagers to earn money working odd-jobs at the facility.' The right panel shows a map of the Tennessee State University campus with several red location pins numbered 1 through 8. A tooltip over pin 1 says 'Move me around or change my color' with color selection options. A 'Change Basemap' button is in the top right of the map area.

At the bottom of the map area, there are 'Add', 'Organize', and 'Import' buttons. Below the map is a gallery of eight image thumbnails, each with a red number in the top left corner. The first thumbnail is labeled 'Boiler Plant'. A right-pointing arrow is at the end of the gallery.

The bottom of the image shows a Windows taskbar with the search bar, taskbar icons for Edge, File Explorer, Mail, Word, and Photos, and a system tray with the time '3:40 PM' and date '11/2/2017'.



Dr. David A. Padgett  
Tennessee State University  
Geographic Information Sciences Laboratory  
3500 John Merritt Boulevard – Box 9538  
Nashville, Tennessee 37209  
615-963-5508  
[tsugislab@gmail.com](mailto:tsugislab@gmail.com)