

Beazer East, Inc.

Former Koppers Wood-Treating Site – Carbondale, Illinois

Soil Removal and Surface Cover Remediation Project

Weekly Report #13: 1/11/21 – 1/17/21



**Soil Removal and Surface Cover
Former Koppers Wood-Treating Site
Carbondale, IL**

WEEKLY PROGRESS REPORT

Reporting Period: Monday, January 11th, 2021 to Sunday, January 17th, 2021

Progress Meeting Date: Tuesday, January 12th, 2021

1.0 Weather Conditions

Date	Conditions	Wind	Precipitation (in)
Monday 1/11/21	Partly Cloudy, 19-31 °F	5.1/NNW	0
Tuesday 1/12/21	Clear, 19-48 °F	6.9/SSW	0
Wednesday 1/13/21	Clear, 19-48 °F	6.9/SSW	0
Thursday 1/14/21	Partly Cloudy, 35-58 °F	10.1/SW	0
Friday 1/15/21	Partly Cloudy, 33-36 °F	3.8/NNW	Trace
Saturday 1/16/21	Partly Cloudy, 33-41 °F	6.0/NNW	0
Sunday 1/17/21	Not On-Site		0
Week Total			0
Site Cumulative			10.63

2.0 Health & Safety

Manhours Completed this Period: 660.5

Manhours Completed to Date: 7258.5

Notes

Day	Tailgate Topic(s)
Monday	Inspections of straps and proper lifting procedures
Tuesday	Dressing for the weather and the importance of wearing layers
Wednesday	Proper gloves for any given task
Thursday	Reviewed onsite traffic safety and the site speed limit
Friday	Reviewed site PPE requirements
Saturday	Traffic safety procedures and keeping correct distance from heavy equipment
Sunday	-

3.0 ENTACT Work Activities Summary

Monday – January 11, 2021
Completed loadout of impacted material from Soil Removal Area 3 for transport to Southern Illinois Regional Landfill. Placed geotextile and general fill/vegetative cover in Surface Cover Area 1.
Tuesday – January 12, 2021
Continued excavation of impacted material in Soil Removal Area 4. Impacted material from Soil Removal Area 4 was loaded out for transport to Southern Illinois Regional Landfill. Placed geotextile and general fill/vegetative cover in Surface Cover Area 1.
Wednesday – January 13, 2021
Continued loadout of impacted material from Soil Removal Area 4 for transport to Southern Illinois Regional Landfill. Placed geotextile and general fill/vegetative cover in Surface Cover Area 1.
Thursday – January 14, 2021
Continued excavation of impacted material in Soil Removal Area 4. Impacted material from Soil Removal Area 4 was loaded out for transport to Southern Illinois Regional Landfill. Drainage culvert in Soil Removal Area 4 was excavated and removed, and the area was graded to maintain drainage flow. Placed geotextile and general fill/vegetative cover in Surface Cover Area 1. Began preparation for hydroseeding in Soil Removal Area 1. Placed geotextile in approved portions of Soil Removal Area 3 excavation area.
Friday – January 15, 2021
Completed excavation and loadout of impacted material from Soil Removal Area 4 for transport to Southern Illinois Regional Landfill. Placed geotextile and general fill/vegetative cover in Surface Cover Area 1. Continued preparation for hydroseeding in Soil Removal Area 1.
Saturday – January 16, 2021
Placed geotextile and general fill/vegetative cover in Surface Cover Area 1. Placed geotextile in Surface Cover Area 2. Continued preparation for hydroseeding in Soil Removal Area 1.
Sunday – January 17, 2021
Not On-Site

4.0 ENTACT Subcontractors

Date	Subcontractor/Vendor/ Third Party	Work Activity
1/12/2021	Shawnee Professional Services	Surveyed finished Soil Removal Area 3 excavation and Surface Cover Area 2
1/12/2021	Fabick CAT	Performed maintenance of ENTACT equipment
1/14/2021	Shawnee Professional Services	Surveyed finished work areas

5.0 ENTACT Deliveries

Material Import – Current Week		
Date	Description	Quantity
1/11/2021	General Fill/Vegetative Cover	881 tons
1/12/2021	General Fill/Vegetative Cover	1019 tons
1/12/2021	CA-2	237.99 tons
1/13/2021	General Fill/Vegetative Cover	900 tons
1/14/2021	General Fill/Vegetative Cover	1007 tons
1/15/2021	General Fill/Vegetative Cover	1699 tons
1/16/2021	General Fill/Vegetative Cover	1459 tons

Material Import – To Date	
Description	Quantity
General Fill	23887.60 tons
General Fill/Vegetative Cover	29592.14 tons
CA-2	2612.70 tons
Demarcation Fabric	747000 SF
Filter Sock	10230 LF
RipRap-1	231.74 tons

6.0 Material Export

Material Export– Current Week		
Date	Description	Quantity
1/12/2021	Impacted Soils	865.01 tons
1/13/2021	Impacted Soils	1063.79 tons
1/14/2021	Impacted Soils	1382.18 tons
1/15/2021	Impacted Soils	250.28 tons

Material Export – To Date	
Description	Quantity
Impacted Soils	33893.13 tons

7.0 Construction Quality Control

See Attached Reports and Logs:

- Progress Photos
- Progress Map
- Current Project Schedule

8.0 Request for Information (RFIs)

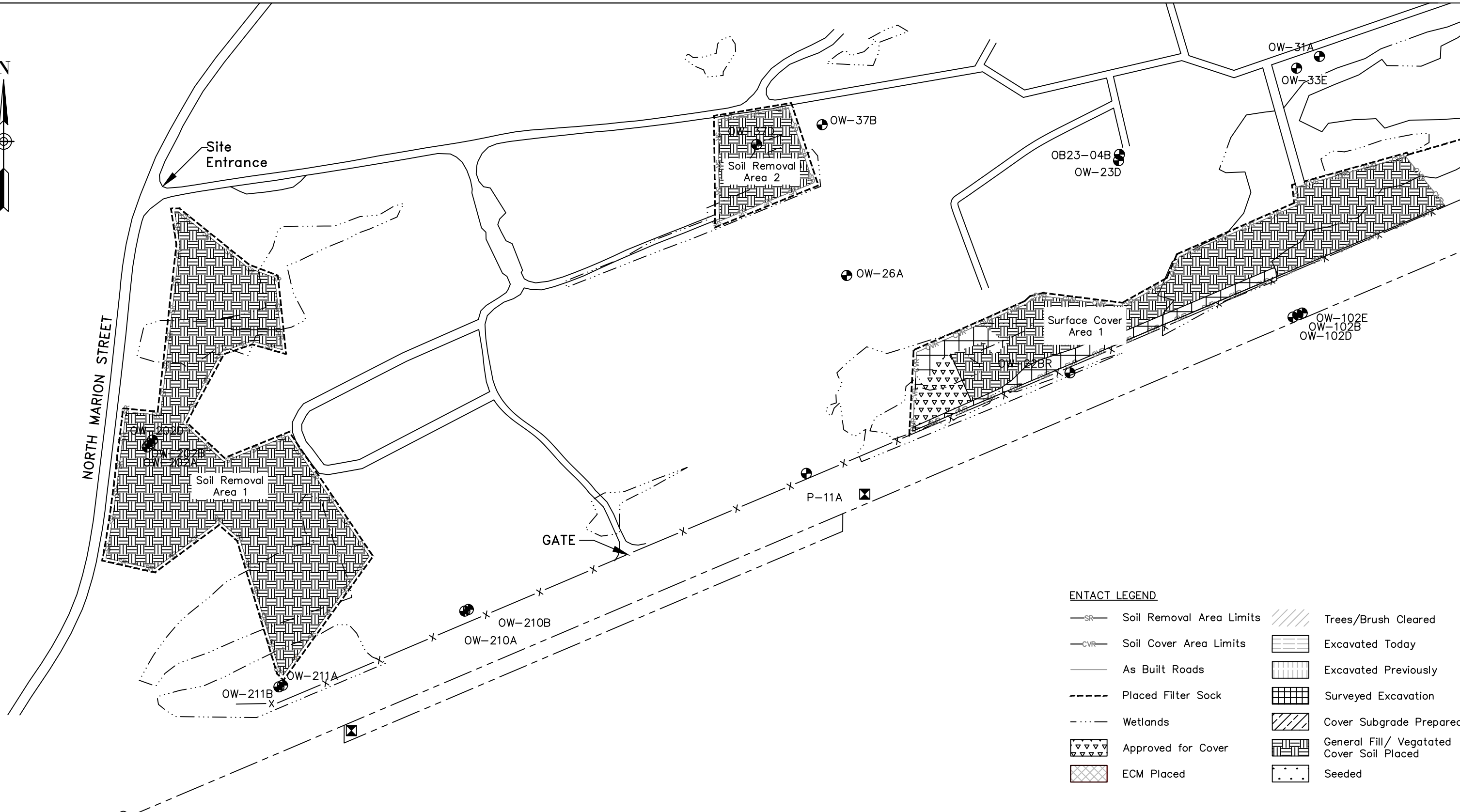
- RFI 001 – Stabilized Construction Entrance Aggregate (Approved)
- None pending

9.0 Change in Conditions

- Borrow material from Shawnee Sand and Gravel corresponding to samples GF-03 and GF-04 was approved for use as both General Fill and Vegetative Cover Soil (per Submittal 019A). Previously, borrow material from Shawnee Sand and Gravel corresponding to sample GF-02 was approved for use as General Fill only (per Submittal 011)

Picture Number	1	
Date	1/13	
Direction	W	
Description: Import of general fill/ vegetative cover soil in Surface Cover Area 1.		
Picture Number	2	
Date	1/14	
Direction	W	
Description: Placed general fill/ vegetative cover soil in Surface Cover Area 1.		
Picture Number	3	
Date	1/14	
Direction	SE	
Description: Geotextile placed over southern portion of Soil Removal Area 3 excavation.		

Picture Number	4	
Date	1/15	
Direction	SW	
Description:	Finished Soil Removal Area 4 excavation.	



ENTACT LEGEND

Soil Removal Area Limits	Trees/Brush Cleared
Soil Cover Area Limits	Excavated Today
As Built Roads	Excavated Previously
Placed Filter Sock	Surveyed Excavation
Wetlands	Cover Subgrade Prepared
Approved for Cover	General Fill/ Vegetated Cover Soil Placed
ECM Placed	Seeded

REV	DATE	BY	CHK'D	APR'VD	DESCRIPTION

PREPARED FOR:
BEAZER EAST
PITTSBURGH, PA

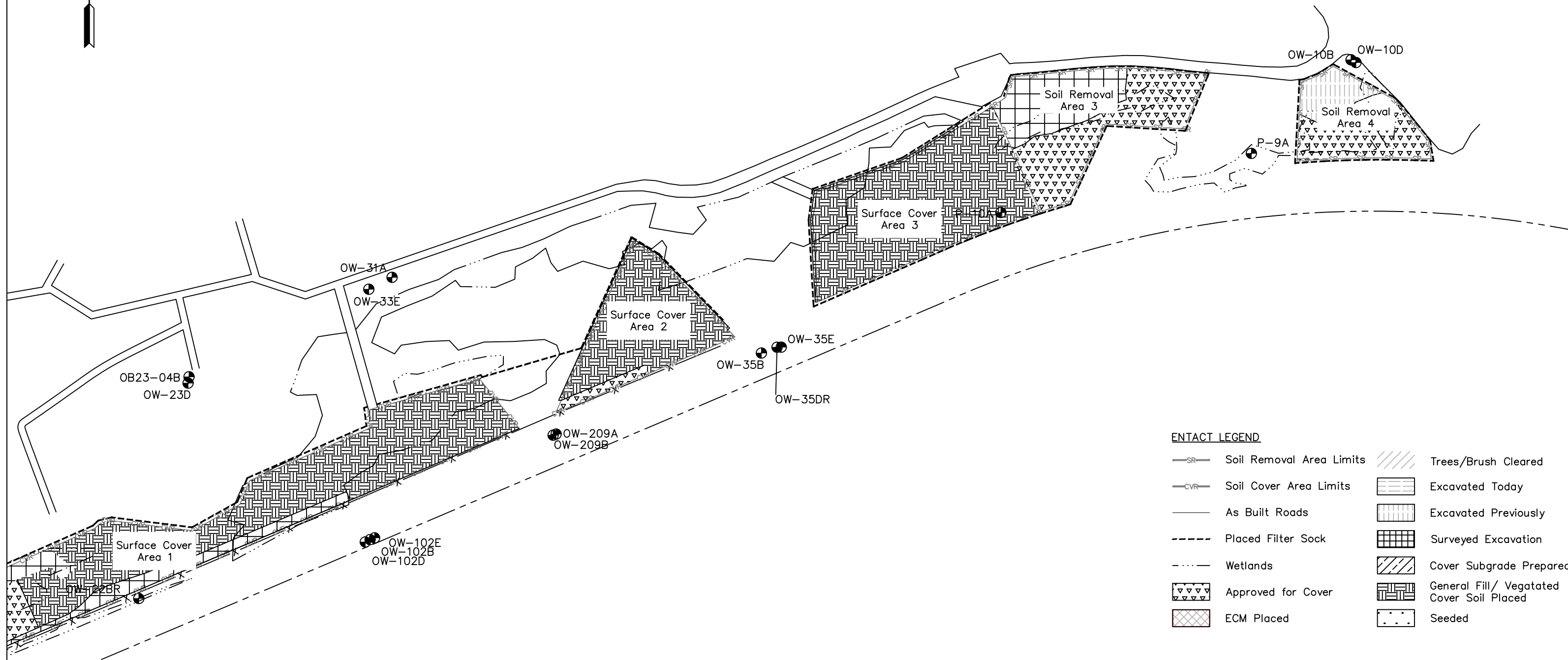
SCALE: 1"=200'

ENTACT

DRAWING NAME: **Daily Progress Figure – Site West**

PROJECT NAME & LOCATION: **SOIL REMOVAL AND SURFACE COVER REMEDY
 FORMER KOPPERS WOOD-TREATING SITE
 CARBONDALE, IL**

DRAWN BY	K. KLIPPSTEIN	APPROVED BY	T. MORAN	REV	0	SHEET NO.
DATE	1/16/2021	DATE		PROJECT NO.	E8658	1 OF 2

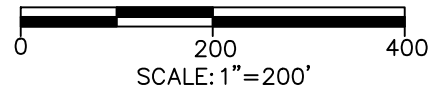


ENTACT LEGEND

- SR— Soil Removal Area Limits
- CVR— Soil Cover Area Limits
- As Built Roads
- - - - Placed Filter Sock
- · - · - Wetlands
- ▽▽▽ Approved for Cover
- ◊◊◊ ECM Placed
- /// Trees/Brush Cleared
- ▨ Excavated Today
- ▩ Excavated Previously
- ▧ Surveyed Excavation
- ▨ Cover Subgrade Prepared
- ▩ General Fill/ Vegetated Cover Soil Placed
- · · Seeded

REV	DATE	BY	CHK'D	APR'VD	DESCRIPTION

PREPARED FOR:
BEAZER EAST
PITTSBURGH, PA

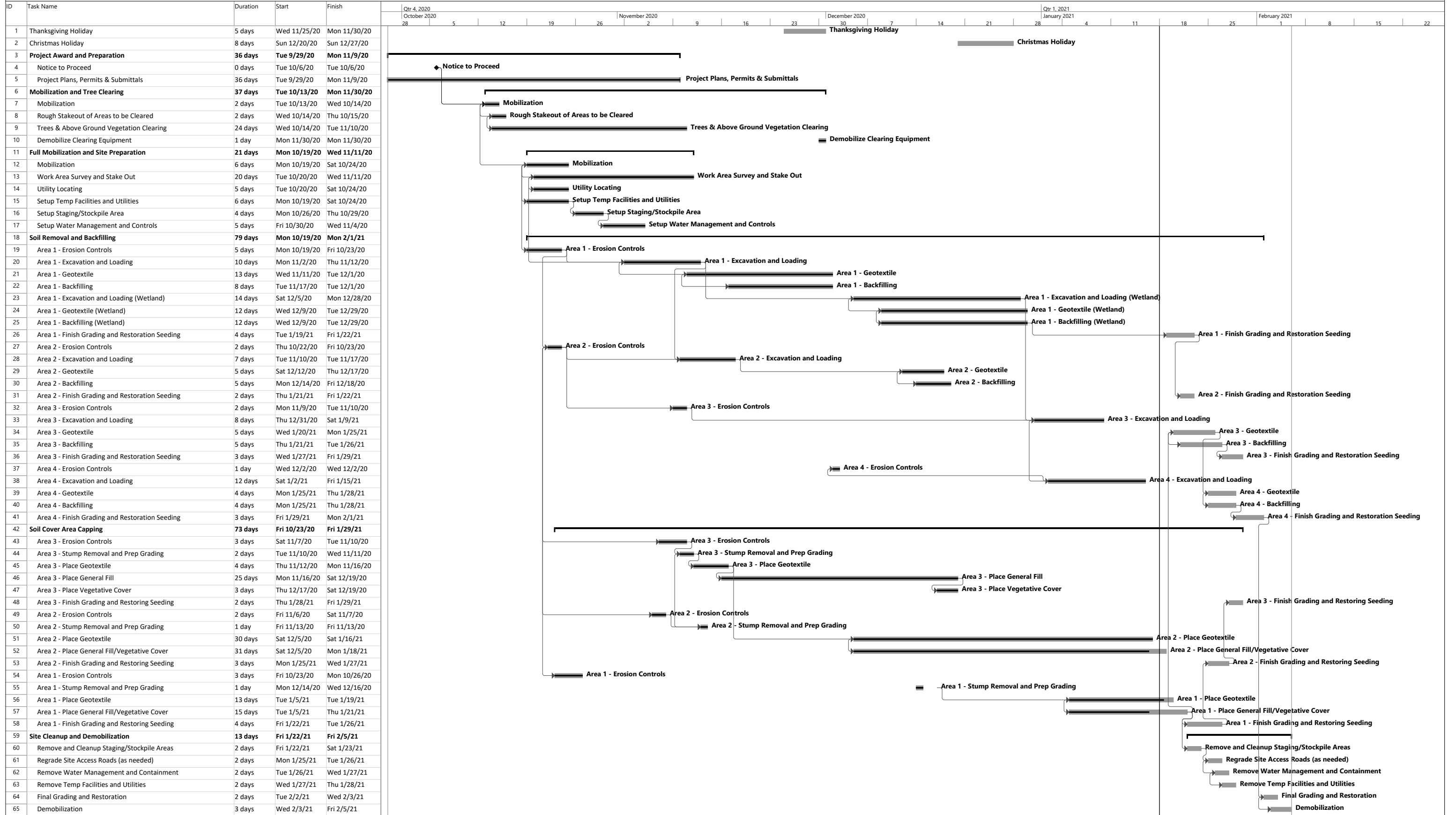


DRAWING NAME
Daily Progress Figure – Site East

PROJECT NAME & LOCATION
SOIL REMOVAL AND SURFACE COVER REMEDY
FORMER KOPPERS WOOD-TREATING SITE
CARBONDALE, IL

DRAWN BY	K. KLIPPSTEIN	APPROVED BY	T. MORAN	REV	0	SHEET NO.
DATE	1/16/2021	DATE		PROJECT NO.	E8658	2 OF 2

Beazer East, Inc.
Soil Removal and Surface Cover Remedial Design
Former Koppers Wood-Treating Site
Carbondale, Illinois



ENTACT PROJECT SCHEDULE Summary Task Milestone Progress
 Date: Mon 1/18/21