

**Beazer East, Inc.**

**Former Koppers Wood-Treating Site – Carbondale, Illinois**

**Soil Removal and Surface Cover Remediation Project**

**Weekly Report #14: 1/18/21 – 1/24/21**



**Soil Removal and Surface Cover  
Former Koppers Wood-Treating Site  
Carbondale, IL**

**WEEKLY PROGRESS REPORT**

**Reporting Period:** Monday, January 18<sup>th</sup>, 2021 to Sunday, January 24<sup>th</sup>, 2021

**Progress Meeting Date:** Tuesday, January 19<sup>th</sup>, 2021

**1.0 Weather Conditions**

Date	Conditions	Wind	Precipitation (in)
Monday 1/18/21	Partly Cloudy, 27-53 °F	5.4/NW	0
Tuesday 1/19/21	Clear, 28-50 °F	3.8/NNW	0
Wednesday 1/20/21	Clear, 23-48 °F	8.9/W	0
Thursday 1/21/21	Clear, 33-56 °F	8.1/WSW	0
Friday 1/22/21	Clear, 24-41 °F	9.6/NNW	0
Saturday 1/23/21	Cloudy, 18-42 °F	7.6/E	0
Sunday 1/24/21	Not On-Site		0.02
Week Total			0.02
Site Cumulative			10.65

**2.0 Health & Safety**

Manhours Completed this Period: 983.5

Manhours Completed to Date: 8242

Notes

Day	Tailgate Topic(s)
<b>Monday</b>	Working smart and taking time to complete all tasks in an efficient and safe manner
<b>Tuesday</b>	Being observant of increased truck traffic onsite, avoid complacency
<b>Wednesday</b>	Traffic safety and completion of job safety analysis for each task
<b>Thursday</b>	Traffic safety
<b>Friday</b>	Traffic safety and slips, trips, and fall hazards around site
<b>Saturday</b>	Traffic safety and biological/wildlife hazards
<b>Sunday</b>	-

**3.0 ENTACT Work Activities Summary**

<b>Monday – January 18, 2021</b>
Placed general fill/vegetative cover in Surface Cover Area 1 and graded to final grade. Placed geotextile and general fill/vegetative cover in Soil Removal Area 3.
<b>Tuesday – January 19, 2021</b>
Completed placement of general fill/vegetative cover in Surface Cover Areas 1 and 2 and graded to final grade. Continued placement of geotextile and general fill/vegetative cover in Soil Removal Area 3. Placed geotextile in Soil Removal Area 4.
<b>Wednesday – January 20, 2021</b>
Continued placement of geotextile and general fill/vegetative cover in Soil Removal Area 3. The ditch in the northeastern corner of Surface Cover Area 3 was graded to allow for drainage, geotextile and general fill/vegetative cover was placed, and was graded to final grade.
<b>Thursday – January 21, 2021</b>
Completed placement of geotextile and general fill/vegetative cover in Soil Removal Area 3. Placed general fill/vegetative cover in Soil Removal Area 4. Hydroseeded and placed lime in Soil Removal Areas 1 and 2.
<b>Friday – January 22, 2021</b>
Continued placement of geotextile and general fill/vegetative cover in Soil Removal Area 4. Continued hydroseeding in Soil Removal Area 1.
<b>Saturday – January 23, 2021</b>
Completed placement of geotextile and general fill/vegetative cover in Soil Removal Area 4. Continued hydroseeding in Soil Removal Area 1. Erosion control matting was placed in ditches in Surface Cover Area 1.
<b>Sunday – January 24, 2021</b>
Not On-Site

**4.0 ENTACT Subcontractors**

<b>Date</b>	<b>Subcontractor/Vendor/ Third Party</b>	<b>Work Activity</b>
1/18/2021	Fabick CAT	Performed repair and regular maintenance of ENTACT equipment
1/19/2021	Shawnee Professional Services	Performed surveys of Soil Removal Area 4 excavation and Surface Cover Area 1 final grade
1/21/2021	Shawnee Professional Services	Performed survey of Surface Cover Area 1 final grade

**5.0 ENTACT Deliveries**

Equipment - Demobilization		
Date	Description	Quantity
1/19/2021	CAT 336 excavator	1

Material Import – Current Week		
Date	Description	Quantity
1/18/2021	General Fill/Vegetative Cover	2149 tons
1/19/2021	General Fill/Vegetative Cover	1877 tons
1/20/2021	General Fill/Vegetative Cover	1905 tons
1/21/2021	General Fill/Vegetative Cover	1648 tons
1/22/2021	General Fill/Vegetative Cover	1875 tons
1/23/2021	General Fill/Vegetative Cover	1705 tons

Material Import – To Date	
Description	Quantity
General Fill	23887.60 tons
General Fill/Vegetative Cover	40807.52 tons
CA-2	2612.70 tons
Demarcation Fabric	747000 SF
Filter Sock	10230 LF
RipRap-1	231.74 tons

**6.0 Material Export**

**No material export this week.**

Material Export – To Date	
Description	Quantity
Impacted Soils	33924.14 tons*

\* A 31.01 ton load of impacted soil sent to the landfill on November 6, 2020 was inadvertently not account for in prior reports.

**7.0 Construction Quality Control**

See Attached Reports and Logs:

- Progress Photos
- Progress Map
- Current Project Schedule

**8.0 Request for Information (RFIs)**

- RFI 001 – Stabilized Construction Entrance Aggregate (Approved)
- None pending

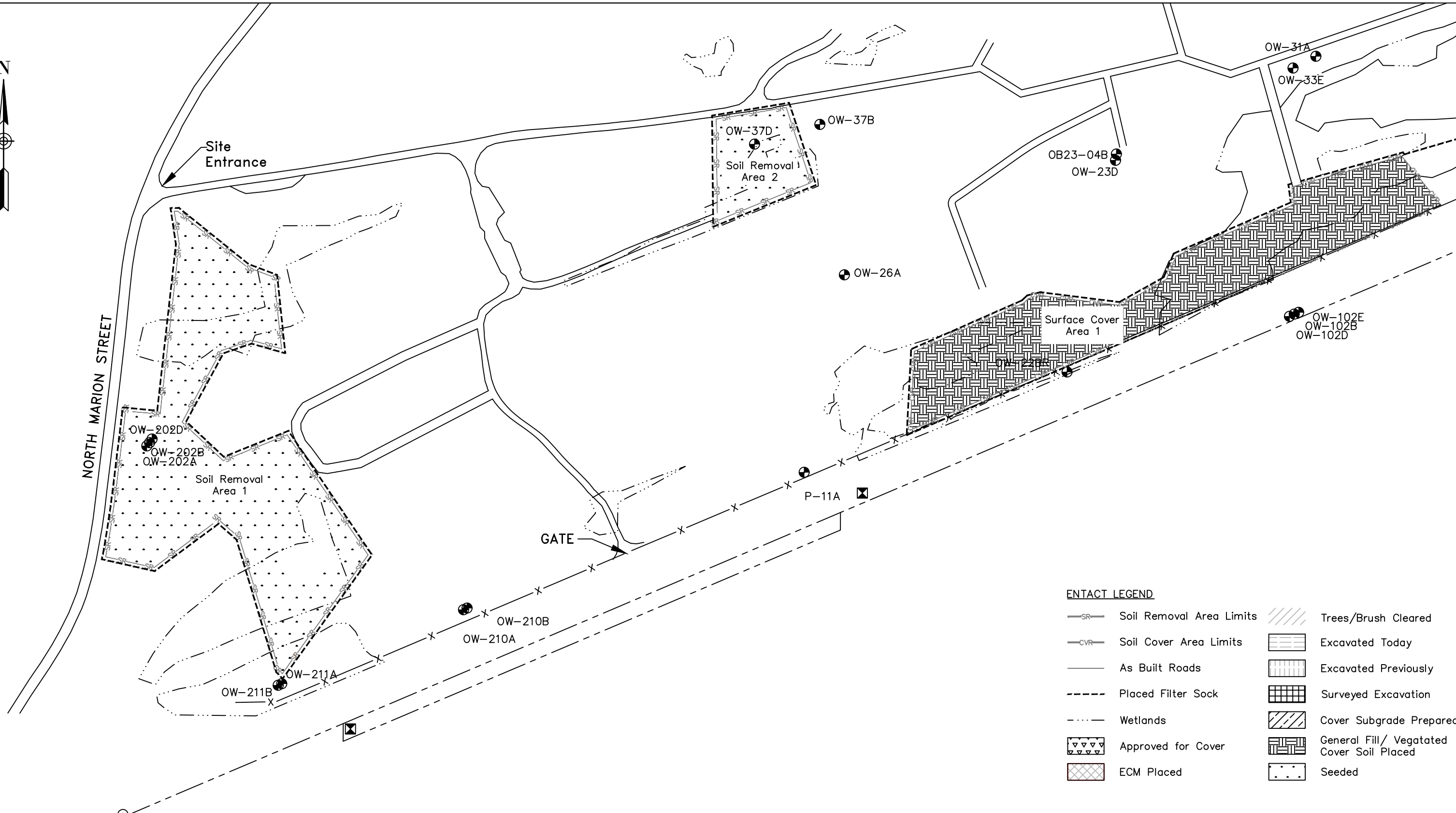
**9.0 Change in Conditions**

- Borrow material from Shawnee Sand and Gravel corresponding to samples GF-03 and GF-04 was approved for use as both General Fill and Vegetative Cover Soil (per Submittal 019A). Previously, borrow material from Shawnee Sand and Gravel corresponding to sample GF-02 was approved for use as General Fill only (per Submittal 011)

<b>Picture Number</b>	<b>1</b>	
<b>Date</b>	1/19	
<b>Direction</b>	W	
<b>Description:</b> Placement of general fill/ vegetative cover soil in Soil Removal Area 3.		
<b>Picture Number</b>	<b>2</b>	
<b>Date</b>	1/21	
<b>Direction</b>	S	
<b>Description:</b> Hydroseeding Soil Removal Area 2.		

<b>Picture Number</b>	3	
<b>Date</b>	1/21	
<b>Direction</b>	W	
<b>Description:</b> Completed placement of general fill/ vegetative cover soil in Soil Removal Area 3.		
<b>Picture Number</b>	4	
<b>Date</b>	1/23	
<b>Direction</b>	SE	
<b>Description:</b> Placement of general fill/ vegetative cover soil in Soil Removal Area 4.		





**ENTACT LEGEND**

Soil Removal Area Limits	Trees/Brush Cleared
Soil Cover Area Limits	Excavated Today
As Built Roads	Excavated Previously
Placed Filter Sock	Surveyed Excavation
Wetlands	Cover Subgrade Prepared
Approved for Cover	General Fill/ Vegetated Cover Soil Placed
ECM Placed	Seeded

REV	DATE	BY	CHK'D	APR'VD	DESCRIPTION

PREPARED FOR:  
 BEAZER EAST  
 PITTSBURGH, PA

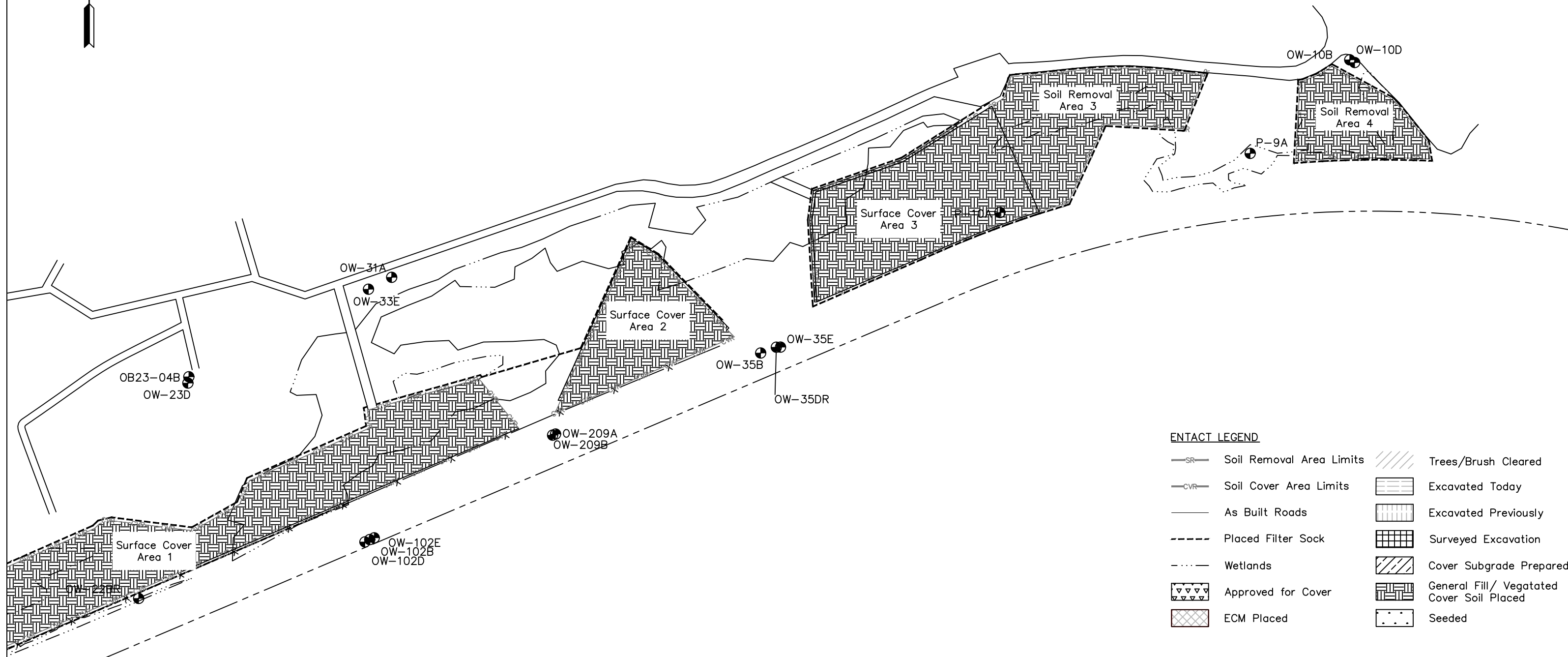
SCALE: 1"=200'

**ENTACT**

DRAWING NAME: Daily Progress Figure – Site West

PROJECT NAME & LOCATION: SOIL REMOVAL AND SURFACE COVER REMEDY  
 FORMER KOPPERS WOOD-TREATING SITE  
 CARBONDALE, IL

DRAWN BY	K. KLIPPSTEIN	APPROVED BY	T. MORAN	REV	0	SHEET NO.
DATE	1/23/2021	DATE		PROJECT NO.	E8658	1 OF 2

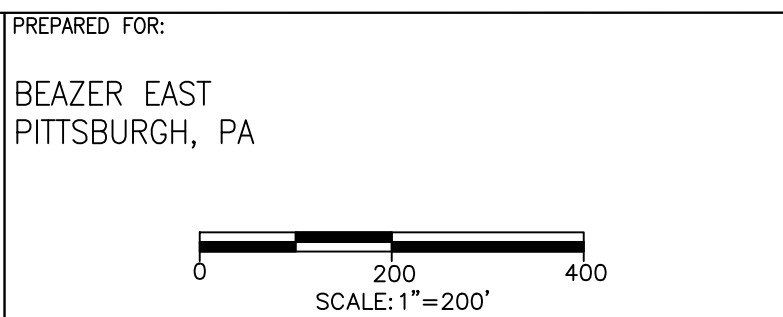


**ENTACT LEGEND**

Soil Removal Area Limits	Trees/Brush Cleared
Soil Cover Area Limits	Excavated Today
As Built Roads	Excavated Previously
Placed Filter Sock	Surveyed Excavation
Wetlands	Cover Subgrade Prepared
Approved for Cover	General Fill/ Vegetated Cover Soil Placed
ECM Placed	Seeded

REV	DATE	BY	CHK'D	APR'VD	DESCRIPTION

PREPARED FOR:  
 BEAZER EAST  
 PITTSBURGH, PA



**ENTACT**

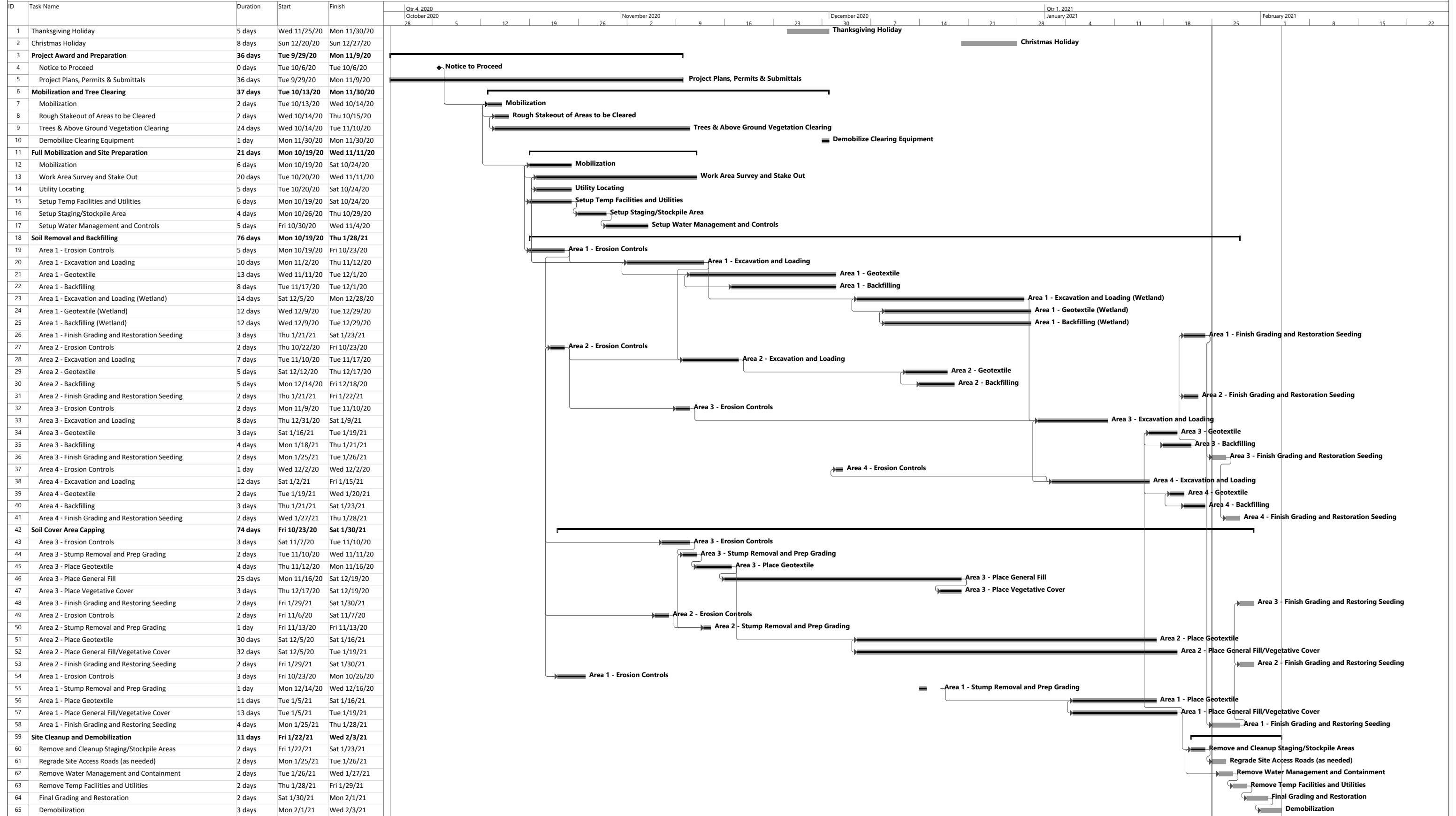
DRAWING NAME: Daily Progress Figure - Site East

PROJECT NAME & LOCATION: SOIL REMOVAL AND SURFACE COVER REMEDY  
 FORMER KOPPERS WOOD-TREATING SITE  
 CARBONDALE, IL

DRAWN BY	K. KLIPPSTEIN	APPROVED BY	T. MORAN	REV	0	SHEET NO.
DATE	1/23/2021	DATE		PROJECT NO.	E8658	2 OF 2



**Beazer East, Inc.**  
**Soil Removal and Surface Cover Remedial Design**  
**Former Koppers Wood-Treating Site**  
**Carbondale, Illinois**



ENTACT PROJECT SCHEDULE Summary Task Milestone Progress  
 Date: Mon 1/25/21