

State and Local Panel

Amy Robinson

MDEQ

4/5/11

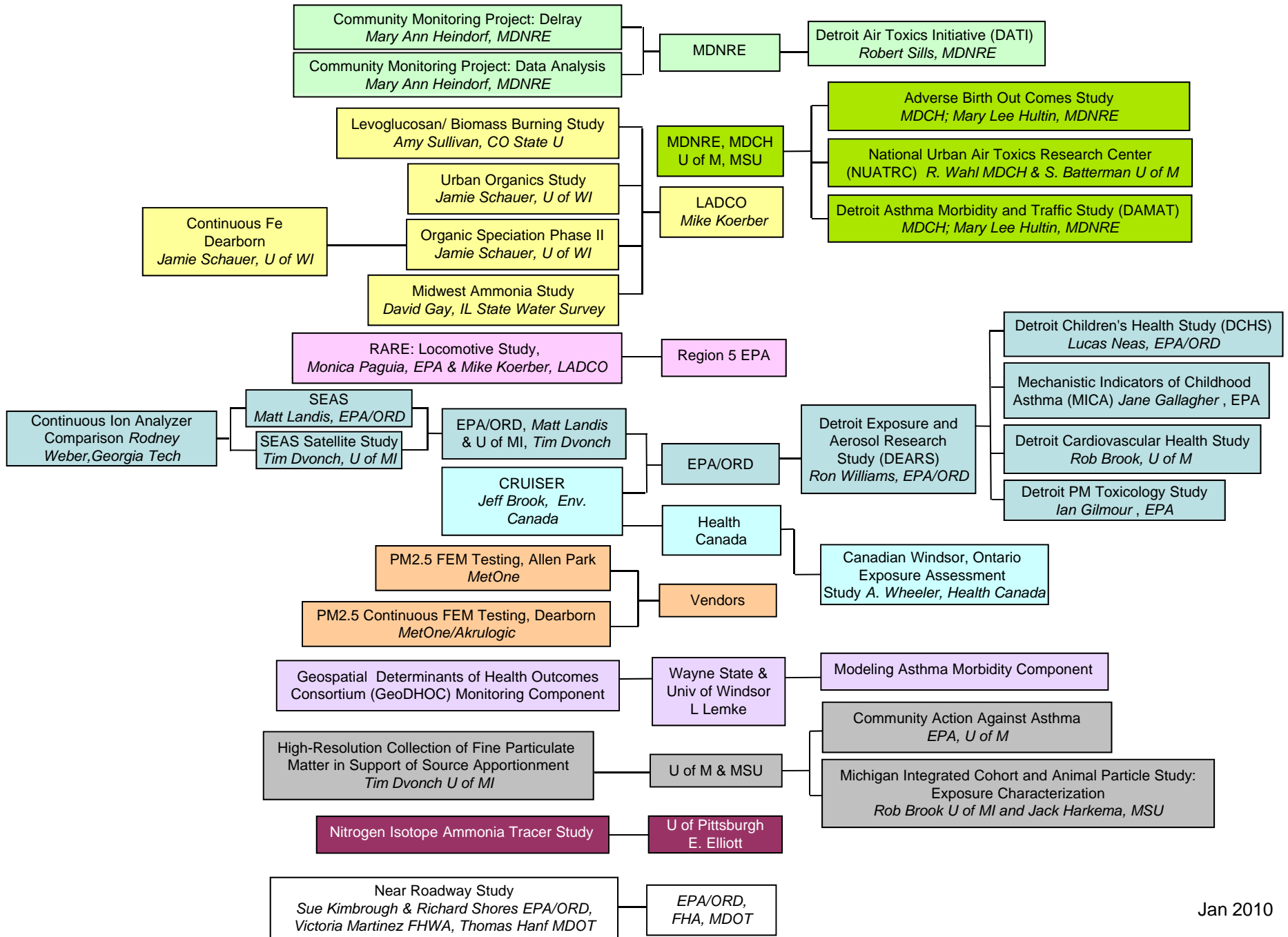
National Air Toxics Monitoring and Data Analysis Workshop
Dallas, Texas

What are MDEQ issues

- Leverage, Leverage, Leverage
- Budget Issues
- Instrument Comparability

Air Monitoring/Modeling Studies In SE Michigan

Health Studies In SE Michigan



Budget Issues

- Retirements
 - Can't always do more with less
- Analysis money
 - Can we even afford to sample?
- Contracts for outside labs
 - Inter laboratory Comparability

Instrument Comparability

- FEM vs FRM
- Bucket Bridgades
 - Our lab verse their lab
- Wood Burning Issues
 - Hand held PM monitors

MDNRE-Supported Resident's Sample Collection*

Rouge St



3 to 6 min Grab Samples

2 Tedlar Bags

1 SUMMA Can

Method TO-15

Columbia Analytical Lab
Simi Valley, CA

DNRE Lab
Lansing, MI

MEK,
ug/m³

210

2.8

2.5

Wind Dir: SW

Wind Speed: 5-6 mph

11/21/2009

MDNRE Ambient Monitoring

Detroit – SW HS



Dearborn NATTS Site



24-Hr integrated sample (AVOC)

1 SUMMA Can

1 SUMMA Can

Eastern Research Group
(NATTS contract lab)

0.99

0.83

*Photo not of actual sampling location

Hand Held Data Ram vs TEOM

