



# Welcome to the EPA Webinar

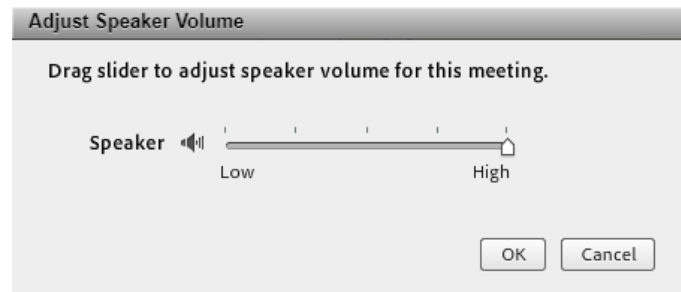
Please mute your adobe connect speaker




Press the down arrow.



Make sure the speaker is muted.





EPA Environmental Justice Webinar  
Series for Tribes and Indigenous Peoples

EPA Policy on Environmental Justice for  
Working with Federally Recognized Tribes  
and Indigenous Peoples  
&  
EPA's EJ Financial Assistance Programs



November 10, 2020



# Presenters

- Danny Gogal, Tribal and Indigenous Peoples Program Manager, Office of Environmental Justice, U.S. EPA
- Dani Triebwasser, MS Candidate, Environmental Justice & Conservation Ecology, University of Michigan
- Beata Tsosie-Pena, Coordinator, Environmental Health and Justice Program, Tewa Women United
- Lynn Zender, Executive Director, Zender Environmental Health & Research
- Simone Seballo, Deputy Director, Zender Environmental Health & Research
- Vanessa Tahbone, Environmental Coordinator, Kawerak Inc.



# **EPA Policy on Environmental Justice for Working with Federally Recognized Tribes and Indigenous Peoples**

## **Overview**

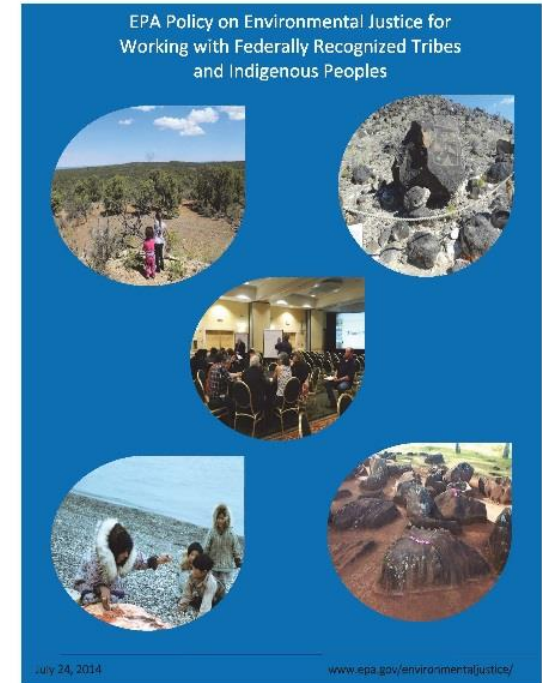
**Danny Gogal, Office of Environmental  
Justice, U.S. EPA**

# Policy



Issued: 2014

Purpose: Clarify and integrate EJ principles in a consistent manner in the Agency's work with federally recognized tribes, indigenous peoples and others living in Indian country.



Scope: Federally recognized tribes, state recognized tribes, tribal members, indigenous community organizations, Native Hawaiians, individual Native Americans, and others living in Indian country.

# Policy Focuses on Four Areas



1. EPA's integration of EJ when **directly implementing** federal environmental programs in Indian country, and throughout the United States.
2. EPA's work with **federally recognized tribes/tribal governments** on EJ.
3. EPA's work with **indigenous peoples** (state recognized tribes, tribal members, indigenous community-based organizations, etc.) on EJ.
4. EPA's **coordination and collaboration with federal agencies and others** on EJ issues of tribes, indigenous peoples, and others living in Indian country.



# Policy Content

## **Seventeen (17) Principles - Spread Across the Four Focus Areas**

- Direct Implementation (7)
- Engaging Federally Recognized Tribes (3)
- Engaging Indigenous Peoples (4)
- Intergovernmental Coordination (3)

## **Two Policy components to highlight:**

- Importance of the articles in the UN Declaration on the Rights of Indigenous Peoples that pertain to the Agency's mission.
- Integration of traditional ecological knowledge into Agency's science, policy and decision-making processes.



## **EJ in Direct Implementation – Examples**

- 2 - Being responsive to the EJ concerns of federally recognized tribes, indigenous peoples throughout the United States, and others living in Indian country.
- 4 - Using legal authorities to advance environmental justice throughout the U.S. and in Indian country (EJ in permitting, EJ in EPA Actions/regulatory development, EJ in NEPA, EJSCREEN, etc.)



# Engaging Federally Recognized Tribes – Examples

- 9 - Supporting the integration of environmental justice principles and programs into tribal government programs, policies, and activities (i.e. public participation capacity building assistance through the Indian General Assistance Program, EJ Small Grants/Cooperative Agreements, etc.)



## Engaging Indigenous Peoples - Examples

- 11 & 12 - Developing and maintaining relationships, having open communication, and providing meaningful involvement opportunities with indigenous peoples and communities
- 13 - Identifying key points of contact in affected communities to facilitate meaningful involvement and fair treatment on EJ issues, and to better understand the communities





## Intergovernmental Coordination on EJ- Examples

- 15 - Facilitating discussions among government entities on environmental justice issues affecting tribes and indigenous peoples.
- 16 - Encouraging federal agencies and state and local governments to incorporate environmental justice principles into their programs, policies, and activities that may affect tribes and indigenous peoples and others living in Indian country.





# Policy Implementation - Examples

- Consideration of Traditional Knowledge (TK/TEK) – Principle 6
  - 2018, EPA Region 10’s TK principles for working with tribes on TK.
  - 2017, Office of Land and Emergency Management Memorandum – [Considering Traditional Ecological Knowledge \(TEK\) during the Cleanup Process](#).
    - Application of TEK in the Cleanup of the Grasse River Superfund Site in New York
  - See EPA’s [Annual EJ Progress Report 2019](#), pages 23-25
- EPA EJ Webinar Series for Tribes and Indigenous Peoples – Principles 3, 5, 9, 10 and 12



## **How does this Policy Affect EPA's Working Relationships Within the Agency**

- Greater coordination and collaboration among the tribal program and EJ program.
- Contact lists of tribal government officials and indigenous peoples within each EPA region who are interested in EJ.
- EJ Tribal and Indigenous Peoples Advisors (EJ TIPAs) responsible for facilitating policy implementation
  - For FY 2021, coordinating an EJ Webinar Series for Tribes and Indigenous Peoples



# Policy

The Policy can be found at:

<http://www.epa.gov/compliance/environmentaljustice/resources/policy/indigenous/ej-indigenous-policy.pdf>

Further information on the Development & Implementation of the Policy can be found at:

<http://www.epa.gov/compliance/environmentaljustice/indigenous/index.html>



# **EPA's EJ Financial Assistance Programs**

## **Overview**

**Dani Triebwasser, EPA 2020 Summer Intern  
MS Candidate - University of Michigan**



# Policy Implementation – Financial Assistance Programs

- EJ Small Grants
  - EJ Collaborative Problem-Solving Cooperative Agreements (CPS)
  - State EJ Cooperative Agreements (SEJCA)
- \* Overarching Goal: Support Tribal and Indigenous Peoples' Environmental Justice Programs and Capacity





# Environmental Justice Small Grants (EJSG)

- Support Projects Designed to:
  - engage, educate, and empower communities to **increase understanding** of local environmental and public health issues, and
  - **develop strategies** for addressing those issues, **building consensus** in the community, and setting **community priorities**.
- \$30,000 per grant for 1-year projects
- Eligibility: Community-based organizations and/or Federally-recognized tribal governments
- Request for Applications (RFA) likely by January 2021

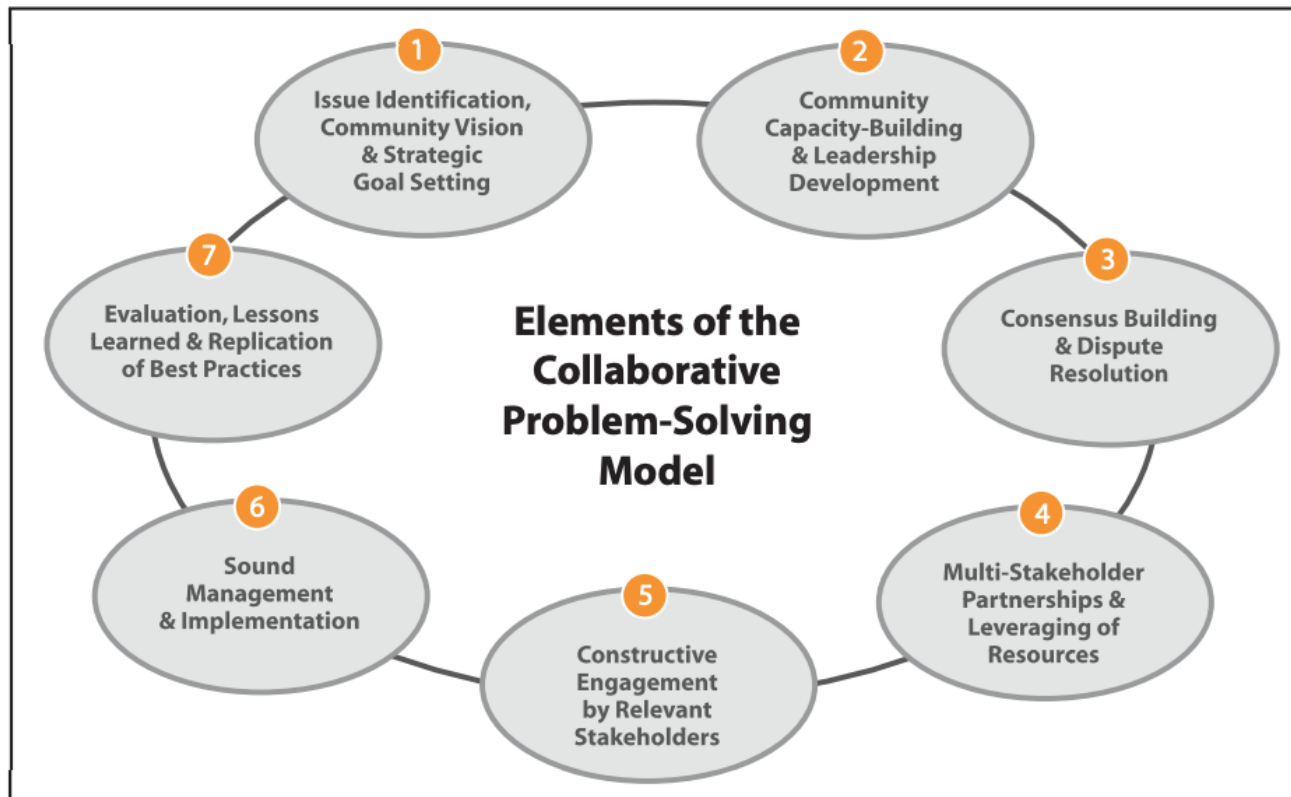


# Environmental Justice Collaborative Problem-Solving Cooperative Agreements

- Supports Projects Designed to:
  - address community environmental and public health concerns through **collaborative partnerships** with **3 or more groups**, and
  - create community-driven solutions using the EPA's **Environmental Justice Collaborative Problem-Solving Model**
- \$120,000 per award for 2-year projects
- Eligibility: Community-based organizations and/or Federally-recognized tribal governments
- Request for Applications (RFA) likely by January 2021



# Environmental Justice Collaborative Problem-Solving Model





# State Environmental Justice Cooperative Agreements (SEJCA)

- Supports Projects Designed to:
  - build broad and robust, [results-oriented partnerships](#), within communities disproportionately impacted by environmental and public health threats; and
  - pilot activities that create [replicable models and frameworks](#) usable by other communities.
- \$200,000 per grant for 2-year projects
- Eligibility: State, Tribal, and Local Governments
  - Both State and Federally-Recognized Tribes are eligible
  - \* [FY 2020 Tribal Recipient](#): Coyote Valley Band of Pomo Indians (CA)
- Request for Applications likely in November 2021





# Additional Information on the Financial Assistance Programs

## Environmental Justice Small Grants

<https://www.epa.gov/environmentaljustice/environmental-justice-small-grants-program>

## Environmental Justice Collaborative Problem-Solving Cooperative Agreements

<https://www.epa.gov/environmental-justice/environmental-justice-collaborative-problem-solving-cooperative-agreement-0>

## State Environmental Justice Cooperative Agreements

<https://www.epa.gov/environmentaljustice/state-environmental-justice-cooperative-agreement-program>

## EPA Collaborative Problem-Solving Model

<https://www.epa.gov/sites/production/files/2016-06/documents/cps-manual-12-27-06.pdf> 22



# Environmental Justice Small Grants Recipient Experience

Tewa Women United:  
Española Healing Foods  
Oasis

- 2015 Environmental Justice Small Grant
- Location: Española, New Mexico, EPA Region 6





# CPS Cooperative Agreement Recipient Experience

Zender Environmental Health  
Research Group: [Backhaul Alaska,  
Mitigating Environmental and Public  
Health Hazards in Rural Alaska](#)



- 2018 Collaborative Problem-Solving Cooperative Agreement
- Project Partners: Kawerak, ANTHC, ADEC, Participating rural community environmental coordinators
- Location: Alaska, Region 10



# Tewa Women United

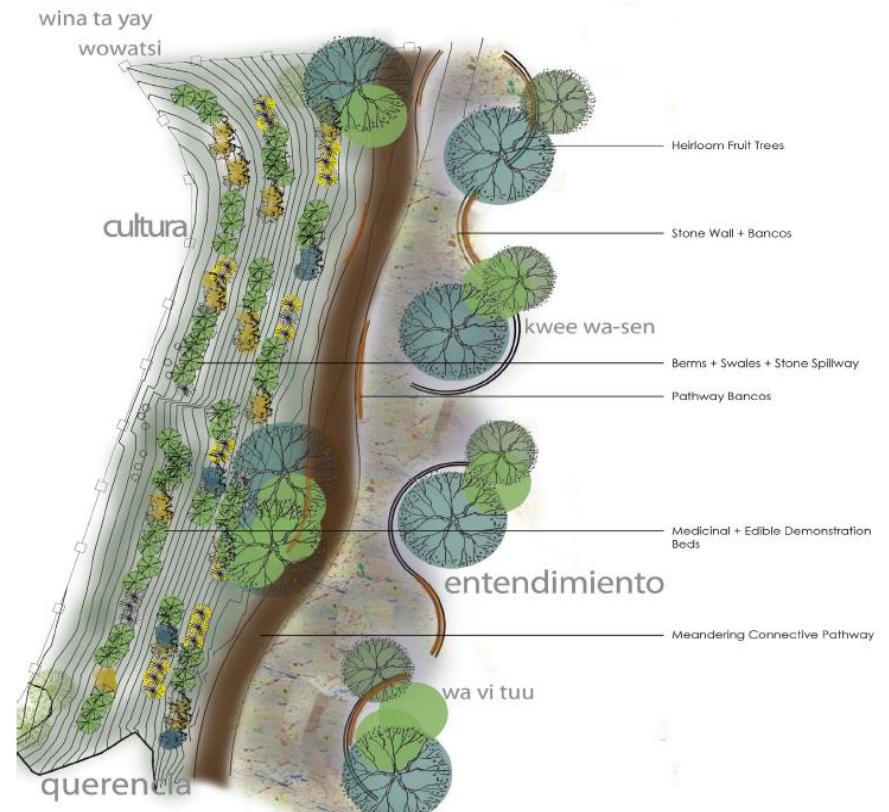
2015 EJ Small Grant Recipient

## Beata Tsosie-Pena



### Española Healing Foods Oasis

Indigenous Dryland Urban Farming As  
Eco-Cultural Catalyst for Regeneration





## ROOTED CONNECTION TO PLACE

Water  
Seed  
Soil  
Traditional wisdom



# Rooted Connection to Place

# Phase I

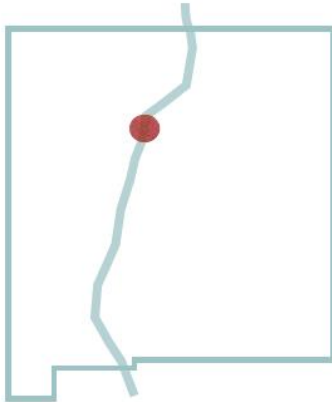
PHASE I  
Planning + Design



DESIGN COLLABORATORS  
Tewa Women United  
City of Española  
Anchor Engineering  
radicle



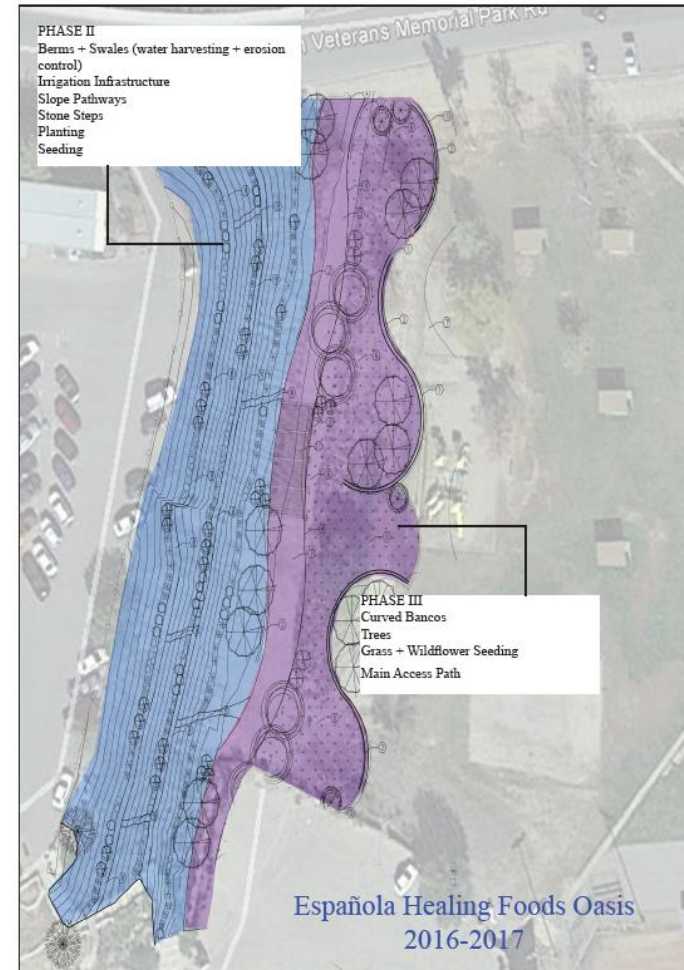
# 2 Acres, in Espanola, New Mexico



ESPAÑOLA, NEW MEXICO

2 ACRES

PHASED, FOUR-YEAR IMPLEMENTATION





PHASE II  
Land form grading  
Control erosion  
Harvest water  
Build soil

# Phase II



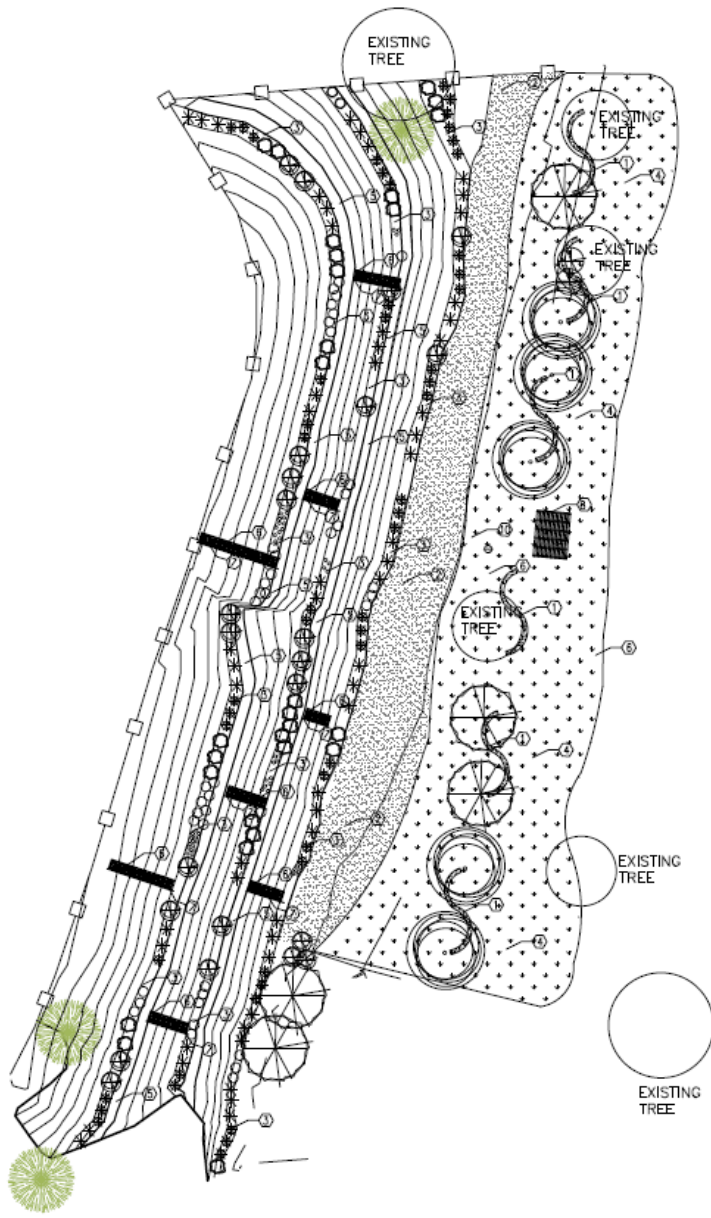
PHASE II  
Berms + Swales on Contour  
Compost + mulch



PHASE II  
Water: slow + soak



Phase III



PHASE III  
Develop plant palette  
Plant trees + shrubs



# Design Collaborators



DESIGN COLLABORATORS  
Tewa Women United  
Four Bridges Permaculture  
Mothers  
Doulas  
Herbalists  
radicle

# Plant Trees, Shrubs, Grasses & Perennials



PHASE III  
Plant trees, shrubs, grasses + perennials





# Phase III - Completed



PHASE III  
Trees + Shrubs + Grasses  
Bark mulch in beds  
Stone mulch on slopes + berms



PHASE III  
Avanyu - stone water serpent  
Pergola  
Stone Steps

## Grant Support

Environmental Protection Agency (EPA)  
Environmental Justice Small Grants(\$30,000 2016-17)  
Northern Rio Grande National Heritage Area(\$4,000 2017-18)  
Walmart Community Grant (community grant 2016 and \$1,500.00 in 2017-18)  
First Nations Development Institute Ag Grant (\$35,000 awarded in March 2017)  
McCune Foundation (\$10,000 2017)  
SFCF Protecting NM Env. Award (\$15,000 2018)  
US Fish and Wildlife Partners Program (\$11,750.00 to be disbursed Spring 2018)  
New Mexico Environment Fund (\$15,000 2018-19)  
New Mexico Community Foundation, Permaculture Fund(\$20,000, 2019)  
Presbyterian Hunger Project (\$5,000, 2019)

Total grant support 2016-2020:  
(Est.) \$147,250

**Volunteer hrs: \$61,280**

**Sponsors+Donors+Other In-Kind**

**Contributions: \$55,474**

**Grant Support:  
\$147,250**

**Total: \$264, 004**

**Total Project Budget:  
\$250,000**



## Sponsors+Donors (\$500 or more)

Academy for the Love of Learning  
City of Española (Partner) -- matching grant at the end of 2017  
Hacienda De Guru Ram Das, Espanola  
GRD Health Center  
Del Norte Credit Union  
Presbyterian Hunger Project  
Santa Claran Hotel and Casino, Santa Clara  
Development Corporation  
Las Cumbres Community Services  
Taos Youth and Reconciliation Council  
Unitarian Church of Los Alamos  
United World College

**24 donors who gave \$500 or more  
Total amount of these sponsors and  
donors=\$34,474**

**Additional Donations from nearly  
100 community members(<\$500)=  
\$5,000**

**Other In-Kind Contributions:  
\$16,000+**



Tewa Women United /  
Española Healing Foods Oasis

# Opening Community Day in the Garden!

SATURDAY, APRIL 27, 2019  
9 AM - 1 PM

- OPENING PRAYERS
- PLANTING + GARDEN MAINTENANCE
- INTRODUCING THE ESPAÑOLA SEED LIBRARY!
- FREE AND OPEN TO EVERYONE!

PLEASE BRING: STURDY SHOES, HAT, WATER BOTTLE, SACK LUNCH (WE'LL PROVIDE SNACKS AND WATER)

The Española Healing Foods Oasis  
is located next to the Española Public Library  
(313 N Paseo de Oñate) and behind City Hall



# Tewa Women United – EJ Grant Project

- Key take-aways
- Recommendations for tribes and indigenous peoples considering applying for an EJ financial assistance program



# Zender Environmental Health Research Group

EJ CPS Cooperative Agreement Recipient (2018)

- Lynn Zender, Executive Director, Zender Environmental Health & Research
- Simone Seballo, Deputy Director, Zender Environmental Health & Research
- Vanessa Tahbone, Environmental Coordinator, Kawerak Inc.

# An Environmental Justice Problem

---

There is no safe way to discard hazardous and potentially harmful waste in rural landfills.



***Materials come in...but there is no organized & consistent way of getting them back out.***

# A Project of the Solid Waste Alaska Taskforce

---



# SWAT

**Solid Waste Alaska Taskforce**

# Backhaul Alaska

*Building a Self-Sustaining Waste Removal  
Program for Rural Alaska*



# State, Federal, And National Partners: THANK YOU!!!

---



# A coalition of coalitions...THANK YOU!!!

---

- Alaska Tribes that have provided input
- Rural Stakeholders Everywhere
- Alaska transporters and recyclers
- Training Curriculum Advisory Board
- Backhaul Alaska Advisory Board
- Adopt a Barge Planning Committee
- Regional Tribal Operations Committee
- Office of the Hon. Senator Lisa Murkowski

# Zender Environmental Health Research Group

## What We Applied For:

EJ CPS Cooperative Agreement (Yr 2018)

## Why?:



With all the non-local agencies and large, international companies involved that are based in Anchorage or DC, the needs & advice of the 200 small and isolated tribal communities could get lost.

## What Happened?:

We got it!!! The grant supports the time and efforts of the participating pilot tribes to provide feedback, and it supports outreach materials that are geared to what the tribes want for their people.

## How:

- ✓ A good idea
- ✓ Support letters
- ✓ Attention to Headers
- ✓ Focusing on Evaluation Criteria

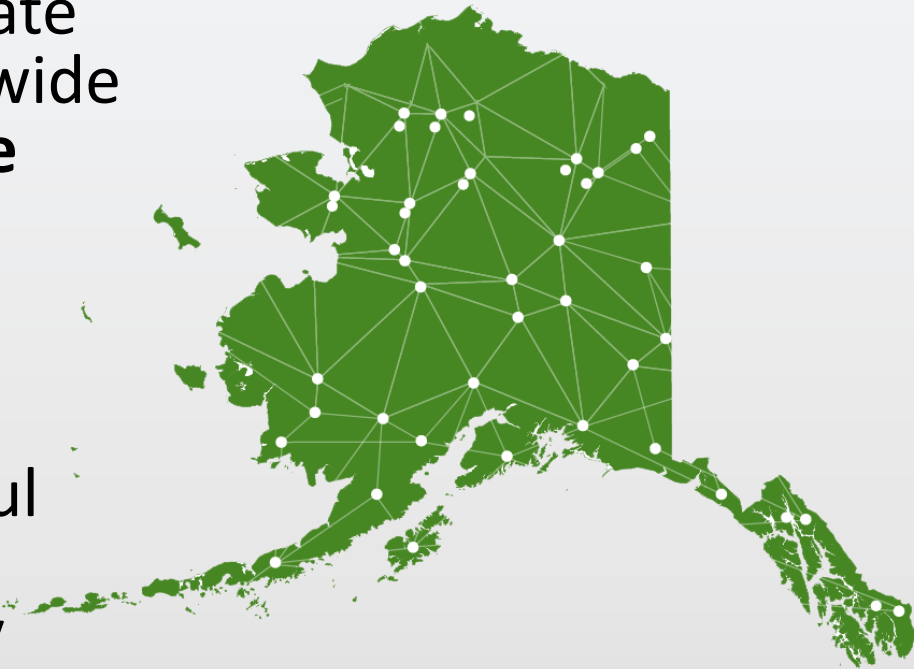


# Vision for Backhaul Alaska

---

Backhaul Alaska will coordinate waste backhaul efforts statewide and **save costs through more efficient routing, training, communications, and price brokering.**

The **ultimate goal** of Backhaul Alaska is to **operate as a full management service** for any entity generating waste in rural Alaska and provide jobs.



# Backhaul Alaska Program Overview

---

Backhaul Alaska will coordinate the hauling of hazardous waste and recyclables out of rural Alaska communities through:



- **Control Tower:** coordinates transportation logistics between haulers and villages



- **Network of Coordinators:** village backhaul leads, regional coordinators, and a state manager communicate with each other and provide assistance when needed



- **Uniform Training Program:** ensures that wastes are packaged in a safe, uniform way that reduces liability and risks



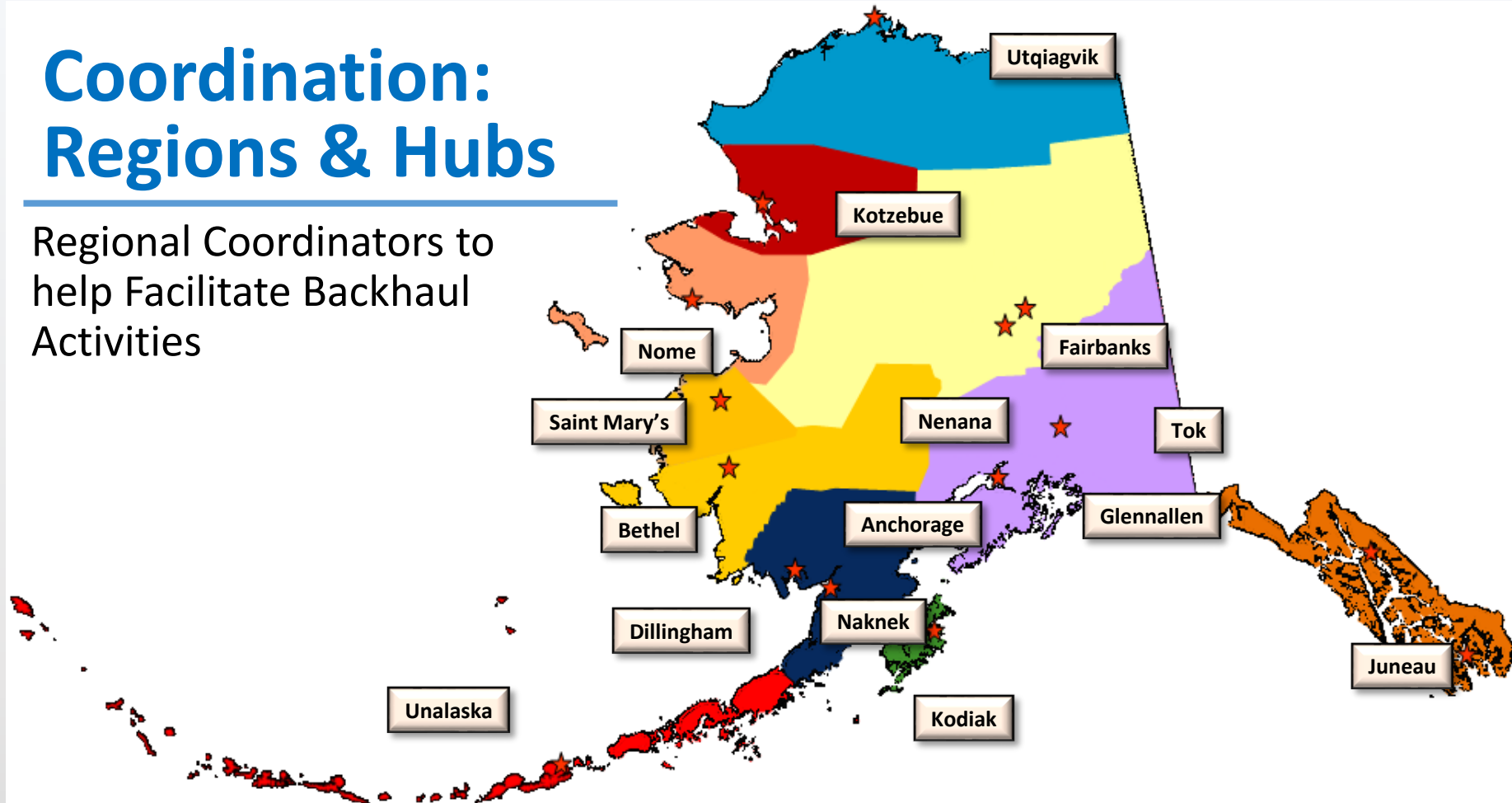
- **Commodity Brokering:** ensures the highest revenue for recycled materials to offset the cost of backhaul



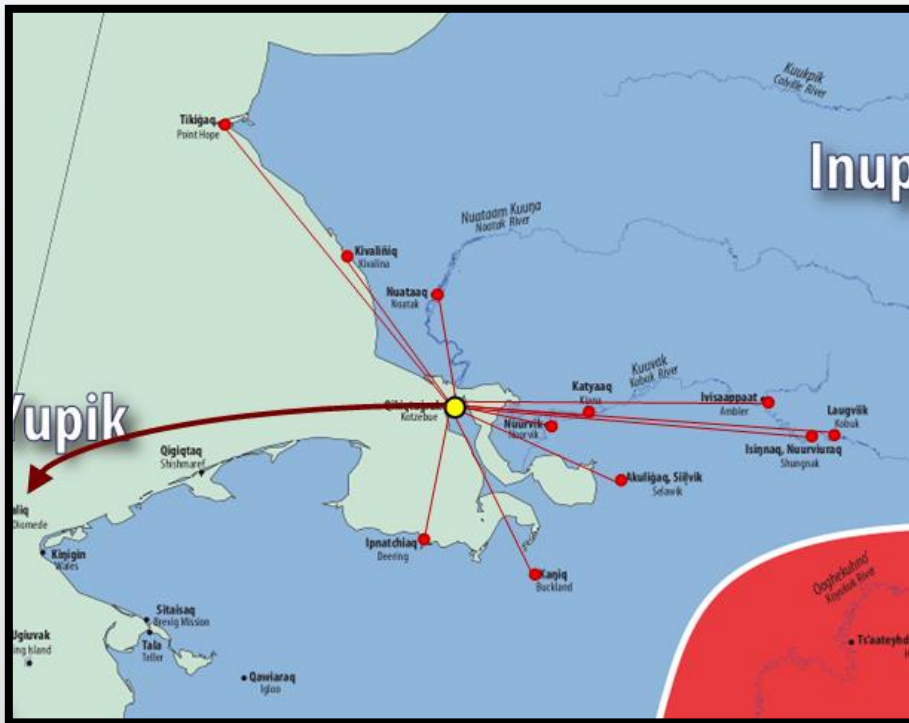
- **Bulk Supply Purchasing:** provides villages with supplies needed for backhaul storage and transportation at reduced prices

# Coordination: Regions & Hubs

Regional Coordinators to help Facilitate Backhaul Activities



# Backhaul Alaska uses a “Hub & Spoke” Model Approach



# EJ Grant – Feedback Sessions

---



# Backhaul Alaska Program Overview



**BACKHAUL ALASKA**

Protecting Subsistence Resources • Create Jobs • Remove Toxins

[Homepage](#)

[Program](#) ▾

[Training](#) ▾

[Get Involved](#)

[News](#)

[Contact Us](#)

[Donate](#)

## Rural Alaska Communities have no safe place for hazardous waste.

Backhaul Alaska coordinates its removal – protecting subsistence resources, creating jobs, and removing toxins from the land we all call home.



*Overview of the Backhaul Alaska Program*

[Learn More about the Program](#)

[Donate](#)

# KAWERAK BACKHAUL PROGRAM

Kawerak receives an EPA IGAP consortia grant to help coordinate regional backhaul & recycling programs.

Kawerak Serves 16 communities and 20 federally recognized tribes in the Bering Strait region.

Our program offers support though technical assistance and trainings put on by Kawerak and other partnering entities.



**SO WHAT DO WE DO?  
WE TRAIN, WE COLLECT, WE STAGE AND  
WE BACKHAUL!**







- ▶ We support ALPAR flying cans Alaska program.
- ▶ We do scrap metal backhaul.
- ▶ We offer hands on training and assistance in communities.
- ▶ We do outreach and education in schools and communities.

**Recycling Centers IN Nome!**

Recycling Center, located on Warren Place, open 24/7.

- Paper
- Household batteries
- Lead-acid batteries
- E-waste
- Florescent Light Bulbs and Tubes
- Aluminum Cans
- Cardboard
- Glass

Nome City Landfill, located at mile 3 on the Beam Road, open Monday, Wednesday, and Friday open 9am-3pm.

- Wood
- Glass
- Metal
- Copper
- Aluminum cans
- E-waste
- Cardboard and burnable
- Refrigerators & Freezers

to keep your environment clean!

**IN ADDITION TO BACKHAULING**



**EVERY YEAR WE BACKHAUL 50,000 LBS. OF HAZARDOUS RECYCLABLES OUT OF OUR REMOTE VILLAGES AND OUT OF THE REGION.**

- ▶ We use a local air carrier to get items from the communities to Nome.
- ▶ We utilize our barge system for our scrap metal recycling.
- ▶ If we are able we use the road system or river system.

We do what we can to use the resources we have to get as much of the material out and that means getting creative.



**BUILDING PARTNERSHIPS LIKE  
BACKHAUL ALASKA ALONG THE WAY!**



**KAWERAK REGIONAL  
BACKHAUL PROGRAM  
THANKS ALL WHO HAVE  
HELPED MAKE THIS  
PROGRAM A SUCCESS  
THROUGHOUT THE MANY  
YEARS AND FOR THE  
YEARS TO COME!**



**KAWERAK, INC.**

# Backhaul Alaska Pilot

- **Collect lots of data**
- **Test specific circumstances**
  - Logistics
  - Infrastructure
  - range of community sizes
  - Internal Financing
- **Every community is different so making it work is like a jigsaw puzzle. But its worth it because each piece moves us to our vision of a safe & healthy communities.**



# The Pilot works with 26 tribes all over the state

## Pilot 1

### **Interior**

- Arctic Village
- Venetie
- Nulato

### **Norton Sound**

- Golovin
- Unalakleet
- Alakanuk

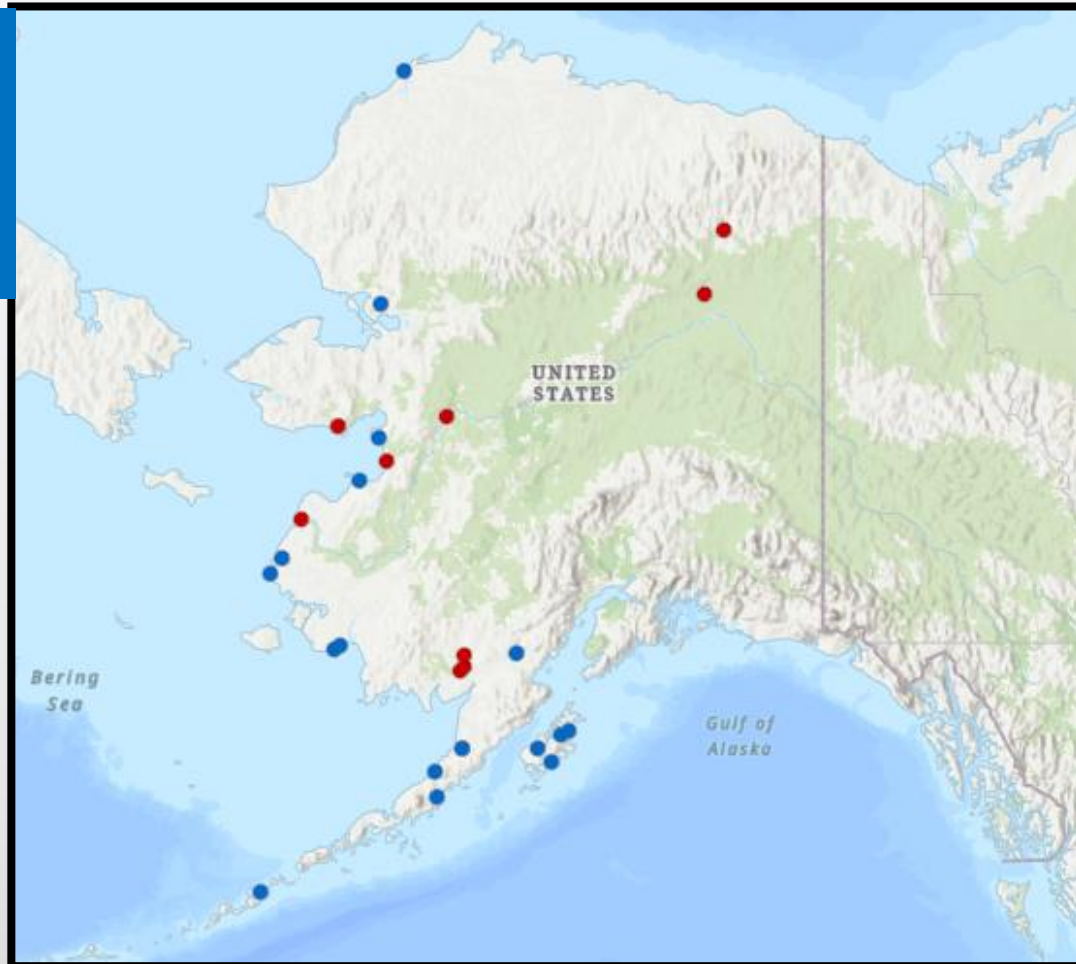
### **Western**

- Chefornak

### **Bristol Bay/Lake & Penn**

- Ekwok
- New Stuyahok
- Koliganek

- Koliganek



## Pilot 2

### **North Slope**

- Wainwright

### **Northwest Arctic**

- Noorvik

### **Norton Sound**

- Shaktoolik
- St. Michael

### **Western**

- Scammon Bay
- Hooper Bay
- Kwigillingok
- Kongiganak

### **Bristol Bay/Lake & Penn**

- Iliamna
- Port Heiden
- Chignik Lagoon

### **Kodiak**

- Port Lions
- Ouzinkie
- Larsen Bay
- Old Harbor

### **Aleutians**

- Unalaska
- Unalaska

## Pilot Phase – 250,000 pounds in two years.

<b>Total Last Summer</b> <i>(9 Shipments)</i>	
<b>Category</b>	<b>Lbs</b>
E-scrap	27,180
Lead Acid	45,108
UW Lamps	956
<b>TOTAL</b>	<b>73,244</b>

<b>Anticipated</b> <b>Total Next Summer</b> <i>(16 Shipments)</i>	
<b>Category</b>	<b>Lbs</b>
E-scrap	50,000
Lead Acid	134,000
UW Lamps	4,000
<b>TOTAL</b>	<b>188,000</b>

# How it Works on the Ground

- Training
- Planning
- Site Visits
- Shipping  
(Backhaul)





# Comprehensive Training

---

## Standardized Training Curriculum...

- Backhaul Best Practices
- Compliance Oriented
  - Safety
  - Labeling
  - HazMat
- Authorized Signers



# Planning

## Preparing for a Successful Backhaul

- Inventory
  - Backhaul Items
  - Access to heavy equipment
  - Access to shipping containers
- Supplies
- Logistics



# Pilot Program – Site Visits

---

## Assessing Readiness

- Confirm Inventory
- Assist in Packaging
- Provide additional training, if needed
- Confirm the backhaul is on schedule



# Pilot Program – Alakanuk

---



# Shipping

---



# Shipping: The Past

*Why Transporters & Recyclers support us.*



# Shipping: The Present

---

*“Good afternoon, I just wanted to let you know the trailers that arrived were the best we have ever seen...Thank you for all what a difference you have made!!.” – Recycling Vendor*



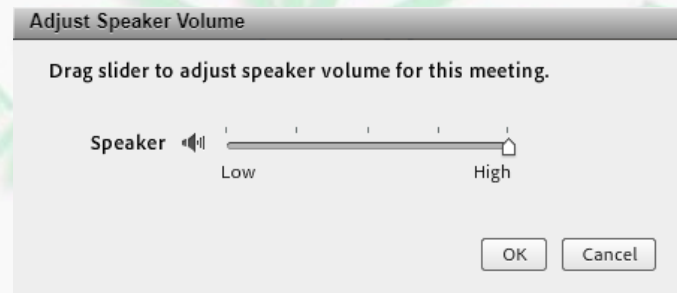
# Planning for the Future

2018	2019	2020	2021	2022	2023	2024	2025	2026	2027	2028
------	------	------	------	------	------	------	------	------	------	------

<b>Phase</b>	Pilot Phase (25 Villages)			Initial Implementation	Program Growth	Self-Sustaining Program
	<b>Funding</b>	<b>Government Grants</b> <ul style="list-style-type: none"> <li>- BIA - Kawerak</li> <li>- DOT - PHMSA</li> <li>- EPA</li> <li>- Denali Commission</li> </ul>			<ul style="list-style-type: none"> <li>• <b>Fees</b> from contributors to the backhaul waste stream</li> <li>• <b>Recycling income</b></li> <li>• <b>Donations</b> from industry, in-kind services, in-village, and regional entities</li> <li>• Exploring Product Stewardship</li> </ul>	



# Please unmute your adobe connect speaker to hear the video

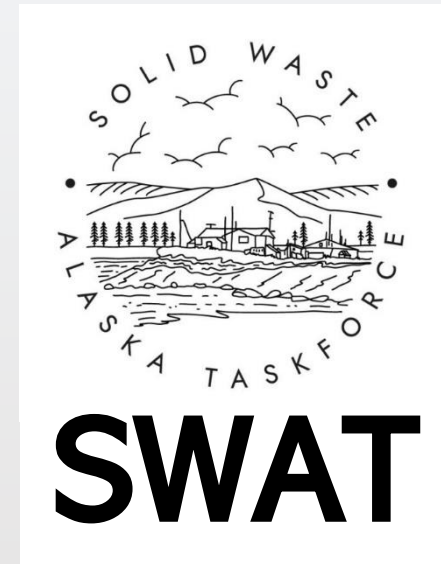


# Stay Updated

---



[www.backhaulalaska.org](http://www.backhaulalaska.org)



[www.907swat.org](http://www.907swat.org)



# Questions & Contact Information



Beata Tsosie-Pena  
Tewa Women United  
505-210-8141  
[beata@tewawomenunited.org](mailto:beata@tewawomenunited.org)



Danny Gogal, USEPA  
Office of Environmental Justice  
202-564-2576  
[gogal.danny@epa.gov](mailto:gogal.danny@epa.gov)



**KAWERAK, INC.**

**Vanessa Tahbone**  
907-443-4258  
[vtahbone@kawerak.org](mailto:vtahbone@kawerak.org)



**Simone Sebalo, Backhaul Alaska Manager**  
(907) 341-3279  
[ssebalo@zendergroup.org](mailto:ssebalo@zendergroup.org)