



EPA EJ Webinar Series for Tribes and Indigenous Peoples

Enforcement and Compliance History Online (ECHO) Tool Indian Country and Indigenous Communities

May 26, 2021

* Please note that this webinar will be recorded

Presenters

Jonathan Binder, Senior Indian Program Manager, Office of Enforcement and Compliance Assurance (OECA), EPA

Andrew Schulman, Mathematical Statistician, Office of Compliance, OECA, EPA

Scott Clow, Environmental Programs Director, Ute Mountain Ute Tribe

Facilitator - **Danny Gogal**, Tribal and Indigenous Peoples Program Manager, Office of Environmental Justice, EPA



Ensuring Compliance: An Overview of Roles and Responsibilities

EPA ENVIRONMENTAL JUSTICE WEBINAR SERIES FOR TRIBES AND
INDIGENOUS PEOPLES

MAY 26, 2021

JONATHAN BINDER– US ENVIRONMENTAL PROTECTION AGENCY

EPA Roles and Responsibilities

- ❖ **Establish regulations and policies** for federally-regulated facilities in the U.S., including those in Indian country
 - ❖ **Conduct compliance monitoring (inspections)** to identify violations and ensure compliance
 - ❖ **Initiate civil and criminal enforcement actions** to address and remedy noncompliance
 - ❖ **Directly implement** programs where tribes, states, and territories lacked an approved program
- *Note:* EPA is responsible for many more activities. The listed roles & responsibilities are designed to provide context for using ECHO

EPA Roles and Responsibilities (continued)

- ❖ **Oversight of tribes, states, and territories** implementing approved programs
- ❖ **Compliance assistance and technical assistance**
- ❖ **Coordinate with other federal agencies**
- ❖ **Financial assistance and grants**
- ❖ Policies on **consultation and coordination** with tribes, **environmental justice**, and **indigenous peoples**
- ❖ **Use data to improve compliance** and understand and address environmental and public health issues

Tribal Governments: Roles and Responsibilities

- ❖ **Promulgate laws and regulations**, including under **inherent** authority and ability to seek approval to **implement** certain **federal programs** with EPA's approval
 - ❖ **Establish environmental departments**
 - ❖ Conduct **compliance monitoring and enforcement** activities
 - ❖ Can **establish a governance structure** to oversee all/each aspect of financing and operating tribal facilities
- *Note:* Tribal governments are responsible for many more activities. The listed roles and responsibilities are designed to provide context for using ECHO

Tribal Government Roles and Responsibilities (continued)

- ❖ **Operate & maintain** tribal government facilities in compliance with applicable requirements
- ❖ **Monitor/Understand compliance** status of non-tribal government owned/operated facilities
- ❖ **Engage EPA and other federal** agencies, including on financial technical, and managerial assistance issues/needs
- ❖ **Consultation and coordination** with EPA on matters that may affect tribes or tribal interest
- ❖ **Use data to improve compliance and understand and address** environment and public health issues



Introduction to ECHO

EPA ENVIRONMENTAL JUSTICE WEBINAR SERIES FOR TRIBES AND
INDIGENOUS PEOPLES

MAY 26, 2021

ANDREW SCHULMAN – US ENVIRONMENTAL PROTECTION AGENCY

What is ECHO?

Enforcement and Compliance History Online -
<https://echo.epa.gov>

ECHO is EPA's public website that **provides compliance information** about regulated facilities:

- How they are regulated
- When they were inspected
- Whether violations of environmental regulations were found
- Whether enforcement action was taken

ECHO Content

Compliance history for more than 1,000,000 EPA-regulated facilities

Three-year compliance status and five-year inspection and enforcement history

EPA, tribal, state and local environmental agency data for:

- Clean Air Act stationary sources
- Clean Water Act permitted dischargers
- Resource Conservation and Recovery Act hazardous waste handlers
- Safe Drinking Water Act public water systems

ECHO Content (continued)

EPA data for other statutes like:

- Emergency Planning and Community Right-to-Know Act (EPCRA),
- Federal Insecticide, Fungicide, and Rodenticide Act (FIFRA), and
- Toxic Substances Control Act (TSCA):

Inspections

Enforcement Action Details

Sources of ECHO Data

ECHO extracts data from other EPA data systems, typically on a weekly basis:

- Integrated Compliance Information System (ICIS)
- Resource Conservation and Recovery Act Information System (RCRAInfo)
- Safe Drinking Water Information System (extracted quarterly)
- Facility Registry System (links EPA-regulated facilities and permits under one ID number)
- Envirofacts: Toxics Release Inventory (TRI) and Greenhouse Gas (GHG) pollutant release data for context
- Summary of Criminal Prosecutions

ECHO Features

Facility searches → *under home page*
“Search Options”

- All Data (cross-program)
- Air (stationary source)
- Water (dischargers)
- Hazardous Waste (RCRA Subtitle C)
- Drinking Water (public water systems)
- Data downloads and web services

ECHO Features (continued)

EPA Enforcement Case Search →
under home page “Find EPA Cases”

State Dashboards → *under home
page “Analyze Trends”*

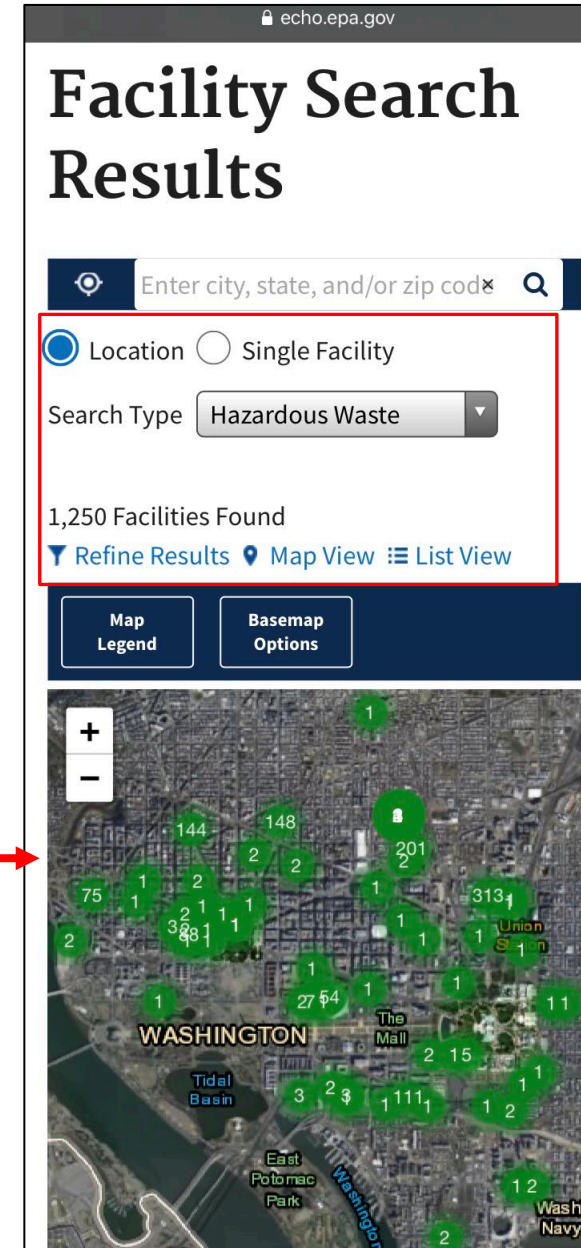
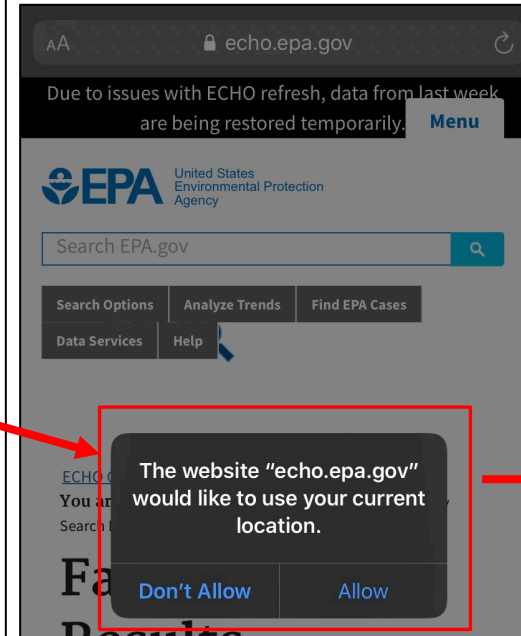
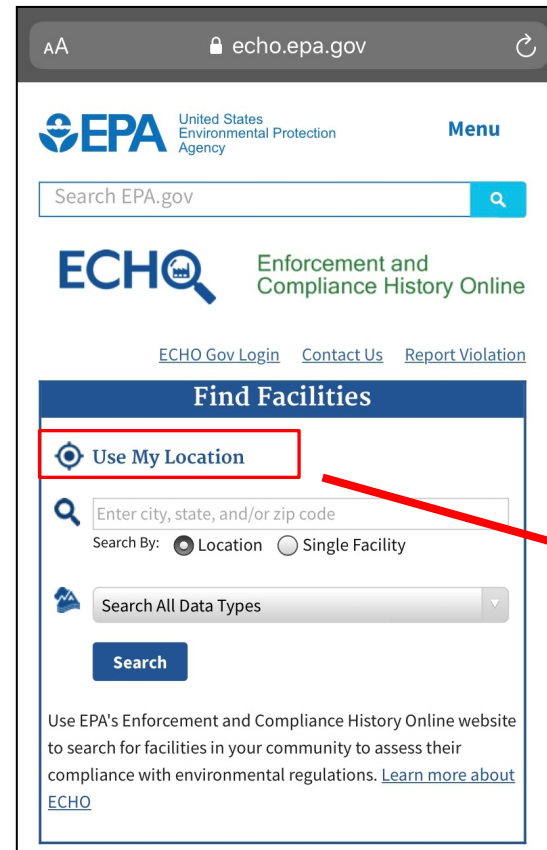
Data Downloads and Services →
under home page “Data Services”

Using ECHO with your Mobile Device

Enable Location Services on your phone.

Search on your mobile device by selecting 'Use My Location' - searches for facilities within approximately 3 miles of your current location.

A pin represents the location at the time of the search relative to the nearby facilities on the map view.



Additional Features: ECHO Gov

State, local, tribal, and federal employees may log into ECHO Gov to use government-only features:

- Inspection targeting
- Enforcement analytics
- Oversight tools

The screenshot displays the ECHO Gov website interface. At the top, the EPA logo and navigation links for 'Environmental Topics', 'Laws & Regulations', and 'About EPA' are visible. A search bar for 'Search EPA.gov' is located in the top right. The main header features the 'ECHO' logo and the text 'Enforcement and Compliance History Online'. A red box highlights the 'ECHO Gov Login' link. Below the header is a 'Quick Search' section with a sidebar menu containing 'Search Options', 'Analyze Trends', 'Find EPA Cases', 'Data Services', 'Help', and 'News'. The main search area includes a 'Search By' section with 'Location' and 'Facility Name/ID' tabs, a text input field for 'Enter city, state, and/or zip code', and a 'Search' button. Below the search form, there is a 'More Search Options' link and a list of search capabilities: 'Search for Facilities', 'Investigate Pollution Sources', 'Search for EPA Enforcement Cases', 'Examine and Create Enforcement-Related Maps', and 'Analyze Trends in Compliance & Enforcement Data'. Three icons at the bottom right represent 'Read the Quick Start Guide', 'Watch a Video Tutorial', and 'Explore the Tool Guide'.

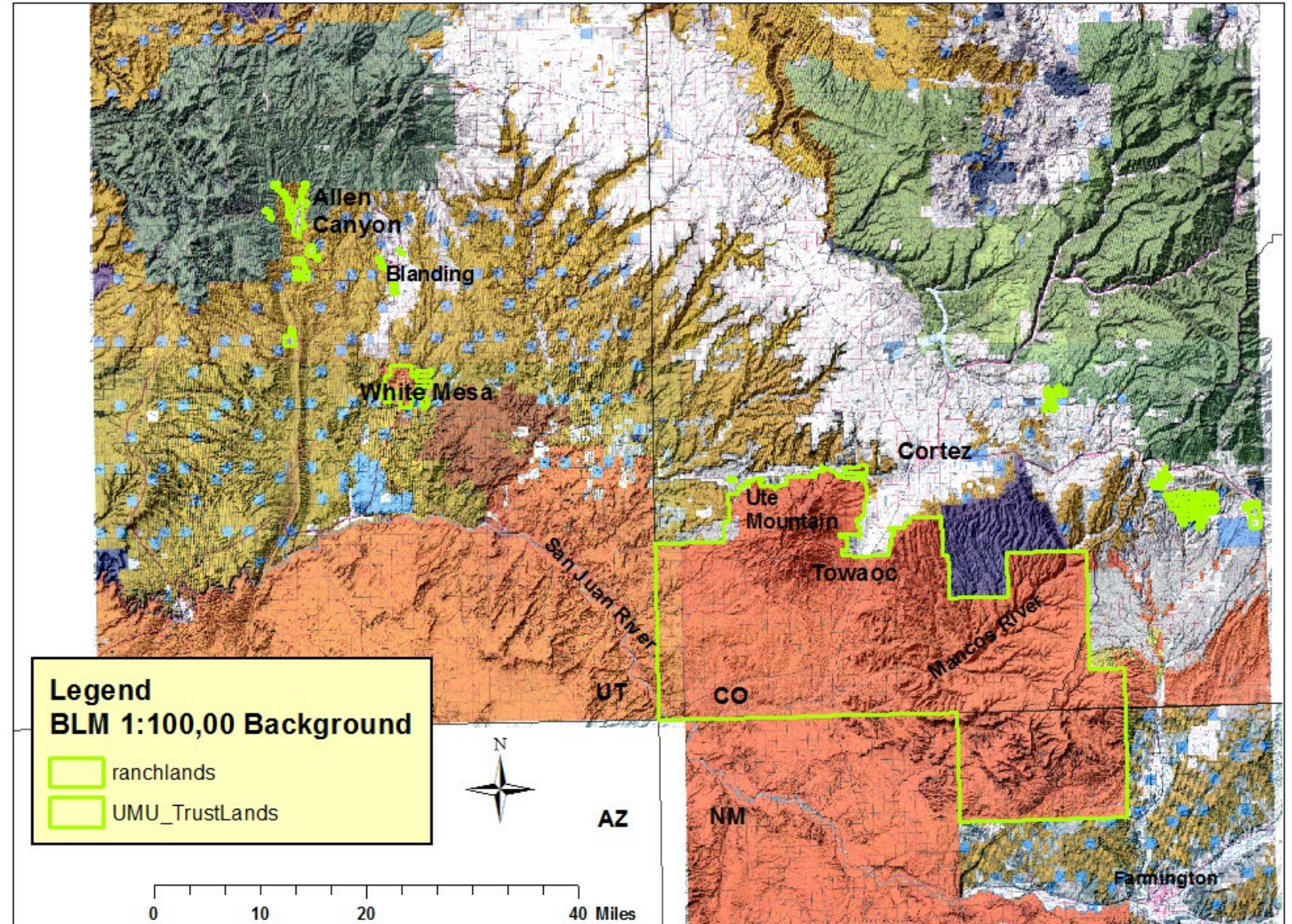
Resources

- Quick start guide: <https://echo.epa.gov/resources/general-info/learn-more-about-echo>
- Video tutorials: <https://echo.epa.gov/help/tutorials>
- Webinars: <https://echo.epa.gov/help/training>
 - Next webinar: Intro to ECHO Dashboards – June 15th from 1:30-2:30pm ET
- FAQ: <https://echo.epa.gov/resources/general-info/echo-faq>
- Contact Us: <https://echo.epa.gov/contact>
- Help: <https://echo.epa.gov/help>
- ECHO Mailing list: <https://echo.epa.gov/resources/general-info/listserv>
- Detailed Facility Report Data Dictionary: <https://echo.epa.gov/help/reports/dfr-data-dictionary>
- Search Criteria Help: <https://echo.epa.gov/help/facility-search/search-criteria-help>

ECHO Demonstration

Scott Clow,
Environmental
Programs
Director,
Ute Mountain Ute
Tribe
&
EPA Staff

Figure 1
Ute Mountain Ute Tribal Lands Near Four Corners



Questions?

If you have questions after today's presentation, please use ECHO's [Contact Us](#) page.

Contacts

Andrew Schulman
Mathematical Statistician,
Office of Compliance
Office of Enforcement and Compliance
Assurance
U.S. EPA
Schulman.Andrew@epa.gov

Jonathan Binder
Senior Indian Program Manager
Office of Enforcement and Compliance
Assurance U.S. EPA
Binder.Jonathan@epa.gov

Scott Clow
Environmental Programs Director
Ute Mountain Ute Tribe
sclow@utemountain.org

Danny Gogal
Office of Environmental Justice
U.S. EPA
Gogal.Danny@epa.gov