

Getting the most out of SmartWay



May 20, 2021



Welcome!

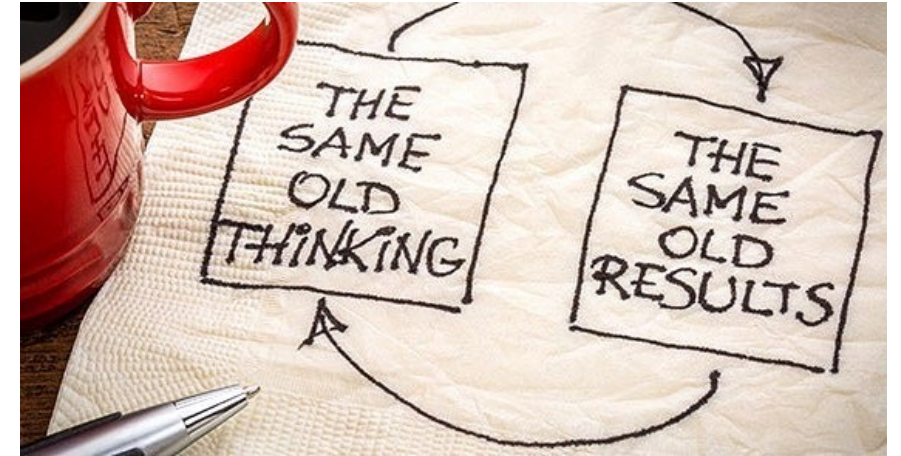


Presenter: Buddy Polovick

- 24 years at EPA, including five years Vehicle Inspection and Maintenance and then SmartWay since inception in 2001
- Before joining EPA, Buddy served in the U.S. Peace Corps as a Community Development Specialist in Mali, West Africa.
- B.A. in International Studies from THE Ohio State University (Go Bucks!) and graduate studies in Environmental & Natural Resource Policy at Michigan State University

Beyond scratching the surface

- What are the drivers for doing more with SmartWay?
- Types of CSR reporting and external communication
- Options for participation level
- Data process
- Specialized reports



Why Freight Matters

 Goods and materials moved via truck, rail, water, and air are core to businesses and communities across America

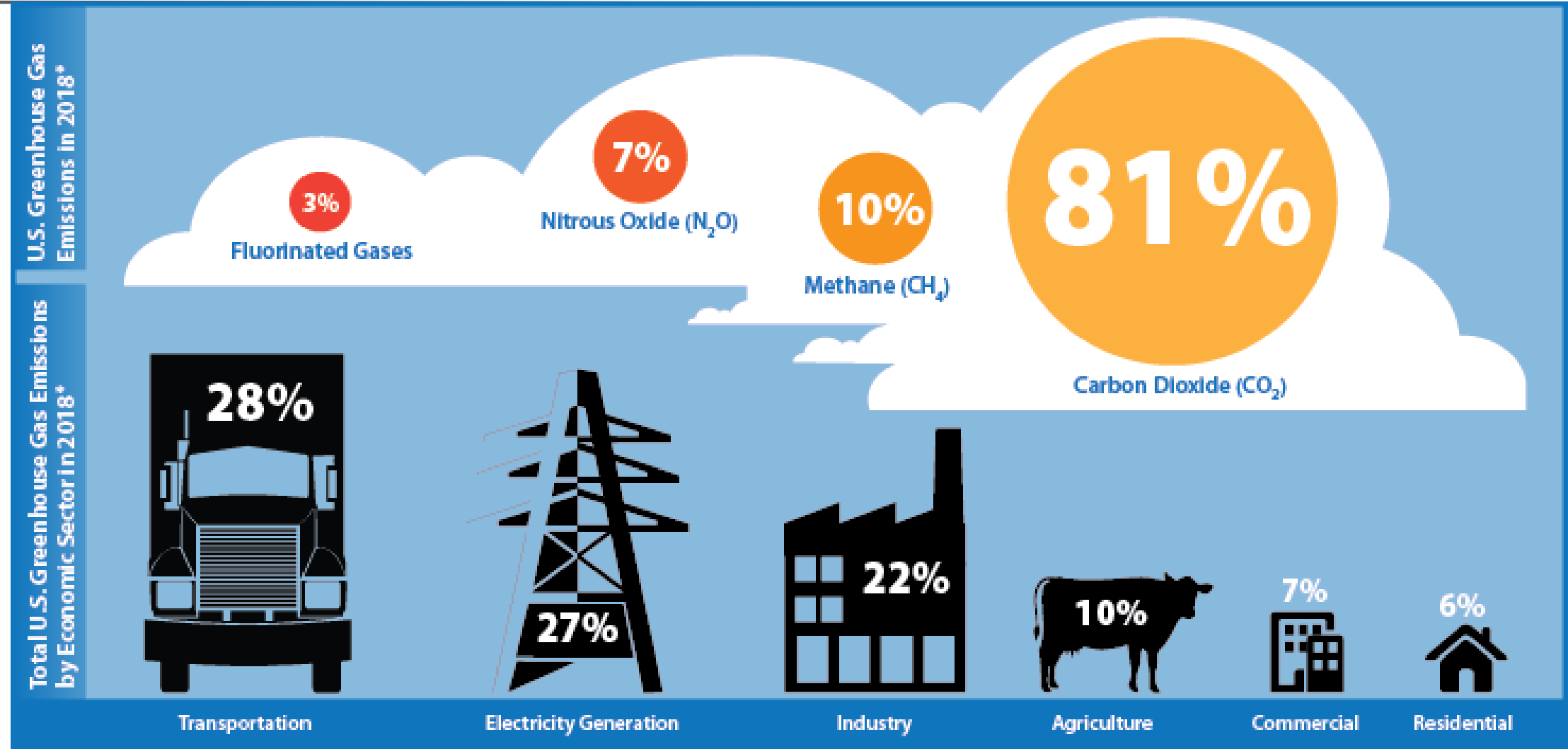
- \$51.8 billion of goods shipped daily; \$18.9 trillion annually
- 18.6 billion tons annually
- 56.9 tons per capita

 Logistics contributes to U.S. jobs and livelihoods

- 13 M U.S. jobs related to freight
- 8% of U.S. GDP (\$1.6 trillion)



Sustainability Drivers: Environmental Impacts of Transportation

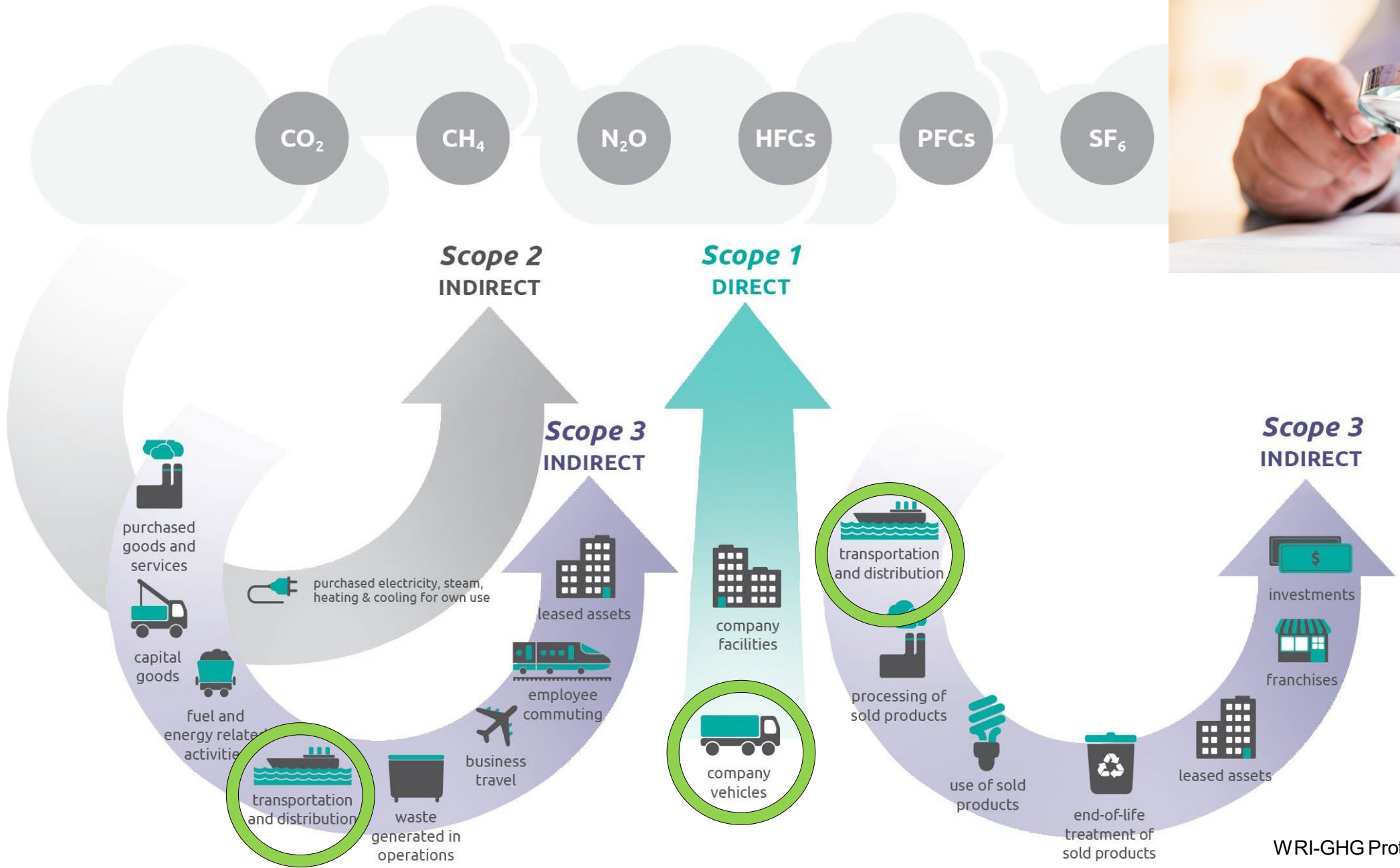


Changing Needs of Industry



- **Customer and Consumer awareness**
 - Demanding corporate citizenship and accountability
- **Investor, Lender and Insurer requirements**
 - Assessing climate risk and business opportunities
- **Rising and volatile energy prices**
 - Fuel & driver wages are largest costs for truck carriers: 66% of operating costs (2019)
- **Globalization of supply chains**
 - Global opportunities and competition
 - Other countries' carbon reporting requirements





WRI-GHG Protocol

Corporate Responsibility Reporting Platforms









- 🌿 Global Reporting Initiative: GRI
- 🌿 Carbon Disclosure Project: CDP
- 🌿 United Nations Sustainable Development Goals: SDGs



What does SmartWay have to offer?



-  Benchmarking tools
-  Data that can be used for reporting
-  Technical guidance, webinars, reports
-  Expert assistance from PAMs & staff
-  Action Plan and Goal Setting guidance
-  Leadership guidance

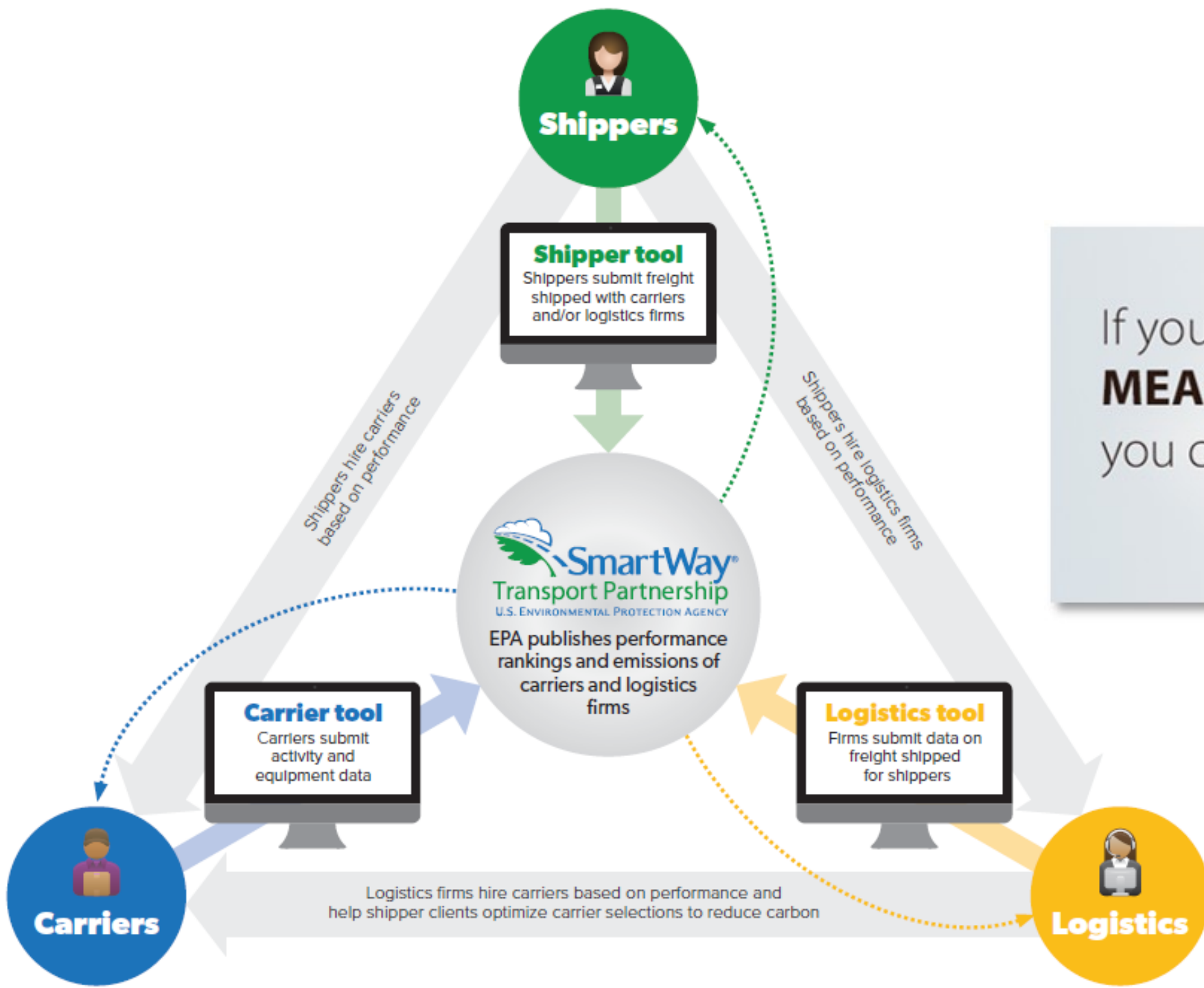


How SmartWay works



- Partners submit freight activity information using EPA assessment and tracking tools
- EPA checks data then uploads to SmartWay database
- EPA ranks freight service providers by environmental performance
- Database combines partner data with most recent EPA emission factors to calculate annual emissions footprint from transporting goods





If you can't
MEASURE it
you can't **MANAGE** it.



F O U R
WAYS TO JOIN
SmartWay

**TAKE THE ON-RAMP
TO SMARTER FREIGHT**

Learn SmartWay basics
and partner with carriers
to build your plan



**START MOVING
TOWARDS BETTER
PERFORMANCE**

Estimate freight
transportation efficiency
and set improvement
targets



**MAP YOUR ROUTE WITH
REAL ACTIVITY DATA**

Calculate activity-based
metrics and uncover
opportunities to cut
waste



**DRIVE INNOVATION
WITH ADVANCED
STRATEGIES**

Analyze activity data
with strategic benefit
calculators



There are four (4) ways shippers can participate in SmartWay. Way 1, the SmartWay Candidate level, is only for companies who want to learn more about SmartWay before joining as a SmartWay Shipper Partner. To become a SmartWay Shipper Partner, select Way 2, Way 3, or Way 4 below, complete the tool inputs, check your results and submit your tool to EPA for approval.

Select your Participation Level by checking the button [o] next to your selected option. You can change your participation level at any time, but be careful as it may result in some loss of previous data input.

<input type="radio"/> Way 2: Basic Freight Assessment	<input type="radio"/> Way 3: Standard Freight Assessment	<input checked="" type="radio"/> Way 4: Advanced Freight Assessment
<p>Best For: Shippers with limited data that want to start freight efficiency planning.</p>	<p>Best For: Shippers that want a freight emissions footprint to guide their freight decision making.</p>	<p>Best For: Shippers that want a more-detailed freight emissions footprint and added analysis.</p>
<p>Inputs: Carrier names and relative data (e.g., amount spent, number of shipments, volume shipped, or another custom metric)</p>	<p>Inputs: Carrier names; mileage, ton-miles and/or payload data per carrier</p>	<p>Inputs: Carrier names; mileage, ton-miles and/or payload data per carrier; and additional operational strategies and mode split data</p>
<p>Input Methods: Manual only</p>	<p>Input Methods: Manual or data import. You will decide your Data Input Method on the next screen.</p>	<p>Input Methods: Manual or data import. You will decide your Data Input Method on the next screen.</p>
<p>Benefits of Way 2:</p> <ul style="list-style-type: none"> • Define a relative freight performance metric (% SmartWay) • Be recognized as a Smartway Partner 	<p>Benefits of Way 3: All the benefits of Way 2 plus the ability to:</p> <ul style="list-style-type: none"> • Build a freight performance assessment based on per carrier mileage and payload • Compete for recognition through the SmartWay Excellence Awards 	<p>Benefits of Way 4: All the benefits of Way 3 plus the ability to:</p> <ul style="list-style-type: none"> • Subdivide freight activity based on inbound vs outbound, domestic vs international, discrete business units, and/or other criteria • Compare emissions savings from various mode and operational strategy changes retrospectively and prospectively • Receive additional credit for SmartWay Excellence Award

Way 3 & Way 4 Unlock Carrier Data



Carrier Performance Ratings and emissions factors, based on:

- 🌿 Fuel types and gallons consumed
- 🌿 Model year and truck class
- 🌿 Miles (revenue and empty)
- 🌿 Average Payload (Tons)
- 🌿 Road Type / Speed Categories
- 🌿 Average Annual Idle Hours per Truck
- 🌿 Particulate Matter Reduction (pre-2006)



Carrier Data Process



15 Carrier Categories

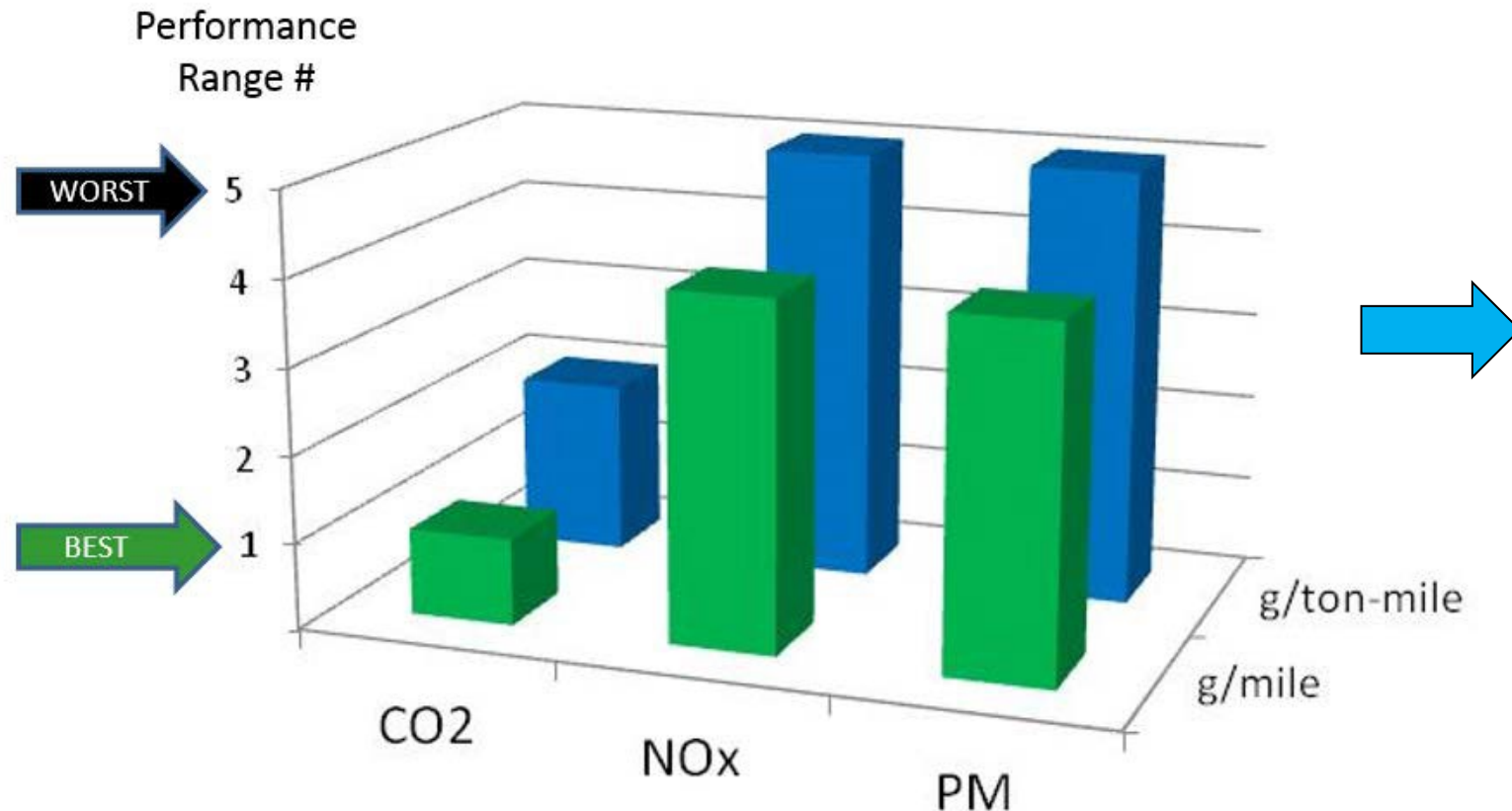
- TL, LTL, Refrigerated, Tanker, etc.

6 Emission Factors

- 2 metrics x 3 pollutants

Quintile Rankings

(ex: Truckload CO₂ g/mile)



Top 20% TL Dry Vans 600 1600 g/mile	• 1550 g/mile
Second 20% TL Dry Vans 1600 1700 g/mile	• 1650 g/mile
Middle 20% TL Dry Vans 1700 1800 g/mile	• 1750 g/mile
Fourth 20% TL Dry Vans 1800 1900 g/mile	• 1850 g/mile
Bottom 20% TL Dry Vans 1900 3600 g/mile	• 1950 g/mile

Public Carrier Performance Data



Truck Carrier Data Year: 2018; Barge Carrier Data Year: 2018; Rail Carrier Data Year: 2018; Multimodal Carrier Data Year: 2017; Logistics Carrier Data Year: 2017;

Performance Rankings
TL/Dry Van
 Click down arrows to filter data by column categories. Select one or more items in the dropdown checklists.
 Note: g/m=grams/mile and g/tm=g/ton-mile

Performance Rankings and Emission Factors

Carrier Fleet Name	Mode	SmartWay Ranking Category	Fleet Type	SCAC	MCN	US DO	Canadian NSC	Grams per Mile					Grams per Ton-mile						
								g/m CO2 Rank	g/m CO2	g/m NOx Rank	g/m NOx	g/m PM Rank	g/m PM	g/tm CO2 Rank	g/tm CO2	g/tm NOx Rank	g/tm NOx	g/tm PM Rank	g/tm PM
101 Transport, Inc.	Truck	TL/Dry Van	For-Hire	OZOT	625894	1705392	N/A	4	1675	5	5.3	5	0.042	3	86.5	5	0.31	5	0.0026
1527530 Ontario Inc./M&M Carriers	Truck	TL/Dry Van	For-Hire	MNMR	N/A	1159500	142970520	2	1495	5	5.3	5	0.042	2	79.5	4	0.25	5	0.0026
1541335 Ontario Inc./Road Link Xpress	Truck	TL/Dry Van	For-Hire	ROAD	442882	1063823	143440740	5	1765	4	4.3	5	0.042	5	100.5	4	0.25	5	0.0026
1542300 Ontario Inc. dba ASR Transportation Inc.	Truck	TL/Dry Van	For-Hire	OFTT	442369	1057019	N/A	1	1405	2	2.3	2	0.018	1	72.5	2	0.13	2	0.0011
1628939 Ontario Ltd. o/a P&D Freightlines	Truck	TL/Dry Van	For-Hire	PDGH	521737	1360591	N/A	4	1675	2	2.3	2	0.018	5	100.5	2	0.13	2	0.0011
1st Express Inc.	Truck	TL/Dry Van	For-Hire	FSEP	181440	284589	N/A	2	1495	3	3.3	5	0.042	2	79.5	3	0.19	5	0.0026
2119118 Ontario Inc. DBA Triple G Trucking	Truck	TL/Dry Van	For-Hire	TPKB	957820	2859549	N/A	3	1585	3	5.3	5	0.042	2	79.5	4	0.25	5	0.0026
2210310 Ontario Inc./Dynamic Freight Haulers	Truck	TL/Dry Van	For-Hire	DFHR	691346	1937937	N/A	4	1675	4	4.3	5	0.042	3	86.5	4	0.25	5	0.0026
2241552 Ontario Inc / Skyway Carrier	Truck	TL/Dry Van	For-Hire	SWYC	N/A	230633	N/A	3	1585	3	3.3	2	0.018	4	93.5	3	0.19	2	0.0011
2322819 Ontario Inc./Right Service Right Choice	Truck	TL/Dry Van	For-Hire	TTWT	783320	2294033	173-333-05	4	1675	3	3.3	5	0.042	2	79.5	3	0.19	4	0.0021
3NT, LLC.	Truck	TL/Dry Van	For-Hire	THLL	716290	2042543	N/A	4	1675	3	5.3	3	0.026	5	100.5	5	0.31	3	0.0016
5/D Express, Inc.: fdrp	Truck	TL/Dry Van	For-Hire	FDRP	488737	1243083	N/A	5	1765	3	3.4	4	0.034	5	100.5	4	0.25	4	0.0021
6233317 Canada Inc. DBA Rockwell Truck Line	Truck	TL/Dry Van	For-Hire	RKWT	797845	2333669	148783160	1	1405	4	4.3	5	0.042	1	72.5	3	0.19	5	0.0026
9108-1950 Quebec inc dba Via Trans International	Truck	TL/Dry Van	Private	VTIL	471471	1175764	60331659	1	1405	1	1.3	1	0.01	1	72.5	1	0.07	1	0.0006
A & A Delivery LLC	Truck	TL/Dry Van	For-Hire	N/A	N/A	3013453	N/A	1	1405	3	1.3	1	0.01	5	100.5	3	0.19	5	0.0026
A&M Transport, LLC: Dry Van Fleet	Truck	TL/Dry Van	For-Hire	ALKM	217072	344894	N/A	3	1585	3	3.3	4	0.034	3	86.5	3	0.19	4	0.0021
A&R Express Lines, Inc.	Truck	TL/Dry Van	For-Hire	AREL	035208	3022746	N/A	5	1765	2	2.3	2	0.018	5	100.5	2	0.13	2	0.0011
A&S Services Group, LLC	Truck	TL/Dry Van	For-Hire	ANSW, ASI	164166	1880751	N/A	2	1495	4	4.3	4	0.034	5	100.5	5	0.31	5	0.0026
A.C. Trucking, Inc.: 12073707	Truck	TL/Dry Van	For-Hire	AKGM	196190	281881	N/A	4	1675	3	3.3	3	0.026	1	72.5	3	0.19	2	0.0011
A.D. Transport Express, Inc.	Truck	TL/Dry Van	For-Hire	ADXR	195625	0269605	N/A	3	1585	3	3.3	2	0.018	5	100.5	3	0.19	2	0.0011
A.N. Webber, Inc.	Truck	TL/Dry Van	For-Hire	WANQ	147008	76507	N/A	3	1585	3	3.3	3	0.026	2	79.5	2	0.13	2	0.0011
A/T Transportation, LLC.	Truck	TL/Dry Van	For-Hire	AUCR	N/A	1486485	N/A	2	1495	2	2.3	3	0.026	4	93.5	2	0.13	3	0.0016
AC Leasing Company Inc.	Truck	TL/Dry Van	For-Hire	ACWH	156691	264128	N/A	3	1585	4	4.3	5	0.042	1	72.5	3	0.19	5	0.0026
ACS Logistics Transportation Inc.	Truck	TL/Dry Van	For-Hire	OFNS	548067	1450334	129295853	5	1765	4	4.3	5	0.042	4	93.5	4	0.25	5	0.0026
AGM Transport Inc	Truck	TL/Dry Van	For-Hire	AGMP	479749	1204798	N/A	2	1405	1	1.3	3	0.026	4	93.5	1	0.07	3	0.0016
AGX Freight Carriers, LLC	Truck	TL/Dry Van	For-Hire	APXY	642324	1755933	N/A	4	1675	5	5.3	5	0.042	4	93.5	5	0.31	5	0.0026
ALB Express Inc.	Truck	TL/Dry Van	For-Hire	ALBK	803750	2348464	N/A	5	1765	2	2.3	2	0.018	3	86.5	1	0.07	2	0.0011
ALTL Inc	Truck	TL/Dry Van	For-Hire	ALLM	154127	169025	N/A	2	1495	1	1.3	2	0.018	2	79.5	1	0.07	1	0.0006
AM International (TFI 11, S.E.C.): AM International	Truck	TL/Dry Van	Dedicate	AMJO	488546	1257162	61668976	5	1765	2	2.3	2	0.018	2	79.5	2	0.13	1	0.0006
AMC Express, Inc.	Truck	TL/Dry Van	For-Hire	AMCM	789656	2313051	N/A	5	1765	5	5.3	5	0.042	3	86.5	5	0.31	5	0.0026
ARD Express Inc.	Truck	TL/Dry Van	For-Hire	ARXK	588686	1590621	N/A	3	1585	5	5.3	5	0.042	3	86.5	5	0.31	5	0.0026
ASL Transportation Group, Inc.	Truck	TL/Dry Van	For-Hire	AXGN	644828	1764745	N/A	2	1495	2	2.3	2	0.018	2	79.5	2	0.13	2	0.0011
AT & R Transport	Truck	TL/Dry Van	Private	AYAE	830510	2412919	N/A	1	1405	4	4.3	3	0.026	1	72.5	3	0.19	3	0.0016
ATS 1, Inc.	Truck	TL/Dry Van	For-Hire	AQTS	767159	2210783	N/A	3	1585	1	1.3	2	0.018	5	100.5	3	0.19	4	0.0021

Start Here All Auto Dray Expd Flat HB LTL Mix Mov Pkg Reef Spec. Tank TL Logistics MM-S M ...

View results for the following company:

Beverages R US: Beverages R Us

View all three tabs to complete this step. This display shows a summary of your carrier's performance based on the selected pollutant -- CO₂, NO_x, or PM. Select a different option below to view a summary for that pollutant. The "Composite" performance shown in the top row is your company's "Emissions Footprint" for the reporting year. A more detailed presentation of performance is shown on the next tab: Carrier Performance.

Selected Pollutant:

 CO₂ ? NO_x ? PM₁₀ ? PM_{2.5} ?

short tons

Selected Carriers	Carrier Mode	SmartWay Category	Carrier Performance - CO ₂				CO ₂ Total Emissions (tons/year)
			Category Rank	g/mile	Category Rank	g/ton-mile	
Composite ?	All	All		1,553		86	513,753
A. Duie Pyle, Inc.: LTL	Truck	LTL/Dry Van	3	1,470	2	110	278
Allen Lund Company, LLC	Logistics		3	1,650	3	110	26,848
Andrus Transportation Services: ATS	Truck	TL/Dry Van	1	1,385	2	78	2,028
Arnold J. Thomas & Son Inc.: Dry Van	Truck	TL/Dry Van	4	1,655	4	92	582
Artur Express, Inc.: Artur Express	Truck	TL/Dry Van	1	1,385	1	71	340
Bett-A-Way Traffic Systems, Inc.	Logistics		4	1,950	2	101	1,841
Biagi Bros., Inc.	Truck	TL/Dry Van	3	1,565	2	78	519
Bynum Transport, Inc.	Truck	Tanker	2	1,580	2	61	1,419
C. H. Robinson Worldwide, Inc.: CHRW	Logistics		3	1,650	1	92	60,034
C.R. England, Inc.: Truckload	Truck	Refrigerated	1	1,450	1	72	77

Please select the summary report you would like to view:

Company Description

Displays all of the data you entered in the Company Description(s) section.

Input Summary

Displays all of the data you entered in the Activity Data section.

Emissions Summary

Estimates the CO₂, NO_x, and PM emissions by carrier mode for your companies.

Carrier Performance

Estimates the CO₂, NO_x, and PM emissions by individual carrier for each of your companies.

Emissions Footprints by Company

Estimates the CO₂, NO_x, and PM emissions footprints by individual carrier for each of your companies.

SmartWay Category Detail

Estimates the CO₂, NO_x, and PM emissions by Truck SmartWay category for each of your companies.

% SmartWay

Displays the fraction of carrier activity performed by SmartWay carrier partners by carrier mode for each of your companies.

Comments

Displays all of the comments that have been entered throughout the Tool.

Out of Range

Displays all of the values throughout the Tool that were not within the expected range.

Data Sources

Displays all of the data source information you provided throughout the Tool.

Feedback/Recruiting Assistance

Displays the feedback and recruiting targets information you provided in the Feedback and Recruiting Assistance sections.

Mile & Weight Improvements

Displays the emission reductions totals for all the data you entered in the optional Mile & Weight Improvements section of the Tool.

Modal Shift Impacts

Displays the emission reductions totals for all the data you entered in the optional Modal Shift Impacts section of the Tool.

Public Disclosure Report

Displays the Scope 3 emissions.



? This tool has been reviewed by [The World Resource Institute](#) for conformance with



Public Disclosure Report

Report generated on: 10/22/2018

Tool: Shipper

Data Year: 2017

Partner: Let Me Count The Ways Shipping

Inventory Period: January 1, 2017 to December 31, 2017

Scope 3 Category	CO ₂ Emissions (metric tonnes)	Percent of emissions calculated using data from SmartWay carriers (%)
Category #4 - Upstream Transportation and Distribution	350,378.7	82.39%

Emissions of biogenic CO₂ (metric tonnes): 7,150.6
Category #4 - Upstream Transportation and Distribution

Emissions of non-GHGs:

Pollutant	Amount (metric tonnes)
NOx	2,263.3
PM10	58.5788
PM2.5	58.5788

Public Disclosure report



Page: CC14. Scope 3 Emissions

CC14.1

Please account for your organization's Scope 3 emissions, disclosing and explaining any exclusions

What Does a CDP report look like?

Upstream transportation and distribution	Relevant, calculated	70968	<p>This source contains upstream transportation of materials to and from our facilities from 10 of our largest transportation vendors representing approximately 57% of our total transportation by spend. We directly contacts our transportation vendors to receive information about their emissions. Emissions associated with all FedEx Ground, Express and Freight deliveries to our facilities are provided in an annual report by FedEx. Other transportation vendors provided MTCO2e/Year or Miles Travelled/Year associated with their shipments. If the transportation vendor did not directly provide emissions data, we utilized EPA's SmartWay emission rates for vendors and applied these rates to their Miles Travelled/Year. EPA's SmartWay Partners fleet emissions rates are found at: https://www3.epa.gov/smartway/forpartners/performance.htm</p>	100.00%
--	----------------------	-------	--	---------

What Does an SDG report look like?



Transportation

SmartWay® certification, a U.S. Environmental Protection Agency (EPA) program, plays a key role in our transportation carrier performance management process and sourcing decisions. We work with more than 200 SmartWay carriers which account for more than 95 percent of our total ton-miles* in North America.

Our commitment to sustainability is proud to be a registered SmartWay shipper.



Over the past five years, we have achieved a **40 percent reduction in CO₂/ton-mile*** emissions among SmartWay Carriers

**Transportation metric representing one ton of product transported one mile, compiled from outbound shipping data from major mills and warehouses.*

Our Strategic Carrier Council fosters strong alignment between our business and 10 strategic transportation carrier partners in the areas of industry trends, legislation, risk management, safety and sustainability. The council has been in place for four years, and it helps create shared value, increase transparency and position us as a shipper of choice.

But Wait...

**THERE'S
MORE!!!**



SmartWay Shipper Performance Report



SmartWay Shipper Performance Report

Based on 2020 Tool Submission Using NAICS 31
PREPARED FOR: Collegium, Inc.

This executive report provides important information on Collegium, Inc.'s participation in the U.S. EPA's SmartWay Transport Partnership. This confidential report is based on data reported in the 2020 Shipper Tool, for the prior year's activity.

THE BASICS

Member Since: 2019

Your Company's Executive Contact to SmartWay: Cindy Yakahama

Your Company's Day-to-Day SmartWay Contact: Max Frake

SmartWay Partner Account Manager (PAM): Mary Walsh
Phone: 734-214-4205 Email: walsh.mary@epa.gov

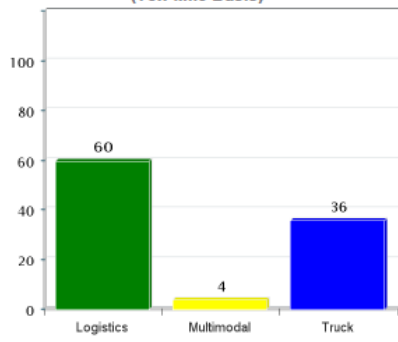
Collegium, Inc.'s SmartWay performance is a reflection of the efficiency of the freight carriers hired to move its products and supplies, and the internal steps taken to improve the company's transportation and logistics system.

This report provides various measures to evaluate the efficiency and environmental performance of Collegium, Inc.'s freight operations.

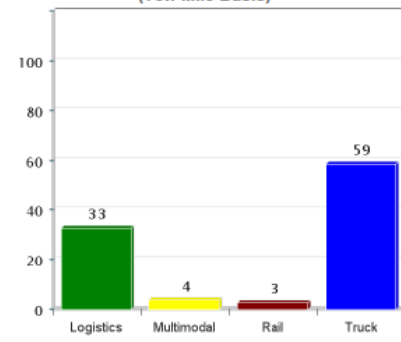
HOW DOES COLLEGIUM, INC. MOVE FREIGHT?

Freight can be shipped via multiple modes, such as truck, rail, barge, air, and ocean-going carriers, with varying costs and speed. Your goal of reducing costs to move freight is aligned with the goal of reducing air emissions. Understanding the energy intensity and environmental impact of your modal options will help you to make more informed choices that still meet your needs. Note: Totals may not add to 100% due to rounding.

Your Carrier CO₂ Emissions % by Mode (Ton-Mile Basis)



Your NAICS Peers' CO₂ Emissions % by Mode (Ton-Mile Basis)

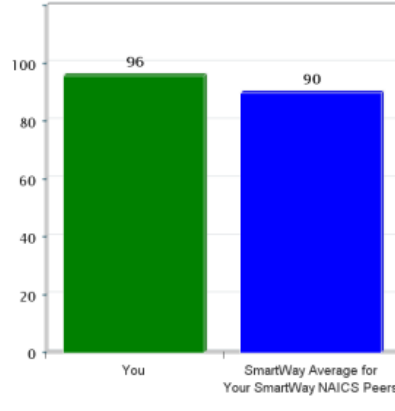


TIP: The more freight you ship with rail and barge, the lower your overall carbon emissions will be. Shippers can reduce their carbon footprints by shipping with less carbon-intensive modes.



It is beneficial to ensure that your firm ships as much freight as possible with SmartWay registered carriers and logistics providers. By incentivizing your current carriers to register with SmartWay and/or by selecting SmartWay carriers that are already registered, you will be able to do more complete and accurate carbon benchmarking and reporting. When a carrier joins SmartWay, it commits to measure and report its annual emissions. This measurement process is often a first step to improving freight operations, so shippers who incentivize their carriers to join SmartWay are helping their carriers as well as themselves. Full transparency and accurate accounting of freight emissions helps your firm to better understand, optimize and reduce freight emissions. The proportion of freight that you ship with SmartWay registered carriers, and the performance of those carriers, has implications for achieving the SmartWay Excellence Award and other recognition opportunities.

Percent of SmartWay Carriers (all modes) and Logistics Providers by Ton-Mile



This graph indicates how your proportion of ton-miles of freight shipped with SmartWay carriers compares to your NAICS peers among SmartWay Shippers submitting activity data. Encouraging and incentivizing non-SmartWay carriers and logistics providers to participate in SmartWay enables you to get a more complete carbon footprint analysis. A shipper's carbon footprint equals the sum of the carbon footprints of its carriers.

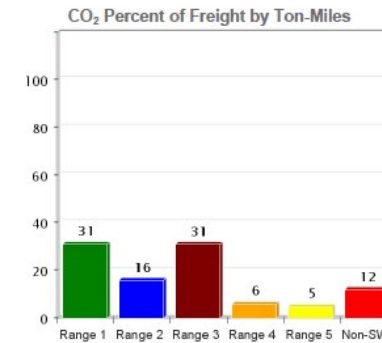
TIP: Work with your SmartWay Partner Account Manager (PAM) to reach out to any of your non-SmartWay carriers and logistics providers to help get them registered.

HOW CLEAN AND EFFICIENT IS COLLEGIUM, INC.'S FREIGHT?

Freight transportation is receiving growing attention as an area to reduce costs and improve the environmental performance of an organization's supply chain. Shareholders and investors are increasingly interested in supply chain performance, driving more companies to include freight emissions in their corporate social responsibility reports, the Global Reporting Initiative, Carbon Disclosure Project and similar reporting frameworks. SmartWay provides its partners with key freight data that enables companies to select efficient carriers, optimize the efficiency of their transportation systems, and credibly report on their progress to their stakeholders and the public.

In addition to providing detailed emissions measures for assessing freight performance, SmartWay also provides a simplified performance ranking system for the most common carrier types (trucking and logistics). Carrier fleets in these modes are divided into 5 Performance Ranges, roughly composed of 20% of fleets in each Performance Range. Performance Range 1 is the most efficient and Performance Range 5 is least efficient. By studying the distribution of your carriers across these five performance ranges, you can quickly determine if you are using the cleanest carriers available. You can observe this for all of the pollutants (CO₂, NO_x, and PM), and for both the gram per mile and the gram per ton-mile measures.

Proportion of Your Carriers by CO₂ Grams per Ton-Mile Performance Range (Truck Freight)



Your Percentage of SmartWay Usage

Use this information to identify what proportion of your freight is carried by the most efficient carriers (Performance Range 1) to the least efficient carriers (Performance Range 5), or non-SmartWay carriers.

TIP: Using more of the higher-performing SmartWay carriers will directly reduce your total emissions.

TIP: Incentivizing existing carriers to improve performance and raise their bin rating will reduce your footprint.

TIP: The performance of non-SmartWay carriers is unknown and assumed to be lowest efficiency. Encourage them to register with SmartWay so they can demonstrate performance.

- Number of SmartWay Carriers - All Modes
REPORTING YEAR: 2019 (2018 Data Year)
287
- REPORTING YEAR: 2020 (2019 Data Year)
276
- Percent of SmartWay Carriers - All Modes
REPORTING YEAR: 2019 (2018 Data Year)
63%
- REPORTING YEAR: 2020 (2019 Data Year)
76%

Compared to the average of your NAICS peers, here is how you did in 2019 (reported in your 2020 Shipper Tool).

Percent of Carriers Used that are SmartWay Carriers

- YOUR COMPANY: 76%
- YOUR PEERS: 64%

Previously in this Tool, you calculated your freight transportation emissions based on your specific carrier base. On this screen you can input information that will allow you to determine emission savings based on eliminating miles or weight from your transportation network. These savings may either be based on past actions that reduced miles or weight from your system, or you may use this screen for future scenario planning to reduce emissions. Please list at least one strategy to take miles or weight out of your freight network. Only strategies that you have actually implemented (retrospective) count for this requirement, or for SmartWay Award credit. What-if scenarios (prospective) are for your planning purposes only. As a Way 4 Shipper, you need to complete either this tab, the Carrier Subdivision tab, or the Modal Shift tab.

Add Activity

Select a category: Miles removed from system

Pick an activity:

Select time frame:

Use the button below to access information on quantification and documentation of your activities:

Basic Quantification and Documentation of System Activities

				Results (Tons/Year)				Data Source / Methodology
Selected Activities	Weight	CO2	NOx	PM10	PM2.5			
1. <input type="button" value="Remove"/>	Air		0	0	0	0	Internal tracking - shipments moving directly to final distribution centers and bypassing consolidation hubs	
Name: Bottler Direct Shipments	Rail		0	0	0	0		
Category: Miles removed from system	Truck	2	5,957.54567	15.40139	0.32646	0.32646		
Activity: Routing optimization	Multimodal		0	0	0	0		
Period: Retrospective	Logistics		0	0	0	0		
	Barge		0	0	0	0		
2. <input type="button" value="Remove"/>	Air		0	0	0	0	Increased payloads on average by 500 lbs by collaborating with customers to increase ordering minimums.	
Name: Increased payload density	Rail		0	0	0	0		
Category: Weight removed from system	Truck	1	2,948.68422	7.62291	0.16158	0.16158		
Activity: Payload optimization	Multimodal		0	0	0	0		
Period: Retrospective	Logistics		0	0	0	0		
	Barge		0	0	0	0		
Total Emission Reductions (Tons/Year)			8,906.22989	23.02430	0.48805	0.48805		

This screen allows you to estimate retrospective or prospective emission savings from modal shifts. Different emission factors will be available based on the carrier modes selected. In some cases, the emission factor can be based on your own carrier fleet mix, for others, only a modal default will be available, or the user may supply their own emission factors. Please list at least one modal shift strategy. Only strategies that you have actually implemented (retrospective) count for this requirement, or for SmartWay Award credit. What-if scenarios (prospective) are for your planning purposes only. As a Way 4 Shipper, you need to complete either this tab, the Carrier Subdivision tab, or the Distance & Weight

1. Carrier Mode		2. Emission Factor Source		3. Amounts		4. Data Source and Optional Filters		Efficiency (units specified in Step 3)		Total Emissions Reductions (tons/yr)	
								Before	After		
				Units: Miles		<input type="button" value="User Input Data Source"/>					
From:	Truck	Shipper's Carrier Average	500,000					CO2	1,669.4	980	325.95345
To:	Rail	Modal Average	550,000			Optional		NOx	2.03231	14.38	-7.59806
		Prospective				Inbound/Outbound: Inbound		PM10	0.01463	0.4263	-0.25039
<input type="button" value="Delete"/>						Domestic/International: All		PM2.5	0.01463	0.405	-0.23748
				Units: Miles		<input type="button" value="User Input Data Source"/>					
From:	Truck	Modal Average	250,000					CO2	1,578.0	33,448.0	-6939.15993
To:	Air - Long Ha	Modal Average	200,000			Optional		NOx	5.586	301	-64.81976
		Prospective				Inbound/Outbound: All		PM10	0.2052	1.98	-0.37997
<input type="button" value="Delete"/>						Domestic/International: All		PM2.5	0.199	1.98	-0.38168

Partner Results



- Since 2004, the number of companies that rely upon SmartWay has grown from 15 to over 3,700
- SmartWay Partners have saved over \$41 billion in fuel costs and reduced harmful air pollutants by
 - 133 million tons of CO₂
 - 2.6 million tons of NO_x
 - 109,000 tons of PM
- SmartWay Partner energy savings are equivalent to 312 million barrels of oil OR eliminating annual energy use in 18 million homes

“EPA's SmartWay Transport Partnership is an example of how the trucking industry can work in a way that improves the environmental sustainability of the global supply chain.”
- Chris Spear, President and CEO, American Trucking Associations





www.epa.gov/smartway

smartway_transport@epa.gov

SmartWay Helpline

734-214-4767