



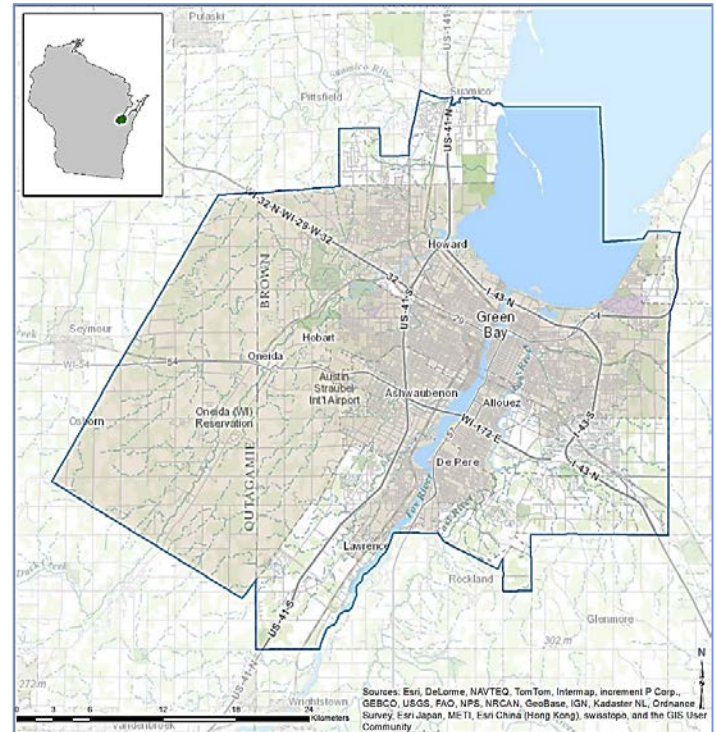
## Green Bay, WI and surrounding area

Towns and cities rely on clean air, clean water, green space, and other natural amenities for economic sustainability and quality of life, yet their benefits are not always fully understood or considered in local decisions. EPA and its partners are producing EnviroAtlas to help communities better use environmental assets for public good.

EnviroAtlas includes an online interactive mapping application that anyone can use. The interactive map contains over 200 maps available for the U.S., as well as 100+ fine-scale maps for selected U.S. communities about existing and potential benefits from the local natural environment. The EnviroAtlas community component is based on 1-meter resolution land cover data. Information derived from these data is summarized by census block groups; more spatially explicit map layers are also provided. This fact sheet highlights some of the many community data layers available for the featured area of Green Bay, Wisconsin.

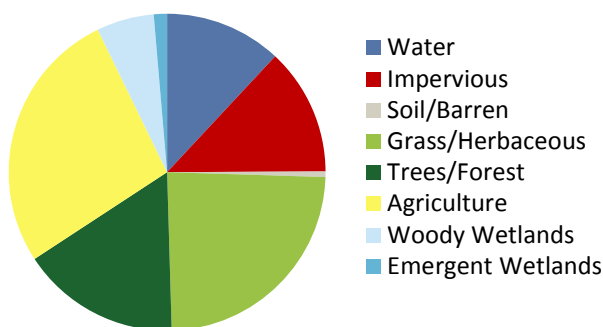
### Background

The Green Bay, Wisconsin area was chosen as an EnviroAtlas community based on a request from EPA Region 5. In addition, it affords the opportunity to include Tribal territory—the Oneida Tribal lands. The EnviroAtlas boundary for the Green Bay area was determined using the 2010 Census definition of an Urban Area with the addition of the Oneida Tribal Lands. In addition to Green Bay and Oneida, it includes portions of DePere and Ashwaubenon, as well as towns within Outagamie and Brown Counties. The area measures 727 square kilometers, and encompasses 155 census block groups.



The Green Bay area is in the Southeastern Wisconsin Till Plains ecoregion. It has severe, humid climate with warm summers and harsh winters. The region is vegetated with transitional hardwood forests, oak savannahs, and tall grass prairies; there is also significant agriculture. The leading industries are manufacturing, financing, medical, and insurance. Humana, Schneider National, and the Oneida Nation of Wisconsin are among largest employers in the area. The demographics of the Green Bay community area indicate that the potential exists for income and other disparities in the distribution of environmental assets. EnviroAtlas includes demographic maps that can help screen for potential health and well-being disparities

Percent Land Cover in Community Area



Green Bay Area Demographics  
2010 Census

Total population	219,947
Under 13 years old	18.08%
Over 70 years of age	8.30%
Other than white/non-Hispanic	18.75%
Below twice the poverty level	26.86%

resulting from disproportionate distribution of “green infrastructure.”

## Ecosystem Services Overview

In EnviroAtlas, the benefits humans receive from nature are grouped into seven categories that demonstrate the interconnectedness of these ecosystem services:

- Clean air
- Clean and plentiful water
- Natural hazard mitigation
- Climate stabilization
- Recreation, culture, and aesthetics
- Biodiversity conservation
- Food, fuel, and materials (data available only for communities with farm land)

Examples of some of the data included in EnviroAtlas are detailed below:

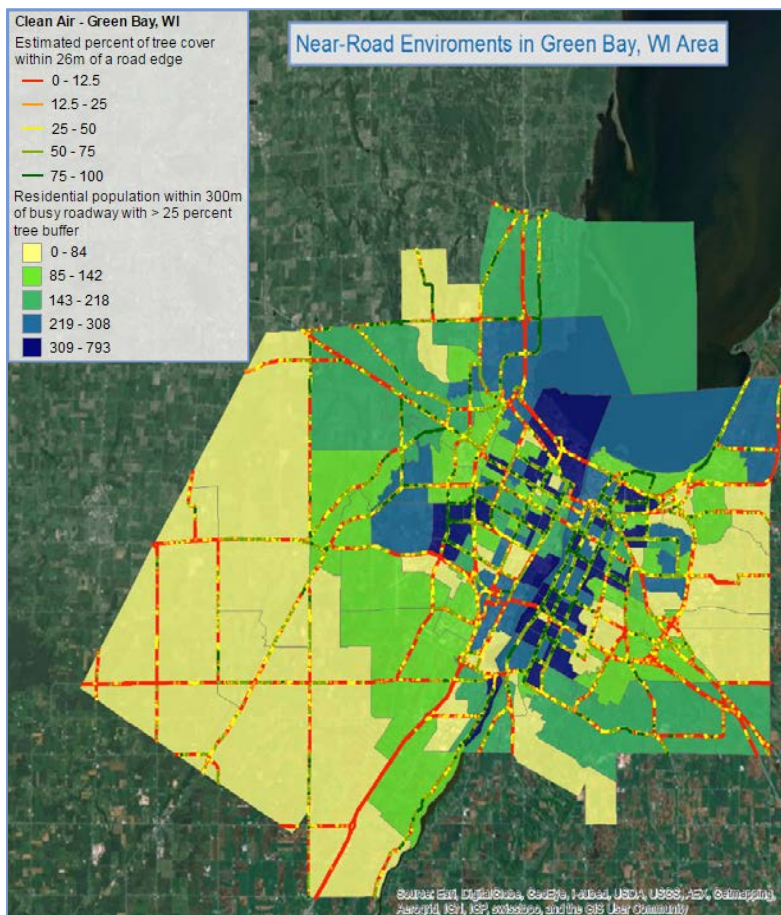
### Stream and Lake Buffers

Natural land cover adjacent to streams and rivers, sometimes called the riparian area or zone, helps protect water quality and supply for drinking, recreation, and aquatic habitat. The EnviroAtlas community component analyzes stream and lake buffers with widths of 15 and 50 meters.

- An estimated 3.1% of Green Bay’s land area is within 15 meters of a stream or lake.
- 54% of Green Bay’s 15 meter stream and lake buffers are forested.

### Near-Road Environments

Studies indicate that the capacity of trees to filter air may reduce the health impacts of vehicular pollution. In EnviroAtlas, you can find analyses of tree coverage near



The distribution of tree cover near busy roadways

busy roads.

- 15 percent of the estimated Green Bay population lives within 300 meters of a busy road with >25 percent tree buffer (yellow to blue block groups in the figure above).
- 75 percent of the busy roadways in Green Bay have >25 percent tree buffer (roadways indicated by red and orange lines in the figure above).

## EnviroAtlas Tools and Features

- Learn more about and download EnviroAtlas data: <https://www.epa.gov/enviroatlas/enviroatlas-data>
- Search our data layers and access their fact sheets: <https://www.epa.gov/enviroatlas/enviroatlas-dynamic-data-matrix>
- Explore data for the Green Bay community area in our interactive mapping application: <https://www.epa.gov/enviroatlas/enviroatlas-interactive-map>
- Use our Eco-Health Relationship Browser to explore ecosystems, the services they provide, and their benefits to human health and well-being: <https://www.epa.gov/enviroatlas/enviroatlas-eco-health-relationship-browser>
- Contact us with questions about EnviroAtlas: <https://www.epa.gov/enviroatlas/forms/contact-enviroatlas>

EnviroAtlas combines maps, graphs, and other analysis tools, fact sheets, and downloadable data into an easy-to-use, web-based educational and decision-support tool. EnviroAtlas helps users understand the connections between the benefits we derive from ecosystem services and the natural resources that provide them. For more information, please visit [www.epa.gov/enviroatlas](http://www.epa.gov/enviroatlas).