



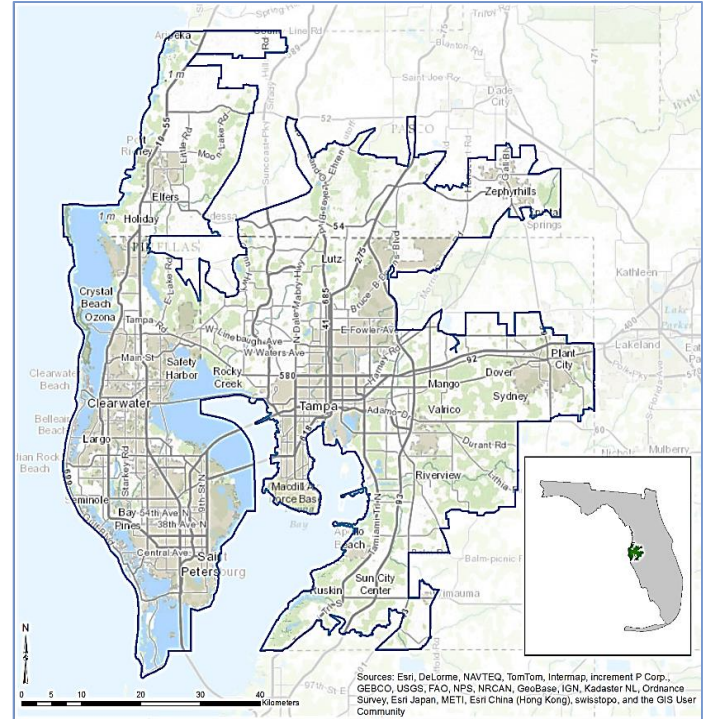
## Tampa, FL and surrounding area

Towns and cities rely on clean air, clean water, green space, and other natural amenities for economic sustainability and quality of life, yet their benefits are not always fully understood or considered in local decisions. EPA and its partners are producing EnviroAtlas to help communities better use environmental assets for public good.

EnviroAtlas includes an online interactive mapping application that anyone can use. The interactive map contains over 200 maps available for the U.S., as well as 100+ fine-scale maps for selected U.S. communities about existing and potential benefits from the local natural environment. The EnviroAtlas community component is based on 1-meter resolution land cover data. Information derived from these data is summarized by census block groups; more spatially explicit map layers are also provided. This fact sheet highlights some of the many community data layers available for the featured area of Tampa, Florida.

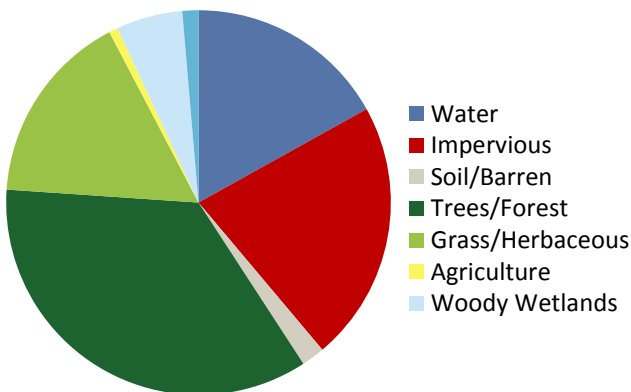
### Background

The Tampa, Florida area was chosen as an EnviroAtlas pilot community based on its inclusion in [EPA's Ecosystem Services Research Program](#). The EnviroAtlas boundary for the Tampa area was determined using the 2010 Census definition of an Urban Area. It includes Tampa, Clearwater, and St. Petersburg, as well as portions of Hillsborough, Pinellas, and Pasco Counties. The Tampa area measures 3,757 square kilometers, and encompasses 2,434 census block groups.



The Tampa, Florida area is in the Southern Coastal Plain ecoregion. It has a mild, humid, sub-tropical climate with hot, humid summers and mild winters. This area is vegetated with longleaf pine flatwoods and savannas, although much of the area has been converted to agricultural use. The community has a very diverse economy and serves as the headquarters for several Fortune 1000 companies. The largest employers include Publix, BayCare Healthcare Systems and Verizon Communications. The demographics of the Tampa community area indicate that the potential exists for income and other disparities in the distribution of environmental assets. EnviroAtlas includes demographic

Percent Land Cover in Community Area



Tampa Area Demographics  
2010 Census

Total population	2,517,798
Under 13 years old	15.03%
Over 70 years of age	11.85%
Other than white/non-Hispanic	33.75%
Below twice the poverty level	31.36%

maps that can help screen for potential health and well-being disparities resulting from disproportionate distribution of “green infrastructure.”

## Ecosystem Services Overview

In EnviroAtlas, the benefits humans receive from nature are grouped into seven categories that demonstrate the interconnectedness of these ecosystem services:

- Clean air
- Clean and plentiful water
- Natural hazard mitigation
- Climate stabilization
- Recreation, culture, and aesthetics
- Biodiversity conservation
- Food, fuel, and materials (data available only for communities with farm land)

Examples of some of the data included in EnviroAtlas are detailed below:

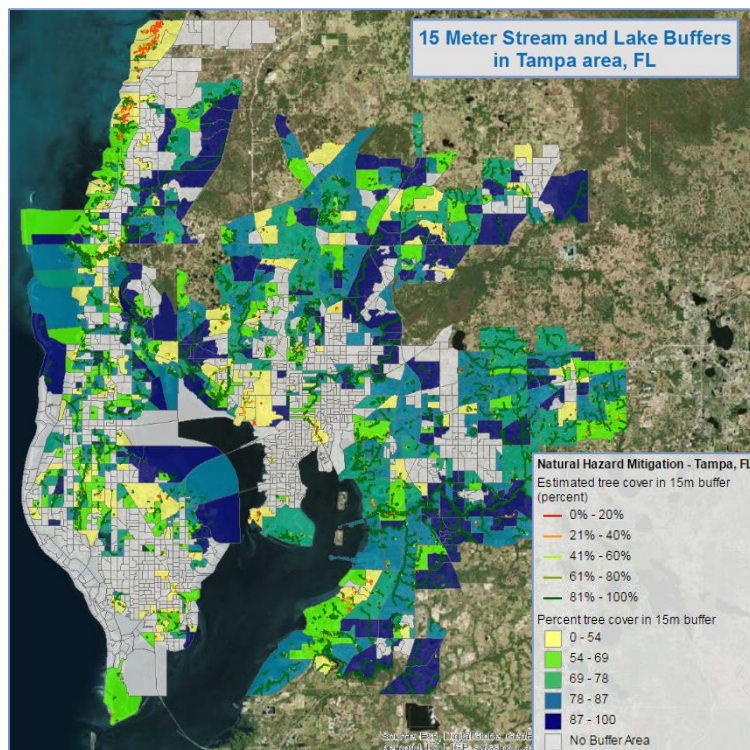
### Green Space and Trees

Research indicates that physical and visual access to trees and other green space has positive physiological, cognitive, and emotional benefits. In the Tampa community area:

- There are 872 square meters of green space per person.
- 126 out of 805 K-12 Schools have less than 25% green space within 100 meters.
- There are 11,799,050 tons of carbon stored in the local tree biomass with an additional 728,810 sequestered annually.
- 10,533,902 kilograms of ozone are removed from the air by local tree biomass every year.

## EnviroAtlas Tools and Features

- Learn more about and download EnviroAtlas data: <https://www.epa.gov/enviroatlas/enviroatlas-data>
- Search our data layers and access their fact sheets: <https://www.epa.gov/enviroatlas/enviroatlas-dynamic-data-matrix>
- Explore data for the Tampa community area in our interactive mapping application: <https://www.epa.gov/enviroatlas/enviroatlas-interactive-map>
- Use our Eco-Health Relationship Browser to explore ecosystems, the services they provide, and their benefits to human health and well-being: <https://www.epa.gov/enviroatlas/enviroatlas-eco-health-relationship-browser>
- Contact us with questions about EnviroAtlas: <https://www.epa.gov/enviroatlas/forms/contact-enviroatlas>



### Stream and Lake Buffers

Natural land cover adjacent to streams and rivers, sometimes called the riparian area or zone, helps protect water quality and supply for drinking, recreation, and aquatic habitat. The EnviroAtlas community component analyzes stream and lake buffers with widths of 15 and 50 meters.

- An estimated 1.5% of the Tampa’s land area is within 15 meters of a stream or lake.
- 73 percent of Tampa’s 15 meter stream and lake buffers are forested (shorelines indicated by red to green lines in the figure above).

EnviroAtlas combines maps, graphs, and other analysis tools, fact sheets, and downloadable data into an easy-to-use, web-based educational and decision-support tool. EnviroAtlas helps users understand the connections between the benefits we derive from ecosystem services and the natural resources that provide them. For more information, please visit [www.epa.gov/enviroatlas](http://www.epa.gov/enviroatlas).