

ADVANCE

A U.S. Environmental Protection Agency Program

Program Update and Louisiana Case Study

Webinar
June 5, 2014

Overview

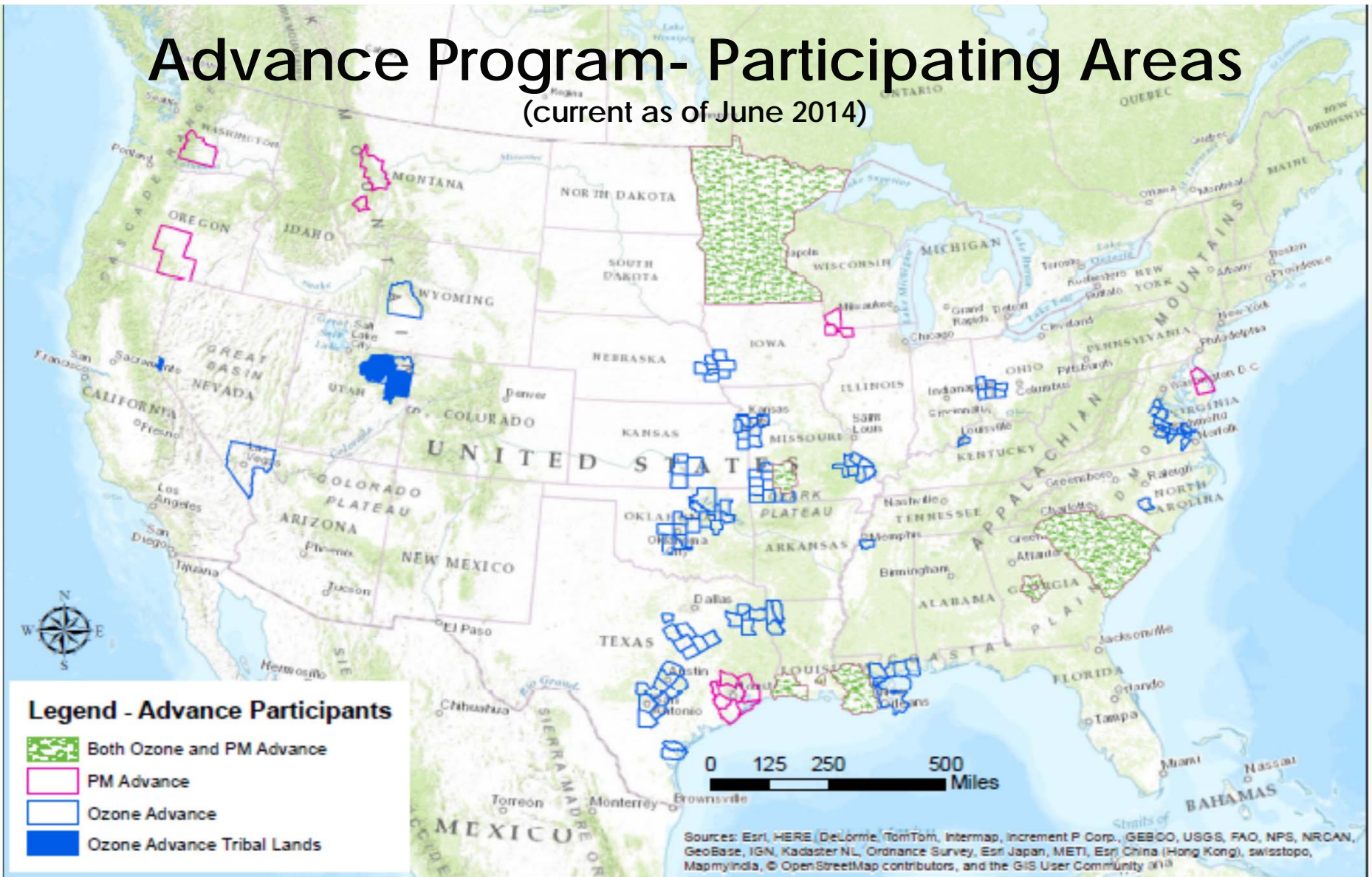
- **Update**: Laura Bunte, U.S. EPA Office of Air Quality Planning and Standards
 - Background – what is the Advance Program and who is involved?
 - What have participants been doing?
 - What has EPA been doing to support the participants?
 - What will happen next?
 - Q&A
- **Louisiana Case Study**: Michael Vince, Louisiana Dept. of Environmental Quality
 - Why did Louisiana invest in Advance?
 - How did the local areas get started?
 - How has the State supported the local areas?
 - What successes have been achieved to date?
 - Q&A

Advance Program

- The Advance Program is a collaborative effort by EPA, states, tribes, and local governments to encourage emission reductions in **attainment** areas, to help them continue to meet the National Ambient Air Quality Standards (NAAQS) for ozone and fine particulate matter (PM_{2.5}).
- Program Goals:
 - Help attainment areas to ensure continued health protection
 - Better position areas to remain in attainment
 - Efficiently direct available resources toward actions to address ozone and PM_{2.5} problems quickly
- Ozone Advance began in April 2012.
- PM Advance began in January 2013.

Advance Program- Participating Areas

(current as of June 2014)



Advance Program Participants (June 2014)

DE	Entire State (except New Castle County)	Delaware Dept. of Natural Resources and Environmental Control
GA	Macon (except Bibb County, part of Monroe County for PMA)	Middle Georgia Clean Air Coalition
KS	Wichita	City of Wichita
KY	Louisville	Louisville Metro Air Pollution Control District
IA/IL/WI	Dubuque	Dubuque Metro. Area Transportation Study; City of Dubuque; Greater Dubuque Development Corp.
LA	Baton Rouge	Capital Region Planning Commission; Baton Rouge Clean Air Coalition; Louisiana Clean Fuels
	Houma-Thibodaux	South Central Planning & Development Commission
	Lafayette	Lafayette Consolidated Government
	Lake Charles	Imperial Calcasieu Regional Planning & Development Commission
	New Orleans	New Orleans Regional Planning Commission
	Shreveport	Cities of Shreveport and Bossier City; Caddo Parish Commission; Bossier and DeSoto Parish Police Juries
MN	Entire State	Minnesota Pollution Control Agency
MO/KS	Kansas City	Mid-America Regional Council Air Quality Forum

KEY

Green = both Ozone and PM Advance

Blue = Ozone Advance

Red = PM Advance

CONTINUED...

Advance Program Participants (continued)

MO	<p>Southeast MO Springfield</p>	<p>Southeast Missouri Regional Planning & Economic Development Commission City of Springfield; Ozarks Transportation Organization; Ozarks Clean Air Alliance</p>
MS	<p>DeSoto County Gulf Coast</p>	<p>Mississippi Dept. of Environmental Quality; DeSoto County Mississippi Dept. of Environmental Quality; Gulf Regional Planning Commission</p>
MT	<p>Butte-Silver Bow Helena</p>	<p>Montana Dept. of Environmental Quality; City County of Butte-Silver Bow Montana Dept. of Environmental Quality; Lewis and Clark County</p>
NC	<p>Cumberland County</p>	<p>Cumberland County Board of Commissioners</p>
NE/IA	<p>Omaha</p>	<p>City of Omaha Public Works, Air Quality Control; Douglas County Health Dept.; Omaha Council Bluffs Metropolitan Area Planning Agency</p>
NV/CA	<p>Washoe Tribal Lands</p>	<p>Washoe Tribe of NV/CA Environmental Protection Dept.</p>
NV	<p>Clark County</p>	<p>Clark County Dept. of Air Quality</p>
OH	<p>Dayton-Springfield</p>	<p>Regional Air Pollution Control Agency</p>
OK	<p>Oklahoma City Tulsa</p>	<p>Oklahoma Dept. of Environmental Quality Oklahoma Dept. of Environmental Quality</p>
OR	<p>Lakeview</p>	<p>Oregon Dept. of Environmental Quality; Lake County; Town of Lakeview</p>

KEY

Green = both Ozone and PM Advance

Blue = Ozone Advance

Red = PM Advance

CONTINUED...

Advance Program Participants (continued)

SC	Entire State (except part of York County for OA)	South Carolina Dept. of Health and Environmental Control
TX	Austin	Central Texas Clean Air Coalition
	Corpus Christi	Corpus Christi Air Quality Group
	Hood County	Hood County Clean Air Coalition
	Houston	Houston-Galveston Area Council
	San Antonio	Alamo Area Council of Governments, Air Improvement Resources Committee
	Tyler-Longview	Northeast Texas Air Care
	Waco	Heart of Texas Council of Governments
UT	Uinta Basin	State of Utah
	Uintah and Ouray Res.	Ute Indian Tribe Reservation
VA	Caroline County	Virginia Dept. of Environmental Quality
	Fredericksburg	Virginia Dept. of Environmental Quality
	Hampton Roads	Virginia Dept. of Environmental Quality
	Richmond-Petersburg	Virginia Dept. of Environmental Quality
WA	Yakima	Yakima Regional Clean Air Agency
WY	Upper Green River Basin	Wyoming Dept. of Environmental Quality

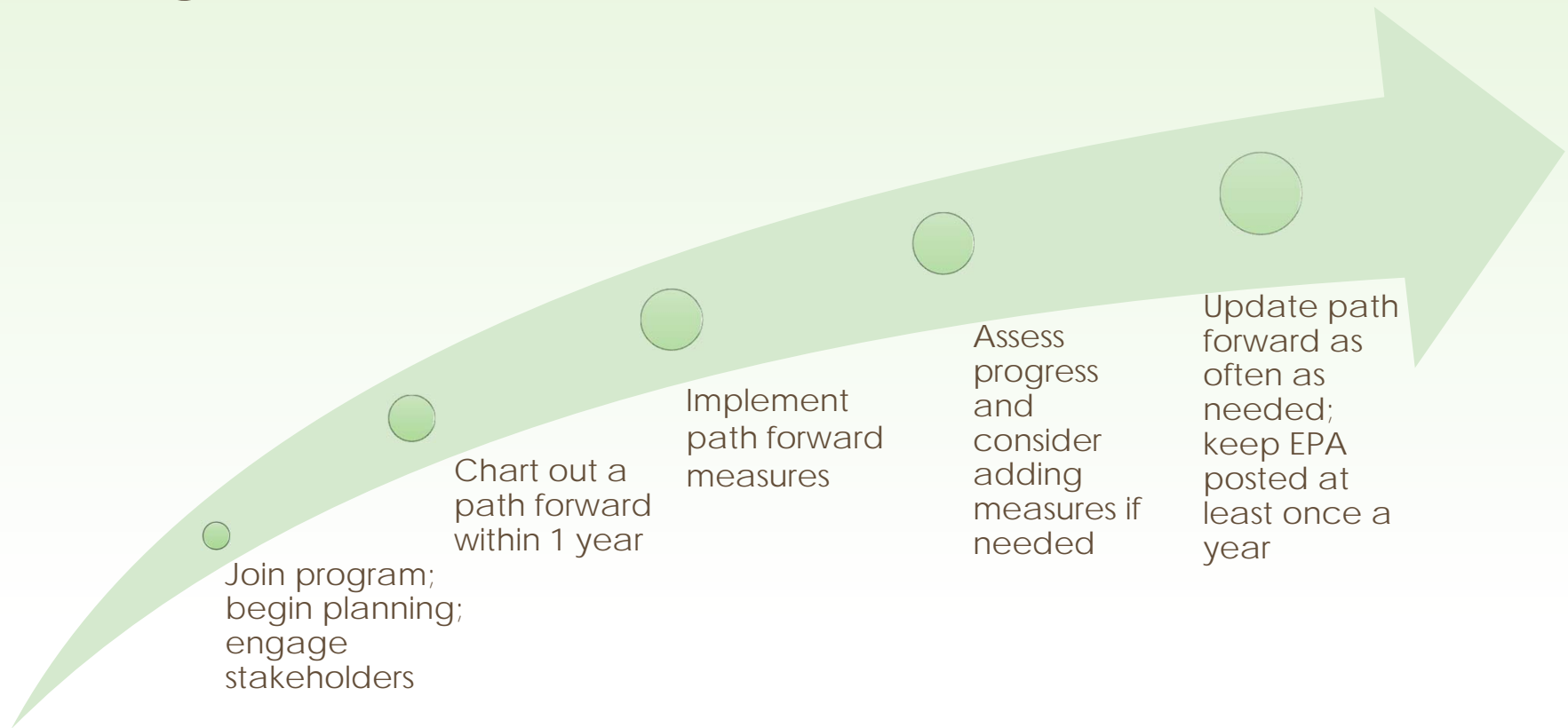
KEY

Green = both Ozone and PM Advance

Blue = Ozone Advance

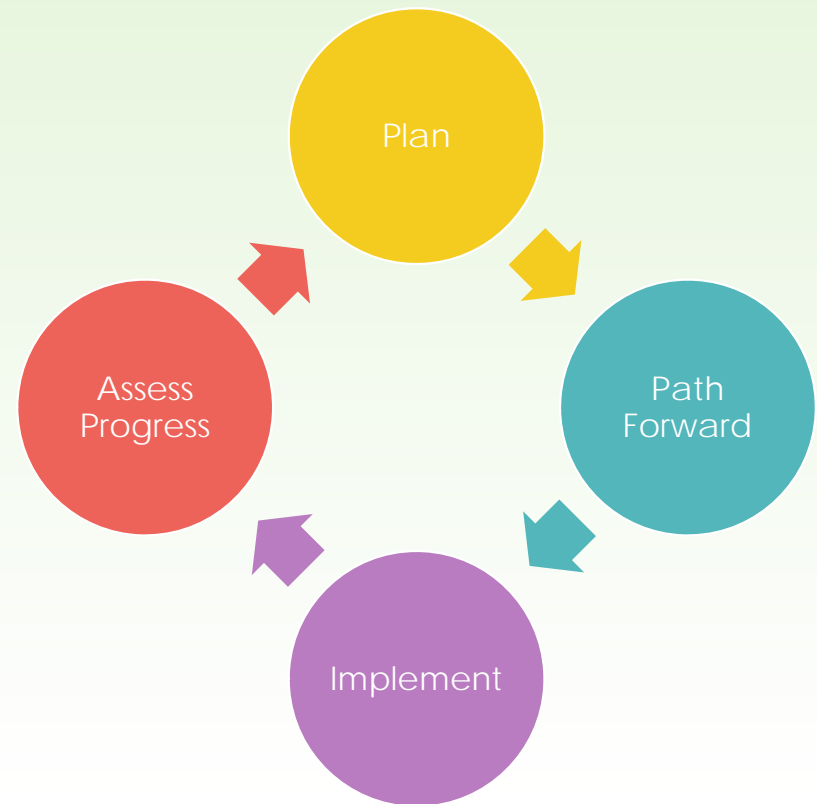
Red = PM Advance

Program Timeline



Iterative Process

- **Initiate planning; involve stakeholders**
- Document decisions in path forward; list measures/programs and anticipated schedule and any supporting information
- **Implement measures/programs**
- **Assess progress periodically; are you on track to meet your goals?**
- **Initiate planning; involve stakeholders. Consider adding measures or broadening existing measures.**
- Update path forward to reflect additions, changes.
- [Continue]



Examples of Participants' Achievements To Date

- Developing new/expanded programs
 - Education/awareness
 - Voluntary
 - Mandatory
- Establishing new stakeholder groups
- Improving coordination between local governments/agencies
- Renewing prior local air quality planning efforts
- Consolidating information about past/current programs

How has EPA been supporting Advance areas?

- Direct support via discussions with participants
- Webinars
- Development of resources/tools
- Website
- Grants information
- Connecting participants with each other

What will happen next?

- Implementation of path forward measures/programs
- Update the path forward as often as needed (no less than 1x/year)
 - Status of path forward measures/programs
 - Additional measures/programs?
 - Enhancements/updates to background information (e.g., monitoring or emissions information, etc.)
- Ozone Advance and a potential revised 2015 ozone NAAQS?
- PM Advance and final designations for the 2012 PM_{2.5} NAAQS?

EPA Regional Office Advance Program Leads

Region 1 ME, MA, RI, CT, NH, VT

Ozone Advance: Anne Arnold (617) 918-1047

PM Advance: Alison Simcox (617) 918-1684

Region 2 NY, NJ, PR, VI

Ozone Advance: Paul Truchan (212) 637-3711

PM Advance: Kenneth Fradkin (212) 637-3702

Region 3 PA, WV, VA, DE, MD, DC

Ozone Advance: Ellen Schmitt (215) 814-5787

PM Advance: Maria Pino (215) 814-2181

Region 4 KY, TN, NC, SC, GA, FL, AL, MS

Ozone Advance: Jane Spann (404) 562-9029

PM Advance: Joel Huey (404) 562-9104

Region 5 OH, MI, IN, IL, WI, MN

Ozone + PM Advance:

Steve Rosenthal (312) 886-6052

Region 6 AR, LA, OK, NM, TX

Ozone + PM Advance:

Carrie Paige (214) 665-6521

Region 7 IA, MO, KS, NE

Ozone Advance: Lachala Kemp (913) 551-7214

PM Advance: Amy Bhesania (913) 551-7147

Region 8 ND, SD, MT, WY, CO, UT

Ozone Advance: Jody Ostendorf (303) 312-7814

PM Advance: Crystal Ostigaard (303) 312-6602

Region 9 NV, AZ, CA, HI

Ozone Advance: Karina O'Connor (775) 434-8176

PM Advance: Frances Wicher (415) 972-3957

Region 10 AK, ID, OR, WA

Ozone Advance: Claudia Vaupel (206) 553-6121

PM Advance: Jeff Hunt (206) 553-0256



Questions?

Advance Program Website

www.epa.gov/ozonepadvance/

Laura Bunte

Advance Program Lead

U.S. EPA, Office of Air Quality Planning
and Standards

(919) 541-0889; advance@epa.gov



Advancing Air Quality Improvements

Michael Vince, MPA
Senior Scientist
LDEQ Air Permits Division
June 5, 2014

ADVANCE
A U.S. Environmental Protection Agency Program

Presentation Outline

- Why we invested in the program – why this is a good idea
- What was the “plan” and how did we get started?
- How we have attempted to support local areas?
- What’s our experience and is the program useful?
- What successes have the local areas seen?
- What’s next?

- Why do you think that the Advance Program is useful? Why is early action a good idea for attainment areas?

Baton Rouge Attainment History

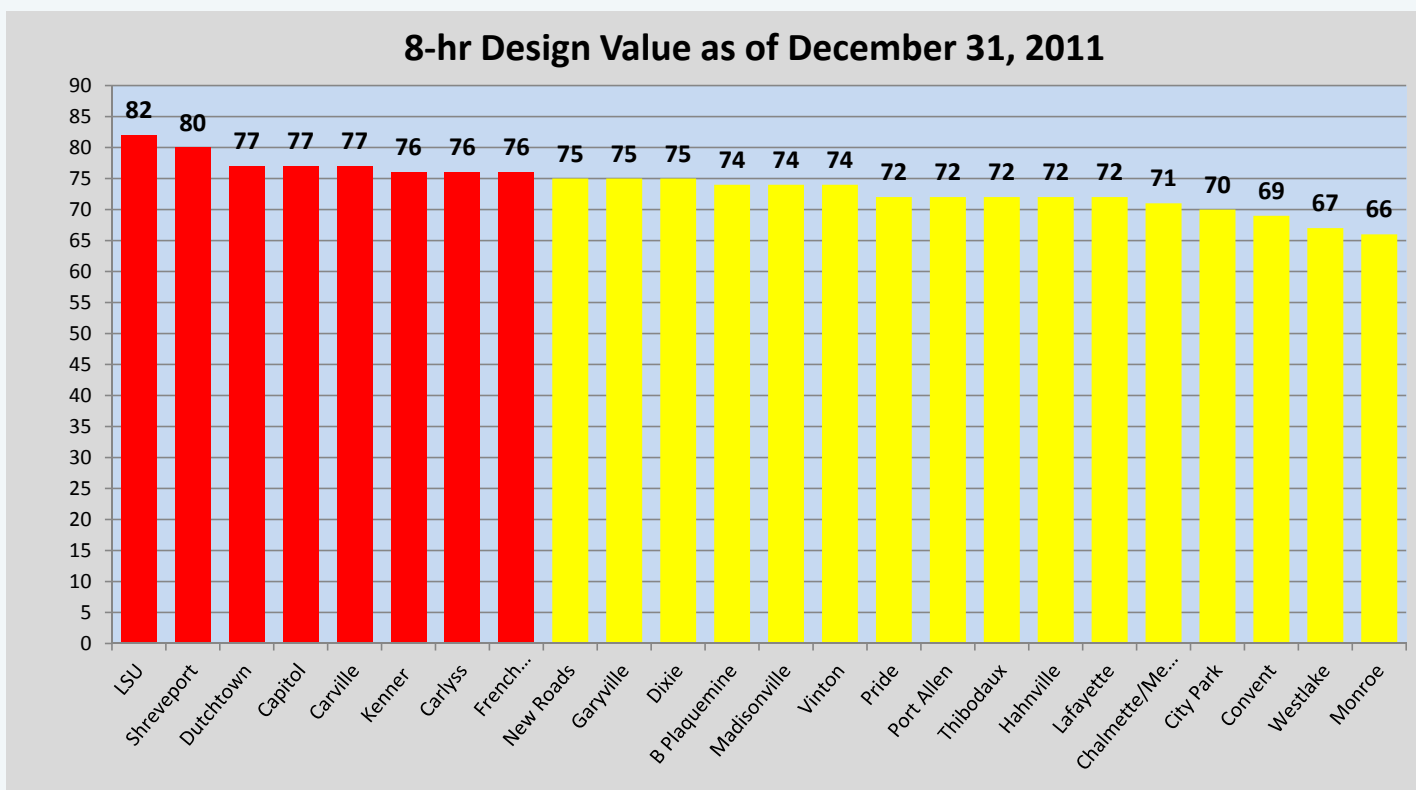
- Designated nonattainment with “Serious” classification under 1-hour ozone standard in November 1990
- EPA designated Baton Rouge as “Marginal” under new (1997) 8-hour ozone standard in April 2004
- Revocation of the 1-hour ozone standard in June 2005
- Achieved attainment for the 1 hour standard (which had been revoked) at the end of 2006.
- Demonstrated attainment for the 1997 8-hour standard in December 2010, was designated attainment in December 2011
- Designated marginal nonattainment for 2008 standard in July 2012.
- At the end of 2013, have demonstrated monitored attainment again!
- **Twenty-Four Years of Pain and Agony**

Advance Program

- Ozone announced by EPA in Spring 2012
- We saw the Advance Program as a way to continue Statewide Ozone Steering Committee efforts
- We began by contacting the 8 Statewide Planning Districts and began to set up regional meetings.
- Within a month, we went to Lake Charles, Shreveport, New Orleans, Lafourche-Terrebonne, Baton Rouge and Lafayette. We selected these areas because they were the closest to becoming nonattainment.

Why We Were Worried

2009-2011

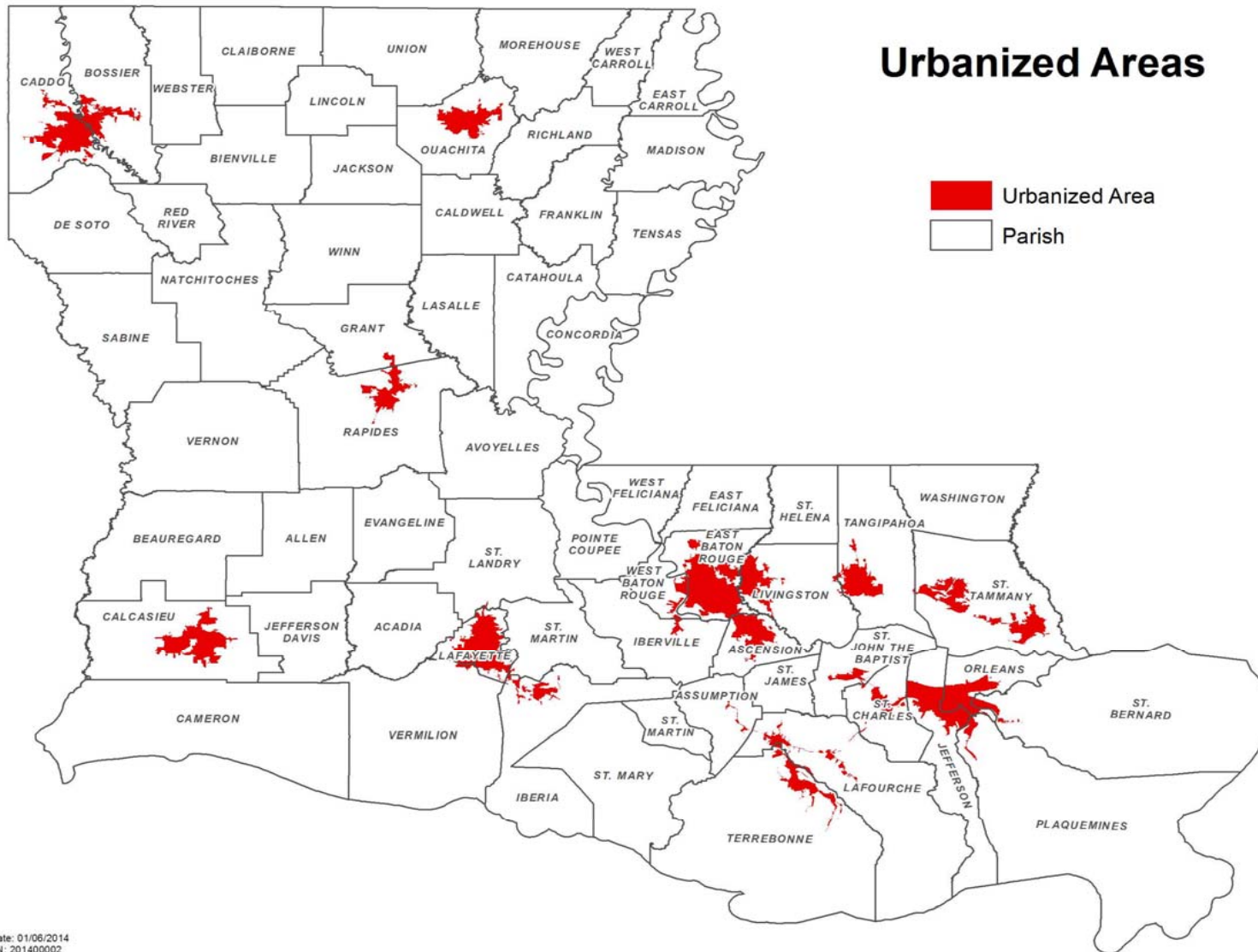


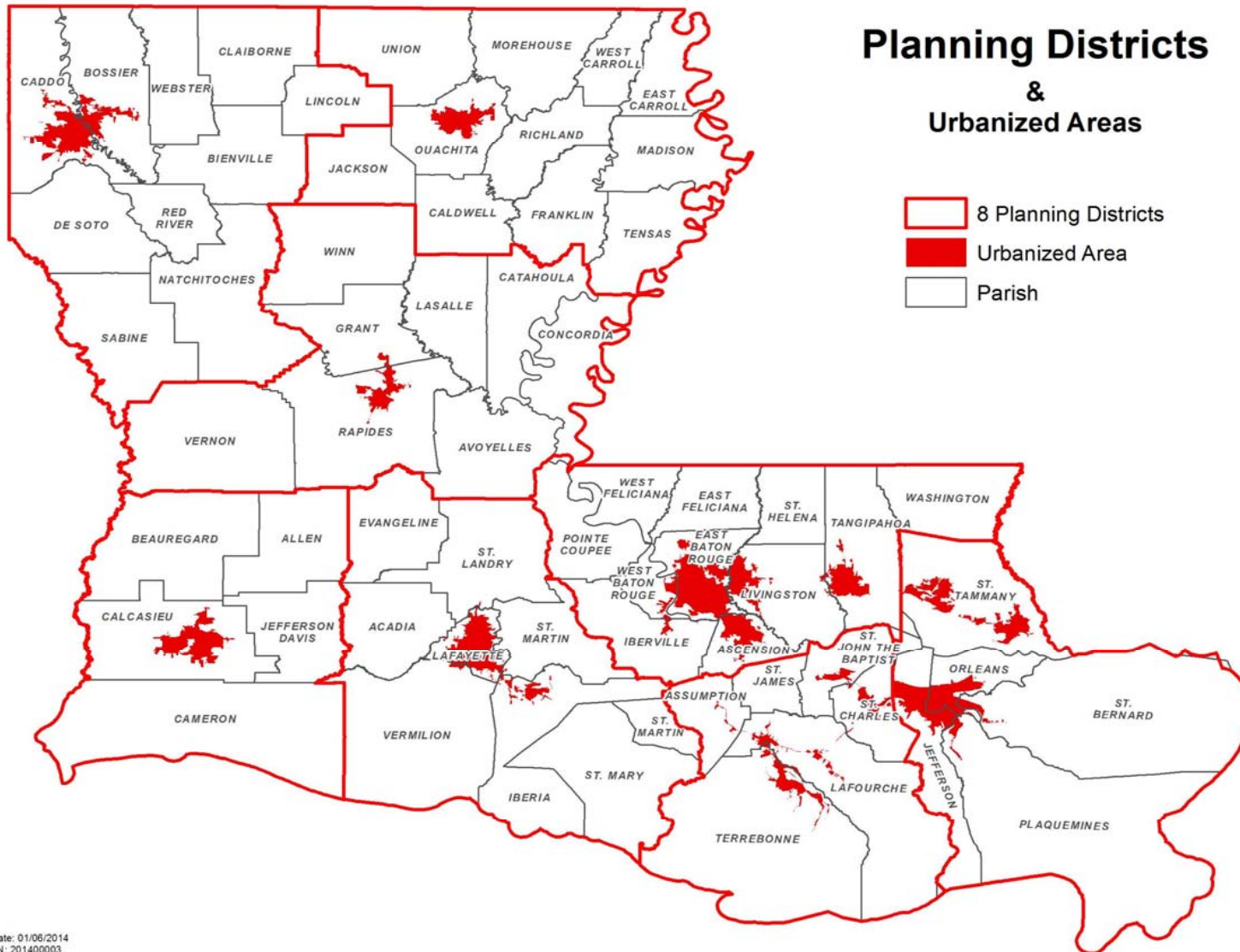
- How did you reach out to your local areas and how has that been working for you?
 - They are very diverse – some have more experience with AQ planning, some have less; some are heavily urbanized and others are not.

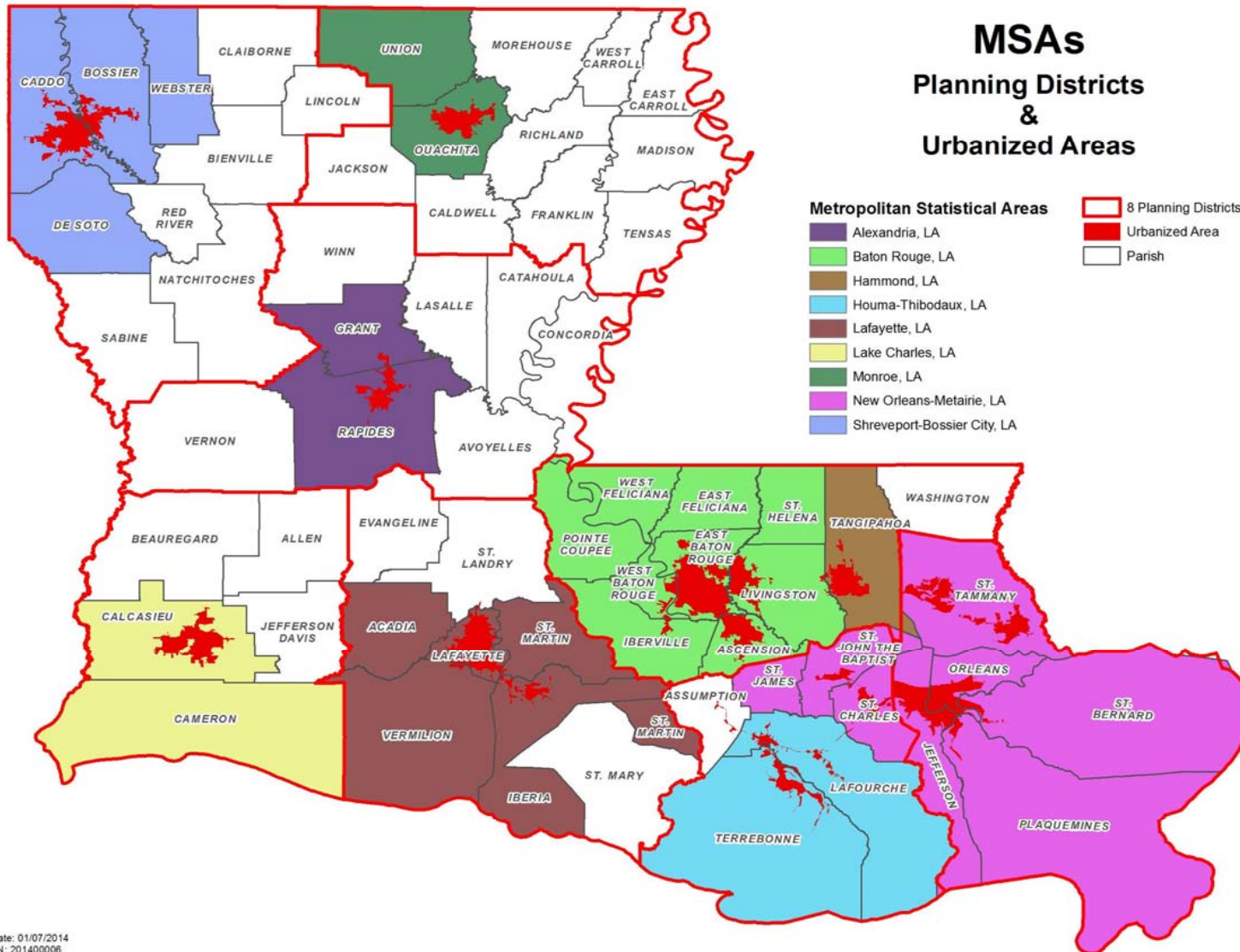


Too Many Jurisdictions

Parish Name	Planning District	Metropolitan Planning Organization (MPO)	Metropolitan Statistical Area	Combined Statistical Area	Air Quality Control Region
Acadia	Acadiana Economic & Planning District Council		Micropolitan Crowley 18940	318 Lafayette-Acadiana	Southern Louisiana-Southeast Texas Interstate AQCR
Allen	Imperial Calcasieu Regional Planning & Development Council	Imperial Calcasieu Regional Planning & Development Council			Southern Louisiana-Southeast Texas Interstate AQCR
Ascension	Capital Region Planning and Development Commission	Capital Region Planning and Development Commission	Baton Rouge MSA 12940	126 Baton Rouge-Pierre Part	Southern Louisiana-Southeast Texas Interstate AQCR
Assumption	South Central Planning and Development Commission	Houma Thibodaux Metropolitan Planning Organization	Micropolitan Pierre Part 38200	126 Baton Rouge-Pierre Part	Southern Louisiana-Southeast Texas Interstate AQCR
Avoyelles	Kisatchie-Delta Regional Planning & Development District				Shreveport-Texarkana-Tyler Interstate AQCR
Beauregard	Imperial Calcasieu Regional Planning & Development Council	Imperial Calcasieu Regional Planning & Development Council	Micropolitan DeRidder 19760	256 Fort Polk South-DeRidder	Southern Louisiana-Southeast Texas Interstate AQCR
Bienville	The Coordinating and Development Corporation				Shreveport-Texarkana-Tyler Interstate AQCR
Bossier	The Coordinating and Development Corporation	NLCOG - North Louisiana Council of Governments	Shreveport-Bossier City MSA 43340	508 Shreveport-Bossier City-Minden	Shreveport-Texarkana-Tyler Interstate AQCR
Caddo	The Coordinating and Development Corporation	NLCOG - North Louisiana Council of Governments	Shreveport-Bossier City MSA 43340	508 Shreveport-Bossier City-Minden	Shreveport-Texarkana-Tyler Interstate AQCR
Calcasieu	Imperial Calcasieu Regional Planning & Development Council	Imperial Calcasieu Regional Planning & Development Council	Lake Charles MSA 29340	324 Lake Charles-Jennings	Southern Louisiana-Southeast Texas Interstate AQCR
Caldwell	North Delta Regional Planning & Development District				Monroe-EI Dorado Interstate AQCR
Cameron	Imperial Calcasieu Regional Planning & Development Council	Imperial Calcasieu Regional Planning & Development Council	Lake Charles MSA 29340	324 Lake Charles-Jennings	Southern Louisiana-Southeast Texas Interstate AQCR
Catahoula	Kisatchie-Delta Regional Planning & Development District				Monroe-EI Dorado Interstate AQCR
Claiborne	The Coordinating and Development Corporation				Shreveport-Texarkana-Tyler Interstate AQCR
Concordia	Kisatchie-Delta Regional Planning & Development District		Micropolitan Natchez MS-LA 35020		Monroe-EI Dorado Interstate AQCR
DeSoto	The Coordinating and Development Corporation	NLCOG - North Louisiana Council of Governments	Shreveport-Bossier City MSA 43340	508 Shreveport-Bossier City-Minden	Shreveport-Texarkana-Tyler Interstate AQCR
East Baton Rouge	Capital Region Planning and Development Commission	Capital Region Planning and Development Commission	Baton Rouge MSA 12940	126 Baton Rouge-Pierre Part	Southern Louisiana-Southeast Texas Interstate AQCR
East Carroll	North Delta Regional Planning & Development District				Monroe-EI Dorado Interstate AQCR
East Feliciana	Capital Region Planning and Development Commission	Capital Region Planning and Development Commission	Baton Rouge MSA 12940	126 Baton Rouge-Pierre Part	Southern Louisiana-Southeast Texas Interstate AQCR
Evangeline	Acadiana Economic & Planning District Council				Southern Louisiana-Southeast Texas Interstate AQCR
Franklin	North Delta Regional Planning & Development District				Monroe-EI Dorado Interstate AQCR
Grant	Kisatchie-Delta Regional Planning & Development District		Alexandria MSA 10780		Monroe-EI Dorado Interstate AQCR
Iberia	Acadiana Economic & Planning District Council		Micropolitan New Iberia 35340	318 Lafayette-Acadiana	Southern Louisiana-Southeast Texas Interstate AQCR
Iberville	Capital Region Planning and Development Commission	Capital Region Planning and Development Commission	Baton Rouge MSA 12940	126 Baton Rouge-Pierre Part	Southern Louisiana-Southeast Texas Interstate AQCR
Jackson	North Delta Regional Planning & Development District				Shreveport-Texarkana-Tyler Interstate AQCR
Jefferson	Regional Planning Commission	Regional Planning Commission	New Orleans - Metairie - Kenner MSA 35380	406 New Orleans-Metairie-Bogalusa	Southern Louisiana-Southeast Texas Interstate AQCR
Jefferson Davis	Imperial Calcasieu Regional Planning & Development Council	Imperial Calcasieu Regional Planning & Development Council	Micropolitan Jennings 27660	324 Lake Charles-Jennings	Southern Louisiana-Southeast Texas Interstate AQCR
Lafayette	Acadiana Economic & Planning District Council	Lafayette Consolidated Government	Lafayette MSA 29140	318 Lafayette-Acadiana	Southern Louisiana-Southeast Texas Interstate AQCR
Lafourche	South Central Planning and Development Commission	Houma Thibodaux Metropolitan Planning Organization	Houma-Bayou Cane - Thibodaux MSA 26380		Southern Louisiana-Southeast Texas Interstate AQCR
LaSalle	Kisatchie-Delta Regional Planning & Development District				Monroe-EI Dorado Interstate AQCR
Lincoln	The Coordinating and Development Corporation		Micropolitan Ruston 40820		Shreveport-Texarkana-Tyler Interstate AQCR
Livingston	Capital Region Planning and Development Commission	Capital Region Planning and Development Commission	Baton Rouge MSA 12940	126 Baton Rouge-Pierre Part	Southern Louisiana-Southeast Texas Interstate AQCR
Madison	North Delta Regional Planning & Development District		Micropolitan Tallulah 45260		Monroe-EI Dorado Interstate AQCR
Morehouse	North Delta Regional Planning & Development District		Micropolitan Bastrop 12820	384 Monroe-Bastrop	Monroe-EI Dorado Interstate AQCR
Natchitoches	The Coordinating and Development Corporation		Micropolitan Natchitoches 35060		Shreveport-Texarkana-Tyler Interstate AQCR
Orleans	Regional Planning Commission	Regional Planning Commission	New Orleans - Metairie - Kenner MSA 35380	406 New Orleans-Metairie-Bogalusa	Southern Louisiana-Southeast Texas Interstate AQCR
Quachita	North Delta Regional Planning & Development District		Monroe MSA 33740	384 Monroe-Bastrop	Monroe-EI Dorado Interstate AQCR
Plaquemines	Regional Planning Commission	Regional Planning Commission	New Orleans - Metairie - Kenner MSA 35380	406 New Orleans-Metairie-Bogalusa	Southern Louisiana-Southeast Texas Interstate AQCR
Pointe Coupee	Capital Region Planning and Development Commission	Capital Region Planning and Development Commission	Baton Rouge MSA 12940	126 Baton Rouge-Pierre Part	Southern Louisiana-Southeast Texas Interstate AQCR
Rapides	Kisatchie-Delta Regional Planning & Development District	Rapides Area Planning Commission	Alexandria MSA		Shreveport-Texarkana-Tyler Interstate AQCR
Red River	The Coordinating and Development Corporation				Shreveport-Texarkana-Tyler Interstate AQCR
Richland	North Delta Regional Planning & Development District				Monroe-EI Dorado Interstate AQCR
Sabine	The Coordinating and Development Corporation				Shreveport-Texarkana-Tyler Interstate AQCR
St. Bernard	Regional Planning Commission	Regional Planning Commission	New Orleans - Metairie - Kenner MSA 35380	406 New Orleans-Metairie-Bogalusa	Southern Louisiana-Southeast Texas Interstate AQCR
St. Charles	South Central Planning and Development Commission		New Orleans - Metairie - Kenner MSA 35380	406 New Orleans-Metairie-Bogalusa	Southern Louisiana-Southeast Texas Interstate AQCR
St. Helena	Capital Region Planning and Development Commission	Capital Region Planning and Development Commission	Baton Rouge MSA 12940	126 Baton Rouge-Pierre Part	Southern Louisiana-Southeast Texas Interstate AQCR
St. James	South Central Planning and Development Commission				Southern Louisiana-Southeast Texas Interstate AQCR
St. John	South Central Planning and Development Commission				Southern Louisiana-Southeast Texas Interstate AQCR
St. Landry	Acadiana Economic & Planning District Council		New Orleans - Metairie - Kenner MSA 35380	406 New Orleans-Metairie-Bogalusa	Southern Louisiana-Southeast Texas Interstate AQCR
St. Martin	Acadiana Economic & Planning District Council		Micropolitan Opelousas-Eunice 36660	318 Lafayette-Acadiana	Southern Louisiana-Southeast Texas Interstate AQCR
St. Mary	Acadiana Economic & Planning District Council		Lafayette MSA 29140	318 Lafayette-Acadiana	Southern Louisiana-Southeast Texas Interstate AQCR
St. Tammany	Regional Planning Commission	Regional Planning Commission	Micropolitan Morgan City 34020		Southern Louisiana-Southeast Texas Interstate AQCR
Texas	Capital Region Planning and Development Commission	Capital Region Planning and Development Commission	New Orleans - Metairie - Kenner MSA 35380	406 New Orleans-Metairie-Bogalusa	Southern Louisiana-Southeast Texas Interstate AQCR







- What specific things has LA DEQ done to support the local areas in this effort?

State Program Goals

- Get local Air Quality Task Forces/Coalitions established
- Build a support network across the state
- Education and Awareness
- Keep areas in attainment!

Getting Started

- Created standard Presentations
 - How ozone forms, how EPA sets standards, design value and classification, schedules
 - Historical and current design value graphs
 - All about nonattainment
 - Economic impacts on consumers, business, industry
 - Transportation and General Conformity
 - Advance Program benefits, responsibilities

Keeping it Simple

- Presentation length about 45 minutes
 - Sometimes you only get 5 or 10 on an agenda
- Stay away from “government speak”
 - Exceptions included “design value”, “designation” and “classification”
- Stress the potential benefits
- Simple Graphs, charts, images were helpful

Standard Presentation

- We developed one template, just changed out the regional inventory and design value charts
- Ozone basics
 - What it is, how EPA regulates it, why the concern
- Economic impacts on the community
- Why be proactive
- How to use Advance Program

Group Activities

- November 2012 presentation by ENVIRON regarding the status of attainment demonstration modeling efforts
- February 2013 participant workshop
- Air Quality Awareness Month – May 2013
- July 2013 participant call

Air Quality Awareness

- In conjunction with National Clean Air Month, in LA we have Air Quality Awareness Month
- In April and early May
 - 8 radio interviews (one hits over 60 stations)
 - 8 live television interviews
 - 3 newspaper interviews
- Also a DEQ press release and a short press conference.

Takeaway Items

- 1ppb of ozone in the air is equivalent to 1 drop of water in an Olympic size pool
- The EPA standard is like a limbo bar...the lower it goes, the harder it is to get under it!
- Ozone nonattainment is like Hotel California – you're forced to check in, but you can (almost) never get out!
- You are in charge of your own destiny

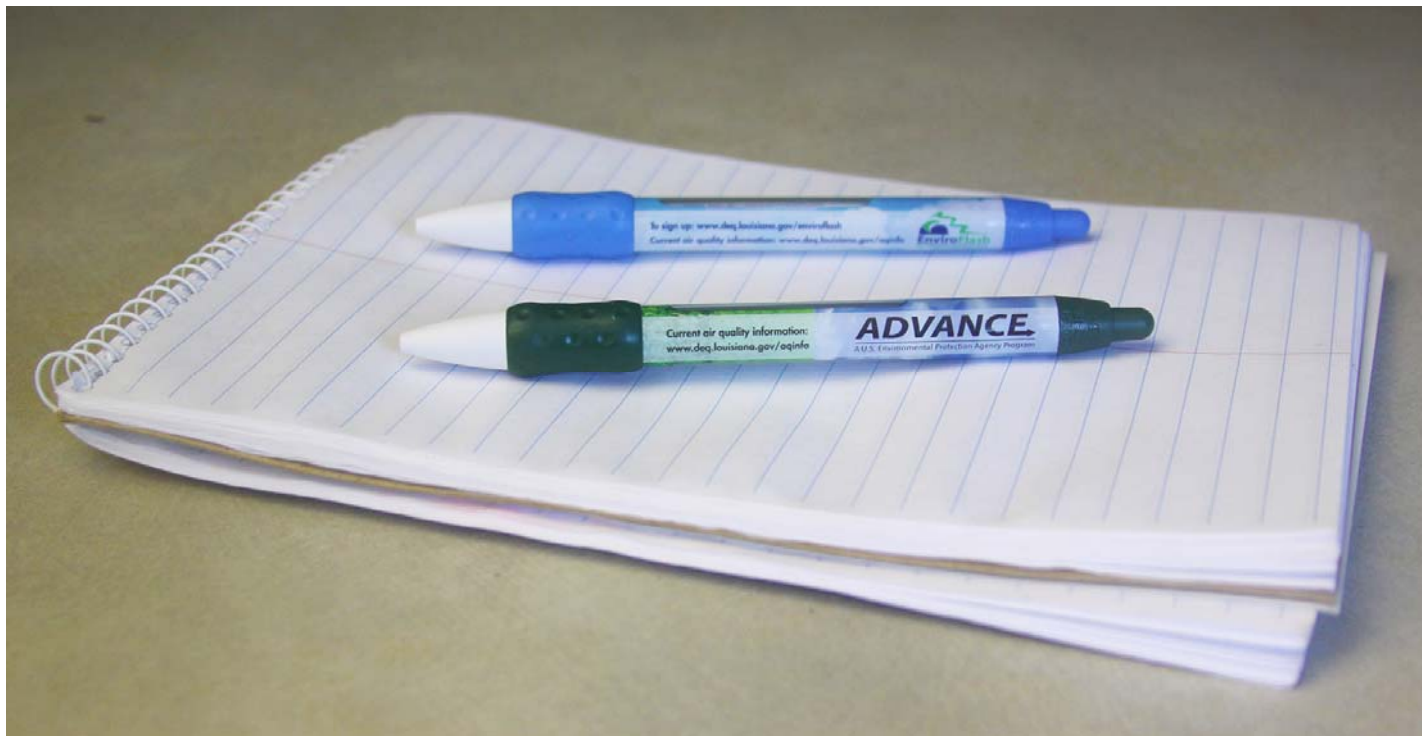
Talking the Talk, Walking the Walk

- Since June 2012 (24 months):
 - Lake Charles (3)
 - Shreveport (3)
 - New Orleans (5)
 - Lafourche-Terrebonne (7)
 - Baton Rouge (2)
 - and Lafayette (3).
- Other major metro areas Monroe (1) and Alexandria

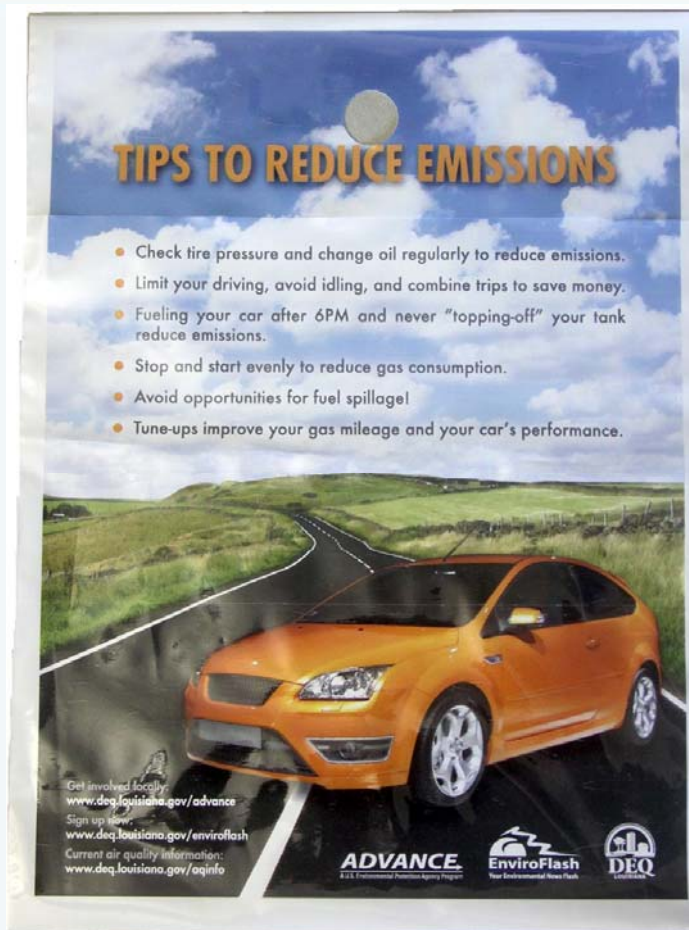
Promotional Items

- Found some Beneficial Environmental Project monies
 - Radio spots
 - Giveaway items at meetings, festivals
 - Development of high school science educational program thru Public Broadcasting

Advance and Enviroflash Pens



Vehicle Litterbags



TIPS TO REDUCE EMISSIONS

- Check tire pressure and change oil regularly to reduce emissions.
- Limit your driving, avoid idling, and combine trips to save money.
- Fueling your car after 6PM and never "topping-off" your tank reduce emissions.
- Stop and start evenly to reduce gas consumption.
- Avoid opportunities for fuel spillage!
- Tune-ups improve your gas mileage and your car's performance.

Get involved locally:
www.deq.louisiana.gov/advance
 Sign up here:
www.deq.louisiana.gov/enviroflash
 Current air quality information:
www.deq.louisiana.gov/airinfo

ADVANCE
 U.S. Environmental Protection Agency Program

EnviroFlash
 Your Environmental News Flash

DEQ
 LOUISIANA

Memo Board

NOTES

AIR QUALITY INDEX FOR OZONE AND PM_{2.5}

Category	Index	Ozone 2008 8-Hr Limit	PM _{2.5} 24-Hr PM ₁₀ Limit	Suggested Precautions
Good	0 - 50	0.000 - 0.059	0 - 12	None
Moderate	51 - 100	0.060 - 0.075	12.1 - 35.4	Sensitive People Limit Prolonged Outdoor Exercise
Unhealthy for Sensitive Groups	101 - 150	0.076 - 0.095	35.5 - 55.4	Sensitive People & Children Limit Prolonged Outdoor Exercise
Unhealthy	151 - 200	0.096 - 0.115	55.5 - 150.4	Everyone Limit Prolonged Outdoor Exercise

EVERYDAY TIPS:

- Checking tire pressure and changing oil regularly reduce your car's emissions.
- Limit your driving, avoid idling, and combine your trips to save money & improve air quality.
- Reduce emissions by fueling your car after 6PM when possible and never "topping-off" your tank.
- Conserving energy at home means fewer power plant emissions!

Get involved locally: www.deq.louisiana.gov/advance
 Sign up now: www.deq.louisiana.gov/enviroflash
 Current air quality information: www.deq.louisiana.gov/oqinfo

ADVANCE  

- What has your experience in the program been like? Have the local areas in Louisiana found it to be useful?

Are we making progress?

- YES! And the progress is POSITIVE!
 - Increased local involvement
 - Improved understanding of air quality
 - More communication!
 - More press coverage
 - Broader audience

Keys to Success

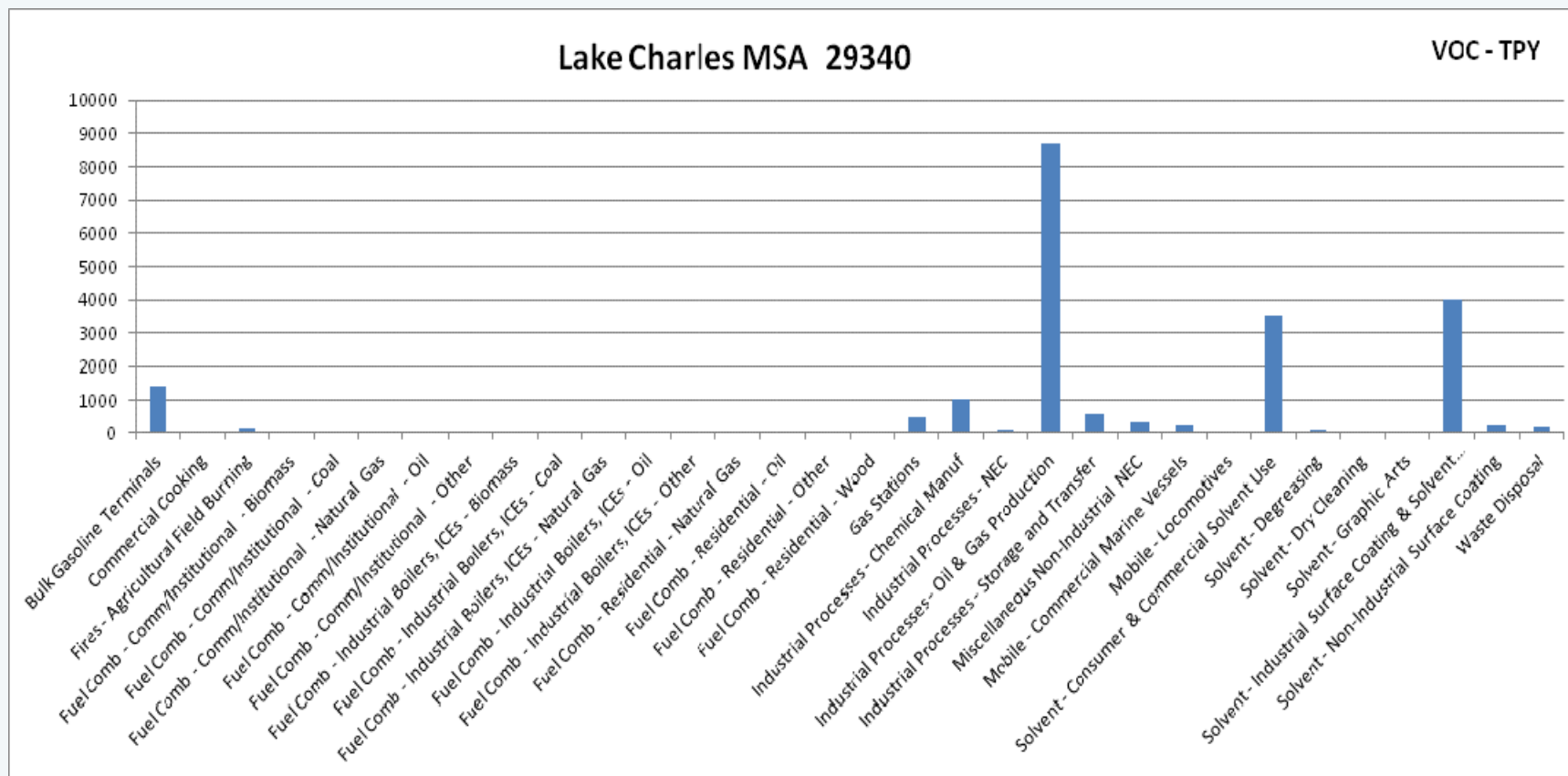
- Local air quality task forces remain successful because the entities work well together
 - Volunteer organizations like Clean Cities
 - Local Transportation Commission (MPO)
 - Ozone Task Force (industrial partners)
 - DEQ
- There is synergy created on projects
- Good portal for public input

- What specific projects are you planning to do next to support your local areas?

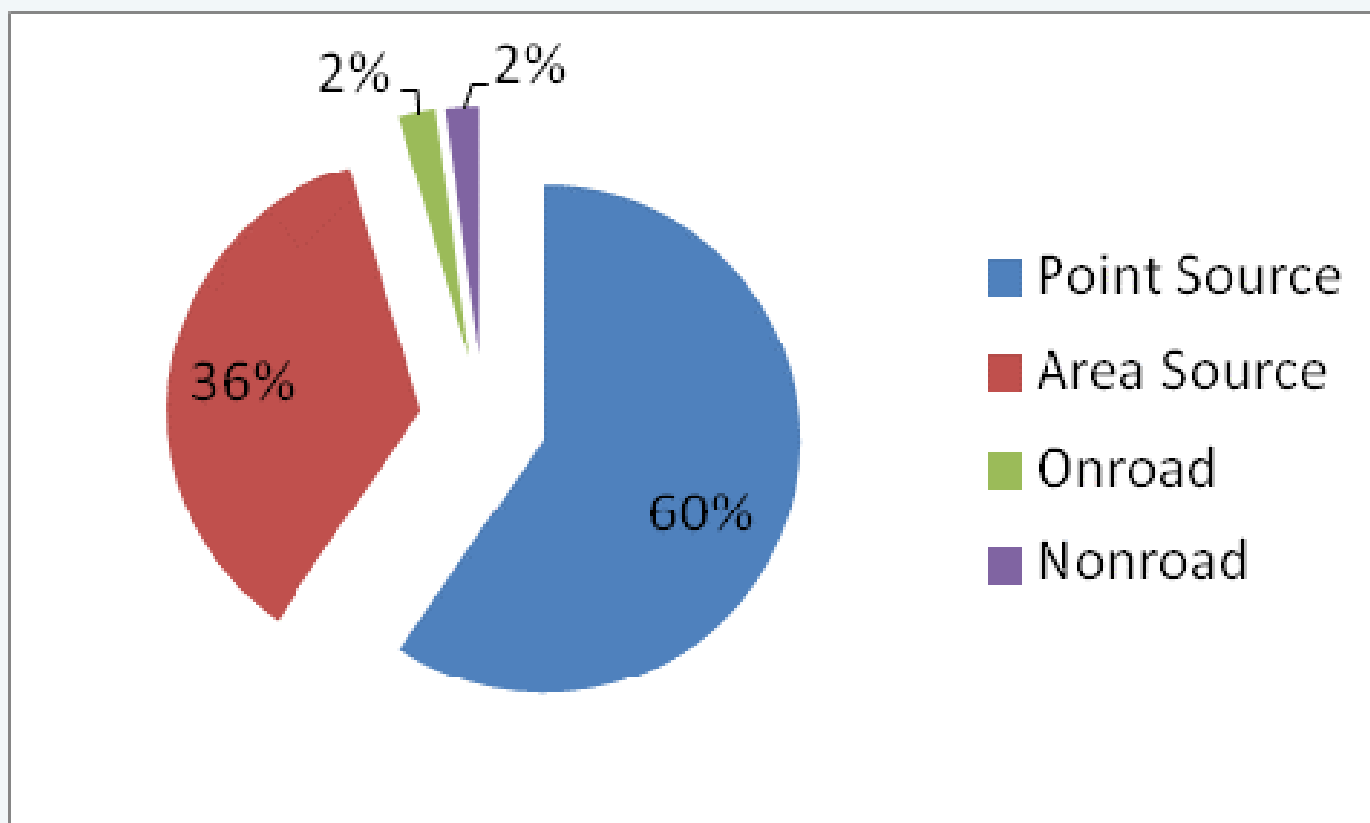
Areas Need to Keep Learning!

- What reductions will keep us in attainment?
 - Focus on reductions that get you the most good
 - What are the sources of those emissions
 - What kind of projects will achieve those reductions
 - At the lowest per/ton cost
 - Is there any funding for that?
- State and EPA can help a lot with this by providing data and helping explain what it means

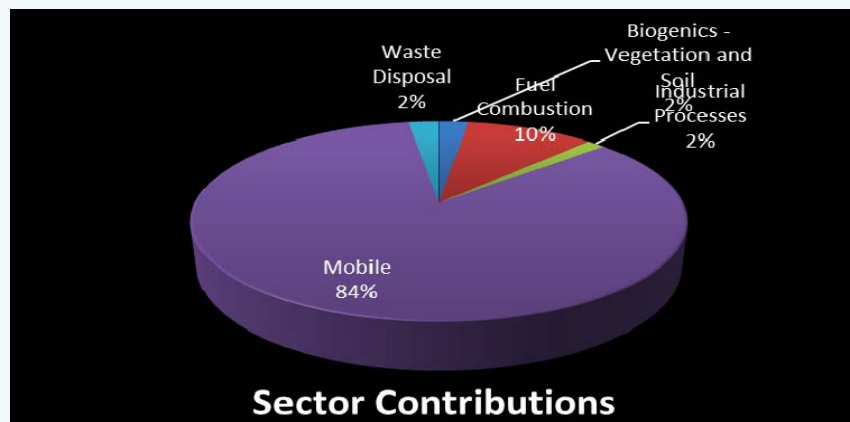
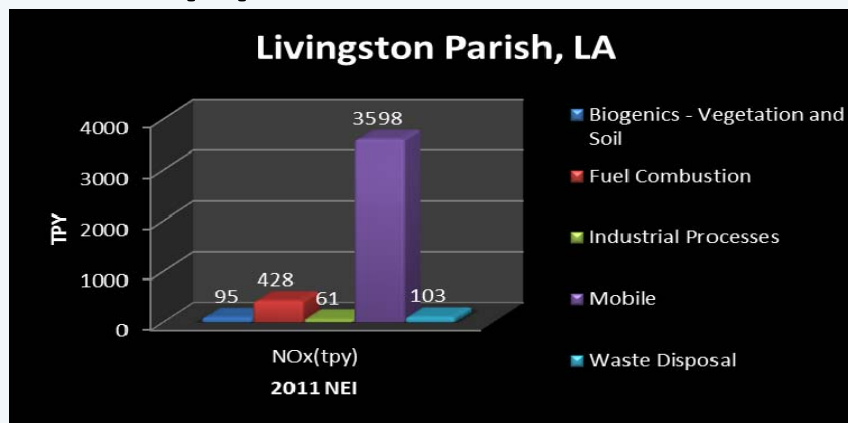
Lake Charles Area Source VOC



Lake Charles PM_{2.5}



EPA Supplied Information



What we are thinking...

- Having industry fund private projects to bank emission reduction credits (in nonattainment area)
- Meetings with several areas to help them kick start expanded efforts
- Conformity training for MPO staff
 - Federal Coordination – FHWA- DOE – EPA and others
- Continue the awareness/education campaign through local media
- More Regional and National communication – Thru CenSARA and other MJOs and EPA

- What are some interesting examples of measures the Louisiana areas are implementing now?

Outcomes

- Each local area is different
 - Past experience with air quality issues
 - Organization of a local group
- Now, about 24 months into the program
 - What are some highlights?

Highlights

- One Local Area has the Advance Program on the agenda for all MPO Policy and other committee meetings.
 - They are developing a short (4 to 5 slide) presentation to be used at all meetings – the approach is to keep repeating the message.
 - They will include air quality issues and mitigation in the new regional Master Transportation Plan the MPO is starting to develop.

Highlights

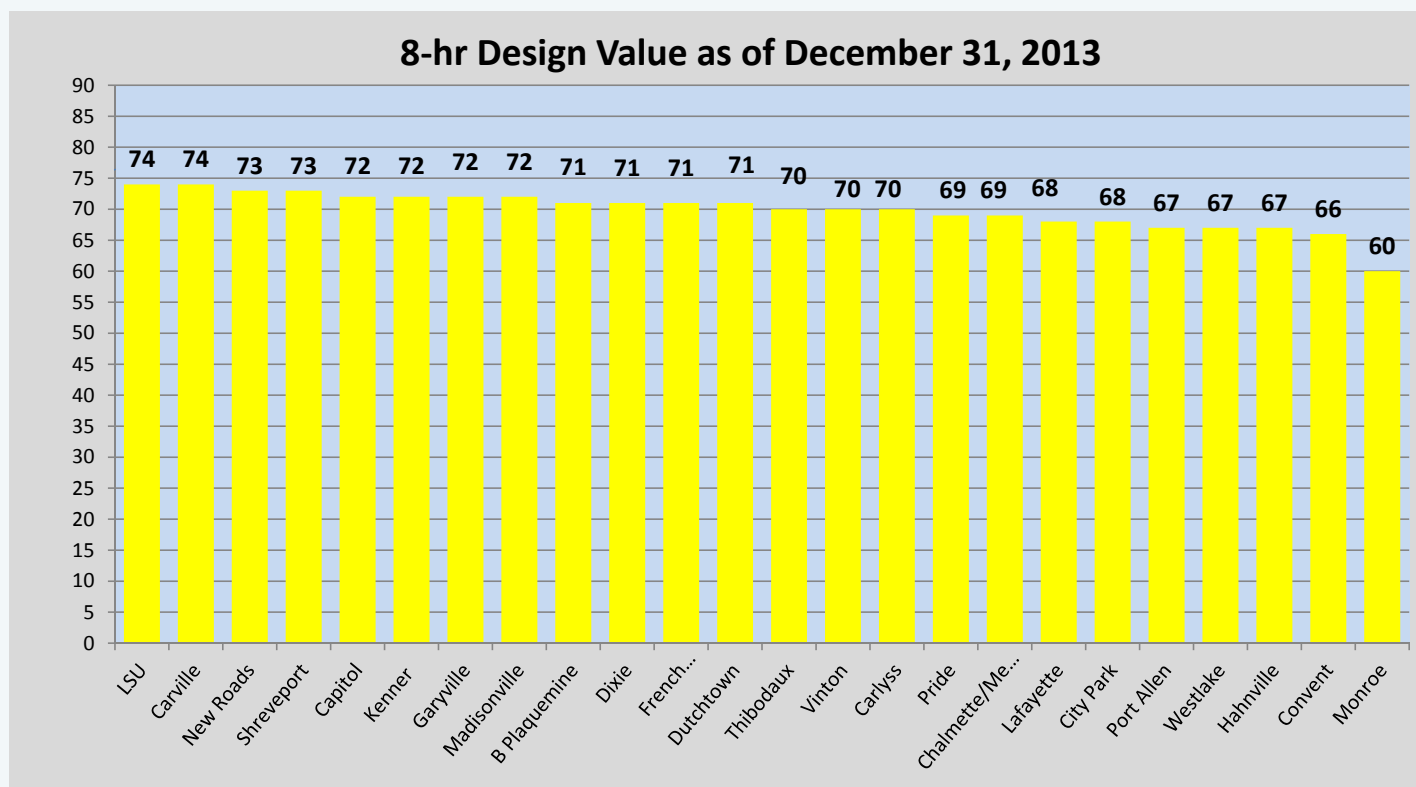
- As a result of Ozone Advance, several local industries committed to implementing voluntary measures to reduce ozone-causing emissions.
 - One example--last summer the power plant began voluntarily running a "selective non-catalytic reduction system" when ozone action days are declared, for the purpose of reducing NOx emissions.
 - The program also prompted a media campaign to educate the public on the issue and steps to take to reduce ozone-causing emissions.
- In order for the entire MSA to participate in the Advance program, they brought officials with all local governing bodies up to speed and obtained their commitment to participate and become more knowledgeable.
- They held a community event last April to educate local business, industry and community leaders on the importance of being proactive in maintaining good air quality.

Other Examples

- One area has created an Air Quality Task Force to work closely with the Planning District
 - The Chamber of Commerce Environmental Affairs Committee has as one of its main goals, ozone awareness and improving air quality in the area
 - The Environmental Committee is also sponsoring a poster contest in the Local Science and Engineering Fair. One of the four topics that can be addressed in the poster contest is ground level ozone. The Fair includes students in grades 4 – 12 in 60 schools in a 6 county area.
- Key leaders from the planning district, the Chamber, the local parishes/counties and municipalities, the local Harbor and Terminal District, the School Board, and the Industry Alliance have come to the table at various meetings. Many have already implemented programs within their organizations.

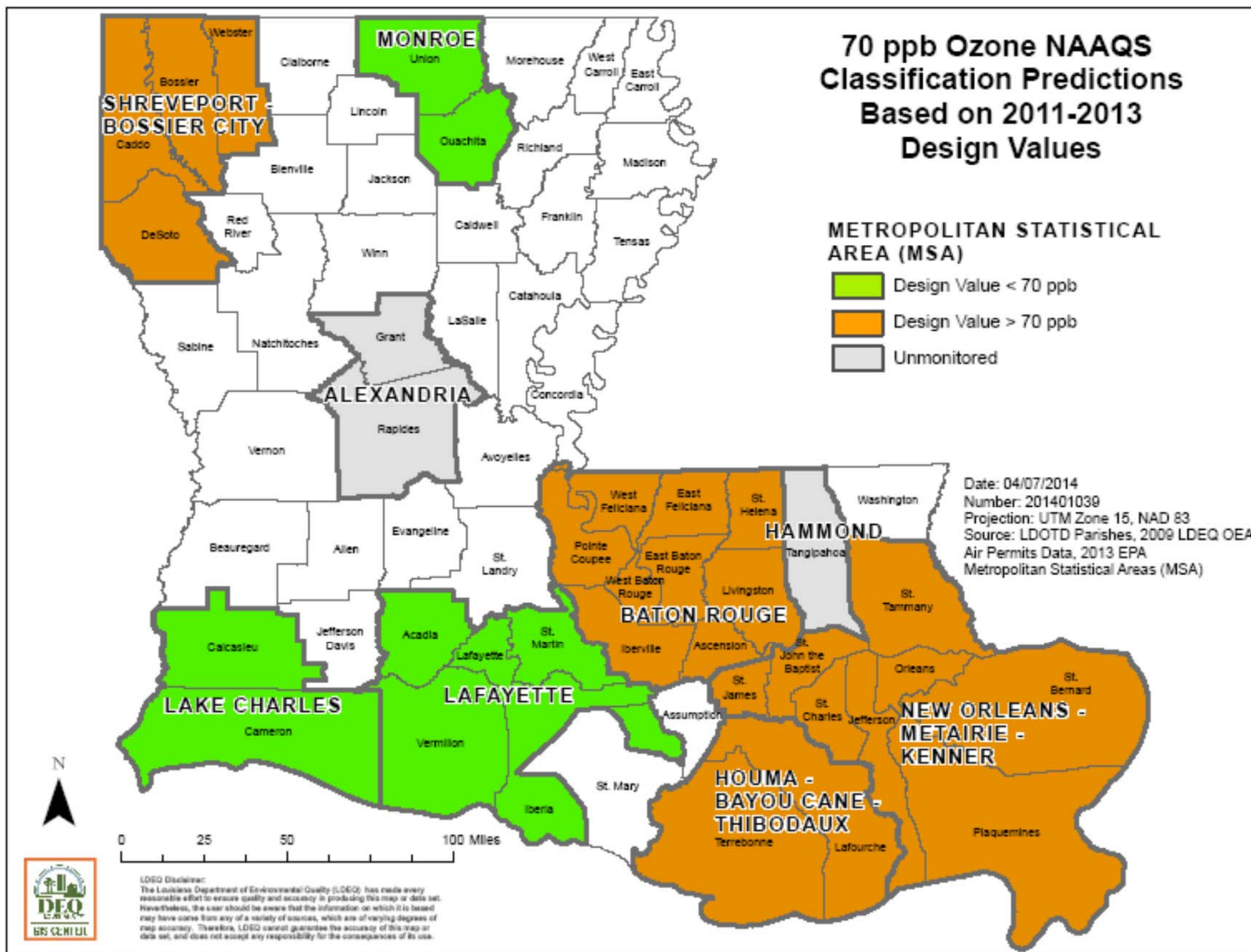
What's the rush?

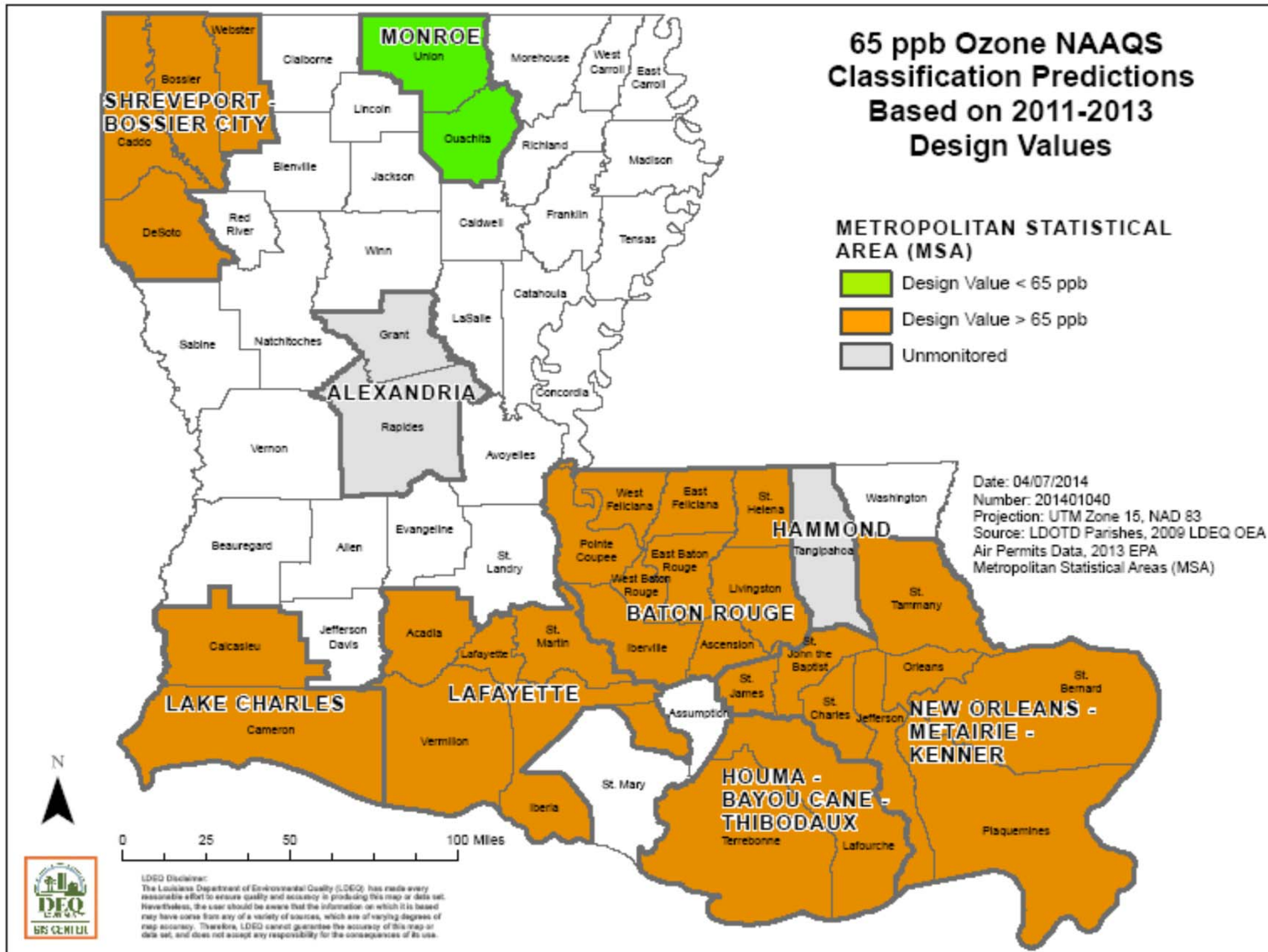
2011- 2013 Was a Good Period



Policy Assessment for the Review of the Ozone National Ambient Air Quality Standards
Second External Review Draft – January 2014

- “It is appropriate to consider a standard level within the range of 70 ppb to 60 ppb, reflecting our judgment that a standard set within this range could provide an appropriate degree of public health protection and would result in important improvements in protecting the health of at-risk populations and lifestyles.”





For More Information

LDEQ Advance Website – examples of presentation materials:

- <http://www.deq.louisiana.gov/portal/DIVISIONS/AirPermitsEngineeringandPlanning/NationalAmbientAirQualityStandards/Ozone/AdvanceProgram.aspx>
- Baton Rouge Clean Air Coalition www.brcleanair.com



Questions?

Advance Program Website

www.epa.gov/ozonepadvance/

Laura Bunte

Advance Program Lead

U.S. EPA, Office of Air Quality Planning and Standards
(919) 541-0889; advance@epa.gov

Michael Vince

Louisiana Dept. of Environmental Quality
Air Permits Division

michael.vince@la.gov

Thank you for your time and attention!