



POMPTON LAKES WORKS SITE PUBLIC AVAILABILITY SESSION

APRIL 28, 2016





AGENDA

- Pompton Lake Study Area Dredging/Removal Overview
- Community Concerns
 - ✓ Traffic
 - ✓ Security
 - ✓ Odor Monitoring/Control
 - ✓ Noise Monitoring/Control
 - ✓ Air Monitoring/Dust Control
 - ✓ Proximity to School/Residents Along Lakeside Avenue
- Monitoring Reporting
- EPA Oversight of Construction Activities
- Anticipated Schedule



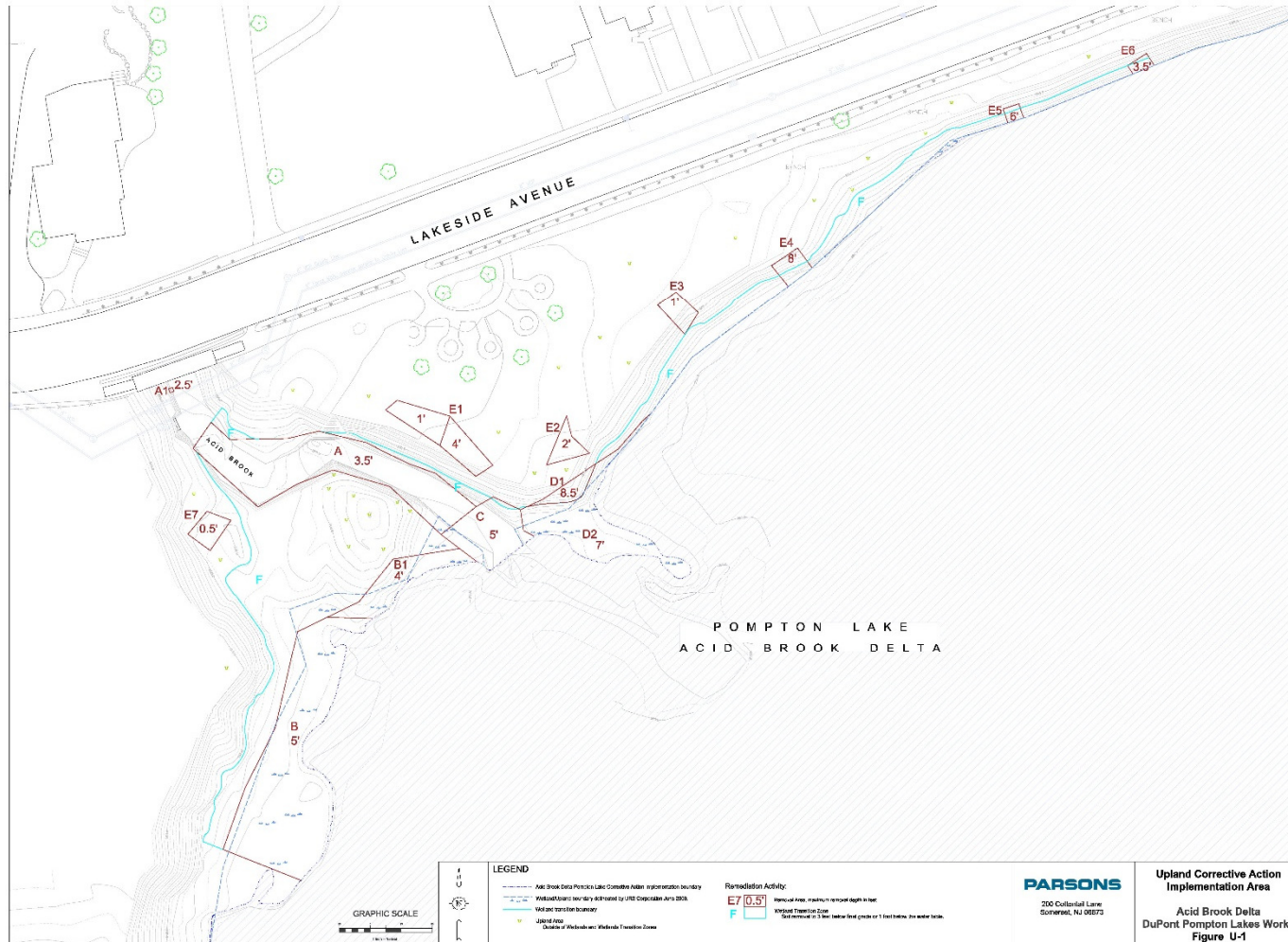
“DREDGING” PROJECT OVERVIEW

- Pompton Lake Study Area
 - Acid Brook Delta (ABD) Sediments - Approx. 36 Acres
 - Pompton Lake Sediments - Lakeside Ave. Bridge to Pompton Lake Dam
 - ✓ Area A - Approx. 0.5 Acres
 - ✓ Island Area - Approx. 2.5 Acres

- ABD Upland Soil Areas
 - Upland Soil Areas Outside Wetland/Wetland Transition Zone
 - Areas Within Wetland/Wetland Transition Zone
 - Removal From 16 Delineated Areas With Depths Ranging from 0.5 to 9 ft. Below Ground Surface
 - Estimated Removal Volume is 3,160 CY



ABD UPLAND SOIL REMOVAL AREAS





REMEDIATION PROJECT SUMMARY

- Corrective Measures Implementation Work Plan Prepared by Chemours Reviewed/Approved by EPA/NJDEP
- Remedial Approach for Sediment is Hydraulic and Mechanical Dredging and Restoration
- Remedial Approach for ABD Upland Soil Areas is Conventional Excavation and Restoration
- Dredged Sediment/Removed Soil Will be Disposed Off-site
- Field Oversight by EPA and/or NJDEP



“DREDGING” PLANNING DOCUMENTS

➤ Corrective Measures Implementation Work Plan (CMI WP)

http://www3.epa.gov/region02/waste/dupont_pompton/additionaldocs.html

- Dredging/Removal Methods
- Materials Handling/Transportation
- Disposal of Sediment/Soil
- Restoration Details
- Health & Safety Plan/Quality Assurance Plan/Reporting
- Permitting and Other Approvals
- Project Schedule and Management

➤ Remediation & Restoration Plan Within Appendix A Project Operations Plan



COMMUNITY CONSIDERATIONS -TRAFFIC CONTROL

- Traffic Control Plan Developed With Input From Community/Local (Pompton Lakes Police Dept./Borough Engineer)/County (Passaic County Engineering Dept.) Officials
- Work Hours
 - ✓ M-F Set-Up 7AM-8AM/Work 8AM-6PM/Clean-Up 6PM-7PM
 - ✓ Saturday Hours - “Make-Up” Production Day If Needed/Same Working Hours as Weekdays
 - ✓ Advance Notification to the Extent Practicable for Saturday Work
- Trucking Restrictions
 - ✓ School Opening/Closing - Construction-Related Traffic Will be Prohibited
 - ✓ Restricted Times - 7:45AM - 8:30AM and 2:30PM - 3:15PM
 - ✓ 5 MPH Speed Limit Enforced Within Work Site
 - ✓ Flagmen Utilized to Control Entry/Exit to the Work Site



COMMUNITY CONSIDERATIONS -TRAFFIC CONTROL

- **Parking**
 - ✓ Shuttle Bus Workers From Pompton Lakes Work Site on Cannonball Road
 - ✓ Limited Parking at Rotary Park for Project Personnel
 - ✓ Service Vehicles (e.g. Landscapers) for Lakeside Avenue Residents Between Work Area & Lakeside Avenue Bridge Will be Unable to Park on Lakeside Avenue

- **Heavy Vehicle Dispatch**
 - ✓ Trucks Staged Outside Borough & Dispatched as Needed Minimizing Idling and Traffic Build-up
 - ✓ Only a Few Trucks On-site at a Time Due to Limited Size of Work Space

- **Emergency Vehicles**
 - ✓ No Full Road Closure of Lakeside Avenue Except For Brief Times to Allow Entrance/Exit of Large Trucks/Equipment Aided by Flagmen
 - ✓ Single Lane Closure of Lakeside Avenue Allows for Emergency Vehicle Passage



COMMUNITY CONSIDERATIONS -TRAFFIC CONTROL

- Signage
 - ✓ Impact to Pedestrian Traffic Due to Fence Installation Proximate to Sidewalk
 - ✓ Signage For Duration of Construction - Shrouded When Not in Use
 - ✓ Advance Signs Placed on Both Sides of Closed Section of Sidewalk on South Side of Lakeside Avenue
 - ✓ Guide Signs to Direct Pedestrians Around Work Area
 - ✓ Service Vehicles (e.g. Landscapers) for Lakeside Avenue Residents Between Work Area & the Lakeside Avenue Bridge Will be Unable to Park on Lakeside Avenue
 - ✓ Pompton Lakes Police Dept. to be Dispatched to Direct Traffic at Either End of Lakeside Avenue During Lane Closure



TRAFFIC SIGNAGE LAYOUT

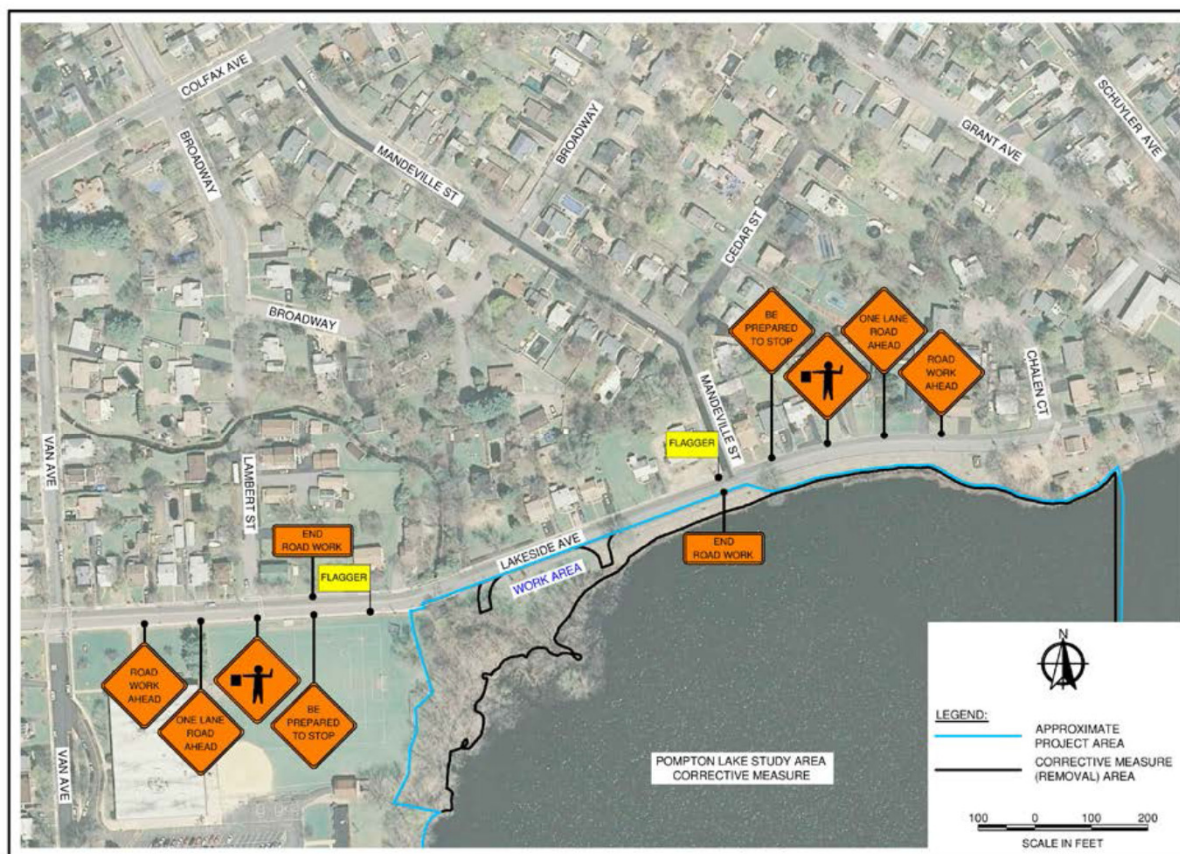


Figure 4. Sign Layout Map
2 Lanes, Undivided, Lane Closing with Flagging



COMMUNITY CONSIDERATIONS -TRAFFIC CONTROL

Pedestrian Route Along Lakeside Avenue

- Primary Route
 - Cross Lakeside Avenue at Mandeville Street
 - Continue Along Northern Side of Lakeside Avenue Using Existing Sidewalk

- Alternate Route
 - Cross Lakeside Avenue at Mandeville Street
 - Continue North/Northwest on Mandeville Street to Broadway
 - Continue West/Northwest on Broadway to Van Avenue
 - Continue South on Van Avenue to Lakeside Avenue



PEDESTRIAN ROUTE

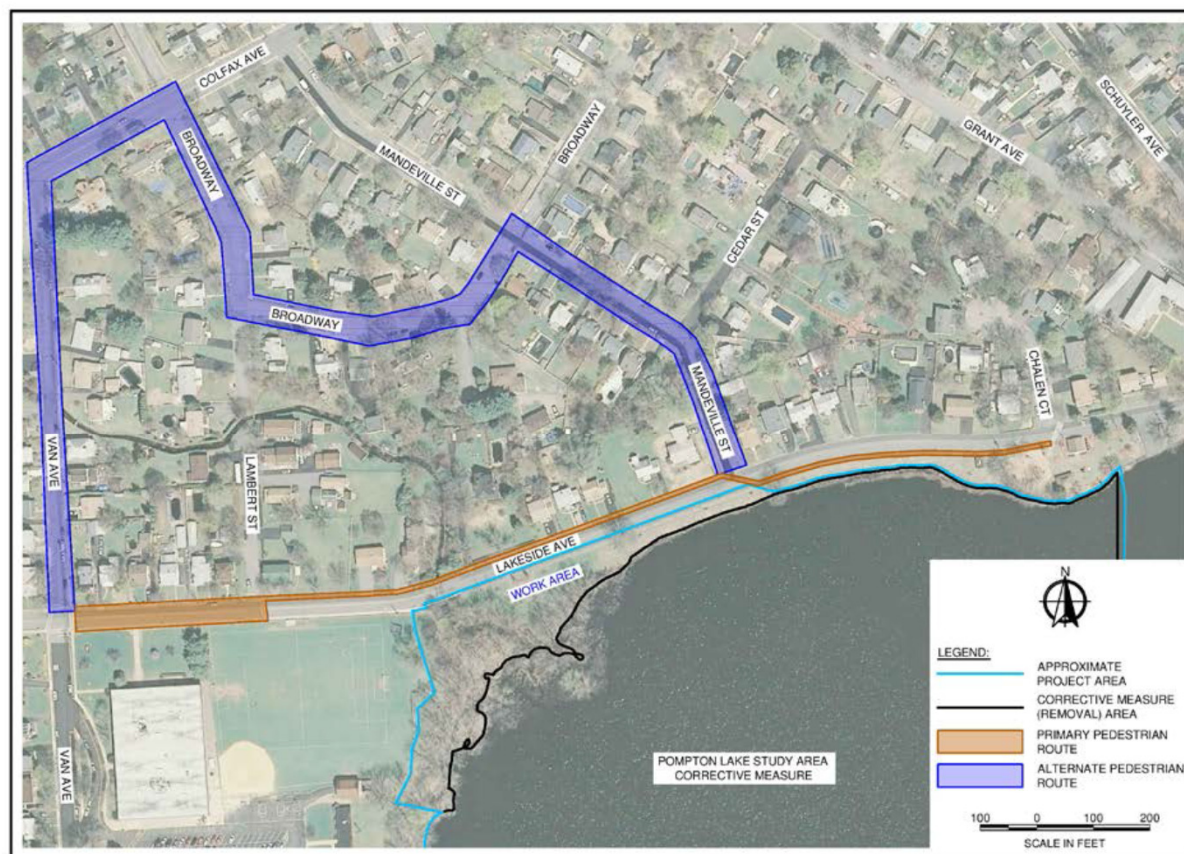


Figure 2. Primary and Alternate Pedestrian Route



COMMUNITY CONSIDERATIONS -TRAFFIC CONTROL

- Haul Route: Delivery of Materials/Equipment/Clean Fill & Removal of Contaminated Sediment/Soil
- Outbound Route (Inbound Route is Reverse)
 - East on Lakeside Avenue to the Stop at the Bridge
 - East on Lakeside Avenue Over the Bridge to Terhune Avenue (Route 202)
 - South on Terhune Avenue (Route 202) to Paterson-Hamburg Turnpike
 - North on Paterson-Hamburg Turnpike
 - West on Paterson-Hamburg Turnpike to I-287 Interchange 53
- Coordination With Pompton Lakes/Wayne Police Departments Regarding Lakeside Avenue/Terhune Drive Intersection Due to Grade of Road/Heavy Traffic



HAUL ROUTE

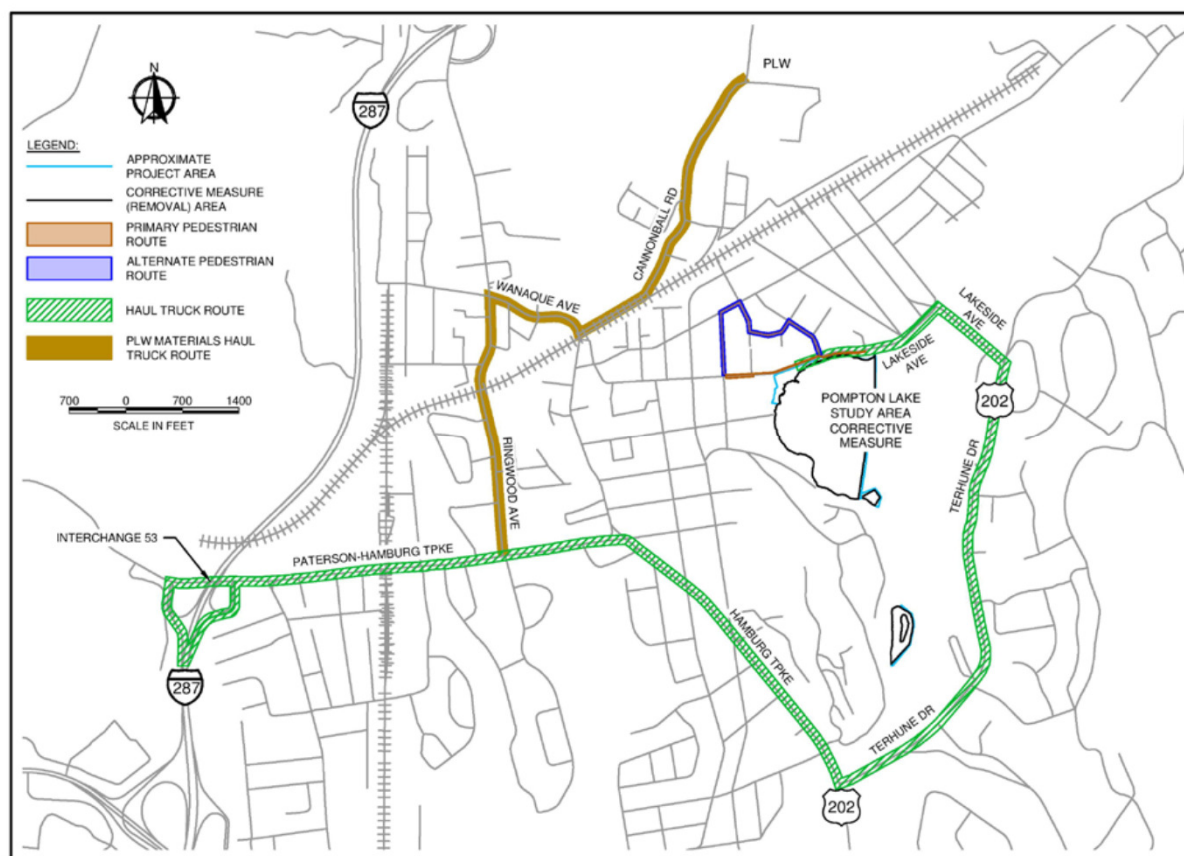


Figure 7. Haul Truck, PLW Materials Truck Route, and Pedestrian Routes



COMMUNITY CONSIDERATIONS - SITE SECURITY

- Temporary Fencing With Areas That Have Visual Barriers
- Signage Indicating Site Access is Restricted (e.g. No Trespassing)
- Photographic Surveillance
- Contractor Personnel Designated with Site Security Responsibility During Working Hours
- Private Security Firm Providing Coverage During Non-Working Hours Including Nights & Weekends
- Pompton Lakes Police Patrols of the Area at Night/on Weekends as Part of Their Routine Activities



COMMUNITY CONSIDERATIONS - ODOR CONTROL

- Nuisance Odors Associated With Natural Material/Decay Processes in Pompton Lake Can be Expected
- Contaminants of Concern (i.e. Mercury/Lead) Are Not Expected to Cause Odors
- An On-site Monitoring Team Will Continually Inspect Work Areas to Identify Odors as They Occur
- If Detected, Remedial Action Contractor Will Apply Mitigation Strategies



COMMUNITY CONSIDERATIONS - ODOR CONTROL

- Operational Strategies to Mitigate Odors Include:
 - Minimizing The Extent/Duration of Open Excavations
 - Installation of Backfill as Soon as Soil Excavations Are Complete
 - Implementing Dust Control Measures (e.g. Water Mist/Spray)
 - Minimizing Stockpiling of Excavated Material
 - Covering Stockpiles
 - Enclosing Individual Pieces of Equipment
- Additional Engineering/Operational Strategies to Mitigate Odors Include:
 - Apply Foaming Agent on Open Material to Provide Barrier to Contain Odor
 - Use of Odor Neutralizers (Not Deodorizer) if Foaming Agent Not Effective
- EPA Would Review/Approve Use of Odor Control Products Not Already Specified in Approved Work Plan



COMMUNITY CONSIDERATIONS - NOISE CONTROL

- Sound Levels Routinely Monitored During Work Day
 - 2x/Day at Locations Along Work Perimeter Nearest Noise Sources
 - New Noise Sources Begin or Create Higher Than Normal Noise
 - When Concerns Are Identified From the Community
- No Local Quantitative Noise Limit/Use New Jersey Limit of 65dBA For Daytime Noise
- Proactive Measures: Vibratory Method to Drive Sheetpile vs. Drop Hammer/Insulation Around Dredge Engine
- If Exceeded, Noise Controls/Modifications to the Work Operation Would be Implemented: Installing Mufflers on Gas Engines/Turn Off Equipment When Not in Use



COMMUNITY CONSIDERATIONS - AIR MONITORING

Dust Monitoring/Verification

- Continuous Real-Time Monitoring For Dust During Soil Excavation in Uplands and Sediment Handling/Processing
- 4 Fixed Locations Including One Location at Lakeside Middle School
- Early Warning Levels: If Exceeded, Prompt Evaluation And Dust Control Measures Implemented If Attributed to Work Activities
- Action Level Exceedance: 4 Consecutive Action Level Exceedances Then Sample Collection/Mercury Analysis & Dust Control Measures If Needed
- Dust Control Measures: Spraying Water on Identified Source(s)/Restrict Vehicle Speeds/Covering Excavation Faces



COMMUNITY CONSIDERATIONS - AIR MONITORING

Mercury Vapor Monitoring/Verification

- Previous Investigatory Work (Sampling/Modeling) Indicates Mercury Vapor is Not Expected to be Released During Sediment Handling/Processing
- Real-Time Monitoring For Mercury Vapor With a Portable Mercury Vapor Analyzer During Excavation in Uplands/Dredging/Sediment Handling & Processing
- Background Levels Prior to Work/Downwind Measurements in 15 Minute Intervals/Uplands Soil Areas Work Includes Monitoring on School Grounds
- Mercury Sample Collected/Analyzed If Action Level Exceeded After 4 Consecutive Readings



COMMUNITY CONSIDERATIONS - AIR MONITORING

Mercury Vapor Monitoring/Verification (Continued)

- If Lab Results Indicate Exceedance of Action Level Then Further Evaluation Using Mercury Vapor Analyzer Will be Used to Identify Sources
- Mitigation Measures Could Include
 - Vapor Suppression Foaming Agents Similar to Those Used For Odor Control
 - Modify Sediment Processing Equipment (e.g. Cover Openings to Prevent Emissions)



MONITORING REPORTING

- Dust/Mercury Vapor Measurements/Mercury Verification Sample Results Presented Graphically on Website for Public Access Within 24 Hours of Each Monitoring Day or 24 Hours After Receipt of Lab Data
- Noise/Odor Monitoring Results Posted to the Website for Public Access
- Water Quality Sampling Results Posted to the Website for Public Access Within 24 Hours After Receipt of Lab Data



PROXIMITY TO SCHOOL/RESIDENTS ALONG LAKESIDE AVENUE

- No Site-Related Cleanup Activity Will be Performed on the Actively Used Grounds of Lakeside Middle School (e.g. Athletic Fields)
- Fencing Between the Uplands and the School Will Have a Visual Screen
- No Walking Access on the Side of Lakeside Avenue Where Construction is Located
- New Crossing Areas to be Established and a Safe Walking Distance Will be Maintained Along Lakeside Avenue



PROXIMITY TO SCHOOL/RESIDENTS ALONG LAKESIDE AVENUE

- Flagmen/Truck Directors/Other Workers Will be Positioned at the Construction Gate Eliminating Opportunity for Non-work Personnel to Gain Site Access Through the Construction Entrance
- During School Opening/Closing, Transport of Materials/Other Construction Related Traffic Will be Suspended to Minimize Interference With School Related Traffic
- Interface With School Prior to Construction to Establish Point of Contact For Notification in the Unlikely Event of an Emergency Requiring Site Evacuation
- Fixed Air Monitoring Station Located on School Property and Field Technician Monitoring With Mercury Vapor Analyzer During Uplands Work



EPA OVERSIGHT OF CONSTRUCTION ACTIVITIES

- Provide Field Technical Oversight to Ensure Work Complies With Approved Work Plan
- Participation in Weekly Project Status Meetings
- EPA's Community Involvement Coordinator and Project Manager Will Continue Weekly Presence in the Community During Construction to Answer Questions/Respond to Community Concerns
- Perform Field Inspections During Construction Activities
- Review Technical Deliverables Submitted/Monitoring Data Generated During Construction Activities



NEAR-TERM SCHEDULE

- April 2016: EPA Approval of Chemours Work Plan
- Spring/Summer 2016: Uplands Soil Areas Work
- Fall/Winter (mid-December): Area A/Island Area
- Potential Schedule Constraints Include: Permit Approvals
- 2017 - Acid Brook Delta
- 2018 - Restoration and Initiation of Long-term Monitoring



COMMUNITY ENGAGEMENT ACTIVITIES - DREDGING

- Community Update Targeting Residential Concerns About Soil Excavation/Dredging
- On-going EPA Availability at Municipal Building on Thursdays to Answer Questions Regarding Pompton Lake Study Area Clean-up
- Access to Website to Observe Monitoring Data During Construction
- Newsletters/Email Updates
- Spring/Summer 2016: Target Time to Initiate Fieldwork



TAKE HOME MESSAGES - DREDGING PROJECT

- EPA/NJDEP Have Extensive Experience And Performed Many Environmental Clean-ups at Sites Close to Sensitive Populations, (e.g. School Age Children)
- No Site Related Clean-up Activity Will be Performed on The Actively Used Grounds of The School (e.g. Athletic Fields)
- Work Areas Secured/Access to the Construction Area Controlled
- Air/Noise/Dust/Odors Will be Monitored During Construction And Traffic Will be Controlled With Measures in Place to Address Any Issues
- Active, On-going Community Engagement Prior to/During/Post Construction



CLOSING

- Questions??
- Contacts:
 - Pat Seppi, Community Involvement Coordinator
646-369-0068
seppi.pat@epa.gov
 - Perry Katz, Project Manager
212-637-4426
katz.ira-perry@epa.gov