

*Region 2 serving the people of New Jersey,
New York, Puerto Rico and the U.S. Virgin Islands*



POMPTON LAKES WORKS PUBLIC AVAILABILITY SESSION

DECEMBER 10, 2015



12/9/2015



AGENDA

- Acid Brook Delta/Upland Soil Areas Dredging/Removal
 - ✓ Considerations for Community
 - ✓ Projected Schedule

- Vapor Intrusion

- Off-site Groundwater

- On-site Clean-up



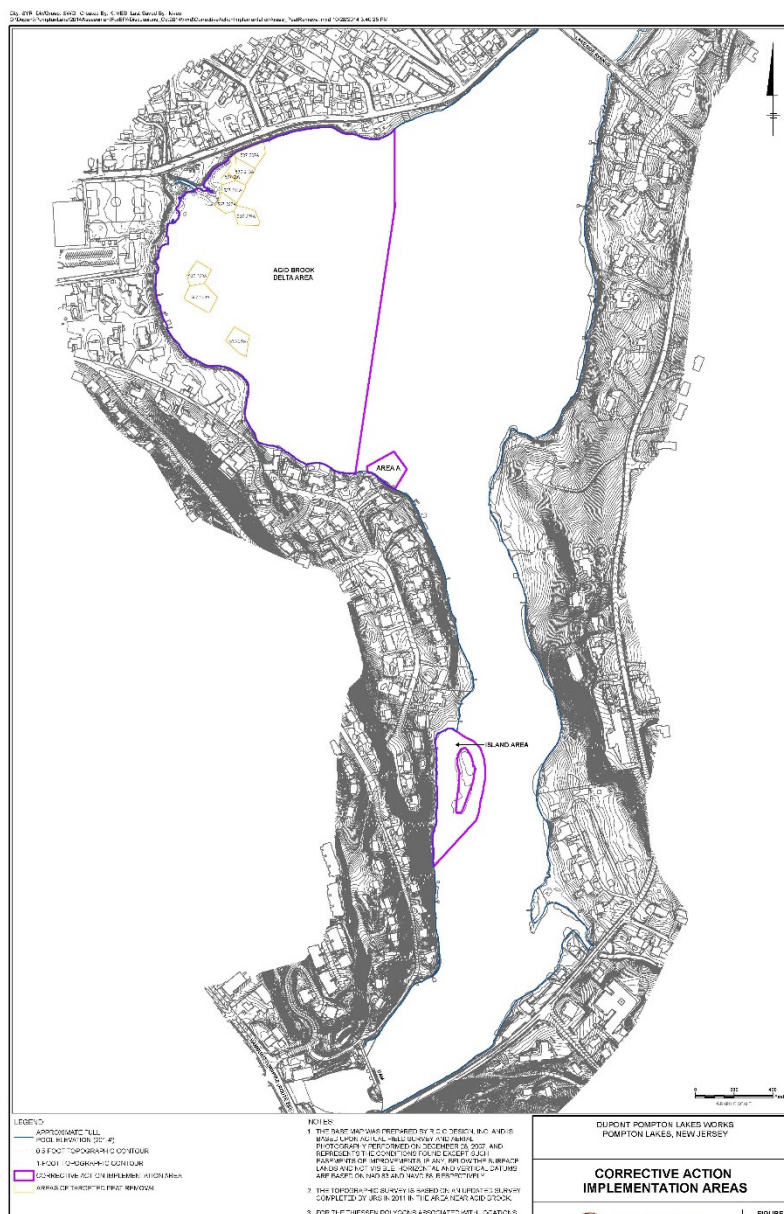
“DREDGING” PROJECT OVERVIEW

- Pompton Lake Study Area
 - Acid Brook Delta (ABD) Sediments - Approx. 36 Acres
 - Pompton Lake Sediments - Lakeside Ave. Bridge to Pompton Lake Dam
 - ✓ Area A - Approx. 0.5 Acres
 - ✓ Island Area - Approx. 2.5 Acres

- ABD Upland Soil Areas
 - Upland Soil Areas Outside Wetland/Wetland Transition Zone
 - Areas Within Wetland/Wetland Transition Zone



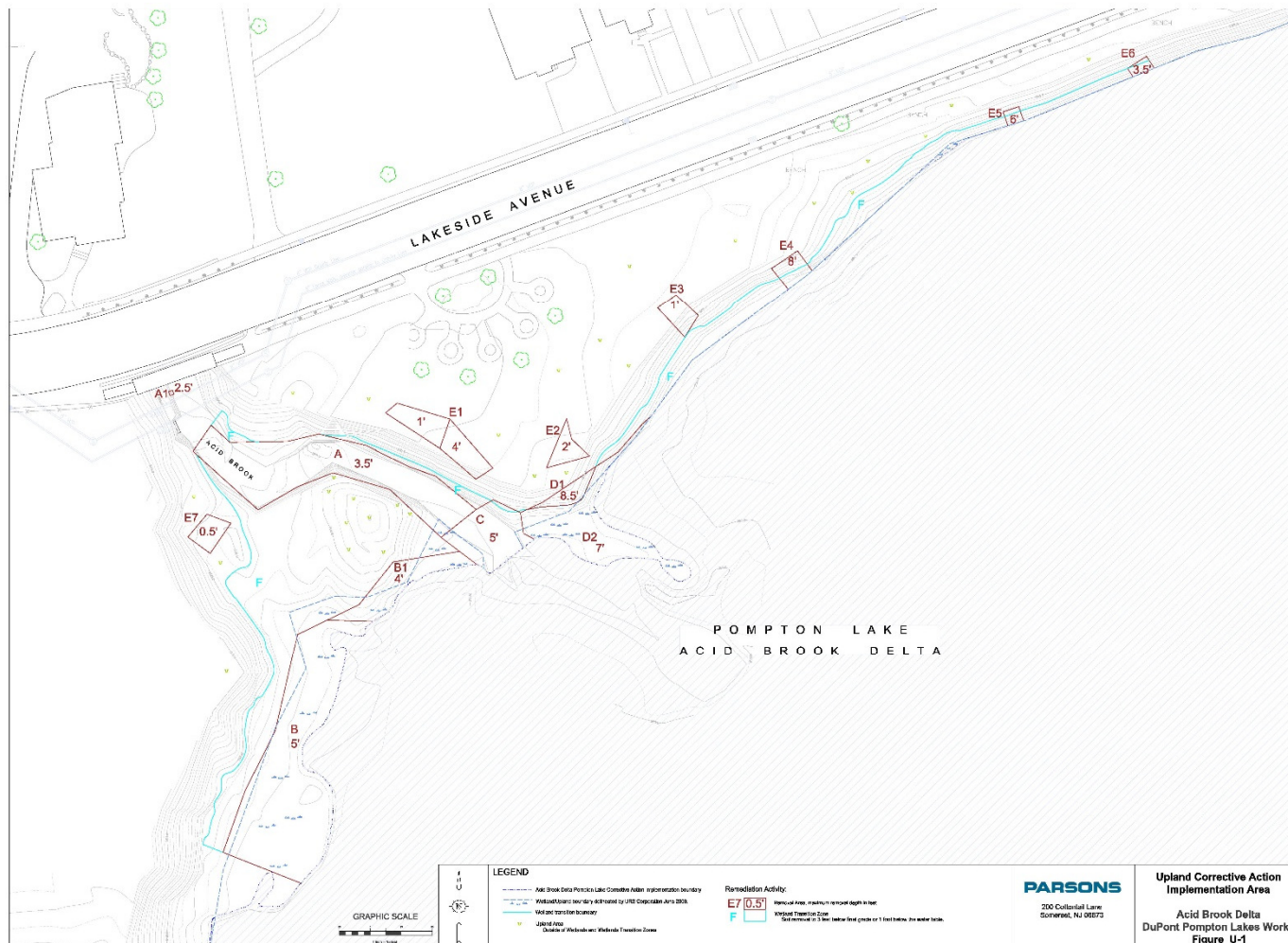
CORRECTIVE ACTION IMPLEMENTATION AREA



12/9/2015



ABD UPLAND SOIL REMOVAL AREAS



Upland Corrective Action Implementation Area
Acid Brook Delta
DuPont Pompton Lakes Works
Figure U-1



REMEDIATION PROJECT SUMMARY

- Plans Prepared by Chemours Subject to Review/Approval by EPA/NJDEP
- Remedial Approach for Sediment is Hydraulic and Mechanical Dredging and Restoration
- Remedial Approach for ABD Upland Soil Areas is Conventional Excavation and Restoration
- Dredged Sediment/Removed Soil Will be Disposed Off-site
- Field Oversight by EPA



“DREDGING” PLANNING DOCUMENTS

- Corrective Measures Implementation Work Plan (CMI WP)
http://www3.epa.gov/region02/waste/dupont_pompton/additionaldocs.html
 - Dredging/Removal Methods
 - Materials Handling/Transportation
 - Disposal of Sediment
 - Restoration Details
 - Health & Safety Plan/Quality Assurance Plan/Reporting

- Remediation & Restoration Plan for ABD Upland Soil Areas
 - Part of CMI WP
 - Addresses Same Considerations as ABD, Above
 - Will Detail Restoration of ABD Upland Soil Areas Including Wetland/Wetland Transition Zone



COMMUNITY CONSIDERATIONS - SITE SECURITY

- Temporary Fencing
 - Type and Configuration of Fence Being Reviewed by EPA/NJDEP
 - Fence will Separate Work Area From School

- Security Personnel
 - Security Proposed to be Continuously Maintained During Non-Working Hours
 - Specific Hours of Coverage Being Reviewed by EPA/NJDEP



COMMUNITY CONSIDERATIONS - AIR MONITORING

- Pre-design Work (Sampling/Modeling) Measuring Mercury Emissions From ABD Sediment Indicates Mercury Vapor Not a Concern
- Continuous Real-time Air Monitoring as well as Meteorological Monitoring
 - 4 Air Monitoring Stations Proposed with 1 Location at School
 - Dust Monitoring & Mercury Verification Sampling Proposed
- Results Posted on a Website Each Monitoring Day Within 24 Hours of Receipt of Lab Data or as Soon as Practicable
- Details Regarding the Final Number of Monitoring Locations/Parameters/ Posting of Results/Action Levels Under Review by EPA/NJDEP
- If Action Levels Established Are Exceeded, Modifications to the Work Would be Conducted



COMMUNITY CONSIDERATIONS - DUST CONTROL

- Dredging Will be Performed “in the wet”, But There is Potential For Dust Generation
- Dust May be Also Generated Due to Routine Construction Activities
- If Established Action Levels for Dust are Exceeded, Dust Control Measures (e.g. Water Mist/Spray) Will be Used
- Details Regarding Action Levels/Dust Control Measures Under Review by EPA/NJDEP



COMMUNITY CONSIDERATIONS - NOISE CONTROL

- Noise Controls Will be Implemented to Keep Noise at Safe and Tolerant Levels
- Noise Levels Will be Routinely Monitored During the Work Day
- Proposed Noise Level Limits Under Review by EPA/NJDEP
- If Exceeded, Noise Controls/Modifications to the Work Operation Would be Implemented



COMMUNITY CONSIDERATIONS - ODOR CONTROL

- Nuisance Odors Associated With Natural Material/Decay Processes in Pompton Lake Can be Expected
- An On-site Monitoring Team Will Continually Inspect Work Areas to Identify Odors as They Occur
- If Nuisance Odors Are Detected, Operational Strategies to Mitigate Odors Can be Used:
 - Minimizing The Extent/Duration of Open Excavations
 - Installation of Backfill as Soon as Soil Excavations Are Complete
 - Implementing Dust Control Measures (e.g. Water Mist/Spray)
 - Minimizing Stockpiling of Excavated Material
 - Applying Odor Suppressant Products
 - Covering Stockpiles
 - Enclosing Individual Pieces of Equipment



COMMUNITY CONSIDERATIONS -TRAFFIC CONTROL

- Proposed Traffic Route Under Review by EPA/NJDEP
- Proposed Route For Delivery of Materials, Equipment and Clean Fill to the Construction Site and the Removal of Remediated Material:
 - East on Lakeside Ave. to the stop at the bridge
 - East on Lakeside Ave. over the bridge to Terhune Ave. (US 202)
 - South on Terhune Ave. (US 202) to Paterson-Hamburg Turnpike
 - North on Paterson-Hamburg Turnpike
 - West on Paterson-Hamburg Turnpike to I-287 Interchange 53



COMMUNITY CONSIDERATIONS -TRAFFIC CONTROL

- Traffic Control (e.g. Signage, Flag Person) to be Provided Where Construction Activities May Impact/Halt Vehicle or Pedestrian Traffic
- During Daily School Opening/Closing, Construction-Related Traffic During Certain Hours Will be Temporarily Suspended to Minimize Interference With School-Related Traffic
- EPA Will Coordinate/Work With Local Traffic Control Officials/Police to Ensure Final Traffic Plans Remain Safe and Enforced
- Scheduling Meeting with County Engineer's Office to Review Proposed Route and Traffic Control Measures



NEAR-TERM SCHEDULE

- Effective Date of Final Permit: June 22, 2015
- Summer/Fall 2015: Chemours Prepares Work Plans For EPA & NJDEP Approval/Secures Fed, State, Local Permits & Procures Contractor
- Submittal of Corrective Action Implementation Work Plan: Sept 22nd
- Early 2016: Initiate Work (e.g. Fencing) Pending Executing Access Agreements and Securing NJDEP Permit
- Spring/Summer 2016: Uplands Soil Areas Work/Area A/Island Area
- Potential Schedule Constraints Include: Permit Approval/Contractor Procurement/Property Access



COMMUNITY ENGAGEMENT ACTIVITIES - DREDGING

- On-going EPA Availability at Municipal Building on Thursdays to Answer Questions Regarding Pompton Lakes Study Area Clean-up
- Summer/Fall 2015: Outreach to Local Officials, Stakeholder Groups, CAGs and Other Interested Parties to Solicit Feedback About Dredging
- Fall/Winter 2015: Meetings With Aforementioned Parties to Review Draft Technical Submittals and Obtain Additional Input
- Newsletters/Email Updates
- Spring/Summer 2016: Target Time to Initiate Fieldwork



TAKE HOME MESSAGES - DREDGING PROJECT

- EPA/NJDEP Have Extensive Experience And Performed Many Environmental Clean-ups at Sites Close to Sensitive Populations, (e.g. School Age Children)
- No Site Related Clean-up Activity Will be Performed on The Actively Used Grounds of The School (e.g. Athletic Fields)
- Work Areas Secured/Access to the Construction Area Controlled
- Air/Noise/Dust/Odors Will be Monitored During Construction And Traffic Will be Controlled With Measures in Place to Address Any Issues
- Active, On-going Community Engagement Prior to/During/Post Construction



VAPOR INTRUSION (VI) STATUS UPDATE

- EPA/NJDEP Session in August Dedicated to Answering Questions About VI Communication Packages Received in July
- Presented VI Program Update at Monthly Passaic County Board of Realtors Meeting in September to Area Realtors
- Number of Vapor Mitigation Systems Installed - 336
- Number of Requests for Termination Sampling - 3
 - 2 Properties Currently Undergoing Termination Sampling
 - 1 Property Seeking EPA/NJDEP Approval to Initiate Termination Sampling
- Continue to reach out to EPA, DEP, and/or Chemours With Questions About the VI Program and Communication Package Sent in July



HYDRAULIC SURCHARGING PILOT STUDY

- Surveying/Geophysical Work Completed
- Geotechnical Borings to be Performed Week of December 14th
- Design Submittal to Railroad and Then EPA/NJDEP in January
- Chemours Submittal of the Final Design (with Railroad's Approval) and Permit-by-Rule (PBR) Application to EPA/NJDEP Expected Late January/Early February 2016
- When PBR Package Approved by NJDEP, Public Notice Issued and Opportunity for Public Hearing, if Requested Available



IN-SITU CHEMICAL OXIDATION (ISCO) PILOT STUDY

- Pilot Study Evaluating Another Technology to Address Groundwater
- ISCO Work Plan Submitted Was Reviewed/Commented by EPA/NJDEP
- Chemours Procuring a Contractor to Perform Pilot Study - Short-list to 2 Vendors With Selection in January 2016
- EPA/NJDEP Work Plan Approval Expected in Early 2016
- Pilot Study Expected to Begin Mid-2016



ON-SITE CORRECTIVE MEASURES STUDY (CMS)

- Initial EPA/NJDEP CMS Comments Transmitted to Chemours
- Additional EPA/NJDEP CMS Comments to be Transmitted to Chemours
- Chemours to Revise CMS Based on NJDEP/EPA Comments
- Once Reviewed by EPA/NJDEP, CMS Will be Presented to Community Via Public Information Session
- Draft Permit Modification Will be Prepared With a Public Hearing/Public Comment



CLOSING

- Questions??
- Contacts:
 - Pat Seppi, Community Involvement Coordinator
646-369-0068
seppi.pat@epa.gov
 - Perry Katz, Project Manager
212-637-4426
katz.ira-perry@epa.gov