

Appendix J

Pre-Design Flux Chamber
Analysis and Modeling

TO: Dave Epps and Ed Seger – DuPont Corporate Remediation Group **cc:**
FROM: Mark Distler – O'Brien & Gere Engineers, Inc.
RE: Pompton Lakes Sediment Emissions Evaluation
FILE: 3914/46472
DATE: February 22, 2011 (Draft)

This Technical Memorandum provides a summary of the emissions evaluation from lake sediment samples, discusses the results, and recommends work area perimeter air monitoring criteria during future lake sediment dredging operations at Pompton Lakes, New Jersey. The evaluation consisted of flux chamber tests to estimate mercury emission flux rates and subsequent dispersion modeling to estimate ambient air concentrations of mercury at the nearest work area perimeter location.

FLUX CHAMBER TESTING

O'Brien & Gere evaluated five gallons of Pompton Lake sediment samples on January 6, 2011 in Syracuse, New York. Samples were provided by Parsons Corporation who had samples stored in their Syracuse facility. Flux chamber tests were conducted in triplicate on wet (as-is, after stirring) sediment to measure mercury (elemental) vapor emission flux rates in units of micrograms per square meter per hour ($\mu\text{g}/\text{m}^2/\text{hr}$). The flux chamber was suspended into a portion of the mixed slurry to a one-inch depth, and sweep air was supplied from a tank of nitrogen and regulated using a calibrated rotometer. After equilibration of the flux chamber headspace (four air exchanges), the chamber's effluent air was metered into a Tedlar bag for mercury vapor analysis using an Ohio Lumex 915 real-time mercury vapor analyzer. One sample of wet sediment was sent to a subcontracted laboratory to be analyzed for total mercury concentration (via EPA Method 7471) and water content.

A new aliquot of sediment sample was then dewater via strainer, mixed to achieve a homogeneous water content, and tested so that it passed the paint filter test (Method 9095B). The flux chamber tests were repeated, in triplicate, on the dewatered sediment. One sample of dewatered sediment was also sent to a subcontracted laboratory to be analyzed for mercury concentration and water content.

For each test, in addition to the mercury vapor emission concentration, the following test data were also recorded:

- Elapsed Time (minutes)
- Air Flow Rate (L/min)
- Air Temperature ($^{\circ}\text{F}$)
- Relative Humidity (%)
- Sediment Temperature ($^{\circ}\text{F}$)
- Outlet Total VOC Concentration (ppb)
- Sediment Surface Area (m^2)

The results of each test are summarized in Table 1. For each test, the mercury vapor concentrations were below the minimum detection limit (MDL) of the monitoring equipment. Therefore, the concentration of mercury vapor for each of the 6 tests was recorded as <0.1 micrograms per cubic meter ($\mu\text{g}/\text{m}^3$). The emission flux rates were then calculated using the MDL, the flow rate through the flux chamber, and surface area of the sediment to yield an emission flux rate of <0.23 $\mu\text{g}/\text{m}^2/\text{hr}$ for each test.

The laboratory analytical sample for total mercury concentration (via EPA Method 7471) and water content results are summarized in Table 1; the laboratory reports are provided in Attachment 1.

DISPERSION MODELING

The emission flux rates were used in conjunction with the USEPA AERMOD (Version 09292) air dispersion modeling software to estimate the maximum 1-hour ambient air concentration of mercury at the nearest work zone perimeter.

The as measured emission flux rate is assumed to be equivalent to the flux chamber's detection limit (0.23 $\mu\text{g}/\text{m}^2/\text{hr}$). This is a conservative assumption in that the actual emission flux rate is less than this value. Table 2 also presents other emission flux rates for mercury in sediment concentrations other than that measured by the flux chamber tests. Marj Vetter of Parsons Corporation provided the results of 886 sediments samples collected from Pompton Lake between 1990 and 2007. These data are provided in Attachment 2. Emission flux rates and emission rates were calculated for two other sediment concentrations: average and 99th percentile (near maximum), as shown on Table 2.

Emission flux rates were converted to an emission rate by assuming that the total surface area of sediment to be processed in the processing area was equal to 10 open containers for a total surface area of 156 square meters. The assumed location of the containers is shown in Figure 1.

Emission rates were used in the dispersion model along with meteorological data provided by NJDEP, spanning from 1991 to 1995 and consisting of surface air data from Newark, NJ and upper air data from Brookhaven, NY.

The model results, shown in Table 3, are estimated maximum 1-hour average ambient concentrations of mercury vapor at receptor locations placed along the work zone perimeters as presented in Figure 1. For all three mercury sediment concentrations, the estimated maximum ambient concentrations are less than 1 percent of the USEPA Regional Screening Level (RSL)¹ for elemental mercury of 0.31 $\mu\text{g}/\text{m}^3$.

RESULTS DISCUSSION

Based on the results of the flux chamber testing and dispersion modeling, mercury vapor at the work zone perimeter would not be a concern for sediment storage during dredging. It is also likely that sediment handling (moving, excavating, filtering, or other mechanical means would not be a concern because it appears that mercury in the sediment is not in a state that readily vaporizes.

Mercury in the environment can be found in three valence states: metallic (elemental) and inorganic and organic complexes². Several factors determine the specific state and form in which mercury exists in an environmental medium, including the redox potential and pH of the medium. Elemental mercury (a liquid at ambient temperatures) readily volatilizes to mercury vapor. Inorganic and organic forms of mercury do not readily vaporize in ambient air conditions because they have been partitioned to particulates. The vaporization of inorganic and organic mercury in sediment is possible but conditions required to do so are controlled by elevated temperature (e.g., thermal treatment) and reduction of mercury by soil microbes.

The lack of low level detection of mercury vapor can be attributed to the lack of elemental mercury present in the sediment. The mercury that is found in the sediment is likely in the form of organic and/or inorganic mercury. As such, the mercury does not readily vaporize to the atmosphere, but rather is trapped with the particulates. Therefore, mercury vapor emissions from lake sediment dredging operations should not be a concern.

¹ USEPA, 2010. Regional Screening Level, Resident Air Supporting Table, November 2010.

² Agency for Toxic Substances and Disease Registry (ATSDR). 1999. Toxicological profile for Mercury. Atlanta, GA: U.S. Department of Health and Human Services, Public Health Service.

RECOMMENDATIONS

Although mercury vapors should not cause a concern during handling of dredged sediment, mercury air emissions may still occur but on particulates rather than as vapor. If there are dust (particulate) emissions from the processing area, then there will be particulate-bound mercury emissions as well. Therefore, we recommend that particulate (dust) concentrations, rather than mercury vapor, be monitored at the work zone perimeters to assist with an emissions control program. We further recommend that the ambient air monitoring program consist of the following:

- Real-time total particulate monitoring at upwind and downwind perimeter locations that provides 15-minute and 1-hour averages
- Selection of particulate work zone limit that will be protective of mercury inhalation
- Use of an emissions control level equal to 50% of the work zone limit so that controls can be applied to particulate emission sources before work zone limit is reached

The work zone limit for particulate can be derived using the RSL and the 99th percentile mercury concentration in sediment, as follows:

$$\begin{aligned}\text{Particulate limit } (\mu\text{g}/\text{m}^3) &= 0.31 \mu\text{g}/\text{m}^3 (\text{Hg limit}) \times 10^6 \text{ mg sediment} / 1456 \text{ mg Hg} \\ &= 213 \mu\text{g}/\text{m}^3\end{aligned}$$

This is an hourly average limit. We recommend that the emissions control program use a control level that will trigger the need for additional emission controls of the processing source. The control level should use a shorter averaging period and a lower limit, such as 106 $\mu\text{g}/\text{m}^3$ (50% of the perimeter limit) over a 15-minute period above background. Background would also be measured real-time throughout the monitoring program using an upwind monitoring location. If a downwind monitor exceeds the control level after adjustment for the background level, then additional controls of the offending processing sources should be immediately implemented to avoid exceedance of the perimeter limit.

Attachments: Table 1 – Flux Chamber Testing Results
Table 2 – Emission Rate Calculations
Table 3 – Dispersion Modeling Results
Figure 1 – Anticipated Sediment Processing Locations
Attachment 1 – Flux Chamber Sediment Sample Analytical Report
Attachment 2 – Pompton Lakes Sediment Concentrations

Tables 1 - 3

DRAFT

Table 1

Pompton Lakes Remediation
Pompton Lakes, New Jersey

Flux Chamber Testing Results

Test Information:		Air Wet Test 1 Outlet Primary		Air Wet Test 2 Outlet Primary		Air Wet Test 3 Outlet Primary		Air DeWatered Test 1 Outlet Primary		Air DeWatered Test 2 Outlet Primary		Air DeWatered Test 3 Outlet Primary	
Sample Type	Test Interval/Stage/Treatment	Conc. $\mu\text{g}/\text{m}^3$	Emission Flux Rate ^a $\mu\text{g}/\text{m}^2/\text{hr}$	Conc. $\mu\text{g}/\text{m}^3$	Emission Flux Rate $\mu\text{g}/\text{m}^2/\text{hr}$	Conc. $\mu\text{g}/\text{m}^3$	Emission Flux Rate $\mu\text{g}/\text{m}^2/\text{hr}$	Conc. $\mu\text{g}/\text{m}^3$	Emission Flux Rate $\mu\text{g}/\text{m}^2/\text{hr}$	Conc. $\mu\text{g}/\text{m}^3$	Emission Flux Rate $\mu\text{g}/\text{m}^2/\text{hr}$	Conc. $\mu\text{g}/\text{m}^3$	Emission Flux Rate $\mu\text{g}/\text{m}^2/\text{hr}$
Sampling Location	Primary/Duplicate Sample	CAS	MW										
Mercury (elemental) Vapor		78.1134		<0.1	<0.23	<0.1	<0.23	<0.1	<0.23	<0.1	<0.23	<0.1	<0.23
Chamber Measurements:													
Equilibration Time (minutes)				10	10	10	10	9	9	10	10	10	10
Air Flow Rate (L/min)				5.00	5.00	5.00	5.00	5.00	5.00	5.00	5.00	5.00	5.00
Air Flow Rate (m ³ /hr) - derived				0.30	0.30	0.30	0.30	0.30	0.30	0.30	0.30	0.30	0.30
Air Temperature (°F)				60	61	61	61	63	63	62	62	NA	NA
Relative Humidity (%)				24	25	25	25	20	20	21	21	NA	NA
Sediment/Slurry Temp (°F)				58	58	59	59	59	59	59	59	59	59
Outlet Total VOC Concentration (ppb)				0.0	0.0	0.0	0.0	0.0	0.0	0.0	0.0	0.0	0.0
Sediment/Slurry Surface Area (m ²) (16" diam. Flux chamb.)				0.13	0.13	0.13	0.13	0.13	0.13	0.13	0.13	0.13	0.13
Laboratory Sediment Sample Analysis:													
Mercury (total) Concentration (mg/Kg)				239				219					
Moisture Content (% weight)				70.7				60.1					

Notes:

^a Emission Rate ($\mu\text{g}/\text{m}^2/\text{hr}$) = Conc ($\mu\text{g}/\text{m}^3$) x Air Flow Rate (m³/hr) / Sediment Surface Area (m²)

Table 2

Pompton Lakes Remediation
 Pompton Lakes, New Jersey

Emission Rate Calculations

Contaminant	Mercury Concentration in Sediment (mg/Kg) ^a		Emission Flux Rate ^b (µg/m ² /hr)	Emission Flux Rate ^c (g/m ² /s)	Area ^d (m ²)	Hourly Emission Rate ^e (g/s)
Mercury Vapor	As Measured	229	0.23	6.39E-11	156	9.97E-09
	Average	113	0.11	3.15E-11	156	4.92E-09
	99th Percentile	1456	1.5	4.06E-10	156	6.34E-08

Notes:

^a As measured concentration is based on average of two analytical results from sediment used in the flux chamber testing. Average and 99th percentile concentrations were taken from 886 sediment samples analyzed between 1990 and 2007 (Parsons).

^b As measured rate is based on January 6, 2011 flux chamber testing; conservatively assumes emission flux rate is equal to testing detection limit. Average and 99th percentile sediment concentrations assume a linear relationship between sediment concentrations and emission flux rate.

^c Emission Flux Rate (µg/m²/s) = Emission Flux Rate (µg/m²/hr) / 10⁶ (µg/g) / 3,600 (s/hr).

^d Area is based on 10 open containers with a footprint of 8 feet by 21 feet each and arranged in two rows of five (40 foot by 42 foot area).

^e Hourly Emission Rate (g/s) = Emission Flux Rate (g/m²/s) x Area (m²).

Table 3

*Pompton Lakes Remediation
Pompton Lakes, New Jersey*

Dispersion Modeling Results

<i>Contaminant</i>	<i>Averaging Period</i>	<i>Mercury Concentration in Sediment (mg/Kg)^a</i>	<i>Estimated Maximum Ambient Concentration^b (µg/m³)</i>	<i>Regional Screening Level^c (µg/m³)</i>	<i>Percent Regional Screening Level (%)</i>	
Mercury Vapor	1-Hour	As Measured	229	0.00021	0.31	<1
		Average	113	0.00010	0.31	<1
		99th Percentile	1456	0.00132	0.31	<1

Notes:

^a As measured concentration is based on average of two analytical results from sediment used in the flux chamber testing. Average and 99th percentile concentrations were taken from 886 sediment samples analyzed between 1990 and 2007 (Parsons).

^b Estimated Maximum Ambient Concentration at work zone perimeters.

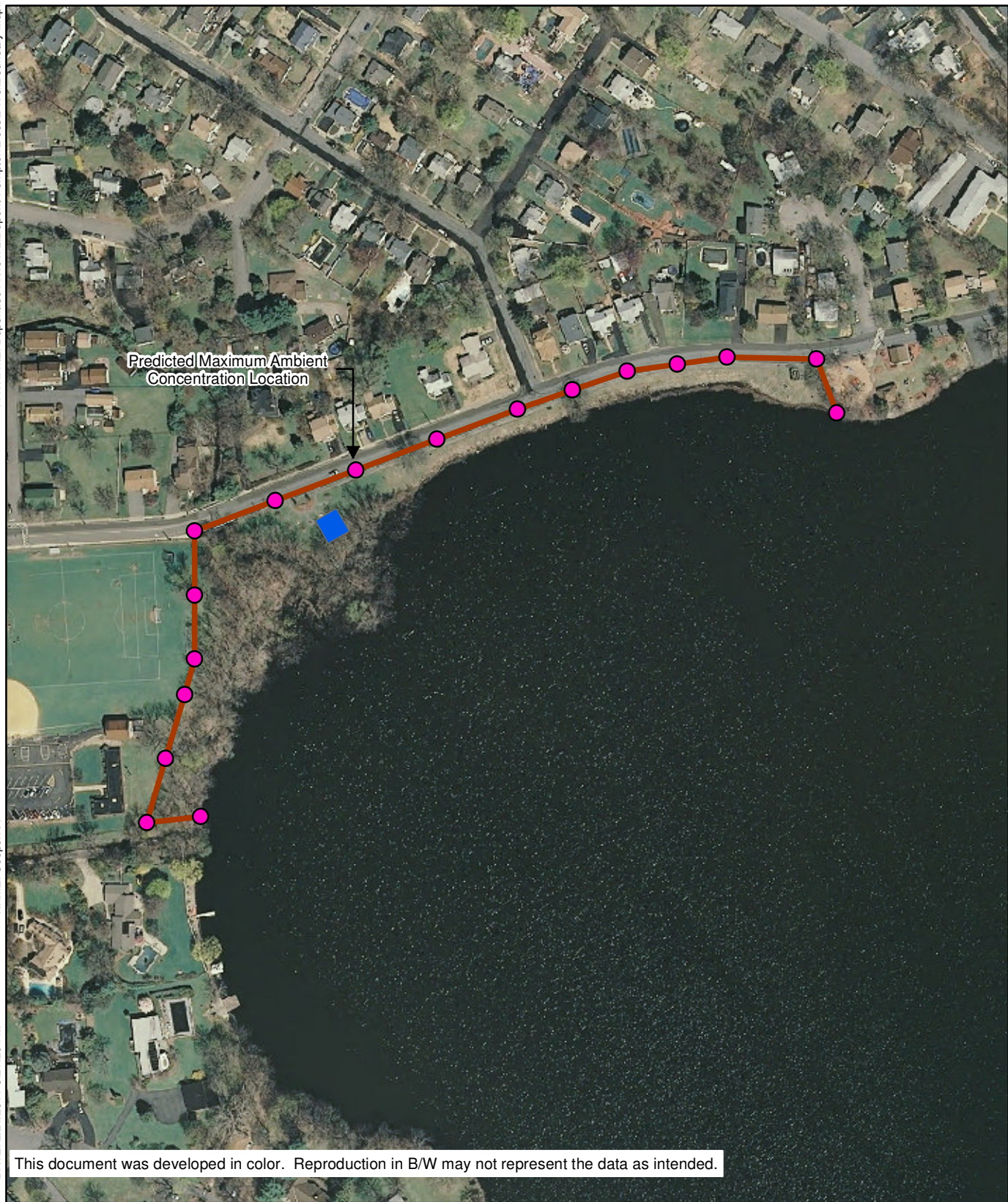
^c USEPA Regional Screening Level for elemental mercury, Resident, Inhalation, November 2010.

*Anticipated Sediment
Processing Locations*

PATH: I:\E:\Dupont.3914\46472.Dupont-Pompton\Docs\DWG\Boundary Map.mxd

NAME: Cooper\KA

DATE: 2/21/2011 3:21:29 PM



This document was developed in color. Reproduction in B/W may not represent the data as intended.

LEGEND

- Modeling Receptors
- Sediment Containers
- Sediment Processing Work Zone Perimeter

POMPTON LAKES REMEDIATION
 POMPTON LAKES, NEW JERSEY
**ANTICIPATED SEDIMENT
 PROCESSING LOCATIONS**



*Flux Chamber Sediment
Sample Analytical Report*

ANALYTICAL REPORT

Job Number: 200-3229-1

SDG Number: 200-3229

Job Description: DuPont Pompton Lakes

For:

O'Brien & Gere Technical Services Inc
PO BOX 4873
333 West Washington St.
Syracuse, NY 13221-4873

Attention: Mr. Scott Manchester



Approved for release.
Don C Dawicki
Project Manager II
1/14/2011 3:47 PM

Don C Dawicki
Project Manager II
don.dawicki@testamericainc.com
01/14/2011

The test results in this report relate only to sample(s) as received by the laboratory. These test results were derived under a quality system that adheres to the requirements of NELAC. Pursuant to NELAC, this report may not be produced in full without written approval from the laboratory

Table of Contents

Cover Title Page	1
Data Summaries	4
Report Narrative	4
Sample Summary	5
Executive Summary	6
Method Summary	7
Method / Analyst Summary	8
Sample Datasheets	9
QC Data Summary	13
Data Qualifiers	14
QC Association Summary	15
Lab Chronicle	16
Inorganic Sample Data	17
Metals Data	17
Met Cover Page	18
Met Sample Data	19
Met QC Data	21
Met ICV/CCV	21
Met Blanks	22
Met LCS/LCSD	24
Met MDL	25
Met Preparation Log	27
Met Analysis Run Log	28
Met Raw Data	29
Met Prep Data	32
General Chemistry Data	33

Table of Contents

Gen Chem Cover Page	34
Gen Chem MDL	35
Gen Chem Analysis Run Log	36
Gen Chem Prep Data	37
Shipping and Receiving Documents	39
Client Chain of Custody	40
Sample Receipt Checklist	42

CASE NARRATIVE

Client: O'Brien & Gere Technical Services Inc

Project: DuPont Pompton Lakes

Report Number: 200-3229-1

With the exceptions noted as flags or footnotes, standard analytical protocols were followed in the analysis of the samples and no problems were encountered or anomalies observed. In addition all laboratory quality control samples were within established control limits, with any exceptions noted below. Each sample was analyzed to achieve the lowest possible reporting limit within the constraints of the method. In some cases, due to interference or analytes present at high concentrations, samples were diluted. For diluted samples, the reporting limits are adjusted relative to the dilution required.

Calculations are performed before rounding to avoid round-off errors in calculated results.

All holding times were met and proper preservation noted for the methods performed on these samples, unless otherwise detailed in the individual sections below.

RECEIPT

The samples were received on 01/07/2011; the samples arrived in good condition, properly preserved and on ice. The temperature of the coolers at receipt was 7.2 C.

TOTAL MERCURY

Samples Y1-WET-1/6/11 and Y1-DRY-1/6/11 were analyzed for total mercury in accordance with EPA SW-846 Method 7471A. The samples were prepared on 01/10/2011 and analyzed on 01/11/2011.

Mercury was detected in method blank MB 200-12000/11-A at a level that was above the method detection limit but below the reporting limit. The value should be considered an estimate, and has been flagged "J". If the associated sample reported a result above the MDL and/or RL, the result has been "B" flagged. Refer to the QC report for details.

No other difficulties were encountered during the mercury analyses.

All other quality control parameters were within the acceptance limits.

PERCENT SOLIDS

Samples Y1-WET-1/6/11 and Y1-DRY-1/6/11 were analyzed for percent solids in accordance with EPA SW846 3550C. The samples were analyzed on 01/10/2011.

No difficulties were encountered during the % solids analyses.

All quality control parameters were within the acceptance limits.

SAMPLE SUMMARY

Client: O'Brien & Gere Technical Services Inc

Job Number: 200-3229-1
Sdg Number: 200-3229

Lab Sample ID	Client Sample ID	Client Matrix	Date/Time Sampled	Date/Time Received
200-3229-1	Y1-WET-1/6/11	Sediment	01/06/2011 1400	01/07/2011 1015
200-3229-2	Y1-DRY-1/6/11	Sediment	01/06/2011 1620	01/07/2011 1015

EXECUTIVE SUMMARY - Detections

Client: O'Brien & Gere Technical Services Inc

Job Number: 200-3229-1

Sdg Number: 200-3229

Lab Sample ID	Client Sample ID	Result / Qualifier	Reporting Limit	Units	Method
200-3229-1	Y1-WET-1/6/11				
Mercury		239 B	10	mg/Kg	7471A
Percent Moisture		70.7	0.25	%	Moisture
Percent Solids		29.3	0.25	%	Moisture
200-3229-2	Y1-DRY-1/6/11				
Mercury		219 B	8.0	mg/Kg	7471A
Percent Moisture		60.1	0.25	%	Moisture
Percent Solids		39.9	0.25	%	Moisture

METHOD SUMMARY

Client: O'Brien & Gere Technical Services Inc

Job Number: 200-3229-1

Sdg Number: 200-3229

Description	Lab Location	Method	Preparation Method
Matrix: Sediment			
Mercury (CVAA)	TAL BUR	SW846 7471A	
Preparation, Mercury	TAL BUR		SW846 7471A
Percent Moisture	TAL BUR	EPA Moisture	

Lab References:

TAL BUR = TestAmerica Burlington

Method References:

EPA = US Environmental Protection Agency

SW846 = "Test Methods For Evaluating Solid Waste, Physical/Chemical Methods", Third Edition, November 1986 And Its Updates.

METHOD / ANALYST SUMMARY

Client: O'Brien & Gere Technical Services Inc

Job Number: 200-3229-1

Sdg Number: 200-3229

Method	Analyst	Analyst ID
SW846 7471A	Sachs, Austin L	ALS
EPA Moisture	Nelson, Andrea J	AJN

Analytical Data

Client: O'Brien & Gere Technical Services Inc

Job Number: 200-3229-1

Sdg Number: 200-3229

Client Sample ID: Y1-WET-1/6/11

Lab Sample ID: 200-3229-1

Date Sampled: 01/06/2011 1400

Client Matrix: Sediment

% Moisture: 70.7

Date Received: 01/07/2011 1015

7471A Mercury (CVAA)

Method: 7471A

Analysis Batch: 200-12063

Instrument ID:

MEPCV3 II

Preparation: 7471A

Prep Batch: 200-12000

Lab File ID:

011111AA.PRN

Dilution: 100

Initial Weight/Volume:

0.34 g

Date Analyzed: 01/11/2011 1037

Final Weight/Volume:

50 mL

Date Prepared: 01/10/2011 0958

Analyte	DryWt Corrected: Y	Result (mg/Kg)	Qualifier	MDL	RL
Mercury		239	B	3.3	10

Analytical Data

Client: O'Brien & Gere Technical Services Inc

Job Number: 200-3229-1

Sdg Number: 200-3229

General Chemistry

Client Sample ID: Y1-WET-1/6/11

Lab Sample ID: 200-3229-1

Date Sampled: 01/06/2011 1400

Client Matrix: Sediment

Date Received: 01/07/2011 1015

Analyte	Result	Qual	Units	RL	RL	Dil	Method
Percent Moisture	70.7		%	0.25	0.25	1.0	Moisture
	Analysis Batch: 200-12011	Date Analyzed: 01/10/2011		1110			DryWt Corrected: N
Percent Solids	29.3		%	0.25	0.25	1.0	Moisture
	Analysis Batch: 200-12011	Date Analyzed: 01/10/2011		1110			DryWt Corrected: N

Analytical Data

Client: O'Brien & Gere Technical Services Inc

Job Number: 200-3229-1

Sdg Number: 200-3229

General Chemistry

Client Sample ID: Y1-DRY-1/6/11

Lab Sample ID: 200-3229-2

Date Sampled: 01/06/2011 1620

Client Matrix: Sediment

Date Received: 01/07/2011 1015

Analyte	Result	Qual	Units	RL	RL	Dil	Method
Percent Moisture	60.1		%	0.25	0.25	1.0	Moisture
	Analysis Batch: 200-12011	Date Analyzed: 01/10/2011		1110			DryWt Corrected: N
Percent Solids	39.9		%	0.25	0.25	1.0	Moisture
	Analysis Batch: 200-12011	Date Analyzed: 01/10/2011		1110			DryWt Corrected: N

Quality Control Results

Client: O'Brien & Gere Technical Services Inc

Job Number: 200-3229-1

Sdg Number: 200-3229

Method Blank - Batch: 200-12000

Method: 7471A

Preparation: 7471A

Lab Sample ID: MB 200-12000/11-A
Client Matrix: Sediment
Dilution: 1.0
Date Analyzed: 01/11/2011 1032
Date Prepared: 01/10/2011 0958

Analysis Batch: 200-12063
Prep Batch: 200-12000
Units: mg/Kg

Instrument ID: MEPCV3 II
Lab File ID: 011111AA.PRN
Initial Weight/Volume: 0.30 g
Final Weight/Volume: 50 mL

Analyte	Result	Qual	MDL	RL
Mercury	0.0200	J	0.011	0.033

Lab Control Sample - Batch: 200-12000

Method: 7471A

Preparation: 7471A

Lab Sample ID: LCS 200-12000/12-A
Client Matrix: Sediment
Dilution: 1.0
Date Analyzed: 01/11/2011 1034
Date Prepared: 01/10/2011 0958

Analysis Batch: 200-12063
Prep Batch: 200-12000
Units: mg/Kg

Instrument ID: MEPCV3 II
Lab File ID: 011111AA.PRN
Initial Weight/Volume: 0.50 g
Final Weight/Volume: 50 mL

Analyte	Spike Amount	Result	% Rec.	Limit	Qual
Mercury	0.100	0.110	110	85 - 115	

DATA REPORTING QUALIFIERS

Client: O'Brien & Gere Technical Services Inc

Job Number: 200-3229-1

Sdg Number: 200-3229

Lab Section	Qualifier	Description
Metals		
	B	Compound was found in the blank and sample.
	U	Indicates the analyte was analyzed for but not detected.
	J	Result is less than the RL but greater than or equal to the MDL and the concentration is an approximate value.

Quality Control Results

Client: O'Brien & Gere Technical Services Inc

Job Number: 200-3229-1

Sdg Number: 200-3229

QC Association Summary

Lab Sample ID	Client Sample ID	Report Basis	Client Matrix	Method	Prep Batch
Metals					
Prep Batch: 200-12000					
LCS 200-12000/12-A	Lab Control Sample	T	Sediment	7471A	
MB 200-12000/11-A	Method Blank	T	Sediment	7471A	
200-3229-1	Y1-WET-1/6/11	T	Sediment	7471A	
200-3229-2	Y1-DRY-1/6/11	T	Sediment	7471A	
Analysis Batch:200-12063					
LCS 200-12000/12-A	Lab Control Sample	T	Sediment	7471A	200-12000
MB 200-12000/11-A	Method Blank	T	Sediment	7471A	200-12000
200-3229-1	Y1-WET-1/6/11	T	Sediment	7471A	200-12000
200-3229-2	Y1-DRY-1/6/11	T	Sediment	7471A	200-12000

Report Basis

T = Total

General Chemistry

Analysis Batch:200-12011					
200-3229-1	Y1-WET-1/6/11	T	Sediment	Moisture	
200-3229-2	Y1-DRY-1/6/11	T	Sediment	Moisture	

Report Basis

T = Total

Quality Control Results

Client: O'Brien & Gere Technical Services Inc

Job Number: 200-3229-1
SDG: 200-3229

Laboratory Chronicle

Lab ID: 200-3229-1

Client ID: Y1-WET-1/6/11

Sample Date/Time: 01/06/2011 14:00

Received Date/Time: 01/07/2011 10:15

Method	Bottle ID	Run	Analysis Batch	Prep Batch	Date Prepared / Analyzed	Dil	Lab	Analyst
P:7471A	200-3229-A-1-A ^100		200-12063	200-12000	01/10/2011 09:58	100	TAL BUR	ALS
A:7471A	200-3229-A-1-A ^100		200-12063	200-12000	01/11/2011 10:37	100	TAL BUR	ALS
A:Moisture	200-3229-A-1		200-12011		01/10/2011 11:10	1	TAL BUR	AJN

Lab ID: 200-3229-2

Client ID: Y1-DRY-1/6/11

Sample Date/Time: 01/06/2011 16:20

Received Date/Time: 01/07/2011 10:15

Method	Bottle ID	Run	Analysis Batch	Prep Batch	Date Prepared / Analyzed	Dil	Lab	Analyst
P:7471A	200-3229-A-2-A ^100		200-12063	200-12000	01/10/2011 09:58	100	TAL BUR	ALS
A:7471A	200-3229-A-2-A ^100		200-12063	200-12000	01/11/2011 10:39	100	TAL BUR	ALS
A:Moisture	200-3229-A-2		200-12011		01/10/2011 11:10	1	TAL BUR	AJN

Lab ID: MB

Client ID: N/A

Sample Date/Time: N/A

Received Date/Time: N/A

Method	Bottle ID	Run	Analysis Batch	Prep Batch	Date Prepared / Analyzed	Dil	Lab	Analyst
P:7471A	MB 200-12000/11-A		200-12063	200-12000	01/10/2011 09:58	1	TAL BUR	ALS
A:7471A	MB 200-12000/11-A		200-12063	200-12000	01/11/2011 10:32	1	TAL BUR	ALS

Lab ID: LCS

Client ID: N/A

Sample Date/Time: N/A

Received Date/Time: N/A

Method	Bottle ID	Run	Analysis Batch	Prep Batch	Date Prepared / Analyzed	Dil	Lab	Analyst
P:7471A	LCS 200-12000/12-A		200-12063	200-12000	01/10/2011 09:58	1	TAL BUR	ALS
A:7471A	LCS 200-12000/12-A		200-12063	200-12000	01/11/2011 10:34	1	TAL BUR	ALS

Lab References:

TAL BUR = TestAmerica Burlington

*Pompton Lakes
Sediment Concentrations*

**Attachment 2
Pompton Lakes Sediment Concentrations**

PROJECT	STATUS	SRCNAME	THEME	SAMPLE_MATRIX	DATESMPL	SMPLT	SAMPLE_NUMBER	TOP	BOTTOM	DepthUnit	FILTERED	CASNO	ANALYTE	RsltPost	RsltVal	UNITS	Hlt
ABD LL HG SAMPLING 8/04	DDR	537-214	Sediment	SEDIMENT	14-Aug-04	FS	POM-E-537-214	0	0	Feet	T	7439976	MERCURY	0.00226	0.00226	MG/KG	1
ABD LL HG SAMPLING 8/04	DDR	537-208	Sediment	SEDIMENT	14-Aug-04	FS	POM-E-537-208	0	0	Feet	T	7439976	MERCURY	0.00311	0.00311	MG/KG	1
ABD LL HG SAMPLING 8/04	DDR	537-208	Sediment	SEDIMENT	14-Aug-04	FS	POM-E-537-208	0	0	Feet	T	7439976	MERCURY	0.0063	0.0063	MG/KG	1
ABD LL HG SAMPLING 8/04	DDR	537-214	Sediment	SEDIMENT	14-Aug-04	FS	POM-E-537-214	0	0	Feet	T	7439976	MERCURY	0.0325	0.0325	MG/KG	1
ABD SPRING SAMPLING 2010	DDR	537-204A	Sediment	SEDIMENT	19-May-10	FS	POM-E-537-204A(2.3-2.8)	2.3	2.8	Feet	T	7439976	MERCURY	ND (0.0387)	0.0387	MG/KG	0
SAM93-10	MIGRATED	537-151	Sediment	SEDIMENT	12-Apr-93	FS	537-151-60	5	5.5	Feet	T	7439976	MERCURY	ND (0.1)	0.1	MG/KG	0
SAM93-10	MIGRATED	537-152	Sediment	SEDIMENT	20-Apr-93	FS	537-152-114	9.5	10	Feet	T	7439976	MERCURY	ND (0.1)	0.1	MG/KG	0
SAM93-10	MIGRATED	537-152	Sediment	SEDIMENT	20-Apr-93	DUP	537-152-60DUP	5	5.5	Feet	T	7439976	MERCURY	ND (0.1)	0.1	MG/KG	0
SAM93-10	MIGRATED	537-152	Sediment	SEDIMENT	20-Apr-93	FS	537-152-96	8	8.5	Feet	T	7439976	MERCURY	ND (0.1)	0.1	MG/KG	0
SAM93-10	MIGRATED	537-152	Sediment	SEDIMENT	20-Apr-93	FS	537-152-72	6	6.5	Feet	T	7439976	MERCURY	ND (0.1)	0.1	MG/KG	0
SAM93-10	MIGRATED	537-152	Sediment	SEDIMENT	20-Apr-93	FS	537-152-60	5	5.5	Feet	T	7439976	MERCURY	ND (0.1)	0.1	MG/KG	0
SAM93-10	MIGRATED	537-154	Sediment	SEDIMENT	14-Apr-93	FS	537-154-114	9.5	10	Feet	T	7439976	MERCURY	ND (0.1)	0.1	MG/KG	0
SAM93-10	MIGRATED	537-154	Sediment	SEDIMENT	14-Apr-93	FS	537-154-60	5	5.5	Feet	T	7439976	MERCURY	ND (0.1)	0.1	MG/KG	0
SAM93-10	MIGRATED	537-154	Sediment	SEDIMENT	14-Apr-93	FS	537-154-60	5	5.5	Feet	T	7439976	MERCURY	ND (0.1)	0.1	MG/KG	0
SAM93-10	MIGRATED	537-154	Sediment	SEDIMENT	14-Apr-93	FS	537-154-96	8	8.5	Feet	T	7439976	MERCURY	ND (0.1)	0.1	MG/KG	0
SAM93-10	MIGRATED	537-154	Sediment	SEDIMENT	14-Apr-93	FS	537-154-72	6	6.5	Feet	T	7439976	MERCURY	ND (0.1)	0.1	MG/KG	0
SAM93-10	MIGRATED	537-155	Sediment	SEDIMENT	13-Apr-93	FS	537-155-72	6	6.5	Feet	T	7439976	MERCURY	ND (0.1)	0.1	MG/KG	0
SAM93-10	MIGRATED	537-155	Sediment	SEDIMENT	13-Apr-93	FS	537-155-60	5	5.5	Feet	T	7439976	MERCURY	ND (0.1)	0.1	MG/KG	0
SAM93-10	MIGRATED	537-158	Sediment	SEDIMENT	13-Apr-93	FS	537-158-36	3	3.5	Feet	T	7439976	MERCURY	ND (0.1)	0.1	MG/KG	0
SAM93-10	MIGRATED	537-158	Sediment	SEDIMENT	13-Apr-93	FS	537-158-60	5	5.5	Feet	T	7439976	MERCURY	ND (0.1)	0.1	MG/KG	0
SAM93-10	MIGRATED	537-158	Sediment	SEDIMENT	13-Apr-93	FS	537-158-60	5	5.5	Feet	T	7439976	MERCURY	ND (0.1)	0.1	MG/KG	0
SAM93-10	MIGRATED	537-159	Sediment	SEDIMENT	13-Apr-93	FS	537-159-36	3	3.5	Feet	T	7439976	MERCURY	ND (0.1)	0.1	MG/KG	0
SAM93-10	MIGRATED	537-159	Sediment	SEDIMENT	13-Apr-93	FS	537-159-60	5	5.5	Feet	T	7439976	MERCURY	ND (0.1)	0.1	MG/KG	0
SAM90-20	MIGRATED	537-17	Sediment	SEDIMENT	09-Jun-90	FS	537-17-70	5.8	6.3	Feet	T	7439976	MERCURY	ND (0.11)	0.11	MG/KG	0
SAM90-20	MIGRATED	537-22	Sediment	SEDIMENT	09-Jun-90	FS	537-22-73	6.1	6.6	Feet	T	7439976	MERCURY	ND (0.11)	0.11	MG/KG	0
SAM90-20	MIGRATED	537-30	Sediment	SEDIMENT	11-Jun-90	FS	537-30-66	5	0.5	Feet	T	7439976	MERCURY	ND (0.11)	0.11	MG/KG	0
SAM90-20	MIGRATED	537-48	Sediment	SEDIMENT	12-Jun-90	FS	537-48-90	7.5	8	Feet	T	7439976	MERCURY	ND (0.11)	0.11	MG/KG	0
SAM90-20	MIGRATED	537-8	Sediment	SEDIMENT	08-Jun-90	FS	537-8-90	7.5	8	Feet	T	7439976	MERCURY	ND (0.11)	0.11	MG/KG	0
SAM90-20	MIGRATED	537-9	Sediment	SEDIMENT	07-Jun-90	FS	537-9-58	4.8	5.3	Feet	T	7439976	MERCURY	ND (0.11)	0.11	MG/KG	0
SAM90-38	MIGRATED	537-16	Sediment	SEDIMENT	18-Sep-90	FS	537-16-72	6	6.5	Feet	T	7439976	MERCURY	ND (0.11)	0.11	MG/KG	0
SAM90-41	MIGRATED	537-135	Sediment	SEDIMENT	02-Oct-90	FS	537-135-96	8	8.5	Feet	T	7439976	MERCURY	ND (0.11)	0.11	MG/KG	0
SAM90-20	MIGRATED	537-10	Sediment	SEDIMENT	08-Jun-90	FS	537-10-48	4	4.5	Feet	T	7439976	MERCURY	ND (0.12)	0.12	MG/KG	0
SAM90-20	MIGRATED	537-12	Sediment	SEDIMENT	08-Jun-90	DUP	537-12-60DUP	5	5	Feet	T	7439976	MERCURY	ND (0.12)	0.12	MG/KG	0
SAM90-20	MIGRATED	537-14	Sediment	SEDIMENT	07-Jun-90	FS	537-14-62	5.2	5.7	Feet	T	7439976	MERCURY	ND (0.12)	0.12	MG/KG	0
SAM90-20	MIGRATED	537-19	Sediment	SEDIMENT	08-Jun-90	FS	537-19-49	4.1	4.6	Feet	T	7439976	MERCURY	ND (0.12)	0.12	MG/KG	0
SAM90-20	MIGRATED	537-20	Sediment	SEDIMENT	08-Jun-90	FS	537-20-68	5.6	6.1	Feet	T	7439976	MERCURY	ND (0.12)	0.12	MG/KG	0
SAM90-20	MIGRATED	537-22	Sediment	SEDIMENT	09-Jun-90	FS	537-22-48	4	4.5	Feet	T	7439976	MERCURY	ND (0.12)	0.12	MG/KG	0
SAM90-20	MIGRATED	537-25	Sediment	SEDIMENT	11-Jun-90	FS	537-25-74	6.1	6.6	Feet	T	7439976	MERCURY	ND (0.12)	0.12	MG/KG	0
SAM90-20	MIGRATED	537-26	Sediment	SEDIMENT	11-Jun-90	FS	537-26-59	4.9	5.5	Feet	T	7439976	MERCURY	ND (0.12)	0.12	MG/KG	0
SAM90-20	MIGRATED	537-26	Sediment	SEDIMENT	11-Jun-90	FS	537-26-65	5.4	5.9	Feet	T	7439976	MERCURY	ND (0.12)	0.12	MG/KG	0
SAM90-20	MIGRATED	537-30	Sediment	SEDIMENT	11-Jun-90	FS	537-30-36	3	3.5	Feet	T	7439976	MERCURY	ND (0.12)	0.12	MG/KG	0
SAM90-20	MIGRATED	537-31	Sediment	SEDIMENT	12-Jun-90	FS	537-31-24	2	2.5	Feet	T	7439976	MERCURY	ND (0.12)	0.12	MG/KG	0
SAM90-20	MIGRATED	537-31	Sediment	SEDIMENT	12-Jun-90	FS	537-31-48	4	4.5	Feet	T	7439976	MERCURY	ND (0.12)	0.12	MG/KG	0
SAM90-20	MIGRATED	537-32	Sediment	SEDIMENT	12-Jun-90	FS	537-32-24	2	2.5	Feet	T	7439976	MERCURY	ND (0.12)	0.12	MG/KG	0
SAM90-20	MIGRATED	537-37	Sediment	SEDIMENT	14-Jun-90	FS	537-37-68	5.6	6.1	Feet	T	7439976	MERCURY	ND (0.12)	0.12	MG/KG	0
SAM90-20	MIGRATED	537-39	Sediment	SEDIMENT	12-Jun-90	FS	537-39-64	5.3	5.8	Feet	T	7439976	MERCURY	ND (0.12)	0.12	MG/KG	0
SAM90-20	MIGRATED	537-48	Sediment	SEDIMENT	12-Jun-90	FS	537-48-66	5.5	6	Feet	T	7439976	MERCURY	ND (0.12)	0.12	MG/KG	0
SAM90-26	MIGRATED	537-133	Sediment	SEDIMENT	03-Oct-90	FS	537-133-18	1.5	2	Feet	T	7439976	MERCURY	ND (0.12)	0.12	MG/KG	0
SAM90-38	MIGRATED	537-107A	Sediment	SEDIMENT	27-Sep-90	FS	537-107-18	1.5	2	Feet	T	7439976	MERCURY	ND (0.12)	0.12	MG/KG	0
SAM90-38	MIGRATED	537-108A	Sediment	SEDIMENT	27-Sep-90	FS	537-108-18	1.5	2	Feet	T	7439976	MERCURY	ND (0.12)	0.12	MG/KG	0
SAM90-38	MIGRATED	537-110	Sediment	SEDIMENT	27-Sep-90	FS	537-110-18	1.5	2	Feet	T	7439976	MERCURY	ND (0.12)	0.12	MG/KG	0
SAM90-38	MIGRATED	537-115	Sediment	SEDIMENT	27-Sep-90	FS	537-115-18	1.5	2	Feet	T	7439976	MERCURY	ND (0.12)	0.12	MG/KG	0
SAM90-38	MIGRATED	537-117	Sediment	SEDIMENT	28-Sep-90	FS	537-117-18	1.5	2	Feet	T	7439976	MERCURY	ND (0.12)	0.12	MG/KG	0
SAM90-38	MIGRATED	537-118	Sediment	SEDIMENT	28-Sep-90	FS	537-118-18	1.5	2	Feet	T	7439976	MERCURY	ND (0.12)	0.12	MG/KG	0
SAM90-38	MIGRATED	537-120	Sediment	SEDIMENT	28-Sep-90	FS	537-120-18	1.5	2	Feet	T	7439976	MERCURY	ND (0.12)	0.12	MG/KG	0
SAM90-38	MIGRATED	537-121	Sediment	SEDIMENT	28-Sep-90	FS	537-121-18	1.5	2	Feet	T	7439976	MERCURY	ND (0.12)	0.12	MG/KG	0
SAM90-38	MIGRATED	537-128	Sediment	SEDIMENT	28-Sep-90	FS	537-128-18	1.5	2	Feet	T	7439976	MERCURY	ND (0.12)	0.12	MG/KG	0
SAM90-38	MIGRATED	537-129	Sediment	SEDIMENT	28-Sep-90	FS	537-129-18	1.5	2	Feet	T	7439976	MERCURY	ND (0.12)	0.12	MG/KG	0
SAM90-38	MIGRATED	537-138	Sediment	SEDIMENT	19-Sep-90	FS	537-138-114	9.5	10	Feet	T	7439976	MERCURY	ND (0.12)	0.12	MG/KG	0
SAM90-38	MIGRATED	537-16	Sediment	SEDIMENT	18-Sep-90	FS	537-16-114	114	120	Feet	T	7439976	MERCURY	ND (0.12)	0.12	MG/KG	0
SAM90-38	MIGRATED	537-64	Sediment	SEDIMENT	21-Sep-90	FS	537-64-18	1.5	2	Feet	T	7439976	MERCURY	ND (0.12)	0.12	MG/KG	0
SAM90-38	MIGRATED	537-68	Sediment	SEDIMENT	24-Sep-90	FS	537-68-36	3	3.5	Feet	T	7439976	MERCURY	ND (0.12)	0.12	MG/KG	0
SAM90-38	MIGRATED	537-68	Sediment	SEDIMENT	24-Sep-90	FS	537-68-18	1.5	2	Feet	T	7439976	MERCURY	ND (0.12)	0.12	MG/KG	0
SAM90-38	MIGRATED	537-70	Sediment	SEDIMENT	24-Sep-90	FS	537-70-18	1.5	2	Feet	T	7439976	MERCURY	ND (0.12)	0.12	MG/KG	0
SAM90-38	MIGRATED	537-71	Sediment	SEDIMENT	25-Sep-90	FS	537-71-18	1.5	2	Feet	T	7439976	MERCURY	ND (0.12)	0.12	MG/KG	0
SAM90-38	MIGRATED	537-72	Sediment	SEDIMENT	25-Sep-90	FS	537-72-18	1.5	2	Feet	T	7439976	MERCURY	ND (0.12)	0.12	MG/KG	0
SAM90-38	MIGRATED	537-73	Sediment	SEDIMENT	25-Sep-90	FS	537-73-18	1.5	2	Feet	T	7439976	MERCURY	ND (0.12)	0.12	MG/KG	0
SAM90-38	MIGRATED	537-74</															

**Attachment 2
Pompton Lakes Sediment Concentrations**

PROJECT	STATUS	SRCNAME	THEME	SAMPLE_MATRIX	DATESMPL	SMPLT	SAMPLE_NUMBER	TOP	BOTTOM	DepthUnit	FILTERED	CASNO	ANALYTE	RsltPost	RsltVal	UNITS	Hlt
SAM90-20	MIGRATED	537-51	Sediment	SEDIMENT	12-Jun-90	FS	537-51-66	5.5	6	Feet	T	7439976	MERCURY	0.13	0.13	MG/KG	1
SAM90-20	MIGRATED	537-7	Sediment	SEDIMENT	07-Jun-90	FS	537-7-57	4.75	5.25	Feet	T	7439976	MERCURY	ND (0.13)	0.13	MG/KG	0
SAM90-38	MIGRATED	537-114	Sediment	SEDIMENT	28-Sep-90	FS	537-114-18	1.5	2	Feet	T	7439976	MERCURY	ND (0.13)	0.13	MG/KG	0
SAM90-38	MIGRATED	537-122	Sediment	SEDIMENT	28-Sep-90	FS	537-122-18	1.5	2	Feet	T	7439976	MERCURY	ND (0.13)	0.13	MG/KG	0
SAM90-38	MIGRATED	537-122	Sediment	SEDIMENT	28-Sep-90	DUP	537-122-18DUP	1.5	18	Feet	T	7439976	MERCURY	ND (0.13)	0.13	MG/KG	0
SAM90-38	MIGRATED	537-124	Sediment	SEDIMENT	28-Sep-90	FS	537-124-18	1.5	2	Feet	T	7439976	MERCURY	ND (0.13)	0.13	MG/KG	0
SAM90-38	MIGRATED	537-127	Sediment	SEDIMENT	28-Sep-90	FS	537-127-18	1.5	2	Feet	T	7439976	MERCURY	0.13	0.13	MG/KG	1
SAM90-38	MIGRATED	537-54	Sediment	SEDIMENT	20-Sep-90	DUP	537-54-36DUP	3	3.5	Feet	T	7439976	MERCURY	ND (0.13)	0.13	MG/KG	0
SAM90-38	MIGRATED	537-66	Sediment	SEDIMENT	21-Sep-90	FS	537-66-18	1.5	2	Feet	T	7439976	MERCURY	ND (0.13)	0.13	MG/KG	0
SAM90-38	MIGRATED	537-79	Sediment	SEDIMENT	25-Sep-90	FS	537-79-96	8	8.5	Feet	T	7439976	MERCURY	ND (0.13)	0.13	MG/KG	0
SAM90-38	MIGRATED	537-79	Sediment	SEDIMENT	25-Sep-90	FS	537-79-60	5	5.5	Feet	T	7439976	MERCURY	ND (0.13)	0.13	MG/KG	0
SAM90-38	MIGRATED	537-80	Sediment	SEDIMENT	25-Sep-90	FS	537-80-36	3	3.5	Feet	T	7439976	MERCURY	ND (0.13)	0.13	MG/KG	0
SAM90-41	MIGRATED	537-141	Sediment	SEDIMENT	08-Oct-90	FS	537-141-96	8	8.5	Feet	T	7439976	MERCURY	ND (0.13)	0.13	MG/KG	0
SAM90-20	MIGRATED	537-31	Sediment	SEDIMENT	12-Jun-90	FS	537-31-12	1	1.5	Feet	T	7439976	MERCURY	ND (0.14)	0.14	MG/KG	0
SAM90-38	MIGRATED	537-125	Sediment	SEDIMENT	28-Sep-90	FS	537-125-18	1.5	2	Feet	T	7439976	MERCURY	0.14	0.14	MG/KG	1
SAM90-38	MIGRATED	537-16	Sediment	SEDIMENT	18-Sep-90	FS	537-16-96	8	8.5	Feet	T	7439976	MERCURY	ND (0.14)	0.14	MG/KG	0
SAM90-38	MIGRATED	537-54	Sediment	SEDIMENT	20-Sep-90	FS	537-54-36	3	3.5	Feet	T	7439976	MERCURY	0.14	0.14	MG/KG	1
SAM90-38	MIGRATED	537-65	Sediment	SEDIMENT	21-Sep-90	FS	537-65-18	1.5	2	Feet	T	7439976	MERCURY	ND (0.14)	0.14	MG/KG	0
SAM90-38	MIGRATED	537-72	Sediment	SEDIMENT	25-Sep-90	FS	537-72-0	0	0.5	Feet	T	7439976	MERCURY	ND (0.14)	0.14	MG/KG	0
SAM90-41	MIGRATED	537-130	Sediment	SEDIMENT	04-Oct-90	FS	537-130-18	1.5	2	Feet	T	7439976	MERCURY	ND (0.14)	0.14	MG/KG	0
SAM90-38	MIGRATED	537-121	Sediment	SEDIMENT	28-Sep-90	FS	537-121-0	0	0.5	Feet	T	7439976	MERCURY	ND (0.15)	0.15	MG/KG	0
SAM90-41	MIGRATED	537-131	Sediment	SEDIMENT	04-Oct-90	FS	537-131-18	1.5	2	Feet	T	7439976	MERCURY	ND (0.15)	0.15	MG/KG	0
SAM90-20	MIGRATED	537-17	Sediment	SEDIMENT	09-Jun-90	FS	537-17-48	4	4.5	Feet	T	7439976	MERCURY	0.16	0.16	MG/KG	1
SAM90-20	MIGRATED	537-18	Sediment	SEDIMENT	09-Jun-90	FS	537-18-12	1	1.5	Feet	T	7439976	MERCURY	0.17	0.17	MG/KG	1
SAM90-20	MIGRATED	537-20	Sediment	SEDIMENT	08-Jun-90	FS	537-20-38	3.2	3.7	Feet	T	7439976	MERCURY	0.17	0.17	MG/KG	1
SAM90-20	MIGRATED	537-26	Sediment	SEDIMENT	11-Jun-90	FS	537-26-47	3.9	4.5	Feet	T	7439976	MERCURY	ND (0.17)	0.17	MG/KG	0
SAM90-20	MIGRATED	537-28	Sediment	SEDIMENT	11-Jun-90	FS	537-28-38	3.1	3.6	Feet	T	7439976	MERCURY	0.17	0.17	MG/KG	1
SAM90-20	MIGRATED	537-29	Sediment	SEDIMENT	11-Jun-90	FS	537-29-18	1.5	2	Feet	T	7439976	MERCURY	ND (0.18)	0.18	MG/KG	0
SAM90-20	MIGRATED	537-39	Sediment	SEDIMENT	12-Jun-90	FS	537-39-40	3.3	3.8	Feet	T	7439976	MERCURY	0.18	0.18	MG/KG	1
SAM90-38	MIGRATED	537-73	Sediment	SEDIMENT	25-Sep-90	DUP	537-73-18DUP	1.5	2	Feet	T	7439976	MERCURY	0.18	0.18	MG/KG	1
SAM90-20	MIGRATED	537-22	Sediment	SEDIMENT	09-Jun-90	FS	537-22-30	2.5	3	Feet	T	7439976	MERCURY	0.19	0.19	MG/KG	1
SAM90-20	MIGRATED	537-23	Sediment	SEDIMENT	09-Jun-90	FS	537-23-48	4	4.5	Feet	T	7439976	MERCURY	0.19	0.19	MG/KG	1
SAM90-38	MIGRATED	537-106	Sediment	SEDIMENT	27-Sep-90	FS	537-106-18	1.5	2	Feet	T	7439976	MERCURY	0.19	0.19	MG/KG	1
SAM90-38	MIGRATED	537-123	Sediment	SEDIMENT	28-Sep-90	FS	537-123-18	1.5	2	Feet	T	7439976	MERCURY	0.19	0.19	MG/KG	1
SAM90-38	MIGRATED	537-126	Sediment	SEDIMENT	28-Sep-90	FS	537-126-0	0	0.5	Feet	T	7439976	MERCURY	ND (0.19)	0.19	MG/KG	0
SAM90-38	MIGRATED	537-127	Sediment	SEDIMENT	28-Sep-90	DUP	537-127-18DUP	1.5	18	Feet	T	7439976	MERCURY	0.2	0.2	MG/KG	1
SAM90-38	MIGRATED	537-82	Sediment	SEDIMENT	26-Sep-90	FS	537-82-18	1.5	2	Feet	T	7439976	MERCURY	0.2	0.2	MG/KG	1
SAM90-38	MIGRATED	537-86	Sediment	SEDIMENT	26-Sep-90	FS	537-86-18	1.5	2	Feet	T	7439976	MERCURY	0.2	0.2	MG/KG	1
SAM93-10	MIGRATED	537-151	Sediment	SEDIMENT	12-Apr-93	FS	537-151-36	3	3.5	Feet	T	7439976	MERCURY	ND (0.2)	0.2	MG/KG	0
SAM90-20	MIGRATED	537-24	Sediment	SEDIMENT	09-Jun-90	FS	537-24-48	4	4.5	Feet	T	7439976	MERCURY	0.21	0.21	MG/KG	1
SAM90-38	MIGRATED	537-109	Sediment	SEDIMENT	27-Sep-90	FS	537-109-18	1.5	2	Feet	T	7439976	MERCURY	0.21	0.21	MG/KG	1
SAM90-38	MIGRATED	537-110	Sediment	SEDIMENT	27-Sep-90	FS	537-110-0	0	0.5	Feet	T	7439976	MERCURY	0.21	0.21	MG/KG	1
SAM90-38	MIGRATED	537-112	Sediment	SEDIMENT	27-Sep-90	FS	537-112-18	1.5	2	Feet	T	7439976	MERCURY	0.21	0.21	MG/KG	1
SAM90-41	MIGRATED	537-136	Sediment	SEDIMENT	02-Oct-90	FS	537-136-60	5	5.5	Feet	T	7439976	MERCURY	0.21	0.21	MG/KG	1
SAM90-20	MIGRATED	537-18	Sediment	SEDIMENT	09-Jun-90	FS	537-18-48	4	4.5	Feet	T	7439976	MERCURY	0.22	0.22	MG/KG	1
SAM90-38	MIGRATED	537-118	Sediment	SEDIMENT	28-Sep-90	FS	537-118-0	0	0.5	Feet	T	7439976	MERCURY	0.23	0.23	MG/KG	1
SAM90-38	MIGRATED	537-61	Sediment	SEDIMENT	24-Sep-90	FS	537-61-36	3	3.5	Feet	T	7439976	MERCURY	0.23	0.23	MG/KG	1
SAM90-38	MIGRATED	537-96	Sediment	SEDIMENT	26-Sep-90	FS	537-96-18	1.5	2	Feet	T	7439976	MERCURY	0.24	0.24	MG/KG	1
SAM90-38	MIGRATED	537-73	Sediment	SEDIMENT	25-Sep-90	FS	537-73-36	3	3.5	Feet	T	7439976	MERCURY	0.25	0.25	MG/KG	1
SAM90-38	MIGRATED	537-89	Sediment	SEDIMENT	26-Sep-90	FS	537-89-18	1.5	2	Feet	T	7439976	MERCURY	0.25	0.25	MG/KG	1
SAM90-20	MIGRATED	537-32	Sediment	SEDIMENT	12-Jun-90	FS	537-32-48	4	4.5	Feet	T	7439976	MERCURY	0.26	0.26	MG/KG	1
SAM90-38	MIGRATED	537-138	Sediment	SEDIMENT	19-Sep-90	FS	537-138-96	8	8.5	Feet	T	7439976	MERCURY	0.26	0.26	MG/KG	1
SAM90-20	MIGRATED	537-51	Sediment	SEDIMENT	12-Jun-90	FS	537-51-72	6	6.5	Feet	T	7439976	MERCURY	0.27	0.27	MG/KG	1
SAM90-41	MIGRATED	537-143	Sediment	SEDIMENT	05-Oct-90	FS	537-1431-96	8	8.5	Feet	T	7439976	MERCURY	0.27	0.27	MG/KG	1
SAM90-38	MIGRATED	537-55	Sediment	SEDIMENT	20-Sep-90	FS	537-55-0	0	0.5	Feet	T	7439976	MERCURY	ND (0.28)	0.28	MG/KG	0
SAM90-41	MIGRATED	537-139	Sediment	SEDIMENT	11-Oct-90	FS	537-139-114	9.5	10	Feet	T	7439976	MERCURY	0.28	0.28	MG/KG	1
SAM90-20	MIGRATED	537-19	Sediment	SEDIMENT	08-Jun-90	FS	537-19-39	3.25	3.75	Feet	T	7439976	MERCURY	0.29	0.29	MG/KG	1
SAM90-20	MIGRATED	537-6	Sediment	SEDIMENT	07-Jun-90	FS	537-6-62	5.1	5.6	Feet	T	7439976	MERCURY	0.29	0.29	MG/KG	1
SAM90-38	MIGRATED	537-9	Sediment	SEDIMENT	19-Sep-90	FS	537-9-96	8	8.5	Feet	T	7439976	MERCURY	0.29	0.29	MG/KG	1
SAM90-20	MIGRATED	537-47	Sediment	SEDIMENT	15-Jun-90	FS	537-47-68	5.6	7.1	Feet	T	7439976	MERCURY	ND (0.3)	0.3	MG/KG	0
SAM90-38	MIGRATED	537-59	Sediment	SEDIMENT	21-Sep-90	FS	537-59-18	1.5	2	Feet	T	7439976	MERCURY	0.3	0.3	MG/KG	1
SAM90-38	MIGRATED	537-63	Sediment	SEDIMENT	21-Sep-90	DUP	537-63-18DUP	1.5	2	Feet	T	7439976	MERCURY	0.3	0.3	MG/KG	1
SAM90-38	MIGRATED	537-81	Sediment	SEDIMENT	26-Sep-90	FS	537-81-18	1.5	2	Feet	T	7439976	MERCURY	0.3	0.3	MG/KG	1
SAM90-38	MIGRATED	537-87	Sediment	SEDIMENT	26-Sep-90	FS	537-87-18	1.5	2	Feet	T	7439976	MERCURY	0.3	0.3	MG/KG	1
SAM93-10	MIGRATED	537-155	Sediment	SEDIMENT	13-Apr-93	FS	537-155-36	3	3.5	Feet	T	7439976	MERCURY	0.3	0.3	MG/KG	1
SAM90-41	MIGRATED	537-141	Sediment	SEDIMENT	08-Oct-90	FS	537-141-114	9.5	10	Feet	T	7439976	MERCURY	0.31	0.31	MG/KG	1
SAM90-38	MIGRATED	537-116	Sediment	SEDIMENT	28-Sep-90	FS	537-116-18	1.5	2	Feet	T	7439976	MERCURY	0.32	0.32	MG/KG	1
SAM90-38	MIGRATED	537-67	Sediment	SEDIMENT	24-Sep-90	FS	537-67-18	1.5	2	Feet	T	7439976	MERCURY	0.32	0.32	MG/KG	1
SAM90-20	MIGRATED	537-8	Sediment	SEDIMENT	08-Jun-90	FS	537-8-42	3.5	4	Feet	T	7439976	MERCURY	0.33	0.33	MG/KG	1
SAM90-20	MIGRATED	537-29	Sediment	SEDIMENT	11-Jun-90	FS	537-29-0	0	0.5	Feet	T	7439976	MERCURY	0.35	0.35	MG/KG	1
SAM90-20	MIGRATED	537-18	Sediment	SEDIMENT	09-Jun-90	DUP	537-18-48DUP	4	4	Feet	T	7439976	MERCURY	0.36	0.36	MG/KG	1
SAM90-20	MIGRATED	537-49	Sediment	SEDIMENT	12-Jun-90	FS	537-49-72	6	6.5	Feet	T	7439976	MERCURY	0.36	0.36	MG/KG	1
SAM90-20	MIGRATED	537-138	Sediment	SEDIMENT	11-Jun-90	FS	537-138-86	7.1	7.6	Feet	T	7439976	MERCURY	0.37	0.37	MG/KG	1
SAM90-20	MIGRATED	537-20	Sediment	SEDIMENT	08-Jun-90	FS	537-20-44	3.6	4.1	Feet	T	7439976	MERCURY	0.37	0.37	MG/KG	1
SAM90-41	MIGRATED	537-33	Sediment	SEDIMENT	11-Oct-90	FS	537-33-96	8	8.5	Feet	T	7439976	MERCURY	0.37	0.37	MG/KG	1
SAM90-20	MIGRATED	537-10	Sediment	SEDIMENT	08-Jun-90	FS	537-10-72	6	6.5	Feet	T	7439976	MERCURY	0.39	0.39	MG/KG	1
SAM90-20	MIGRATED	537-29	Sediment	SEDIMENT	11-Jun-90	FS	537-29-66	5	0.5								

**Attachment 2
Pompton Lakes Sediment Concentrations**

PROJECT	STATUS	SRCNAME	THEME	SAMPLE_MATRIX	DATESMPL	SMPLT	SAMPLE_NUMBER	TOP	BOTTOM	DepthUnit	FILTERED	CASNO	ANALYTE	RsltPost	RsltVal	UNITS	Hlt
SAM90-20	MIGRATED	537-18	Sediment	SEDIMENT	09-Jun-90	FS	537-18-24	2	2.5	Feet	T	7439976	MERCURY	0.45	0.45	MG/KG	1
SAM90-38	MIGRATED	537-101	Sediment	SEDIMENT	27-Sep-90	FS	537-101-18	1.5	2	Feet	T	7439976	MERCURY	0.45	0.45	MG/KG	1
SAM90-38	MIGRATED	537-56	Sediment	SEDIMENT	21-Sep-90	FS	537-56-18	1.5	2	Feet	T	7439976	MERCURY	0.46	0.46	MG/KG	1
SAM90-38	MIGRATED	537-57	Sediment	SEDIMENT	21-Sep-90	FS	537-57-18	1.5	2	Feet	T	7439976	MERCURY	0.46	0.46	MG/KG	1
SAM93-10	MIGRATED	537-157	Sediment	SEDIMENT	23-Apr-93	FS	537-157-12	1	1.5	Feet	T	7439976	MERCURY	0.46	0.46	MG/KG	1
SAM90-20	MIGRATED	537-49	Sediment	SEDIMENT	12-Jun-90	FS	537-49-66	5.5	6	Feet	T	7439976	MERCURY	0.48	0.48	MG/KG	1
SAM90-20	MIGRATED	537-30	Sediment	SEDIMENT	11-Jun-90	FS	537-30-0	0	0.5	Feet	T	7439976	MERCURY	0.5	0.5	MG/KG	1
SAM93-10	MIGRATED	537-107B	Sediment	SEDIMENT	22-Apr-93	FS	537-107-60	5	5.5	Feet	T	7439976	MERCURY	ND (0.5)	0.5	MG/KG	0
SAM93-10	MIGRATED	537-145	Sediment	SEDIMENT	16-Apr-93	FS	537-145-96	8	8.5	Feet	T	7439976	MERCURY	ND (0.5)	0.5	MG/KG	0
SAM93-10	MIGRATED	537-145	Sediment	SEDIMENT	16-Apr-93	FS	537-145-114	9.5	10	Feet	T	7439976	MERCURY	ND (0.5)	0.5	MG/KG	0
SAM93-10	MIGRATED	537-145	Sediment	SEDIMENT	16-Apr-93	FS	537-145-72	6	6.5	Feet	T	7439976	MERCURY	ND (0.5)	0.5	MG/KG	0
SAM93-10	MIGRATED	537-146	Sediment	SEDIMENT	19-Apr-93	FS	537-146-60	5	5.5	Feet	T	7439976	MERCURY	ND (0.5)	0.5	MG/KG	0
SAM93-10	MIGRATED	537-146	Sediment	SEDIMENT	19-Apr-93	FS	537-146-114	9.5	10	Feet	T	7439976	MERCURY	ND (0.5)	0.5	MG/KG	0
SAM93-10	MIGRATED	537-146	Sediment	SEDIMENT	19-Apr-93	FS	537-146-72	6	6.5	Feet	T	7439976	MERCURY	ND (0.5)	0.5	MG/KG	0
SAM93-10	MIGRATED	537-146	Sediment	SEDIMENT	19-Apr-93	FS	537-146-96	8	8.5	Feet	T	7439976	MERCURY	ND (0.5)	0.5	MG/KG	0
SAM93-10	MIGRATED	537-147	Sediment	SEDIMENT	20-Apr-93	FS	537-147-114	9.5	10	Feet	T	7439976	MERCURY	ND (0.5)	0.5	MG/KG	0
SAM93-10	MIGRATED	537-147	Sediment	SEDIMENT	20-Apr-93	FS	537-147-72	6	6.5	Feet	T	7439976	MERCURY	ND (0.5)	0.5	MG/KG	0
SAM93-10	MIGRATED	537-147	Sediment	SEDIMENT	20-Apr-93	FS	537-147-60	5	5.5	Feet	T	7439976	MERCURY	ND (0.5)	0.5	MG/KG	0
SAM93-10	MIGRATED	537-148	Sediment	SEDIMENT	19-Apr-93	FS	537-148-60	5	5.5	Feet	T	7439976	MERCURY	ND (0.5)	0.5	MG/KG	0
SAM93-10	MIGRATED	537-148	Sediment	SEDIMENT	19-Apr-93	FS	537-148-72	6	6.5	Feet	T	7439976	MERCURY	ND (0.5)	0.5	MG/KG	0
SAM93-10	MIGRATED	537-149	Sediment	SEDIMENT	21-Apr-93	FS	537-149-60	5	5.5	Feet	T	7439976	MERCURY	ND (0.5)	0.5	MG/KG	0
SAM93-10	MIGRATED	537-149	Sediment	SEDIMENT	21-Apr-93	DUP	537-149-72DUP	6	6.5	Feet	T	7439976	MERCURY	ND (0.5)	0.5	MG/KG	0
SAM93-10	MIGRATED	537-149	Sediment	SEDIMENT	21-Apr-93	FS	537-149-96	8	8.5	Feet	T	7439976	MERCURY	ND (0.5)	0.5	MG/KG	0
SAM93-10	MIGRATED	537-149	Sediment	SEDIMENT	21-Apr-93	FS	537-149-72	6	6.5	Feet	T	7439976	MERCURY	ND (0.5)	0.5	MG/KG	0
SAM93-10	MIGRATED	537-150	Sediment	SEDIMENT	21-Apr-93	FS	537-150-72	6	6.5	Feet	T	7439976	MERCURY	ND (0.5)	0.5	MG/KG	0
SAM93-10	MIGRATED	537-150	Sediment	SEDIMENT	21-Apr-93	FS	537-150-36	3	3.5	Feet	T	7439976	MERCURY	ND (0.5)	0.5	MG/KG	0
SAM93-10	MIGRATED	537-150	Sediment	SEDIMENT	21-Apr-93	FS	537-150-96	8	8.5	Feet	T	7439976	MERCURY	ND (0.5)	0.5	MG/KG	0
SAM93-10	MIGRATED	537-150	Sediment	SEDIMENT	21-Apr-93	FS	537-150-114	9.5	10	Feet	T	7439976	MERCURY	ND (0.5)	0.5	MG/KG	0
SAM93-10	MIGRATED	537-153	Sediment	SEDIMENT	21-Apr-93	FS	537-153-114	9.5	10	Feet	T	7439976	MERCURY	ND (0.5)	0.5	MG/KG	0
SAM93-10	MIGRATED	537-153	Sediment	SEDIMENT	21-Apr-93	FS	537-153-72	6	6.5	Feet	T	7439976	MERCURY	ND (0.5)	0.5	MG/KG	0
SAM93-10	MIGRATED	537-153	Sediment	SEDIMENT	21-Apr-93	FS	537-153-96	8	8.5	Feet	T	7439976	MERCURY	ND (0.5)	0.5	MG/KG	0
SAM93-10	MIGRATED	537-153	Sediment	SEDIMENT	21-Apr-93	FS	537-153-60	5	5.5	Feet	T	7439976	MERCURY	ND (0.5)	0.5	MG/KG	0
SAM93-10	MIGRATED	537-156	Sediment	SEDIMENT	20-Apr-93	FS	537-156-96	8	8.5	Feet	T	7439976	MERCURY	ND (0.5)	0.5	MG/KG	0
SAM93-10	MIGRATED	537-156	Sediment	SEDIMENT	20-Apr-93	FS	537-156-114	9.5	10	Feet	T	7439976	MERCURY	ND (0.5)	0.5	MG/KG	0
SAM93-10	MIGRATED	537-156	Sediment	SEDIMENT	20-Apr-93	FS	537-156-72	6	6.5	Feet	T	7439976	MERCURY	ND (0.5)	0.5	MG/KG	0
SAM93-10	MIGRATED	537-156	Sediment	SEDIMENT	20-Apr-93	FS	537-156-60	5	5.5	Feet	T	7439976	MERCURY	ND (0.5)	0.5	MG/KG	0
SAM90-20	MIGRATED	537-12	Sediment	SEDIMENT	08-Jun-90	FS	537-12-60	5	5.5	Feet	T	7439976	MERCURY	0.52	0.52	MG/KG	1
SAM90-20	MIGRATED	537-36	Sediment	SEDIMENT	14-Jun-90	FS	537-36-84	7	7.5	Feet	T	7439976	MERCURY	0.52	0.52	MG/KG	1
SAM90-38	MIGRATED	537-63	Sediment	SEDIMENT	21-Sep-90	FS	537-63-18	1.5	2	Feet	T	7439976	MERCURY	0.53	0.53	MG/KG	1
SAM90-38	MIGRATED	537-58	Sediment	SEDIMENT	21-Sep-90	FS	537-58-18	1.5	2	Feet	T	7439976	MERCURY	0.55	0.55	MG/KG	1
SAM90-38	MIGRATED	537-60	Sediment	SEDIMENT	21-Sep-90	FS	537-60-18	1.5	2	Feet	T	7439976	MERCURY	0.55	0.55	MG/KG	1
SAM90-41	MIGRATED	537-139	Sediment	SEDIMENT	11-Oct-90	FS	537-139-96	8	8.5	Feet	T	7439976	MERCURY	0.55	0.55	MG/KG	1
SAM90-38	MIGRATED	537-111	Sediment	SEDIMENT	27-Sep-90	FS	537-111-0	0	0.5	Feet	T	7439976	MERCURY	0.57	0.57	MG/KG	1
SAM90-38	MIGRATED	537-113	Sediment	SEDIMENT	27-Sep-90	FS	537-113-18	1.5	2	Feet	T	7439976	MERCURY	0.57	0.57	MG/KG	1
SAM90-20	MIGRATED	537-13	Sediment	SEDIMENT	08-Jun-90	FS	537-13-84	7	7.5	Feet	T	7439976	MERCURY	0.58	0.58	MG/KG	1
SAM90-38	MIGRATED	537-100	Sediment	SEDIMENT	27-Sep-90	FS	537-100-18	1.5	2	Feet	T	7439976	MERCURY	0.58	0.58	MG/KG	1
SAM90-38	MIGRATED	537-122	Sediment	SEDIMENT	28-Sep-90	FS	537-122-0	0	0.5	Feet	T	7439976	MERCURY	0.58	0.58	MG/KG	1
SAM90-38	MIGRATED	537-77	Sediment	SEDIMENT	25-Sep-90	FS	537-77-0	0	0.5	Feet	T	7439976	MERCURY	0.59	0.59	MG/KG	1
SAM90-38	MIGRATED	537-56	Sediment	SEDIMENT	21-Sep-90	FS	537-56-36	3	3.5	Feet	T	7439976	MERCURY	0.6	0.6	MG/KG	1
SAM93-10	MIGRATED	537-107B	Sediment	SEDIMENT	22-Apr-93	FS	537-107-84	7	7.5	Feet	T	7439976	MERCURY	ND (0.6)	0.6	MG/KG	0
SAM93-10	MIGRATED	537-107B	Sediment	SEDIMENT	22-Apr-93	FS	537-107-72	6	6.5	Feet	T	7439976	MERCURY	ND (0.6)	0.6	MG/KG	0
SAM93-10	MIGRATED	537-146	Sediment	SEDIMENT	19-Apr-93	FS	537-146-114	9.5	10	Feet	T	7439976	MERCURY	ND (0.6)	0.6	MG/KG	0
SAM93-10	MIGRATED	537-147	Sediment	SEDIMENT	20-Apr-93	FS	537-147-96	8	8.5	Feet	T	7439976	MERCURY	ND (0.6)	0.6	MG/KG	0
SAM93-10	MIGRATED	537-148	Sediment	SEDIMENT	19-Apr-93	FS	537-148-96	8	8.5	Feet	T	7439976	MERCURY	ND (0.6)	0.6	MG/KG	0
SAM93-10	MIGRATED	537-148	Sediment	SEDIMENT	19-Apr-93	FS	537-148-114	9.5	10	Feet	T	7439976	MERCURY	ND (0.6)	0.6	MG/KG	0
SAM93-10	MIGRATED	537-150	Sediment	SEDIMENT	21-Apr-93	FS	537-150-114	9.5	10	Feet	T	7439976	MERCURY	0.6	0.6	MG/KG	1
SAM93-10	MIGRATED	537-153	Sediment	SEDIMENT	21-Apr-93	FS	537-153-96	8	8.5	Feet	T	7439976	MERCURY	ND (0.6)	0.6	MG/KG	0
SAM93-10	MIGRATED	537-153	Sediment	SEDIMENT	21-Apr-93	FS	537-153-36	3	3.5	Feet	T	7439976	MERCURY	0.6	0.6	MG/KG	1
SAM93-10	MIGRATED	537-154	Sediment	SEDIMENT	14-Apr-93	FS	537-154-36	3	3.5	Feet	T	7439976	MERCURY	0.6	0.6	MG/KG	1
SAM93-10	MIGRATED	537-156	Sediment	SEDIMENT	20-Apr-93	FS	537-156-114	9.5	10	Feet	T	7439976	MERCURY	ND (0.6)	0.6	MG/KG	0
SAM90-38	MIGRATED	537-111	Sediment	SEDIMENT	27-Sep-90	FS	537-111-18	1.5	2	Feet	T	7439976	MERCURY	0.63	0.63	MG/KG	1
SAM90-20	MIGRATED	537-23	Sediment	SEDIMENT	09-Jun-90	FS	537-23-24	2	2.5	Feet	T	7439976	MERCURY	0.64	0.64	MG/KG	1
SAM90-20	MIGRATED	537-49	Sediment	SEDIMENT	12-Jun-90	FS	537-49-70	5.8	6.3	Feet	T	7439976	MERCURY	0.64	0.64	MG/KG	1
SAM90-41	MIGRATED	537-34	Sediment	SEDIMENT	14-Jun-90	FS	537-34-114	9.5	10	Feet	T	7439976	MERCURY	0.67	0.67	MG/KG	1
SAM90-20	MIGRATED	537-21	Sediment	SEDIMENT	08-Jun-90	FS	537-21-63	5.25	5.75	Feet	T	7439976	MERCURY	0.68	0.68	MG/KG	1
SAM90-38	MIGRATED	537-128	Sediment	SEDIMENT	28-Sep-90	FS	537-128-0	0	0.5	Feet	T	7439976	MERCURY	0.7	0.7	MG/KG	1
SAM93-10	MIGRATED	537-145	Sediment	SEDIMENT	16-Apr-93	FS	537-145-36	3	3.5	Feet	T	7439976	MERCURY	ND (0.7)	0.7	MG/KG	0
SAM90-38	MIGRATED	537-119	Sediment	SEDIMENT	28-Sep-90	FS	537-119-18	1.5	2	Feet	T	7439976	MERCURY	0.71	0.71	MG/KG	1
SAM90-38	MIGRATED	537-92	Sediment	SEDIMENT	26-Sep-90	FS	537-92-18	1.5	2	Feet	T	7439976	MERCURY	ND (0.71)	0.71	MG/KG	0
SAM90-38	MIGRATED	537-101	Sediment	SEDIMENT	27-Sep-90	FS	537-101-0	0	0.5	Feet	T	7439976	MERCURY	ND (0.74)	0.74	MG/KG	0
SAM90-38	MIGRATED	537-79	Sediment	SEDIMENT	25-Sep-90	FS	537-79-36	3	3.5	Feet	T	7439976	MERCURY	0.75	0.75	MG/KG	1
SAM90-38	MIGRATED	537-53	Sediment	SEDIMENT	20-Sep-90	FS	537-53-18	1.5	2	Feet	T	7439976	MERCURY	0.79	0.79	MG/KG	1
SAM90-38	MIGRATED	537-67	Sediment	SEDIMENT	24-Sep-90	FS	537-67-36	3	3.5	Feet	T	7439976	MERCURY	0.8	0.8	MG/KG	1
SAM93-10	MIGRATED	537-146	Sediment	SEDIMENT	19-Apr-93	FS	537-146-36	3	3.5	Feet	T	7439976	MERCURY	ND (0.8)	0.8	MG/KG	0
SAM93-10	MIGRATED	537-158	Sediment	SEDIMENT	13-Apr-93	FS	537-158-12	1	1.5	Feet	T	7439976	MERCURY	0.8	0.8	MG/KG	1
UPL_XRF_537_2003-2004	MIGRATED	537-239	Sediment	SOIL	15-Dec-03	FS	POM-E-537-239-0	0	0.5	Feet	T	7439976	MERCURY	0.814	0.814	MG/KG	1
SAM90-41	MIGRATED	537-141	Sediment	SEDIMENT	08-Oct-90												

**Attachment 2
Pompton Lakes Sediment Concentrations**

PROJECT	STATUS	SRCNAME	THEME	SAMPLE_MATRIX	DATESMPL	SMPLT	SAMPLE_NUMBER	TOP	BOTTOM	DepthUnit	FILTERED	CASNO	ANALYTE	RsltPost	RsltVal	UNITS	Hlt
SAM90-38	MIGRATED	537-75	Sediment	SEDIMENT	25-Sep-90	FS	537-75-0	0	0.5	Feet	T	7439976	MERCURY	1.1	1.1	MG/KG	1
SAM90-38	MIGRATED	537-91	Sediment	SEDIMENT	26-Sep-90	FS	537-91-18	1.5	2	Feet	T	7439976	MERCURY	1.1	1.1	MG/KG	1
SAM90-41	MIGRATED	537-140	Sediment	SEDIMENT	12-Oct-90	FS	537-140-114	9.5	10	Feet	T	7439976	MERCURY	1.1	1.1	MG/KG	1
SAM90-41	MIGRATED	537-41	Sediment	SEDIMENT	11-Oct-90	FS	537-41-96	8	8.5	Feet	T	7439976	MERCURY	1.1	1.1	MG/KG	1
SAM93-10	MIGRATED	537-105B	Sediment	SEDIMENT	23-Apr-93	FS	537-105-36	3	3.5	Feet	T	7439976	MERCURY	ND (1.1)	1.1	MG/KG	0
ABD HG DELIN SAMP RND 1 8/04	DDR	537-275	Sediment	SEDIMENT	03-Aug-04	FS	POM-E-537-275(1.75-2.25)	1.75	2.25	Feet	T	7439976	MERCURY	1.17 J	1.17	MG/KG	1
SAM90-20	MIGRATED	537-35	Sediment	SEDIMENT	15-Jun-90	FS	537-35-100	8.3	8.8	Feet	T	7439976	MERCURY	1.2	1.2	MG/KG	1
SAM90-20	MIGRATED	537-35	Sediment	SEDIMENT	15-Jun-90	FS	537-35-88	7.3	7.8	Feet	T	7439976	MERCURY	1.2	1.2	MG/KG	1
SAM90-38	MIGRATED	537-129	Sediment	SEDIMENT	28-Sep-90	FS	537-129-0	0	0.5	Feet	T	7439976	MERCURY	1.2	1.2	MG/KG	1
SAM90-38	MIGRATED	537-61	Sediment	SEDIMENT	24-Sep-90	FS	537-61-0	0	0.5	Feet	T	7439976	MERCURY	1.2	1.2	MG/KG	1
SAM90-41	MIGRATED	537-136	Sediment	SEDIMENT	02-Oct-90	FS	537-136-96	8	8.5	Feet	T	7439976	MERCURY	1.2	1.2	MG/KG	1
SAM93-10	MIGRATED	537-108B	Sediment	SEDIMENT	23-Apr-93	FS	537-108-72	6	6.5	Feet	T	7439976	MERCURY	ND (1.2)	1.2	MG/KG	0
SAM93-10	MIGRATED	537-157	Sediment	SEDIMENT	23-Apr-93	FS	537-157-72	6	6.5	Feet	T	7439976	MERCURY	ND (1.2)	1.2	MG/KG	0
SAM90-20	MIGRATED	537-15	Sediment	SEDIMENT	09-Jun-90	FS	537-15-0	0	0.5	Feet	T	7439976	MERCURY	1.3	1.3	MG/KG	1
SAM90-20	MIGRATED	537-19	Sediment	SEDIMENT	08-Jun-90	FS	537-19-73	6.1	6.6	Feet	T	7439976	MERCURY	1.3	1.3	MG/KG	1
SAM90-20	MIGRATED	537-51	Sediment	SEDIMENT	12-Jun-90	FS	537-51-0	0	0.5	Feet	T	7439976	MERCURY	1.3	1.3	MG/KG	1
SAM90-20	MIGRATED	537-52	Sediment	SEDIMENT	13-Jun-90	FS	537-52-78	6.5	7	Feet	T	7439976	MERCURY	1.3	1.3	MG/KG	1
SAM90-20	MIGRATED	537-52	Sediment	SEDIMENT	13-Jun-90	FS	537-52-54	4.5	5	Feet	T	7439976	MERCURY	1.3	1.3	MG/KG	1
SAM90-38	MIGRATED	537-102	Sediment	SEDIMENT	27-Sep-90	FS	537-102-18	1.5	2	Feet	T	7439976	MERCURY	1.3	1.3	MG/KG	1
SAM90-38	MIGRATED	537-55	Sediment	SEDIMENT	20-Sep-90	FS	537-55-36	3	3.5	Feet	T	7439976	MERCURY	1.3	1.3	MG/KG	1
SAM90-38	MIGRATED	537-80	Sediment	SEDIMENT	25-Sep-90	FS	537-80-18	1.5	2	Feet	T	7439976	MERCURY	1.3	1.3	MG/KG	1
SAM93-10	MIGRATED	537-108B	Sediment	SEDIMENT	23-Apr-93	FS	537-108-114	9.5	10	Feet	T	7439976	MERCURY	ND (1.3)	1.3	MG/KG	0
SAM93-10	MIGRATED	537-157	Sediment	SEDIMENT	23-Apr-93	FS	537-157-36	3	3.5	Feet	T	7439976	MERCURY	ND (1.3)	1.3	MG/KG	0
SAM90-20	MIGRATED	537-23	Sediment	SEDIMENT	09-Jun-90	FS	537-23-12	1	1.5	Feet	T	7439976	MERCURY	1.4	1.4	MG/KG	1
SAM90-20	MIGRATED	537-28	Sediment	SEDIMENT	11-Jun-90	FS	537-28-66	5	0.5	Feet	T	7439976	MERCURY	1.4	1.4	MG/KG	1
SAM90-20	MIGRATED	537-44	Sediment	SEDIMENT	14-Jun-90	FS	537-44-78	6.5	7	Feet	T	7439976	MERCURY	1.4	1.4	MG/KG	1
SAM90-20	MIGRATED	537-47	Sediment	SEDIMENT	15-Jun-90	FS	537-47-74	6.1	6.6	Feet	T	7439976	MERCURY	1.4	1.4	MG/KG	1
SAM90-41	MIGRATED	537-130	Sediment	SEDIMENT	04-Oct-90	FS	537-130-36	3	3.5	Feet	T	7439976	MERCURY	1.4	1.4	MG/KG	1
SAM90-41	MIGRATED	537-143	Sediment	SEDIMENT	05-Oct-90	DUP	537-1431-36DUP	3	3.5	Feet	T	7439976	MERCURY	1.4	1.4	MG/KG	1
SAM93-10	MIGRATED	537-157	Sediment	SEDIMENT	23-Apr-93	FS	537-157-60	5	5.5	Feet	T	7439976	MERCURY	ND (1.4)	1.4	MG/KG	0
ABD HG DELIN RND 20 4/07	DDR	537-496	Sediment	SEDIMENT	23-Apr-07	FS	POM-E-537-496(0.0-0.5)	0	0.5	Feet	T	7439976	MERCURY	1.45	1.45	MG/KG	1
SAM90-20	MIGRATED	537-11	Sediment	SEDIMENT	08-Jun-90	FS	537-11-24	2	2.5	Feet	T	7439976	MERCURY	1.5	1.5	MG/KG	1
SAM90-20	MIGRATED	537-13	Sediment	SEDIMENT	08-Jun-90	FS	537-13-36	3	3.5	Feet	T	7439976	MERCURY	1.5	1.5	MG/KG	1
SAM90-20	MIGRATED	537-30	Sediment	SEDIMENT	11-Jun-90	FS	537-30-24	2	2.5	Feet	T	7439976	MERCURY	1.5	1.5	MG/KG	1
SAM90-20	MIGRATED	537-37	Sediment	SEDIMENT	25-Jun-90	FS	537-37-6	0.5	1	Feet	T	7439976	MERCURY	1.5	1.5	MG/KG	1
SAM90-20	MIGRATED	537-49	Sediment	SEDIMENT	12-Jun-90	FS	537-49-60	5	5.5	Feet	T	7439976	MERCURY	1.5	1.5	MG/KG	1
SAM90-20	MIGRATED	537-9	Sediment	SEDIMENT	07-Jun-90	FS	537-9-52	4.3	4.8	Feet	T	7439976	MERCURY	1.5	1.5	MG/KG	1
SAM90-38	MIGRATED	537-69	Sediment	SEDIMENT	24-Sep-90	FS	537-69-18	1.5	2	Feet	T	7439976	MERCURY	1.5	1.5	MG/KG	1
SAM90-38	MIGRATED	537-97	Sediment	SEDIMENT	26-Sep-90	FS	537-97-18	1.5	2	Feet	T	7439976	MERCURY	1.5	1.5	MG/KG	1
SAM93-10	MIGRATED	537-152	Sediment	SEDIMENT	20-Apr-93	FS	537-152-36	3	3.5	Feet	T	7439976	MERCURY	1.5	1.5	MG/KG	1
SAM93-10	MIGRATED	537-157	Sediment	SEDIMENT	23-Apr-93	FS	537-157-114	9.5	10	Feet	T	7439976	MERCURY	ND (1.5)	1.5	MG/KG	0
ABD HG DELIN SAMP RND 12 5/06	DDR	537-415	Sediment	SEDIMENT	25-May-06	FS	POM-E-537-415(1.9-2.4)	1.9	2.4	Feet	T	7439976	MERCURY	1.53	1.53	MG/KG	1
SAM90-20	MIGRATED	537-11	Sediment	SEDIMENT	08-Jun-90	FS	537-11-48	4	4.5	Feet	T	7439976	MERCURY	1.6	1.6	MG/KG	1
SAM90-20	MIGRATED	537-7	Sediment	SEDIMENT	07-Jun-90	FS	537-7-81	6.75	7.25	Feet	T	7439976	MERCURY	1.6	1.6	MG/KG	1
SAM90-38	MIGRATED	537-117	Sediment	SEDIMENT	28-Sep-90	FS	537-117-0	0	0.5	Feet	T	7439976	MERCURY	1.6	1.6	MG/KG	1
SAM93-10	MIGRATED	537-105B	Sediment	SEDIMENT	23-Apr-93	FS	537-105-96	8	8.5	Feet	T	7439976	MERCURY	ND (1.6)	1.6	MG/KG	0
SAM93-10	MIGRATED	537-105B	Sediment	SEDIMENT	23-Apr-93	FS	537-105-72	6	6.5	Feet	T	7439976	MERCURY	ND (1.6)	1.6	MG/KG	0
SAM93-10	MIGRATED	537-105B	Sediment	SEDIMENT	23-Apr-93	FS	537-105-60	5	5.5	Feet	T	7439976	MERCURY	ND (1.6)	1.6	MG/KG	0
SAM93-10	MIGRATED	537-108B	Sediment	SEDIMENT	23-Apr-93	FS	537-108-96	8	8.5	Feet	T	7439976	MERCURY	ND (1.6)	1.6	MG/KG	0
SAM93-10	MIGRATED	537-157	Sediment	SEDIMENT	23-Apr-93	DUP	537-157-12DUP	1	1.5	Feet	T	7439976	MERCURY	ND (1.6)	1.6	MG/KG	0
SAM93-10	MIGRATED	537-197	Sediment	SEDIMENT	29-Apr-93	FS	537-197-12	1	1.5	Feet	T	7439976	MERCURY	ND (1.6)	1.6	MG/KG	0
SAM90-38	MIGRATED	537-83	Sediment	SEDIMENT	26-Sep-90	FS	537-83-0	0	0.5	Feet	T	7439976	MERCURY	1.7	1.7	MG/KG	1
SAM90-41	MIGRATED	537-44	Sediment	SEDIMENT	12-Oct-90	FS	537-44-114	9.5	10	Feet	T	7439976	MERCURY	1.7	1.7	MG/KG	1
SAM93-10	MIGRATED	537-157	Sediment	SEDIMENT	23-Apr-93	FS	537-157-114	9.5	10	Feet	T	7439976	MERCURY	ND (1.7)	1.7	MG/KG	0
SAM93-10	MIGRATED	537-108B	Sediment	SEDIMENT	23-Apr-93	FS	537-108-60	5	5.5	Feet	T	7439976	MERCURY	ND (1.8)	1.8	MG/KG	0
SAM93-10	MIGRATED	537-146	Sediment	SEDIMENT	19-Apr-93	FS	537-146-0	0	0.5	Feet	T	7439976	MERCURY	1.8	1.8	MG/KG	1
SAM93-10	MIGRATED	537-157	Sediment	SEDIMENT	23-Apr-93	FS	537-157-96	8	8.5	Feet	T	7439976	MERCURY	ND (1.8)	1.8	MG/KG	0
SAM93-10	MIGRATED	537-201	Sediment	SEDIMENT	29-Apr-93	FS	537-201-18	1.5	2	Feet	T	7439976	MERCURY	ND (1.8)	1.8	MG/KG	0
SAM90-20	MIGRATED	537-24	Sediment	SEDIMENT	09-Jun-90	FS	537-24-27	2.25	2.75	Feet	T	7439976	MERCURY	1.9	1.9	MG/KG	1
SAM90-38	MIGRATED	537-120	Sediment	SEDIMENT	28-Sep-90	FS	537-120-0	0	0.5	Feet	T	7439976	MERCURY	1.9	1.9	MG/KG	1
SAM90-38	MIGRATED	537-74	Sediment	SEDIMENT	25-Sep-90	FS	537-74-36	3	3.5	Feet	T	7439976	MERCURY	1.9	1.9	MG/KG	1
SAM90-38	MIGRATED	537-90	Sediment	SEDIMENT	26-Sep-90	FS	537-90-18	1.5	2	Feet	T	7439976	MERCURY	1.9	1.9	MG/KG	1
SAM93-10	MIGRATED	537-105B	Sediment	SEDIMENT	23-Apr-93	FS	537-105-114	9.5	10	Feet	T	7439976	MERCURY	ND (1.9)	1.9	MG/KG	0
SAM93-10	MIGRATED	537-105B	Sediment	SEDIMENT	23-Apr-93	FS	537-105-114	9.5	10	Feet	T	7439976	MERCURY	ND (1.9)	1.9	MG/KG	0
SAM93-10	MIGRATED	537-147	Sediment	SEDIMENT	20-Apr-93	FS	537-147-36	3	3.5	Feet	T	7439976	MERCURY	ND (1.9)	1.9	MG/KG	0
SAM90-38	MIGRATED	537-68	Sediment	SEDIMENT	24-Sep-90	FS	537-68-0	0	0.5	Feet	T	7439976	MERCURY	2	2	MG/KG	1
SAM93-10	MIGRATED	537-147	Sediment	SEDIMENT	20-Apr-93	DUP	537-147-36DUP	3	3.5	Feet	T	7439976	MERCURY	ND (2)	2	MG/KG	0
SAM90-20	MIGRATED	537-15	Sediment	SEDIMENT	09-Jun-90	FS	537-15-24	2	2.5	Feet	T	7439976	MERCURY	2.1	2.1	MG/KG	1
SAM90-38	MIGRATED	537-55	Sediment	SEDIMENT	20-Sep-90	FS	537-55-18	1.5	2	Feet	T	7439976	MERCURY	2.1	2.1	MG/KG	1
SAM90-38	MIGRATED	537-61	Sediment	SEDIMENT	24-Sep-90	FS	537-61-18	1.5	2	Feet	T	7439976	MERCURY	2.1	2.1	MG/KG	1
SAM90-38	MIGRATED	537-78	Sediment	SEDIMENT	25-Sep-90	FS	537-78-18	1.5	2	Feet	T	7439976	MERCURY	2.2	2.2	MG/KG	1
SAM90-41	MIGRATED	537-104	Sediment	SEDIMENT	02-Oct-90	DUP	537-104-36DUP	3	3.5	Feet	T	7439976	MERCURY	2.2	2.2	MG/KG	1
SAM90-20	MIGRATED	537-39	Sediment	SEDIMENT	12-Jun-90	FS	537-39-26	2.2	2.7	Feet	T	7439976	MERCURY	2.3	2.3	MG/KG	1
SAM90-20	MIGRATED	537-138	Sediment	SEDIMENT	11-Jun-90	FS	537-138-62	5.1	5.6	Feet	T	7439976	MERCURY	2.4	2.4	MG/KG	1
SAM90-41	MIGRATED	537-136	Sediment	SEDIMENT	02-Oct-90	FS	537-136-114	9.5	10	Feet	T	7439976	MERCURY	2.4	2.4	MG/KG	1
SAM90-20	MIGRATED	537-49	Sediment	SEDIMENT	12-Jun-90	DUP	537-49-72DUP	6	6.5	Feet	T	7439976	MERCURY	2.5	2.5	MG/KG	1
SAM93-10	MIGRATED	537-198	Sediment	SEDIMENT	29-Apr-93	FS	537-198-18	1.5	2	Feet	T	7439976	MERCURY	ND (2.5)			

**Attachment 2
Pompton Lakes Sediment Concentrations**

PROJECT	STATUS	SRCNAME	THEME	SAMPLE_MATRIX	DATESMPL	SMPLT	SAMPLE_NUMBER	TOP	BOTTOM	DepthUnit	FILTERED	CASNO	ANALYTE	RsltPost	RsltVal	UNITS	Hlt
SAM90-38	MIGRATED	537-53	Sediment	SEDIMENT	20-Sep-90	FS	537-53-0	0	0.5	Feet	T	7439976	MERCURY	3.4	3.4	MG/KG	1
SAM90-38	MIGRATED	537-95	Sediment	SEDIMENT	26-Sep-90	FS	537-95-18	1.5	2	Feet	T	7439976	MERCURY	3.4	3.4	MG/KG	1
SAM90-38	MIGRATED	537-62	Sediment	SEDIMENT	21-Sep-90	FS	537-62-18	1.5	2	Feet	T	7439976	MERCURY	3.5	3.5	MG/KG	1
SAM90-20	MIGRATED	537-41	Sediment	SEDIMENT	14-Jun-90	FS	537-41-72	6	6.5	Feet	T	7439976	MERCURY	3.6	3.6	MG/KG	1
SAM93-10	MIGRATED	537-148	Sediment	SEDIMENT	19-Apr-93	FS	537-148-36	3	3.5	Feet	T	7439976	MERCURY	ND (3.6)	3.6	MG/KG	0
SAM90-20	MIGRATED	537-2	Sediment	SEDIMENT	14-Jun-90	FS	537-2-68	5.6	6.1	Feet	T	7439976	MERCURY	3.9	3.9	MG/KG	1
SAM93-10	MIGRATED	537-107B	Sediment	SEDIMENT	22-Apr-93	FS	537-107-0	0	0.5	Feet	T	7439976	MERCURY	3.9	3.9	MG/KG	1
UPL_XRF_537_2003-2004	MIGRATED	537-227	Sediment	SOIL	09-Dec-03	FS	POM-E-537-227-0	0	0.5	Feet	T	7439976	MERCURY	3.955	3.955	MG/KG	1
ABD HG DELIN RND 20 4/07	DDR	537-498	Sediment	SEDIMENT	23-Apr-07	FS	POM-E-537-498(0.0-0.5)	0	0.5	Feet	T	7439976	MERCURY	4.08	4.08	MG/KG	1
SAM90-38	MIGRATED	537-93	Sediment	SEDIMENT	26-Sep-90	FS	537-93-18	1.5	2	Feet	T	7439976	MERCURY	4.2	4.2	MG/KG	1
ABD HG DELIN RND 20 4/07	DDR	537-497	Sediment	SEDIMENT	23-Apr-07	FS	POM-E-537-497(0.0-0.5)	0	0.5	Feet	T	7439976	MERCURY	4.25	4.25	MG/KG	1
ABD HG DELIN SAMP RND 9 8/05	DDR	537-382	Sediment	SEDIMENT	29-Aug-05	FS	POM-E-537-382(12-20)	1	1.67	Feet	T	7439976	MERCURY	4.25 J	4.25	MG/KG	1
SAM90-20	MIGRATED	537-47	Sediment	SEDIMENT	15-Jun-90	FS	537-47-50	4.1	4.6	Feet	T	7439976	MERCURY	4.7	4.7	MG/KG	1
SAM90-41	MIGRATED	537-44	Sediment	SEDIMENT	12-Oct-90	DUP	537-44-60DUP	5	5.5	Feet	T	7439976	MERCURY	4.7	4.7	MG/KG	1
SAM90-41	MIGRATED	537-44	Sediment	SEDIMENT	12-Oct-90	FS	537-44-60	5	5.5	Feet	T	7439976	MERCURY	4.7	4.7	MG/KG	1
SAM93-11	MIGRATED	537-182	Sediment	SEDIMENT	20-Apr-93	FS	537-182-36	3	3.5	Feet	T	7439976	MERCURY	ND (5.1)	5.1	MG/KG	0
SAM90-38	MIGRATED	537-137	Sediment	SEDIMENT	18-Sep-90	FS	537-137-72	6	6.5	Feet	T	7439976	MERCURY	5.2	5.2	MG/KG	1
SAM90-38	MIGRATED	537-92	Sediment	SEDIMENT	26-Sep-90	FS	537-92-0	0	0.5	Feet	T	7439976	MERCURY	5.2	5.2	MG/KG	1
ABD HG DELIN SAMP RND 7 4/05	DDR	537-341	Sediment	SEDIMENT	19-Apr-05	FS	POM-E-537-341(0.0-0.5)	0	0.5	Feet	T	7439976	MERCURY	5.4 J	5.4	MG/KG	1
SAM90-41	MIGRATED	537-143	Sediment	SEDIMENT	05-Oct-90	FS	537-1431-36	3	3.5	Feet	T	7439976	MERCURY	5.5	5.5	MG/KG	1
ABD HG DELIN RND 20 4/07	DDR	537-498	Sediment	SEDIMENT	23-Apr-07	FS	POM-E-537-498(0.5-1.0)	0.5	1	Feet	T	7439976	MERCURY	5.55	5.55	MG/KG	1
SAM90-38	MIGRATED	537-9	Sediment	SEDIMENT	18-Sep-90	FS	537-9-72	6	6.5	Feet	T	7439976	MERCURY	5.6	5.6	MG/KG	1
SAM93-10	MIGRATED	537-200	Sediment	SEDIMENT	29-Apr-93	FS	537-200-18	1.5	2	Feet	T	7439976	MERCURY	ND (5.6)	5.6	MG/KG	0
SAM90-20	MIGRATED	537-1	Sediment	SEDIMENT	13-Jun-90	FS	537-1-72	6	6.5	Feet	T	7439976	MERCURY	5.7	5.7	MG/KG	1
SAM93-10	MIGRATED	537-151	Sediment	SEDIMENT	12-Apr-93	FS	537-151-12	1	1.5	Feet	T	7439976	MERCURY	5.7	5.7	MG/KG	1
ABD HG DELIN SAMP RND 2 8/04	DDR	537-289	Sediment	SEDIMENT	26-Aug-04	FS	POM-E-537-289-0-0.5	0	0	Feet	T	7439976	MERCURY	5.71 J	5.71	MG/KG	1
ABD HG DELIN SAMP RND 3 10/04	DDR	537-302	Sediment	SEDIMENT	30-Sep-04	FS	POM-E-537-302(0.0-0.5)	0	0.5	Feet	T	7439976	MERCURY	5.75 J	5.75	MG/KG	1
SAM90-41	MIGRATED	537-141	Sediment	SEDIMENT	08-Oct-90	FS	537-141-36	3	3.5	Feet	T	7439976	MERCURY	5.8	5.8	MG/KG	1
ABD HG DELIN RND 20 4/07	DDR	537-497	Sediment	SEDIMENT	23-Apr-07	FS	POM-E-537-497(1.25-1.75)	1.25	1.75	Feet	T	7439976	MERCURY	5.81	5.81	MG/KG	1
ABD HG DELIN RND 20 4/07	DDR	537-495	Sediment	SEDIMENT	23-Apr-07	FS	POM-E-537-495(0.5-0.8)	0.5	0.8	Feet	T	7439976	MERCURY	5.88	5.88	MG/KG	1
SAM93-10	MIGRATED	537-196	Sediment	SEDIMENT	29-Apr-93	FS	537-196-18	1.5	2	Feet	T	7439976	MERCURY	ND (5.9)	5.9	MG/KG	0
ABD HG DELIN SAMP RND 13 6/06	DDR	537-424	Sediment	SEDIMENT	15-Jun-06	FS	POM-E-537-424(0.0-0.5)	0	0.5	Feet	T	7439976	MERCURY	6.06	6.06	MG/KG	1
ABD HG DELIN SAMP RND 3 10/04	DDR	537-301	Sediment	SEDIMENT	30-Sep-04	FS	POM-E-537-301(0.0-0.5)	0	0.5	Feet	T	7439976	MERCURY	6.07 J	6.07	MG/KG	1
ABD HG DELIN RND 20 4/07	DDR	537-496	Sediment	SEDIMENT	23-Apr-07	FS	POM-E-537-496(0.5-1.0)	0.5	1	Feet	T	7439976	MERCURY	6.14 J	6.14	MG/KG	1
ABD HG DELIN SAMP RND 4 10/04	DDR	537-309	Sediment	SEDIMENT	26-Oct-04	FS	POM-E-537-309(1.5-2.0)	1.5	2	Feet	T	7439976	MERCURY	6.19	6.19	MG/KG	1
SAM90-20	MIGRATED	537-35	Sediment	SEDIMENT	15-Jun-90	FS	537-35-64	5.3	5.8	Feet	T	7439976	MERCURY	6.2	6.2	MG/KG	1
SAM93-10	MIGRATED	537-155	Sediment	SEDIMENT	13-Apr-93	FS	537-155-12	1	1.5	Feet	T	7439976	MERCURY	6.3	6.3	MG/KG	1
ABD HG DELIN SAMP RND 5 11/04	DDR	537-325	Sediment	SEDIMENT	23-Nov-04	FS	POM-E-537-325(0.0-0.5)	0	0.5	Feet	T	7439976	MERCURY	6.36 J	6.36	MG/KG	1
ABD HG DELIN SAMP RND 4 10/04	DDR	537-314	Sediment	SEDIMENT	27-Oct-04	FS	POM-E-537-314(0.0-0.5)	0	0.5	Feet	T	7439976	MERCURY	6.39	6.39	MG/KG	1
ABD HG DELIN SAMP RND 6 12/04	DDR	537-333	Sediment	SEDIMENT	13-Jan-05	DUP	POM-E-537-333(0.0-0.5)-DUP	0	0.5	Feet	T	7439976	MERCURY	6.57	6.57	MG/KG	1
ABD HG DELIN SAMP RND 6 12/04	DDR	537-333	Sediment	SEDIMENT	13-Jan-05	FS	POM-E-537-333(0.0-0.5)	0	0.5	Feet	T	7439976	MERCURY	6.57	6.57	MG/KG	1
SAM90-38	MIGRATED	537-57	Sediment	SEDIMENT	21-Sep-90	FS	537-57-36	3	3.5	Feet	T	7439976	MERCURY	6.7	6.7	MG/KG	1
ABD HG DELIN SAMP RND 11 5/06	DDR	537-411	Sediment	SEDIMENT	02-May-06	FS	POM-E-537-411(0.0-0.5)	0	0.5	Feet	T	7439976	MERCURY	6.73	6.73	MG/KG	1
SAM90-20	MIGRATED	537-12	Sediment	SEDIMENT	25-Jun-90	FS	537-12-6	0.5	1	Feet	T	7439976	MERCURY	6.9	6.9	MG/KG	1
SAM93-10	MIGRATED	537-146	Sediment	SEDIMENT	19-Apr-93	FS	537-146-12	1	1.5	Feet	T	7439976	MERCURY	7	7	MG/KG	1
ABD HG DELIN SAMP RND 4 10/04	DDR	537-313	Sediment	SEDIMENT	27-Oct-04	FS	POM-E-537-313(0.0-0.5)	0	0.5	Feet	T	7439976	MERCURY	7.06	7.06	MG/KG	1
ACID BROOK DELTA SEDIMENTS	DDR	537-239	Sediment	SEDIMENT	08-Dec-03	FS	POM-E-537-239(0.0-0.5)	0	0.5	Feet	T	7439976	MERCURY	7.14 J	7.14	MG/KG	1
SAM90-20	MIGRATED	537-7	Sediment	SEDIMENT	25-Jun-90	FS	537-7-6	0.5	1	Feet	T	7439976	MERCURY	7.2	7.2	MG/KG	1
SAM90-26	MIGRATED	537-133	Sediment	SEDIMENT	03-Oct-90	FS	537-133-0	0	0.5	Feet	T	7439976	MERCURY	7.2	7.2	MG/KG	1
ABD HG DELIN RND 20 4/07	DDR	537-496	Sediment	SEDIMENT	23-Apr-07	DUP	POM-E-537-496(0.5-1.0)-DUP	0.5	1	Feet	T	7439976	MERCURY	7.4	7.4	MG/KG	1
SAM90-41	MIGRATED	537-33	Sediment	SEDIMENT	11-Oct-90	FS	537-33-114	9.5	10	Feet	T	7439976	MERCURY	7.4	7.4	MG/KG	1
ABD HG DELIN SAMP RND 8 6/05	DDR	537-373	Sediment	SEDIMENT	08-Jun-05	FS	POM-E-537-373(0.0-0.5)	0	0.5	Feet	T	7439976	MERCURY	7.43	7.43	MG/KG	1
SAM90-41	MIGRATED	537-105A	Sediment	SEDIMENT	10-Oct-90	FS	537-105-18	1.5	2	Feet	T	7439976	MERCURY	7.5	7.5	MG/KG	1
ABD HG DELIN SAMP RND 1 8/04	DDR	537-277	Sediment	SEDIMENT	03-Aug-04	FS	POM-E-537-277(0.0-0.5)	0	0.5	Feet	T	7439976	MERCURY	7.52 J	7.52	MG/KG	1
ABD HG DELIN SAMP RND 12 5/06	DDR	537-415	Sediment	SEDIMENT	25-May-06	FS	POM-E-537-415(0.0-0.5)	0	0.5	Feet	T	7439976	MERCURY	7.54	7.54	MG/KG	1
SAM90-20	MIGRATED	537-10	Sediment	SEDIMENT	25-Jun-90	FS	537-10-6	0.5	1	Feet	T	7439976	MERCURY	7.6	7.6	MG/KG	1
ABD HG DELIN SAMP RND 5 11/04	DDR	537-324	Sediment	SEDIMENT	22-Nov-04	FS	POM-E-537-324(0.0-0.5)	0	0.5	Feet	T	7439976	MERCURY	7.65 J	7.65	MG/KG	1
UPL_XRF_537_2003-2004	MIGRATED	537-257	Sediment	SOIL	29-Jan-04	FS	POM-E-537-257	0	0.5	Feet	T	7439976	MERCURY	7.817	7.817	MG/KG	1
ABD HG DELIN SAMP RND 11 5/06	DDR	537-411	Sediment	SEDIMENT	02-May-06	FS	POM-E-537-411(0.7-1.3)	0.7	1.3	Feet	T	7439976	MERCURY	7.83	7.83	MG/KG	1
ABD HG DELIN SAMP RND 2 8/04	DDR	537-287	Sediment	SEDIMENT	26-Aug-04	DUP	POM-E-537-287(0.0-0.5)-DUP	0	0.5	Feet	T	7439976	MERCURY	8 J	8	MG/KG	1
ABD HG DELIN SAMP RND 9 8/05	DDR	537-382	Sediment	SEDIMENT	29-Aug-05	FS	POM-E-537-382(0.0-0.5)	0	0.5	Feet	T	7439976	MERCURY	8.1 J	8.1	MG/KG	1
SAM90-38	MIGRATED	537-85	Sediment	SEDIMENT	26-Sep-90	FS	537-85-0	0	0.5	Feet	T	7439976	MERCURY	8.1	8.1	MG/KG	1
ABD HG DELIN SAMP RND 14 7/06	DDR	537-430	Sediment	SEDIMENT	13-Jul-06	FS	POM-E-537-430(0.0-0.5)	0	0.5	Feet	T	7439976	MERCURY	8.11	8.11	MG/KG	1
SAM90-20	MIGRATED	537-12	Sediment	SEDIMENT	08-Jun-90	FS	537-12-48	4	4.5	Feet	T	7439976	MERCURY	8.2	8.2	MG/KG	1
SAM90-20	MIGRATED	537-6	Sediment	SEDIMENT	07-Jun-90	FS	537-6-68	5.7	6.2	Feet	T	7439976	MERCURY	8.2	8.2	MG/KG	1
ABD HG DELIN SAMP RND 7 4/05	DDR	537-340	Sediment	SEDIMENT	19-Apr-05	FS	POM-E-537-340(0.0-0.5)	0	0.5	Feet	T	7439976	MERCURY	8.21 J	8.21	MG/KG	1
SAM93-10	MIGRATED	537-108B	Sediment	SEDIMENT	23-Apr-93	FS	537-108-12	1	1.5	Feet	T	7439976	MERCURY	8.33	8.33	MG/KG	1
UPL_XRF_537_2003-2004	MIGRATED	537-241	Sediment	SOIL	15-Dec-03	FS	POM-E-537-241-0	0	0.5	Feet	T	7439976	MERCURY	8.409	8.409	MG/KG	1
ABD HG DELIN SAMP RND 10 12/05	DDR	537-403	Sediment	SEDIMENT	01-Dec-05	FS	POM-E-537-403(0.0-0.5)	0	0.5	Feet	T	7439976	MERCURY	8.76	8.76	MG/KG	1
ABD HG DELIN SAMP RND 2 8/04	DDR	537-288	Sediment	SEDIMENT	26-Aug-04	FS	POM-E-537-288-(1.0-1.5)	1	1.5	Feet	T	7439976	MERCURY	8.78 J	8.78	MG/KG	1
SAM93-11	MIGRATED	537-162	Sediment	SEDIMENT	15-Apr-93	FS	537-162-0	0	0.5	Feet	T	7439976	MERCURY	9	9	MG/KG	1
ABD HG DELIN SAMP RND 1 8/04	DDR	537-276	Sediment	SEDIMENT	03-Aug-04	FS	POM-E-537-276(0.0-0.5)	0	0.5	Feet	T	7439976	MERCURY	9.09 J	9.09	MG/KG	1
UPL_XRF_537_2003-2004	MIGRATED	537-224	Sediment	SOIL	09-Dec-03	FS	POM-E-537-224-0	0	0.5	Feet	T	7439976	MERCURY	9.273	9.273	MG/KG	1
ABD HG DELIN SAMP RND 3 10/04	DDR																

**Attachment 2
Pompton Lakes Sediment Concentrations**

PROJECT	STATUS	SRCNAME	THEME	SAMPLE_MATRIX	DATESMPL	SMPLT	SAMPLE_NUMBER	TOP	BOTTOM	DepthUnit	FILTERED	CASNO	ANALYTE	RsltPost	RsltVal	UNITS	Hlt
SAM93-11	MIGRATED	537-182	Sediment	SEDIMENT	20-Apr-93	FS	537-182-12	1	1.5	Feet	T	7439976	MERCURY	10.8	10.8	MG/KG	1
SAM93-10	MIGRATED	537-156	Sediment	SEDIMENT	20-Apr-93	FS	537-156-12	1	1.5	Feet	T	7439976	MERCURY	10.9	10.9	MG/KG	1
SAM90-20	MIGRATED	537-44	Sediment	SEDIMENT	14-Jun-90	FS	537-44-0	0	0.5	Feet	T	7439976	MERCURY	11.1	11.1	MG/KG	1
ABD HG DELIN SAMP RND 4 10/04	DDR	537-312	Sediment	SEDIMENT	26-Oct-04	FS	POM-E-537-312(0.0-0.5)	0	0.5	Feet	T	7439976	MERCURY	11.4	11.4	MG/KG	1
SAM90-41	MIGRATED	537-142	Sediment	SEDIMENT	03-Oct-90	FS	537-142-7	6	6.5	Feet	T	7439976	MERCURY	11.4	11.4	MG/KG	1
ABD HG DELIN RND 20 4/07	DDR	537-494	Sediment	SEDIMENT	23-Apr-07	FS	POM-E-537-494(0.0-0.5)	0	0.5	Feet	T	7439976	MERCURY	11.6	11.6	MG/KG	1
ABD LL HG SAMPLING 8/04	DDR	537-214	Sediment	SEDIMENT	14-Aug-04	FS	POM-E-537-214	0	0	Feet	T	7439976	MERCURY	11.696	11.696	MG/KG	1
SAM90-20	MIGRATED	537-5	Sediment	SEDIMENT	05-Jun-90	FS	537-5-36	3	3.5	Feet	T	7439976	MERCURY	11.7	11.7	MG/KG	1
SAM90-20	MIGRATED	537-25	Sediment	SEDIMENT	11-Jun-90	FS	537-25-24	2	2.5	Feet	T	7439976	MERCURY	11.8	11.8	MG/KG	1
SAM90-20	MIGRATED	537-44	Sediment	SEDIMENT	25-Jun-90	FS	537-44-6	0.5	1	Feet	T	7439976	MERCURY	11.8	11.8	MG/KG	1
ABD HG DELIN SAMP RND 2 8/04	DDR	537-287	Sediment	SEDIMENT	26-Aug-04	FS	POM-E-537-287-0-0.5	0	0	Feet	T	7439976	MERCURY	12.3	12.3	MG/KG	1
SAM90-20	MIGRATED	537-36	Sediment	SEDIMENT	14-Jun-90	FS	537-36-60	5	5.5	Feet	T	7439976	MERCURY	12.3	12.3	MG/KG	1
UPL_XRF_537_2003-2004	MIGRATED	537-243	Sediment	SOIL	15-Dec-03	FS	POM-E-537-243-0	0	0.5	Feet	T	7439976	MERCURY	12.386	12.386	MG/KG	1
ABD HG DELIN SAMP RND 3 10/04	DDR	537-299	Sediment	SEDIMENT	30-Sep-04	DUP	POM-E-537-299-(0.0-0.5)-DUP	0	0.5	Feet	T	7439976	MERCURY	12.5	12.5	MG/KG	1
SAM90-20	MIGRATED	537-43	Sediment	SEDIMENT	14-Jun-90	FS	537-43-24	2	2.5	Feet	T	7439976	MERCURY	12.9	12.9	MG/KG	1
UPL_XRF_537_2003-2004	MIGRATED	537-261	Sediment	SOIL	28-Dec-03	FS	POM-E-537-261-0	0	0.5	Feet	T	7439976	MERCURY	12.95	12.95	MG/KG	1
ABD HG DELIN SAMP RND 1 8/04	DDR	537-283	Sediment	SEDIMENT	03-Aug-04	DUP	POM-E-537-283(0.5)-DUP	0	0.5	Feet	T	7439976	MERCURY	13.1	13.1	MG/KG	1
SAM90-20	MIGRATED	537-9	Sediment	SEDIMENT	07-Jun-90	FS	537-9-0	0	0.5	Feet	T	7439976	MERCURY	13.1	13.1	MG/KG	1
UPL_XRF_537_2003-2004	MIGRATED	537-258	Sediment	SOIL	28-Dec-03	FS	POM-E-537-258-0	0	0.5	Feet	T	7439976	MERCURY	13.139	13.139	MG/KG	1
ABD HG DELIN SAMP RND 4 10/04	DDR	537-310	Sediment	SEDIMENT	26-Oct-04	FS	POM-E-537-310(0.0-0.5)	0	0.5	Feet	T	7439976	MERCURY	13.3	13.3	MG/KG	1
ABD HG DELIN SAMP RND 10 12/05	DDR	537-402	Sediment	SEDIMENT	01-Dec-05	FS	POM-E-537-402(0.0-0.5)	0	0.5	Feet	T	7439976	MERCURY	13.4	13.4	MG/KG	1
ABD HG DELIN SAMP RND 1 8/04	DDR	537-283	Sediment	SEDIMENT	03-Aug-04	FS	POM-E-537-283(0.0-0.5)	0	0.5	Feet	T	7439976	MERCURY	13.5	13.5	MG/KG	1
SAM90-20	MIGRATED	537-35	Sediment	SEDIMENT	15-Jun-90	DUP	537-35-64DUP	5.3	5.8	Feet	T	7439976	MERCURY	13.5	13.5	MG/KG	1
SAM90-20	MIGRATED	537-46	Sediment	SEDIMENT	15-Jun-90	FS	537-46-86	7.1	7.6	Feet	T	7439976	MERCURY	13.6	13.6	MG/KG	1
SAM93-11	MIGRATED	537-195	Sediment	SEDIMENT	20-Apr-93	FS	537-195-0	0	0.5	Feet	T	7439976	MERCURY	13.8	13.8	MG/KG	1
ABD HG DELIN SAMP RND 5 11/04	DDR	537-323	Sediment	SEDIMENT	22-Nov-04	FS	POM-E-537-323(1-1.5)	1	1.5	Feet	T	7439976	MERCURY	13.9	13.9	MG/KG	1
SAM90-20	MIGRATED	537-24	Sediment	SEDIMENT	09-Jun-90	FS	537-24-0	0	0.5	Feet	T	7439976	MERCURY	14	14	MG/KG	1
ABD HG TOTAL VNDRBLT 1/08	DDR	537-241	Sediment	SEDIMENT	31-Jan-08	FS	POM-E-537-241	0	0	Feet	T	7439976	MERCURY	14.4	14.4	MG/KG	1
SAM90-38	MIGRATED	537-78	Sediment	SEDIMENT	25-Sep-90	FS	537-78-0	0	0.5	Feet	T	7439976	MERCURY	15	15	MG/KG	1
SAM90-41	MIGRATED	537-103	Sediment	SEDIMENT	01-Oct-90	FS	537-103-18	1.5	2	Feet	T	7439976	MERCURY	15.1	15.1	MG/KG	1
UPL_XRF_537_2003-2004	MIGRATED	537-235	Sediment	SOIL	15-Dec-03	FS	POM-E-537-235-0	0	0.5	Feet	T	7439976	MERCURY	15.769	15.769	MG/KG	1
ABD HG DELIN SAMP RND 5 11/04	DDR	537-322	Sediment	SEDIMENT	22-Nov-04	FS	POM-E-537-322(0.0-0.5)	0	0.5	Feet	T	7439976	MERCURY	15.9	15.9	MG/KG	1
SAM90-20	MIGRATED	537-25	Sediment	SEDIMENT	25-Jun-90	FS	537-25-6	0.5	1	Feet	T	7439976	MERCURY	15.9	15.9	MG/KG	1
SAM90-41	MIGRATED	537-140	Sediment	SEDIMENT	12-Oct-90	FS	537-140-18	1.5	2	Feet	T	7439976	MERCURY	15.9	15.9	MG/KG	1
ABD HG DELIN SAMP RND 11 5/06	DDR	537-410	Sediment	SEDIMENT	02-May-06	FS	POM-E-537-410(0.0-0.5)	0	0.5	Feet	T	7439976	MERCURY	16	16	MG/KG	1
SAM93-10	MIGRATED	537-1078	Sediment	SEDIMENT	22-Apr-93	FS	537-107-36	3	3.5	Feet	T	7439976	MERCURY	16.2	16.2	MG/KG	1
ABD HG DELIN SAMP RND 4 10/04	DDR	537-312	Sediment	SEDIMENT	26-Oct-04	DUP	POM-E-537-312(0.0-0.5)-DUP	0	0.5	Feet	T	7439976	MERCURY	16.3	16.3	MG/KG	1
SAM93-11	MIGRATED	537-190	Sediment	SEDIMENT	21-Apr-93	FS	537-190-0	0	0.5	Feet	T	7439976	MERCURY	16.3	16.3	MG/KG	1
ABD HG DELIN SAMP RND 1 8/04	DDR	537-275	Sediment	SEDIMENT	03-Aug-04	FS	POM-E-537-275(0.0-0.5)	0	0.5	Feet	T	7439976	MERCURY	16.5	16.5	MG/KG	1
ABD HG DELIN SAMP RND 6 12/04	DDR	537-331	Sediment	SEDIMENT	13-Jan-05	FS	POM-E-537-331(0.0-0.5)	0	0.5	Feet	T	7439976	MERCURY	16.5	16.5	MG/KG	1
ACID BROOK DELTA SEDIMENTS	DDR	537-257	Sediment	SEDIMENT	20-Dec-03	FS	POM-E-537-257(0.0-0.5)	0	0.5	Feet	T	7439976	MERCURY	16.5	16.5	MG/KG	1
UPL_XRF_537_2003-2004	MIGRATED	537-264	Sediment	SOIL	28-Dec-03	FS	POM-E-537-264-0	0	0.5	Feet	T	7439976	MERCURY	16.84	16.84	MG/KG	1
SAM90-20	MIGRATED	537-28	Sediment	SEDIMENT	11-Jun-90	FS	537-28-24	2	2.5	Feet	T	7439976	MERCURY	16.9	16.9	MG/KG	1
SAM93-10	MIGRATED	537-1088	Sediment	SEDIMENT	23-Apr-93	FS	537-108-0	0	0.5	Feet	T	7439976	MERCURY	16.9	16.9	MG/KG	1
ABD HG DELIN SAMP RND 3 10/04	DDR	537-299	Sediment	SEDIMENT	30-Sep-04	FS	POM-E-537-299-(0.0-0.5)	0	0.5	Feet	T	7439976	MERCURY	17	17	MG/KG	1
ACID BROOK DELTA SEDIMENTS	DDR	537-257	Sediment	SEDIMENT	20-Dec-03	DUP	POM-E-537-257(0.0-0.5)-DUP	0	0.5	Feet	T	7439976	MERCURY	17	17	MG/KG	1
SAM90-20	MIGRATED	537-37	Sediment	SEDIMENT	14-Jun-90	FS	537-37-0	0	0.5	Feet	T	7439976	MERCURY	17	17	MG/KG	1
ABD HG DELIN SAMP RND 3 10/04	DDR	537-298	Sediment	SEDIMENT	29-Sep-04	FS	POM-E-537-298(0.0-0.5)	0	0.5	Feet	T	7439976	MERCURY	17.3	17.3	MG/KG	1
ABD HG DELIN SAMP RND 4 10/04	DDR	537-315	Sediment	SEDIMENT	27-Oct-04	FS	POM-E-537-315(0.0-0.5)	0	0.5	Feet	T	7439976	MERCURY	17.4	17.4	MG/KG	1
SAM90-38	MIGRATED	537-82	Sediment	SEDIMENT	26-Sep-90	FS	537-82-0	0	0.5	Feet	T	7439976	MERCURY	17.8	17.8	MG/KG	1
ABD HG DELIN SAMP RND 9 8/05	DDR	537-381	Sediment	SEDIMENT	29-Aug-05	FS	POM-E-537-381(0.0-0.5)	0	0.5	Feet	T	7439976	MERCURY	18.1	18.1	MG/KG	1
SAM90-20	MIGRATED	537-18	Sediment	SEDIMENT	09-Jun-90	FS	537-18-0	0	0.5	Feet	T	7439976	MERCURY	18.2	18.2	MG/KG	1
SAM90-20	MIGRATED	537-3	Sediment	SEDIMENT	14-Jun-90	FS	537-3-68	5.6	6.1	Feet	T	7439976	MERCURY	18.7	18.7	MG/KG	1
ABD HG DELIN SAMP RND 8 6/05	DDR	537-371	Sediment	SEDIMENT	08-Jun-05	FS	POM-E-537-371(0.0-0.5)	0	0.5	Feet	T	7439976	MERCURY	19	19	MG/KG	1
UPL_XRF_537_2003-2004	MIGRATED	537-257	Sediment	SOIL	29-Jan-04	DUP	POM-E-537-257DUP	0	0.5	Feet	T	7439976	MERCURY	19.036	19.036	MG/KG	1
SAM90-20	MIGRATED	537-3	Sediment	SEDIMENT	05-Jun-90	FS	537-3-18	1.5	2	Feet	T	7439976	MERCURY	19.2	19.2	MG/KG	1
SAM90-41	MIGRATED	537-33	Sediment	SEDIMENT	11-Oct-90	DUP	537-33-72DUP	6	6.5	Feet	T	7439976	MERCURY	19.2	19.2	MG/KG	1
SAM90-41	MIGRATED	537-33	Sediment	SEDIMENT	11-Oct-90	FS	537-33-72	6	6.5	Feet	T	7439976	MERCURY	19.2	19.2	MG/KG	1
ABD HG DELIN SAMP RND 2 8/04	DDR	537-286	Sediment	SEDIMENT	26-Aug-04	FS	POM-E-537-286-0-0.5	0	0.5	Feet	T	7439976	MERCURY	19.4	19.4	MG/KG	1
ABD HG DELIN SAMP RND 5 11/04	DDR	537-325	Sediment	SEDIMENT	23-Nov-04	FS	POM-E-537-325(1-1.5)	1	1.5	Feet	T	7439976	MERCURY	19.6	19.6	MG/KG	1
ABD HG DELIN SAMP RND 11 5/06	DDR	537-410	Sediment	SEDIMENT	02-May-06	FS	POM-E-537-410(0.0-0.5)	0.8	1.2	Feet	T	7439976	MERCURY	19.8	19.8	MG/KG	1
SAM90-20	MIGRATED	537-11	Sediment	SEDIMENT	25-Jun-90	FS	537-11-6	0.5	1	Feet	T	7439976	MERCURY	19.8	19.8	MG/KG	1
UPL_XRF_537_2003-2004	MIGRATED	537-238	Sediment	SOIL	15-Dec-03	FS	POM-E-537-238-0	0	0.5	Feet	T	7439976	MERCURY	19.857	19.857	MG/KG	1
SAM90-20	MIGRATED	537-31	Sediment	SEDIMENT	12-Jun-90	FS	537-31-0	0	0.5	Feet	T	7439976	MERCURY	20	20	MG/KG	1
SAM90-20	MIGRATED	537-33	Sediment	SEDIMENT	14-Jun-90	FS	537-33-0	0	0.5	Feet	T	7439976	MERCURY	20.8	20.8	MG/KG	1
UPL_XRF_537_2003-2004	MIGRATED	537-256	Sediment	SOIL	28-Dec-03	FS	POM-E-537-256-0	0	0.5	Feet	T	7439976	MERCURY	20.973	20.973	MG/KG	1
SAM90-20	MIGRATED	537-38	Sediment	SEDIMENT	13-Jun-90	FS	537-38-18	1.5	2	Feet	T	7439976	MERCURY	21	21	MG/KG	1
ABD HG DELIN RND 20 4/07	DDR	537-494	Sediment	SEDIMENT	23-Apr-07	FS	POM-E-537-494(0.9-1.4)	0.9	1.4	Feet	T	7439976	MERCURY	21.4	21.4	MG/KG	1
SAM90-20	MIGRATED	537-11	Sediment	SEDIMENT	08-Jun-90	FS	537-11-0	0	0.5	Feet	T	7439976	MERCURY	21.8	21.8	MG/KG	1
SAM93-10	MIGRATED	537-200	Sediment	SEDIMENT	29-Apr-93	FS	537-200-0	0	0.5	Feet	T	7439976	MERCURY	21.8	21.8	MG/KG	1
SAM93-11	MIGRATED	537-183	Sediment	SEDIMENT	21-Apr-93	FS	537-183-0	0	0.5	Feet	T	7439976	MERCURY	21.9	21.9	MG/KG	1
SAM90-20	MIGRATED	537-32	Sediment	SEDIMENT	12-Jun-90	FS	537-32-0	0	0.5	Feet	T	7439976	MERCURY	22.4	22.4	MG/KG	1
SAM90-38	MIGRATED	537-89	Sediment	SEDIMENT	26-Sep-90	FS	537-89-0	0	0.5	Feet	T	7439976	MERCURY	22.4	22.4	MG/KG	1
ACID BROOK DELTA SEDIMENTS	DDR	537-259	Sediment	SEDIMENT	20-Dec-03	FS	POM-E-537-259(0.0-0										

**Attachment 2
Pompton Lakes Sediment Concentrations**

PROJECT	STATUS	SRCNAME	THEME	SAMPLE_MATRIX	DATESMPL	SMPLT	SAMPLE_NUMBER	TOP	BOTTOM	DepthUnit	FILTERED	CASNO	ANALYTE	RsltPost	RsltVal	UNITS	Hlt
SAM93-10	MIGRATED	537-108B	Sediment	SEDIMENT	23-Apr-93	FS	537-108-0	0	0.5	Feet	T	7439976	MERCURY	26.3	26.3	MG/KG	1
SAM90-20	MIGRATED	537-3	Sediment	SEDIMENT	05-Jun-90	FS	537-3-36	3	3.5	Feet	T	7439976	MERCURY	26.6	26.6	MG/KG	1
SAM90-20	MIGRATED	537-4	Sediment	SEDIMENT	13-Jun-90	FS	537-4-68	5.6	6.1	Feet	T	7439976	MERCURY	26.9	26.9	MG/KG	1
SAM90-20	MIGRATED	537-5	Sediment	SEDIMENT	05-Jun-90	FS	537-5-18	1.5	2	Feet	T	7439976	MERCURY	26.9	26.9	MG/KG	1
ACID BROOK DELTA SEDIMENTS	DDR	537-255	Sediment	SEDIMENT	20-Dec-03	FS	POM-E-537-255-(0-0.5)	0	0.5	Feet	T	7439976	MERCURY	27.4	27.4	MG/KG	1
SAM90-38	MIGRATED	537-89	Sediment	SEDIMENT	26-Sep-90	DUP	537-89-0DUP	0	0	Feet	T	7439976	MERCURY	27.5	27.5	MG/KG	1
SAM93-10	MIGRATED	537-197	Sediment	SEDIMENT	29-Apr-93	FS	537-197-0	0	0.5	Feet	T	7439976	MERCURY	27.8	27.8	MG/KG	1
SAM90-38	MIGRATED	537-88	Sediment	SEDIMENT	26-Sep-90	FS	537-88-0	0	0.5	Feet	T	7439976	MERCURY	28	28	MG/KG	1
ABD HG TOTAL VNDRBLT 1/08	DDR	537-76	Sediment	SEDIMENT	31-Jan-08	FS	POM-E-537-76	0	0	Feet	T	7439976	MERCURY	32.1	32.1	MG/KG	1
SAM90-20	MIGRATED	537-33	Sediment	SEDIMENT	14-Jun-90	FS	537-33-24	2	2.5	Feet	T	7439976	MERCURY	32.2	32.2	MG/KG	1
ABD SPRING SAMPLING 2010	DDR	537-205A	Sediment	SEDIMENT	17-May-10	FS	POM-E-537-205A(1.2-1.7)	1.2	1.7	Feet	T	7439976	MERCURY	32.3	32.3	MG/KG	1
SAM93-10	MIGRATED	537-149	Sediment	SEDIMENT	21-Apr-93	FS	537-149-36	3	3.5	Feet	T	7439976	MERCURY	32.3	32.3	MG/KG	1
SAM90-41	MIGRATED	537-140	Sediment	SEDIMENT	12-Oct-90	FS	537-140-36	3	3.5	Feet	T	7439976	MERCURY	32.7	32.7	MG/KG	1
SAM90-20	MIGRATED	537-14	Sediment	SEDIMENT	07-Jun-90	FS	537-14-0	0	0.5	Feet	T	7439976	MERCURY	33.7	33.7	MG/KG	1
SAM93-10	MIGRATED	537-159	Sediment	SEDIMENT	13-Apr-93	FS	537-159-12	1	1.5	Feet	T	7439976	MERCURY	34.6	34.6	MG/KG	1
ABD HG DELIN SAMP RND 1 8/04	DDR	537-273	Sediment	SEDIMENT	02-Aug-04	FS	POM-E-537-273(0-.5)	0	0.5	Feet	T	7439976	MERCURY	35.8 J	35.8	MG/KG	1
UPL_XRF_537_2003-2004	MIGRATED	537-271	Sediment	SOIL	28-Dec-03	FS	POM-E-537-271-0	0	0.5	Feet	T	7439976	MERCURY	36.082	36.082	MG/KG	1
UPL_XRF_537_2003-2004	MIGRATED	537-259	Sediment	SOIL	29-Jan-04	FS	POM-E-537-259	0	0.5	Feet	T	7439976	MERCURY	36.158	36.158	MG/KG	1
UPL_XRF_537_2003-2004	MIGRATED	537-268	Sediment	SOIL	28-Dec-03	DUP	POM-E-537-268-0/DUP	0	0.5	Feet	T	7439976	MERCURY	36.564	36.564	MG/KG	1
ABD HG DELIN SAMP RND 3 10/04	DDR	537-301	Sediment	SEDIMENT	30-Sep-04	FS	POM-E-537-301-(1.5-2.0)	1.5	2	Feet	T	7439976	MERCURY	37.4 J	37.4	MG/KG	1
ABD HG DELIN SAMP RND 1 8/04	DDR	537-277	Sediment	SEDIMENT	03-Aug-04	FS	POM-E-537-277(1.25-1.75)	1.25	1.75	Feet	T	7439976	MERCURY	37.9 J	37.9	MG/KG	1
SAM90-41	MIGRATED	537-105A	Sediment	SEDIMENT	10-Oct-90	DUP	537-105-0DUP	0	0.5	Feet	T	7439976	MERCURY	37.9	37.9	MG/KG	1
SAM90-20	MIGRATED	537-38	Sediment	SEDIMENT	13-Jun-90	FS	537-38-0	0	0.5	Feet	T	7439976	MERCURY	38.2	38.2	MG/KG	1
SAM90-41	MIGRATED	537-44	Sediment	SEDIMENT	12-Oct-90	FS	537-44-96	8	8.5	Feet	T	7439976	MERCURY	38.5	38.5	MG/KG	1
ABD HG DELIN SAMP RND 2 8/04	DDR	537-289	Sediment	SEDIMENT	26-Aug-04	FS	POM-E-537-289-(1.0-1.5)	1	1.5	Feet	T	7439976	MERCURY	38.8 J	38.8	MG/KG	1
SAM90-20	MIGRATED	537-4	Sediment	SEDIMENT	13-Jun-90	DUP	537-4-68DUP	5.6	6.1	Feet	T	7439976	MERCURY	38.8	38.8	MG/KG	1
SAM90-38	MIGRATED	537-69	Sediment	SEDIMENT	24-Sep-90	FS	537-69-0	0	0.5	Feet	T	7439976	MERCURY	38.9	38.9	MG/KG	1
UPL_XRF_537_2003-2004	MIGRATED	537-255	Sediment	SOIL	29-Jan-04	FS	POM-E-537-255	0	0.5	Feet	T	7439976	MERCURY	38.997	38.997	MG/KG	1
UPL_XRF_537_2003-2004	MIGRATED	537-268	Sediment	SOIL	28-Dec-03	FS	POM-E-537-268-0	0	0.5	Feet	T	7439976	MERCURY	39.546	39.546	MG/KG	1
SAM90-38	MIGRATED	537-97	Sediment	SEDIMENT	26-Sep-90	FS	537-97-0	0	0.5	Feet	T	7439976	MERCURY	39.6	39.6	MG/KG	1
ABD HG DELIN SAMP RND 2 8/04	DDR	537-287	Sediment	SEDIMENT	26-Aug-04	FS	POM-E-537-287-(0.75-1.25)	0.75	1.25	Feet	T	7439976	MERCURY	39.7 J	39.7	MG/KG	1
SAM90-41	MIGRATED	537-131	Sediment	SEDIMENT	04-Oct-90	FS	537-131-36	3	3.5	Feet	T	7439976	MERCURY	39.9	39.9	MG/KG	1
UPL_XRF_537_2003-2004	MIGRATED	537-254	Sediment	SOIL	21-Dec-03	FS	POM-E-537-254-0	0	0.5	Feet	T	7439976	MERCURY	39.946	39.946	MG/KG	1
SAM90-38	MIGRATED	537-127	Sediment	SEDIMENT	28-Sep-90	FS	537-127-0	0	0.5	Feet	T	7439976	MERCURY	40.2	40.2	MG/KG	1
SAM90-38	MIGRATED	537-99	Sediment	SEDIMENT	27-Sep-90	FS	537-99-0	0	0.5	Feet	T	7439976	MERCURY	41	41	MG/KG	1
ABD HG DELIN SAMP RND 1 8/04	DDR	537-274	Sediment	SEDIMENT	02-Aug-04	FS	POM-E-537-274(0-0.5)	0	0.5	Feet	T	7439976	MERCURY	41.1 J	41.1	MG/KG	1
SAM90-20	MIGRATED	537-2	Sediment	SEDIMENT	05-Jun-90	FS	537-2-36	3	3.5	Feet	T	7439976	MERCURY	41.9	41.9	MG/KG	1
ABD HG DELIN SAMP RND 2 8/04	DDR	537-284	Sediment	SEDIMENT	26-Aug-04	FS	POM-E-537-284-0-0.5	0	0.5	Feet	T	7439976	MERCURY	42.2 J	42.2	MG/KG	1
SAM90-38	MIGRATED	537-64	Sediment	SEDIMENT	21-Sep-90	FS	537-64-0	0	0.5	Feet	T	7439976	MERCURY	42.3	42.3	MG/KG	1
SAM90-38	MIGRATED	537-59	Sediment	SEDIMENT	21-Sep-90	FS	537-59-0	0	0.5	Feet	T	7439976	MERCURY	42.5	42.5	MG/KG	1
SAM90-38	MIGRATED	537-70	Sediment	SEDIMENT	24-Sep-90	FS	537-70-0	0	0.5	Feet	T	7439976	MERCURY	42.7	42.7	MG/KG	1
SAM90-38	MIGRATED	537-93	Sediment	SEDIMENT	26-Sep-90	FS	537-93-0	0	0.5	Feet	T	7439976	MERCURY	42.7	42.7	MG/KG	1
ABD HG DELIN SAMP RND 4 10/04	DDR	537-314	Sediment	SEDIMENT	27-Oct-04	FS	POM-E-537-314(1-1.5)	1	1.5	Feet	T	7439976	MERCURY	43.1	43.1	MG/KG	1
ABD HG TOTAL VNDRBLT 1/08	DDR	537-339	Sediment	SEDIMENT	01-Feb-08	FS	POM-E-537-339	0	0	Feet	T	7439976	MERCURY	43.2	43.2	MG/KG	1
UPL_XRF_537_2003-2004	MIGRATED	537-237	Sediment	SOIL	15-Dec-03	FS	POM-E-537-237-0	0	0.5	Feet	T	7439976	MERCURY	43.425	43.425	MG/KG	1
SAM90-38	MIGRATED	537-58	Sediment	SEDIMENT	21-Sep-90	FS	537-58-0	0	0.5	Feet	T	7439976	MERCURY	43.7	43.7	MG/KG	1
SAM90-38	MIGRATED	537-70	Sediment	SEDIMENT	24-Sep-90	DUP	537-70-0DUP	0	0	Feet	T	7439976	MERCURY	43.9	43.9	MG/KG	1
UPL_XRF_537_2003-2004	MIGRATED	537-270	Sediment	SOIL	28-Dec-03	FS	POM-E-537-270-0	0	0.5	Feet	T	7439976	MERCURY	48.356	48.356	MG/KG	1
ABD HG DELIN SAMP RND 1 8/04	DDR	537-272	Sediment	SEDIMENT	02-Aug-04	FS	POM-E-537-272(0-.5)	0	0.5	Feet	T	7439976	MERCURY	49.1 J	49.1	MG/KG	1
ABD HG DELIN SAMP RND 1 8/04	DDR	537-283	Sediment	SEDIMENT	03-Aug-04	FS	POM-E-537-283(1.5-2.0)	1.5	2	Feet	T	7439976	MERCURY	49.6 J	49.6	MG/KG	1
SAM93-11	MIGRATED	537-166	Sediment	SEDIMENT	15-Apr-93	FS	537-166-0	0	0.5	Feet	T	7439976	MERCURY	49.7	49.7	MG/KG	1
SAM93-10	MIGRATED	537-201	Sediment	SEDIMENT	29-Apr-93	FS	537-201-0	0	0.5	Feet	T	7439976	MERCURY	49.8	49.8	MG/KG	1
SAM90-20	MIGRATED	537-6	Sediment	SEDIMENT	07-Jun-90	FS	537-6-44	3.7	4.3	Feet	T	7439976	MERCURY	50.6	50.6	MG/KG	1
SAM93-10	MIGRATED	537-105B	Sediment	SEDIMENT	23-Apr-93	FS	537-105-0	0	0.5	Feet	T	7439976	MERCURY	51.1	51.1	MG/KG	1
SAM93-10	MIGRATED	537-198	Sediment	SEDIMENT	29-Apr-93	FS	537-198-0	0	0.5	Feet	T	7439976	MERCURY	51.9	51.9	MG/KG	1
SAM93-10	MIGRATED	537-203	Sediment	SEDIMENT	29-Apr-93	FS	537-203-0	0	0.5	Feet	T	7439976	MERCURY	52.7	52.7	MG/KG	1
SAM90-20	MIGRATED	537-1	Sediment	SEDIMENT	05-Jun-90	FS	537-1-18	1.5	2	Feet	T	7439976	MERCURY	54.1	54.1	MG/KG	1
UPL_XRF_537_2003-2004	MIGRATED	537-217	Sediment	SOIL	09-Dec-03	FS	POM-E-537-217-0	0	0.5	Feet	T	7439976	MERCURY	54.903	54.903	MG/KG	1
SAM90-38	MIGRATED	537-74	Sediment	SEDIMENT	25-Sep-90	FS	537-74-0	0	0.5	Feet	T	7439976	MERCURY	55.6	55.6	MG/KG	1
ABD HG DELIN SAMP RND 5 11/04	DDR	537-324	Sediment	SEDIMENT	22-Nov-04	FS	POM-E-537-324(1-1.5)	1	1.5	Feet	T	7439976	MERCURY	56 J	56	MG/KG	1
SAM90-41	MIGRATED	537-104	Sediment	SEDIMENT	02-Oct-90	FS	537-104-18	1.5	2	Feet	T	7439976	MERCURY	56.3	56.3	MG/KG	1
ACID BROOK DELTA SEDIMENTS	DDR	537-236	Sediment	SEDIMENT	08-Dec-03	FS	POM-E-537-236-(0-0.5)	0	0.5	Feet	T	7439976	MERCURY	56.4 J	56.4	MG/KG	1
SAM90-38	MIGRATED	537-73	Sediment	SEDIMENT	25-Sep-90	FS	537-73-0	0	0.5	Feet	T	7439976	MERCURY	56.5	56.5	MG/KG	1
ABD HG DELIN SAMP RND 3 10/04	DDR	537-302	Sediment	SEDIMENT	30-Sep-04	FS	POM-E-537-302-(1-1.5)	1	1.5	Feet	T	7439976	MERCURY	57.1 J	57.1	MG/KG	1
SAM90-20	MIGRATED	537-52	Sediment	SEDIMENT	13-Jun-90	FS	537-52-48	4	4.5	Feet	T	7439976	MERCURY	57.2	57.2	MG/KG	1
UPL_XRF_537_2003-2004	MIGRATED	537-233	Sediment	SOIL	15-Dec-03	FS	POM-E-537-233-0	0	0.5	Feet	T	7439976	MERCURY	57.223	57.223	MG/KG	1
ABD HG DELIN SAMP RND 1 8/04	DDR	537-274	Sediment	SEDIMENT	02-Aug-04	FS	POM-E-537-274(1-1.5)	1	1.5	Feet	T	7439976	MERCURY	57.5 J	57.5	MG/KG	1
SAM93-10	MIGRATED	537-196	Sediment	SEDIMENT	29-Apr-93	FS	537-196-0	0	0.5	Feet	T	7439976	MERCURY	57.8	57.8	MG/KG	1
ABD HG DELIN SAMP RND 1 8/04	DDR	537-276	Sediment	SEDIMENT	03-Aug-04	FS	POM-E-537-276(1-1.5)	1	1.5	Feet	T	7439976	MERCURY	58.1 J	58.1	MG/KG	1
SAM93-10	MIGRATED	537-203	Sediment	SEDIMENT	29-Apr-93	DUP	537-203-0DUP	0	0.5	Feet	T	7439976	MERCURY	59.6	59.6	MG/KG	1
SAM90-20	MIGRATED	537-5	Sediment	SEDIMENT	05-Jun-90	FS	537-5-0	0	0.5	Feet	T	7439976	MERCURY	59.8	59.8	MG/KG	1
UPL_XRF_537_2003-2004	MIGRATED	537-263	Sediment	SOIL	28-Dec-03	FS	POM-E-537-263-0	0	0.5	Feet	T	7439976	MERCURY	59.809	59.809	MG/KG	1
ABD HG DELIN SAMP RND 2 8/04	DDR	537-288	Sediment	SEDIMENT	26-Aug-04	FS	POM-E-537-288-0-0.5	0	0	Feet	T	7439976	MERCURY	59.9 J	59.9	MG/KG	1
UPL_XRF_537_2003-2004	MIGRATED	537-231	Sediment	SOIL	09-Dec-03	FS	POM-E-537-231-0	0	0.5	Feet	T	7439976	MERCURY	61.			

**Attachment 2
Pompton Lakes Sediment Concentrations**

PROJECT	STATUS	SRCNAME	THEME	SAMPLE_MATRIX	DATESMPL	SMPLT	SAMPLE_NUMBER	TOP	BOTTOM	DepthUnit	FILTERED	CASNO	ANALYTE	RsltPost	RsltVal	UNITS	Hlt
SAM90-20	MIGRATED	537-34	Sediment	SEDIMENT	14-Jun-90	FS	537-34-36	3	3.5	Feet	T	7439976	MERCURY	70.2	70.2	MG/KG	1
ABD HG DELIN SAMP RND 1 8/04	DDR	537-275	Sediment	SEDIMENT	03-Aug-04	FS	POM-E-537-275(0.75-1.25)	0.75	1.25	Feet	T	7439976	MERCURY	70.3 J	70.3	MG/KG	1
SAM90-20	MIGRATED	537-51	Sediment	SEDIMENT	25-Jun-90	FS	537-51-6	0.5	1	Feet	T	7439976	MERCURY	70.5	70.5	MG/KG	1
ABD HG DELIN SAMP RND 7 4/05	DDR	537-341	Sediment	SEDIMENT	19-Apr-05	FS	POM-E-537-341(1.0-1.5)	1	1.5	Feet	T	7439976	MERCURY	71.2 J	71.2	MG/KG	1
UPL_XRF_537_2003-2004	MIGRATED	537-211	Sediment	SOIL	09-Dec-03	FS	POM-E-537-211-0	0	0.5	Feet	T	7439976	MERCURY	71.423	71.423	MG/KG	1
ABD HG DELIN SAMP RND 7 4/05	DDR	537-340	Sediment	SEDIMENT	19-Apr-05	FS	POM-E-537-340(1.5-2.0)	1.5	2	Feet	T	7439976	MERCURY	71.7 J	71.7	MG/KG	1
SAM93-11	MIGRATED	537-169	Sediment	SEDIMENT	15-Apr-93	FS	537-169-0	0	0.5	Feet	T	7439976	MERCURY	72.1	72.1	MG/KG	1
SAM90-38	MIGRATED	537-96	Sediment	SEDIMENT	26-Sep-90	FS	537-96-0	0	0.5	Feet	T	7439976	MERCURY	72.3	72.3	MG/KG	1
SAM90-20	MIGRATED	537-6	Sediment	SEDIMENT	25-Jun-90	FS	537-6-6	0.5	1	Feet	T	7439976	MERCURY	72.4	72.4	MG/KG	1
SAM90-20	MIGRATED	537-9	Sediment	SEDIMENT	25-Jun-90	FS	537-9-6	0.5	1	Feet	T	7439976	MERCURY	72.7	72.7	MG/KG	1
ABD HG DELIN SAMP RND 4 10/04	DDR	537-313	Sediment	SEDIMENT	27-Oct-04	FS	POM-E-537-313(1.5-1.5)	1	1.5	Feet	T	7439976	MERCURY	72.8	72.8	MG/KG	1
SAM90-20	MIGRATED	537-14	Sediment	SEDIMENT	25-Jun-90	FS	537-14-6	0.5	1	Feet	T	7439976	MERCURY	72.9	72.9	MG/KG	1
SAM90-38	MIGRATED	537-102	Sediment	SEDIMENT	27-Sep-90	FS	537-102-0	0	0.5	Feet	T	7439976	MERCURY	72.9	72.9	MG/KG	1
SAM93-10	MIGRATED	537-152	Sediment	SEDIMENT	20-Apr-93	FS	537-152-12	1	1.5	Feet	T	7439976	MERCURY	73	73	MG/KG	1
UPL_XRF_537_2003-2004	MIGRATED	537-229	Sediment	SOIL	09-Dec-03	FS	POM-E-537-229-0	0	0.5	Feet	T	7439976	MERCURY	73.031	73.031	MG/KG	1
UPL_XRF_537_2003-2004	MIGRATED	537-236	Sediment	SOIL	15-Dec-03	FS	POM-E-537-236-0	0	0.5	Feet	T	7439976	MERCURY	73.949	73.949	MG/KG	1
SAM93-10	MIGRATED	537-153	Sediment	SEDIMENT	21-Apr-93	FS	537-153-0	0	0.5	Feet	T	7439976	MERCURY	75.4	75.4	MG/KG	1
SAM93-11	MIGRATED	537-163	Sediment	SEDIMENT	14-Apr-93	FS	537-163-0	0	0.5	Feet	T	7439976	MERCURY	ND (75.9)	75.9	MG/KG	0
ABD HG DELIN SAMP RND 8 6/05	DDR	537-373	Sediment	SEDIMENT	08-Jun-05	FS	POM-E-537-373(1.5-2.0)	1.5	2	Feet	T	7439976	MERCURY	78.3	78.3	MG/KG	1
SAM93-10	MIGRATED	537-199	Sediment	SEDIMENT	29-Apr-93	FS	537-199-0	0	0.5	Feet	T	7439976	MERCURY	78.9	78.9	MG/KG	1
SAM90-20	MIGRATED	537-38	Sediment	SEDIMENT	25-Jun-90	FS	537-38-6	0.5	1	Feet	T	7439976	MERCURY	79.8	79.8	MG/KG	1
SAM93-11	MIGRATED	537-173	Sediment	SEDIMENT	16-Apr-93	FS	537-173-0	0	0.5	Feet	T	7439976	MERCURY	79.9	79.9	MG/KG	1
ABD HG DELIN SAMP RND 2 8/04	DDR	537-286	Sediment	SEDIMENT	26-Aug-04	FS	POM-E-537-286(.75-1.25)	0.75	1.25	Feet	T	7439976	MERCURY	80.6 J	80.6	MG/KG	1
SAM93-11	MIGRATED	537-179	Sediment	SEDIMENT	19-Apr-93	FS	537-179-0	0	0.5	Feet	T	7439976	MERCURY	80.8	80.8	MG/KG	1
ABD HG DELIN SAMP RND 6 12/04	DDR	537-332	Sediment	SEDIMENT	13-Jan-05	FS	POM-E-537-332(0.75-1.25)	0.75	1.25	Feet	T	7439976	MERCURY	81.2	81.2	MG/KG	1
ABD HG DELIN SAMP RND 3 10/04	DDR	537-300	Sediment	SEDIMENT	30-Sep-04	FS	POM-E-537-300(1.5-2.0)	1.5	2	Feet	T	7439976	MERCURY	81.9 J	81.9	MG/KG	1
UPL_XRF_537_2003-2004	MIGRATED	537-223	Sediment	SOIL	09-Dec-03	FS	POM-E-537-223-0	0	0.5	Feet	T	7439976	MERCURY	81.934	81.934	MG/KG	1
UPL_XRF_537_2003-2004	MIGRATED	537-207	Sediment	SOIL	09-Dec-03	FS	POM-E-537-207-0	0	0.5	Feet	T	7439976	MERCURY	83.928	83.928	MG/KG	1
SAM90-20	MIGRATED	537-41	Sediment	SEDIMENT	25-Jun-90	FS	537-41-6	0.5	1	Feet	T	7439976	MERCURY	84.2	84.2	MG/KG	1
SAM93-11	MIGRATED	537-170	Sediment	SEDIMENT	14-Apr-93	FS	537-170-0	0	0.5	Feet	T	7439976	MERCURY	86	86	MG/KG	1
SAM90-20	MIGRATED	537-34	Sediment	SEDIMENT	14-Jun-90	FS	537-34-68	5.6	6.1	Feet	T	7439976	MERCURY	86.5	86.5	MG/KG	1
SAM93-10	MIGRATED	537-159	Sediment	SEDIMENT	13-Apr-93	FS	537-159-0	0	0.5	Feet	T	7439976	MERCURY	87.1	87.1	MG/KG	1
SAM93-11	MIGRATED	537-193	Sediment	SEDIMENT	20-Apr-93	FS	537-193-0	0	0.5	Feet	T	7439976	MERCURY	87.2	87.2	MG/KG	1
SAM90-20	MIGRATED	537-13	Sediment	SEDIMENT	25-Jun-90	FS	537-13-6	0.5	1	Feet	T	7439976	MERCURY	88.3	88.3	MG/KG	1
SAM90-38	MIGRATED	537-94	Sediment	SEDIMENT	26-Sep-90	FS	537-94-0	0	0.5	Feet	T	7439976	MERCURY	88.8	88.8	MG/KG	1
SAM90-41	MIGRATED	537-143	Sediment	SEDIMENT	05-Oct-90	FS	537-143-18	1.5	2	Feet	T	7439976	MERCURY	89	89	MG/KG	1
ABD LL HG SAMPLING 8/04	DDR	537-214	Sediment	SEDIMENT	14-Aug-04	FS	POM-E-537-214	0	0	Feet	T	7439976	MERCURY	89.165	89.165	MG/KG	1
SAM90-20	MIGRATED	537-50	Sediment	SEDIMENT	12-Jun-90	FS	537-50-49	4.1	4.6	Feet	T	7439976	MERCURY	89.4	89.4	MG/KG	1
SAM90-38	MIGRATED	537-79	Sediment	SEDIMENT	25-Sep-90	FS	537-79-0	0	0.5	Feet	T	7439976	MERCURY	90.1	90.1	MG/KG	1
UPL_XRF_537_2003-2004	MIGRATED	537-252	Sediment	SOIL	21-Dec-03	FS	POM-E-537-252-0	0	0.5	Feet	T	7439976	MERCURY	90.642	90.642	MG/KG	1
UPL_XRF_537_2003-2004	MIGRATED	537-213	Sediment	SOIL	09-Dec-03	FS	POM-E-537-213-0	0	0.5	Feet	T	7439976	MERCURY	90.716	90.716	MG/KG	1
ABD HG TOTAL VNDRBLT 1/08	DDR	537-91	Sediment	SEDIMENT	01-Feb-08	FS	POM-E-537-91	0	0	Feet	T	7439976	MERCURY	90.8	90.8	MG/KG	1
SAM93-10	MIGRATED	537-149	Sediment	SEDIMENT	21-Apr-93	FS	537-149-0	0	0.5	Feet	T	7439976	MERCURY	91.1	91.7	MG/KG	1
SAM93-11	MIGRATED	537-175	Sediment	SEDIMENT	16-Apr-93	FS	537-175-0	0	0.5	Feet	T	7439976	MERCURY	93.7	93.1	MG/KG	1
SAM90-20	MIGRATED	537-47	Sediment	SEDIMENT	25-Jun-90	FS	537-47-6	0.5	1	Feet	T	7439976	MERCURY	93.8	93.8	MG/KG	1
SAM93-11	MIGRATED	537-176	Sediment	SEDIMENT	16-Apr-93	FS	537-176-0	0	0.5	Feet	T	7439976	MERCURY	94.9	94.9	MG/KG	1
ABD HG TOTAL VNDRBLT 1/08	DDR	537-273	Sediment	SEDIMENT	31-Jan-08	FS	POM-E-537-273	0	0	Feet	T	7439976	MERCURY	95.1	95.1	MG/KG	1
SAM90-20	MIGRATED	537-7	Sediment	SEDIMENT	07-Jun-90	FS	537-7-0	0	0.5	Feet	T	7439976	MERCURY	97.1	97.1	MG/KG	1
SAM93-10	MIGRATED	537-150	Sediment	SEDIMENT	21-Apr-93	FS	537-150-0	0	0.5	Feet	T	7439976	MERCURY	97.7	97.7	MG/KG	1
UPL_XRF_537_2003-2004	MIGRATED	537-250	Sediment	SOIL	21-Dec-03	DUP	POM-E-537-250-ODUP	0	0.5	Feet	T	7439976	MERCURY	98.082	98.082	MG/KG	1
SAM90-20	MIGRATED	537-6	Sediment	SEDIMENT	07-Jun-90	FS	537-6-0	0	0.5	Feet	T	7439976	MERCURY	98.3	98.3	MG/KG	1
ABD HG DELIN SAMP RND 3 10/04	DDR	537-300	Sediment	SEDIMENT	30-Sep-04	DUP	POM-E-537-300(1.5-2.0)-DUP	1.5	2	Feet	T	7439976	MERCURY	99.3	99	MG/KG	1
ABD HG DELIN SAMP RND 13 6/06	DDR	537-425	Sediment	SEDIMENT	15-Jun-06	FS	POM-E-537-425(1.2-1.7)	1.2	1.7	Feet	T	7439976	MERCURY	99.8	99.8	MG/KG	1
SAM90-20	MIGRATED	537-50	Sediment	SEDIMENT	25-Jun-90	FS	537-50-6	0.5	1	Feet	T	7439976	MERCURY	100	100	MG/KG	1
ABD HG DELIN SAMP RND 9 8/05	DDR	537-382	Sediment	SEDIMENT	29-Aug-05	FS	POM-E-537-382(6-12)	0.5	1	Feet	T	7439976	MERCURY	101 J	101	MG/KG	1
ABD HG DELIN SAMP RND 13 6/06	DDR	537-423	Sediment	SEDIMENT	15-Jun-06	DUP	POM-E-537-423(0.6-1.1)-DUP	0.6	1.1	Feet	T	7439976	MERCURY	102	102	MG/KG	1
UPL_XRF_537_2003-2004	MIGRATED	537-219	Sediment	SOIL	09-Dec-03	FS	POM-E-537-219-0	0	0.5	Feet	T	7439976	MERCURY	102.802	102.802	MG/KG	1
UPL_XRF_537_2003-2004	MIGRATED	537-209	Sediment	SOIL	09-Dec-03	FS	POM-E-537-209-0	0	0.5	Feet	T	7439976	MERCURY	103.33	103.33	MG/KG	1
SAM90-20	MIGRATED	537-38	Sediment	SEDIMENT	13-Jun-90	FS	537-38-36	3	3.5	Feet	T	7439976	MERCURY	109	109	MG/KG	1
UPL_XRF_537_2003-2004	MIGRATED	537-242	Sediment	SOIL	21-Dec-03	FS	POM-E-537-242-0	0	0.5	Feet	T	7439976	MERCURY	109.023	109.023	MG/KG	1
SAM93-11	MIGRATED	537-191	Sediment	SEDIMENT	15-Apr-93	FS	537-191-12	1	1.5	Feet	T	7439976	MERCURY	109.4	109.4	MG/KG	1
UPL_XRF_537_2003-2004	MIGRATED	537-244	Sediment	SOIL	21-Dec-03	FS	POM-E-537-244-0	0	0.5	Feet	T	7439976	MERCURY	109.516	109.516	MG/KG	1
ABD HG DELIN SAMP RND 10 12/05	DDR	537-403	Sediment	SEDIMENT	01-Dec-05	FS	POM-E-537-403(1.5-2.0)	1.5	2	Feet	T	7439976	MERCURY	110	110	MG/KG	1
SAM93-11	MIGRATED	537-168	Sediment	SEDIMENT	14-Apr-93	FS	537-168-0	0	0.5	Feet	T	7439976	MERCURY	111.4	111.4	MG/KG	1
UPL_XRF_537_2003-2004	MIGRATED	537-221	Sediment	SOIL	09-Dec-03	FS	POM-E-537-221-0	0	0.5	Feet	T	7439976	MERCURY	111.554	111.554	MG/KG	1
SAM93-10	MIGRATED	537-107B	Sediment	SEDIMENT	22-Apr-93	FS	537-107-12</										

**Attachment 2
Pompton Lakes Sediment Concentrations**

PROJECT	STATUS	SRCNAME	THEME	SAMPLE_MATRIX	DATESMPL	SMPLT	SAMPLE_NUMBER	TOP	BOTTOM	DepthUnit	FILTERED	CASNO	ANALYTE	RsltPost	RsltVal	UNITS	Hlt
SAM90-20	MIGRATED	537-35	Sediment	SEDIMENT	25-Jun-90	FS	537-35-6	0.5	1	Feet	T	7439976	MERCURY	128	128	MG/KG	1
UPL_XRF_537_2003-2004	MIGRATED	537-226	Sediment	SOIL	09-Dec-03	FS	POM-E-537-226-0	0	0.5	Feet	T	7439976	MERCURY	128.098	128.098	MG/KG	1
SAM90-41	MIGRATED	537-131	Sediment	SEDIMENT	04-Oct-90	FS	537-131-0	0	0.5	Feet	T	7439976	MERCURY	130	130	MG/KG	1
SAM90-20	MIGRATED	537-42	Sediment	SEDIMENT	14-Jun-90	FS	537-42-48	4	4.5	Feet	T	7439976	MERCURY	132	132	MG/KG	1
SAM93-11	MIGRATED	537-115	Sediment	SEDIMENT	21-Apr-93	FS	537-115-0	0	0.5	Feet	T	7439976	MERCURY	132	132	MG/KG	1
UPL_XRF_537_2003-2004	MIGRATED	537-218	Sediment	SOIL	09-Dec-03	FS	POM-E-537-218-0	0	0.5	Feet	T	7439976	MERCURY	132.208	132.208	MG/KG	1
SAM90-20	MIGRATED	537-41	Sediment	SEDIMENT	14-Jun-90	FS	537-41-48	4	4.5	Feet	T	7439976	MERCURY	133	133	MG/KG	1
UPL_XRF_537_2003-2004	MIGRATED	537-265	Sediment	SOIL	28-Dec-03	FS	POM-E-537-265-0	0	0.5	Feet	T	7439976	MERCURY	133.17	133.17	MG/KG	1
SAM93-10	MIGRATED	537-145	Sediment	SEDIMENT	16-Apr-93	FS	537-145-0	0	0.5	Feet	T	7439976	MERCURY	133.5	133.5	MG/KG	1
SAM90-20	MIGRATED	537-42	Sediment	SEDIMENT	14-Jun-90	FS	537-42-24	2	2.5	Feet	T	7439976	MERCURY	134	134	MG/KG	1
SAM90-20	MIGRATED	537-43	Sediment	SEDIMENT	14-Jun-90	FS	537-43-48	4	4.5	Feet	T	7439976	MERCURY	134	134	MG/KG	1
SAM93-11	MIGRATED	537-187	Sediment	SEDIMENT	20-Apr-93	DUP	537-187-0DUP	0	0.5	Feet	T	7439976	MERCURY	134.3	134.3	MG/KG	1
ABD HG DELIN SAMP RND 8 6/05	DDR	537-372	Sediment	SEDIMENT	08-Jun-05	FS	POM-E-537-372(1.5-2.0)	1.5	2	Feet	T	7439976	MERCURY	135	135	MG/KG	1
ABD HG DELIN SAMP RND 9 8/05	DDR	537-381	Sediment	SEDIMENT	29-Aug-05	FS	POM-E-537-381(12-20)	1	1.67	Feet	T	7439976	MERCURY	135 J	135	MG/KG	1
SAM93-11	MIGRATED	537-188	Sediment	SEDIMENT	20-Apr-93	FS	537-188-0	0	0.5	Feet	T	7439976	MERCURY	135.2	135.2	MG/KG	1
SAM93-11	MIGRATED	537-186	Sediment	SEDIMENT	20-Apr-93	FS	537-186-0	0	0.5	Feet	T	7439976	MERCURY	135.5	135.5	MG/KG	1
SAM90-20	MIGRATED	537-34	Sediment	SEDIMENT	14-Jun-90	FS	537-34-24	2	2.5	Feet	T	7439976	MERCURY	136	136	MG/KG	1
SAM90-20	MIGRATED	537-19	Sediment	SEDIMENT	08-Jun-90	FS	537-19-25	2	2.5	Feet	T	7439976	MERCURY	137	137	MG/KG	1
SAM90-20	MIGRATED	537-4	Sediment	SEDIMENT	05-Jun-90	FS	537-4-18	1.5	2	Feet	T	7439976	MERCURY	137	137	MG/KG	1
SAM90-41	MIGRATED	537-140	Sediment	SEDIMENT	12-Oct-90	FS	537-140-96	8	8.5	Feet	T	7439976	MERCURY	140	140	MG/KG	1
SAM90-20	MIGRATED	537-8	Sediment	SEDIMENT	08-Jun-90	FS	537-8-0	0	0.5	Feet	T	7439976	MERCURY	147	147	MG/KG	1
SAM90-38	MIGRATED	537-119	Sediment	SEDIMENT	28-Sep-90	FS	537-119-0	0	0.5	Feet	T	7439976	MERCURY	147	147	MG/KG	1
SAM93-10	MIGRATED	537-105B	Sediment	SEDIMENT	23-Apr-93	FS	537-105-0	0	0.5	Feet	T	7439976	MERCURY	147	147	MG/KG	1
SAM90-41	MIGRATED	537-140	Sediment	SEDIMENT	12-Oct-90	FS	537-140-0	0	0.5	Feet	T	7439976	MERCURY	148	148	MG/KG	1
SAM90-20	MIGRATED	537-138	Sediment	SEDIMENT	11-Jun-90	FS	537-138-0	0	0.5	Feet	T	7439976	MERCURY	149	149	MG/KG	1
SAM93-11	MIGRATED	537-185	Sediment	SEDIMENT	16-Apr-93	FS	537-185-12	1	1.5	Feet	T	7439976	MERCURY	153.4	153.4	MG/KG	1
SAM90-20	MIGRATED	537-26	Sediment	SEDIMENT	11-Jun-90	FS	537-26-0	0	0.5	Feet	T	7439976	MERCURY	155	155	MG/KG	1
SAM90-20	MIGRATED	537-49	Sediment	SEDIMENT	25-Jun-90	FS	537-49-6	0.5	1	Feet	T	7439976	MERCURY	155	155	MG/KG	1
SAM90-38	MIGRATED	537-98	Sediment	SEDIMENT	27-Sep-90	FS	537-98-18	1.5	2	Feet	T	7439976	MERCURY	155	155	MG/KG	1
UPL_XRF_537_2003-2004	MIGRATED	537-204	Sediment	SOIL	09-Dec-03	FS	POM-E-537-204-0	0	0.5	Feet	T	7439976	MERCURY	157.158	157.158	MG/KG	1
SAM93-11	MIGRATED	537-184	Sediment	SEDIMENT	21-Apr-93	FS	537-184-0	0	0.5	Feet	T	7439976	MERCURY	158	158	MG/KG	1
SAM93-10	MIGRATED	537-156	Sediment	SEDIMENT	20-Apr-93	FS	537-156-0	0	0.5	Feet	T	7439976	MERCURY	159.1	159.1	MG/KG	1
ABD HG DELIN SAMP RND 11 5/06	DDR	537-411	Sediment	SEDIMENT	02-May-06	FS	POM-E-537-411(1.6-2.2)	1.6	2.2	Feet	T	7439976	MERCURY	160	160	MG/KG	1
SAM90-20	MIGRATED	537-45	Sediment	SEDIMENT	25-Jun-90	FS	537-45-6	0.5	1	Feet	T	7439976	MERCURY	160	160	MG/KG	1
SAM90-41	MIGRATED	537-139	Sediment	SEDIMENT	11-Oct-90	FS	537-139-18	1.5	2	Feet	T	7439976	MERCURY	161	161	MG/KG	1
SAM90-20	MIGRATED	537-40	Sediment	SEDIMENT	14-Jun-90	FS	537-40-24	2	2.5	Feet	T	7439976	MERCURY	162	162	MG/KG	1
SAM90-38	MIGRATED	537-60	Sediment	SEDIMENT	21-Sep-90	FS	537-60-0	0	0.5	Feet	T	7439976	MERCURY	164	164	MG/KG	1
SAM93-10	MIGRATED	537-152	Sediment	SEDIMENT	20-Apr-93	FS	537-152-0	0	0.5	Feet	T	7439976	MERCURY	166.7	166.7	MG/KG	1
SAM90-20	MIGRATED	537-21	Sediment	SEDIMENT	08-Jun-90	FS	537-21-39	3.25	3.75	Feet	T	7439976	MERCURY	167	167	MG/KG	1
UPL_XRF_537_2003-2004	MIGRATED	537-267	Sediment	SOIL	28-Dec-03	FS	POM-E-537-267-0	0	0.5	Feet	T	7439976	MERCURY	167.779	167.779	MG/KG	1
SAM90-20	MIGRATED	537-52	Sediment	SEDIMENT	25-Jun-90	FS	537-52-6	0.5	1	Feet	T	7439976	MERCURY	170	170	MG/KG	1
SAM90-20	MIGRATED	537-33	Sediment	SEDIMENT	25-Jun-90	FS	537-33-6	0.5	1	Feet	T	7439976	MERCURY	171	171	MG/KG	1
SAM90-38	MIGRATED	537-62	Sediment	SEDIMENT	21-Sep-90	FS	537-62-0	0	0.5	Feet	T	7439976	MERCURY	172	172	MG/KG	1
SAM90-38	MIGRATED	537-116	Sediment	SEDIMENT	28-Sep-90	FS	537-116-0	0	0.5	Feet	T	7439976	MERCURY	174	174	MG/KG	1
SAM90-20	MIGRATED	537-42	Sediment	SEDIMENT	14-Jun-90	FS	537-42-0	0	0.5	Feet	T	7439976	MERCURY	175	175	MG/KG	1
UPL_XRF_537_2003-2004	MIGRATED	537-248	Sediment	SOIL	21-Dec-03	FS	POM-E-537-248-0	0	0.5	Feet	T	7439976	MERCURY	175.965	175.965	MG/KG	1
SAM90-20	MIGRATED	537-34	Sediment	SEDIMENT	25-Jun-90	FS	537-34-6	0.5	1	Feet	T	7439976	MERCURY	176	176	MG/KG	1
SAM90-20	MIGRATED	537-33	Sediment	SEDIMENT	14-Jun-90	FS	537-33-48	4	4.5	Feet	T	7439976	MERCURY	177	177	MG/KG	1
ABD HG DELIN SAMP RND 6 12/04	DDR	537-331	Sediment	SEDIMENT	13-Jan-05	FS	POM-E-537-331(1.0-1.5)	1	1.5	Feet	T	7439976	MERCURY	179	179	MG/KG	1
SAM90-20	MIGRATED	537-17	Sediment	SEDIMENT	25-Jun-90	FS	537-17-6	0.5	1	Feet	T	7439976	MERCURY	181	181	MG/KG	1
SAM93-10	MIGRATED	537-155	Sediment	SEDIMENT	13-Apr-93	FS	537-155-0	0	0.5	Feet	T	7439976	MERCURY	183.7	183.7	MG/KG	1
ABD HG DELIN SAMP RND 3 10/04	DDR	537-296	Sediment	SEDIMENT	29-Sep-04	FS	POM-E-537-296(1.5-2)	1.5	2	Feet	T	7439976	MERCURY	188 J	188	MG/KG	1
SAM90-20	MIGRATED	537-1	Sediment	SEDIMENT	05-Jun-90	FS	537-1-0	0	0.5	Feet	T	7439976	MERCURY	188	188	MG/KG	1
UPL_XRF_537_2003-2004	MIGRATED	537-212	Sediment	SOIL	09-Dec-03	FS	POM-E-537-212-0	0	0.5	Feet	T	7439976	MERCURY	188.515	188.515	MG/KG	1
SAM90-20	MIGRATED	537-45	Sediment	SEDIMENT	14-Jun-90	FS	537-45-48	4	4.5	Feet	T	7439976	MERCURY	191	191	MG/KG	1
ABD HG DELIN SAMP RND 12 5/06	DDR	537-416	Sediment	SEDIMENT	25-May-06	DUP	POM-E-537-416(1.5-2.0)-DUP	1.5	2	Feet	T	7439976	MERCURY	194	194	MG/KG	1
SAM90-20	MIGRATED	537-16	Sediment	SEDIMENT	09-Jun-90	FS	537-16-24	2	2.5	Feet	T	7439976	MERCURY	197	197	MG/KG	1
SAM93-11	MIGRATED	537-192	Sediment	SEDIMENT	15-Apr-93	FS	537-192-12	1	1.5	Feet	T	7439976	MERCURY	199.5	199.5	MG/KG	1
SAM90-20	MIGRATED	537-17	Sediment	SEDIMENT	09-Jun-90	FS	537-17-0	0	0.5	Feet	T	7439976	MERCURY	200	200	MG/KG	1
SAM90-41	MIGRATED	537-103	Sediment	SEDIMENT	01-Oct-90	FS	537-103-0	0	0.5	Feet	T	7439976	MERCURY	201	201	MG/KG	1
SAM90-20	MIGRATED	537-46	Sediment	SEDIMENT	15-Jun-90	FS	537-46-68	5.6	6.1	Feet	T	7439976	MERCURY	204	204	MG/KG	1
SAM90-20	MIGRATED	537-26	Sediment	SEDIMENT	25-Jun-90	FS	537-26-6	0.5	1	Feet	T	7439976	MERCURY	205	205	MG/KG	1
SAM93-10	MIGRATED	537-147	Sediment	SEDIMENT	20-Apr-93	FS	537-147-0	0	0.5	Feet	T	7439976	MERCURY	207.4	207.4	MG/KG	1
UPL_XRF_537_2003-2004	MIGRATED	537-215	Sediment	SOIL	09-Dec-03	FS	POM-E-537-215-0	0	0.5	Feet	T	7439976	MERCURY	210.991	210.991	MG/KG	1
SAM90-20	MIGRATED	537-41	Sediment	SEDIMENT	14-Jun-90	FS	537-41-0	0	0.5	Feet	T	7439976	MERCURY	211	211	MG/KG	1
ABD HG DELIN SAMP RND 3 10/04	DDR	537-299	Sediment	SEDIMENT	30-Sep-04	FS	POM-E-537-299(1.5-2.0)	1.5	2	Feet	T	7439976	MERCURY	215 J	215	MG/KG	1
SAM90-38	MIGRATED	537-100	Sediment	SEDIMENT	27-Sep-90	FS	537-100-0	0	0.5	Feet	T	7439976	MERCURY	224	224	MG/KG	1
SAM93-11	MIGRATED	53															

**Attachment 2
Pompton Lakes Sediment Concentrations**

PROJECT	STATUS	SRCNAME	THEME	SAMPLE_MATRIX	DATESMPL	SMPLT	SAMPLE_NUMBER	TOP	BOTTOM	DepthUnit	FILTERED	CASNO	ANALYTE	RsltPost	RsltVal	UNITS	Hit
UPL_XRF_537_2003-2004	MIGRATED	537-210	Sediment	SOIL	09-Dec-03	FS	POM-E-537-210-0	0	0.5	Feet	T	7439976	MERCURY	330.589	330.589	MG/KG	1
SAM90-38	MIGRATED	537-106	Sediment	SEDIMENT	27-Sep-90	DUP	537-106-0DUP	0	0	Feet	T	7439976	MERCURY	333	333	MG/KG	1
SAM90-41	MIGRATED	537-141	Sediment	SEDIMENT	08-Oct-90	FS	537-141-0	0	0.5	Feet	T	7439976	MERCURY	351	351	MG/KG	1
SAM90-41	MIGRATED	537-141	Sediment	SEDIMENT	08-Oct-90	DUP	537-141-0DUP	0	0.5	Feet	T	7439976	MERCURY	351	351	MG/KG	1
ABD HG DELIN SAMP RND 1 8/04	DDR	537-273	Sediment	SEDIMENT	02-Aug-04	FS	POM-E-537-273(2-2.5)	2	2.5	Feet	T	7439976	MERCURY	353 J	353	MG/KG	1
ABD HG DELIN SAMP RND 12 5/06	DDR	537-416	Sediment	SEDIMENT	25-May-06	FS	POM-E-537-416(1.5-2.0)	1.5	2	Feet	T	7439976	MERCURY	353	353	MG/KG	1
UPL_XRF_537_2003-2004	MIGRATED	537-214	Sediment	SOIL	09-Dec-03	FS	POM-E-537-214-0	0	0.5	Feet	T	7439976	MERCURY	357.675	357.675	MG/KG	1
ABD HG DELIN SAMP RND 1 8/04	DDR	537-273	Sediment	SEDIMENT	02-Aug-04	FS	POM-E-537-273(1-1.5)	1	1.5	Feet	T	7439976	MERCURY	359 J	359	MG/KG	1
ABD HG DELIN RND 20 4/07	DDR	537-494	Sediment	SEDIMENT	23-Apr-07	FS	POM-E-537-494(1.8-2.3)	1.8	2.3	Feet	T	7439976	MERCURY	361	361	MG/KG	1
UPL_XRF_537_2003-2004	MIGRATED	537-216	Sediment	SOIL	09-Dec-03	FS	POM-E-537-216-0	0	0.5	Feet	T	7439976	MERCURY	361.43	361.43	MG/KG	1
ABD HG DELIN SAMP RND 7 4/05	DDR	537-339	Sediment	SEDIMENT	19-Apr-05	FS	POM-E-537-339(0-0.5)	0	0.5	Feet	T	7439976	MERCURY	367 J	367	MG/KG	1
ABD HG DELIN SAMP RND 1 8/04	DDR	537-272	Sediment	SEDIMENT	02-Aug-04	FS	POM-E-537-272(1.25-1.75)	1.25	1.75	Feet	T	7439976	MERCURY	369 J	369	MG/KG	1
SAM90-20	MIGRATED	537-40	Sediment	SEDIMENT	14-Jun-90	DUP	537-40-48DUP	4	4.5	Feet	T	7439976	MERCURY	370	370	MG/KG	1
SAM93-10	MIGRATED	537-148	Sediment	SEDIMENT	19-Apr-93	FS	537-148-12	1	1.5	Feet	T	7439976	MERCURY	373.5	373.5	MG/KG	1
SAM90-38	MIGRATED	537-56	Sediment	SEDIMENT	21-Sep-90	FS	537-56-0	0	0.5	Feet	T	7439976	MERCURY	378	378	MG/KG	1
UPL_XRF_537_2003-2004	MIGRATED	537-222	Sediment	SOIL	09-Dec-03	FS	POM-E-537-222-0	0	0.5	Feet	T	7439976	MERCURY	383.945	383.945	MG/KG	1
SAM93-11	MIGRATED	537-171	Sediment	SEDIMENT	16-Apr-93	FS	537-171-0	0	0.5	Feet	T	7439976	MERCURY	388.4	388.4	MG/KG	1
ABD HG DELIN SAMP RND 9 8/05	DDR	537-381	Sediment	SEDIMENT	29-Aug-05	FS	POM-E-537-381(6-12)	0.5	1	Feet	T	7439976	MERCURY	394 J	394	MG/KG	1
SAM90-41	MIGRATED	537-132	Sediment	SEDIMENT	04-Oct-90	FS	537-132-18	1.5	2	Feet	T	7439976	MERCURY	394	394	MG/KG	1
SAM90-41	MIGRATED	537-143	Sediment	SEDIMENT	05-Oct-90	FS	537-1431-72	6	6.5	Feet	T	7439976	MERCURY	402	402	MG/KG	1
SAM90-20	MIGRATED	537-41	Sediment	SEDIMENT	14-Jun-90	FS	537-41-24	2	2.5	Feet	T	7439976	MERCURY	405	405	MG/KG	1
SAM90-20	MIGRATED	537-49	Sediment	SEDIMENT	12-Jun-90	FS	537-49-24	2	2.5	Feet	T	7439976	MERCURY	415	415	MG/KG	1
SAM93-10	MIGRATED	537-147	Sediment	SEDIMENT	20-Apr-93	FS	537-147-12	1	1.5	Feet	T	7439976	MERCURY	416.4	416.4	MG/KG	1
SAM90-38	MIGRATED	537-98	Sediment	SEDIMENT	27-Sep-90	FS	537-98-0	0	0.5	Feet	T	7439976	MERCURY	424	424	MG/KG	1
SAM93-10	MIGRATED	537-157	Sediment	SEDIMENT	23-Apr-93	FS	537-157-0	0	0.5	Feet	T	7439976	MERCURY	426	426	MG/KG	1
SAM90-20	MIGRATED	537-28	Sediment	SEDIMENT	11-Jun-90	FS	537-28-0	0	0.5	Feet	T	7439976	MERCURY	431	431	MG/KG	1
SAM90-20	MIGRATED	537-43	Sediment	SEDIMENT	14-Jun-90	FS	537-43-68	5.6	6.1	Feet	T	7439976	MERCURY	449	449	MG/KG	1
SAM90-20	MIGRATED	537-45	Sediment	SEDIMENT	14-Jun-90	FS	537-45-24	2	2.5	Feet	T	7439976	MERCURY	451	451	MG/KG	1
SAM90-41	MIGRATED	537-130	Sediment	SEDIMENT	04-Oct-90	FS	537-130-0	0	0.5	Feet	T	7439976	MERCURY	462	462	MG/KG	1
SAM90-20	MIGRATED	537-33	Sediment	SEDIMENT	14-Jun-90	FS	537-33-68	5.6	6.1	Feet	T	7439976	MERCURY	481	481	MG/KG	1
UPL_XRF_537_2003-2004	MIGRATED	537-222	Sediment	SOIL	09-Dec-03	DUP	POM-E-537-222-0DUP	0	0.5	Feet	T	7439976	MERCURY	495.737	495.737	MG/KG	1
ABD HG DELIN SAMP RND 3 10/04	DDR	537-297	Sediment	SEDIMENT	29-Sep-04	FS	POM-E-537-297(1.5-2.0)	1.5	2	Feet	T	7439976	MERCURY	509 J	509	MG/KG	1
ABD HG DELIN SAMP RND 2 8/04	DDR	537-285	Sediment	SEDIMENT	26-Aug-04	FS	POM-E-537-285-(1.0-1.5)	1	1.5	Feet	T	7439976	MERCURY	510 J	510	MG/KG	1
SAM90-20	MIGRATED	537-45	Sediment	SEDIMENT	14-Jun-90	FS	537-45-0	0	0.5	Feet	T	7439976	MERCURY	511	511	MG/KG	1
SAM90-20	MIGRATED	537-48	Sediment	SEDIMENT	12-Jun-90	FS	537-48-52	4.3	4.8	Feet	T	7439976	MERCURY	512	512	MG/KG	1
SAM90-20	MIGRATED	537-47	Sediment	SEDIMENT	15-Jun-90	FS	537-47-0	0	0.5	Feet	T	7439976	MERCURY	517	517	MG/KG	1
SAM90-20	MIGRATED	537-40	Sediment	SEDIMENT	14-Jun-90	FS	537-40-48	4	4.5	Feet	T	7439976	MERCURY	558	558	MG/KG	1
SAM90-38	MIGRATED	537-112	Sediment	SEDIMENT	27-Sep-90	FS	537-112-0	0	0.5	Feet	T	7439976	MERCURY	571	571	MG/KG	1
SAM90-38	MIGRATED	537-123	Sediment	SEDIMENT	28-Sep-90	FS	537-123-0	0	0.5	Feet	T	7439976	MERCURY	590	590	MG/KG	1
SAM90-20	MIGRATED	537-44	Sediment	SEDIMENT	14-Jun-90	FS	537-44-18	1.5	2	Feet	T	7439976	MERCURY	594	594	MG/KG	1
UPL_XRF_537_2003-2004	MIGRATED	537-228	Sediment	SOIL	09-Dec-03	FS	POM-E-537-228-0	0	0.5	Feet	T	7439976	MERCURY	600.324	600.324	MG/KG	1
ABD HG DELIN SAMP RND 4 10/04	DDR	537-312	Sediment	SEDIMENT	26-Oct-04	FS	POM-E-537-312(1-1.5)	1	1.5	Feet	T	7439976	MERCURY	608	608	MG/KG	1
SAM90-38	MIGRATED	537-91	Sediment	SEDIMENT	26-Sep-90	FS	537-91-0	0	0.5	Feet	T	7439976	MERCURY	630	630	MG/KG	1
SAM90-38	MIGRATED	537-95	Sediment	SEDIMENT	26-Sep-90	FS	537-95-0	0	0.5	Feet	T	7439976	MERCURY	632	632	MG/KG	1
SAM90-38	MIGRATED	537-113	Sediment	SEDIMENT	27-Sep-90	FS	537-113-0	0	0.5	Feet	T	7439976	MERCURY	657	657	MG/KG	1
SAM90-20	MIGRATED	537-46	Sediment	SEDIMENT	15-Jun-90	FS	537-46-0	0	0.5	Feet	T	7439976	MERCURY	663	663	MG/KG	1
SAM90-20	MIGRATED	537-22	Sediment	SEDIMENT	09-Jun-90	FS	537-22-0	0	0.5	Feet	T	7439976	MERCURY	666	666	MG/KG	1
SAM90-20	MIGRATED	537-23	Sediment	SEDIMENT	09-Jun-90	FS	537-23-0	0	0.5	Feet	T	7439976	MERCURY	668	668	MG/KG	1
UPL_XRF_537_2003-2004	MIGRATED	537-250	Sediment	SOIL	21-Dec-03	FS	POM-E-537-250-0	0	0.5	Feet	T	7439976	MERCURY	669.686	669.686	MG/KG	1
SAM90-41	MIGRATED	537-141	Sediment	SEDIMENT	08-Oct-90	FS	537-141-18	1.5	2	Feet	T	7439976	MERCURY	672	672	MG/KG	1
UPL_XRF_537_2003-2004	MIGRATED	537-205	Sediment	SOIL	09-Dec-03	FS	POM-E-537-205-0	0	0.5	Feet	T	7439976	MERCURY	696.525	696.525	MG/KG	1
ABD HG DELIN SAMP RND 5 11/04	DDR	537-322	Sediment	SEDIMENT	22-Nov-04	FS	POM-E-537-322(1.25-1.75)	1.25	1.75	Feet	T	7439976	MERCURY	754 J	754	MG/KG	1
SAM90-41	MIGRATED	537-104	Sediment	SEDIMENT	02-Oct-90	FS	537-104-0	0	0.5	Feet	T	7439976	MERCURY	761	761	MG/KG	1
SAM90-20	MIGRATED	537-44	Sediment	SEDIMENT	14-Jun-90	FS	537-44-24	2	2.5	Feet	T	7439976	MERCURY	786	786	MG/KG	1
SAM90-38	MIGRATED	537-114	Sediment	SEDIMENT	28-Sep-90	FS	537-114-0	0	0.5	Feet	T	7439976	MERCURY	792	792	MG/KG	1
SAM90-38	MIGRATED	537-106	Sediment	SEDIMENT	27-Sep-90	FS	537-106-0	0	0.5	Feet	T	7439976	MERCURY	814	814	MG/KG	1
SAM93-10	MIGRATED	537-107B	Sediment	SEDIMENT	22-Apr-93	DUP	537-107-12DUP	1	1.5	Feet	T	7439976	MERCURY	820	820	MG/KG	1
SAM90-20	MIGRATED	537-9	Sediment	SEDIMENT	07-Jun-90	FS	537-9-40	3.3	3.8	Feet	T	7439976	MERCURY	847	847	MG/KG	1
SAM93-10	MIGRATED	537-153	Sediment	SEDIMENT	21-Apr-93	FS	537-153-12	1	1.5	Feet	T	7439976	MERCURY	849	849	MG/KG	1
SAM90-20	MIGRATED	537-34	Sediment	SEDIMENT	14-Jun-90	FS	537-34-48	4	4.5	Feet	T	7439976	MERCURY	926	926	MG/KG	1
SAM90-20	MIGRATED	537-38	Sediment	SEDIMENT	13-Jun-90	FS	537-38-68	5.6	6.1	Feet	T	7439976	MERCURY	1150	1150	MG/KG	1
SAM90-38	MIGRATED	537-95	Sediment	SEDIMENT	26-Sep-90	DUP	537-95-0DUP	0	0	Feet	T	7439976	MERCURY	1190	1190	MG/KG	1
SAM90-38	MIGRATED	537-65	Sediment	SEDIMENT	21-Sep-90	FS	537-65-0	0	0.5	Feet	T	7439976	MERCURY	1200	1200	MG/KG	1
SAM93-10	MIGRATED	537-154	Sediment	SEDIMENT	14-Apr-93	FS	537-154-12	1	1.5	Feet	T	7439976	MERCURY	1326	1326	MG/KG	1
SAM90-20	MIGRATED	537-36	Sediment	SEDIMENT	14-Jun-90	FS	537-36-0	0	0.5	Feet	T	7439976	MERCURY	1450	1450	MG/KG	1
UPL_XRF_537_2003-2004	MIGRATED	537-208	Sediment	SOIL	09-Dec-03	FS	POM-E-537-208-0	0	0.5	Feet	T	7439976	MERCURY	1485.969	1485.969	MG/KG	1
SAM90-20	MIGRATED	537-40	Sediment	SEDIMENT	14-Jun-90	FS	537-40-36	3	3.5</								