

The U.S. Environmental Protection Agency (EPA) recognizes the overall environmental benefit of siting renewable energy projects on contaminated properties. Through the [RE-Powering America's Land Initiative](#), EPA is encouraging the reuse of formerly contaminated lands, landfills, and mine sites for renewable energy development when such development is aligned with the community's vision for the site.

Using publicly available information, RE-Powering maintains a list of completed renewable energy installations on contaminated sites and landfills. To date, the RE-Powering Initiative has identified 253 renewable energy installations on 238 contaminated lands, landfills, and mine sites, with a cumulative installed capacity of 1,398 megawatts (MW) and consistent growth in total installations since the inception of the RE-Powering Initiative. Approximately 69.5% of these installations are large-scale systems with a project capacity of 1 MW or more, either exporting energy onto the utility grid, offsetting onsite energy demands, or powering cleanup. This document provides summary statistics of known installations and discusses emerging trends.

In addition to the completed sites listed here, EPA is tracking more than 100 renewable energy projects on contaminated or disturbed properties in various stages of planning, approval, or construction. These include a 5-MW solar project for installation on a Brattleboro, VT landfill; three separate solar installations in planning for brownfield and landfill sites at the Naval Station Newport in Newport, RI; and a 12-MW solar installation on a landfill in Annapolis, MD, where officials recently held a job fair to hire construction workers for the project. In addition, EPA is aware of more than 80 other potential renewable energy projects on contaminated sites, primarily landfills that have been suggested at town council or public meetings.

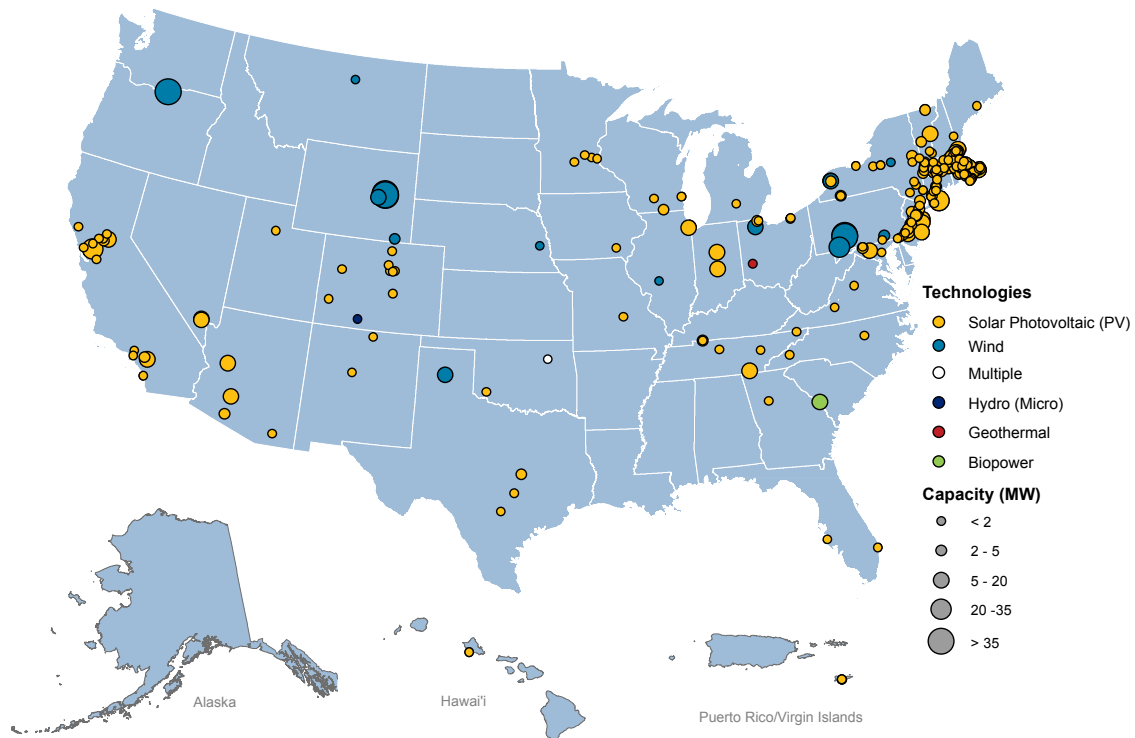
**RE-Powering America's
Land Initiative**

To provide information on renewable energy on contaminated land projects not currently appearing in this document, email cleanenergy@epa.gov.

To receive updates, newsletters, and other information about the RE-Powering program:

Subscribe
 EPA's RE-Powering Listserv

253 Renewable Energy Projects, Nearly 1.4 Gigawatt Installed Capacity



This map is for informational purposes only. The information was gathered from public announcements of renewable energy projects in the form of company press releases, news releases, and, in some cases, conversations with the parties involved. This map may not be a comprehensive representation of all completed renewable energy projects on contaminated lands. To provide information on additional projects, please email cleanenergy@epa.gov.

October 2017

¹ In this document, *installation* and *project* refer to a single renewable energy technology installation, while *site* and *location* refer to a single contaminated property. A *site* or *location* may have more than one *installation* or *project*. For example, the former Dave Johnston Mine (one *site*) has three separate wind *installations*. Multiple installation details can be seen in the tracking spreadsheet at the end of this document.

National Deployment

RE-Powering has identified installations of renewable energy on contaminated lands, landfills, and mine sites in 40 states and territories. The locations of these installations reflect evolving trends generally linked to available renewable energy resource as well as incentives or policies such as Renewable Portfolio Standards (RPSs), tax exemptions, net metering laws, and others. Policy data in this section are from the [Database for State Incentives for Renewables and Efficiency](#) (DSIRE), a comprehensive database managed by the North Carolina Clean Energy Technology Center and funded by the U.S. Department of Energy. DSIRE compiles renewable energy and energy efficiency incentives and policies enacted by the federal government, state governments, U.S. territories, local governments, and large utilities. The DSIRE website allows users to search policies [by state](#) and provides quarterly [summary maps](#).

INSTALLATIONS BY STATE OR TERRITORY ²						
State	# Installations	Installed Capacity (MW)	State Renewable Portfolio Standard ³	Solar Set-Aside Policy ⁴	Solar Multiplier Policy ⁵	Distributed Generation Requirement ⁶
MA	98	257.6	✓	✓		
NY	21	91.0	✓			✓
NJ	20	119.9	✓	✓		
CA	16	133.5	✓			
CO	9	7.3	✓		✓	✓
CT	7	7.7	✓			
PA	6	178.5	✓	✓		
OH	6	11.7	✓	✓		
WY	5	295.8				
VT	5	12.3	✓			✓
AZ	4	30.0	✓		✓	✓
MD	4	24.3	✓	✓		
TX	4	14.6	✓ ⁷		✓ ⁸	
TN	4	10.1				
MN	4	0.5	✓	✓ ⁹		✓
WI	3	2.9	✓			
NV	2	28.2	✓	✓	✓	
IN	2	17.8				
IL	2	10.9	✓	✓		✓
KY	2	5.0				
NM	2	3.0	✓	✓		✓
FL	2	2.3				
VA	2	1.6	✓ ¹⁰			
DE	2	0.7	✓	✓	✓	
NC	2	0.6	✓	✓		
OK	2	0.0	✓ ¹¹			
OR	1	100.0	✓	✓	✓	✓ ¹²
RoUS ¹³	16	29.9				
TOTAL	253	1,397.7				

² Table includes states with multiple installations plus the state with the largest single installation. Policy information from DSIRE (www.dsireusa.org). Accessed October 23, 2017.

³ A renewable portfolio standard (RPS) requires utilities to use or procure a certain percentage of total generation from renewable sources.

⁴ A solar set-aside requires a certain percentage of the state's electricity be generated from solar resources. Some states call them "solar carve-outs."

⁵ A solar multiplier gives additional credit for solar projects that contribute toward meeting RPS requirements.

⁶ A distributed generation requirement obliges a utility to procure a certain percentage of electricity from renewable, customer-sited sources.

⁷ Texas has already achieved its 2025 RPS goal. The state also had a voluntary non-wind generation goal that expired in 2015 and has been exceeded.

⁸ Texas has a non-wind multiplier policy, which includes solar, but is not *specific* to solar. The non-wind multiplier is active through 2019, when the state's REC trading program is currently set to expire.

⁹ Minnesota's solar carve-out is divided by utility. The overall carve-out is 1.5% for solar for public utilities by the end of 2020, 10% of which must come from solar PV systems with capacity if 20 kW or more. Xcel Energy, however, is required to have at least 25% of retail electricity sales generated by wind energy or solar energy systems by 2020, with solar limited to no more than 1% of this additional requirement.

¹⁰ Virginia has a voluntary renewable portfolio goal that provides an [enhanced rate of return](#) for renewable generation from approved projects.

¹¹ Oklahoma's RPS is a goal, not a requirement.

¹² Oregon's RPS includes a goal that, by 2025, at least 8% of the state's electrical load comes from small-scale, community renewable energy installations with capacities of 20 MW or less. The RPS also includes a multiplier for PV systems with a capacity of 500 kW to 5 MW installed prior to January 1, 2016.

¹³ For purposes of this report, RoUS (Rest of US) indicates 13 other states or territories with renewable energy on contaminated lands: Georgia, Hawaii, Iowa, Maine, Michigan, Missouri, Montana, Nebraska, New Hampshire, Rhode Island, South Carolina, U.S. Virgin Islands, and Utah.

RE-Powering Updates its RE on CL Mapping Tool

The RE-Powering America's Land Initiative recently launched the RE-Powering Mapper 2.0. The updated Mapper is a web-based geographic information tool that provides location data for over 80,000 contaminated lands, landfills and mine sites, collected from state and federal sources that have been pre-screened for renewable energy potential. The RE-Powering Mapper 2.0 is an online interactive web application that allows users to visualize RE-Powering information about each site.

Points are generated for contaminated lands, landfills and mine sites from the best available latitude and longitude data. Attached to each point are attributes which describe the site and its renewable energy potential. Within the Mapper, you may choose to look at sites that have initially screened suitable for solar, wind, biomass/ biofuel and geothermal energy potential.

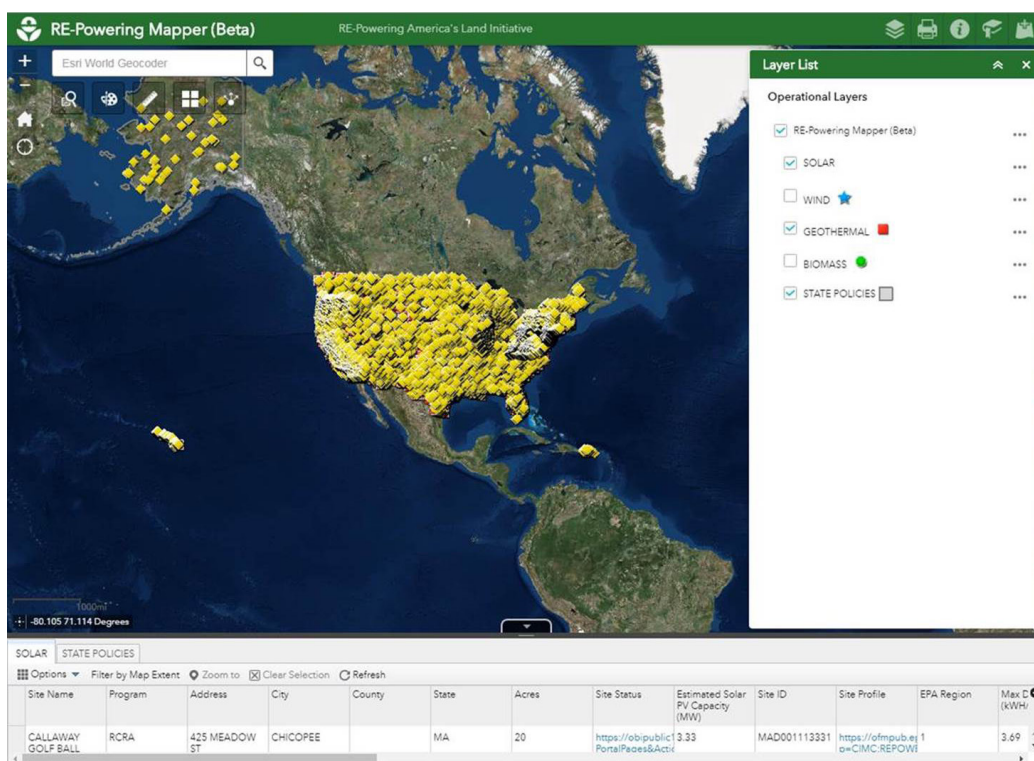
The Mapper is now hosted online. As such, the application can be reached directly from the RE-Powering website and does not require the user to download any additional software. Additional new features include a map-table connection that allows attribute data associated with the point data to be viewed and analyzed at the same time. Users can sort and filter the attribute table from the web application and immediately visualize the results in the map. Users can also export these attributes into an Excel Spreadsheet for additional analysis.

Visit RE-Powering's [Mapper 2.0](#) to see features including:

- Screening results for more than 80,000 sites for solar, wind , biomass, and geothermal energy
- Options to search by attributes including state, acreage, estimated renewable energy capacity, distance to nearest urban area, and more
- Site-specific screening reports
- Links to the EPA or state programs managing the site clean-up.

Mapper Technical Documents and Datasets

The RE-Powering Mapper website provides links to Technical Support documents for the Mapper. These include the [Full User Guide](#), a [Quick Start Guide](#) with basic instructions on using the Mapper, and [Data Documentation for Mapping and Screening](#) that describes the datasets, criteria, and methodology EPA used to create its tools. The site also features fact sheets that describe various renewable energy technologies and technical potential for each: [solar](#), [wind](#), [biomass](#), and [geothermal](#). The RE-Powering Screening Datasets and geodatabases are also linked on the [Mapper home page](#).



Screenshot of RE-Powering's Mapper 2.0

RE on CL Offers a Range of Economic Benefits

RE on CL provides a number of [benefits](#) to the communities within which the sites are built, from making productive use of degraded land to offering economic benefits to municipalities. Such economic benefits include lease payments, taxes or Payments in Lieu of Taxes (PILOT), jobs, and lower energy costs. Some examples include:

Iron Horse Park / Dow Solar – This Superfund site in Billerica, MA, used to be a chemical manufacturing plant. Today, it houses a [3.68-MW solar project](#) that generates electricity for four school systems and one local government using virtual net metering, supplying an average of 20 percent of the users' energy needs at below-utility rates. The system also avoids producing nearly 6.9 million pounds of carbon dioxide, the equivalent of burning more than 3.3 million pounds of coal annually.

Falmouth Landfill – Fifty (50) jobs were created during the installation of this 4-MW solar installation on a former landfill in Falmouth, MA. Through tax and lease revenue as well as energy cost savings, [the system](#) is anticipated to provide total economic benefit of more than \$14 million to the community over the life of the project.

Fort Dix Solar – The U.S. Army's Fort Dix (Joint Base McGuire-Dix-Lakehurst) in New Jersey is now home to a 16.5-MW solar installation located on a portion of the base that is designated Superfund. The [solar project](#) will produce enough energy to power 1,500 homes, reducing more than 15,000 metric tons of carbon dioxide emissions—the equivalent of removing 3,000 cars from the road.

North Haven Landfill Solar – This capped landfill in North Haven, CT, is now host to a 0.368-MW [solar project](#) that helps power the city's wastewater treatment facility and helps the city meet its green energy goals.

Solar Installations on Contaminated Sites Help Department of Defense Realize RE Goals, Cost Savings

Two U.S. Department of Defense (DoD) facilities recently celebrated the completion of solar installations on contaminated land sites. The U.S. Army's **Fort Campbell** base in Kentucky [completed the second phase](#) of a 5-MW total solar project with a 3.1-MW installation on a base landfill. The base's initial 1.9-MW solar on landfill project was completed in 2015.

This \$19.5 million phase two installation uses a 27-year power purchasing agreement with developer BITHENERGY. Phase two also received an \$800,000 U.S. Department of Energy Federal Energy Management Program AFFECT grant (Assisting Federal Facilities with Energy Conservation Technologies). Phase one of the project was completed under a [Utility Energy Services Contract](#), or UESC.

The combined 30 acres of solar help Fort Campbell meet its government mandates to reduce energy intensity by 30 percent by 2030. Fort Campbell plans to [repurpose the energy savings](#) from the solar installation to fund training for soldiers.

The DoD also marked the completion of a 16.5-MW [solar project](#) at Joint Base McGuire-Dix-Lakehurst in Pemberton Township, NJ (commonly known as Fort Dix). The solar project is installed on a designated Superfund landfill site that was formerly used for mess hall grease and grease trap cleansers, as well as sludges, waste paints and thinners, and pesticides.

The installation was developed as part of the U.S. Air Force's Enhanced Use Lease program, which is designed to create mutually beneficial commercial projects on Air Force land. The solar array will produce more than [21,000 megawatt-hours](#) of renewable energy every year – enough to power more than 2,500 homes.

To date, the Fort Dix installation is the [largest military solar project](#) in the Northeast.

2017 Brownfields Conference



The [Brownfields 2017](#) conference is scheduled for **December 5–7, 2017**, in Pittsburgh, PA, with pre-conference programming on December 4. The bi-annual conference is the largest of its type and is cosponsored by EPA and the International City/County Management Association.

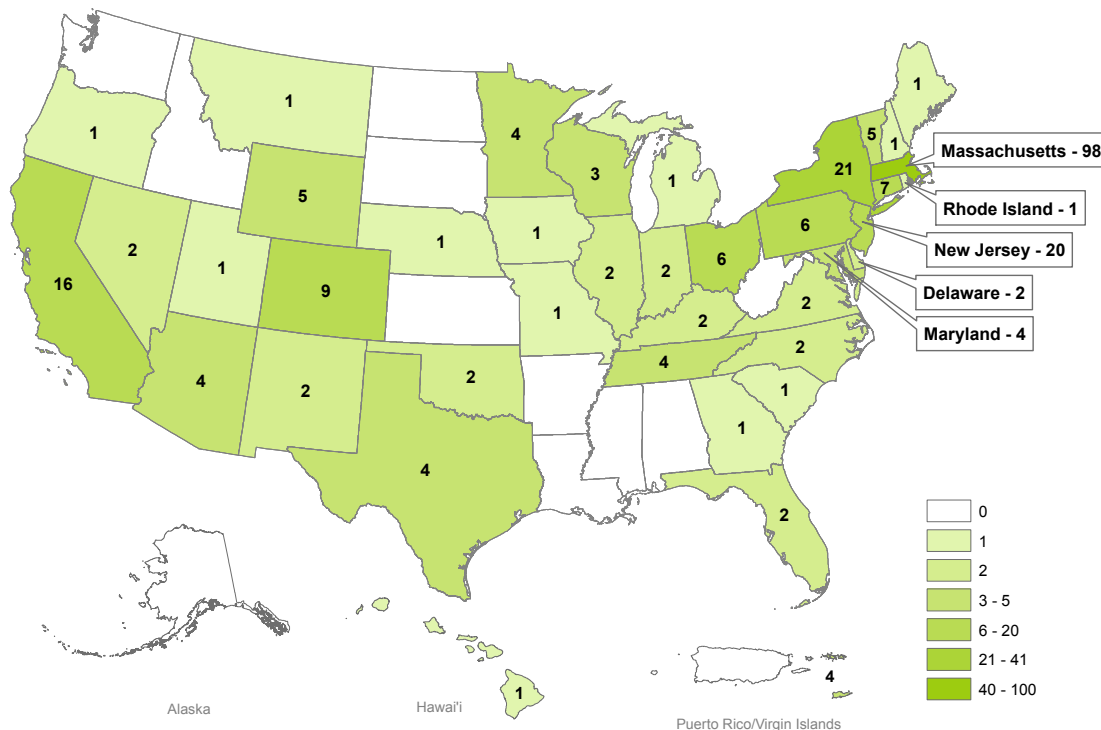
The event convenes stakeholders interested in the cleanup and reuse of former commercial and industrial sites, including federal, state, and local government leaders; real estate developers and investors; financial and insurance providers; construction firms; risk management practitioners; engineers; economic and community development professionals; and others. The keynote speaker for the 2017 event is John Paul Farmer, Founder and CEO of The Innovation Project and Director of Technology and Civic Innovation for Microsoft.

Conference sessions will cover topics including landfill reuse, cleanup compliance, grants and financing, and state brownfields programs.

Numerous EPA representatives will present at the event, including RE-Powering Program Manager Adam Klinger for an educational session titled, *"Purchasing Power —Renewables on Brownfields."* The RE-Powering team will also be in the RE-Powering America's Land booth in the exhibit hall. Be sure to stop by and say hello!

For a complete schedule of events, venue and exhibiting details, and to register, visit the [Brownfields 2017 website](#).

40 States and Territories Have Renewable Energy Projects on Contaminated Lands



This map is for informational purposes only. The information was gathered from public announcements of renewable energy projects in the form of company press releases, news releases, and, in some cases, conversations with the parties involved. This map may not be a comprehensive representation of all completed renewable energy projects on contaminated lands. To provide information on additional projects, please email cleanenergy@epa.gov.

October 2017

RE on CL Around the Globe

Several recent examples illustrate a global shift toward evaluating the reuse of brownfields and mine sites for renewable energy. In [Australia](#), for example, 320 MW of solar are planned for one of the country's largest open-cut gold mines, the Kidston gold mine, which closed in 2001. The state government of Victoria also announced \$100,000 in funding to assess the feasibility of a solar-pumped hydro energy storage project at the historic Goldfields mine in Bendigo. In Noamundi, India, Tata Steel recently [commissioned](#) a 3-MW solar installation on an iron ore mine, the first such installation in the country. These examples demonstrate growing interest worldwide in reviving former mine lands and other contaminated sites into renewable energy facilities.

Former Mine Sites Revived as Solar Energy Powerhouses

A 1,400-acre abandoned copper mine and designated [Superfund site](#) in Strafford, VT, is now host to nearly 20,000 solar panels. The developers of the 7-MW Elizabeth Mine project, Brightfields and Greenwood Energy, [used](#) local civil, mechanical, and electrical contractors, driving employment for local economies during installation. Electricity generated by the site is sufficient to power 1,200 homes annually and will avoid producing 6,000 tons of carbon dioxide annually, equal to emissions from the combustion of 14,000 barrels of oil.

The solar installation also contributed to grid upgrades that will overall benefit reliability of the local grid. The mine site and its solar project are located in a remote rural area, so getting the solar array connected to utility Green Mountain Power required upgrades of approximately 4 miles of utility lines and 10 miles of dedicated fiber optic communications line, as well as an upgrade to the regional substation. Green Mountain Power also upgraded three-phase lines up through the town of Strafford as part of its reliability improvement program.

Clean-up of sulfuric acid, metallic tailings, and other contaminants at the Elizabeth Mine site is on-going. The state's Agency of Natural Resources is responsible for site maintenance.

The Elizabeth Mine site joins a number of other RE installations on mine sites, including 276 MW of wind installed at the former Dave Johnston Mine in Wyoming, 15 MW of solar at Bagdad Mine in Arizona, and 137.5 MW of wind on the former Highland strip mine in Pennsylvania. Completion of the Elizabeth Mine site also aligns with recent announcements of other RE projects planned for former mine sites, including 50–100 MW of solar being discussed for former surface mine sites in Kentucky and an uptick in such projects globally (see “RE on CL Around the Globe” text box). If the Kentucky project comes to fruition, it would be [the first of its kind in Appalachia](#).



Clifton Park landfill solar installation. Photo courtesy of EPA Region 2.

Saratoga County Celebrates Completion of Two RE on CL Sites

Saratoga County, NY, is now home to two solar projects recently completed on landfill sites. The first installation is on the Weibel Avenue landfill owned by the town of Saratoga Springs, and the second is at the former Vischer Ferry Landfill in Clifton Park, NY.

The 2.5-MW Weibel Ave. solar project is located on 14.6 acres of the former landfill and was installed at no cost to the city through a 20-year power purchase agreement developed by Onyx Renewable Partners. The solar panels will provide the city with electricity credits from National Grid and is expected to supply the city [with approximately 40%](#) of their overall energy needs and to [offset](#) approximately 1,605 metric tons of carbon dioxide emissions annually. The project was [supported in part](#) by a NY-Sun grant from the New York State Energy Research and Development Authority (NYSERDA).

In Clifton Park, NY, a 1-MW [solar installation](#) now resides atop 4 acres of capped town landfill. According to town officials, energy generated by the system is estimated to be equivalent to 90% of the town's energy usage. The town could realize potential savings of \$1.75 million over 25 years via remote net metering credits from utility National Grid. Similar to the Weibel Ave. Landfill solar project, the Clifton Park project was supported by NYSERDA funding.

Inside the Numbers

Based on current trends, 74% of the renewable energy systems identified in the tracking matrix sell power back to the grid as wholesale electricity, while a subset provides energy for onsite use. Systems range from utility-scale systems, like the 25.4-MW solar installation at a former steel mill landfill in Pittsburg, CA, to smaller projects like the 0.384-MW landfill solar project in North Haven, CT, which powers the city's wastewater treatment facility.

RE-Powering capitalizes on the opportunity to address contamination and support renewable energy implementation to achieve the associated economic and environmental benefits. Installations to date demonstrate the viability of projects across all EPA and state remediation programs, from powering industrial facilities at sites subject to [RCRA corrective action](#) to offsetting the energy demands at [federal facilities](#) with ongoing cleanup activities to repurposing [brownfield](#) and [Superfund](#) sites.

Overview	
Total # of sites	238
Total # of installations	253
Total installed capacity (MW)	1,398
Total # of states represented	40
Max individual installation size (MW)	118.5
Min individual installation size (MW)	<.001

Installations and Capacity by Site Ownership Type		
	# Installations	Installed Capacity (MW)
Private	94	840.6
Municipal	119	245.2
Federal	20	148.3
Unknown	12	85.3
Public/Private ¹⁷	2	76.7
Other	2	0.9
State	1	0.5
Public	1	0.2
Federal/Municipal	1	0.0
Foundation	1	0.0
Total	253	1,397.7

Installations by Renewable Technology		
	# Installations	Installed Capacity (MW)
Solar PV	225	741.5
Wind	24	636.2
Biomass	1	20.0
Hydro	1	<0.1
Geothermal ¹⁸	2	<0.1
Total	253	1,397.7

Number of Installations by Site Type ¹⁴	
Solar and wind projects on landfills/landfill buffer	156
Renewable energy projects on brownfield sites ¹⁵	45
Renewable energy projects on Superfund sites ¹⁶	36
Renewable energy projects on current/former federal facilities and contaminated properties	21
Renewable energy projects on RCRA corrective action sites	17
Renewable energy projects on mine sites	11

Installations by Energy Use		
	# Installations	Installed Capacity (MW)
Wholesale Electricity	187	1,269.9
Onsite Use - General	31	107.9
Onsite Use - Green Remediation ¹⁹	24	7.8
Rooftop	4	4.7
Local Use	1	3.2
Unknown	3	2.7
Community Owned/Subscription	2	1.0
Onsite Use - Training	1	0.5
Total	253	1,397.7

¹⁴ Some installations can be considered multiple "site types." For example, a Superfund site on a federal facility would be counted both as a Superfund site and as a federal facility for the purposes of this table; however, sites considered to be multiple site types are counted only once when calculating the total number of sites.

¹⁵ Includes state brownfields.

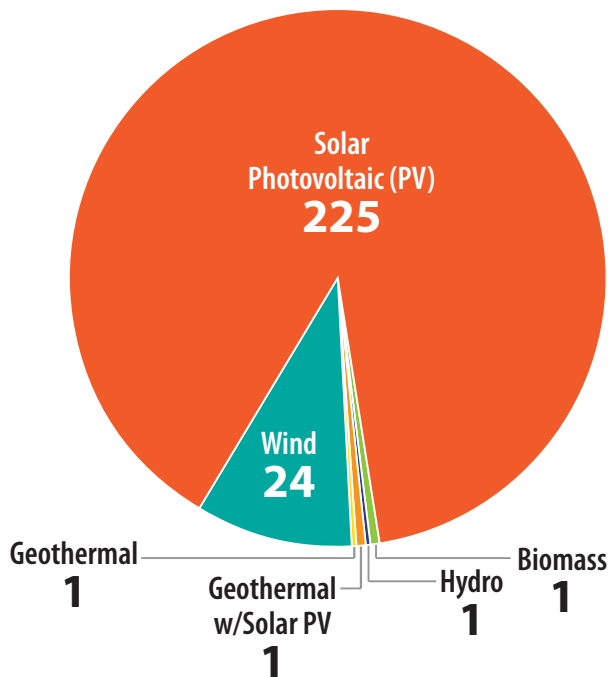
¹⁶ Includes sites subject to the National Priorities List (NPL), non-NPL sites, and sites subject to removal action under Superfund.

¹⁷ This is the Highland North Wind Project in the townships of Adams and Summerhill, PA. The turbines are located on mixed use land, which Everpower notes is held by both [public and private landowners](#).

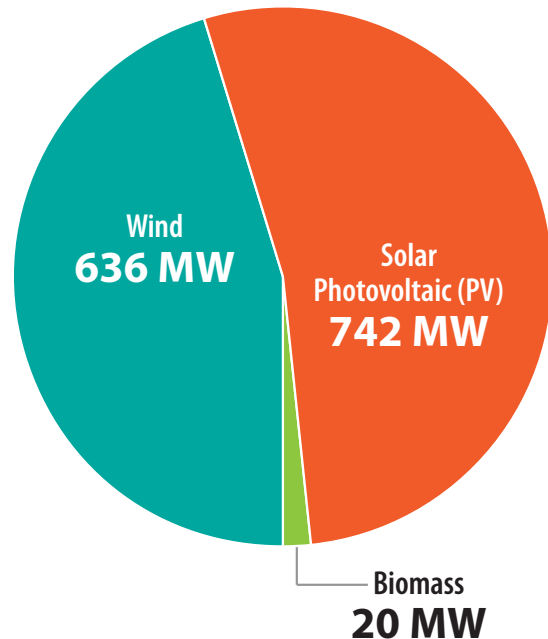
¹⁸ One geothermal project, the Guthrie Green project in Tulsa, OK, uses a small solar array to power the geothermal heat pump.

¹⁹ Green remediation is the practice of considering all environmental effects of remedy implementation and incorporating options to minimize the environmental footprints of cleanup actions. One such practice is using renewable energy systems to power remediation activities or off-set the energy needs associated with cleanup efforts. Projects identified as [On-site Green Remediation](#) include all known projects which currently use or have previously used renewable energy for remediation purposes. This figure may include projects that have ceased operations since being added to the tracking matrix. Capacity includes a 4.5-MW system used to offset groundwater remediation systems at Massachusetts Military Reservation.

Total Projects by Technology



Total Capacity by Technology



Continuing Growth

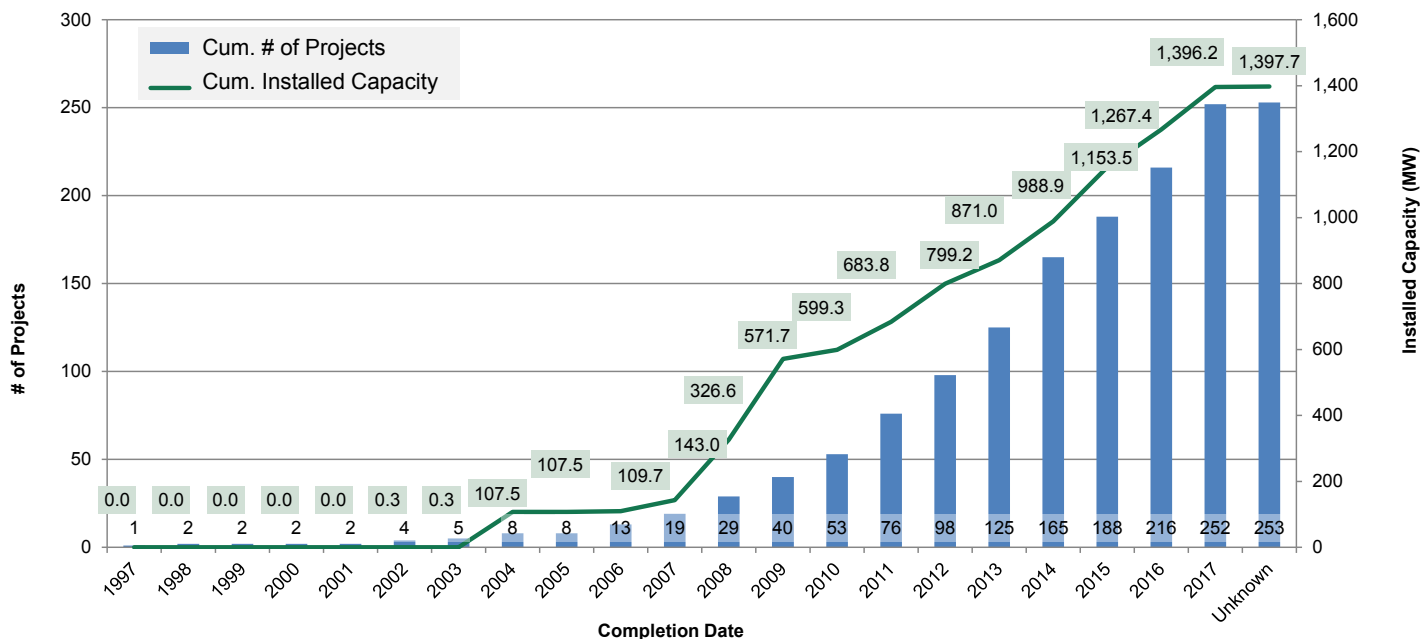
With the exception of one 100-MW wind installation on landfill buffer in Oregon (Columbia Ridge), only 19 projects with a total capacity of 143 MW were installed on contaminated sites through 2007. Of these, many were onsite or green remediation projects, and only four were individually larger than 1 MW. Beginning in 2008, RE-Powering has seen a marked upward trend in terms of the number of new renewable energy projects developed on contaminated lands, the amount of installed capacity produced by these projects, and the number connected to the wholesale electricity grid. These trends demonstrate that communities, developers, and site owners are embracing this sustainable land development strategy.

The range in project sizes reflects market conditions and trends, available acreage, electricity demands, and other variables. Medium- to large-scale installations (1-10 MW) make up 55% of the total number of installed projects to date, while larger systems (10+ MW) comprise 65% of total installed capacity on contaminated lands.

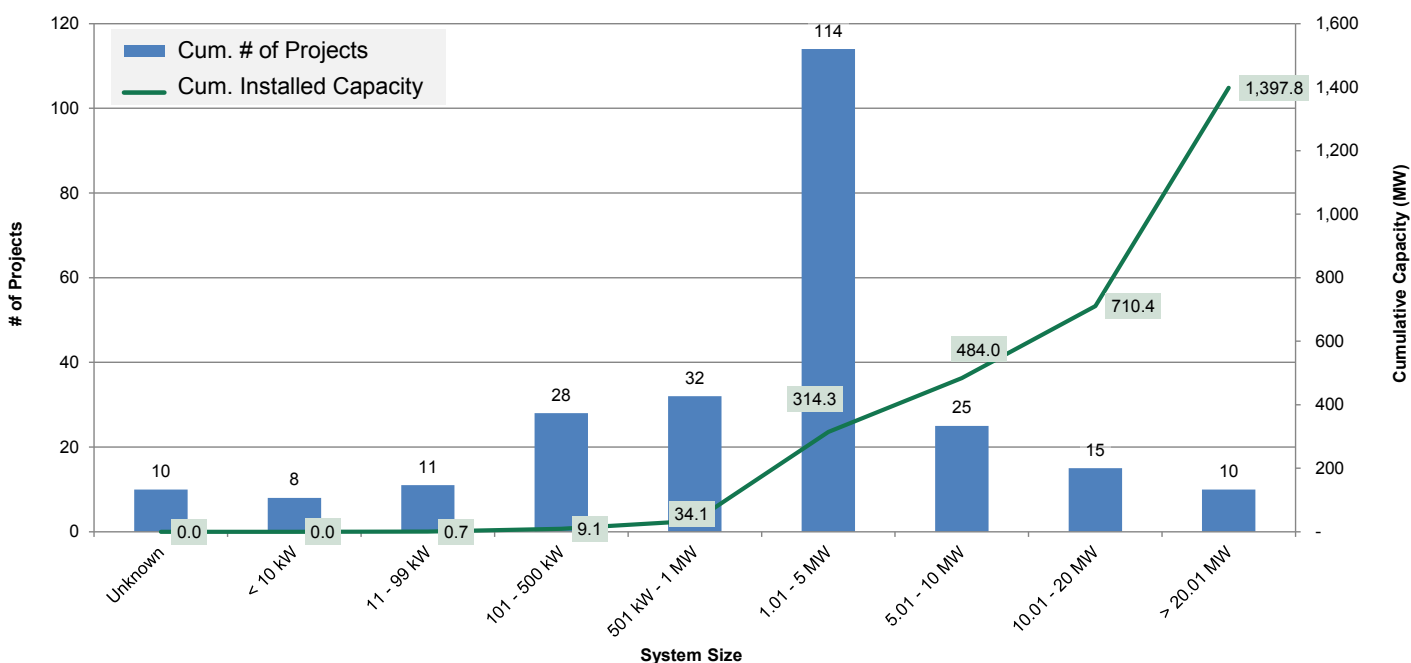
Of identified projects, 87% are solar PV projects developed on contaminated lands, landfills, and mine sites, representing 52% of total installed capacity—the first time since EPA started tracking RE on CL installations that solar projects have represented the majority of total capacity. While wind energy represents only 9.5% of RE on CL projects, a few very large wind installations maintain wind's percentage of installed capacity (about 46%). These include the Casselman Wind Power Project in Somerset County, PA (35 MW); Steel Winds in Bethlehem, NY, (35 MW); Highland Wind (62.5 MW) and Highland North Wind (75 MW) in Cambria County, PA; the wind farm at Columbia Ridge Landfill, Oregon (100 MW); and the three wind farms at the former Dave Johnston Mine in Glenrock, WY (276 MW). Wind tends to be used more often on vast tracts of contaminated land, such as mine sites, while solar PV is the dominant technology at smaller tracts such as municipal solid waste (MSW) landfills.

The RE-Powering strategy bolsters new markets for potentially contaminated lands, while supporting a sustainable land development strategy for renewable energy. One continuing trend is the reuse of former landfills as large solar PV developments. To date, EPA is aware of 150 former landfills that have been returned to productive use as solar projects. Of these, at least 131 (87%) were completed between 2012 and 2017. Many more are being planned or permitted, or are under construction. For more information regarding considerations specific to solar projects on landfills, see RE-Powering's [Best Practices for Siting Solar Photovoltaics on Municipal Solid Waste Landfills](#).

Annual Growth of Completed Installations and Installed Capacity^{21, 22, 23}



Range of System Sizes of Completed Installations²⁴



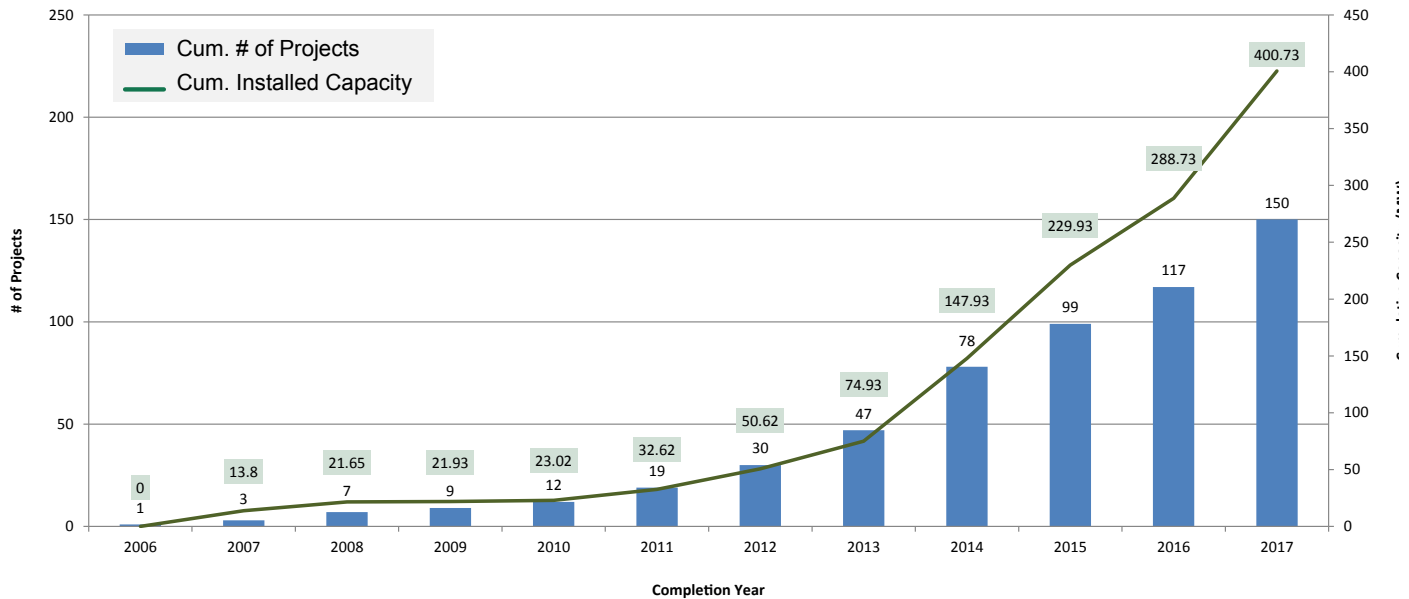
²¹ Note that the growth curve for both the number of sites and cumulative installed capacity differs from previous versions of the Project Tracking Matrix, as the RE-Powering team learns about additional renewable energy projects installed on contaminated lands in previous years.

²² The "Unknown" installation is 1.5 MW of solar installed by Honeywell Corporation as part of the Onondaga Lake cleanup project in Onondaga, NY. The bulk of the cleanup took place in 2010, but the exact completion date of the solar installation is unknown.

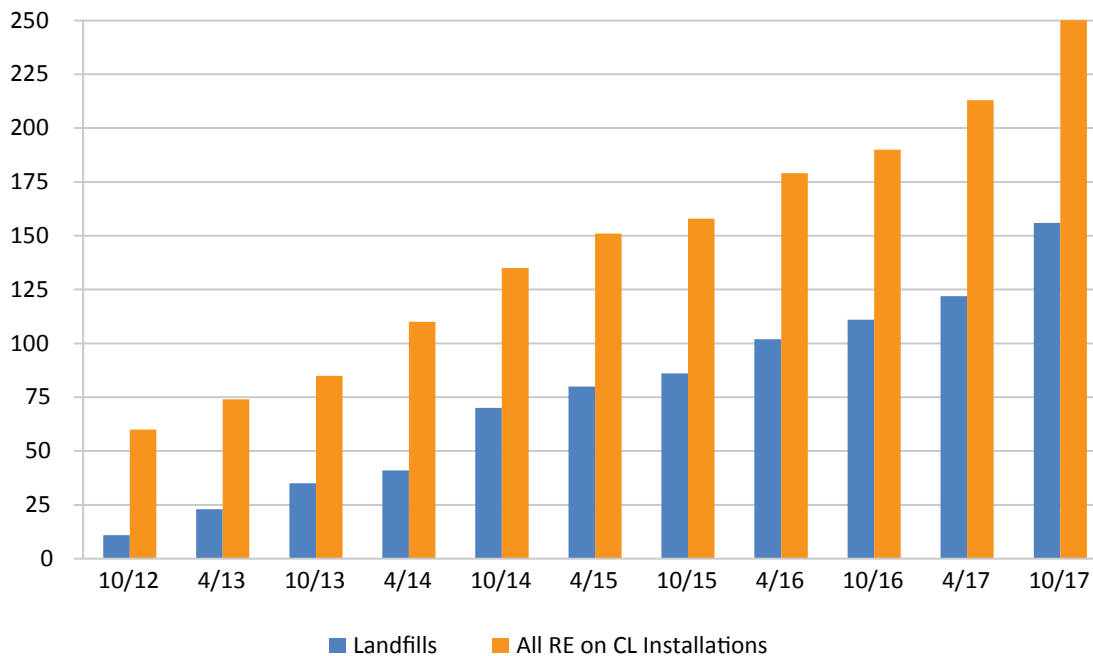
²³ With the exception of one 100-MW wind installation on landfill buffer in Oregon (Columbia Ridge), only 19 projects with a total capacity of 43 MW were installed on contaminated sites through 2007. Of these, many were onsite or green remediation projects, and only four were individually larger than 1 MW.

²⁴ There are ten (10) 1-MW installations in the 501 kW-1 MW capacity range that are included in the percentage of installations at 1 MW or greater (66%) noted on page 1 of this document.

Annual Growth in Solar Installations on Landfill/Landfill Buffer



Annual Growth in Installations on Landfill/Landfill Buffer Compared to All RE on CL Projects²⁵



²⁵ Counts represent total number of projects, not number of sites (locations). Includes projects that may also be designated in the Tracking Matrix as Superfund, Superfund Removal, RCRA, and Brownfields.

RE-Powering America's Land Initiative: Project Tracking Matrix

October 2017

Through the RE-Powering America's Land initiative, the EPA encourages renewable energy development on potentially contaminated land when aligned with the community's vision for the site. This list tracks completed projects where renewable energy systems have been installed on potentially contaminated lands, landfills, or mine sites. Project capacity data reflect total system capacity, which may be installed in whole or in part on potentially contaminated lands, landfills, or mine sites. For systems with an installed capacity less than 10 kW, the capacity is shown as 0.00. Where information was not found for a given site, it is noted as "Unknown" or with a "-" for numerical values. This information is sorted by "State" and then by "Project Name." Installations newly added for October 2017 are highlighted in orange. Projects highlighted in blue represent multiple installations on a single site (location).

This resource is for informational purposes only. The information in this list was gathered from public announcements of renewable energy projects in the form of company press releases, news releases, and, in some cases, conversations with the parties involved. It may not be a comprehensive list of all projects completed on contaminated land. Projects on this list include ground-mounted utility-scale systems, rooftop systems, and systems used for onsite power, including to power cleanup activities. To provide information on additional projects, please email cleanenergy@epa.gov.

1. Site Description									2. Renewable Energy Information				3. Project Implementation			
Site/Project Name	EPA Region	State	City	Type of Site	Site Owner	Site Ownership Type	Property Acreage	Former Use Description	RE Type	Project Capacity (MW)	Project Acreage	Primary RE Developer Name	Completion Date	Project Type	Current/Former Federal Asset	Landfill Application (Cross Program)
Ajo Solar Project	9	AZ	Ajo	Mine Lands	Freeport-McMoRan Copper & Gold Inc.	Private	38	Adjacent to mining	Solar PV	5.00	38.0	Recurrent Energy	2011	Wholesale Electricity	-	-
Apache Powder	9	AZ	Benson	Superfund	Apache Nitrogen Products, Inc.	Private	1,100	Dynamite manufacturing facility	Solar PV	0.00	-	Unknown	1997	Onsite Use - Green Remediation	-	-
Bagdad Mine Solar	9	AZ	Bagdad (census-designated)	Mine Lands	Freeport-McMoRan	Private	21,750	Open-pit copper and molybdenum mine	Solar PV	15.00	24.0	Recurrent Energy	2011	Wholesale Electricity	-	-
Desert Star Solar Plant	9	AZ	Buckeye	Landfill	City of Phoenix	Municipal	2,560	MSW Landfill	Solar PV	10.00	118.0	Arizona Public Service	2015	Wholesale Electricity	-	Yes
Aerojet General Corporation Superfund Site	9	CA	Sacramento	Superfund	Aerojet	Private	5,900	Rocket propulsion development and testing facility	Solar PV	6.00	40.0	Solar Power, Inc.	2010	Wholesale Electricity	-	-
Camp Pendleton Landfill	9	CA	Camp Pendleton	Superfund	U.S. Marine Corps	Federal	28	MSW and Light Industrial Waste Landfill	Solar PV	1.50	5.0	Kyocera Solar	2011	Onsite Use - General	Yes	Yes
Cloverdale Solar	9	CA	Cloverdale	Landfill	Unknown	Unknown	-	Wood Landfill	Solar PV	1.80	-	Greenleaf-TNX	2014	Wholesale Electricity	-	Yes
Fischer Properties: Depot Park	9	CA	Sacramento	Brownfield	Fischer Properties	Private	-	Former U.S. Army Depot	Solar PV	3.00	15.0	SPG Solar	2010	Onsite Use - General	Yes	-
Frontier Fertilizer	9	CA	Davis	Superfund	Frontier Fertilizer	Private	18	Fertilizer and pesticide storage, sales and application	Solar PV	0.07	0.5	Unknown	2011	Onsite Use - Green Remediation	-	-
Lawrence Livermore National Laboratory	9	CA	Livermore	Superfund	U.S. DOE	Federal	7,000	Ranchland, weapons testing range	Solar PV	0.00	-	Unknown	2009	Onsite Use - Green Remediation	Yes	-
Milliken Landfill	9	CA	Ontario	Landfill	County of San Bernardino	Municipal	196	MSW Landfill	Solar PV	3.10	15.0	PV Navigator	2017	Wholesale Electricity	-	Yes
NASA Jet Propulsion Laboratory (JPL)	9	CA	Pasadena	Superfund	NASA	Federal	-		Solar PV	0.56	-	Unknown	2011	Rooftop	Yes	-
Pemaco Superfund Site	9	CA	Maywood	Superfund	City of Maywood	Municipal	1	Custom Chemical Blender	Solar PV	0.01	1.4	Unknown	2007	Onsite Use - Green Remediation	-	-

RE-Powering America's Land Initiative: Project Tracking Matrix

October 2017

Through the RE-Powering America's Land initiative, the EPA encourages renewable energy development on potentially contaminated land when aligned with the community's vision for the site. This list tracks completed projects where renewable energy systems have been installed on potentially contaminated lands, landfills, or mine sites. Project capacity data reflect total system capacity, which may be installed in whole or in part on potentially contaminated lands, landfills, or mine sites. For systems with an installed capacity less than 10 kW, the capacity is shown as 0.00. Where information was not found for a given site, it is noted as "Unknown" or with a "-" for numerical values. This information is sorted by "State" and then by "Project Name." Installations newly added for October 2017 are highlighted in orange. Projects highlighted in blue represent multiple installations on a single site (location).

This resource is for informational purposes only. The information in this list was gathered from public announcements of renewable energy projects in the form of company press releases, news releases, and, in some cases, conversations with the parties involved. It may not be a comprehensive list of all projects completed on contaminated land. Projects on this list include ground-mounted utility-scale systems, rooftop systems, and systems used for onsite power, including to power cleanup activities. To provide information on additional projects, please email cleanenergy@epa.gov.

1. Site Description									2. Renewable Energy Information				3. Project Implementation			
Site/Project Name	EPA Region	State	City	Type of Site	Site Owner	Site Ownership Type	Property Acreage	Former Use Description	RE Type	Project Capacity (MW)	Project Acreage	Primary RE Developer Name	Completion Date	Project Type	Current/Former Federal Asset	Landfill Application (Cross Program)
PSEG Pittsburg Solar Energy Center	9	CA	Pittsburg	RCRA	USS - Posco Industries	Private	115	Steel Mill Landfill	Solar PV	25.40	115.0	PSEG Solar Source	2015	Wholesale Electricity	-	Yes
Regulus Solar Power Plant	9	CA	Bakersfield	Brownfield	Unknown	Unknown	-	Former gas and oil field	Solar PV	82.00	737.0	SunEdison	2015	Wholesale Electricity	-	-
Sutter's Landing Landfill Solar	9	CA	Sacramento	Landfill	City of Sacramento	Municipal	-	MSW Landfill	Solar PV	1.50	-	SMUD/Conergy	2014	Wholesale Electricity	-	Yes
Tequesquite Landfill	9	CA	Riverside	Landfill	City of Riverside	Municipal	120	MSW Landfill	Solar PV	7.50	20.0	Sunpower/RBI Solar	2015	Wholesale Electricity	-	Yes
Travis AFB	9	CA	Near Fairfield	Federal Facility	U.S. Air Force	Federal	6,368	Battery shop / Air Force operations	Solar PV	-	-	CH2M	2008	Onsite Use - Green Remediation	Yes	-
West County Wastewater District	9	CA	Richmond	Brownfield	West County Wastewater District	Municipal	-	Sludge-drying pond	Solar PV	1.00	10.0	Solar Power Partners, Inc.	2008	Onsite Use - General	-	-
Western Regional Sanitary Landfill	9	CA	Lincoln	Landfill	Western Placer Waste Management Authority	Private	-	MSW Landfill	Solar PV	0.09	-	Energy 2011	2017	On-Site Use - General	-	Yes
Aurora/Arapahoe Solar Array	8	CO	Aurora	Brownfield	City of Aurora	Public	5	Adjacent to Buckley AFB	Solar PV	0.50	4.5	Clean Energy Collective	2013	Community Owned / Subscription	-	-
Belmar Mixed-Use Development	8	CO	Lakewood	Brownfield	Mixed Private/Public	Public/Private	48	Shopping mall	Solar PV	1.70	47.5	SunPower Corporation	2008	Rooftop	-	-
Boulder Cowdery Meadows Solar Array	8	CO	Boulder	Superfund	Cowdery Company	Private	4	Landfill buffer to Marshall Landfill Superfund Site	Solar PV	0.50	3.5	Clean Energy Collective	2013	Community Owned / Subscription	-	Yes
Dreher Pickle Plant	8	CO	Fort Collins	Brownfield	City of Fort Collins	Municipal	-	Pickling plant	Solar PV	0.60	-	Clean Energy Collective	2015	Wholesale Electricity	-	-
Fort Carson	8	CO	Fort Carson	RCRA	U.S. Army	Federal	15	Construction Landfill	Solar PV	2.00	12.0	Colorado Springs Utilities	2008	Wholesale Electricity	Yes	Yes
New Rifle Mill	8	CO	Rifle	Other	City of Rifle	Municipal	130	Former DOE uranium processing mill	Solar PV	1.70	12.0	SunEdison	2009	Onsite Use - General	Yes	-
Norwood Landfill Community Solar	8	CO	Norwood	Landfill	Unknown	Unknown	-	MSW Landfill	Solar PV	0.20	-	GRID Alternatives	2016	Wholesale Electricity	-	Yes

RE-Powering America's Land Initiative: Project Tracking Matrix

October 2017

Through the RE-Powering America's Land initiative, the EPA encourages renewable energy development on potentially contaminated land when aligned with the community's vision for the site. This list tracks completed projects where renewable energy systems have been installed on potentially contaminated lands, landfills, or mine sites. Project capacity data reflect total system capacity, which may be installed in whole or in part on potentially contaminated lands, landfills, or mine sites. For systems with an installed capacity less than 10 kW, the capacity is shown as 0.00. Where information was not found for a given site, it is noted as "Unknown" or with a "-" for numerical values. This information is sorted by "State" and then by "Project Name." Installations newly added for October 2017 are highlighted in orange. Projects highlighted in blue represent multiple installations on a single site (location).

This resource is for informational purposes only. The information in this list was gathered from public announcements of renewable energy projects in the form of company press releases, news releases, and, in some cases, conversations with the parties involved. It may not be a comprehensive list of all projects completed on contaminated land. Projects on this list include ground-mounted utility-scale systems, rooftop systems, and systems used for onsite power, including to power cleanup activities. To provide information on additional projects, please email cleanenergy@epa.gov.

1. Site Description									2. Renewable Energy Information				3. Project Implementation			
Site/Project Name	EPA Region	State	City	Type of Site	Site Owner	Site Ownership Type	Property Acreage	Former Use Description	RE Type	Project Capacity (MW)	Project Acreage	Primary RE Developer Name	Completion Date	Project Type	Current/Former Federal Asset	Landfill Application (Cross Program)
Place Bridge Academy	8	CO	Denver	Landfill	Denver Public Schools	Municipal	10	Landfill	Solar PV	0.10	1.5	Namaste Solar	2013	Onsite Use - General	-	Yes
Summitville Mine Superfund Site	8	CO	Del Norte	Superfund	U.S. Forest Service	Federal	1,400	Heap leach gold and silver mining	Hydro	0.03	-	Unknown	2011	Onsite Use - Green Remediation	Yes	-
Bridgeport Landfill	1	CT	Bridgeport	Landfill	City of Bridgeport	Municipal	46	MSW Landfill (1938-91); Construction Landfill (1996-2000)	Solar PV	2.20	22.0	American Capital Energy	2016	Wholesale Electricity	-	Yes
Derby Landfill Solar	1	CT	Derby	Landfill	City of Derby	Municipal	23	MSW Landfill	Solar PV	0.74	6.0	Jordan Energy and BQ Energy	2015	Wholesale Electricity	-	Yes
Evansville Avenue Landfill	1	CT	Meriden	Landfill	City of Meriden	Municipal	-	MSW Landfill	Solar PV	1.10	3.0	Greenskies Renewable Energy LLC	2017	Wholesale Electricity	-	Yes
Fairfield Landfill	1	CT	Fairfield	Landfill	City of Fairfield	Municipal	-	MSW Landfill	Solar PV	1.30	-	Greenskies Renewable Energy, LLC	2017	Wholesale Electricity	-	Yes
Hartford CT Landfill (solar)	1	CT	Hartford	Landfill	City of Hartford	Municipal	96	MSW Landfill	Solar PV	1.00	6.0	Tecta Solar	2014	Wholesale Electricity	-	Yes
North Haven Landfill	1	CT	North Haven	Landfill	City of North Haven	Municipal	-	MSW Landfill	Solar PV	0.38	1.0	Greenskies Renewable Energy	2017	Onsite Use - General	-	Yes
Wintergreen Ave. Landfill	1	CT	Hamden	Landfill	City of Hamden	Municipal	-	MSW Landfill	Solar PV	1.00	5.0	True Green Capital Solar Generation IV	2016	Wholesale Electricity	-	Yes
Dupont Newport	3	DE	Newport	Superfund	DuPont	Private	-	Landfill	Solar PV	0.50	5.0	Greenwood Energy	2013	Wholesale Electricity	-	Yes
McKees Solar Park	3	DE	Newark	Landfill	City of Newark	Municipal	-	MSW Landfill	Solar PV	0.23	3.9	Unknown	2014	Wholesale Electricity	-	Yes
Bee Ridge Landfill / Rothenbach Park	4	FL	Sarasota	Landfill	Sarasota County	Municipal	450	MSW Landfill	Solar PV	0.25	0.6	Florida Power & Light	2008	Wholesale Electricity	-	Yes
Lake Worth Landfill	4	FL	Lake Worth	Landfill	City of Lake Worth	Municipal	63	Landfill	Solar PV	2.00	5.0	Siemens	2017	Wholesale Electricity	-	Yes
Hickory Ridge Landfill	4	GA	Atlanta	Landfill	Republic Services, Inc	Private	48	MSW Landfill	Solar PV	1.00	10.0	Republic Services	2011	Wholesale Electricity	-	Yes

RE-Powering America's Land Initiative: Project Tracking Matrix

October 2017

Through the RE-Powering America's Land initiative, the EPA encourages renewable energy development on potentially contaminated land when aligned with the community's vision for the site. This list tracks completed projects where renewable energy systems have been installed on potentially contaminated lands, landfills, or mine sites. Project capacity data reflect total system capacity, which may be installed in whole or in part on potentially contaminated lands, landfills, or mine sites. For systems with an installed capacity less than 10 kW, the capacity is shown as 0.00. Where information was not found for a given site, it is noted as "Unknown" or with a "-" for numerical values. This information is sorted by "State" and then by "Project Name." Installations newly added for October 2017 are highlighted in orange. Projects highlighted in blue represent multiple installations on a single site (location).

This resource is for informational purposes only. The information in this list was gathered from public announcements of renewable energy projects in the form of company press releases, news releases, and, in some cases, conversations with the parties involved. It may not be a comprehensive list of all projects completed on contaminated land. Projects on this list include ground-mounted utility-scale systems, rooftop systems, and systems used for onsite power, including to power cleanup activities. To provide information on additional projects, please email cleanenergy@epa.gov.

1. Site Description									2. Renewable Energy Information				3. Project Implementation			
Site/Project Name	EPA Region	State	City	Type of Site	Site Owner	Site Ownership Type	Property Acreage	Former Use Description	RE Type	Project Capacity (MW)	Project Acreage	Primary RE Developer Name	Completion Date	Project Type	Current/Former Federal Asset	Landfill Application (Cross Program)
Kapolei Sustainable Energy Park	9	HI	Kapolei	RCRA	James Campbell Company LLC	Private	12	Former Industrial Waste Site	Solar PV	1.20	4.0	Forest City Hawaii	2011	Wholesale Electricity	-	-
Schaus-Vorhies Solar	7	IA	Fairfield	Brownfield	Schaus-Vorhies Manufacturing	Private	11	Foundry	Solar PV	0.50	-	Ideal Energy	2016	Wholesale Electricity	-	-
Exelon City Solar	5	IL	Chicago	Brownfield	City of Chicago	Municipal	21	Foundry and casting operation/fastener, hydraulic system components, and ball bearing manufacturer	Solar PV	10.00	41.0	Exelon and SunPower Corporation	2010	Wholesale Electricity	-	-
Gobnob Wind Turbine Project	5	IL	Farmersville	Brownfield	Illinois DNR	State	14	Freeman United Crown 1 Mine	Wind	0.90	-	Rural Electric Convenience Cooperative of Central IL	2009	Wholesale Electricity	-	-
Kokomo Solar Park	5	IN	Kokomo	Superfund	Continental Steel	Private	183	Steel operations (nails, wire, and wire fence)	Solar PV	7.00	26.0	Inovateus Solar LLC	2016	Wholesale Electricity	-	-
Reilly Tar & Chemical (Indianapolis)	5	IN	Indianapolis	Superfund	Vertellus Specialties Inc.	Private	120	Chemical manufacturing facility	Solar PV	10.80	45.0	Hanhwa Q Cells	2014	Wholesale Electricity	-	-
Fort Campbell Solar Phase One	4	KY	Fort Campbell	Landfill	U.S. Army	Federal	105,000	Landfill	Solar PV	1.90	5.0	BITHENERGY	2015	Onsite Use - General	-	Yes
Fort Campbell Solar Phase Two	4	KY	Fort Campbell	Landfill	U.S. Army	Federal	105,000	Landfill	Solar PV	3.10	30.0	BITHENERGY	2017	Wholesale Electricity	-	Yes
Acton Landfill	1	MA	Acton	Landfill	Town of Acton	Municipal	35	MSW and Light Industrial Waste Landfill	Solar PV	1.60	17.5	Ameresco	2013	Wholesale Electricity	-	Yes
Adams Landfill	1	MA	Adams	Landfill	Town of Adams	Municipal	20	MSW Landfill	Solar PV	1.10	5.0	Apis Energy Group	2013	Wholesale Electricity	-	Yes
Aquinnah Landfill	1	MA	Aquinnah	Landfill	Town of Aquinnah	Municipal	6	MSW Landfill	Solar PV	0.05	1.3	Vineyard Power Solar, LLC	2012	Onsite Use - General	-	Yes
Barnstable Landfill	1	MA	Barnstable	Landfill	Town of Barnstable	Municipal	86	Landfill	Solar PV	4.20	17.0	American Capital Energy	2014	Wholesale Electricity	-	Yes
Beech St. Landfill	1	MA	Rockland	Landfill	Town of Rockland	Municipal	98	MSW Landfill	Solar PV	3.20	7.5	NextSun Energy	2014	Wholesale Electricity	-	Yes
Bellingham Landfill Solar	1	MA	Bellingham	Landfill	Town of Bellingham	Municipal	-	MSW Landfill	Solar PV	2.70	-	Kearsarge Bellingham	2017	Wholesale Electricity	-	Yes



RE-Powering America's Land Initiative: Project Tracking Matrix

October 2017

Through the RE-Powering America's Land initiative, the EPA encourages renewable energy development on potentially contaminated land when aligned with the community's vision for the site. This list tracks completed projects where renewable energy systems have been installed on potentially contaminated lands, landfills, or mine sites. Project capacity data reflect total system capacity, which may be installed in whole or in part on potentially contaminated lands, landfills, or mine sites. For systems with an installed capacity less than 10 kW, the capacity is shown as 0.00. Where information was not found for a given site, it is noted as "Unknown" or with a "--" for numerical values. This information is sorted by "State" and then by "Project Name." Installations newly added for October 2017 are highlighted in orange. Projects highlighted in blue represent multiple installations on a single site (location).

This resource is for informational purposes only. The information in this list was gathered from public announcements of renewable energy projects in the form of company press releases, news releases, and, in some cases, conversations with the parties involved. It may not be a comprehensive list of all projects completed on contaminated land. Projects on this list include ground-mounted utility-scale systems, rooftop systems, and systems used for onsite power, including to power cleanup activities. To provide information on additional projects, please email cleanenergy@epa.gov.

1. Site Description									2. Renewable Energy Information				3. Project Implementation			
Site/Project Name	EPA Region	State	City	Type of Site	Site Owner	Site Ownership Type	Property Acreage	Former Use Description	RE Type	Project Capacity (MW)	Project Acreage	Primary RE Developer Name	Completion Date	Project Type	Current/Former Federal Asset	Landfill Application (Cross Program)
Bent Mill Solar	1	MA	Gardner	State Brownfields	City of Gardner	Municipal	27	Manufacturing (furniture)	Solar PV	1.00	5.0	BCC Solar Energy Advantage/Borrego	2014	Wholesale Electricity	-	-
Berkley Landfill Solar	1	MA	Berkley	Landfill	Waste Management	Private	23	Residential, commercial, and industrial landfill	Solar PV	3.60	18.0	Southern Sky Renewable Energy	2017	Wholesale Electricity	-	Yes
Bird Machine Landfill	1	MA	Walpole	Landfill	Baker Hughes (a GE company)	Private	134	Industrial Landfill	Solar PV	4.75	25.0	Soltage	2017	Wholesale Electricity	-	Yes
Bolton Orchards	1	MA	Bolton	Brownfield	Davis Farms Trust	Private	105	Gravel pit	Solar PV	6.00	50.0	Syncarpha Solar	2013	Wholesale Electricity	-	-
Boxford Landfill	1	MA	Boxford	Landfill	Town of Boxford	Municipal	7	MSW Landfill	Solar PV	1.00	3.5	Borrego Solar	2017	Wholesale Electricity	-	Yes
Braintree Landfill	1	MA	Braintree	Landfill	Braintree Electric Light Department	Municipal	-	MSW Landfill	Solar PV	1.26	-	Ameresco/Ivory Street Solar, LLC	2014	Wholesale Electricity	-	Yes
Brewster Landfill	1	MA	Brewster	Landfill	Town of Brewster	Municipal	16	MSW Landfill and Recycling Center	Solar PV	1.23	16.0	American Capital Energy	2014	Wholesale Electricity	-	Yes
Bridge Street Landfill	1	MA	Fairhaven	Landfill	Town of Fairhaven	Municipal	-	MSW Landfill	Solar PV	0.58	3.0	Dynamic Power/Blue Sky/Heliosage	2013	Onsite Use - General	-	Yes
Brockton Brightfield	1	MA	Brockton	Brownfield	City of Brockton and Bay State Gas Company	Municipal	27	Former Gas Works Site	Solar PV	0.46	3.7	Global Solar	2006	Wholesale Electricity	-	-
Cedar Street Landfill	1	MA	Cohasset	Landfill	Town of Cohasset	Municipal	44	MSW Landfill	Solar PV	0.42	1.7	Palmer Capital/CohSolar LLC	2017	Wholesale Electricity	-	Yes
Charles George Landfill	1	MA	Tyngsboro/Dunstable	Superfund	Charles George Family	Private	71	MSW and Industrial Landfill	Solar PV	3.56	18.0	Tyngsborough Landfill Solar, LLC	2017	Wholesale Electricity	-	Yes
Chatham Landfill	1	MA	Chatham	Landfill	Town of Chatham	Municipal	30	MSW Landfill	Solar PV	1.80	16.5	American Capital Energy	2014	Wholesale Electricity	-	Yes
Chicopee Elks Landfill	1	MA	Chicopee	Landfill	Chicopee Lodge of Elks #1849	Private	-	Landfill (no food waste)	Solar PV	2.10	9.6	Citizens Enterprises Corp	2015	Wholesale Electricity	-	Yes
Chilmark Landfill	1	MA	Chilmark	Landfill	Town of Chilmark	Municipal	11	MSW landfill	Solar PV	0.10	6.0	Vineyard Power	2014	Wholesale Electricity	-	Yes
Concord Landfill Phase I	1	MA	Concord	Landfill	Town of Concord	Municipal	-	MSW Landfill	Solar PV	1.70	-	Kearsarge Energy	2014	Wholesale Electricity	-	Yes



RE-Powering America's Land Initiative: Project Tracking Matrix

October 2017

Through the RE-Powering America's Land initiative, the EPA encourages renewable energy development on potentially contaminated land when aligned with the community's vision for the site. This list tracks completed projects where renewable energy systems have been installed on potentially contaminated lands, landfills, or mine sites. Project capacity data reflect total system capacity, which may be installed in whole or in part on potentially contaminated lands, landfills, or mine sites. For systems with an installed capacity less than 10 kW, the capacity is shown as 0.00. Where information was not found for a given site, it is noted as "Unknown" or with a "-" for numerical values. This information is sorted by "State" and then by "Project Name." Installations newly added for October 2017 are highlighted in orange. Projects highlighted in blue represent multiple installations on a single site (location).

This resource is for informational purposes only. The information in this list was gathered from public announcements of renewable energy projects in the form of company press releases, news releases, and, in some cases, conversations with the parties involved. It may not be a comprehensive list of all projects completed on contaminated land. Projects on this list include ground-mounted utility-scale systems, rooftop systems, and systems used for onsite power, including to power cleanup activities. To provide information on additional projects, please email cleanenergy@epa.gov.

1. Site Description									2. Renewable Energy Information				3. Project Implementation			
Site/Project Name	EPA Region	State	City	Type of Site	Site Owner	Site Ownership Type	Property Acreage	Former Use Description	RE Type	Project Capacity (MW)	Project Acreage	Primary RE Developer Name	Completion Date	Project Type	Current/Former Federal Asset	Landfill Application (Cross Program)
Cottage Street Landfill	1	MA	Springfield	Landfill	Cottage Developers, LLP.	Municipal	62	MSW Landfill	Solar PV	3.90	40.0	Western MA Electric Co. (WMECO)	2014	Wholesale Electricity	-	Yes
Cowles Gravel Solar	1	MA	Westfield	Brownfield	Private trust	Private	35	Gravel Pit	Solar PV	2.60	10.0	Westfield Solar, Inc. (subsidiary of ConEdison Development)	2016	Wholesale Electricity	-	-
Delta Hills Landfill	1	MA	Chicopee	Landfill	WestMass Area Development Corp.	Private	-	MSW Landfill	Solar PV	2.69	8.0	CR Solar	2015	Wholesale Electricity	-	Yes
Dorchester Solar Power Project	1	MA	Dorchester	Brownfield	National Grid	Private	-	Former Manufactured Gas Plant	Solar PV	1.30	6.0	Unknown	2012	Wholesale Electricity	-	-
Dover Landfill Solar	1	MA	Dover	Landfill	Hale Reservation	Private	1,137	MSW Landfill	Solar PV	1.40	10.0	Blue Wave	2017	Wholesale Electricity	-	Yes
Duxbury Landfill	1	MA	Duxbury	Landfill	Town of Duxbury	Municipal	19	MSW Landfill	Solar PV	0.59	3.0	American Capital Energy (as Duxbury Solar LLC) and Renewable Energy Development Partners, LLC	2014	Wholesale Electricity	-	Yes
East Bridgewater Landfill Solar	1	MA	East Bridgewater	Landfill	Republic Services	Private	233	MSW Landfill	Solar PV	3.20	-	Soltage	2017	Wholesale Electricity	-	Yes
Eastham Landfill	1	MA	Eastham	Landfill	Town of Eastham	Municipal	38	MSW Landfill	Solar PV	0.59	10.4	American Capital Energy	2014	Wholesale Electricity	-	Yes
Everett Solar Power Project	1	MA	Everett	Brownfield	National Grid	Private	-	Former Manufactured Gas Plant	Solar PV	0.61	2.5	Unknown	2010	Wholesale Electricity	-	-
Fairhaven Sanitary Landfill (Canton)	1	MA	Canton	Landfill	Town of Canton	Municipal	15	MSW Landfill	Solar PV	5.60	12.5	Southern Sky Renewable Energy / GZA	2012	Wholesale Electricity	-	Yes
Falmouth Landfill	1	MA	Falmouth	Landfill	Town of Falmouth	Municipal	48	MSW Landfill	Solar PV	4.00	16.0	Citizens Energy	2017	Wholesale Electricity	-	Yes
Former Grasso Landfill	1	MA	Agawam	Landfill	Town of Agawam	Municipal	10	MSW Landfill	Solar PV	1.98	9.5	Rivermoor-Citizens Agawam, LLC	2013	Wholesale Electricity	-	Yes
Genrad Solar	1	MA	Stow	RCRA	Teradyne Corp.	Private	85	Manufacturing/ Electroplating	Solar PV	2.50	12.0	REM LLC/Syncarpha Capitol/Gehrlicher	2013	Wholesale Electricity	-	-

RE-Powering America's Land Initiative: Project Tracking Matrix

October 2017

Through the RE-Powering America's Land initiative, the EPA encourages renewable energy development on potentially contaminated land when aligned with the community's vision for the site. This list tracks completed projects where renewable energy systems have been installed on potentially contaminated lands, landfills, or mine sites. Project capacity data reflect total system capacity, which may be installed in whole or in part on potentially contaminated lands, landfills, or mine sites. For systems with an installed capacity less than 10 kW, the capacity is shown as 0.00. Where information was not found for a given site, it is noted as "Unknown" or with a "-" for numerical values. This information is sorted by "State" and then by "Project Name." Installations newly added for October 2017 are highlighted in orange. Projects highlighted in blue represent multiple installations on a single site (location).

This resource is for informational purposes only. The information in this list was gathered from public announcements of renewable energy projects in the form of company press releases, news releases, and, in some cases, conversations with the parties involved. It may not be a comprehensive list of all projects completed on contaminated land. Projects on this list include ground-mounted utility-scale systems, rooftop systems, and systems used for onsite power, including to power cleanup activities. To provide information on additional projects, please email cleanenergy@epa.gov.

1. Site Description									2. Renewable Energy Information				3. Project Implementation			
Site/Project Name	EPA Region	State	City	Type of Site	Site Owner	Site Ownership Type	Property Acreage	Former Use Description	RE Type	Project Capacity (MW)	Project Acreage	Primary RE Developer Name	Completion Date	Project Type	Current/Former Federal Asset	Landfill Application (Cross Program)
Greenfield Solar Farm	1	MA	Greenfield	Landfill	Town of Greenfield	Municipal	23	MSW Landfill	Solar PV	2.00	23.0	Axio Power	2012	Wholesale Electricity	-	Yes
Greenwood St. Landfill	1	MA	Worcester	Landfill	City of Worcester	Municipal	52	MSW Landfill	Solar PV	8.10	25.0	Borrego Solar	2017	Wholesale Electricity	-	Yes
Groton Landfill	1	MA	Groton	Landfill	Town of Groton	Municipal	-	MSW Landfill	Solar PV	2.93	8.0	Groton Landfill Solar, LLC	2016	Wholesale Electricity	-	Yes
Groveland Wells Solar	1	MA	Groveland	Superfund	Groveland Municipal Light	Municipal	35	Manufacturing (metal and plastics)	Solar PV	3.60	19.0	Consolidated Edison Development, Inc.	2013	Wholesale Electricity	-	-
Harwich Municipal Landfill	1	MA	Harwich	Landfill	Town of Harwich	Municipal	120	MSW Landfill	Solar PV	4.50	28.0	American Capital Energy	2014	Wholesale Electricity	-	Yes
Haverhill Solar Power Project	1	MA	Haverhill	Brownfield	National Grid	Private	-	Former Manufactured Gas Plant	Solar PV	1.00	5.0	Rivermoor Energy	2010	Wholesale Electricity	-	-
Hill Street Landfill	1	MA	Norton	Landfill	City of Norton	Municipal	38	Landfill	Solar PV	2.00	8.5	Norton Landfill Solar LLC	2016	Wholesale Electricity	-	Yes
Hudson/Stow Landfill Solar	1	MA	Hudson	Landfill	Waste Management	Private	-	MSW Landfill	Solar PV	5.00	28.0	Unknown	2017	Wholesale Electricity	-	Yes
Hull Wind II	1	MA	Hull	Landfill	Town of Hull	Municipal	13	MSW Landfill	Wind	1.80	10.0	Hull Municipal Light	2006	Wholesale Electricity	-	Yes
Hunt Road Landfill	1	MA	Amesbury	Landfill	Waste Management	Private	65	MSW Landfill	Solar PV	6.00	30.0	Citizens Energy	2016	Wholesale Electricity	-	Yes
Huntington Avenue Landfill	1	MA	Methuen	Landfill	Town of Methuen	Municipal	30	MSW Landfill	Solar PV	1.30	4.7	Borrego Solar	2013	Wholesale Electricity	-	Yes
Indian Orchard Solar Facility	1	MA	Springfield	Brownfield	Springfield Redevelopment Authority	Municipal	-	Former foundry	Solar PV	2.30	12.0	Western Massachusetts Electric Company	2011	Wholesale Electricity	-	-
Iron Horse Park Asbestos Landfill Solar	1	MA	Billerica	Superfund	B&M/PanAm	Private	174	Asbestos Landfill	Solar PV	6.00	30.0	Conti Solar	2017	Wholesale Electricity	-	Yes
Iron Horse Park/Dow Solar	1	MA	Billerica	Superfund	Dow Chemical Corp.	Private	174	Chemical manufacturing facility	Solar PV	3.68	20.0	Soltage	2016	Wholesale Electricity	-	-
Iron Horse Park / Shaffer Landfill	1	MA	Billerica	Superfund	Town of Billerica	Municipal	40	MSW Landfill	Solar PV	6.00	40.0	Urban Green Technologies	2014	Wholesale Electricity	-	Yes

RE-Powering America's Land Initiative: Project Tracking Matrix

October 2017

Through the RE-Powering America's Land initiative, the EPA encourages renewable energy development on potentially contaminated land when aligned with the community's vision for the site. This list tracks completed projects where renewable energy systems have been installed on potentially contaminated lands, landfills, or mine sites. Project capacity data reflect total system capacity, which may be installed in whole or in part on potentially contaminated lands, landfills, or mine sites. For systems with an installed capacity less than 10 kW, the capacity is shown as 0.00. Where information was not found for a given site, it is noted as "Unknown" or with a "-" for numerical values. This information is sorted by "State" and then by "Project Name." Installations newly added for October 2017 are highlighted in orange. Projects highlighted in blue represent multiple installations on a single site (location).

This resource is for informational purposes only. The information in this list was gathered from public announcements of renewable energy projects in the form of company press releases, news releases, and, in some cases, conversations with the parties involved. It may not be a comprehensive list of all projects completed on contaminated land. Projects on this list include ground-mounted utility-scale systems, rooftop systems, and systems used for onsite power, including to power cleanup activities. To provide information on additional projects, please email cleanenergy@epa.gov.

1. Site Description									2. Renewable Energy Information				3. Project Implementation			
Site/Project Name	EPA Region	State	City	Type of Site	Site Owner	Site Ownership Type	Property Acreage	Former Use Description	RE Type	Project Capacity (MW)	Project Acreage	Primary RE Developer Name	Completion Date	Project Type	Current/Former Federal Asset	Landfill Application (Cross Program)
Kingston Landfill (wind)	1	MA	Kingston	Landfill	Town of Kingston	Municipal	20	MSW Landfill	Wind	2.00	20.0	Kingston Wind Independence LLC	2012	Wholesale Electricity	-	Yes
Lancaster Landfill	1	MA	Lancaster	Landfill	Town of Lancaster	Municipal	7	Gravel Pit Adjacent to Landfill	Solar PV	0.50	2.8	Unknown	2013	Wholesale Electricity	-	Yes
Lee Landfill (Willow Hill Road)	1	MA	Lee	Landfill	Schweitzer-Mauduit International	Private	-	Paper sludge landfill	Solar PV	2.60	17.5	East Light Solar	2017	Wholesale Electricity	-	Yes
Ludlow Landfill	1	MA	Ludlow	Landfill	Town of Ludlow	Municipal	22	MSW Landfill	Solar PV	2.70	17.0	Borrego Solar	2013	Wholesale Electricity	-	Yes
Mashpee Landfill Solar	1	MA	Mashpee	Landfill	Town of Mashpee	Municipal	-	MSW Landfill	Solar PV	2.10	8.0	American Capital Energy/ Renewable Energy Development Partners, LLC	2014	Wholesale Electricity	-	Yes
Massachusetts Military Reservation (Otis)	1	MA	Sagamore	Superfund	U.S. Air Force	Federal	22,000	Military training and aircraft operation and maintenance	Wind	4.50	-	Unknown	2011	Onsite Use - Green Remediation	Yes	-
Mount Tom Station	1	MA	Holyoke	Brownfield	ENGIE North America	Private	128	Coal plant	Solar PV	5.76	22.0	ENGIE North America	2017	Wholesale Electricity	-	-
MT Sullivan Landfill Solar	1	MA	Chicopee	Landfill	Waste Management	Private	-	MSW Landfill	Solar PV	2.50	6.0	Unknown	2017	Wholesale Electricity	-	Yes
Needham Landfill	1	MA	Needham	Landfill	City of Needham	Municipal	75	MSW Landfill	Solar PV	3.70	13.0	Brightfields	2016	Wholesale Electricity	-	Yes
New Bedford High School Solar	1	MA	New Bedford	Brownfield	City of New Bedford	Private	-		Solar PV	0.50	2.5	Beaumont Solar	2012	Wholesale Electricity	-	-
Norfolk Landfill Phase I	1	MA	Norfolk	Landfill	Town of Norfolk	Municipal	51	MSW Landfill and Adjacent Land	Solar PV	0.55	1.6	Constellation Solar Massachusetts, LLC	2012	Wholesale Electricity	-	Yes
Norfolk Landfill Phase II	1	MA	Norfolk	Landfill	Town of Norfolk	Municipal	51	MSW Landfill and Adjacent Land	Solar PV	1.05	3.5	Constellation Solar Massachusetts, LLC	2012	Wholesale Electricity	-	Yes
North Adams Landfill	1	MA	North Adams	Landfill	Town of North Adams	Municipal	-	MSW Landfill	Solar PV	3.50	15.0	Borrego Solar	2015	Wholesale Electricity	-	Yes
Oliver Street Landfill	1	MA	Easthampton	Landfill	City of Easthampton	Municipal	40	MSW Landfill	Solar PV	2.30	12.0	Borrego Solar	2012	Wholesale Electricity	-	Yes

RE-Powering America's Land Initiative: Project Tracking Matrix

October 2017

Through the RE-Powering America's Land initiative, the EPA encourages renewable energy development on potentially contaminated land when aligned with the community's vision for the site. This list tracks completed projects where renewable energy systems have been installed on potentially contaminated lands, landfills, or mine sites. Project capacity data reflect total system capacity, which may be installed in whole or in part on potentially contaminated lands, landfills, or mine sites. For systems with an installed capacity less than 10 kW, the capacity is shown as 0.00. Where information was not found for a given site, it is noted as "Unknown" or with a "-" for numerical values. This information is sorted by "State" and then by "Project Name." Installations newly added for October 2017 are highlighted in orange. Projects highlighted in blue represent multiple installations on a single site (location).

This resource is for informational purposes only. The information in this list was gathered from public announcements of renewable energy projects in the form of company press releases, news releases, and, in some cases, conversations with the parties involved. It may not be a comprehensive list of all projects completed on contaminated land. Projects on this list include ground-mounted utility-scale systems, rooftop systems, and systems used for onsite power, including to power cleanup activities. To provide information on additional projects, please email cleanenergy@epa.gov.

1. Site Description									2. Renewable Energy Information				3. Project Implementation			
Site/Project Name	EPA Region	State	City	Type of Site	Site Owner	Site Ownership Type	Property Acreage	Former Use Description	RE Type	Project Capacity (MW)	Project Acreage	Primary RE Developer Name	Completion Date	Project Type	Current/Former Federal Asset	Landfill Application (Cross Program)
Orleans Landfill	1	MA	Orleans	Landfill	Town of Orleans	Municipal	21	MSW Landfill	Solar PV	0.57	1.7	"Broadway Renewable Strategies, LLC"	2015	Wholesale Electricity	-	Yes
Osgood Landing Solar	1	MA	North Andover	State Brownfields	Ozzy Properties	Private	-	Manufacturing	Solar PV	6.00	-	Osgood Solar	2016	Wholesale Electricity	-	-
Palmer Metropolitan Airfield Solar	1	MA	Palmer	Brownfield	JenJill LLC	Private	105	Airfield	Solar PV	6.00	30.0	Borrego Solar	2016	Wholesale Electricity	-	-
Phillips Lightoller Wind	1	MA	Fall River	Brownfield	Phillips	Private	32	Manufacturing/Industrial Park	Wind	2.00	-	Phillips	2012	Wholesale Electricity	-	-
Pittsfield Municipal Landfill	1	MA	Pittsfield	Landfill	City of Pittsfield	Municipal	44	MSW Landfill	Solar PV	2.91	9.0	Ameresco	2017	Wholesale Electricity	-	Yes
Plainville Landfill	1	MA	Plainville	Landfill	Republic Services (Allied Waste)	Private	138	MSW Landfill	Solar PV	6.00	-	Soltage LLC	2017	Wholesale Electricity	-	Yes
Prospect Street Landfill	1	MA	Easton	Landfill	Town of Easton	Municipal	8	MSW Landfill	Solar PV	1.90	8.0	Borrego Solar	2014	Wholesale Electricity	-	Yes
Quaboag Landfill Solar	1	MA	Brookfield	Landfill	Town of Brookfield	Municipal	16	MSW Landfill	Solar PV	0.43	3.0	Washington Gas Energy Systems, Inc.	2013	Wholesale Electricity	-	Yes
Raffaele Road Solar Project	1	MA	Plymouth	Brownfield	Plymouth Sand and Gravel LLC	Private	30	Sand and gravel pit	Solar PV	5.67	26.0	BlueWave Capital	2014	Wholesale Electricity	-	-
Randolph Landfill Solar	1	MA	Randolph	Landfill	Republic Services	Private	295	MSW Landfill	Solar PV	4.80	30.0	Soltage	2017	Wholesale Electricity	-	Yes
Ravenbrook Farms Landfill	1	MA	North Carver	Landfill	Ravenbrook Farms, Inc. (Willard Rhodes)	Private	31	MSW, CD&D Landfill	Solar PV	6.00	14.0	Southern Sky Renewable Energy	2014	Wholesale Electricity	-	Yes
Rehoboth Landfill (MA)	1	MA	Rehoboth	Landfill	Town of Rehoboth	Municipal	21	MSW Landfill	Solar PV	2.49	18.3	NRG Renew LLC	2015	Wholesale Electricity	-	Yes
Re-Solve Superfund Solar	1	MA	Dartmouth	Superfund	Unknown	Unknown	6	Waste Chemical Reclamation	Solar PV	0.15	-	Unknown	2012	Onsite Use - Green Remediation	-	-
Revere Solar Power Project	1	MA	Revere	Brownfield	National Grid	Private	-	Former Manufactured Gas Plant	Solar PV	0.75	3.0	Unknown	2010	Wholesale Electricity	-	-

RE-Powering America's Land Initiative: Project Tracking Matrix

October 2017

Through the RE-Powering America's Land initiative, the EPA encourages renewable energy development on potentially contaminated land when aligned with the community's vision for the site. This list tracks completed projects where renewable energy systems have been installed on potentially contaminated lands, landfills, or mine sites. Project capacity data reflect total system capacity, which may be installed in whole or in part on potentially contaminated lands, landfills, or mine sites. For systems with an installed capacity less than 10 kW, the capacity is shown as 0.00. Where information was not found for a given site, it is noted as "Unknown" or with a "-" for numerical values. This information is sorted by "State" and then by "Project Name." Installations newly added for October 2017 are highlighted in orange. Projects highlighted in blue represent multiple installations on a single site (location).

This resource is for informational purposes only. The information in this list was gathered from public announcements of renewable energy projects in the form of company press releases, news releases, and, in some cases, conversations with the parties involved. It may not be a comprehensive list of all projects completed on contaminated land. Projects on this list include ground-mounted utility-scale systems, rooftop systems, and systems used for onsite power, including to power cleanup activities. To provide information on additional projects, please email cleanenergy@epa.gov.

1. Site Description									2. Renewable Energy Information				3. Project Implementation			
Site/Project Name	EPA Region	State	City	Type of Site	Site Owner	Site Ownership Type	Property Acreage	Former Use Description	RE Type	Project Capacity (MW)	Project Acreage	Primary RE Developer Name	Completion Date	Project Type	Current/Former Federal Asset	Landfill Application (Cross Program)
Rising Paper Solar	1	MA	Great Barrington	Landfill	Rising Paper, LLC	Private	67	Paper Landfill	Solar PV	3.20	12.0	Altus Power America Management, LLC	2016	Wholesale Electricity	-	Yes
Rumford Ave. Landfill Solar	1	MA	Newtown	Landfill	City of Newtown	Municipal	-	MSW and DPW materials landfill	Solar PV	2.14	9.0	Ameresco / Rumford Ave. Solar, LLC	2017	Wholesale Electricity	-	Yes
Russells Mills Road Landfill	1	MA	Dartmouth	Landfill	Town of Dartmouth	Municipal	115	MSW Landfill	Solar PV	1.45	6.3	Borrego Solar	2013	Wholesale Electricity	-	Yes
Scituate Landfill	1	MA	Scituate	Landfill	Town of Scituate	Municipal	29	Landfill: MSW, construction debris, and wastewater treatment residuals	Solar PV	3.00	12.5	Scituate Solar - JV between Brightfields Development LLC and Syncarpha Capital	2013	Wholesale Electricity	-	Yes
Silver Lake Solar Photovoltaic Facility	1	MA	Pittsfield	Brownfield	Western Massachusetts Electric Company	Private	8	Former GE site and former steam generating site	Solar PV	1.80	8.0	Western Massachusetts Electric Company (WMECO)	2010	Wholesale Electricity	-	-
South Hadley Landfill	1	MA	South Hadley	Landfill	Town of South Hadley	Municipal	-	MSW Landfill	Solar PV	0.08	-	Tensor/ARM Group	2012	Onsite Use - General	-	Yes
Stow Brownfield Solar	1	MA	Stow	Brownfield	Unknown	Private	12	Unknown	Solar PV	2.50	12.0	Syncarpha Solar and Renewable Energy Massachusetts	2013	Wholesale Electricity	-	-
Sudbury Landfill	1	MA	Sudbury	Landfill	Town of Sudbury	Municipal	18	MSW Landfill	Solar PV	1.50	5.3	Ameresco/Solar Sudbury One, LLC	2013	Wholesale Electricity	-	Yes
Sullivan's Ledge	1	MA	New Bedford	Superfund	City of New Bedford	Municipal	27	Quarry / hazardous waste disposal	Solar PV	1.80	10.0	SunEdison	2014	Wholesale Electricity	-	-
Sylvester Ray Construction & Demolition Debris Landfill	1	MA	Marshfield	Landfill	Sylvester Ray, Inc.	Private	27	Demolition Landfill	Solar PV	3.87	13.0	No Fossil Fuel, LLC	2013	Wholesale Electricity	-	Yes
Theophilus Smith Road Landfill	1	MA	Dennis	Landfill	Town of Dennis	Municipal	148	MSW Landfill	Solar PV	6.00	34.0	American Capital Energy	2014	Wholesale Electricity	-	Yes

RE-Powering America's Land Initiative: Project Tracking Matrix

October 2017

Through the RE-Powering America's Land initiative, the EPA encourages renewable energy development on potentially contaminated land when aligned with the community's vision for the site. This list tracks completed projects where renewable energy systems have been installed on potentially contaminated lands, landfills, or mine sites. Project capacity data reflect total system capacity, which may be installed in whole or in part on potentially contaminated lands, landfills, or mine sites. For systems with an installed capacity less than 10 kW, the capacity is shown as 0.00. Where information was not found for a given site, it is noted as "Unknown" or with a "-" for numerical values. This information is sorted by "State" and then by "Project Name." Installations newly added for October 2017 are highlighted in orange. Projects highlighted in blue represent multiple installations on a single site (location).

This resource is for informational purposes only. The information in this list was gathered from public announcements of renewable energy projects in the form of company press releases, news releases, and, in some cases, conversations with the parties involved. It may not be a comprehensive list of all projects completed on contaminated land. Projects on this list include ground-mounted utility-scale systems, rooftop systems, and systems used for onsite power, including to power cleanup activities. To provide information on additional projects, please email cleanenergy@epa.gov.

1. Site Description									2. Renewable Energy Information				3. Project Implementation			
Site/Project Name	EPA Region	State	City	Type of Site	Site Owner	Site Ownership Type	Property Acreage	Former Use Description	RE Type	Project Capacity (MW)	Project Acreage	Primary RE Developer Name	Completion Date	Project Type	Current/Former Federal Asset	Landfill Application (Cross Program)
Tisbury Landfill	1	MA	Tisbury	Landfill	Town of Tisbury	Municipal	22	MSW Landfill	Solar PV	1.20	4.0	American Capital Energy	2014	Wholesale Electricity	-	Yes
W.R. Grace Solar	1	MA	Acton/Concord	Superfund	Town of Concord	Municipal	240	Manufacturing (sealants, concrete)	Solar PV	5.60	30.0	Kearsarge	2016	Wholesale Electricity	-	-
Waltham Street Landfill	1	MA	Maynard	Landfill	Town of Maynard	Municipal	14	MSW Landfill	Solar PV	1.20	5.0	EPG Solar	2013	Wholesale Electricity	-	Yes
West Boylston Landfill	1	MA	West Boylston	Landfill	West Boylston Municipal Lighting Plant	Municipal	-	MSW Landfill	Solar PV	1.50	5.0	Greenskies Renewable Energy	2017	Wholesale Electricity	-	Yes
West Tisbury Landfill	1	MA	West Tisbury	Landfill	Town of West Tisbury	Municipal	9	MSW Landfill	Solar PV	0.88	6.0	Broadway Renewable Strategies, LLC	2015	Wholesale Electricity	-	Yes
Westfield Landfill	1	MA	Westfield	Landfill	City of Westfield	Municipal	10	MSW landfill	Solar PV	2.50	7.5	Citizens Energy	2015	Wholesale Electricity	-	Yes
Westford St. Landfill	1	MA	Lowell	Landfill	City of Lowell	Municipal	42	Landfill - MSW, ash, oxide box waste	Solar PV	1.50	6.0	Ameresco	2014	Wholesale Electricity	-	Yes
Weston Landfill	1	MA	Weston	Landfill	Town of Weston	Municipal	-	MSW Landfill	Solar PV	2.27	9.0	Ameresco (d/b/a/ Church Street Solar)	2016	Wholesale Electricity	-	Yes
Wilbraham Landfill	1	MA	Wilbraham	Landfill	Town of Wilbraham	Municipal	-	MSW Landfill	Solar PV	0.75	3.0	Renewable Energy Development Partners	2016	Wholesale Electricity	-	Yes
Woburn Landfill	1	MA	Woburn	Landfill	City of North Woburn	Municipal	50	MSW Landfill	Solar PV	3.40	-	Greenwood Energy	2017	Wholesale Electricity	-	Yes
Former Ellicott City Landfill	3	MD	Ellicott City	Landfill	Howard County	Municipal	83	MSW Landfill	Solar PV	1.20	2.0	SunEdison	2011	Onsite Use - General	-	Yes
Fort Detrick	3	MD	Frederick	Superfund	U.S. Army	Federal	1,200	Army Medical Command installation	Solar PV	18.60	67.0	Ameresco Inc.	2016	Onsite Use - General	Yes	-
Forty West Landfill	3	MD	Hagerstown	Landfill	Washington County	Municipal	-	MSW Landfill	Solar PV	2.00	10.0	EPG Solar	2015	Wholesale Electricity	-	Yes
Washington County Rubble Landfill	3	MD	Williamsport	Landfill	Washington County	Municipal	-	Building materials and construction debris landfill	Solar PV	2.50	-	EPG Solar	2015	Wholesale Electricity	-	Yes

RE-Powering America's Land Initiative: Project Tracking Matrix

October 2017

Through the RE-Powering America's Land initiative, the EPA encourages renewable energy development on potentially contaminated land when aligned with the community's vision for the site. This list tracks completed projects where renewable energy systems have been installed on potentially contaminated lands, landfills, or mine sites. Project capacity data reflect total system capacity, which may be installed in whole or in part on potentially contaminated lands, landfills, or mine sites. For systems with an installed capacity less than 10 kW, the capacity is shown as 0.00. Where information was not found for a given site, it is noted as "Unknown" or with a "-" for numerical values. This information is sorted by "State" and then by "Project Name." Installations newly added for October 2017 are highlighted in orange. Projects highlighted in blue represent multiple installations on a single site (location).

This resource is for informational purposes only. The information in this list was gathered from public announcements of renewable energy projects in the form of company press releases, news releases, and, in some cases, conversations with the parties involved. It may not be a comprehensive list of all projects completed on contaminated land. Projects on this list include ground-mounted utility-scale systems, rooftop systems, and systems used for onsite power, including to power cleanup activities. To provide information on additional projects, please email cleanenergy@epa.gov.

1. Site Description									2. Renewable Energy Information				3. Project Implementation			
Site/Project Name	EPA Region	State	City	Type of Site	Site Owner	Site Ownership Type	Property Acreage	Former Use Description	RE Type	Project Capacity (MW)	Project Acreage	Primary RE Developer Name	Completion Date	Project Type	Current/Former Federal Asset	Landfill Application (Cross Program)
Belfast Landfill	1	ME	Belfast	Landfill	City of Belfast	Municipal	-	MSW Landfill	Solar PV	0.12	-	ReVision Energy	2015	Wholesale Electricity	-	Yes
Eaton Rapids Landfill	5	MI	Hamlin Township	Landfill	Town of Eaton Rapids	Municipal	30	MSW Landfill	Solar PV	0.54	-	Helios Solar LLC	2014	Wholesale Electricity	-	Yes
Fridley Plant Solar	5	MN	N/A	Superfund	FMC Corp. (PRP)	Private	18	Industrial Landfill	Solar PV	0.15	-	Unknown	2009	Onsite Use - Green Remediation	-	Yes
Hutchinson Landfill	5	MN	Hutchinson	Landfill	City of Hutchinson	Municipal	-	MSW Landfill	Solar PV	0.40	1.0	Ameresco	2015	Onsite Use - General	-	Yes
Lindenfelser Landfill	5	MN	St. Michael	Landfill	Minnesota Pollution Control Agency	Municipal	-	MSW Landfill	Solar PV	-	-	Unknown	2016	Onsite Use - General	-	Yes
Washington County Landfill (MN)	5	MN	Lake Elmo	Superfund	Minnesota Pollution Control Agency	Municipal	25	Residential, commercial, industrial, demolition landfill	Solar PV	-	-	Unknown	2016	Onsite Use - General	-	Yes
Busy Bee's Laundry	7	MO	Rolla	Brownfield	Unknown	Private	-	Dry Cleaner	Solar PV	0.56	-	Unknown	2011	Onsite Use - Green Remediation	-	-
Zortman-Landusky Mine	8	MT	N/A	Mine Lands	BLM and MT DEQ	Federal/Municipal	1,200	Ore mining and gold mining	Wind	0.23	-	Montana DEQ and U.S. BLM	2012	Onsite Use - Green Remediation	-	-
Evergreen Packaging Landfill	4	NC	Haywood County	Landfill	Evergreen Packaging	Private	-	Industrial Landfill	Solar PV	0.55	3.0	FLS Energy	2010	Wholesale Electricity	-	Yes
NC State University - Agricultural Pesticide Landfill	4	NC	Raleigh	Brownfield	NC State University	Private	-	Agricultural Pesticide Landfill	Solar PV	0.08	-	Carolina Solar Energy	2007	Wholesale Electricity	-	Yes
Former Nebraska Ordnance Plant	7	NE	Mead	Superfund	University of Nebraska	Private	-	Former Army Ordnance Plant	Wind	0.01	-	Unknown	2004	Onsite Use - Green Remediation	Yes	-
Milton Landfill Solar Garden	1	NH	Milton	Landfill	Town of Milton	Municipal	5	MSW Landfill	Solar PV	1.00	4.5	NH Solar Gardens	2016	Wholesale Electricity	-	Yes
Bernards Township Landfill	2	NJ	Bernards Twp	Unknown	Bernards Twp	Municipal	-	MSW Landfill	Solar PV	3.68	-	Syncarpha/The Conti Group	2016	Wholesale Electricity	-	-
Brick Township Landfill	2	NJ	Brick Township	Superfund	Brick Township	Municipal	42	MSW landfill	Solar PV	7.00	20.0	Brick Standard	2014	Wholesale Electricity	-	-



RE-Powering America's Land Initiative: Project Tracking Matrix

October 2017

Through the RE-Powering America's Land initiative, the EPA encourages renewable energy development on potentially contaminated land when aligned with the community's vision for the site. This list tracks completed projects where renewable energy systems have been installed on potentially contaminated lands, landfills, or mine sites. Project capacity data reflect total system capacity, which may be installed in whole or in part on potentially contaminated lands, landfills, or mine sites. For systems with an installed capacity less than 10 kW, the capacity is shown as 0.00. Where information was not found for a given site, it is noted as "Unknown" or with a "-" for numerical values. This information is sorted by "State" and then by "Project Name." Installations newly added for October 2017 are highlighted in orange. Projects highlighted in blue represent multiple installations on a single site (location).

This resource is for informational purposes only. The information in this list was gathered from public announcements of renewable energy projects in the form of company press releases, news releases, and, in some cases, conversations with the parties involved. It may not be a comprehensive list of all projects completed on contaminated land. Projects on this list include ground-mounted utility-scale systems, rooftop systems, and systems used for onsite power, including to power cleanup activities. To provide information on additional projects, please email cleanenergy@epa.gov.

1. Site Description									2. Renewable Energy Information				3. Project Implementation			
Site/Project Name	EPA Region	State	City	Type of Site	Site Owner	Site Ownership Type	Property Acreage	Former Use Description	RE Type	Project Capacity (MW)	Project Acreage	Primary RE Developer Name	Completion Date	Project Type	Current/Former Federal Asset	Landfill Application (Cross Program)
Clean Harbors	2	NJ	Bridgeport	Landfill	Clean Harbors Development	Private	200	Hazardous waste treatment, storage, and disposal facility	Solar PV	1.50	82.0	Clean Harbors	2011	Onsite Use - Green Remediation	-	Yes
Edgeboro Landfill	2	NJ	East Brunswick	Landfill	Middlesex County	Municipal	-	MSW Landfill	Solar PV	4.30	27.0	NERC Solar	2011	Wholesale Electricity	-	Yes
FedEx Ground Distribution Hub	2	NJ	Woodbridge	Brownfield	FedEx	Private	200	Former chemical facility	Solar PV	2.42	3.3	BP Solar	2009	Rooftop	-	-
Fort Dix Landfill Solar	2	NJ	Pemberton Township	Superfund	U.S. Department of Defense (joint base operations)	Federal	42,000	Landfill	Solar PV	16.50	98.0	Affiliates of Starwood Energy Group and Energy Management, Inc.	2017	Wholesale Electricity	Yes	Yes
Hackensack Solar Farm	2	NJ	Hackensack	Brownfield	PSE&G	Private	40	Former manufactured gas plant/storage	Solar PV	1.06	6.0	PSE&G	2012	Wholesale Electricity	-	-
Industrial Land Reclaiming Landfill	2	NJ	Edison	Landfill	Industrial Land Reclaiming Inc.	Private	-	MSW Landfill	Solar PV	7.75	21.0	PSE&G/Vanguard Energy Partners, LLC	2017	Wholesale Electricity	-	Yes
Kearny Landfill	2	NJ	Kearny	Landfill	New Jersey Meadowlands Commission	Municipal	35	MSW Landfill	Solar PV	3.00	13.0	SunDurance Energy LLC	2012	Wholesale Electricity	-	Yes
Kinsley Landfill	2	NJ	Deptford Township	Landfill	Kinsley's Landfill, Inc. (subsidiary of TransTech)	Private	140	MSW Landfill	Solar PV	11.18	35.0	PSE&G	2014	Wholesale Electricity	-	Yes
L&D Landfill	2	NJ	Eastampton, Lumberton, and Mount Holly	Superfund	Waste Management	Private	200	Industrial/MSW landfill	Solar PV	12.93	53.0	PSE&G	2016	Wholesale Electricity	-	Yes
Linden Solar Farm	2	NJ	Linden	Brownfield	Public Service Electric and Gas Company	Private	-	Synthetic natural gas facility	Solar PV	3.20	10.0	Advanced Solar Products	2011	Wholesale Electricity	-	-
Owens Corning Landfill	2	NJ	Gloucester Township	Landfill	Owens Corning	Private	-	Landfill	Solar PV	3.00	14.4	PV Navigator	2017	Wholesale Electricity	-	Yes
Parklands Solar Farm	2	NJ	Bordentown Township	Landfill	Waste Management	Private	95	MSW Landfill	Solar PV	10.14	40.0	PSE&G	2015	Wholesale Electricity	-	Yes

RE-Powering America's Land Initiative: Project Tracking Matrix

October 2017

Through the RE-Powering America's Land initiative, the EPA encourages renewable energy development on potentially contaminated land when aligned with the community's vision for the site. This list tracks completed projects where renewable energy systems have been installed on potentially contaminated lands, landfills, or mine sites. Project capacity data reflect total system capacity, which may be installed in whole or in part on potentially contaminated lands, landfills, or mine sites. For systems with an installed capacity less than 10 kW, the capacity is shown as 0.00. Where information was not found for a given site, it is noted as "Unknown" or with a "-" for numerical values. This information is sorted by "State" and then by "Project Name." Installations newly added for October 2017 are highlighted in orange. Projects highlighted in blue represent multiple installations on a single site (location).

This resource is for informational purposes only. The information in this list was gathered from public announcements of renewable energy projects in the form of company press releases, news releases, and, in some cases, conversations with the parties involved. It may not be a comprehensive list of all projects completed on contaminated land. Projects on this list include ground-mounted utility-scale systems, rooftop systems, and systems used for onsite power, including to power cleanup activities. To provide information on additional projects, please email cleanenergy@epa.gov.

1. Site Description									2. Renewable Energy Information				3. Project Implementation			
Site/Project Name	EPA Region	State	City	Type of Site	Site Owner	Site Ownership Type	Property Acreage	Former Use Description	RE Type	Project Capacity (MW)	Project Acreage	Primary RE Developer Name	Completion Date	Project Type	Current/Former Federal Asset	Landfill Application (Cross Program)
Paulsboro Terminal Landfill	2	NJ	Paulsboro	Brownfield	BP	Private	17	Former refined petroleum and specialty chemical bulk storage and distribution facility	Solar PV	0.28	5.0	BP	2002	Onsite Use - Green Remediation	-	-
Pennsauken Landfill Renewable Energy Park-Solar	2	NJ	Pennsauken	Landfill	Pollution Control Financing Authority of Camden County	Municipal	39	MSW, commercial, and non-hazardous industrial landfill	Solar PV	2.60	10.0	PPL Renewable Energy	2008	Onsite Use - General	-	Yes
Silver Lake Solar Farm	2	NJ	Edison	Brownfield	Public Service Electric and Gas Company	Private	6	Gas manufacturing	Solar PV	2.02	5.7	J. Fletcher Creamer & Sons	2010	Wholesale Electricity	-	-
Stafford Park Solar Farm	2	NJ	Stafford Twp	Other	Walters Group	Private	370	Landfill	Solar PV	6.00	30.0	Walters Group	2011	Onsite Use - General	-	-
Tinton Falls Solar	2	NJ	Tinton Falls	Mine Lands	Tinton Falls Solar Farm, LLC / Zongyi Solar America Co.	Private	97	Sand and gravel mining	Solar PV	20.00	97.0	Zongyi Solar America	2013	Wholesale Electricity	-	-
Trenton Solar Farm	2	NJ	Trenton	Brownfield	PSE&G	Private	-	Gas manufacturing	Solar PV	1.30	5.5	PSE&G	2010	Wholesale Electricity	-	-
Chevron Questa Project	6	NM	Questa	Superfund	Chevron Mining	Private	-	Mining Site	Solar PV	1.00	20.0	Chevron Technology Venture	2011	Wholesale Electricity	-	-
Emcore Eubank Landfill	6	NM	Albuquerque	Brownfield	New Mexico State Land Office	Municipal	40	MSW Landfill	Solar PV	2.00	17.0	Emcore/Suncore	2013	Onsite Use - General	-	Yes
Nellis AFB Solar Array II Generating Station	9	NV	Las Vegas	RCRA	U.S. Department of Defense	Federal	14,000	Landfill	Solar PV	15.00	102.0	SunPower	2016	Onsite Use - General	-	Yes
Nellis AFB Solar Facility Site I	9	NV	Las Vegas	RCRA	U.S. Air Force	Federal	14,000	Landfill/landfill buffer	Solar PV	13.20	140.0	MMA Renewable Ventures LLC	2007	Onsite Use - General	Yes	Yes
Bethlehem Steel Sun	2	NY	Lackawanna	RCRA	Tecumseh Redevelopment Inc	Private	1,200	Steel Mill	Solar PV	4.00	25.0	BQ Energy	2014	Wholesale Electricity	-	-
Bethlehem Steel Winds I	2	NY	Hamburg / Lackawanna	RCRA	Tecumseh Redevelopment Inc	Private	1,600	Steel Mill	Wind	20.00	30.0	BQ Energy and First Wind	2007	Wholesale Electricity	-	-
Bethlehem Steel Winds II	2	NY	Hamburg / Lackawanna	RCRA	Tecumseh Redevelopment Inc	Private	1,600	Steel Mill	Wind	15.00	30.0	BQ Energy and First Wind	2012	Wholesale Electricity	-	-
Clifton Park Landfill	2	NY	Clifton Park	Landfill	Town of Clifton Park	Municipal	25	MSW landfill	Solar PV	1.00	9.0	Onyx Renewable Partners	2017	Wholesale Electricity	-	Yes

RE-Powering America's Land Initiative: Project Tracking Matrix

October 2017

Through the RE-Powering America's Land initiative, the EPA encourages renewable energy development on potentially contaminated land when aligned with the community's vision for the site. This list tracks completed projects where renewable energy systems have been installed on potentially contaminated lands, landfills, or mine sites. Project capacity data reflect total system capacity, which may be installed in whole or in part on potentially contaminated lands, landfills, or mine sites. For systems with an installed capacity less than 10 kW, the capacity is shown as 0.00. Where information was not found for a given site, it is noted as "Unknown" or with a "-" for numerical values. This information is sorted by "State" and then by "Project Name." Installations newly added for October 2017 are highlighted in orange. Projects highlighted in blue represent multiple installations on a single site (location).

This resource is for informational purposes only. The information in this list was gathered from public announcements of renewable energy projects in the form of company press releases, news releases, and, in some cases, conversations with the parties involved. It may not be a comprehensive list of all projects completed on contaminated land. Projects on this list include ground-mounted utility-scale systems, rooftop systems, and systems used for onsite power, including to power cleanup activities. To provide information on additional projects, please email cleanenergy@epa.gov.

1. Site Description									2. Renewable Energy Information				3. Project Implementation			
Site/Project Name	EPA Region	State	City	Type of Site	Site Owner	Site Ownership Type	Property Acreage	Former Use Description	RE Type	Project Capacity (MW)	Project Acreage	Primary RE Developer Name	Completion Date	Project Type	Current/Former Federal Asset	Landfill Application (Cross Program)
Former Ferdula Landfill	2	NY	Frankfurt	Landfill	Unknown	Unknown	2	MSW Landfill	Wind	-	-	Unknown	1998	Onsite Use - Green Remediation	-	Yes
Honeywell Water Treatment Plant	2	NY	Camillus	Unknown	Honeywell Corporation	Private	-		Solar PV	1.50	-	O'Connell Electric	-	Unknown	-	-
Hoosick Falls Solar Garden	2	NY	Village of Hoosick Falls	Landfill	Village of Hoosick Falls	Municipal	27	MSW Landfill	Solar PV	0.59	-	Monolith Solar	2015	Wholesale Electricity	-	Yes
Islip Municipal Town Landfill	2	NY	Hauppauge	Landfill	Town of Islip	Municipal	55	MSW Landfill	Solar PV	0.05	-	Town of Islip	2011	Wholesale Electricity	-	Yes
Long Island Solar Farm at Brookhaven National Laboratory	2	NY	Upton	Superfund	U.S. DOE	Federal	-	Previously disturbed land at DOE Nat'l Lab Facility	Solar PV	32.00	200.0	Long Island Solar Farm, LLC (BP Solar and MetLife)	2011	Wholesale Electricity	Yes	-
Madison County Agriculture and Renewable Energy Park	2	NY	Lincoln	Landfill	Madison County	Municipal	600	MSW Landfill	Solar PV	0.05	1.0	Carlisle Energy Services, Inc.	2011	Onsite Use - General	-	Yes
Madison County Landfill (Canastota)	2	NY	Canastota	Landfill	Madison County	Municipal	-	MSW landfill	Solar PV	0.05	-	Solar Liberty Electric	2014	Onsite Use - General	-	Yes
Olean Gateway "Solean"	2	NY	Olean	State Brownfields	Krog Corp.	Private	60	Oil refining, fertilizer manufacturing	Solar PV	4.00	24.0	BQ Energy	2017	Wholesale Electricity	-	-
Olean Gateway "Solean" West	1	NY	Olean	State Brownfields	Krog Corp.	Private	24	Oil refining, fertilizer manufacturing	Solar PV	1.50	24.0	BQ Energy	2016	Wholesale Electricity	-	-
PatterSun NY #1	2	NY	Patterson	Landfill	Town of Patterson	Municipal	10	MSW Landfill	Solar PV	0.94	-	BQ Energy	2015	Wholesale Electricity	-	Yes
PatterSun NY #2	1	NY	Patterson	Landfill	Town of Patterson	Municipal	25	MSW Landfill	Solar PV	1.30	-	BQ Energy	2016	Wholesale Electricity	-	Yes
Tech City	2	NY	Ulster	RCRA	Tech City	Private	256	Computer mainframe development and testing facility	Solar PV	0.05	-	Solartech Renewables Inc.	2011	Rooftop	-	-
Walkkill Landfill	1	NY	Walkkill	Landfill	Town of Walkkill	Municipal	68	MSW Landfill	Solar PV	2.00	8.0	GE Renewable Energy	2016	Wholesale Electricity	-	Yes
Weibel Avenue Landfill	2	NY	Saratoga Springs	Landfill	Town of Saratoga Springs	Municipal	-	MSW Landfill	Solar PV	2.50	14.6	Onyx Renewable Partners	2017	Wholesale Electricity	-	Yes

RE-Powering America's Land Initiative: Project Tracking Matrix

October 2017

Through the RE-Powering America's Land initiative, the EPA encourages renewable energy development on potentially contaminated land when aligned with the community's vision for the site. This list tracks completed projects where renewable energy systems have been installed on potentially contaminated lands, landfills, or mine sites. Project capacity data reflect total system capacity, which may be installed in whole or in part on potentially contaminated lands, landfills, or mine sites. For systems with an installed capacity less than 10 kW, the capacity is shown as 0.00. Where information was not found for a given site, it is noted as "Unknown" or with a "--" for numerical values. This information is sorted by "State" and then by "Project Name." Installations newly added for October 2017 are highlighted in orange. Projects highlighted in blue represent multiple installations on a single site (location).

This resource is for informational purposes only. The information in this list was gathered from public announcements of renewable energy projects in the form of company press releases, news releases, and, in some cases, conversations with the parties involved. It may not be a comprehensive list of all projects completed on contaminated land. Projects on this list include ground-mounted utility-scale systems, rooftop systems, and systems used for onsite power, including to power cleanup activities. To provide information on additional projects, please email cleanenergy@epa.gov.

1. Site Description									2. Renewable Energy Information				3. Project Implementation			
Site/Project Name	EPA Region	State	City	Type of Site	Site Owner	Site Ownership Type	Property Acreage	Former Use Description	RE Type	Project Capacity (MW)	Project Acreage	Primary RE Developer Name	Completion Date	Project Type	Current/Former Federal Asset	Landfill Application (Cross Program)
West Nyack Landfill	2	NY	Clarkstown	Landfill	Town of Clarkstown	Municipal	-	MSW landfill	Solar PV	2.36	13.0	OnForce Solar	2014	Wholesale Electricity	-	Yes
West Park Landfill (Floyd Ackert Rd.)	2	NY	Esopus	Landfill	Town of Esopus	Municipal	-	MSW Landfill	Solar PV	0.60	-	BQ Energy	2017	Wholesale Electricity	-	Yes
Williamson Landfill	2	NY	Williamson	Landfill	Town of Williamson	Municipal	-	MSW Landfill	Solar PV	1.50	-	Sustainable Energy Developments	2014	Wholesale Electricity	-	Yes
Cuyahoga Metropolitan Housing Authority	5	OH	Cleveland	Brownfield	Cuyahoga Metropolitan Housing Authority	Municipal	12	Industrial Use	Solar PV	1.10	6.0	Carbon Vision	2013	Wholesale Electricity	-	-
Dayton Tech Town	5	OH	Dayton	Brownfield	Unknown	Unknown	-	Former Automotive Site	Geothermal	-	-	Heapy Engineering	2010	Onsite Use - General	-	-
Medical Center Company Solar	5	OH	Cleveland	Brownfield	Unknown	Unknown	6	Unknown	Solar PV	1.00	-	Medical Center Company	2014	Wholesale Electricity	-	-
Pilkington North America	5	OH	Northwood	Brownfield	Pilkington North America, Inc.	Private	11	Glass Manufacturing Facility	Solar PV	0.25	1.0	Hull & Associates	2011	Onsite Use - General	-	-
Toledo Zoo Solar	5	OH	Toledo	Brownfield	Anthony Wayne Solar Number 1	Private	22	Elevator factory	Solar PV	2.10	-	Rudolph/Libbe and GEM Energy	2014	Onsite Use - General	-	-
Wood County Landfill	5	OH	Bowling Green	Landfill	Wood County	Municipal	60	MSW Landfill	Wind	7.20	4.0	American Municipal Power	2004	Wholesale Electricity	-	Yes
Altus Air Force Base	6	OK	Altus	RCRA	U.S. Air Force	Federal	-	Federal Facility, Flight Training Center	Solar PV	0.00	-	Unknown	2007	Onsite Use - Green Remediation	Yes	-
Guthrie Green	6	OK	Tulsa	Brownfield	George Kaiser Family Foundation	Foundation	-	Industrial	Geothermal w/ solar PV	-	-	Unknown	2012	Onsite Use - General	-	-
Columbia Ridge Landfill	10	OR	Arlington	Landfill Buffer	Waste Management	Private	12,000	MSW and Industrial Landfill - active	Wind	100.00	-	PacifiCorp	2004	Wholesale Electricity	-	Yes
Casselman Wind Power Project	3	PA	Traverses Summit, Black, and Addison	Mine Lands	Iberdrola Renewables, LLC	Private	2,000	Surface Coal Mine and adjacent land	Wind	34.50	165.0	Iberdrola Renewables LLC	2008	Wholesale Electricity	-	-
Exelon-Conergy Solar Energy Center	3	PA	Falls Township	Landfill Buffer	Waste Management of Pennsylvania	Private	17	Buffer to Geological Reclamation Operations and Waste Systems landfill	Solar PV	3.00	16.5	Conergy Company	2008	Wholesale Electricity	-	Yes

RE-Powering America's Land Initiative: Project Tracking Matrix

October 2017

Through the RE-Powering America's Land initiative, the EPA encourages renewable energy development on potentially contaminated land when aligned with the community's vision for the site. This list tracks completed projects where renewable energy systems have been installed on potentially contaminated lands, landfills, or mine sites. Project capacity data reflect total system capacity, which may be installed in whole or in part on potentially contaminated lands, landfills, or mine sites. For systems with an installed capacity less than 10 kW, the capacity is shown as 0.00. Where information was not found for a given site, it is noted as "Unknown" or with a "-" for numerical values. This information is sorted by "State" and then by "Project Name." Installations newly added for October 2017 are highlighted in orange. Projects highlighted in blue represent multiple installations on a single site (location).

This resource is for informational purposes only. The information in this list was gathered from public announcements of renewable energy projects in the form of company press releases, news releases, and, in some cases, conversations with the parties involved. It may not be a comprehensive list of all projects completed on contaminated land. Projects on this list include ground-mounted utility-scale systems, rooftop systems, and systems used for onsite power, including to power cleanup activities. To provide information on additional projects, please email cleanenergy@epa.gov.

1. Site Description									2. Renewable Energy Information				3. Project Implementation			
Site/Project Name	EPA Region	State	City	Type of Site	Site Owner	Site Ownership Type	Property Acreage	Former Use Description	RE Type	Project Capacity (MW)	Project Acreage	Primary RE Developer Name	Completion Date	Project Type	Current/Former Federal Asset	Landfill Application (Cross Program)
Frey Farm Landfill	3	PA	Conestoga	Landfill	Lancaster Cnty Solid Waste Mgmt Authority	Municipal	-	MSW Landfill - active	Wind	3.20	10.3	Energy Power Partners, LLC	2011	Local Use	-	Yes
Highland North Wind	3	PA	Cambria County	Mine Lands	Everpower, others	Public/Private	3,500	Strip mine	Wind	75.00	3,500.0	Everpower	2012	Wholesale Electricity	-	-
Highland Wind	3	PA	Cambria County	Mine Lands	Everpower	Private	4,000	Strip mine	Wind	62.50	4,000.0	Everpower	2009	Wholesale Electricity	-	-
York County Landfill Solar	3	PA	Hopewell Township	Landfill	York County Solid Waste Authority	Municipal	-	MSW Landfill	Solar PV	0.30	2.0	Solar Renewable Energy, LLC	2014	Onsite Use - Green Remediation	-	Yes
East Providence Landfill Solar Farm	1	RI	East Providence	Landfill	City of East Providence	Municipal	229	MSW landfill	Solar PV	3.70	14.0	CME OCI Solar Power LLC / CME Energy	2014	Wholesale Electricity	-	Yes
Savannah River's Biomass Steam Plant	4	SC	Aiken	Superfund	U.S. DOE	Federal	34	1950s vintage coal-fired steam plant	Biomass	20.00	34.0	Ameresco Inc	2008	Onsite Use - General	Yes	-
Binkley Solar Farm	4	TN	Hermitage	Landfill	Binkley family	Private	-	Construction and Demolition Landfill	Solar PV	0.20	-	Stansell Electric	2012	Wholesale Electricity	-	Yes
Bristol Demolition Landfill	4	TN	Bristol	Landfill	City of Bristol	Municipal	-	Demolition landfill	Solar PV	0.20	-	EcoLogical Energy Systems	2012	Wholesale Electricity	-	Yes
RSI Brightfields One	4	TN	Oak Ridge	Brownfield	Restoration Services, Inc. (RSI)	Private	1	Former DOE Gaseous Diffusion Plant	Solar PV	0.20	1.0	RSI	2012	Wholesale Electricity	Yes	-
Volkswagen Chattanooga	4	TN	Chattanooga	RCRA	Volkswagon	Private	33	Former Army Ammunition Plant	Solar PV	9.50	33.0	Silicon Ranch	2013	Wholesale Electricity	Yes	-
Central Texas Veterans Landfill Solar	6	TX	Temple	Landfill	Department of Veterans Affairs	Federal	-	Landfill	Solar PV	2.94	-	REC Solar	2012	On-site Use - General	-	Yes
Grove Landfill	6	TX	Austin	Landfill	Rhizome Collective, Inc	Non-profit	10	Landfill (Illegal dumping)	Solar PV	-	-	Unknown	2006	Onsite Use - Green Remediation	-	Yes
Pantex Renewable Energy Project (PREP)	6	TX	Amarillo	Superfund	U.S. Department of Energy NNSA and Texas Tech University	Federal	16,000	Nuclear weapon assembly and disassembly	Wind	11.50	1,500.0	Siemens USA	2014	Onsite Use - General	Yes	-
Tessman Road Municipal Solid Waste Landfill	6	TX	San Antonio	Landfill	Republic Services, Inc	Private	680	MSW Landfill	Solar PV	0.13	5.6	CSP Energy	2009	Wholesale Electricity	-	Yes



RE-Powering America's Land Initiative: Project Tracking Matrix

October 2017

Through the RE-Powering America's Land initiative, the EPA encourages renewable energy development on potentially contaminated land when aligned with the community's vision for the site. This list tracks completed projects where renewable energy systems have been installed on potentially contaminated lands, landfills, or mine sites. Project capacity data reflect total system capacity, which may be installed in whole or in part on potentially contaminated lands, landfills, or mine sites. For systems with an installed capacity less than 10 kW, the capacity is shown as 0.00. Where information was not found for a given site, it is noted as "Unknown" or with a "--" for numerical values. This information is sorted by "State" and then by "Project Name." Installations newly added for October 2017 are highlighted in orange. Projects highlighted in blue represent multiple installations on a single site (location).

This resource is for informational purposes only. The information in this list was gathered from public announcements of renewable energy projects in the form of company press releases, news releases, and, in some cases, conversations with the parties involved. It may not be a comprehensive list of all projects completed on contaminated land. Projects on this list include ground-mounted utility-scale systems, rooftop systems, and systems used for onsite power, including to power cleanup activities. To provide information on additional projects, please email cleanenergy@epa.gov.

1. Site Description									2. Renewable Energy Information				3. Project Implementation			
Site/Project Name	EPA Region	State	City	Type of Site	Site Owner	Site Ownership Type	Property Acreage	Former Use Description	RE Type	Project Capacity (MW)	Project Acreage	Primary RE Developer Name	Completion Date	Project Type	Current/Former Federal Asset	Landfill Application (Cross Program)
Salt Lake City Landfill	8	UT	Salt Lake City	Landfill	Salt Lake City	Municipal	4	MSW Landfill	Solar PV	1.00	4.0	Taylor Electric	2014	Unknown	-	Yes
Crozet Orchard	3	VA	Crozet	Superfund Removal	Unknown	Private	-	Apple Orchard	Solar PV	-	-	Unknown	2007	Onsite Use - Green Remediation	-	-
Salem VA Medical Center Solar	3	VA	Salem	Landfill	U.S. Department of Veterans Affairs	Federal	6	Landfill	Solar PV	1.60	6.0	REC Solar	2013	Onsite Use - General	Yes	-
Former St. Croix Alumina Plant Solar I	2	VI	St Croix	RCRA	Unknown	Unknown	-	Alumina Plant	Solar PV	0.00	-	Unknown	2003	Onsite Use - Green Remediation	-	-
Former St. Croix Alumina Plant Solar II	2	VI	St Croix	RCRA	Unknown	Unknown	-	Alumina Plant	Solar PV	0.00	-	Unknown	2006	Onsite Use - Green Remediation	-	-
Former St. Croix Alumina Plant Wind I	2	VI	St Croix	RCRA	Unknown	Unknown	-	Alumina Plant	Wind	-	-	Unknown	2002	Onsite Use - Green Remediation	-	-
Former St. Croix Alumina Plant Wind II	2	VI	St Croix	RCRA	Unknown	Unknown	-	Alumina Plant	Wind	-	-	Unknown	2006	Onsite Use - Green Remediation	-	-
Basketville Site	1	VT	Putney	Brownfield	Unknown	Unknown	6	Manufacturing	Solar PV	0.16	-	Integrated Solar	2013	Unknown	-	-
Coventry Landfill	1	VT	Coventry	Landfill Buffer	Casella Waste Systems	Private	-	MSW Landfill Buffer	Solar PV	2.70	12.0	Coventry PV (subsidiary of Borrego Solar)	2015	Wholesale Electricity	-	Yes
Elizabeth Mine Superfund Site	1	VT	Stafford	Superfund	Private (five direct owners)	Private	1,400	Abandoned Copper Mine	Solar PV	7.00	28.0	Brightfields and Greenwood Energy	2017	Wholesale Electricity	-	-
Rutland Landfill (Stafford Hill)	1	VT	Rutland	Landfill	City of Rutland	Municipal	15	MSW Landfill	Solar PV	2.30	9.0	Green Mountain Power	2015	Wholesale Electricity	-	Yes
Townshend Landfill	1	VT	Townshend	Landfill	Town of Townshend	Municipal	-	MSW Landfill	Solar PV	0.15	-	Soveren Solar	2014	Wholesale Electricity	-	Yes
Beloit Coal Ash Landfill	5	WI	Beloit	Landfill	Alliant Energy	Private	20	Coal Ash Landfill	Solar PV	2.30	17.0	Hanwha Q CELLS USA	2016	Wholesale Electricity	-	Yes
MATC PV Evaluation Lab	5	WI	Milwaukee	Landfill	Milwaukee Area Technical College (MATC)	Private	32	MSW Landfill	Solar PV	0.54	32.0	MATC and Johnson Controls	2010	Onsite Use - Training	-	Yes

RE-Powering America's Land Initiative: Project Tracking Matrix

October 2017

Through the RE-Powering America's Land initiative, the EPA encourages renewable energy development on potentially contaminated land when aligned with the community's vision for the site. This list tracks completed projects where renewable energy systems have been installed on potentially contaminated lands, landfills, or mine sites. Project capacity data reflect total system capacity, which may be installed in whole or in part on potentially contaminated lands, landfills, or mine sites. For systems with an installed capacity less than 10 kW, the capacity is shown as 0.00. Where information was not found for a given site, it is noted as "Unknown" or with a "-" for numerical values. This information is sorted by "State" and then by "Project Name." Installations newly added for October 2017 are highlighted in orange. Projects highlighted in blue represent multiple installations on a single site (location).

This resource is for informational purposes only. The information in this list was gathered from public announcements of renewable energy projects in the form of company press releases, news releases, and, in some cases, conversations with the parties involved. It may not be a comprehensive list of all projects completed on contaminated land. Projects on this list include ground-mounted utility-scale systems, rooftop systems, and systems used for onsite power, including to power cleanup activities. To provide information on additional projects, please email cleanenergy@epa.gov.

1. Site Description									2. Renewable Energy Information				3. Project Implementation			
Site/Project Name	EPA Region	State	City	Type of Site	Site Owner	Site Ownership Type	Property Acreage	Former Use Description	RE Type	Project Capacity (MW)	Project Acreage	Primary RE Developer Name	Completion Date	Project Type	Current/Former Federal Asset	Landfill Application (Cross Program)
Refuse Hideaway Landfill	5	WI	Middleton	Superfund	State of Wisconsin	State	23	Municipal, commercial, and industrial landfill	Solar PV	0.01	0.1	Full Spectrum Solar Company	2010	Onsite Use - Green Remediation	-	Yes
Chevron Casper Wind Farm	8	WY	Casper	RCRA	Chevron	Private	880	Refinery	Wind	16.50	880.0	Chevron Global Power Company	2009	Wholesale Electricity	-	-
Dave Johnston Mine / Glenrock Wind I	8	WY	Glenrock	Mine Lands	PacificCorp	Private	14,000	Surface Coal Mine	Wind	118.50	300.0	PacificCorp	2008	Wholesale Electricity	-	-
Dave Johnston Mine / Glenrock Wind III	8	WY	Glenrock	Mine Lands	PacificCorp	Private	14,000	Surface Coal Mine	Wind	39.00	300.0	PacificCorp	2009	Wholesale Electricity	-	-
Dave Johnston Mine / Rolling Hills	8	WY	Glenrock	Mine Lands	PacificCorp	Private	14,000	Surface Coal Mine	Wind	118.50	300.0	PacificCorp	2009	Wholesale Electricity	-	-
Warren AFB Wind	8	WY	Cheyenne	Superfund Non-NPL	U.S. Air Force	Federal	-	Former gunnery range	Wind	3.32	-	Unknown	2009	Wholesale Electricity	Yes	-