

NOTICE OF INTENT

RECEIVED
05/31/2017 8:23

NATIONAL POLLUTANT DISCHARGER ELIMINATION SYSTEM N.P.D.E.S. PHASE II

REGULATED SMALL MUNICIPAL SEPARATE STORM
SEWER SYSTEM [MS-4s]

RECEIVED
OFFICE OF PLANNING AND
URBAN DEVELOPMENT

2017 MAY 31 PM 5: 11



HON. ANGELO CRUZ RAMOS
MAYOR

MUNICIPAL GOVERNMENT OF CEIBA
INDIVIDUAL PERMITE
[E.P.A. REGION 2 PUERTO RICO]

PREPARED BY: EFRAÍN HERNÁNDEZ CARRASQUILLO, L.P.S.D.
N.P.D.E.S. / MS-4 PROGRAM MANAGER

&
TECHNICAL
OFFICE OF PLANNING AND URBAN DEVELOPMENT
MUNICIPAL GOVERNMENT OF CEIBA



NOTICE OF INTENT

NATIONAL POLLUTANT DISCHARGER ELIMINATION SYSTEM N.P.D.E.S. PHASE II

REGULATED SMALL MUNICIPAL SEPARATE STORM
SEWER SYSTEM [MS-4s]

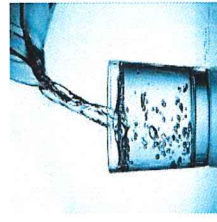
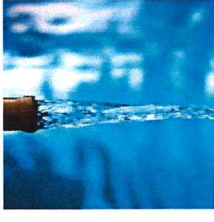


HON. ANGELO CRUZ RAMOS
MAYOR

MUNICIPAL GOVERNMENT OF CEIBA
INDIVIDUAL PERMITE
[E.P.A. REGION 2 PUERTO RICO]

PREPARED BY: EFRAÍN HERNÁNDEZ CARRASQUILLO, L.P.S.D.
N.P.D.E.S. / MS-4 PROGRAM MANAGER

&
TECHNICAL
OFFICE OF PLANNING AND URBAN DEVELOPMENT
MUNICIPAL GOVERNMENT OF CEIBA





May 10, 2017

Eng. Sergio Bosques
Regional Storm Water Coordinator
Caribbean Environmental Protection Division
City View Plaza II – Suite 7000
#48 Rd. 165 km 1.2
Guaynabo, Puerto Rico 00968-8069

NOTICE OF INTENT-NOI- MUNICIPALY OF CEIBA/ AMENDE
FOR STORM WATER DISCHARGES FROM SMALL MS-4s IN URBANIZED AREAS

The Clean Water Act, Section 402, requires that storm water discharges, associated with Municipal separate storm sewer system [MS-4] in urbanized areas, to water of the US must be authorized by a **National Pollutant Discharge Elimination System** [N.P.D.E.S.] permit. In order to comply with this requirement, we are submitting our Notice of Intent for the NPDES Permit no. PRRR040075.

The updated S.W.M.P. [**S**torm **W**ater **M**anagement **P**rogram], document will be modified in the next 6 (six) months as required. The municipality of Ceiba has the intention of comply with the Permit's provision and E.P.A., requirements. If you need additional information, do not hesitate to contact us at the Mayor's Offices at 787-885-2180 ext. 223 & 225 or sending an email at alcaldia@ceibapr.com or ehernandez@ceiba-pr.com

I remain cordially,


Angelo Cruz Ramos
Mayor
Municipality of Ceiba

Attached to this letter N.O.I.

C

Part A. General Information

1. Name of Municipality or Organization: GOBIERNO MUNICIPAL DE CEIBA
2. Type: Federal State Municipality Other: _____

3. Existing Permittee: Yes No If yes, provide EPA NPDES Permit Number: PR R 0 4 0 0 7 5

4. Location Address:

a. Street: AVENIDA LAURO PIÑERO / CASA ALCALDIA

b. City: _____ State: PR Zip Code: 00735

5. Mailing Address:

a. Street: CALLE JOSE T. QUIÑONES

b. City: _____ State: PR Zip Code: 00735

6. Telephone Number: 787-885-2180 EXT. 225 Fax: 787-885-5137

7. E-mail: ALCALDIA@CEIBA-PR.COM OR EHERNANDEZ@CEIBA-PR.COM

8. Standard Industrial Classification (SIC) Code (see instructions for common codes): _____

9. Latitude: (use the format provided.) _____

Approximate center of the regulated portion of the MS4. Longitude: (use the format provided.) _____

1 8° 15' 52. 38" N (degrees, minutes, seconds)

65° 38 ' 55 37" W (degrees, minutes, seconds)

Or

_____ ° N (degrees decimal)

_____ ° W (degrees decimal)

Part B. Primary MS4 Program Manager Contact Information

1. Name: EFRÁIN HERNÁNDEZ CARRASQUILLO

2. Position Title: **TECHNICAL PLANNING OFFICE**

3. Stormwater Management Program (SWMP) Location (web address or physical location): CASA ALCALDIA,

AVENIDA LAURO PIÑERO / CEIBA, PUERTO RICO

4. Mailing Address:

a. Street: P.O. BOX 224/ CASA ALCALDIA DE CEIBA

b. City: _____ State: PR Zip Code: 00735

5. Telephone Number: 787-885-2180 EXT. 225 & 227

6. E-mail: EHERNANDEZ@CEIBA-PR.COM

Part C. Eligibility Determination

1. Endangered Species Act (ESA) determination complete? Yes No
 - a. Eligibility Criteria (check all that apply): A B C D E
2. National Historic Preservation Act (NHPA) determination complete? Yes No
 - a. Eligibility Criteria (check all that apply): A B C D

Part D. Map/Boundaries SEE ATTACHMENT # 1

MS4/Organization Description of regulated boundaries (narrative): The Municipality of Ceiba is located in the coastal plain to the East Coast of the Island at Latitude 18° 15' 52.26" N and Longitude 65°38'42.21" W. It has a territorial extension of 27.5 square miles. Ceiba is bounded by north with the Luquillo and Fajardo municipalities; south with the Naguabo Municipality; west with the municipalities of Río Grande and Naguabo, and by the East with Caribbean Sea. Ceiba is divided into 8 wards: Saco, Chupacallos, Río Abajo, Machos, Quebrada Seca, Daguao, Guayacán and downtown Ceiba. Ceiba is about a 1 hour drive east of San Juan, traffic permitting. It is located on Route 3, beyond Fajardo, and lies in the eastern corner of Puerto Rico. According to the Census 2000, the municipality has a population of 18,004 inhabitants. The town is changing rapidly as Ceiba is home of recently closed Roosevelt Roads Naval Base now called "Por Donde El Sol Sale Primero". The area is being considered by the State Government for a major redevelopment project. Due to the proximity to Vieques, Culebra and the USVI, it presents an appealing natural environment and a peaceful residential setting for those who work in the busy urban areas of San Juan. The potential development projects being promoted by the State government present a great challenge to the local administration and will make necessary a process of defining its future.

The Municipality recognizes the negative implications of the city's declining historic core, and the growing environmental issues associated with urban sprawl and the lack of infrastructure.

Cognizant of the pressure to its greatest treasure -the natural environment -and the seemingly reduced control it has over new developments, the town's political leadership recognizes the need for formulating strategies that will mould the town's growth in directions that it and residents are more comfortable with. To this end, the Municipality of Ceiba commissioned the development of a Strategic Management Plan, aware that a holistic

effort that encompasses economic issues, land uses and density, transportation and infrastructure networks, services and open space will best serve in recapturing control over its future. The Municipality also commissioned the development of a comprehensive Land Use Plan for the entire Municipality. This Land Use Plan shall be approved in 2010 by the Planning Board and the Governor of Puerto Rico and classifies the land of the Municipality to accommodate future development, and to preserve valuable land areas and resources. Approximately X %+ of the land in the Municipality will be protected and impose development restrictions in order to control suburban sprawl and protect our natural resources and quality of life.

The Plan defines the image of Ceiba for the year 2020. It identifies the strategic development initiatives - physical, economic, and social -that need to be programmed and executed immediately, in the short-term (20X), the medium-term (20X) and the long term (20X) for achieving a well-considered set of goals. The document, emerge from a comprehensive public process that would engage citizens, political leaders, professionals, and key stakeholders. The Plan also establishes Ceiba's role in the regional economy. It highlights its assets – La Riviera del Caribe - and outlines a marketing strategy that will best utilize and simultaneously preserve them. The Municipality of Ceiba Store Sewer System (MS4s) in the urban area in general consists of a series of open channel culverts and match basins, typically located within the right-of-way of municipal and state roads, interconnected by underground concrete, corrugated steel or PVC pipes which normally discharge into the municipal creeks and streams, specially into the Santa María and Miraflores Creeks. The Urban Area of the Ceiba Municipality is part of X watersheds. As the Ceiba Municipality implements the proposed Storm Water Management Program a more accurate map will be provided.

The Urban Area of the Ceiba Municipality is part of x watersheds basically divided into the west and east part of the urban zone: Watershed no. x consist on the west side of the urban area, it is located west of the intersection of PR-X with PR-X. Runoff on this area discharges on X Creeks. Basically the areas west of PR- X, north of PR-X will discharge on X Creek while, areas east of PR-X, northeast and southeast of PR-x will run towards X Creek. Watershed no. x consist on the east side of the urban area, located east of the intersection of PR-171 with PR-x, the area north of PR-x which runs southeast; the area south of PR-x and north of PR-l which runs east; the area south of PR-l which runs north and the area south of PR-x which also runs north, all towards x Creek.

Estimated square miles served by the MS4

The Ceiba's urban zone is located east of PR-3 and the José Celso Barbosa Expressway. It includes its traditional urban center (Pueblo Ward). The municipal urban area has a population of 6,227 and a territorial extension of

approximately X square miles. The municipality has a territorial extension of 29.0 miles of which X square miles are classified as urban area (for purposes of the Ceiba's MS4 Management Plan, only the delineated urban area is considered the services area of the municipality by storm sewer system).

9. Description of the Best Management Practices to be implemented by the Municipality As required by the 40 CFR 122.34, Subpart B, the Municipality of Ceiba will develop a Storm Water Pollution Prevention Plan (SWPPP), to comply with the Clean Water Act provisions. The SWPPP will be based on the minimum control measures included in the paragraph (b) of the referred section. There are six minimum control measures that include:

- 1) Public education and outreach on storm water impacts,
- 2) Public Involvement and Participation,
- 3) Illicit discharge detection and & elimination,
- 4) Construction,
- 5) Post - Construction,
- 6) Pollution Prevention/Good Housekeeping. The Municipality of Ceiba will develop, implement and enforce actions in each of the minimum pollutants in our Municipality. The Best Management Practices for the SWPPP of the Municipality of Ceiba will be based on the USEPA's National Menu of Stormwater Best Management Practices. Controls measures to protect our water quality, and reduce the discharge of

The following are the Six Minimum Control Measures and its BMP to be implemented by the Municipality of Ceiba in their MS4s.

The MS-4 cover urbanized areas in the following ward: Ur. Santa Maria, Colonia Santa Maria, Urb. Las Vegas de Ceiba, Urb. Brisas de Ceiba I & II, Urb. Los Paseo de Ceiba, Urb. Villas del Pilar, Urb .Extensión Villas del Pilar, Sector Polo Norte, Urb. Ramos Antonini, Sector Villa flores, Sector Rosa Vira, Urb. Jardines Ávila, Urb. Roosevelt Valley, Sector Casco Pueblo Centro, Sector Capa, Calle Carlos Carlos Figueroa, Desvió Felicita Rincón de Gautier, Portal de Ceiba, Urb. Celina, Urb. Jardines de Ceiba I & II, Urb. Celina, Residencial La Seyba, Residencial Del Valle, Residencial Jardines de Ceiba.

The are 246 outfall identified discharging to Quebrada Limones, Quebrada Santa María, Quebrada Aguas Claras, Quebrada Medio Mundo, and tributary creeks. The basic of the Ceiba SMS-4 includes Street cath basin and

updated pluvial system is the typical system in concrete with grills in metal and concrete where it has been designed in its entirety by Aqueducts and Sewers of Puerto Rico.

1. Location Map/Boundaries. A location map must be attached showing the pertinent city, town, wards, or boundaries, the boundaries of the Small MS4, including surface water body(s), and the "urbanized area" (UA) when applicable.

Is map attached? ● Yes ○ No

[[SEE APPENDIX A MAP](#)]

Part E. MS4 Infrastructure (if covered under the 2006 general permit)

1. Estimated Percent of Outfall Map Complete? (*Part 4.2.3 of 2006 general permit*): 50%

a. If 100% of 2006 requirements are not met, enter an estimated date of completion: UNKNOWN

- a. Web address where MS4 map is published: NONE.
If outfall map is unavailable on the internet an electronic or paper copy of the outfall map must be included with NOI submission.

Part F. Bylaw/Ordinance Development (if covered under the 2006 general permit)

1. Illicit Discharge Detection and Elimination (IDDE) authority adopted? ● Yes ○ No
 - a. Effective Date or Estimated Date of Adoption: DIC. 2017
(MM/DD/YYYY)
2. Construction/Erosion and Sediment Control authority adopted? ● Yes ○ No
 - a. Effective Date or Estimated Date of Adoption: DIC. 2017
(MM/DD/YYYY)
3. Post-Construction Stormwater Management adopted? ● Yes ○ No
 - a. Effective Date or Estimated Date of Adoption: DIC. 2017

Part G. Receiving Waters

List the names of all surface waterbody segments to which your MS4 discharges. For each waterbody segment, please report the number of outfalls discharging into it and, if applicable, any impairments. You may attach additional information.

Waterbody Segment that receives flow from the MS4	Number of Outfalls into receiving waterbody segment	Have any monitoring been performed to outfalls? (Yes/No)	List of Pollutant(s) causing impairment (if applicable)	List of TMDL Pollutant (s) (if any)
QUEBRADA AGUAS CLARAS	5	YES	FECAL COLIFORM (1700) LOW DISSOLVED OXYGEN (1200) THERMAL MODIFICATIONS (1400)	NONE
QUEBRADA CEIBA	5	YES	FECAL COLIFORM (1700) LOW DISSOLVED OXYGEN (1200)	NONE
RIO DAGUAO	14	YES	FECAL COLIFORM (1700) LOW DISSOLVED OXYGEN (1200)	NONE
RIO DEMAJAGUA	3	YES	FECAL COLIFORM (1700)	NONE
RIO FAJARDO	59	YES	ARSENIC (0510) COPPER (0530) FECAL COLIFORM (1700) TURBIDITY (2500) CYANIDE (0720) MBAS (0400) LOW DISSOLVED	NONE

Part H. Summary of Stormwater Management Program (SWMP) under the 2006 Small MS4 General Permit

For every measurable goal and associated Best Management Practice (BMP) listed in the adopted program, provide the following information (You may include additional pages):

BMP Description or BMP ID (e.g. MCM-1)	Goal Achieved? (Yes/No)	Continued in next permit cycle? (Yes/No)	Who was the targeted audience? Explain reason for not achieving goal.	Modification(s) to goals or BMP for next permit cycle
GENERAL EDUCATION	YES	YES	EMPLOYEED PUBLIC WORK [GENERAL COMMUNITY]	EDUCATION INCREASES BY THE COMMUNITY
PRESENTATIONS RESIDENTIAL OWNER AND COMMUNITY LEADERSHIP AND BUSSINESS OWNER	NO	YES	COMMUNITY SECTOR AND BUSSINESS OWNER	CONTINUE WITH BMP'S IMPLEMENTATION
DEVELOPMENT OF THE MUNICIPAL INFORMATIVE INTERACTIVE BULLETIN	NO	YES	GENERAL COMMUNITY IN CEIBA, MUNICIPAL EMPLOYEES AND BUSSINESS OWNER	COMPLETE WITH STANDARD BMP IMPLEMENTATION
SEPTIC TANK HOME AND BUSSINESS OWNER	NO	YES	GENERAL BUSSINESS AND COMMUNITY SECTOR	CONTINUE WITH STANDAR BMP IMPLEMENTATION
VOLUNTEER EVENT [RIVER CLEANUPS]	YES	YES	GENERAL PUBLIC AND INDIVIDUAL SECTOR	CONTINUE WITH BMP IMPLEMENTATION
INFORM AND SOLICITING PUBLIC INPUT AT THE MUNICIPAL ARCHIEVEMENT REPORT	NO	YES	GENERAL COMMUNITY EMPLOYEE, AND BUSSINESS OWNER	CONTINUE WITH BMP IMPLEMENTATION

Part I. 2016 Stormwater Management Program (SWMP) Summary
 Public Education and Outreach (See Part 2.4.2 for detailed information of required BMPs):

BMP Description or BMP ID (e.g. MCM-1)	Education Topic (Identify the issue your BMP is educating the public about)	Outreach Method (Describe the method used to convey this topic, e.g. mailing, events, school, etc.)	Measurable Goal (What is the end result of this program? What indicator will determine the goal has been met? (e.g. number mailing sent, people at event, class participation, etc.)
VARIOUS MEANS	APPLICATION AND IMPLEMENTATION OF THE LAW 171, OF E.L.A.	EMAIL / TALKS EDUCATION AND CONFERENCES	DEVELOPMENT AND IMPLEMENTATION OF TALKS, WORKSHOPS AND TRAINING EMPLOYEES ON PREVENTING THE STORM SYSTEM AND CONTAMINANTS SYSTEM NATURAL
ALTERNATIVE EDUCATION	GENERAL EDUCATION IN THE COMMUNITIES AND PEOPLE OF THE VILLAGE OF CEIBA ON MEASURES TAKEN TO DO TO REDUCE POLLUTANTS DISCHARGE OF WASTEWATER	DISTRIBUTION OF EDUCATIONAL MATERIALS AND COORDINATING ACTIVITIES INSTRUCT EFFECTIVELY TO COMMUNITIES	EDUCATION COMMUNITY IN GENERAL
COMMUNITY ACTIVE	EDUCATIONAL OPPORTUNITY GRANT TO COMMUNITIES FOR SOCIAL INTEGRATION IN PROGRAM DEVELOPMENT PLAN OF COMMUNITIES	MAXIMIZE ALL COMMUNITY RESOURCES AND CITIZENSHIP FOR POINTS TO ACHIEVE EDUCATION PROGRAM	IMPLEMENT CITIZEN PARTICIPATION IN CHAR, WORKSHOPS WHERE IMPLEMENT ACTIVITIES MONITORINGS. GROUPS INCLUDE DIFFERENT INTERACTUAL WITH NATURE FOR SEED TREES AND OTHER DERIVATIVES OF NATURE.
UPDATE THE EDUCATION MATERIAL ON POLLUTANT OF CONCERN [OF EACH TARGET AUDIENCE]	<input type="checkbox"/> COMMUNITY AND VOLUNTEER PROGRAMS. <input type="checkbox"/> OIL AND GREASE MANAGEMENT IN RESIDENTIAL AREA. <input type="checkbox"/> IDENTIFYING ILLICIT DISCHARGES	EDUCATION CAMPAIGN WILL BE MOSTLY PAPERLESS. PRINTED BROUCHER WILL NOT BE DEVELOPMENT	GENERAL EDUCATION FROM DIFFERENT COMMUNITY
DEVELOP AND SIGN COLLABORATION AGREEMENT WITH LOCAL AGENCIES SUCH AS PUERTO RICO A.A.A. AND OTHER AGENCY	<input type="checkbox"/> FREE WATER INITIATIVES <input type="checkbox"/> ILLICIT CONNECTIONS IN DIFFERENT COMMUNITY	INTEGRATION WITH THE COMMUNITY BY AGREEMENT	MAXIMIZE THE COLLABORATIVE AGREEMENTS BETWEEN GOVERNMENT AGENCIES AND COMMUNITIES

Part I. 2016 Stormwater Management Program (SWMP) Summary (continued)
 Public Involvement and Participation (See Part 2.4.3 for detailed information of required BMPs):

<p>BMP Description or BMP ID (e.g. MCM-1)</p>	<p>Program Description (Describe the program and how it will inspire public participation, e.g. special events, volunteer sampling and monitoring efforts, household hazardous waste recycling, etc.)</p>	<p>Measurable Goal (What is the end result of this program? What indicator will determine the goal has been met? (e.g., participation, amount of sampling performed, waste collected, etc.)</p>
<p>EDUCATIONAL GUIDANCE</p>	<p>IMPLEMENTATION GUIDANCE SYSTEM NOT TO CONTAMINATE PLUVIAL INCYENDO MUNICIPAL DEPARTMENT AND WORKS TO COMMUNITIES [ORIENTATION, TALKS AND OTHER ITEMS AS WARRANTS.]</p>	<p>IN TALKS THAT HAVE ALREADY BEEN MADE ACROSS MITIGATION PLAN IT HAS BEEN EFFECTIVE SO THAT THE COMMUNITY REACTED POSITIVELY.</p>
<p>ACTIVATION OF COMMUNITY GROUPS</p>	<p>IMPLEMENTATION OF ONGOING ACTIVITIES ON GARBAGE COLLECTED IN RIVER BASINS INVOLVEMENT WITH THIS GROUP PRO- NATURE</p>	<p>IN EDUCATIONAL TALKS THAT HAVE ALREADY BEEN MADE THROUGH MITIGATION PLAN IT HAS BEEN EFFECTIVE AND THE COMMUNITY HAS RESPONDED</p>
<p>CONTINUE PUBLISH THE CEIBA INFORMATIVE NEWSPAPER</p>	<p>GENERAL EDUCATION AND S.W.M.P. IMPLEMENTATION ACTIVITIES AND STATUS WILL BE PUBLISHED IN THE INFORMATIVE NEWSPAPER</p>	<p>DEVELOPING AND PUBLISH THE INFORMATIVE NEWSPAPER.</p>
<p>POST DIGITAL AND HARD COPY OF THE S.W.M.P., AND ANNUAL REPORT IN THE MUNICIPAL WEBPAGE AND IN THE ELECTRONIC LIBRARIES</p>	<p>S.W.M.P., WILL POSTED IN THE MUNICIPAL WEB PAGE AN ELECTRONIC LIBRARY TO GIVE THE GENERAL COMMUNITY THE OPPORTUNITY TO REVIEW AND PROVIDE COMMENTS.</p>	<p>NUMBER OF GENERAL COMMUNITY COMMENTS RECEIVED THAT ARE EVALUATED AND ADDRESSED.</p>
<p>CONTINUE WITH THE IMPLEMENTATION OF THE STORM DRAIN MARKING ACTIVITIES</p>	<p>CONTINUE WITH THE ACQUISITION AND INSTALLATION OF THE MARKER ON THE STORM DRAINS.</p>	<p><input type="checkbox"/> TOTAL NUMBER OF STORM DRAIN IDENTIFIED. <input type="checkbox"/> VOLUNTEERS PARTICIPATING IN THE STORMWATER LABELING ACTIVITIES.</p>
<p>CONDUCT EMPLOYEE TRAINING</p>	<p>MUNICIPAL STAFF SHALL BE TRAINED ON; <ul style="list-style-type: none"> ▪ STORMWATER POLLUTION PREVENTION ▪ CEIBA MS-4/ S.W.M.P. REQUIREMENTS. </p>	<p>TRAINING EQUIPMENT DIFFERENT WORK AND TO ITS SUPERVISION</p>
<p>MS-4 POSTAL PLUVIAL FACEBOOK PAGE MUNICIPAL AND OTHER PAGES CREATED BY THE MUNICIPALITY OF CEIBA</p>	<p>SHORT ARTICLES ON HOW TO PREVENT STORMWATER POLLUTION POSTED ON THE MUNICIPAL FACEBOOK PAGE AND OTHER PAGES WILL INFORM AND INSPIRE THE GENERAL AUDIENCES ON WHAT TO DO PREVENT STORMWATER POLLUTION</p>	<p><input type="checkbox"/> NUMBER OR PEOPLE REACHED BY THE FACEBOOK PAGE <input type="checkbox"/> TOTAL LIKES ON FACEBOOK PAGE AND OTHER CYBERNETIC PAGE.</p>

Part I. 2016 Stormwater Management Program (SWMP) Summary (continued)
 Illicit Discharge Detection and Elimination (See Part 2.4.4 for detailed information of required BMPs):

BMP Description or BMP ID (e.g. MCM-1)	Program Description (Describe the program and how it will identify and remove illicit connections from the MS4, e.g. new regulations, investigation practices, removal of illicit connections, etc.)	Measurable Goal (What is the end result of this program? What indicator will determine the goal has been met? (e.g., adoption of bylaws/ordinances, amount of investigation performed, identified and removed illicit connections, etc.)
IMPLEMENTATION OF EMERGENCY PLAN O.P.M. [MUNICIPAL PUBLIC WORKS]	USING THE EMERGENCY PLAN ADOPTED IN CAPACITY IN WORKSHOP O.P.M. [USED ONLY IN CASE OF EMERGENCY]	EFFECTIVE RESPONSE TIME OF ANY EMERGENCY
EMERGENCY PLAN IMPLEMENTATION	USING THE EMERGENCY PLAN ADOPTED IN CAPACITY IN THE WORKSHOP OF PUBLIC WORKS, [USED IN CASE OF EMERGENCY ONLY]	EFFECTIVE RESPONSE TIME OF ANY EMERGENCY
UPDATE THE I.D.D.E., PLAN	THE CEIBA I.D.D.E., PLAN INCLUDED BEST PRACTICE TO IDENTIFY AND ELIMINATE THE MS-4 ILLICIT CONNECTIONS. THE PLAN WILL BE UPDATED TO INCLUDE BMPs, TO ADDRESS THE CURRENT P.O.C. AND POTENTIAL SOURCES.	I.D.D.E., PLAN UPDATED
IMPLEMENT THE UPDATE I.D.D.E. PLAN	IDENTIFY BY WORK IN THE FIELD AND ELIMINATE ILLICIT DISCHARGES AND CONNECTIONS INTO THE MS-4 CATH BASIN AREA WILL BE CONDUCTED ON A REGULAR BASES, AT LEAST ONCE PER MONTH, THE MS-4 TEAM WILL WORK IN THE FIELD IMPLEMENTING THE I.D.D. E. PLAN	AMOUNT OF ILLICIT CONNECTIONS AND DISCHARGES IDENTIFIED AND ELIMINATED.
DEVELOP A DATABASE OF ILLICIT DISCHARGES	ILLICIT CONNECTION IDENTIFIED IN CEIBA MS-4 WILL BE DOCUMENTED	UPDATE THE DATABASE ON A MONTHLY BASIS
IMPLEMENT THE DRY WEATHER AND WET WEATHER OUTFALL MONITORING	TO IDENTIFY POTENTIAL ILLICIT DISCHARGES AND TO MEASURE PROGRESS OF IMPLEMENTING THE I.D.D.E., PLAN, IT IS ESSENTIAL TO DEVELOP AND IMPLEMENT A PROGRAM TO MONITOR THE WATER QUALITY OF THE OUTFALL DISCHARGES.	<ul style="list-style-type: none"> - AMOUNT OF OUTFALLS MONITORED. - WATER QUALITY MONITORING RESULTS.
KEEP THE MS-4 MAPS UPDATED	THE MS-4 MAPS HAVE BEEN COMPLETED AND THE MUNICIPALITY NEEDS TO DEVELOP A SYSTEM TO ENSURE THAT THEY ARE CONTINUOUSLY APDATED. THE MS-4 INFRASTRUCTURE MAP ARE ESSENTIAL TO IMPLEMENTING THE ILLICIT DISCHARGES ID. AND ELIMINATION PLAN.	MS-4 INFRASTRUCTURE MAPS UPDATED EVERY 6 MONTH.

Part I. 2016 Stormwater Management Program (SWMP) Summary (continued)
 Construction Site Stormwater Runoff Control (See Part 2.4.5 for detailed information of required BMPs):

BMP Description or BMP ID (e.g. MCM-1)	Program Description (Describe the program and how it will help control stormwater runoff at construction sites, e.g. new regulations, construction practices, inspection protocols, etc.)	Measurable Goal (What is the end result of this program? What indicator will determine the goal has been met? (e.g., adoption of bylaws/ordinances, amount of inspections performed and sites actively regulated, etc.)
<p>EDUCATIONAL TALKS</p> <p>PROVIDE CONSTRUCTION AND POST-CONSTRUCTION BMP'S TRAINING TO MUNICIPAL PUBLIC WORKS EMPLOYEES, CONTRACTOR, AND DEVELOPERS.</p>	<p>EMPLOYEE EDUCATION IN THE CASE OF APPROVAL OF A STORM SYSTEM BY THE USE OF RESTRAINT SYSTEM ALL ADDED TO THE SYSTEM THAT COULD CONTAMINATION ABOVE</p> <p>PROVIDING PRACTICAL TRAINING ON CONSTRUCTION AND POST-CONSTRUCTION BMP'S TO MUNICIPAL EMPLOYEES, CONTRACTOR, AND DEVELOPERS WILL INCREASE KNOWLEDGE ON THOSE BEST PRACTICES AND CONSEQUENTLY, WILL INCREASE COMPLIANCE WITH TE REGULATION AND REDUCE STORMWATER POLLUTION.</p>	<p>IT HAS BEEN EFFECTIVE SINCE THE STAFF IS SHIFTING, AND TRAINING TO AVOID CONTAMINATION OF WATER BODIES.</p> <p>NUMBER OF INSPECTION STAFF AND CONTRACTOR STAFF AND CONTRACTORS TRAINED ON STORWATER POLLUTION PREVENTION BMP'S</p>
<p>IMPLEMENT EROSION AND SEDIMENT CONTROL ORDINANCE</p>	<p>PROPER ORDINANCE ENFORCEMENT IS KEY TO ACHIEVING COMPLIANCE OF THE ORDINANCE AND OF THE GENERAL PERMIT.</p>	<p>NUMBER OF CONSTRUCTION PROJECTS INSPECTED THAT ARE IN COMPLIANCE WITH THE MS-4 ORDINANCE REQUIREMENT.</p>
<p>REVISE AND MODIFY BID DOCUMENTS AND CONTRACT</p>	<p>INCLUDE MS-4 GENERAL PERMIT AND MUNICIPAL MS-4 ORDINANCE COMPLIANCE REQUIREMENT IN BID DOCUMENTS AND CONTRACTS.</p>	<p>REVISION AND MODIFICATION OF BID SPECIFICATIONS, DOCUMENTS,AND CONTRACT TEMPLATES</p>
<p>DISTRIBUTE CONSTRUCTION AND POST-CONSTRUCTION EDUCATION MATERIAL</p>	<p>CREATE A POSTER WITH STORM POLLUTION PREVENTION BMPs WILL BE PROVIDED TO CONSTRUCTION PROJECT MANAGER DURING INSPECTIONS.</p>	<p>NUMBER OF CONSTRUCTION PROJECT SITE WHERE THE POSTER ARE DISPLAYED</p>
<p>CONDUCT CONSTRUCTION PROJECT MS-4 COMPLIANCE INSPECTONS</p>	<p>CONDUCTING REGULAR CONSTRUCTION PROJECT INSPECTIONS AND PROVIDING MS-4 PERMIT COMPLIANCE EDUCATIONAL MATERIAL WHEN NEEDED WILL HELP IDENTIFY MUNICIPAL ORDINANCE VIOLATION AND WILL INCREASE COMPLIANCE WITH MS-4 GENERAL PERMIT REQUIREMENTS.</p>	<p>NUMBER OF INSPECTION CONDUCTED AT EACH PRIVATE AND PUBLIC PROJECT.</p>
<p>DEVELOP A CONSTRUCTION STORMWATER POLLUTION PREVENTION INTERACTIVE SECTION IN THE MUNICIPAL WEB PAGE</p>	<p>POSTING EDUCATIONAL AND COMPLIANCE INFORMATION ON THE MUNICIPAL WEB PAGE.</p>	<p>NUMBER OF NONCOMPLIANCE NOTIFICATION RECEIVED THROUGH THE MUNICIPAL WEB PAGE</p>

Part I. 2016 Stormwater Management Program (SWMP) Summary (continued)
 Post-Construction Stormwater Management in New Development and Redevelopment (See Part 2.4.6 for detailed information of required BMPs):

<p>BMP Description or BMP ID (e.g. MCM-1)</p>	<p>Program Description (Describe the program and how it will control stormwater runoff from properties after they are developed, e.g. new regulations, practices, or resources for contractors to use Low Impact Development (LID), etc.)</p>	<p>Measurable Goal (What is the end result of this program? What indicator will determine the goal has been met? (e.g., adoption of bylaws/ordinances, amount of implemented practices, development of capacity building resources, etc.)</p>
<p>GENERAL ORIENTATION PROVIDE POST-CONSTRUCTION BMPs TRAINING TO MUNICIPAL PUBLIC WORKS EMPLOYEES, CONTRACTOR, AND DEVELOPMENT</p>	<p>ENDORSEMENT ISSUED AT THE TIME OF CONSTRUCTION GUIDES TO THE CONTRACTOR WILL, MANAGER APPLICABILITY OF N.P.D.E.S., FULL IN THE WORK [EJ. ENDORSEMENT DRAFT COPY ISSUED] PROVIDING A PRACTICAL TRAINING ON CONSTRUCTION AND POST-CONSTRUCTION BMPs TO MUNICIPAL EMPLOYEES, CONTRACTORS, AND DEVELOPERS WILL INCREASE KNOWLEDGE OF THOSE PRACTICES AND, CONSEQUENTLY, WILL INCREASE COMPLIANCE WITH THE REGULATIONS AND REDUCE STORM POLLUTION.</p>	<p>POSITIVE RESULTS HAVE BEEN ONE HAS NOT COMPLETELY BUT IS ESTIMATED AT 60% OF HUMANS OR MANAGER TO BE DRIVEN. [ORIENTATION IS CONTINUING WITH THE ENDORSEMENT YOU APPLY AS]</p>
<p>DEVELOP AN INVENTORY OF EXISTING POST-CONSTRUCTION CONTROL MEASURE FACILITIES</p>	<p>POST CONSTRUCTION MEASURE FOR LONG-TERM MAINTENANCE ARE REQUIRED TO ENSURE THE OPERATION OF MUNICIPAL FACILITIES IN THE LONG TERM.</p>	<p>NUMBER OF INSPECTION STAFF AND CONTRACTOR TRAINED ON STORMWATER POLLUTION PREVENTION BMPs</p>
<p>DEVELOPMENT A MUNICIPAL FACILITY POST-CONSTRUCTION PLAN</p>	<p>THE MUNICIPAL OF CEIBA WILL BEGIN BY INCREASING THE LEVEL OF KNOWLEDGE OF THE DIFFERENT POST-CONSTRUCTION PRACTICE BY EVALUATING THE BEST OPTION TO BE IMPLEMENT IN MUNICIPAL FACILITIES.</p>	<p>POST-CONSTRUCTION MEASURE INVENTORY SUBMITTAL</p>
<p>IMPLEMENT THE MUNICIPAL FACILITIES POST-CONSTRUCTION PLAN</p>	<p>IMPLEMENTING THE POST-CONSTRUCTION BMPs IN MUNICIPAL FACILITIES WILL HAVE A DIRECT IMPACT IN REDUCING RUNOFF AND STORMWATER POLLUTION POTENTIAL. IN ADDITION, LOCAL EXPERTISE WILL BE DEVELOPMENT WITHIN MUNICIPAL EMPLOYEES THAT WILL FACILITATE THE IMPLEMENTATION OF POST-CONSTRUCTION PLAN.</p>	<p>MUNICIPAL FACILITIES POST-CONSTRUCTION PLAN APPROVAL. POST-CONSTRUCTION EDUCATIONAL MATERIAL DEVELOPMENT. NUMBER OF POST-CONSTRUCTION BMPs IMPLEMENTED AT MUNICIPAL FACILITIES. NUMBER OF MUNICIPAL FACILITIES IMPACTED</p>

Part I. 2016 Stormwater Management Program (SWMP) Summary (continued)
 Good Housekeeping and Pollution Prevention in Municipal Operations (See Part 2.4.7 for detailed information of
 required BMPs):

<p>BMP Description or BMP ID (e.g. MCM-1)</p>	<p>Program Description (Describe the program and how it will mitigate stormwater runoff at municipal properties ort through municipal activities, e.g. installation of structural stormwater controls on the municipal properties, new practices to reduce pollutant exposure to rain events, runoff management, trainings, etc.)</p>	<p>Measurable Goal (What is the end result of this program? What indicator will determine the goal has been met? (e.g., structural BMPs installed, SOPs developed and implemented, etc.)</p>
<p>ALTERNATE EDUCATIONAL PROGRAM</p>	<p>EDUCATION PROGRAM INVOLVING THE INDIVIDUAL DEVELOPMENT OF EACH COMMUNITY ACCORDING TO NEED OF THEM. EMPLOYEE TRAINING WORKS FOR MAINTENANCE STORMWATER SYSTEM.</p>	<p>THE GOAL IS TO MAINTAIN CONTINUOUS EDUCATION EMPLOYEES AND GRADUAL WAY TO THE COMMUNITY ON DIFFERENT ALTERNATIVES ON CONTINUING VIABLE SYSTEM MAINTENANCE COLLECTED WASTEWATER STORMWATER SYSTEM.</p>
<p>UPDATE THE MUNICIPAL FACILITIES LIST</p>	<p>THE FACILITIES LIST WILL BE UPDATED TO INCLUDE POTENTIAL POLLUTANTS LIKELY ASSOCIATED WITH SPECIFIC MUNICIPAL FACILITIES.</p>	<p>MUNICIPAL FACILITY UPDATE.</p>
<p>DEVELOP AND IMPLEMENT A GREEN CHEMISTRY PROGRAM IN MUNICIPAL</p>	<p>SUBSTITUTING GREEN PRODUCT FOR CHEMICAL IN ACTIVITIES SUCH AS CAR WASHING WILL MINIMIZE THE POTENTIAL OF POLLUTION STORMWATER.</p>	<p>GREEN PRODUCT REPLACING OF SUBSTITUTING FO CHHEMICALS.</p>
<p>DEVELOP POLLUTION PREVENTION FACT SHEET FOR MUNICIPAL ACTIVITIES</p>	<p>POLLUTION PREVENTION FACT SHEET THAT WILL BE AVAILABLE IN MUNICIPAL AREAS OR FACILITIES WITH HIGHT POLLUTION POTENTIAL.</p> <ul style="list-style-type: none"> ▪ LANDSCAPE MAINTENANCES ▪ ROAD AND STREET MAINTENANCES ▪RECYCLABLE MATERIAL HANDLING AND DISPOSAL ▪ AUTOMOBILE MAINTENANCE AND CAR WASH RELATED TASK ▪ SIDEWALK, CITY PLAZA, AND MUNICIPAL PARKING LOT MAINTENANCE ▪ STORMWATER DRAINAGE SYSTEM OPERATION AND MAINTENANCE ▪ WASTE HANDLING AND DISPOSAL 	<p>FACT SHEET DEVELOPMENT AND POSTING IN MUNICIPAL FACILITIES</p>
<p>STREET SWEEPING ON URBANIZED AREAS</p>	<p>EVERY DAY THE TOWN CENTER MAIN STREET AND SIDEWALK ARE SWEPT BY MUNICIPAL EMPLOYEES.</p>	<p>SWEEPING THE TOWN CENTER STREETS AND SIDEWALK EVERY DAY</p>

Part J. Application Certification and Signature

I certify under penalty of law that this document and all attachments were prepared under my direction or supervision in accordance with a system designed to assure that qualified personnel properly gathered and evaluated the information submitted. Based on my inquiry of the person or persons who manage the system, or those persons directly responsible for gathering the information, the information submitted is, to the best of my knowledge and belief, true, accurate, and complete. I am aware that there are significant penalties for submitting false information, including the possibility of fine and imprisonment for knowing violations.

Signature of Mayor/Elected Official: _____

Print Name of Mayor/Elected Official: ANGELO CRUZ RAMOS

Title: ALCALDE MUNICIPIO DE CEIBA

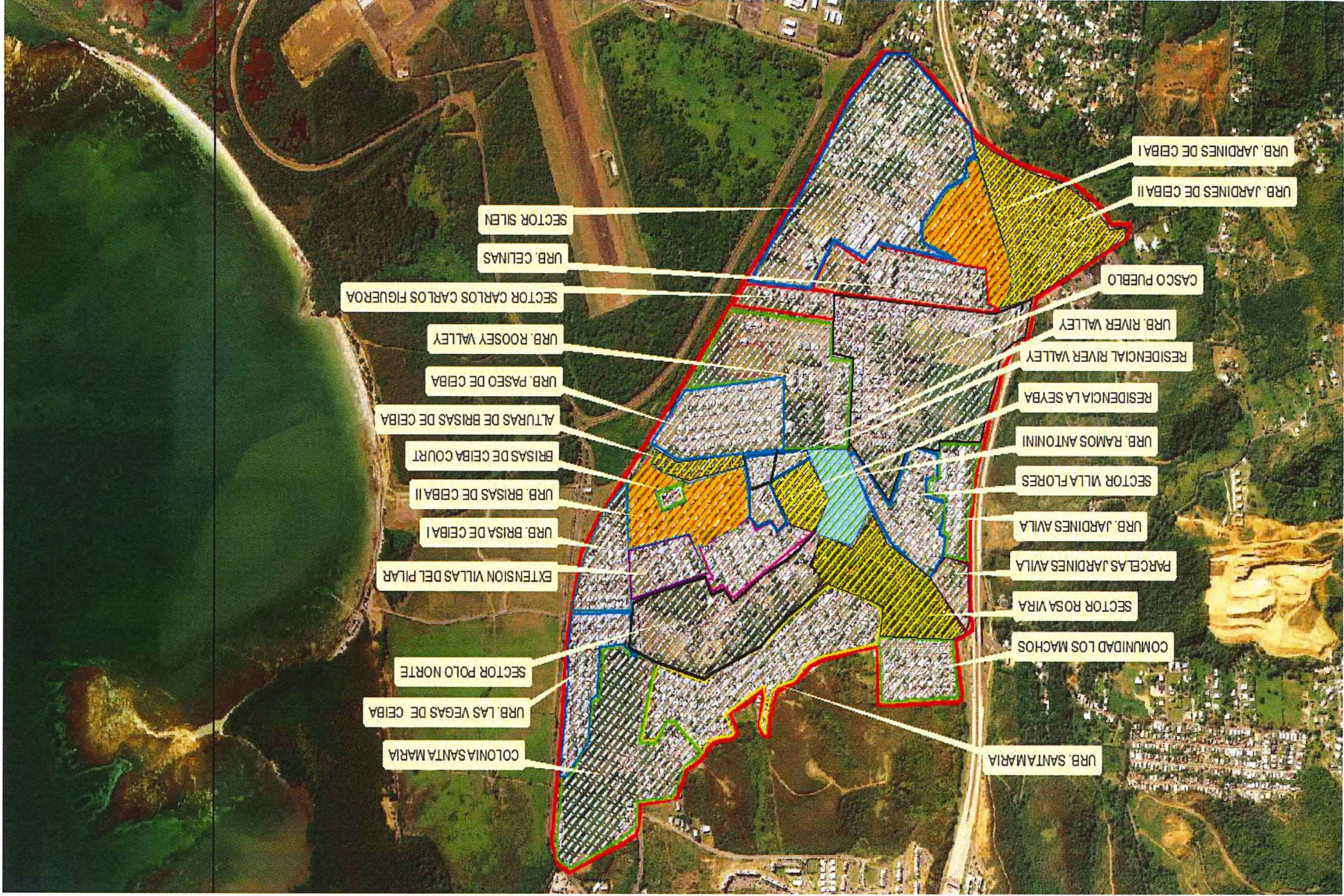
Date: MAY 10, 2017

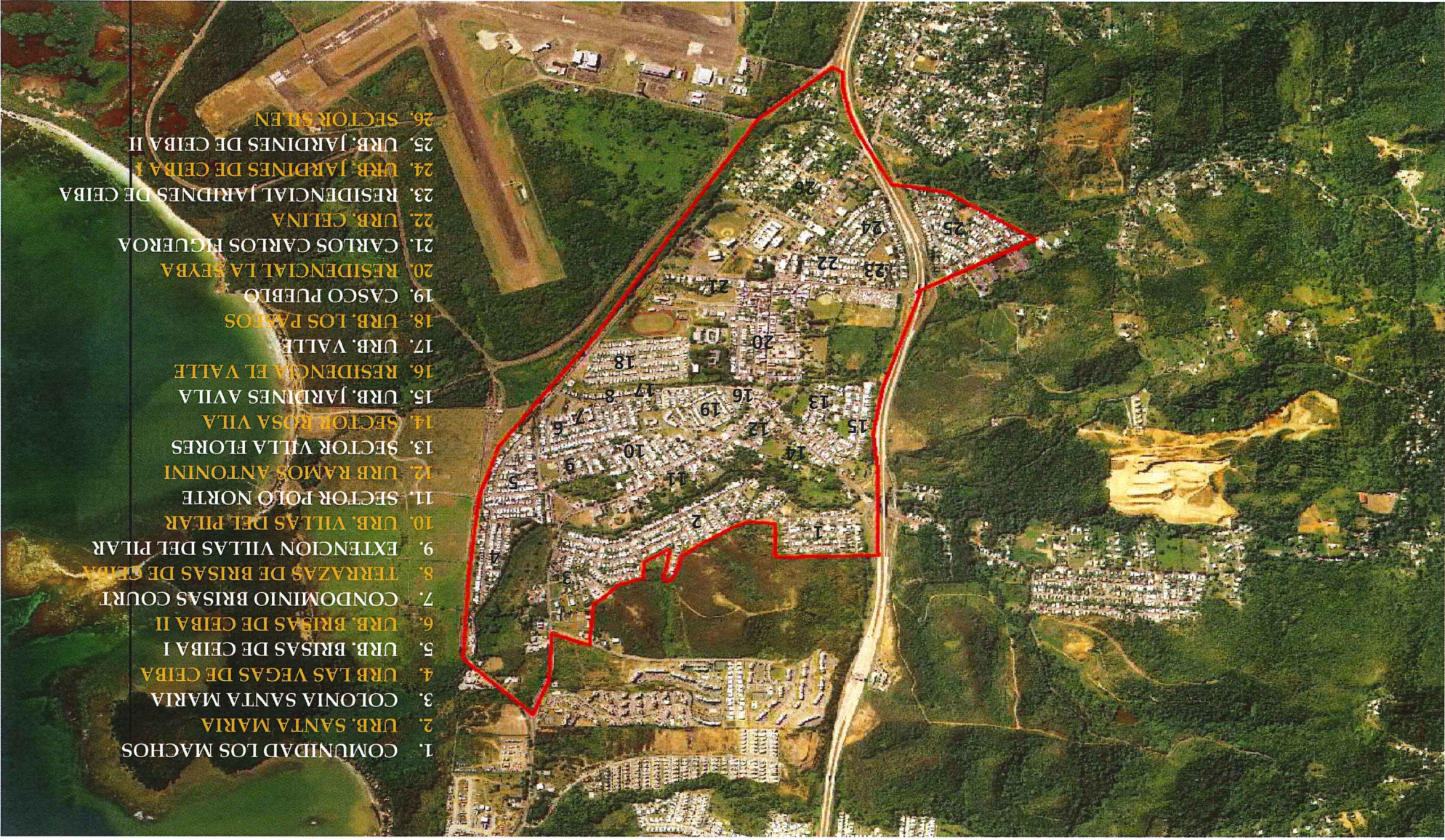
HOJA DE ACCESO VEHICULAR



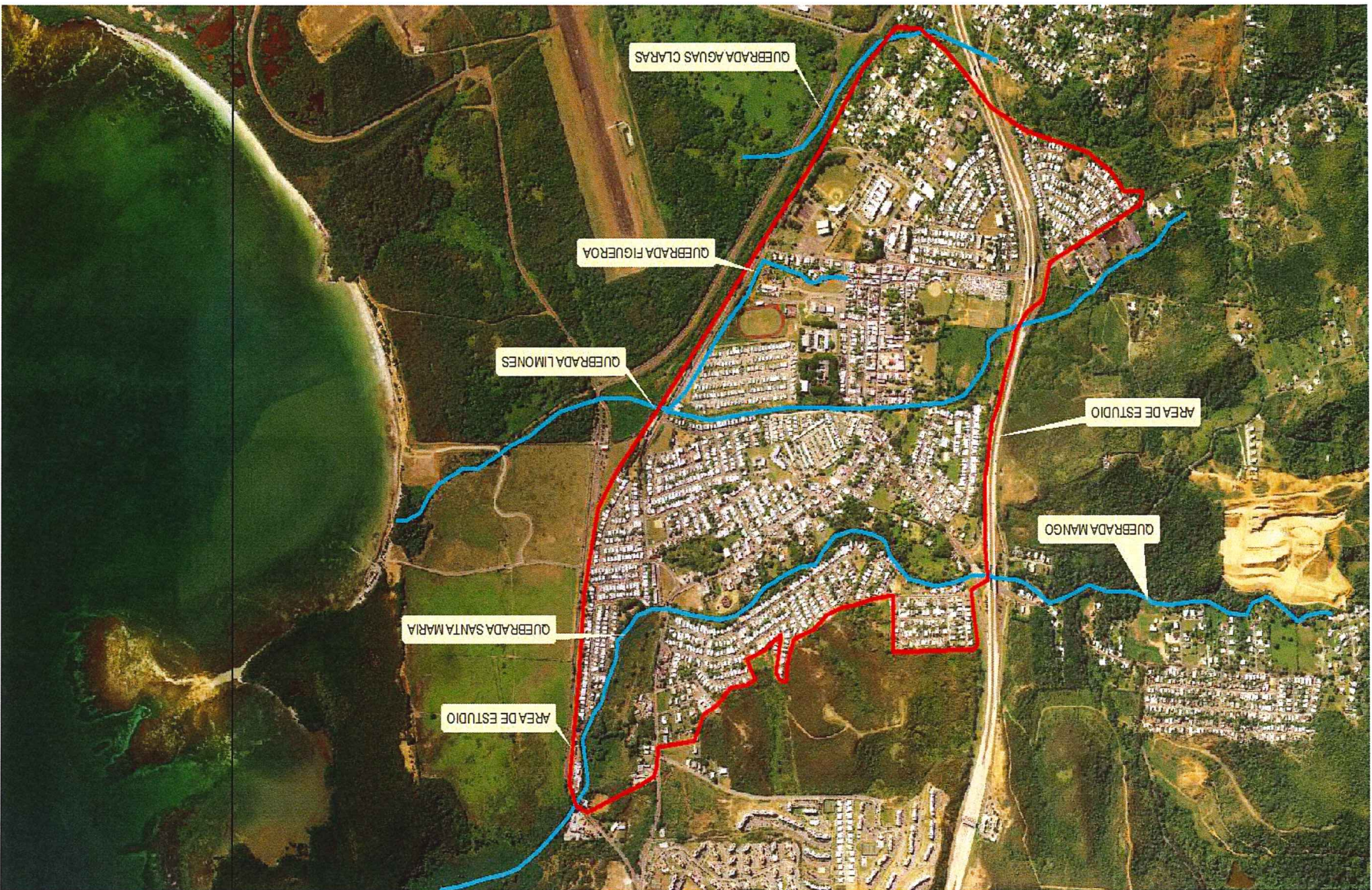


HOJA DE LOCALIZACION DE SECTOR





1. COMUNIDAD LOS MACHOS
2. URB. SANTA MARIA
3. COLONIA SANTA MARIA
4. URB LAS VEGAS DE CEIBA
5. URB. BRISAS DE CEIBA I
6. URB. BRISAS DE CEIBA II
7. CONDOMINIO BRISAS COURT
8. TERRAZAS DE BRISAS DE CEIBA
9. EXTENCION VILLAS DEL PILAR
10. URB. VILLAS DEL PILAR
11. SECTOR POLO NORTE
12. URB RAMOS ANTONINI
13. SECTOR VILLA FLORES
14. SECTOR ROSA VILA
15. URB. JARDINES AVILA
16. RESIDENCIA EL VALLE
17. URB. VALLE
18. URB. LOS PASTOS
19. CASCO PUEBLO
20. RESIDENCIAL LA SEYBA
21. CARLOS CARLOS FIGUEROA
22. URB. CELINA
23. RESIDENCIAL JARDINES DE CEIBA
24. URB. JARDINES DE CEIBA I
25. URB. JARDINES DE CEIBA II
26. SECTOR SLEN



GOBIERNO MUNICIPAL DE CEIBA
CUERPOS DE AGUAS EN AREA DE ESTUDIO





ESTADO LIBRE ASOCIADO DE PUERTO RICO
LEGISLATURA MUNICIPAL
CEIBA, PUERTO RICO

REGISTRO DE RADICACIÓN DE PROYECTOS
AÑO FISCAL 2016-2017

YO, MARIA DEL PILAR ABREU GARAY, SECRETARIA DE LA LEGISLATURA MUNICIPAL DE CEIBA, PUERTO RICO, REGISTRO LA RADICACIÓN DEL SIGUIENTE PROYECTO DE ORDENANZA Y/O RESOLUCIÓN PARA LA SESIÓN Ordinaria, EL DIA 17 DE mayo DE 2017. ESTE PROYECTO ES RADICADO POR EL/LA HON. Agusto Cruz Ramos, Alcalde, EL DIA 16 DE mayo DE 2017.

PROYECTO DE: Resolución número 45 SERIE: 2016-2017

TÍTULO Para enmendar la Ordenanza número 1, que
y actualizar el Código de Orden Público del Municipio
de Ceiba

FIRMAN LA PRESENTE:

LEGISLADOR QUE RADICA EL PROYECTO



Maria del Pilar Abreu Garay
MARIA DEL PILAR ABREU GARAY
SECRETARIA LEGISLATURA MUNICIPAL

Fecha de radicación: <u>16/ mayo / 2017</u>
Hora: _____