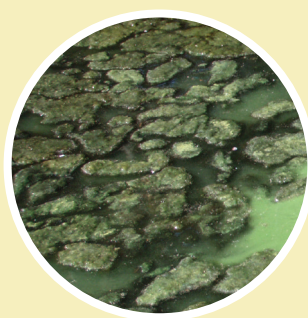


LOOK OUT FOR HARMFUL ALGAL BLOOMS

A **harmful algal bloom (HAB)** is an overgrowth of algae in a water body that could affect water quality and aquatic life. Some HABs produced by bacteria can create toxins that may also harm people, animals, and the local environment.



HOW TO IDENTIFY A HARMFUL ALGAL BLOOM



Algal blooms can make the water appear green, brown, gold, or red. They often produce scum, mats, foam, or paint-like streaks in the water or clumps on the shore. However, only professional water testing can confirm if HABs and toxins are present. State and local governments often test water for bacteria or toxins to protect water quality as part of their water quality standards program.

WHEN IN DOUBT, STAY OUT!

STAY AWAY FROM THE WATER WHEN YOU SUSPECT A HARMFUL ALGAL BLOOM IS PRESENT.



DON'T
Play with scum or mats on the shore



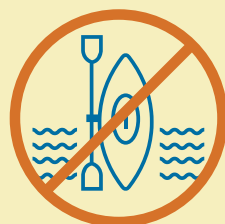
DON'T
Let animals drink water, eat algae, or swim



DON'T
Swim



DON'T
Fish or wade

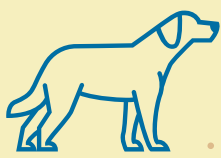


DON'T
Boat or kayak

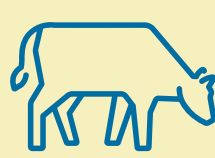
WHO CAN GET SICK FROM A HAB?



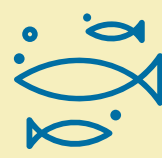
Adults and children



Household pets



Livestock



Fish and shellfish

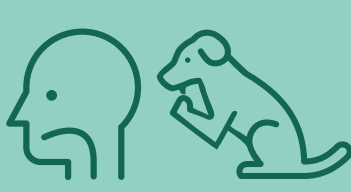
ROUTES & SYMPTOMS OF EXPOSURE TO HABs

SYMPTOMS CAN VARY DEPENDING ON HOW THE PERSON OR ANIMAL WAS EXPOSED, AND WHETHER THE HAB IS IN SALT OR FRESH WATER.

ROUTES OF EXPOSURE



SKIN CONTACT



INGESTION



INHALATION

SYMPTOMS OF EXPOSURE



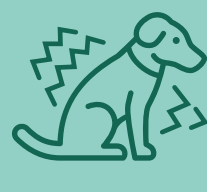
Ear, eye, nose, skin, and throat irritation, and headache



Paralysis, respiratory illness, and seizures



Abdominal pain, diarrhea, liver and kidney damage, and vomiting



Drooling, diarrhea, low energy, not eating, stumbling, tremors, and vomiting

WHAT TO DO IF EXPOSED TO A HAB



See a doctor or vet if symptoms occur



Contact your poison control center for advice

FOR MORE INFORMATION OR TO REPORT POSSIBLE HARMFUL ALGAL BLOOMS:
(XXX) XXX-XXXX | xxxxxxxxxxxxxxxxxx.html

partner logo space

