

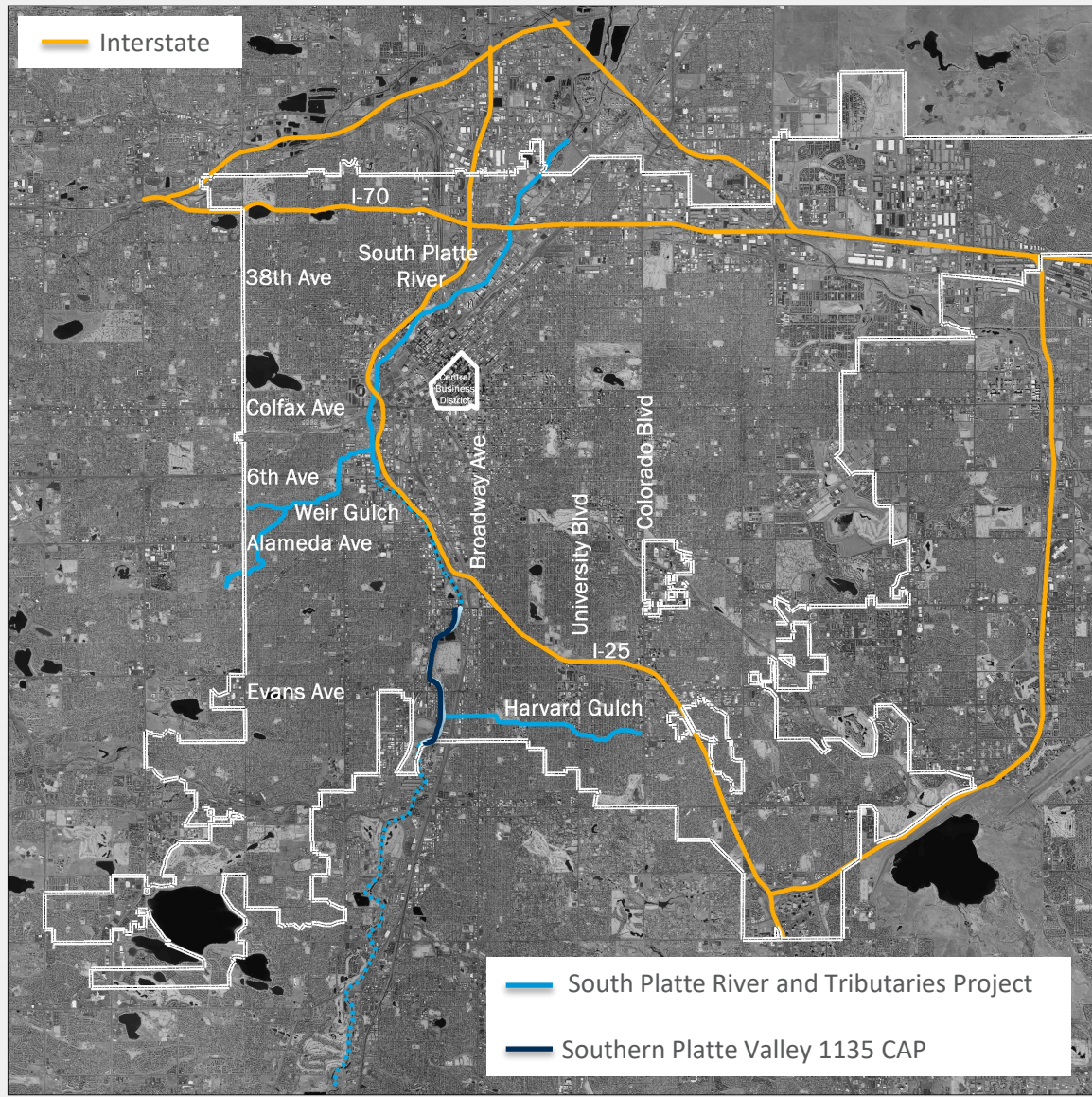
# U.S. Army Corps of Engineers

South Platte River and Tributaries, Adams and Denver Counties,  
Colorado Project

Denver, Colorado Southern Platte Valley Sec. 1135 CAP Project

**Project Briefings | 2021**





# U.S. Army Corps of Engineers

## Denver's Federal Requests



### Denver: A Great Local Partner

- A History of Success
- Ready Local Partners

**South Platte River and Tributaries, Adams and Denver Counties, Colorado Project**

**CONSTRUCTION FUNDING NEED:**  
Federal Cost - \$344,076,000  
Local Cost - \$206,197,000  
Total Cost - \$550,272,000

**Pre-construction Engineering & Design (PED)**  
Total Federal FY2022 PED Request: \$4,000,000

Achieve 'New Start' Designation

**Southern Platte Valley Ecosystem**  
Sec. 1135 CAP Project

**CONSTRUCTION FUNDING NEED:**  
Federal Cost - \$9,033,000  
Local Cost - \$3,364,000  
Total Cost - \$12,397,000

**FY2022 - \$4,000,000**

Increase Continuing Authorities Programs appropriations to meet national needs

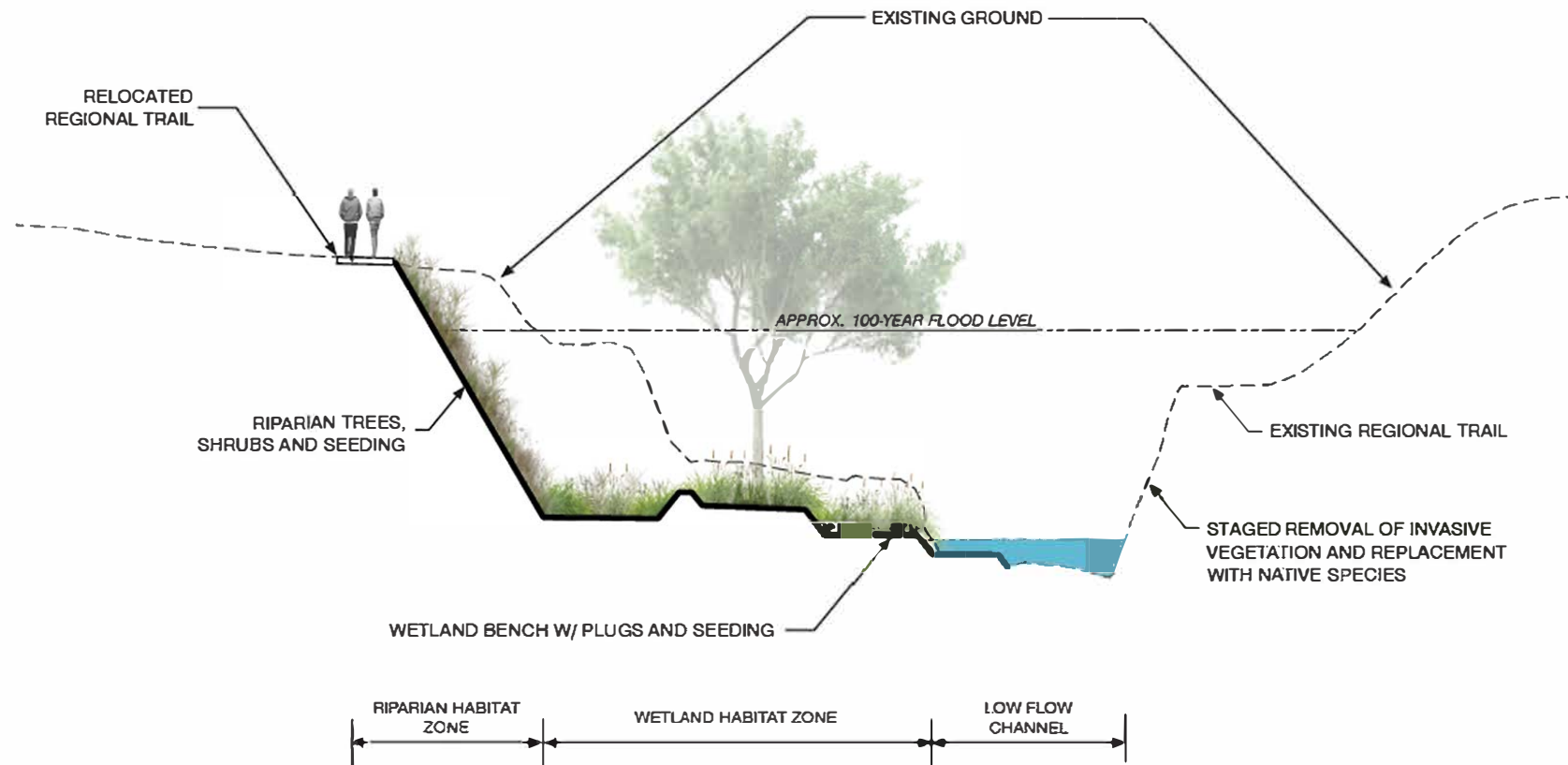


*Los Angeles River Revitalization Master Plan, Los Angeles, CA*



*Menomonee River Valley  
Redevelopment, Milwaukee, WI*

w e n k  
ASSOCIATES



**SOUTH PLATTE RIVER REACH 4 DOWNSTREAM PORTION (AT CUERNAVACA PARK)**  
*TYPICAL SECTION*





The River Mile New Urban District, Denver, CO

w e n k  
ASSOCIATES

# South Platte River and Tributaries, Adams and Denver Counties, Colorado Project

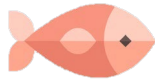
## National Significance

160 acres



Riparian corridor & wetland habitat

100 acres



Wetland habitat

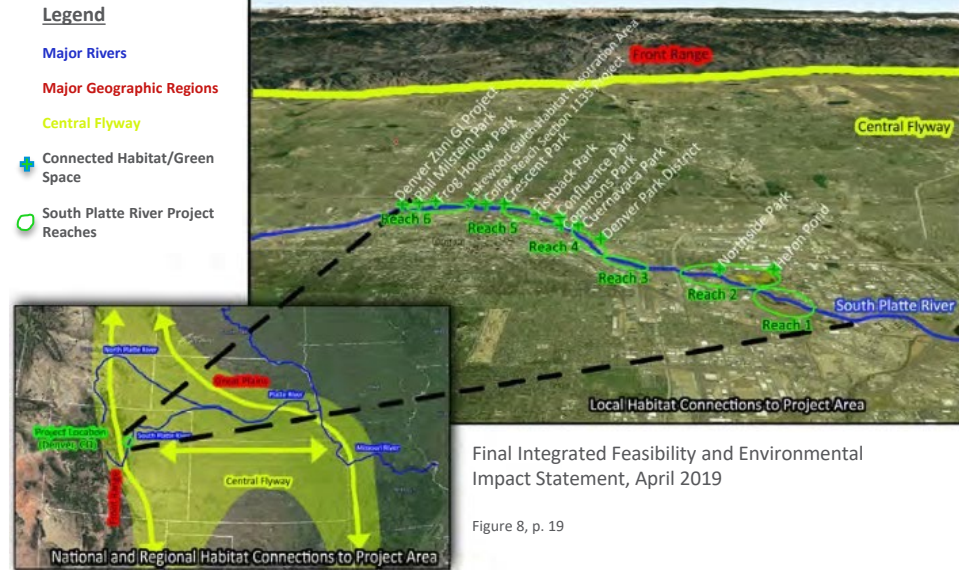
190 acres



Reconnected existing habitat

### Our Project provides:

- A remedy to degradation due to the USACE Tri-Lakes Project;
- An Integral connection in the **Central Flyway**;
- Mitigation in an area that has seen a 66% decline in waterfowl numbers over last 28 years;
- Improved habitat, potentially benefiting:
  - 3 endangered species,
  - 12 state listed bird species, and
  - 15 bird species listed on the national birds of conservation list;
- Benefit to 80% of Colorado wildlife which use wetland and riparian habitats;
- An antidote to the > 50% decrease in wetland acreage since pre-urbanization; and
- An increase in vegetated wetland from 0.7% to 6.5% of land mass within the City boundaries.



### 3 of 15 Birds on National Birds of Conservation Concern List



Mountain Plover  
Photo by Seabamirum/Flickr



Burrowing Owls  
Photo by Tasha Blecha/Bird Conservancy of the Rockies



Semipalmated Sandpiper  
Photo by Brian E. Small/VIREO

Icons by Freepik from www.flaticon.com



## Flood Risk Management

*Prioritizing and Reducing Life Safety Risk*

### Weir Gulch

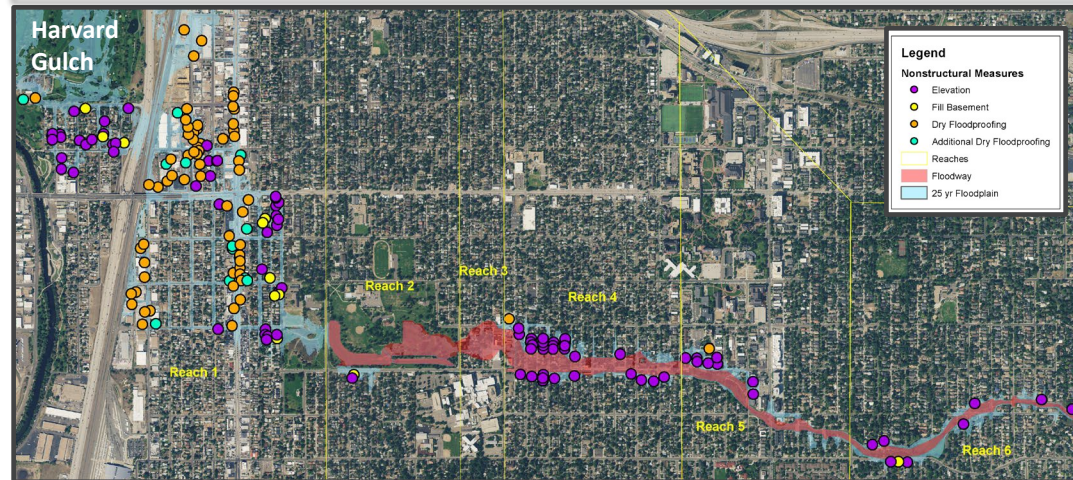
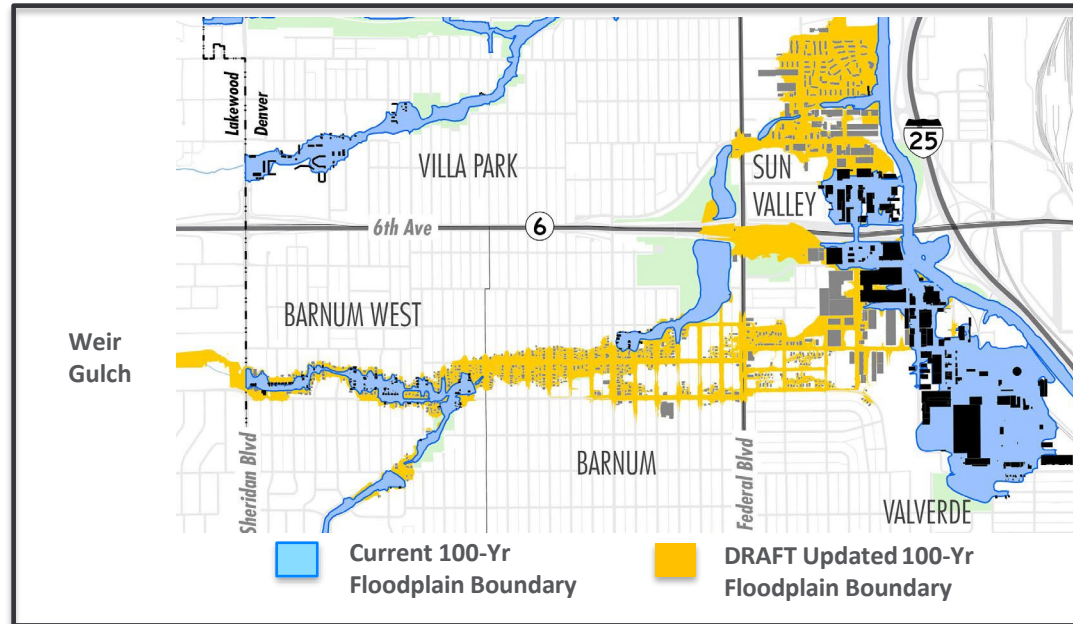
- Vulnerable neighborhood
- 360 structures removed from floodplain designation
- Improves neighborhood connectivity
- Creates a more resilient environment for both stormwater and wildlife
- Reduces risk by 60%

### Harvard Gulch

- Non-structural plan
- 176 structures to be modified:
  - 77 Commercial
  - 99 Residential

### South Platte River

- Incidental flood risk benefit for 100 structures



# A History of Partnership & Delivery

## Recently Completed Projects

### South Platte River Vision Implementation Plan (RVIP):

- 10 unique projects
- \$90M in local investment
- 19 individual funding partners

### Sanderson Gulch Channel Improvements:

- Included HUD and FEMA Grants
- \$20M of total investment
- Removed ~100 structures from floodplain

### Chatfield Reallocation Project

- Provides 20,600 acre-feet of additional storage in total
- 2,100 acre-feet will support South Platte River aquatic & riparian habitat



Chatfield Reallocation Project, Completed in 2020



RVIP Project: Grant Frontier Park, Completed in Spring of 2017 with a budget of \$3.75M



Sanderson Gulch, Completed in Spring of 2020

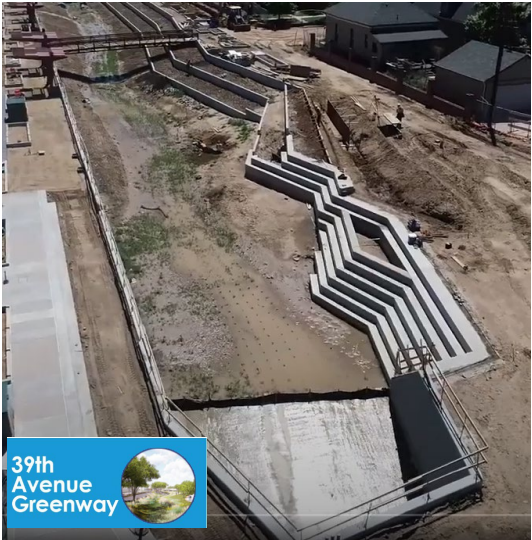
Photo: Valerian

# Platte to Park Hill: Stormwater Systems



### Project Highlights:

- 4 Unique Projects totaling \$298 million
- Daylights a historic channel
- Creates 12 acres of new green space
- Increases natural ecosystems, plant diversity and wildlife habitat
- Connects people and wildlife to the South Platte River
- Includes UV system & trash vault



## Continuing Partnership & Delivery

# Complementary Projects & Local Investment

### A. Carpio-Sanguinette Park

- Phase I Construction: 2021
- Natural refuge restoring ecologies of the place and a connection to the South Platte River.

### B. Globeville Stormwater Systems

- Phase I Levee Construction: 2022/2023
- Phase I 48<sup>th</sup> Ave Outfall Construction: 2022/2023
- Goals include alleviate local flooding, reduce riverine flooding, and improve water quality.

### C. National Western

- Riverfront Construction: 2022/2023
- Collaboration to re-envision the campus with multiple founding partners funded by a ballot measure.
- Includes relocating twin sanitary interceptors and a heat exchange program to reduce the temperature of the South Platte River.

### D. Complementary Developments

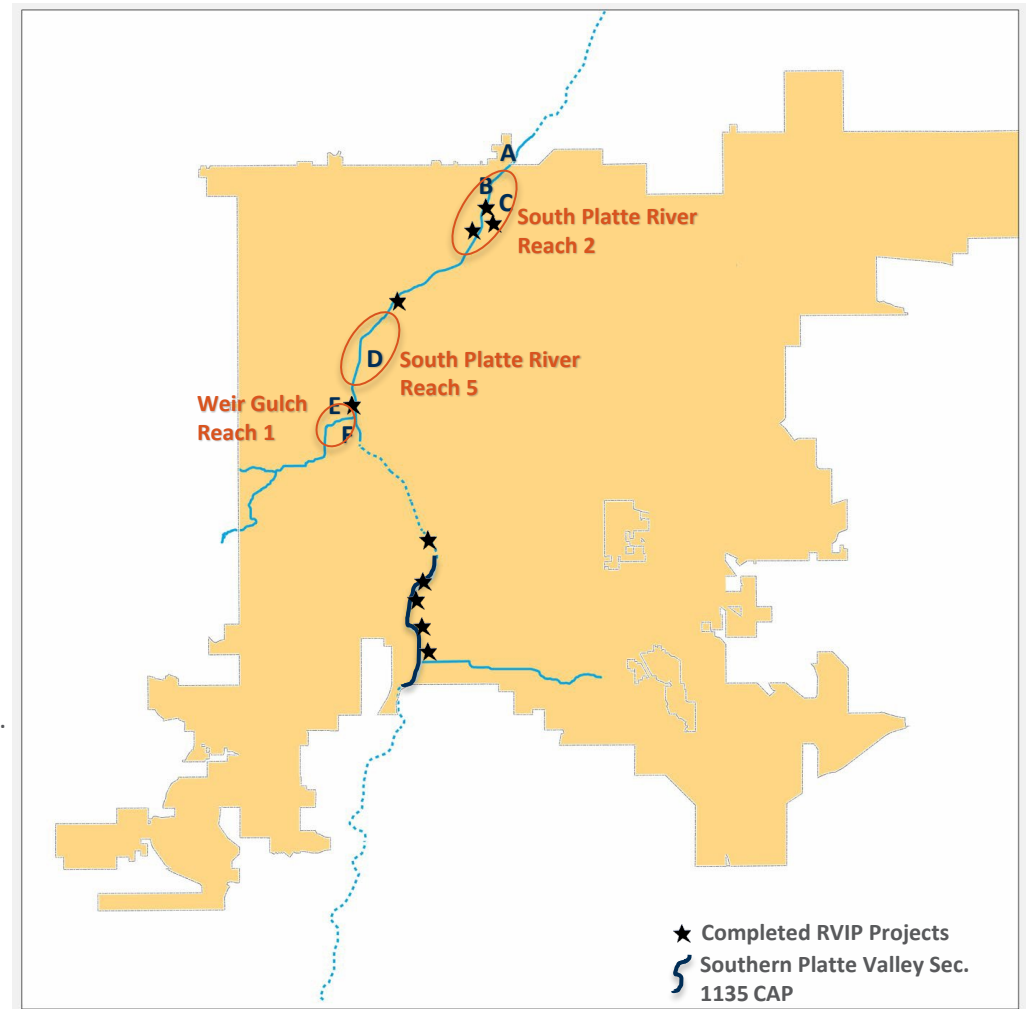
- Construction: On-going
- Local investment has increased complementary development.
- The River Mile is one such development along 1 mile of riverfront.

### E. Sun Valley EcoDistrict

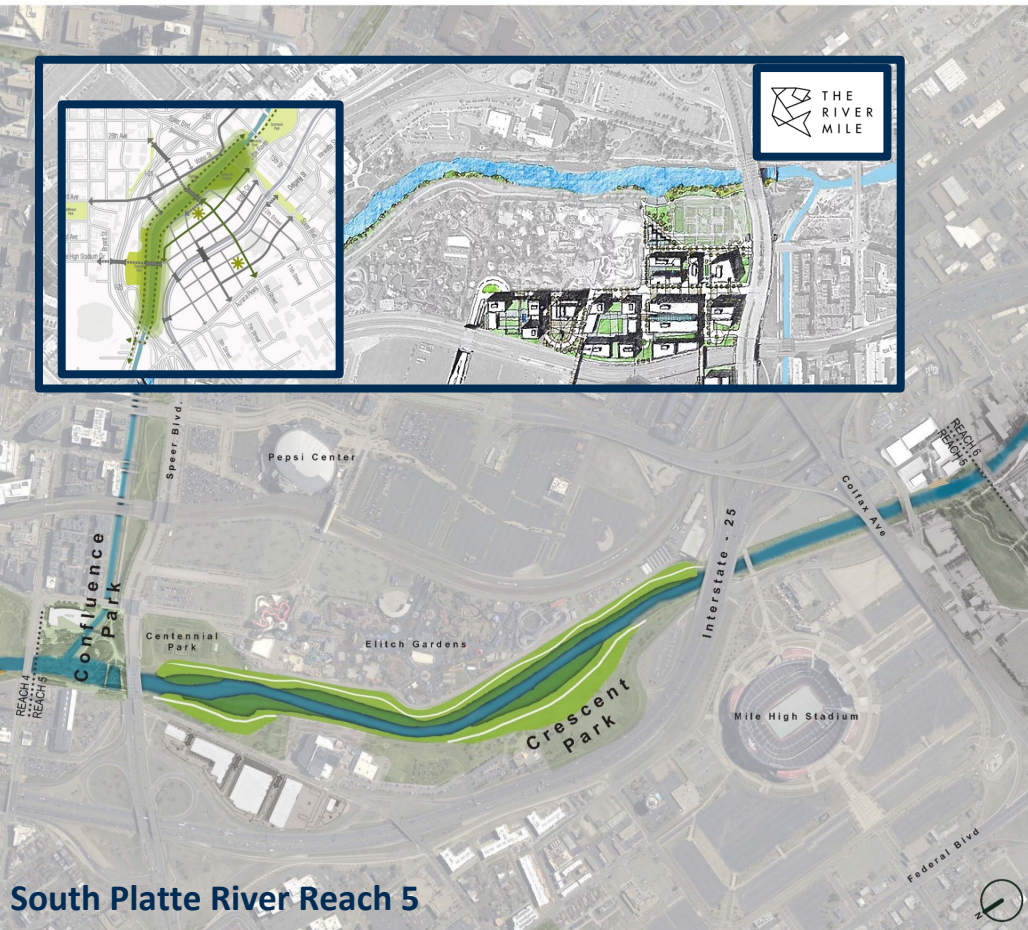
- Lowest income neighborhood in Denver
- Received \$30M HUD grant

### F. Weir Gulch Channel Improvements

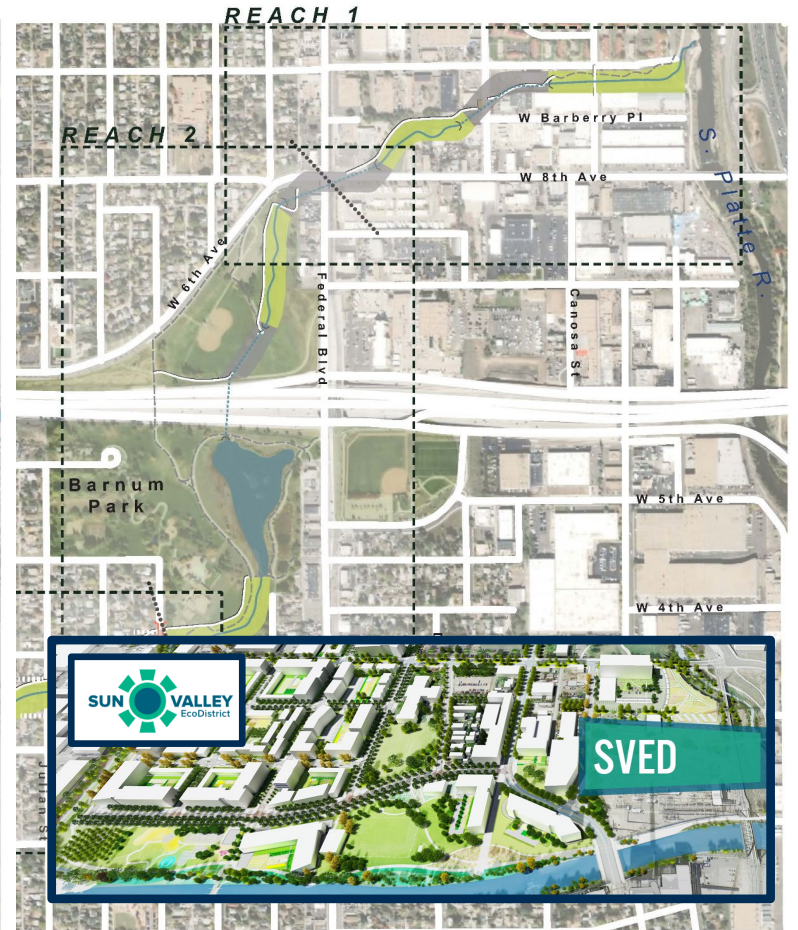
- Currently Under Design
- Includes widening channel and elements of Urban Waterways



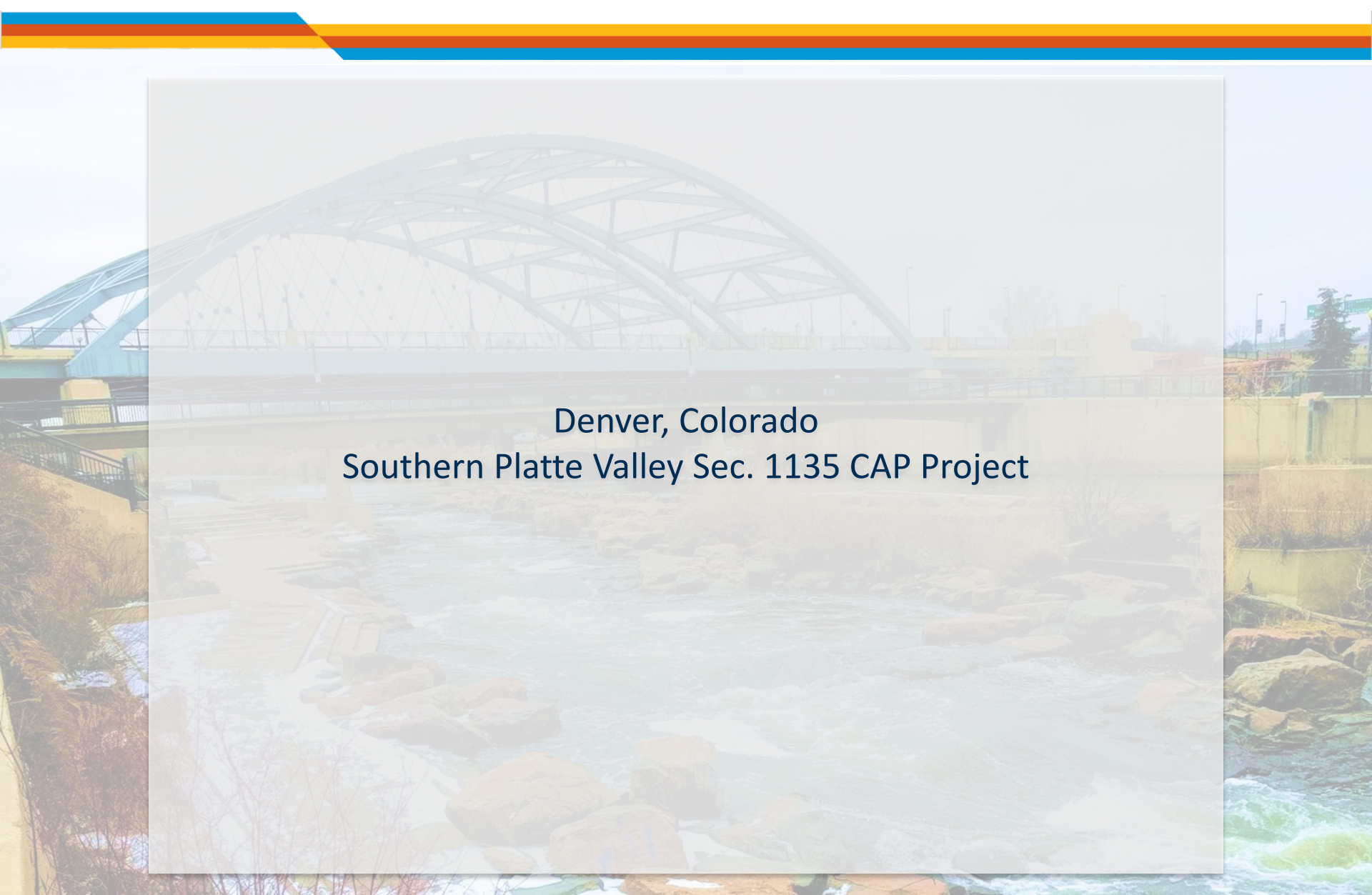
# Local Investment: Reach 5 & Weir Reach 1



South Platte River Reach 5



Weir Gulch Reach 1



Denver, Colorado  
Southern Platte Valley Sec. 1135 CAP Project

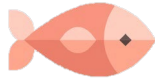
# Project Significance

11 acres



Riparian habitat

22 acres



Aquatic habitat

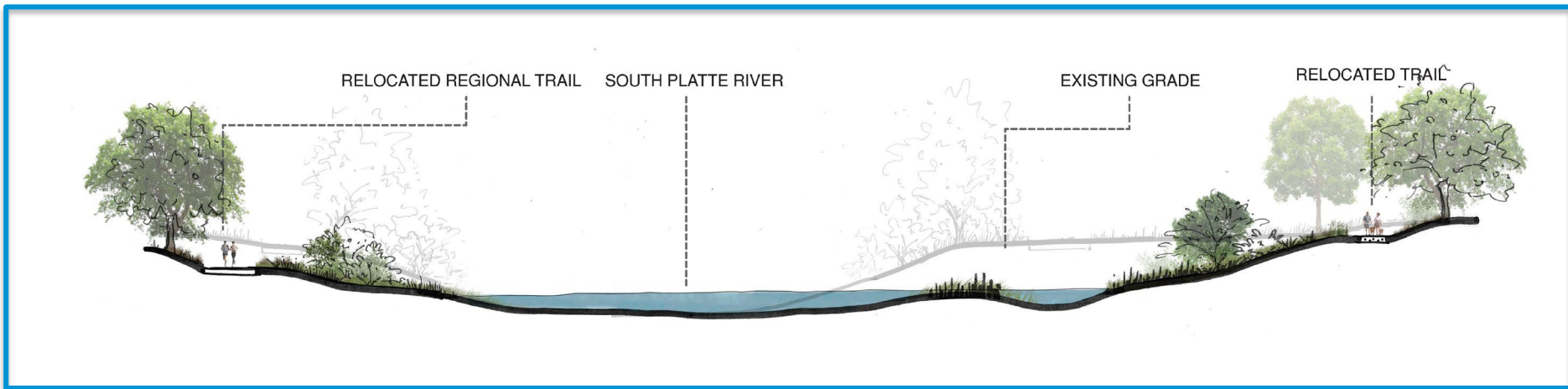
1.5 acres



Palustrine Emergent scrub/shrub wetlands

Project Highlights:

- Connects 3 previous completed River Vision Projects.
- Adjacent to \$20M investment at the outfall of Sanderson Gulch.



Icons by Freepik from [www.flaticon.com](http://www.flaticon.com)

# U.S. Army Corps of Engineers

## Denver's Federal Requests



### Denver: A Great Local Partner

- A History of Success
- Ready Local Partners

*South Platte River and Tributaries, Adams and Denver Counties, Colorado Project*

**CONSTRUCTION FUNDING NEED:**  
 Federal Cost - \$344,076,000  
 Local Cost - \$206,197,000  
 Total Cost - \$550,272,000

**Pre-construction Engineering & Design (PED)**  
**Total Federal FY2022 PED Request: \$4,000,000**

*Achieve 'New Start' Designation*

*Southern Platte Valley Ecosystem Sec. 1135 CAP Project*

**CONSTRUCTION FUNDING NEED:**  
 Federal Cost - \$9,033,000  
 Local Cost - \$3,364,000  
 Total Cost - \$12,397,000

**FY2022 - \$4,000,000**

*Increase Continuing Authorities Programs appropriations to meet national needs*





**DENVER**  
THE MILE HIGH CITY

**MHFD**  
MILE HIGH FLOOD DISTRICT

