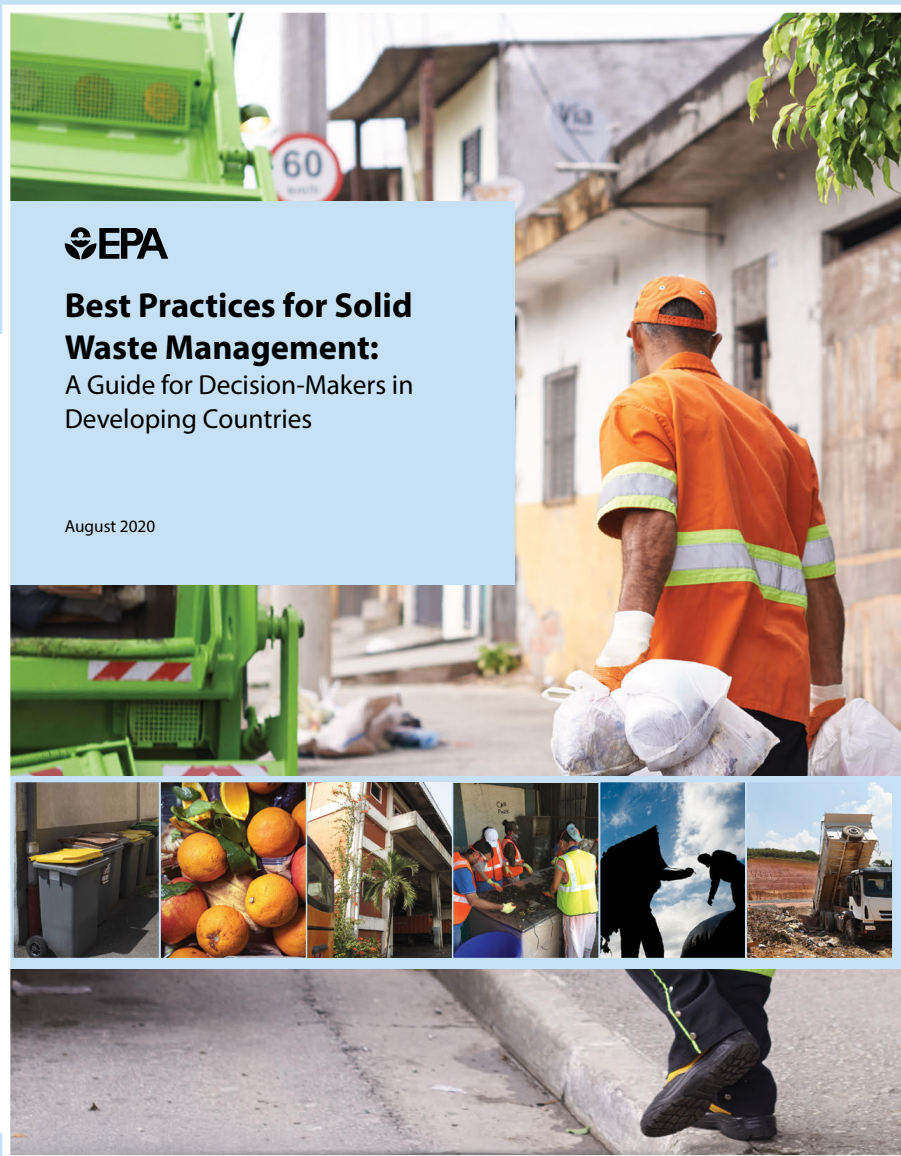


Best Practices for Solid Waste Management: A Guide for Decision-Makers in Developing Countries



Inadequate solid waste management systems present serious risks to human health, the environment, and economies around the world. Cities around the world are working hard to address these challenges. The U.S. Environmental Protection Agency guide highlights best practices and examples across multiple waste topics.

-  Approaches
-  Stakeholder Engagement
-  Planning
-  Economics
-  Characterization
-  Prevention and Minimization
-  Collection and Transportation
-  Organics
-  Recycling
-  Dumpsite Management
-  Sanitary Landfills
-  Energy Recovery



The guide is designed for decision-makers and policymakers involved in solid waste management, but is also useful to non-governmental organizations, the private sector, and other stakeholders.



Facilitates easy navigation between topics

Key resource boxes identify useful guidance materials, tools, and studies

Best practices highlight solid waste management options and benefits



Case studies and examples of projects or activities from cities across the world



Questions for decision-makers to consider when evaluating options for improving solid waste management



Download EPA's **Best Practices for Solid Waste Management** guide