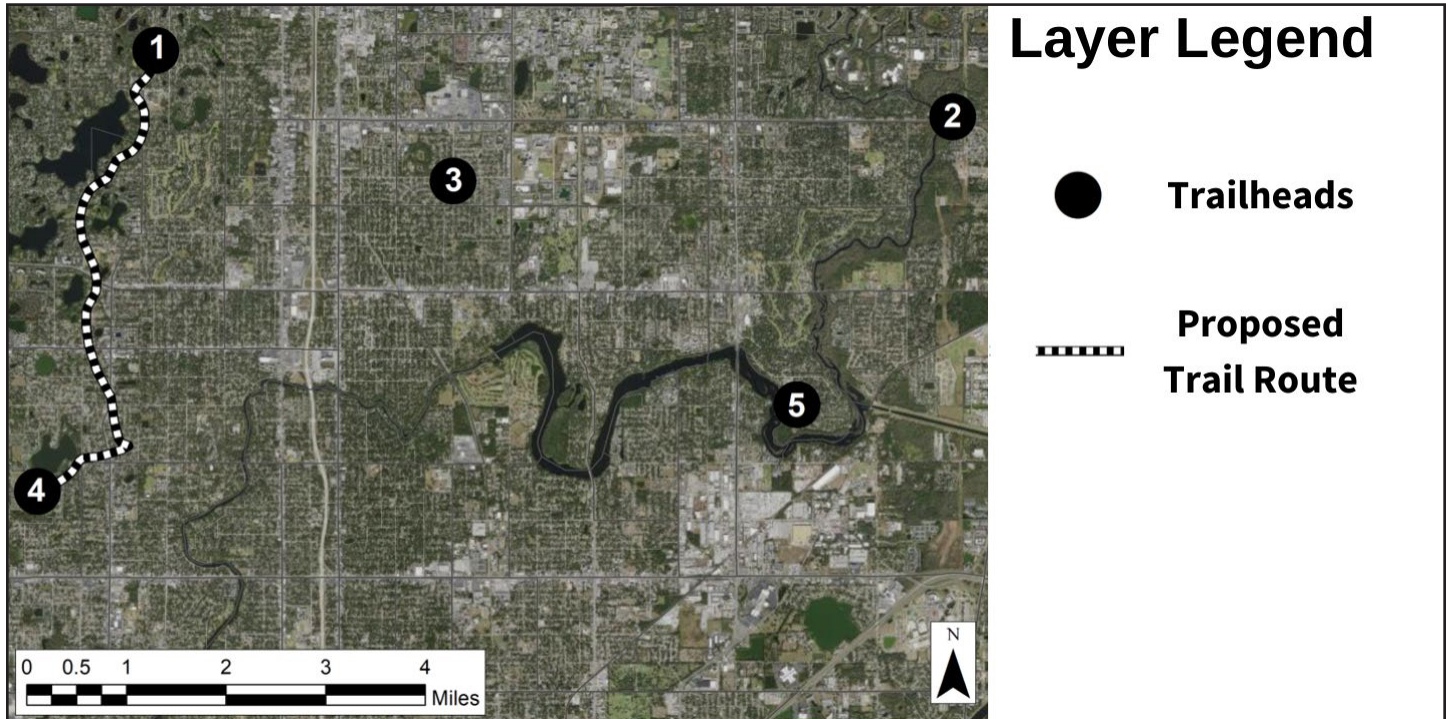


Student Map Set

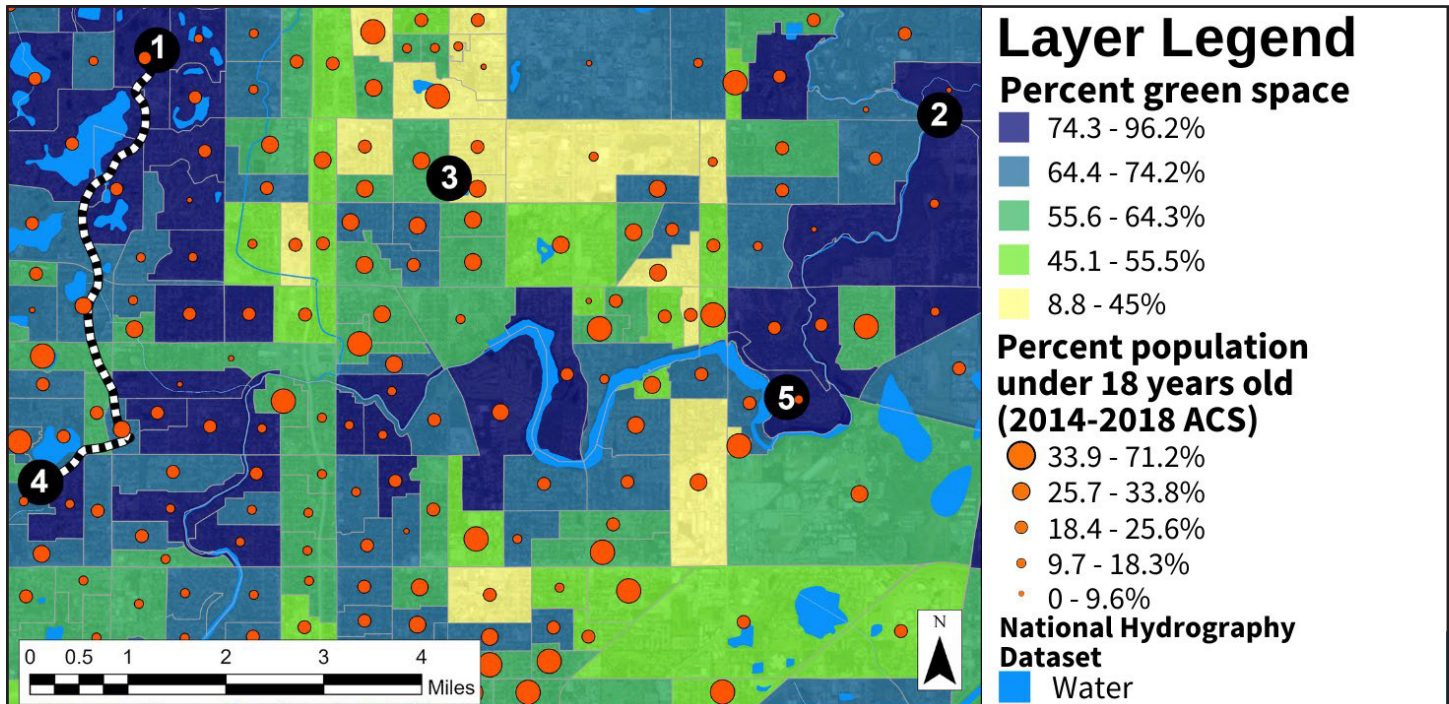
Note: There may be differences between this PDF map set and the maps in the EnviroAtlas online Featured Collection, which may have more recently updated data.

Figure 1. Proposed trail network area with numbered trail heads



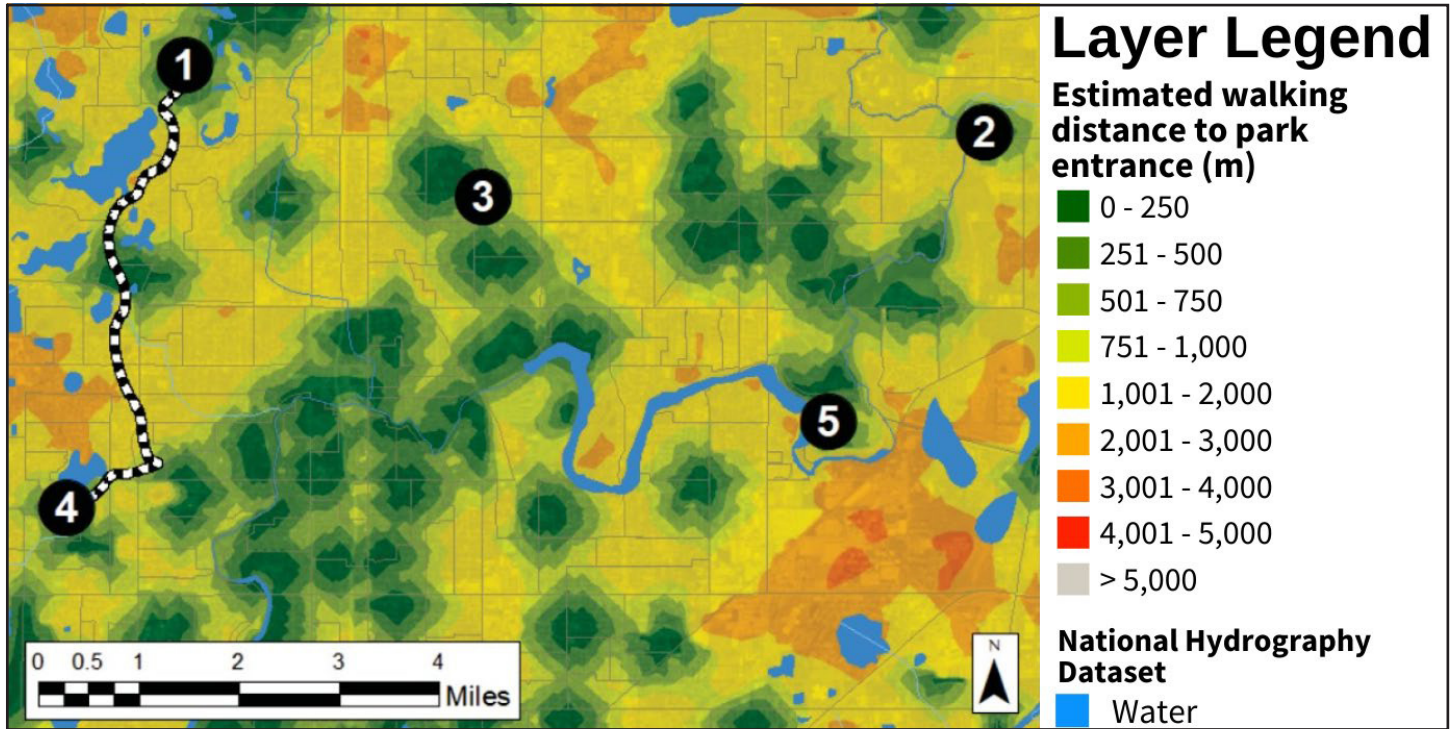
This map shows the case study area, potential trailheads from which to start the greenway, and the pilot route from trailheads 1 to 4 proposed by the Board of County Commissioners.

Figure 2. Percent population under 18 years old, overlaid over percent green space



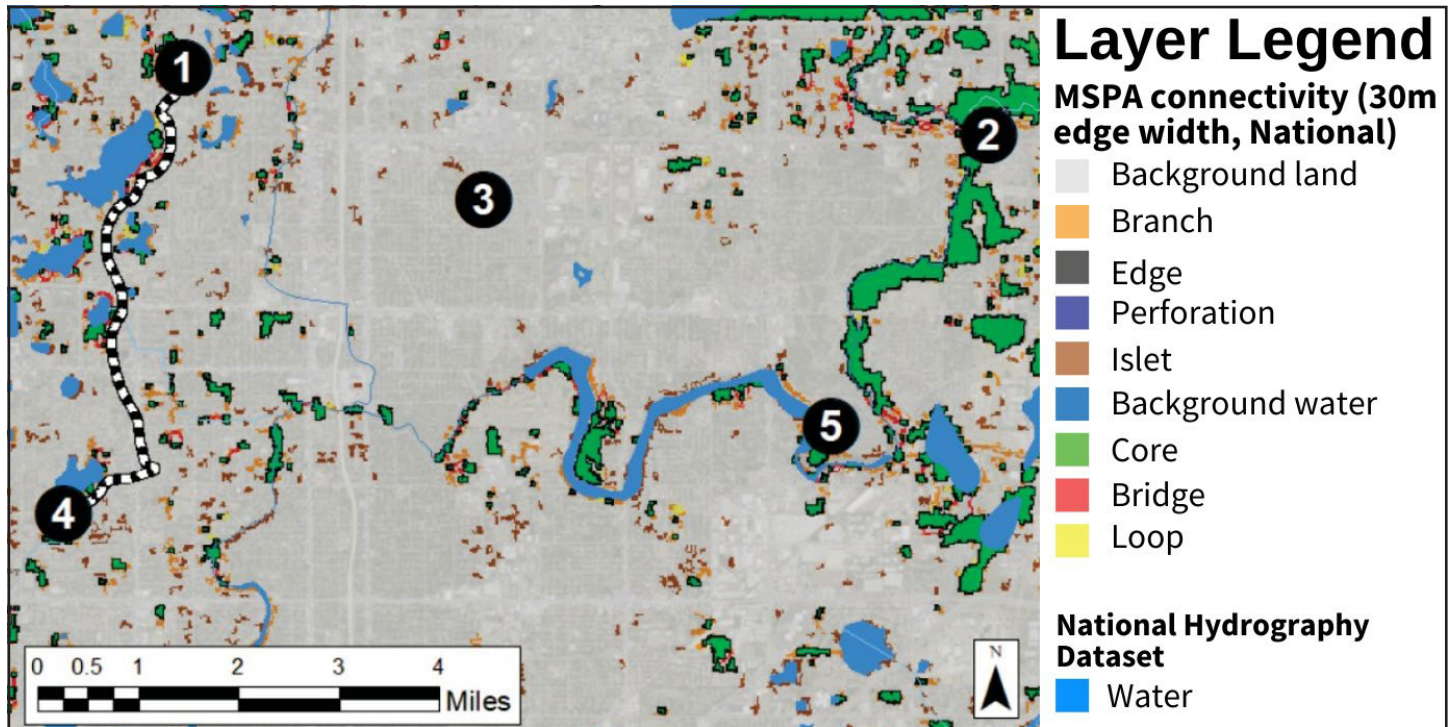
This map shows the percent of the greenway area population that is under 18 years old, on top of a map showing percent green space.

Figure 3. Estimated walking distance to a park entrance



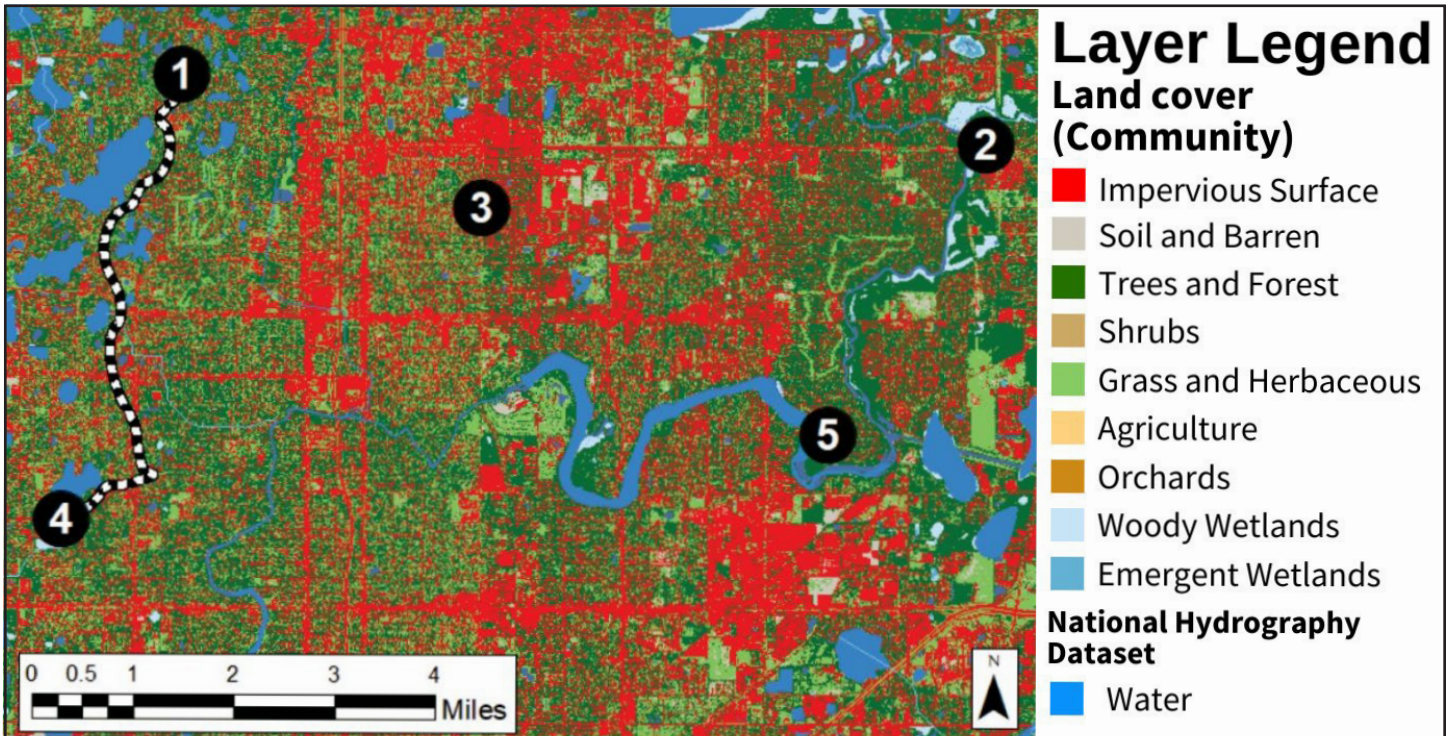
This map shows the estimated walking distance (in meters) via roads to a park entrance in the proposed trail network area.

Figure 4. Natural land cover connectivity



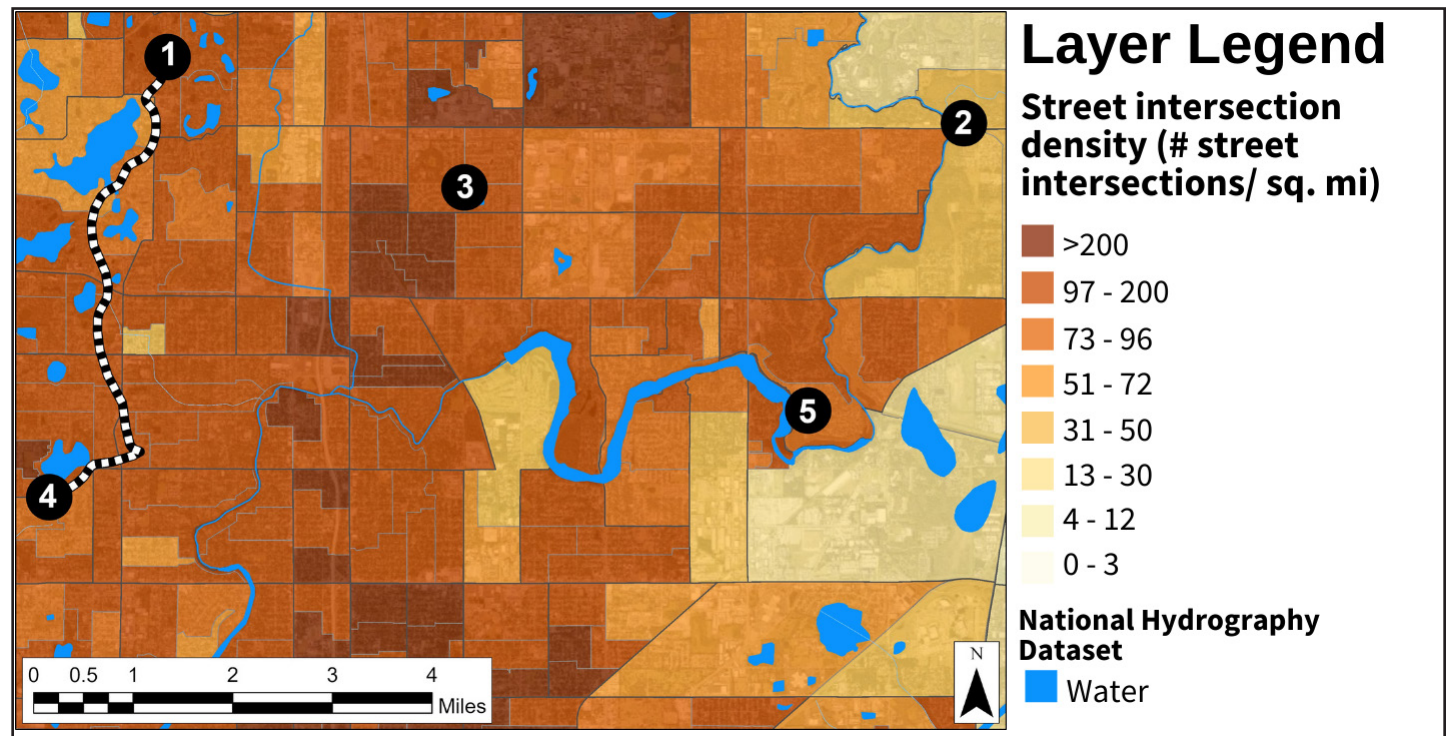
This map shows the connectivity of natural land cover types. This map can be used to identify areas that could be targeted for conservation or restoration efforts. In this map, the green “core” areas are patches of natural land cover.

Figure 5. Land cover classification



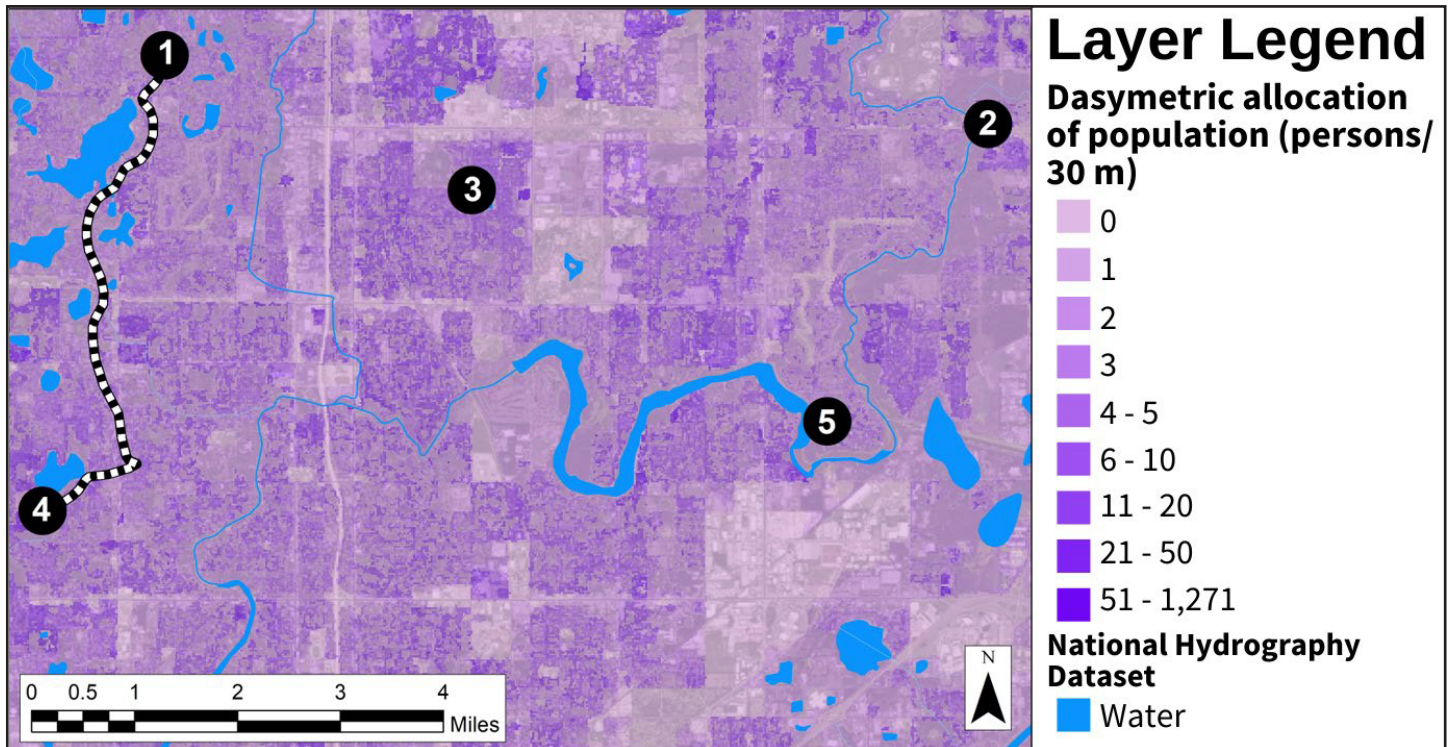
This map shows the proposed greenway area with the landscape classified into 10 land cover types.

Figure 6. Street intersection density



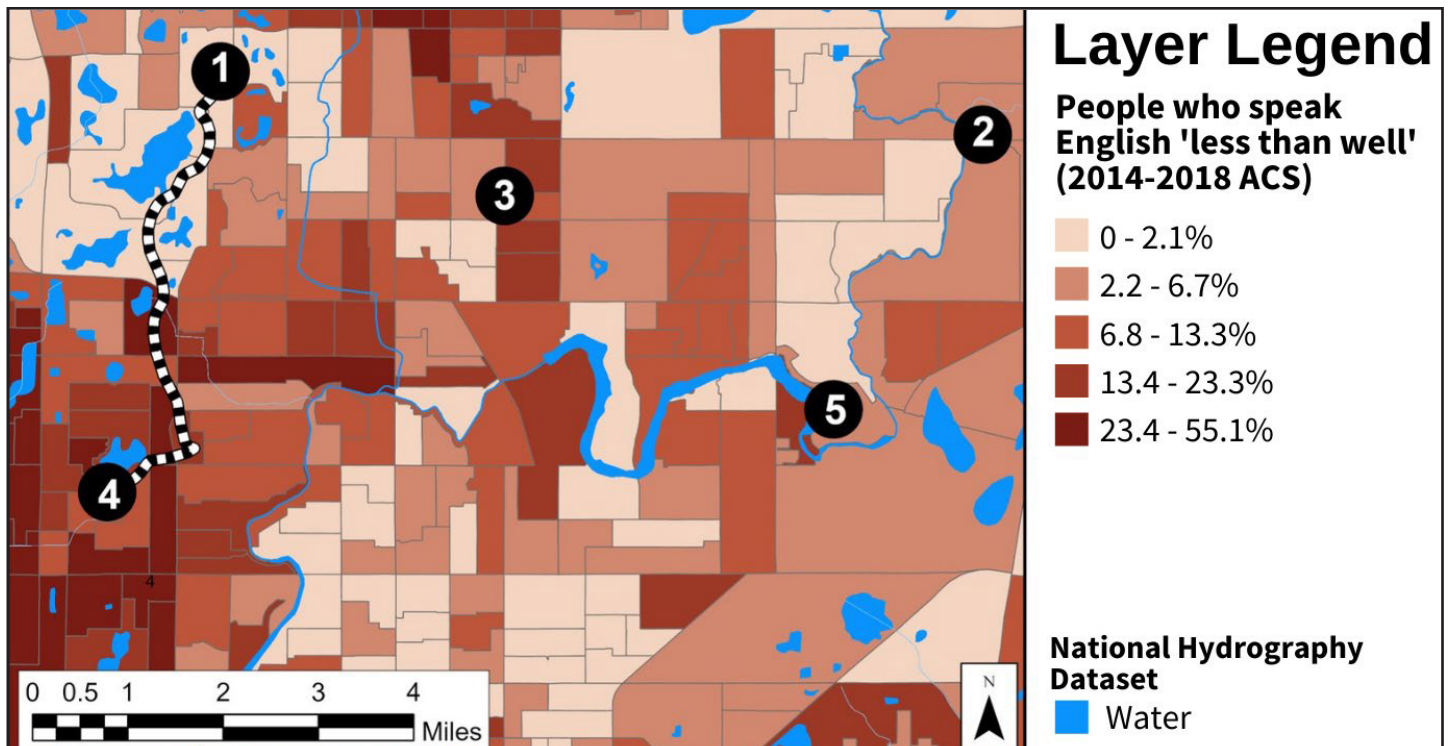
This map shows the intersection density by census block group in the proposed greenway area. Intersection density is the number of intersections per square mile and is a factor in the overall walkability of an area.

Figure 7. Dasymetric allocation of population



This map shows the Dasymetric allocation of population in the proposed greenway area. This means that the population is distributed to depict where people may actually live (e.g., not in waterbodies or industrial areas). In the map above, darker colors represent areas where more people live, and lighter colors are where fewer people live.

Figure 8. People who speak English 'less than well'

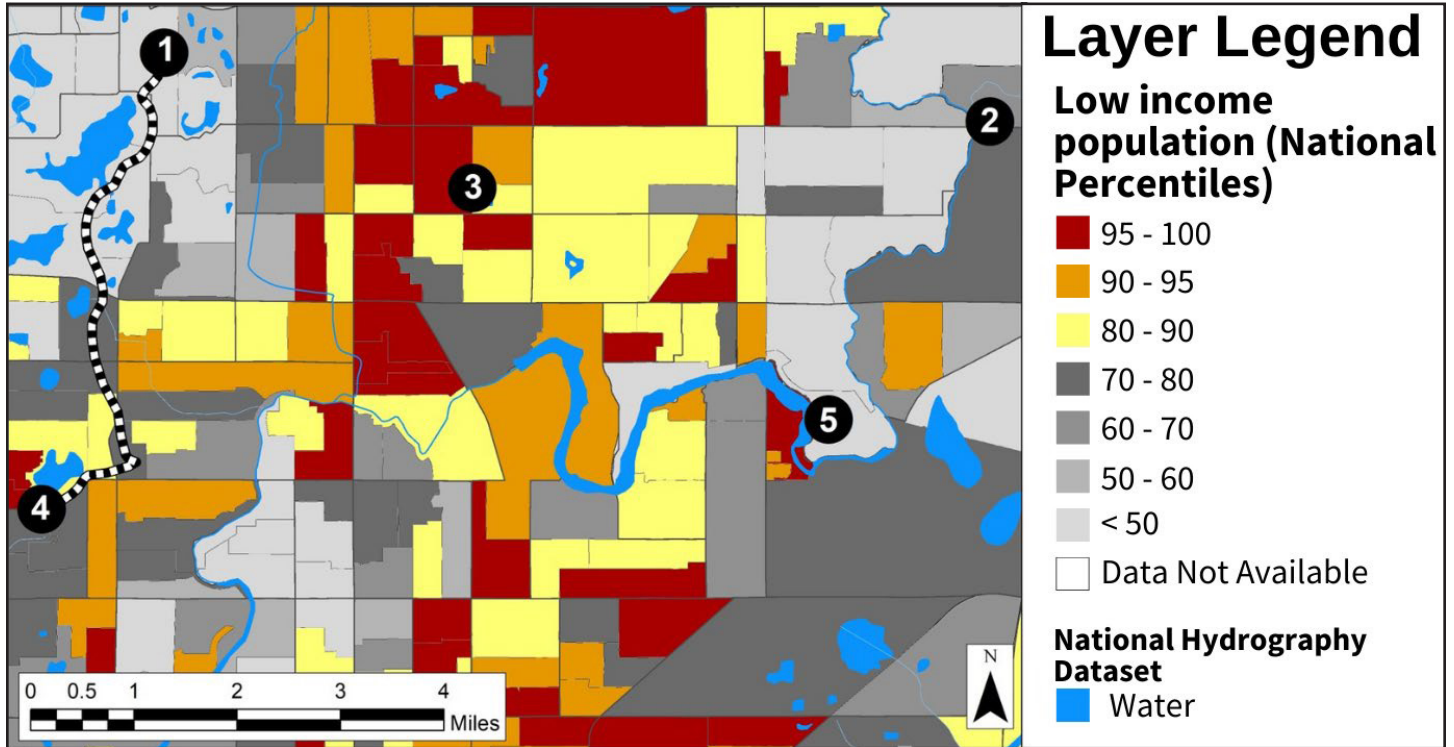


This map presents the percentage of people who self-reported their ability to speak English as “less than well” in 2014-2018 ACS.

EJSCREEN Maps

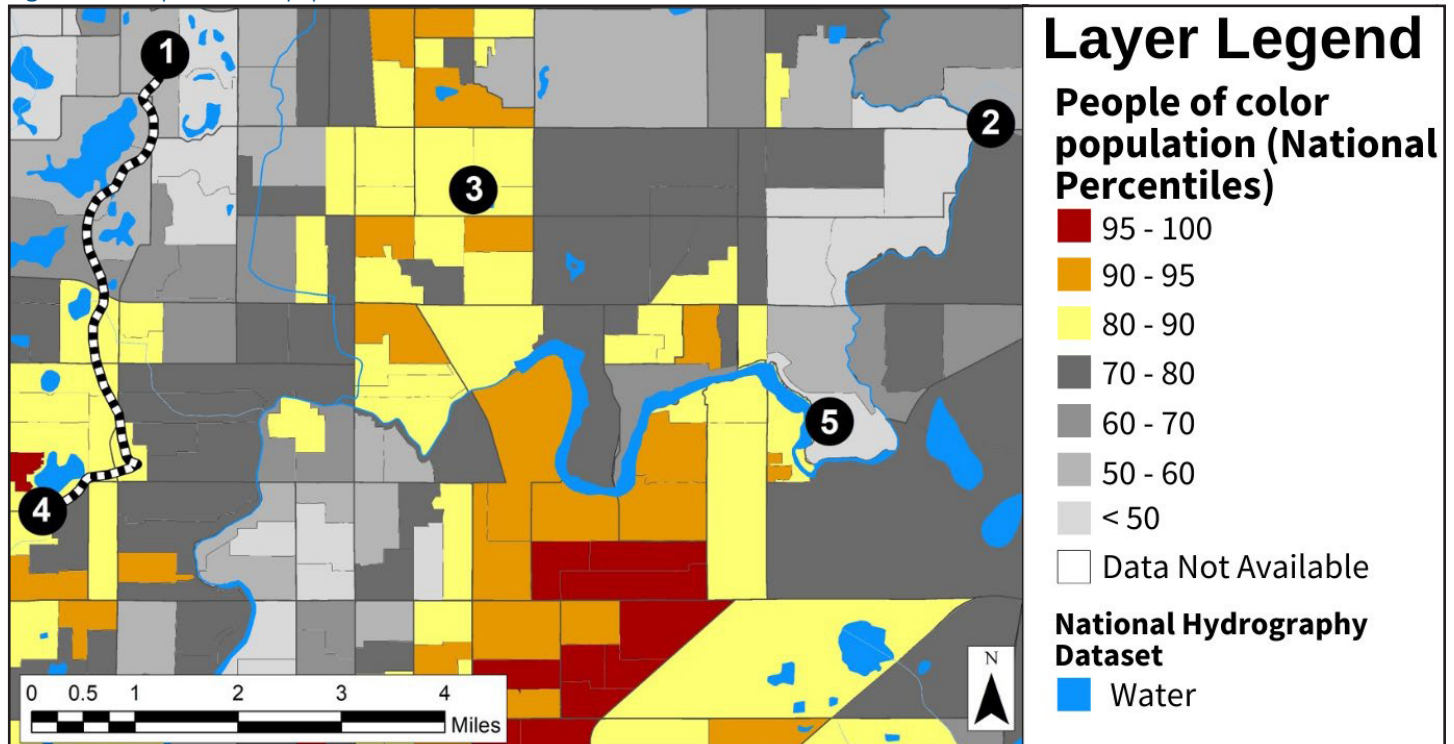
EJSCREEN maps are displayed as a percentile when compared to the rest of the country. For example, a block group at the 95th percentile in the below low-income map means that only 5% of the block groups in the country have a higher percentage of low-income households than that selected block group.

Figure 9. Low income population



This map shows the percentage of households where the household income is less than or equal to twice the federal “poverty level,” displayed by census block group as a percentile when compared to the rest of the country (2020).

Figure 10. People of color population



This map shows the percent of individuals in a block group who list their racial status as a race “other than white alone” and/or list their ethnicity as Hispanic or Latino, displayed as a percentile when compared to the rest of the country (2020).