

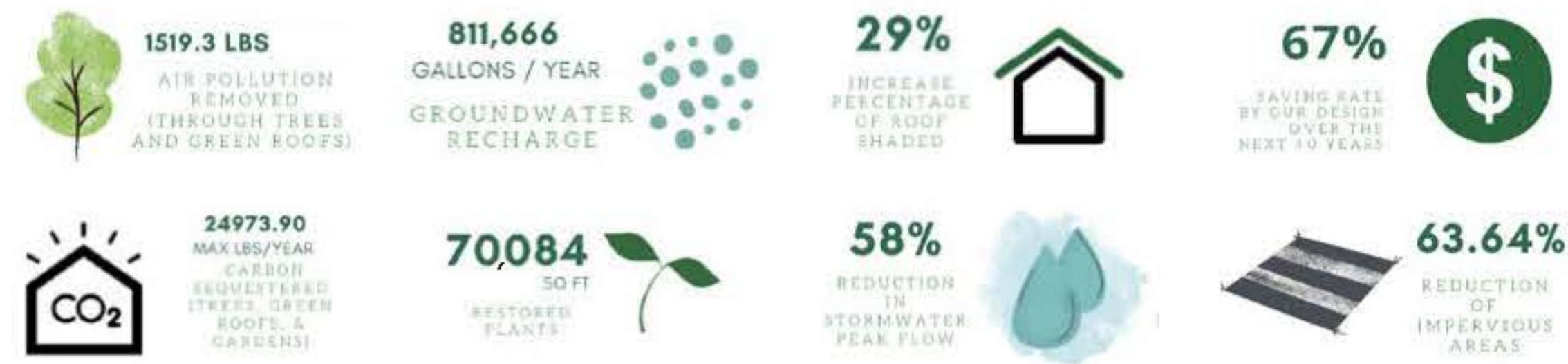
GETTING TO GREEN

Connected Spaces for Environmental Justice and Stormwater Management at Sayre High School

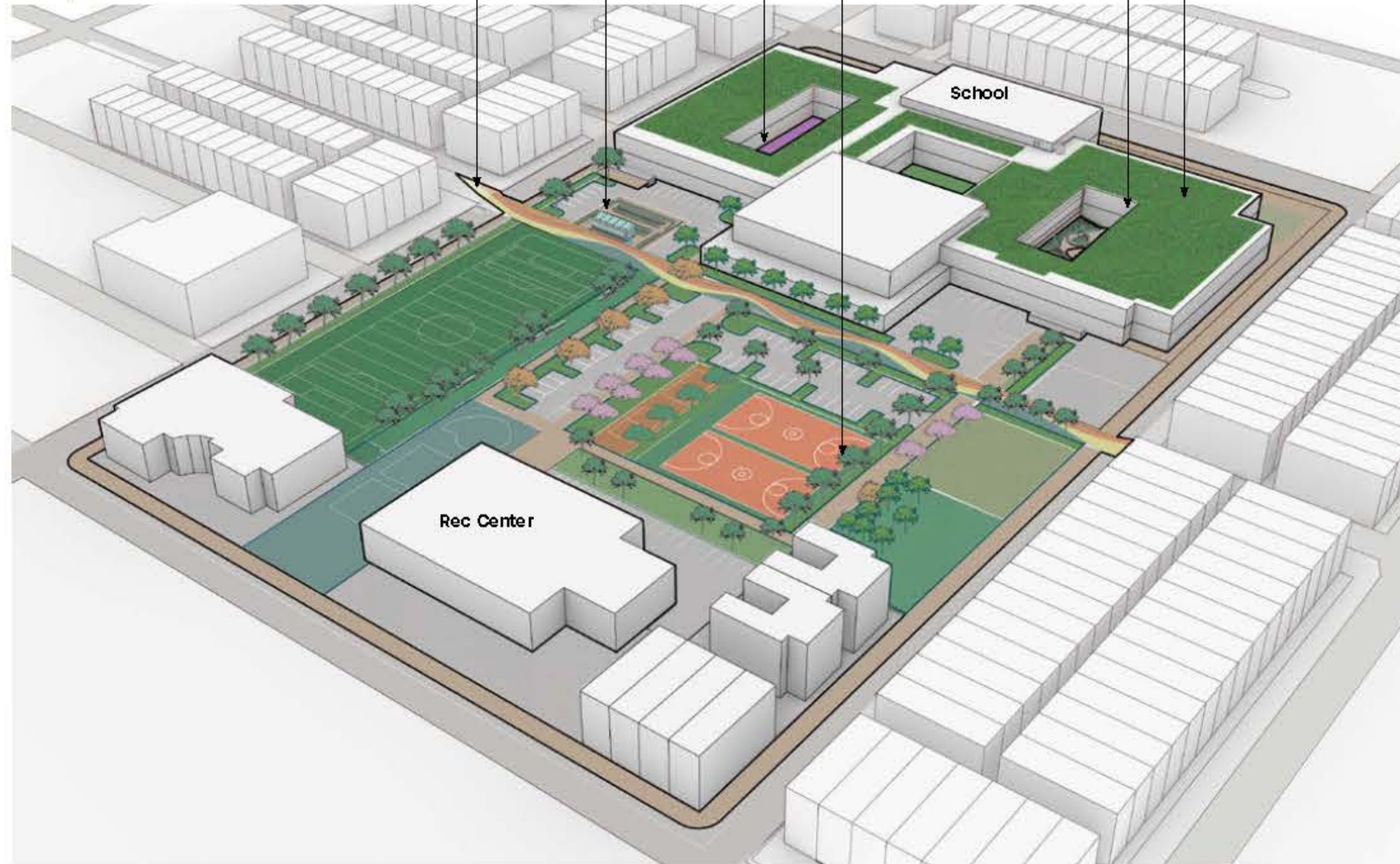
Sayre High School has many assets; an onsite health center, a small garden program, and beautiful student-created murals all serve to create a vibrant community hub. However, the school lacks green stormwater infrastructure (GSI), access to healthy food, green space, and places for students to gather. To address this discrepancy, we propose a project which will leverage the lived experiences and local expertise of community residents alongside the technical skills of University of Pennsylvania students to co-design, fund, and ultimately implement a GSI installation at the school which will also act as a green space for recreation and gathering while providing a multitude of nutritional, environmental, and educational co-benefits. Design elements will include a green roof, rain gardens, permeable pavement, bioswales and tree trenches, greenhouse and raised beds.

PROJECT GOALS

1. Promote environmental justice
2. Reduce combined sewer overflow discharge
3. Enhance positive mental health outcomes
4. Create a sense of school pride
5. Improve STEM education opportunities
6. Foster environmental stewardship
7. Provide access to fresh fruit & vegetables
8. Create student and community gathering spaces



"With the pandemic I think it is most important for students to have a green space outside to relax, and where it is safe. There are articles that talk about the number of trees and green space associated with socioeconomic levels"
-Sayre teacher



Gathering Courtyard



Community Promenade



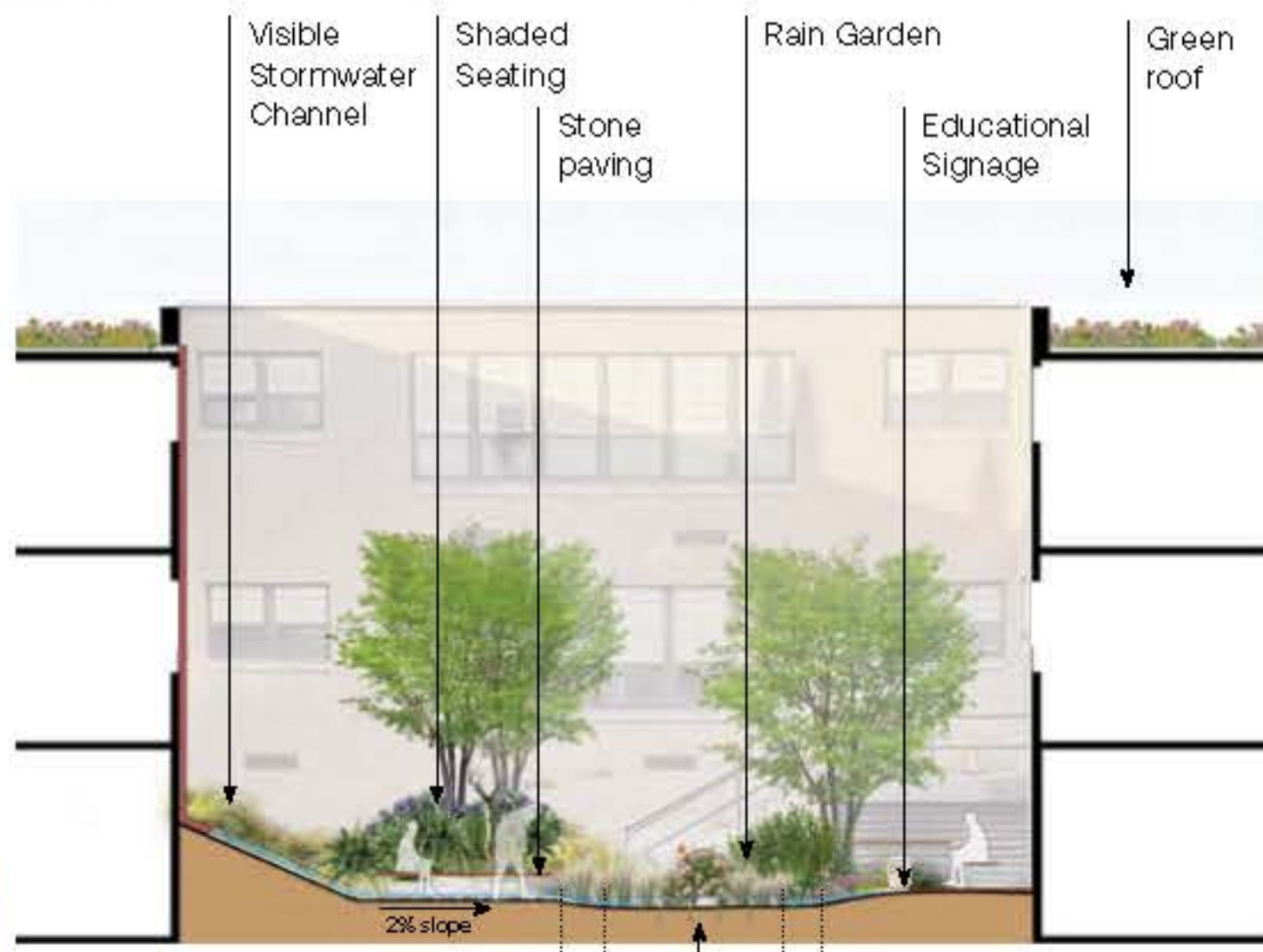
Pollinator Viewing Garden



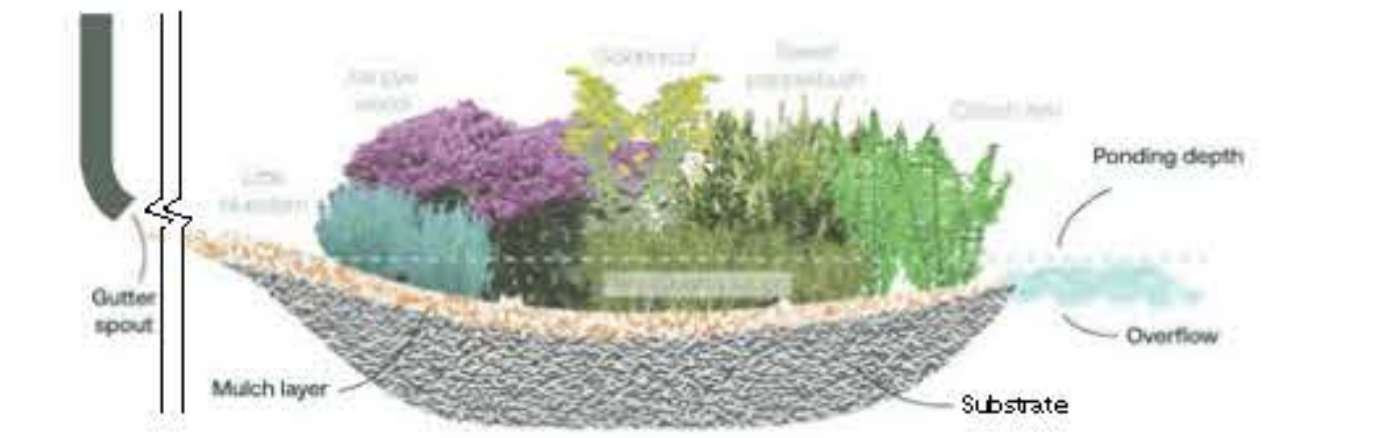
- 1 Sayre High School
- 2 Pollinator Viewing Garden
- 3 Existing Vegetable Garden
- 4 Gathering Courtyard
- 5 Greenhouse & Raised Beds
- 6 Sports Courts
- 7 Community Promenade
- 8 Recreation Spine
- 9 Orchard Planting
- 10 Viewing mound
- 11 Sayre Rec. Center
- 12 Parking



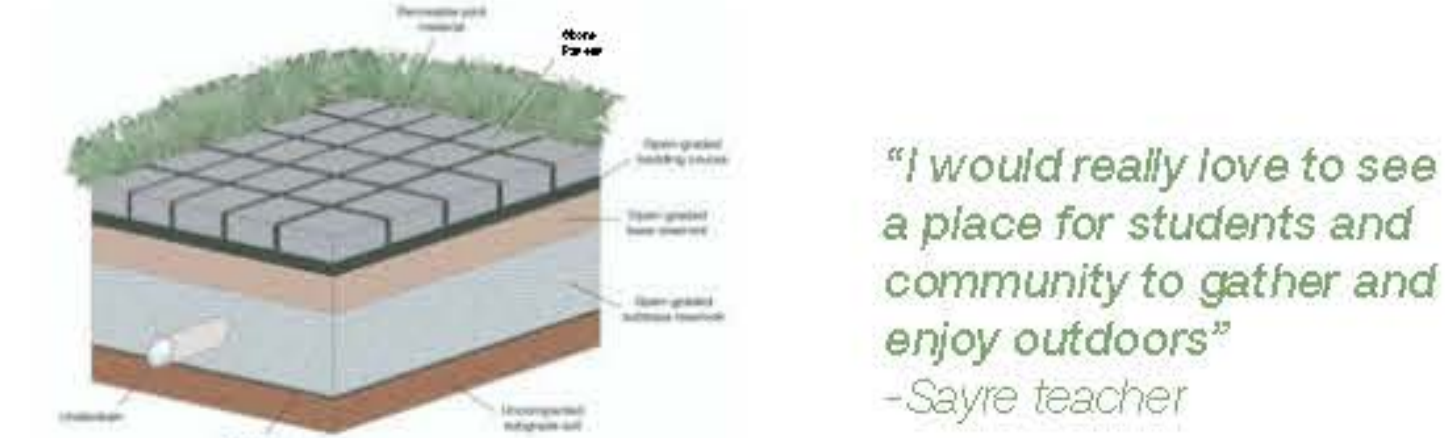
Viewing Garden Courtyard



Gathering Courtyard



Rain Garden Detail



Permeable Pavement Detail

"I would really love to see a place for students and community to gather and enjoy outdoors"
-Sayre teacher

Rain Garden Plant Palette



Orchard Palette



Pollinator Garden Species

