

Table 1  
Continuous Air Monitoring Results  
East Palestine Derailment Site  
East Palestine, Columbiana County, Ohio

**Monitoring Period: 02/13/2023 00:01 to 02/15/2023 05:39**

| <b>Air Monitoring Instrument: AreaRAE Pro<br/>Serial Number</b> | <b>Analyte</b>         | <b>Screening Level<sup>1</sup></b> | <b>Screening Level Exceeded?</b> | <b>8-hour Period Concentration Range</b> | <b>Average of All 8-hour Periods</b> |
|---|------------------------|------------------------------------|----------------------------------|--|--------------------------------------|
| <b>W01A00000610</b>   | VOC (ppm)              | 0.5 ppm                            | No                               | 0.00 to 0.00                             | 0.0                                  |
|   | CO (ppm)               | 9 ppm                              | No                               | 0.0 to 0.0                               | 0.0                                  |
|   | H <sub>2</sub> S (ppm) | 0.1 ppm                            | No                               | 0.0 to 0.0                               | 0.0                                  |
|   | LEL (%)                | > 5%                               | No                               | 0.0 to 0.0                               | 0.0                                  |
| <b>W01A00001706</b>   | VOC (ppm)              | 0.5 ppm                            | No                               | 0.00 to 0.30                             | 0.1                                  |
|   | CO (ppm)               | 9 ppm                              | No                               | 0.00 to 0.01                             | 0.0                                  |
|   | H <sub>2</sub> S (ppm) | 0.1 ppm                            | No                               | 0.0 to 0.0                               | 0.0                                  |
|   | LEL (%)                | > 5%                               | No                               | 0.0 to 0.0                               | 0.0                                  |
| <b>W01A00001707</b>   | VOC (ppm)              | 0.5 ppm                            | No                               | 0.00 to 0.00                             | 0.0                                  |
|   | CO (ppm)               | 9 ppm                              | No                               | 0.0 to 0.0                               | 0.0                                  |
|   | H <sub>2</sub> S (ppm) | 0.1 ppm                            | No                               | 0.0 to 0.0                               | 0.0                                  |
|   | LEL (%)                | > 5%                               | No                               | 0.0 to 0.0                               | 0.0                                  |
| <b>W01A00001708</b>   | VOC (ppm)              | 0.5 ppm                            | No                               | 0.00 to 0.00                             | 0.0                                  |
|   | CO (ppm)               | 9 ppm                              | No                               | 0.0 to 0.0                               | 0.0                                  |
|   | H <sub>2</sub> S (ppm) | 0.1 ppm                            | No                               | 0.0 to 0.0                               | 0.0                                  |
|   | LEL (%)                | > 5%                               | No                               | 0.0 to 0.0                               | 0.0                                  |
| <b>W01A00001709</b>   | VOC (ppm)              | 0.5 ppm                            | No                               | 0.00 to 0.02                             | 0.0                                  |
|   | CO (ppm)               | 9 ppm                              | No                               | 0.0 to 0.0                               | 0.0                                  |
|   | H <sub>2</sub> S (ppm) | 0.1 ppm                            | No                               | 0.0 to 0.0                               | 0.0                                  |
|   | LEL (%)                | > 5%                               | No                               | 0.0 to 0.0                               | 0.0                                  |
| <b>W01A00001710</b>   | VOC (ppm)              | 0.5 ppm                            | No                               | 0.00 to 0.07                             | 0.0                                  |
|   | CO (ppm)               | 9 ppm                              | No                               | 0.00 to 0.13                             | 0.0                                  |
|   | H <sub>2</sub> S (ppm) | 0.1 ppm                            | No                               | 0.0 to 0.0                               | 0.0                                  |
|   | LEL (%)                | > 5%                               | No                               | 0.0 to 0.0                               | 0.0                                  |
| <b>W01A00001712</b>   | VOC (ppm)              | 0.5 ppm                            | No                               | 0.00 to 0.00                             | 0.0                                  |
|   | CO (ppm)               | 9 ppm                              | No                               | 0.00 to 0.06                             | 0.0                                  |
|   | H <sub>2</sub> S (ppm) | 0.1 ppm                            | No                               | 0.0 to 0.0                               | 0.0                                  |
|   | LEL (%)                | > 5%                               | No                               | 0.0 to 0.0                               | 0.0                                  |
| <b>W01A00001713</b>   | VOC (ppm)              | 0.5 ppm                            | No                               | 0.00 to 0.11                             | 0.0                                  |
|   | CO (ppm)               | 9 ppm                              | No                               | 0.00 to 0.00                             | 0.0                                  |
|   | H <sub>2</sub> S (ppm) | 0.1 ppm                            | No                               | 0.0 to 0.0                               | 0.0                                  |
|   | LEL (%)                | > 5%                               | No                               | 0.0 to 0.0                               | 0.0                                  |
| <b>W01A00002175</b>   | VOC (ppm)              | 0.5 ppm                            | No                               | 0.00 to 0.00                             | 0.0                                  |
|   | CO (ppm)               | 9 ppm                              | No                               | 0.00 to 0.00                             | 0.0                                  |
|   | H <sub>2</sub> S (ppm) | 0.1 ppm                            | No                               | 0.0 to 0.0                               | 0.0                                  |
|   | LEL (%)                | > 5%                               | No                               | 0.0 to 0.0                               | 0.0                                  |
| <b>W01A00002653</b>   | VOC (ppm)              | 0.5 ppm                            | No                               | 0.00 to 0.00                             | 0.0                                  |
|   | CO (ppm)               | 9 ppm                              | No                               | 0.00 to 0.22                             | 0.0                                  |
|   | H <sub>2</sub> S (ppm) | 0.1 ppm                            | No                               | 0.0 to 0.0                               | 0.0                                  |
|   | LEL (%)                | > 5%                               | No                               | 0.0 to 0.0                               | 0.0                                  |
| <b>W01A00002654</b>   | VOC (ppm)              | 0.5 ppm                            | No                               | 0.00 to 0.00                             | 0.0                                  |
|   | CO (ppm)               | 9 ppm                              | No                               | 0.00 to 0.02                             | 0.0                                  |
|   | H <sub>2</sub> S (ppm) | 0.1 ppm                            | No                               | 0.0 to 0.0                               | 0.0                                  |
|   | LEL (%)                | > 5%                               | No                               | 0.0 to 0.0                               | 0.0                                  |
| <b>W01A00002655</b>   | VOC (ppm)              | 0.5 ppm                            | No                               | 0.00 to 0.00                             | 0.0                                  |
|   | CO (ppm)               | 9 ppm                              | No                               | 0.00 to 0.05                             | 0.0                                  |
|   | H <sub>2</sub> S (ppm) | 0.1 ppm                            | No                               | 0.0 to 0.0                               | 0.0                                  |
|   | LEL (%)                | > 5%                               | No                               | 0.0 to 0.0                               | 0.0                                  |
|   | HCN (ppm)              | 1 ppm                              | No                               | 0.00 to 0.05                             | 0.0                                  |

See notes on last page.

Table 1  
 Continuous Air Monitoring Results  
 East Palestine Derailment Site  
 East Palestine, Columbiana County, Ohio

**Monitoring Period: 02/13/2023 00:01 to 02/15/2023 05:39**

| <b>Air Monitoring Instrument: AreaRAE Pro<br/>Serial Number</b> | <b>Analyte</b>         | <b>Screening Level<sup>1</sup></b> | <b>Screening Level Exceeded?</b> | <b>8-hour Period Concentration Range</b> | <b>Average of All 8-hour Periods</b> |
|---|------------------------|------------------------------------|----------------------------------|--|--------------------------------------|
| <b>W01A00002656</b>   | VOC (ppm)              | 0.5 ppm                            | No                               | 0.00 to 0.00                             | 0.0                                  |
|   | CO (ppm)               | 9 ppm                              | No                               | 0.00 to 0.03                             | 0.0                                  |
|   | H <sub>2</sub> S (ppm) | 0.1 ppm                            | No                               | 0.0 to 0.0                               | 0.0                                  |
|   | LEL (%)                | > 5%                               | No                               | 0.0 to 0.0                               | 0.0                                  |
|   | HCN (ppm)              | 1 ppm                              | No                               | 0.0 to 0.0                               | 0.0                                  |
| <b>W01A00002928</b>   | VOC (ppm)              | 0.5 ppm                            | No                               | 0.00 to 0.00                             | 0.0                                  |
|   | CO (ppm)               | 9 ppm                              | No                               | 0.0 to 0.0                               | 0.0                                  |
|   | H <sub>2</sub> S (ppm) | 0.1 ppm                            | No                               | 0.0 to 0.0                               | 0.0                                  |
|   | LEL (%)                | > 5%                               | No                               | 0.0 to 0.0                               | 0.0                                  |
| <b>W01A00002930</b>   | VOC (ppm)              | 0.5 ppm                            | No                               | 0.00 to 0.00                             | 0.0                                  |
|   | CO (ppm)               | 9 ppm                              | No                               | 0.00 to 0.04                             | 0.0                                  |
|   | H <sub>2</sub> S (ppm) | 0.1 ppm                            | No                               | 0.0 to 0.0                               | 0.0                                  |
|   | LEL (%)                | > 5%                               | No                               | 0.0 to 0.0                               | 0.0                                  |

**Notes:**

<sup>1</sup> Site-Specific Action Level stated in the Tetra Tech Air Monitoring and Sampling Plan.

Air monitoring measurements have been averaged over a 8-hour time period and summarized above.

Air monitoring is not performed during inclement weather conditions/rain and thunderstorms.

< - Less than

> - Greater than

% - Percent

CO - Carbon Monoxide

H<sub>2</sub>S - Hydrogen Sulfide

HCN - Hydrogen Cyanide

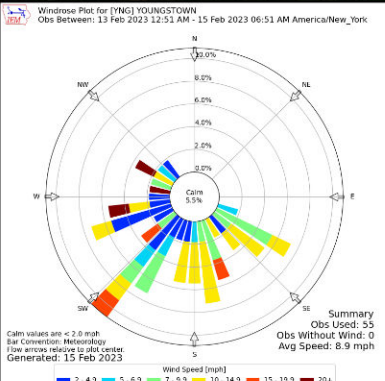
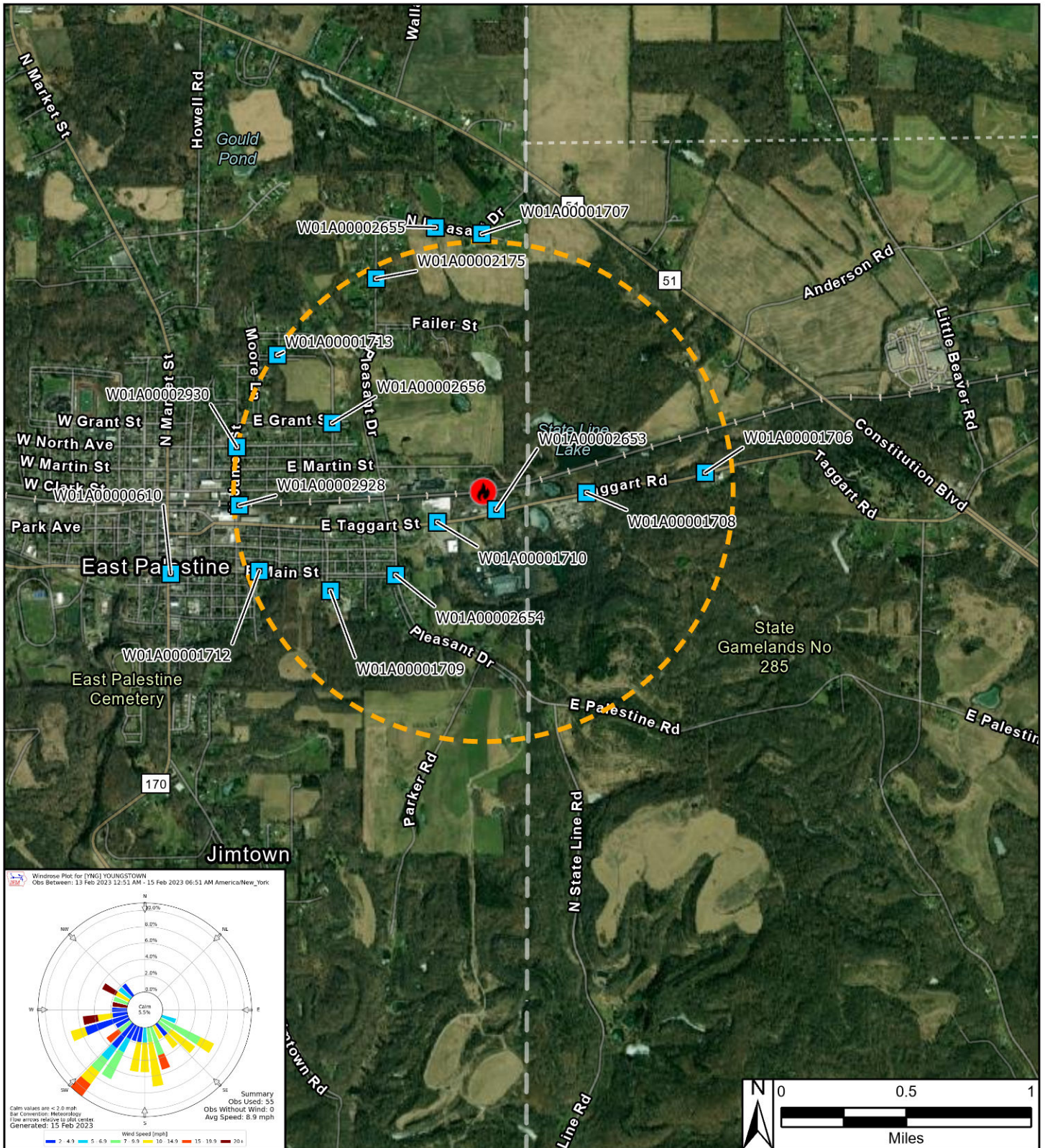
LEL - Lower Explosive Limit

O<sub>2</sub> - Oxygen

ppm - Parts per million

S/N - Serial number

VOC - Volatile organic compounds



**Legend**

- Continuous Air Monitoring Location
- 🔥 Derailment Location
- ⬭ One Mile Radius

East Palestine Derailment ER Site  
 75 E Main St  
 East Palestine, Columbiana County, OH 44413

**Figure 1**  
**Continuous Air Monitoring Stations**



Prepared For: EPA | Prepared By: Tetra Tech Inc.