

Table 1
Roving Air Monitoring Results Summary Table
East Palestine Derailment Emergency Response
East Palestine, Ohio
Monitoring Period: 02/24/2023 10:47 to 02/25/2023 15:02

Location	Date/Time	LEL (%)	CO (ppm)	H ₂ S (ppm)	VOC (ppm)	PM _{2.5} (mg/m ³) ¹	PM ₁₀ (mg/m ³) ¹	HCN (ppm)*
		Screening Levels						
		5%	9 ppm	0.1 ppm	0.5 ppm	0.035 mg/m ³ (24-hour TWA)	0.035 mg/m ³ (24-hour TWA)	1 ppm
PCR-NA-17	2/24/2023 13:41	0	0	0	0	0	0.006	0.012
PCR-NA-18	2/24/2023 14:36	0	0	0	0	0	0.019	0.03
PCR-NA-19	2/24/2023 13:23	0	0	0	0	0	0.002	0.002
PCR-NA-20	2/24/2023 14:06	0	0	0	0	0	0.002	0.002
PCR-NA-21	2/24/2023 15:35	0	0	0	0	0	0.001	0.003
PCR-NA-22	2/24/2023 14:19	0	0	0	0	0	0.004	0.004
PCR-N-03	2/24/2023 9:10	0	0	0	0	0	0.003	0.004
	2/24/2023 16:06	0	0	0	0	0	0.005	0.009
	2/25/2023 13:20	0	0	0	0	0	0.005	0.005
PCR-N-04	2/24/2023 8:51	0	0	0	0	0	0.005	0.005
	2/24/2023 16:15	0	0		0	0	0.002	0.002
	2/25/2023 10:51	0	0	0	0	0	0.012	0.018
PCR-N-05	2/24/2023 8:37	0	0	0	0	0	0.007	0.008
	2/24/2023 16:37	0						
	2/24/2023 16:39	0	0	0	0	0	0.011	0.02
	2/25/2023 9:19	0	0	0	0	0	0.007	0.007
	2/25/2023 14:49	0	0	0	0	0	0.009	0.012
PCR-N-06	2/24/2023 8:31	0	0	0	0	0	0.004	0.004
	2/24/2023 16:48	0	0	0	0	0	0.002	0.002
	2/25/2023 11:13	0	0	0	0	0	0.006	0.008
PCR-N-07	2/24/2023 8:19	0	0	0	0	0	0.005	0.006
	2/24/2023 16:57	0	0	0	0	0	0.003	0.003
	2/25/2023 13:02	0	0	0	0	0	0.005	0.005
PCR-N-08	2/24/2023 8:03	0	0	0	0	0	0.006	0.007
	2/24/2023 17:04	0	0	0	0	0	0.002	0.002
	2/25/2023 12:44	0	0	0	0	0	0.004	0.004
PCR-N-09	2/24/2023 9:54	0	0	0		0	0.003	0.004
	2/24/2023 17:13	0	0	0	0	0	0.01	0.019
	2/25/2023 11:31	0	0	0	0	0	0.005	0.006
PCR-N-10	2/24/2023 9:25	0	0	0	0	0	0.002	0.003
	2/24/2023 17:29	0	0	0	0	0	0.004	0.005
	2/25/2023 7:47	0	0	0	0	0	0.011	0.008

See notes on last page.

Roving Air Monitoring Results Summary Table
 East Palestine Derailment Emergency Response
 East Palestine, Ohio
 Monitoring Period: 02/24/2023 10:47 to 02/25/2023 15:02

Location	Date/Time	LEL (%)	CO (ppm)	H ₂ S (ppm)	VOC (ppm)	PM _{2.5} (mg/m ³) ¹	PM ₁₀ (mg/m ³) ¹	HCN (ppm)*
		Screening Levels						
		5%	9 ppm	0.1 ppm	0.5 ppm	0.035 mg/m ³ (24-hour TWA)	0.035 mg/m ³ (24-hour TWA)	1 ppm
PCR-N-10	2/25/2023 14:35	0	0	0	0	0	0.005	0.005
PCR-N-11	2/24/2023 17:42	0	0	0	0	0	0.013	0.015
	2/25/2023 10:26	0	0	0	0	0	0.007	0.007
PCR-N-12	2/24/2023 18:07	0	0	0	0	0	0.003	0.004
	2/25/2023 10:38	0	0	0	0	0	0.007	0.008
PCR-N-13	2/25/2023 11:22	0	0	0	0	0	0.008	0.011
PCR-NA-02	2/24/2023 10:47	0	0	0	0	0	0.009	0.011
	2/24/2023 15:10	0	0	0	0	0	0.003	
PCR-NA-12	2/24/2023 11:31	0	0	0	0	0	0.004	0.009
PCR-NA-14	2/24/2023 11:01	0	0	0	0	0	0.002	0.002
	2/24/2023 15:22	0	0	0	0	0	0.002	0.002
PCR-NA-15	2/24/2023 11:39	0	0	0	0	0	0.002	0.002
PCR-S-01	2/25/2023 9:57	0	0	0	0	0	0.007	0.007
PCR-S-04	2/25/2023 13:31	0	0	0	0	0	0.005	0.006
PCR-S-05	2/25/2023 13:41	0	0	0	0	0	0.008	0.008
PCR-S-06	2/25/2023 9:43	0	0	0	0	0	0.006	0.012
PCR-S-07	2/25/2023 10:12	0	0	0	0	0	0.009	0.009
PCR-S-08	2/25/2023 9:32	0	0	0	0	0	0.01	0.01
	2/25/2023 15:02	0	0	0	0	0	0.012	0.015
PCR-S-09	2/25/2023 13:51	0	0	0	0	0	0.006	0.007
PCR-S-10	2/25/2023 13:12	0	0	0	0	0	0.005	0.005

See notes on last page.

Roving Air Monitoring Results Summary Table
 East Palestine Derailment Emergency Response
 East Palestine, Ohio
 Monitoring Period: 02/24/2023 10:47 to 02/25/2023 15:02

Location	Date/Time	LEL (%)	CO (ppm)	H ₂ S (ppm)	VOC (ppm)	PM _{2.5} (mg/m ³) ¹	PM ₁₀ (mg/m ³) ¹	HCN (ppm)*
		Screening Levels						
		5%	9 ppm	0.1 ppm	0.5 ppm	0.035 mg/m ³ (24-hour TWA)	0.035 mg/m ³ (24-hour TWA)	1 ppm

Notes:

 Highlighted indicate detections above screening levels

 Grey cells indicate no measurement was collected for that specific parameter

1 - Site-Specific Public Health Screening Levels for particulate matter are based on 24-hour time-weighted averages (TWAs). Fixed discrete monitoring readings are discrete readings, and so do not represent conditions over a full 24-hour period.

* - the screening level is the instrument's limit of detection.

% - percent

CO - carbon monoxide

H₂S - hydrogen sulfide

HCN - hydrogen cyanide

LEL - lower explosive limit

mg/m³ - milligrams per cubic meter

O₂ - oxygen

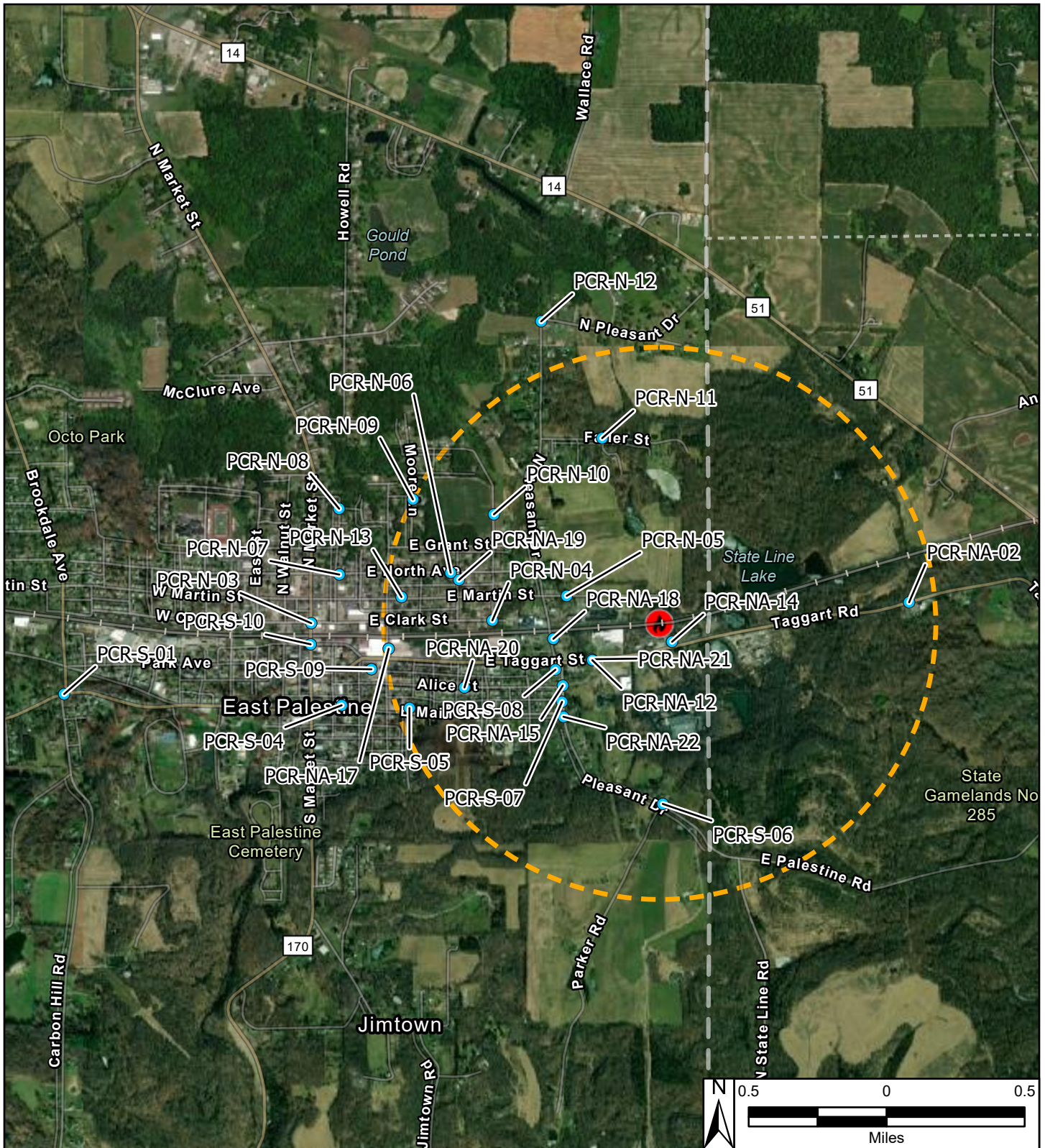
PM_{2.5} - particles that are 2.5 micrometers and smaller

PM₁₀ - particles that are 10 micrometers and smaller

ppm - parts per million

TWA - time-weighted average

VOC - volatile organic compounds



Reference Map



Site Location

Legend

- Derailment Location
- One Mile Radius
- Roaming Air Monitoring Locations

East Palestine Derailment ER Site
 75 E Main St
 East Palestine, Columbiana County, OH 44413

Figure 1
Roaming Air Monitoring Locations



Prepared For: EPA

Prepared By: Tetra Tech Inc.