

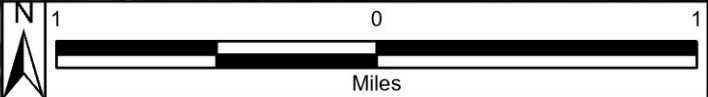
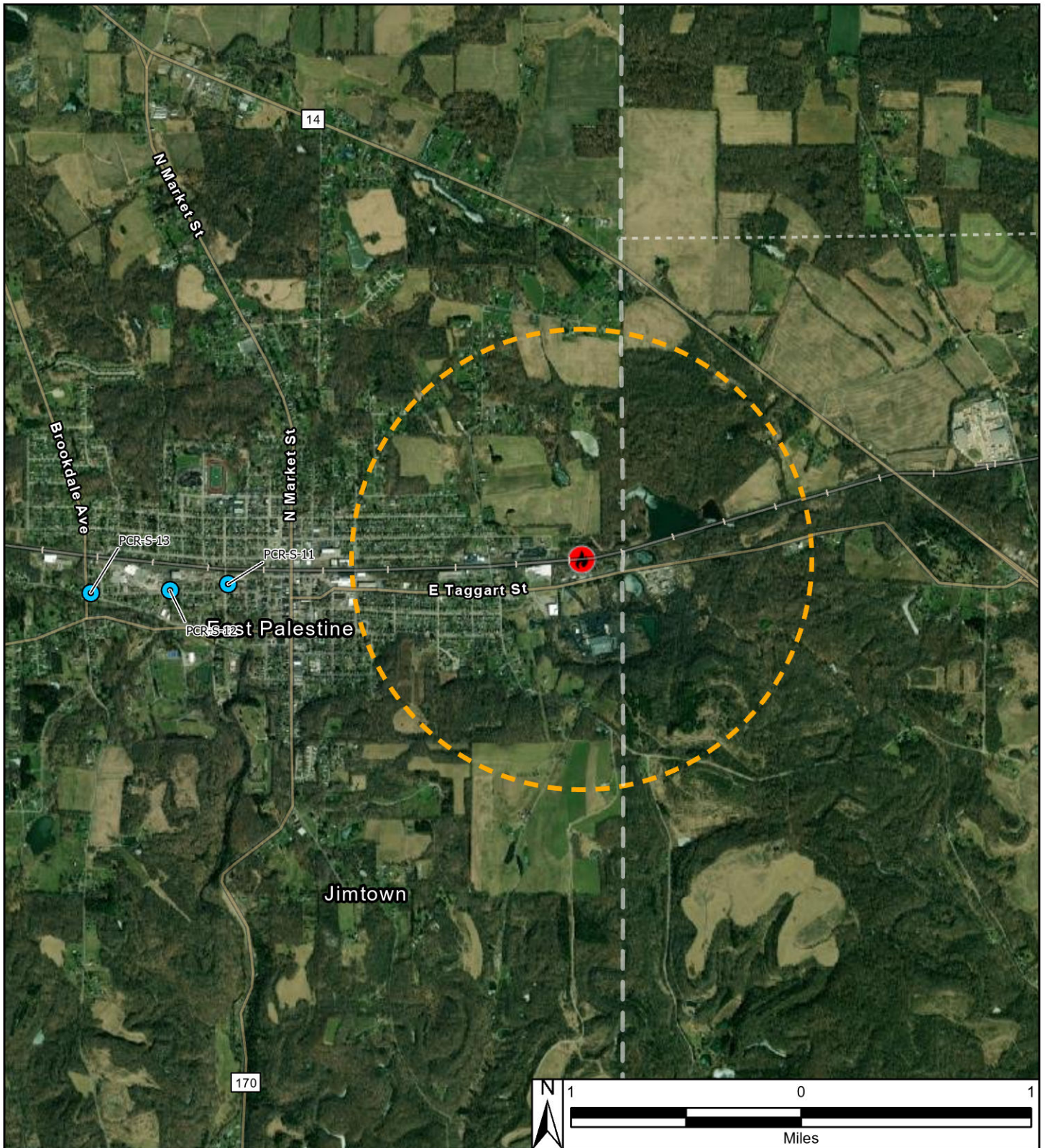
Table 1
Roving Air Monitoring Results Summary Table
East Palestine Derailment Emergency Response
East Palestine, Ohio
Monitoring Period: 02/09/2023 04:48 to 02/09/2023 05:21

Location	Date/Time	O ₂ (%)	LEL (%)	CO (ppm)	H ₂ S (ppm)	VOC (ppm)	PM _{2.5} (mg/m ³)	PM ₁₀ (mg/m ³)	HCN (ppm)	Benzene (ppm)	Phosgene (ppm)*	HCl (ppm)
		Screening Levels										
		19.5% to 23.5%	5%	9 ppm	0.1 ppm	0.5 ppm	0.035 mg/m ³	0.035 mg/m ³	1 (ppm)	0.01 ppm	0.002 ppm	1.4 ppm
PCR-S-11	2/9/2023 4:48	20.9	0	0	0	0	0.023	0.023	0	0	0	0
PCR-S-12	2/9/2023 5:02	20.9	0	0	0	0	0.024	0.025	0	0	0	0
PCR-S-13	2/9/2023 5:21	20.9	0	0	0	0	0.023	0.025	0	0	0	0

Notes:

- Highlighted indicate detections above screening levels
- Grey cells indicate no measurement was collected for that specific parameter
- * - the screening level is the instrument's limit of detection.

% - percent
CO - carbon monoxide
H₂S - hydrogen sulfide
HCl - hydrogen chloride
HCN - hydrogen cyanide
LEL - lower explosive limit
mg/m³ - milligrams per cubic meter
O₂ - oxygen
PM_{2.5} - particles that are 2.5 micrometers and smaller
PM₁₀ - particles that are 10 micrometers and smaller
ppm - parts per million
VOC - volatile organic compounds



Reference Map



Legend

-  Derailment Location
-  One Mile Radius
-  Roaming Air Monitoring Locations

East Palestine Derailment ER Site
 75 E Main St
 East Palestine, Columbiana County, OH 44413

Figure 1
Roaming Air Monitoring Locations



Prepared For: EPA

Prepared By: Tetra Tech Inc.