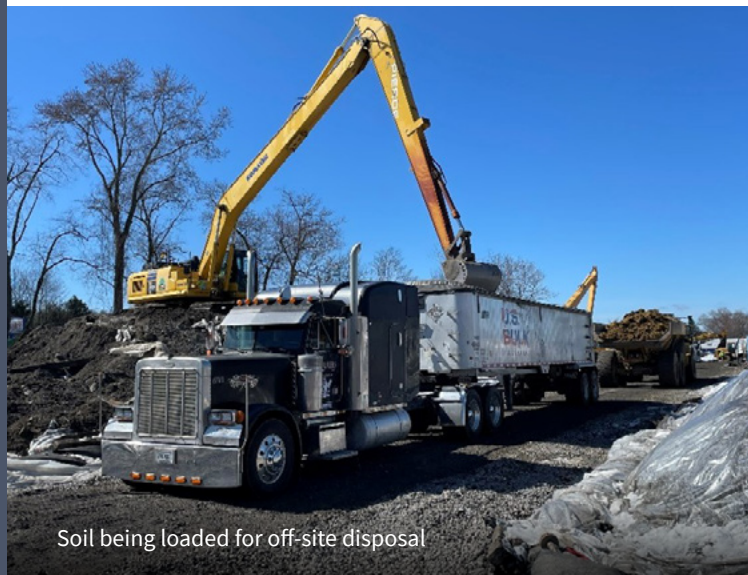


East Palestine

TRAIN DERAILMENT RESPONSE

Serving East Palestine, Negley, Darlington and surrounding communities

NEWSLETTER



Soil being loaded for off-site disposal

PROGRESS MADE

Containment Zone Around Blue Lake Tanks

Sheet piling is being installed around the large blue lake tanks at the derailment site. This will act as a secondary form of containment around the tanks. The sheet piling is fixed into the ground to make sure no wastewater leaks from the tanks and that any runoff is contained and captured.

Stream Contaminant Mitigation and Water Quality Improvement Efforts in Sulphur Run and Leslie Run are nearing completion

Air sparging involves putting air into the water so that oxygen and microbes break down chemicals, like acrylates and glycols, in sediment. Ohio EPA's website has an interactive map with sampling results that shows the effectiveness of this technique and surface water quality continues to improve. Along with containment and vacuuming/removing water from the stream,

this is a standard technique for emergency response to eliminate contaminants from water.

New Pennsylvania Health Resources

Pennsylvania residents now have access to new community-based health resources. Residents can call the Department of Health Hotline (877-PA-HEALTH) to request a checkup to help identify the root of their health concerns. A nurse will connect callers to the appropriate local health care services, and access to care is open to people without insurance or transportation. Moving forward, this health resource network will replace the Health Resource Center that has been operating at the Darlington Township Building.

Complaint Filed Against Norfolk Southern

EPA and the Department of Justice have sued Norfolk Southern over the train derailment. The suit aims to

hold Norfolk Southern accountable for polluting waterways and ensure it pays all costs of the environmental cleanup. EPA is acting in its authority under the Clean Water Act and the Comprehensive Environmental Response, Compensation, and Liability Act.



A cleared area on the south side of the track is backfilled with clean soil and resurfaced



Sheet piling is installed as a method for secondary containment

THE WEEK AHEAD

At the derailment site:

- Continued heavy truck traffic along designated routes.
- Taggart Street remains closed to the public.
- Excavation and construction work will continue at the site.
- Contaminated soil and wastewater will continue to be shipped off-site.
- Two large 1-million-gallon blue lake tanks will be used to temporarily hold wastewater, reducing the number of smaller storage tanks.

In the greater community:

- EPA's Community Welcome Center remains open to the public from 8 a.m. to 8 p.m. daily. EPA staff are available to answer questions and address concerns.
- Air monitoring will continue at 23 locations around the community.
- EPA's Trace Atmospheric Gas Analyzer (TAGA) mobile laboratory will continue to monitor air.
- A second air analyzer similar to the TAGA is being used. You may see it following the TAGA bus around town.
- Stream agitation and aeration is nearing completion and stream soil washing will continue.

COMMUNITY CORNER

Spring is around the corner and parks are a great place to enjoy warmer weather. This week, the East Palestine Youth Sports Association will start baseball practice outdoors at the City Park – games begin April 17. To reassure residents of the safety of outdoor activities like these, EPA has sampled soil in recreation areas. Results from EPA and Norfolk Southern testing in the East Palestine City Park are below screening levels (learn more about screening levels in Did You Know?). The playground and swimming pool at the park have also been cleaned and power washed.



DID YOU KNOW?

Dioxins are a large family of chemical compounds that are often present at very low levels everywhere in the environment. Dioxins break down very slowly and can be created when chemicals, such as fuels and plastics, are burned. In rural areas, such as East Palestine and Western Pennsylvania, dioxins can come from farm vehicle exhaust, burning trash, campfires, and industrial factories. Pure dioxin looks like white crystalline needles, but in the environment, it generally attaches to soil and dust and is invisible to the eye.

When testing for dioxins in soil, it's important to establish a background level. Background levels are the level of chemicals in other areas of the county or town, not related to the derailment site. In these other areas, the level of chemicals is a result of naturally occurring or human-made activities. Naturally occurring activities are those

that are not caused by humans, such as dioxins from forest fires. Human-made activities are those that are caused by humans, such as dioxins from diesel exhaust. EPA also uses screening levels to further advise on safety.

What does “screening levels” mean?

When emergencies occur that involve releases of chemicals into the environment, screening levels are a tool that responders use to learn if there is a potential for risks to human health and the environment and if there is a need for further investigation. These levels can change depending on specific details of the incident and as cleanup progresses from emergency phases to longer term cleanup. Screening values are health protective values that are below levels at which there is a potential risk to health.



(866) 361-0526



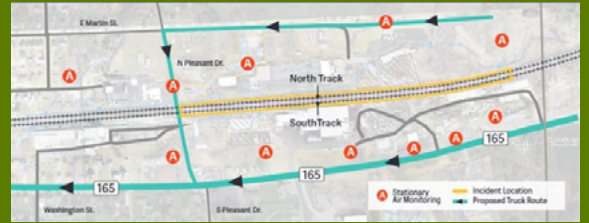
R5_eastpalestine@epa.gov



response.epa.gov/EastPalestineTrainDerailment

SAFETY MINUTE

Heavy truck traffic continues in the East Palestine area. We advise residents to be mindful of work trucks transporting liquid and solid wastes for disposal. The route map below shows the authorized truck routes in and out of town.



TOP 3 QUESTIONS OF THE WEEK

01 Is the air monitoring equipment detecting chemicals of concern?

Yes, the air monitoring and sampling equipment are capable of detecting many chemicals of concern in the community and currently detections are below levels of concern. Some of the monitoring equipment may not detect a portion of the chemicals at lower levels—specifically n-butyl acrylate. However, there are independent tools used at the same time to measure air quality. These tools can detect this and other chemicals at low concentrations, which are below levels anticipated to be harmful to health. This monitoring and sampling will continue to ensure the health and safety of the community.

02 Are odors from the derailment site dangerous?

As site work continues and waste is shipped off-site for disposal, there may be times where odors can be smelled. In general, many substances can cause odors in the outdoor air but not be at levels that can harm your health, but they can still affect your quality of life. For example, n-butyl acrylate has a distinct odor even at very low concentrations. This odor threshold is much lower than the exposure concentrations associated with potential health effects. Part of EPA's air monitoring network includes sampling devices and driving the Trace Atmospheric Gas Analyzer, or TAGA, mobile laboratory around the derailment site and nearby neighborhoods during active work hours to monitor the air for levels of potential health concern.

03 What's the difference between short-term and long-term chemical exposure levels?

Acute or short-term exposure assumes that a person has been exposed to a chemical for a short period of time. Long term, also known as chronic, exposure assumes a person has been constantly exposed to a chemical for a lifetime, or approximately 70 years.

BY THE NUMBERS

As of March 31

13,263
TONS

EST. OF CONTAMINATED
SOIL SHIPPED

9.6
million

EST. GALLONS OF LIQUID
WASTEWATER SHIPPED

627
INDOOR AIR
SCREENINGS

7 ROUNDS OF
MUNICIPAL
WELL TESTING

THE WELCOME CENTER
HAS RECEIVED

462
VISITORS



(866) 361-0526



R5_eastpalestine@epa.gov



response.epa.gov/EastPalestineTrainDerailment

KEY COMMUNITY EVENTS THIS WEEK

There are no Community Open Houses scheduled for this week

Area resources available this week are as follows:

Pennsylvania Residents:

- Call the Department of Health Hotline (877-PA-HEALTH) to connect with a nurse to find appropriate local health care services

Ohio Residents:

- East Palestine Health Assessment Clinic Hours:
 - Monday and Tuesday, April 3rd and 4th from 12-6 PM
 - First Church of Christ
20 West Martin St.

ABOUT THIS PUBLICATION

This weekly newsletter is being developed through a joint effort of local, state, federal agencies, and community organizations. If you would like more information about topics discussed, please visit response.epa.gov/EastPalestineTrainDerailment or call EPA's Information Line at **866-361-0526**



SCAN ME for a list of additional resources