

Integrating Environmental Justice into Water Resource Management



Wednesday, May 3, 2023, 3:00pm – 5:00pm Eastern

Speakers:

- **Monica Woodruff**, University of West Florida
- **Kwame Owusu Daaku**, University of West Florida
- **Alicia Lehrer**, Woonasquatucket River Watershed Council
- **Jenny Mercado**, Woonasquatucket River Watershed Council
- **Joe Fitzgerald**, Milwaukee Water Commons
- **Amy Adrihan**, Minnesota Pollution Control Agency
- **Quinn Carr**, Minnesota Pollution Control Agency
- **Helen Waqui**, Minnesota Pollution Control Agency

Watershed Academy Webcast

- The slides for today's presentations are posted on the Watershed Academy webpage.
- A recording of the webcast will be posted within the next month.

www.epa.gov/watershedacademy

Webcast Logistics

- **To Ask a Question** – Type your question into the “Questions” tool box on the right side of your screen and click “Send.”
- **To Report any Technical Issues** (such as audio problems) – Type your issue in the “Questions” tool box on the right side of your screen and click “Send” and we will respond by posting an answer in the “Questions” box.

Audience Polling



UNIVERSITY *of* WEST FLORIDA

DEPARTMENT OF EARTH AND ENVIRONMENTAL SCIENCES

ENVIRONMENTAL JUSTICE FOR NORTH PORT ST. JOE: AN LID APPROACH TO SECURING BASIC INFRASTRUCTURE

PRESENTERS:

Monica Woodruff
Dr. Kwame Owusu-Daaku

May 3rd, 2022.

OUTLINE

- The Overview
- An Opportunity for Us
- The Organization
- The Outcome
 - The Planning
 - The Process
 - The Product
- An Opportunity for You

THE OVERVIEW

THE OVERVIEW

- Florida Brownfield Association (FBA) Environmental-Justice-Leadership-in-Training (EJ-LIT) program
 - Developers
 - Objectives
 - Directors
 - Implementers



AN OPPORTUNITY FOR US

AN OPPORTUNITY FOR US

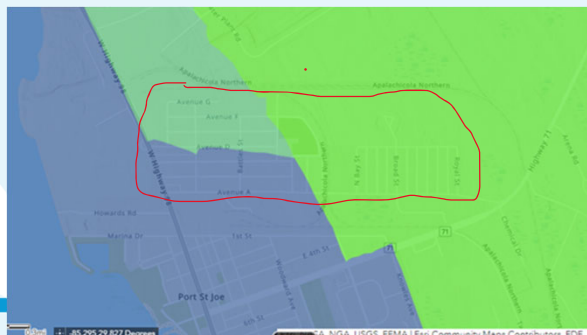
- Environmental Protection Agency's Environmental Justice Video Challenge for Students
- University of West Florida (UWF) Department of Earth and Environmental Sciences (EES) Spring 2022 Environment and Economy/Society course
- Opportunity to meet EJ-LIT objective in partnership with North Port St. Joe (NPSJ) Project Area Coalition (PAC)



THE ORGANIZATION

THE ORGANIZATION

- 5 student teams (4 students each) produced 1 video per team
- Teams had choice of topic
 - Only had to address a need of the NPSJ PAC
- 5 videos with the following foci:
 - Air and Water Quality
 - Environmental Health
 - Food Security and Waste Management
 - Housing, Economics, and Employment
 - Low-Impact Development



THE OUTCOME

THE OUTCOME

- HONORABLE MENTION!
 - Low-Impact Development!
 - Only video from EPA Region IV to win recognition



North Port St. Joe
P.A.C
project area coalition



THE OUTCOME

THE PLANNING

THE OUTCOME

THE PLANNING

- **Description of the innovative approach to identify and characterize an EJ issue(s) in a select community**
- **Overview and characterization of the EJ problem(s)/issues the tool(s) and data can address/solve**
- Description of engagement and support by the community/community organization
- Information about the proposed tool(s) and data
- Identification of the data including source(s) of data
- Description of how the intended approach will help to build capacity in the community
- Perceived benefit(s) to the community

THE OUTCOME THE PLANNING


REDEVELOPING NORTH PORT ST. JOE: Implementing the 2016 Community Master Plan

Community Theme:
Smart Streets


Infrastructure improvements are a high priority and an essential component of the redevelopment plan

Redevelopment will create new impervious surfaces that, in turn, will require additional rainwater management. North Port St. Joe straddles two major wetland systems that eventually empty into the Gulf of Mexico.

These systems can help with surface water management as part of a larger, comprehensive plan for North Port St. Joe's infrastructure. Such a plan is essential to the community's redevelopment aspirations, particularly along Martin Luther King Boulevard.



Smart Streets. An increasingly important component of community redevelopment.



North Port St. Joe's surrounding natural system.

North Port St. Joe
P.A.C.
PLANNING AND ACTION CENTER

15

Source: John Hendry (2016) from "Redeveloping North Port St. Joe: Implementing the 2016 Community Master Plan"

THE OUTCOME THE PROCESS

THE OUTCOME THE PROCESS

Poll Question:

“Do you know what low-impact technologies are?”

- Yes
- No

THE OUTCOME THE PROCESS

Design Recommendations: Tier 1 Parcel- Based Strategies*

Maximum stormwater capacity: 1.2 million gallons
with a swale depth of 1'-0"



MLK Retrofit Strategy



Residential Retrofit Strategy

Bio-retention Swales:
Captures & treats stormwater
before it enters stormwater system

“Improved stormwater management is essential to the redevelopment of the Martin Luther King corridor, as well as the subsidence of homes on and around Battle Street...Achieving this goal will require considerably more geotechnical research than UF's study was funded to provide.” - John Hendry



Vacant Retrofit Strategy
Small Stormwater Parks:
Stores water &
provides recreational areas

Existing Pipes
Flow Direction

*NOTE - All properties designated on these maps are used for demonstration purposes only. No specific sites have been designated for retrofit.

Source: University of Florida (2021) from "North Port St. Joe Community Workshop Report"

35

THE OUTCOME
THE PROCESS

Poll Question:
“Have you ever used EPA EJScreen?”

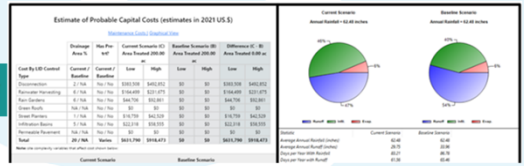
- **Yes**
- **No**

THE OUTCOME
THE PROCESS

Poll Question:
“Have you ever used EPA EnviroAtlas?”

- **Yes**
- **No**

THE OUTCOME THE PROCESS



THE OUTCOME THE PROCESS

Oral history interviews with community members of North Port St. Joe:

1. David Woods

1. Nathan Peters Jr.



THE OUTCOME
THE PRODUCT

THE OUTCOME
THE PRODUCT

**Environmental Justice for
North Port St. Joe**

an LID approach to securing basic infrastructure
before redevelopment

AN OPPORTUNITY FOR YOU

AN OPPORTUNITY FOR YOU

- Support avenues for student professional development incorporating environmental justice via:
 - Sponsorship
 - Scholarships
 - Internships
 - Jobs

No holistic watershed management without an incorporation of environmental justice!

THANK YOU FOR YOUR TIME!

ACKNOWLEDGEMENTS

- North Port St. Joe
 - Project Area Coalition
- Environmental Protection Agency
- Florida Brownfields Association
- University of West Florida
 - Earth and Environmental Sciences

QUESTIONS? COMMENTS?



WOONASQUATUCKET RIVER
WATERSHED COUNCIL

EPA Watershed Academy Webcast - Wednesday, May, 3, 2023
Integrating Environmental Justice into Water Resource Management

Empowering Community Members to Combat Climate Change

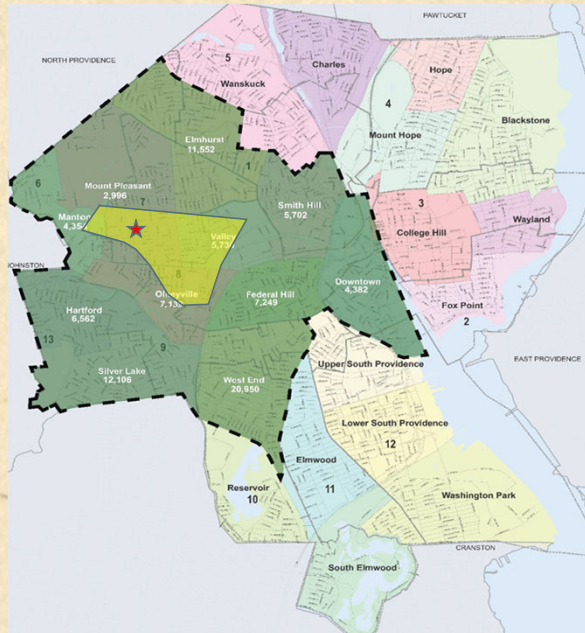


Alicia Lehrer – Executive Director

Jenny Mercado – Nuevas Voces Co-Facilitator

Olneyville, Providence RI

Almost 7,000 people live in Olneyville



Olneyville, Providence RI

- 60% Hispanic/LatinX, 15% white, 13% Black
- Median household income: \$30,000-\$40,000 a year
- Main countries of origin – Guatemala & Dominican Republic
- Also Mexicans, Bolivians, other Central Americans



Flooding



Olneyville Flood March 2010

Project Goals

- **Cultivate Engaged Climate Resilience**
- **Build Climate Justice Literacy**
- **Develop Leadership Capacity**
- **Frontline Resident Co-Governance**

Initial Surveys

Door to Door Canvassing: Bilingual (Spanish/English) Well Known in the Community (paid \$25/hour)

- **Shirley Fuertes** – Local Community Member, Leader of English for Action, Native Spanish Speaker
- **Virginia Morgan** – PTA Lead Parent at William D'Abate Elementary (neighborhood school)
- **WRWC River Ranger Raz**
 - former Clean Water Action canvasser
 - Wearing WRWC Identifying Clothing
 - Work in pairs with another Ranger on same block

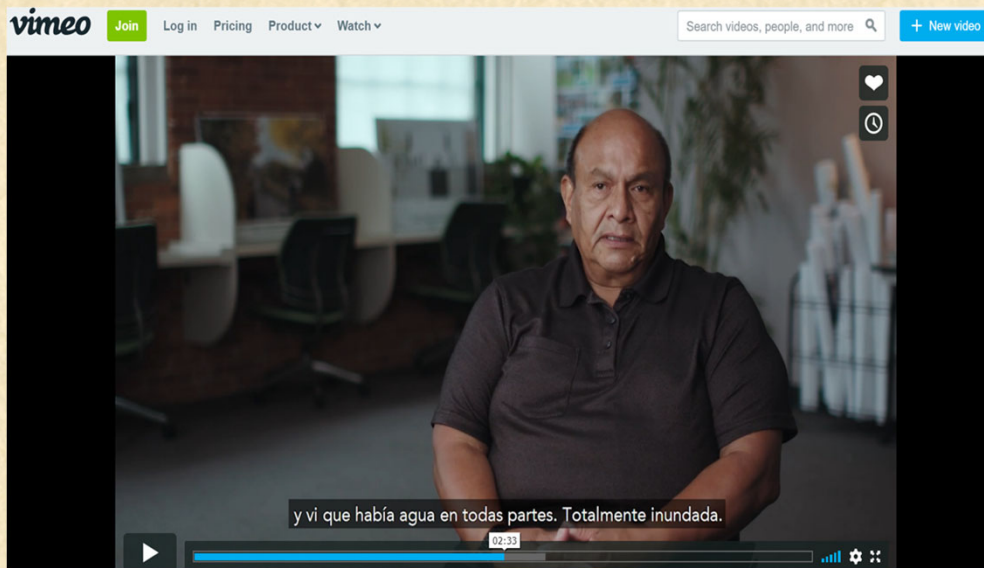


RESULTS

Knowledge/Perceptions on Climate Change

- How much do you know about CC? – 50% little or nothing
- Is climate changing in OV? – 63% Yes, 28% Not Sure, 9% No
- If yes, what risks are there in OV?
 - Major Themes Identified:
 - Flooding
 - More Extreme Weather
 - Illness/Flu/Fever
 - How likely is a disaster here? – 71% somewhat to very likely
 - How severe would the impact be to you? – 75% somewhat to very severe

Are You Ready for the Flood?



https://vimeo.com/359888817/6c75fdddfefbclid=IwAR3jdSAkxodmMOafzGqU1oWUBH9caipose5wYT71G7sGX72OX72crqKx4Wo&mc_cid=92c08db8a6&mc_eid=761d977642

New Voices/Nuevas Voces is Born

Recruitment and program development by resident leaders

Delia Rodriguez-Masjoan



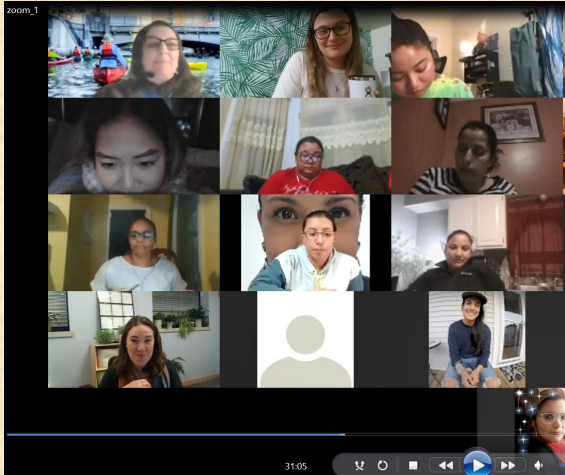
- Longtime community immigration rights advocate
- Immigrant from Argentina
- Radio personality
- Total powerhouse

Jennifer Recinos



- Grew up in Olneyville
- Family is from Zacapa, Guatemala
- WRWC River Ranger
- Current WRWC Board Member

New Voices / Nuevas Voces Learning Cohort (2021)



- 20 cohort members originally recruited
- Compensation (\$25 an hour)
- Translation & Interpretation
- Transportation and Childcare for In-person Activities
- Technology & Digital Content Accessibility (Computers and Wi-Fi)

Learning Between Sessions – Neighborhood Canvassing



Environmental Justice Conversations, but also gathering information on community needs

Learning Between Sessions – Green Infrastructure Tour



Learning about GI as a climate adaptation. WRWC's GI work that people have passed and not known

August Graduation – Mayor Elorza, Office of Sustainability, REJC



16 out of 20 completed the program. Received citations from the Mayor.
Met with Office of Sustainability and Racial and Environmental Justice Committee

End of Year 1 & Next Steps

Transferring Power:

- Two NV Graduates Facilitate 2022 NV Cohort
- NV Graduate Appointed to Represent Olneyville in Providence Human Relations Commission
- Grads Recruited Future Cohorts
- NV Grad is WRWC Environmental Educator
- WRWC Board & Staff Actively Soliciting Membership from NV Grads

Nuevas Voces Co-Facilitators

Maria Jose Gutierrez

- Moved from Bolivia 2021
- Professional nature tour guide and French teacher in Bolivia
- Amazing designer of interactive programming
- Currently learning English but still only fluent in Spanish



Jenny Mercado

- Nicaraguan, lived in RI for over 10 years
- Emergency Room CNA at Hasbro Children's Hospital
- Bilingual
- Mother of twins
- Directing Nicaraguan organization to help new residents find services

Nuevas Voces 2023 – 25 People Enrolled!!!



¿Qué es Nuevas Voces?/ What is New Voices

Misión:

CREAR CONCIENCIA AMBIENTAL PROPORCIONANDO CONOCIMIENTO HISTÓRICO, CIENTÍFICO Y AMBIENTAL DE NUESTRA COMUNIDAD PARA ENTENDER Y TOMAR ACCIONES PARA SU PROTECCIÓN Y CONSERVACIÓN PARA QUE LAS GENERACIONES VENIDERAS PUEDAN SEGUIR DISFRUTANDO DE SU MEDIO AMBIENTE

Objetivos

1. Fomentar la conciencia sobre los problemas ambientales locales.
2. Comodidad para discutir temas ambientales.
3. Construir conexiones comunitarias a largo plazo.
4. Desarrollo de habilidades y oportunidades de liderazgo.

Mission:

CREATE ENVIRONMENTAL AWARENESS BY PROVIDING HISTORICAL, SCIENTIFIC & ENVIRONMENTAL KNOWLEDGE OF OUR COMMUNITY IN ORDER TO UNDERSTAND AND TAKE ACTION FOR ITS PROTECTION AND PRESERVATION SO THAT THE GENERATIONS TO COME CAN CONTINUE TO ENJOY THEIR ENVIRONMENT.

Objectives

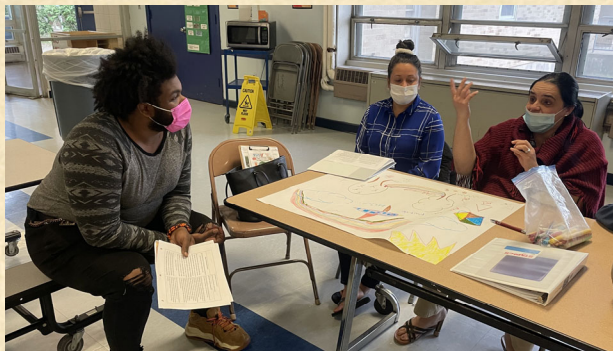
1. Foster consciousness around local environmental issues.
2. Comfortability discussing environmental issues.
3. Build long term community connections.
4. Development leadership skills and opportunities.

NV Program Sessions

Total of 8 Sessions (Monthly)

1. History and identity of the neighborhood, relationship to the river and history of Providence
2. Understand climate change and environmental hazards
3. Emergency Preparedness – Code Red & Emergency Kits
4. Environmental Justice – Meaning, Where we Fit
5. Political System – Meeting our Reps
6. Community Organizing
7. Next Steps for Leaders
8. Graduation

Interactive and Collaborative Pedagogy



Example: Environmental Justice

- Guest speaker REJC
 - Very image-based presentations
- Small group discussion- “Asthma in Community”
- Shareback
- Info on Clinics & Services

Interpreter- translates for English-speaking guests

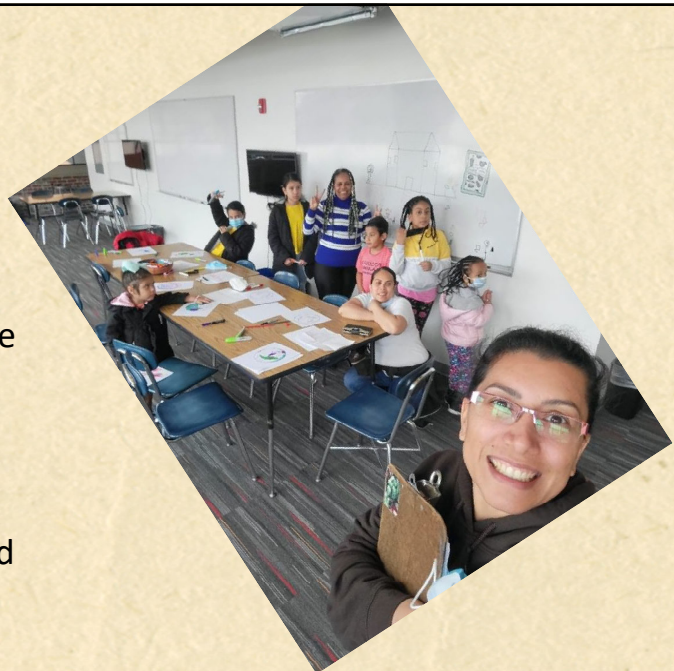
Stipend Payment System

- \$25 an hour stipends
- Payment system needs to be explained clearly!
- Choice between Visa Gift Card and Check
- Sensitivity around documentation status, \$600 tax limit
- Make sure everyone has all the info needed to make their decision!



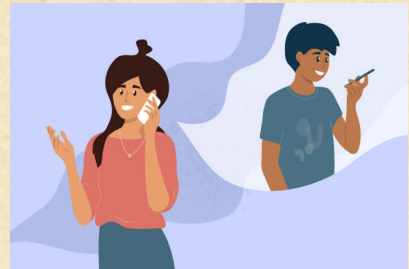
Childcare

- In-person meetings require childcare!
- We put out a call to former NV participants and family members the week prior to every session
- Childcare is compensated at \$25 an hour, through gift card or check stipend system
- Bring art supplies, games, water, and snacks!



Communication

- **WhatsApp, phone calls, and texts are the best way to communicate information to participants**
- **Bilingual paper flyers handed out at in-person events with information about events/opportunities**



Residents/WRWC – Relationship with Environment



Re-establishing living relationships with the environment that have been disrupted because of migration people chose in hopes of a better life

Next Level Programming – Climate Combat Champions/Campeones

- **Develop Climate Mitigation Understanding**
- **Frontline Resident Co-Governance in Siting and Designing Projects to Combat Climate Issues**

Campeones de Combate Climático

Mark Pereira
WRWC Civil Engineer
Presents Overview of
Restoration/Resilience
Projects

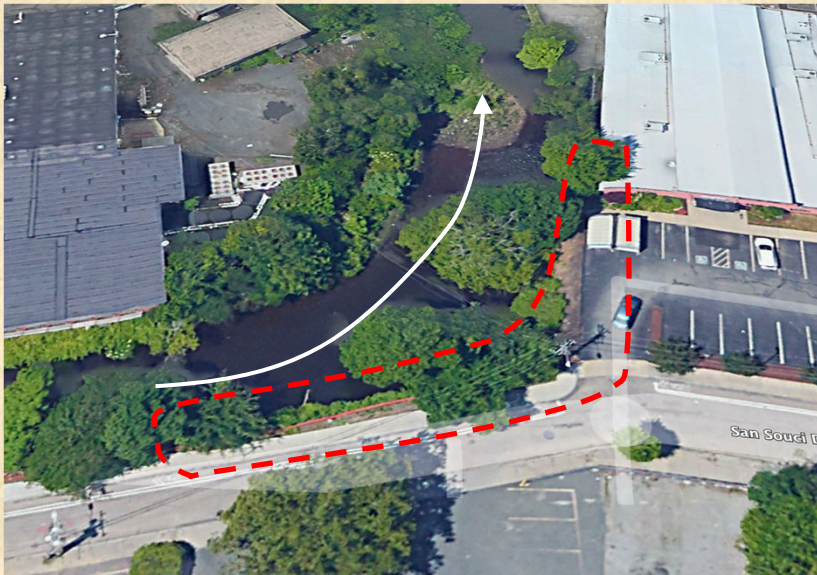
March 8, 2023 Start



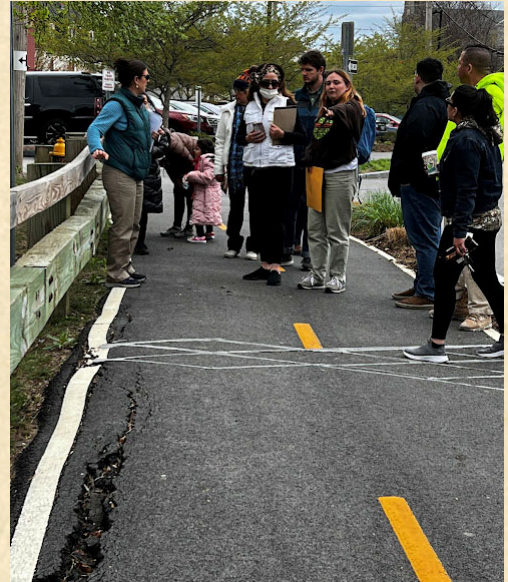
San Souci Drive -Campeones Field Visit Completed Project



San Souci Drive
Providence, RI



Kickoff Meeting Streambank Restoration Project



WOONASQUACKET RIVER
WATERSHED COUNCIL

THANK YOU

Alicia Lehrer – Executive Director WRWC alehrer@wrwc.org

Jenny Mercado – Nuevas Voces Co-Facilitator nuevasvoces@wrwc.org





MILWAUKEE WATER COMMONS

EPA Watershed Academy: Branch Out Milwaukee



Environmental Justice and Watershed Management

Joe Fitzgerald

Water City Program Manager

May 3rd, 2023



MILWAUKEE WATER COMMONS

Who We Are

Milwaukee Water Commons is a cross-city network that fosters connection, collaboration and broad community leadership on behalf of our waters.



What We Do

We promote stewardship of, equitable access to and shared decision-making for our common waters.

How We Organize



Frameworks

1. Environmental Justice
2. Collective Impact
3. The Commons
4. Community Engagement

How We Organize

1. Community Engagement
2. Jemez Principles



1 BLUE GREEN JOBS
Challenge: Milwaukee has an overall unemployment rate of 6.8% and an unemployment rate for high school grads over twice the rest of the country.
Initiatives: Create an advisory council for growing local blue-green jobs. Develop career pathways for blue-green jobs.
Goal: Milwaukee is a national leader in blue-green jobs.

2 WATER QUALITY
Challenge: Milwaukee has waterways that are neither healthy or sustainable and continues to face brown water and toxic to poor water quality.
Initiatives: Provide and fund research in raising funds and awareness toward infrastructure investments.
Goal: Milwaukee is a national leader in water quality.

3 DRINKING WATER
Challenge: Many people feel it's not safe to drink water from Milwaukee, especially exposing the residents to significant health risks.
Initiatives: Educators, industry, and providers to ensure public safety. Transparency process for handling an emergency of lead pipes.
Goal: Milwaukee has a safe, clean & affordable tap water for all.

4 ARTS & CULTURE
Challenge: Milwaukee, a city of tradition, does not have a significant and significant arts or cultural focus on water.
Initiatives: Increase funding, sponsorship and partners for the arts and water education. Create a visual brand and logo for Milwaukee as a Water City.
Goal: Milwaukee has a significant and significant arts or cultural focus on water.

5 EDUCATION & RECREATION
Challenge: Many Milwaukeeans don't know how to swim and don't use the waterways for recreation. Many Milwaukeeans have never been able to develop a relationship with water.
Initiatives: Develop water curriculum and project-based learning for students. Promote every child in Milwaukee have to swim.
Goal: Every Milwaukeean has meaningful water experiences.

6 GREEN INFRASTRUCTURE
Challenge: There are no requirements for new developments to integrate a green infrastructure requirements plan. Our infrastructure requirements plan, our climate change, Milwaukee may require a behavior plan over the urban building and water quality.
Initiatives: Create a Green Infrastructure Service Center (GIS). Launch a "Green Flood" campaign making green infrastructure the new norm.
Goal: Green infrastructure is a requirement for all new development.

Water City 3.0

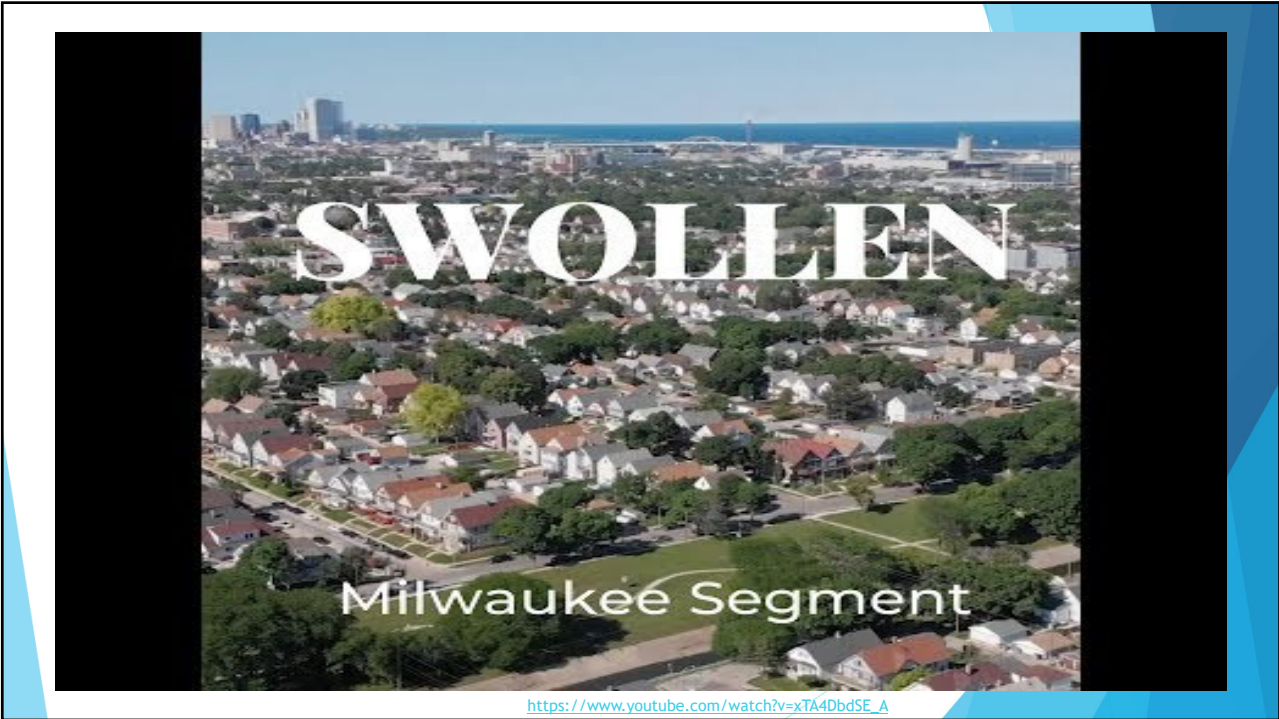
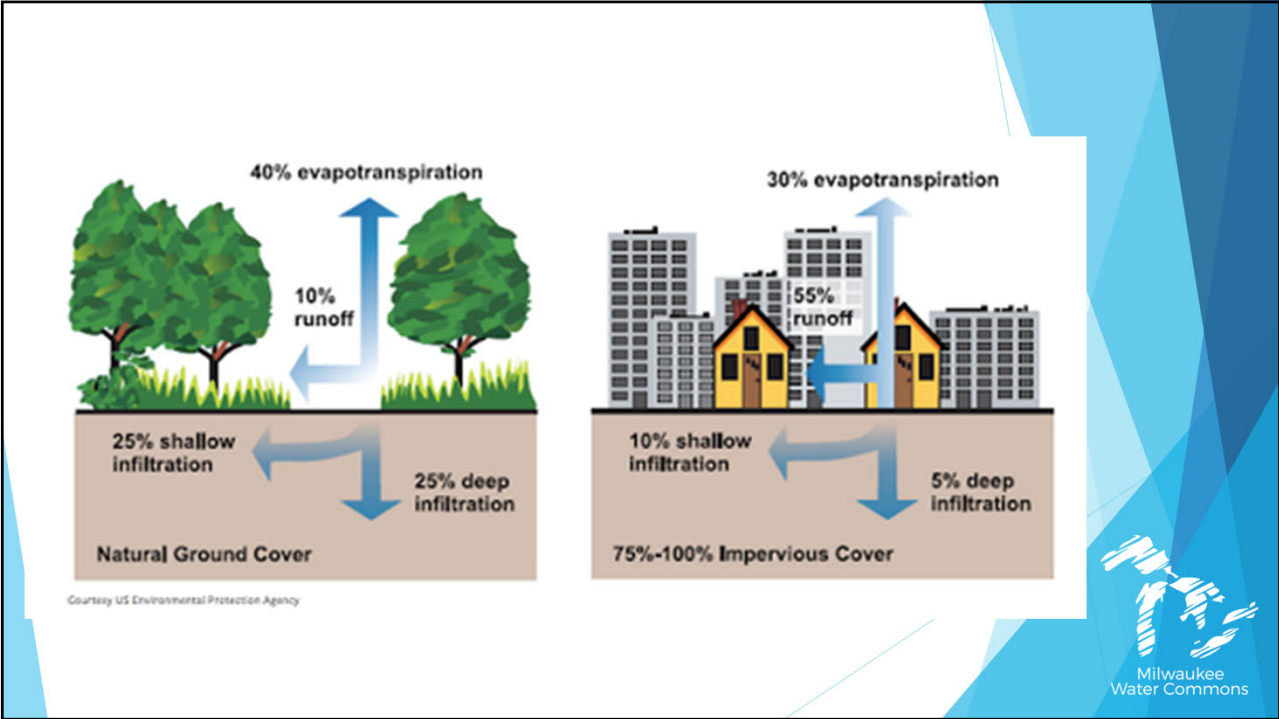
Water City Agenda:

A 10 Year, Community Defined Vision of Milwaukee as a Model Water City

6 Initiatives

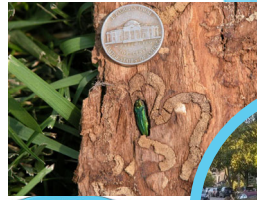
- Blue Green Jobs
- Water Quality
- Drinking Water
- Arts & Culture
- Education & Recreation
- Green Infrastructure





Branch Out Milwaukee Campaign: Benefits of Trees

- ▶ Improvements to **Water Quality**
- ▶ Reduced **flooding and basement backups**
- ▶ Lower temperatures and address **Heat Vulnerability**
- ▶ Improve **Air Quality**
- ▶ Improve **Public Health** by reducing respiratory and cardiovascular disease
- ▶ Fight and protect against **Climate Change**
- ▶ Produce **Cost Savings** and create **Employment Opportunities**



Lindsay Heights Milwaukee - 1937



Lindsay Heights Milwaukee - 1951



Lindsay Heights Milwaukee - 1970



Lindsay Heights Milwaukee - 2020



Three Components of Environmental Justice (Procedural, Distributive, Restorative)

- ▶ **Distributive Justice** - Distributive justice refers to the equitable distribution of resources and opportunities across communities. This may be in regard to the prioritization of planned programs and investments, or even the distribution of employment opportunities.





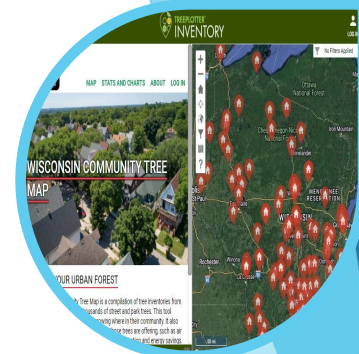
Branch Out Milwaukee

Is a collectively organized campaign to maximize the benefit of Milwaukee's tree canopy by focusing on equity, public health, environmental health, climate resilience, and workforce development.



Identifying Tree Planting Locations

- ▶ **Project Area Selection**
- ▶ **Sherman Park Tree Inventory** - A tree inventory collects information about trees in a specific area including species, size, and health. This information informs management decisions, programming and investments.
- ▶ **Public Tree Planting Event Selection**



Three Components of Environmental Justice (Procedural, Distributive, Restorative)

- ▶ **Procedural Justice** - Procedural justice calls for inclusion of all stakeholders in decision-making, especially those who are impacted by the decisions being made. This means eliminating barriers for engagement, and ensuring that policies and procedures result in fair treatment and equitable access.



Branch Out Milwaukee

1. To grow a sustainable canopy, that will support a healthy community
2. To improve communication and collaboration between diverse stakeholders.
3. To share resources, share power, and share benefits.



Sherman Park Neighborhood Tree Board

- ▶ A community led committee of residents living and working in the Sherman Park Neighborhood who help to guide and inform decisions about trees and green spaces in the Sherman Park Neighborhood



Three Components of Environmental Justice (Procedural, Distributive, Restorative)

- ▶ Restorative Justice- Restorative justice refers to actions that intentionally interrupt past and current harm and empower communities. This includes the need to focus resources on addressing the legacy impacts on communities where there has been long-term marginalization, exclusion, and or oppression.





Branch Out Milwaukee

1. Equitable
2. Sustainable
3. Multi-Dimensional
4. Respectful



Prioritizing Community Benefits

- ▶ **Sherman Park Tree Inventory** - While identifying existing trees, we also identify plantable space, maintenance needs and record stories about each tree
- ▶ **Tree Maintenance** - Sustaining our existing canopy is one of the most impactful ways to protect our watershed and support the needs of residents.
- ▶ **Tree Planting** - Our free tree planting program partners with residents to find the right tree for the right place



Thank you for your interest in this work.
Please stay in touch:



Joe Fitzgerald
Water City Program Manager
jfitzgerald@milwaukeewatercommons.org



www.milwaukeewatercommons.org
1836 W. Fond Du Lac Avenue, Milwaukee, WI 53205
(414)763-6199



m MINNESOTA POLLUTION CONTROL AGENCY



Environmental Justice in Watershed

Helen Waqui— Amy Adrihan - Quinn Carr

2023

Mission: to protect and improve the environment and human health

Vision: MPCA is a national leader in developing services that support healthy people and ecosystems, and a thriving economy

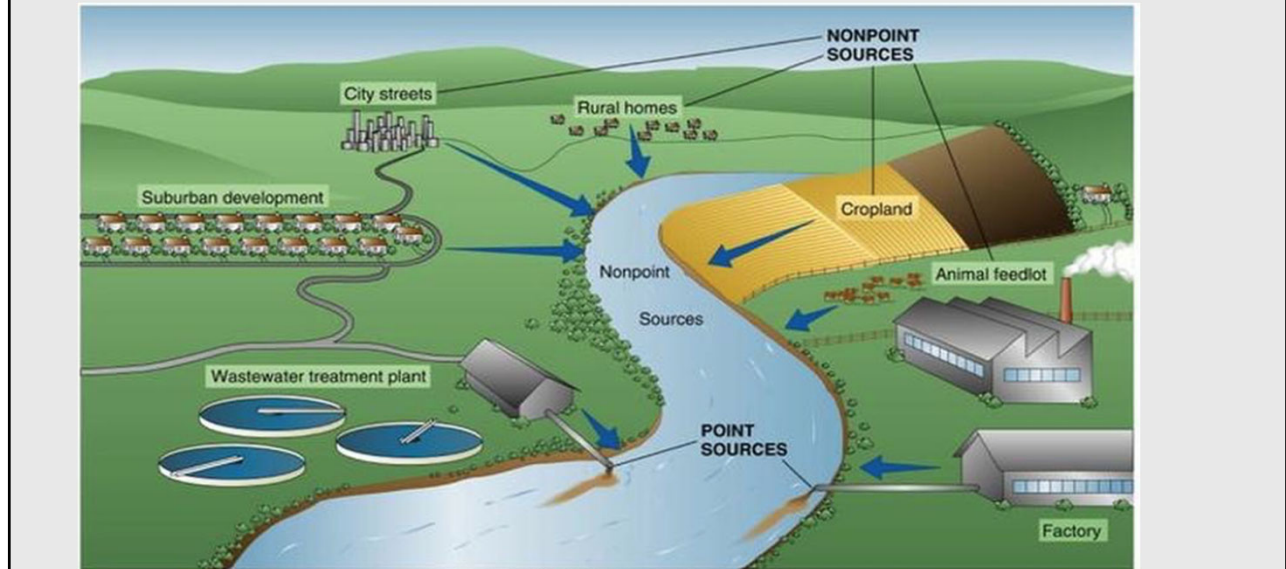


Overview of MPCA approach

- Identify areas where lower-income Minnesotans, people of color and tribal communities may be experiencing more harm
- Change our approach and increase our work in these areas:
 - Better understand sources of pollution and risks
 - Reduce pollution, improve livability
 - Communicate and engage earlier, more often and more effectively
- Integrate environmental justice strategies into MPCA programs

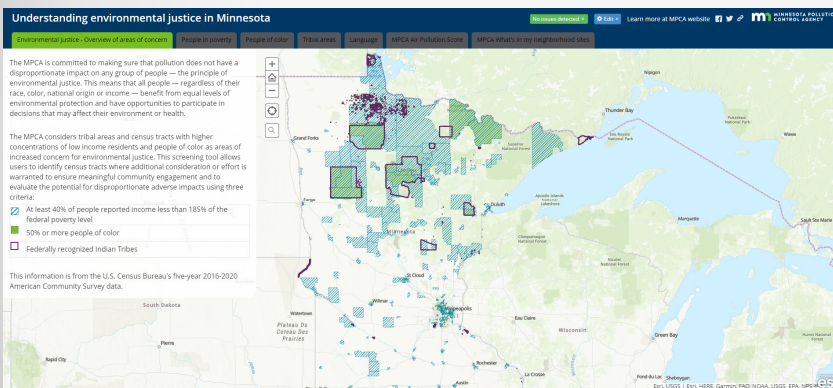


Sources of Pollution



Minnesota environmental justice areas of concern

Main Page of the [Environmental Justice Story Map](#)



Data was updated with 2016-2020 American Community Survey data

- Data is by census tracts
- 5 years of survey data combined
- Ensures as accurate of data as possible while tracts are small enough to understand local communities

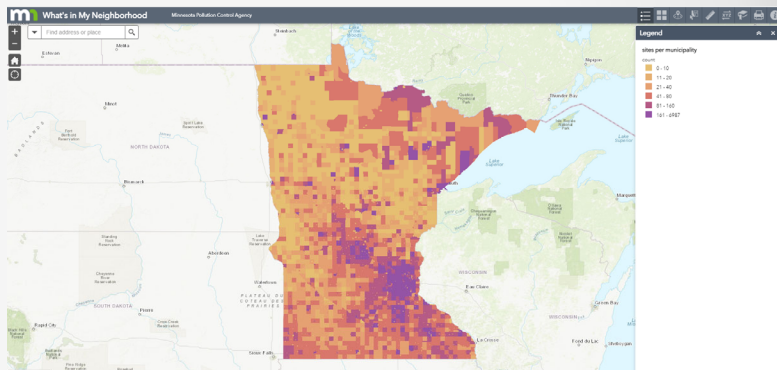
Minnesota areas of environmental justice concern: What's in my Neighborhood

Search tool to find detailed environmental information for communities of interest

- Permits, clean-ups, contaminated properties, air quality, water quality, etc.

It's particularly good for single-facility searches or for smaller geographic areas

What's in My Neighborhood Map Search Interface

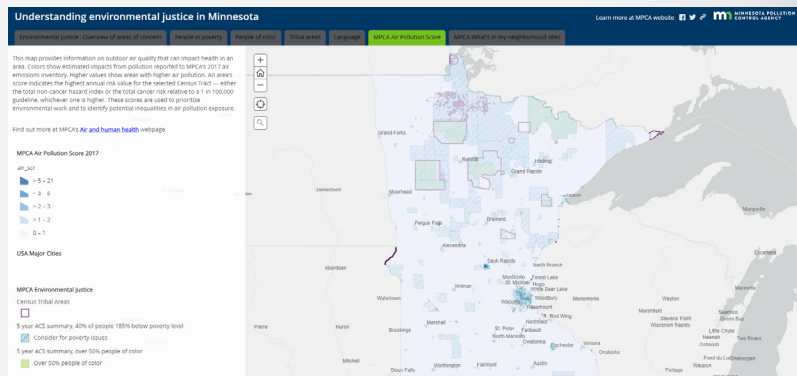


Minnesota areas of environmental justice concern: MPCA Air Pollution Score (MNRISK)

Modeling that estimates levels of air pollution in regions of the state

- Higher scores have greater air pollution risks
- Uses a variety of pollution sources like car traffic, land use, wood burning, facility emissions, etc.

MPCA Air Pollution Score (MNRISK)



Beyond Demographics: Environmental Justice Scoring and Cumulative Impacts

How do we start to connect demographic data and trends related to environmental justice with actual environmental conditions and how pollution impacts broader ecosystem services & human health?

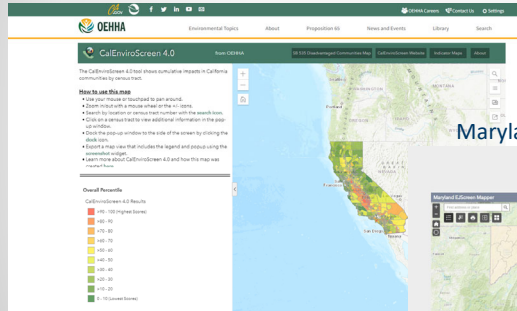
Environmental Justice Scoring Tools

The EPA and several states are creating environmental justice data tools

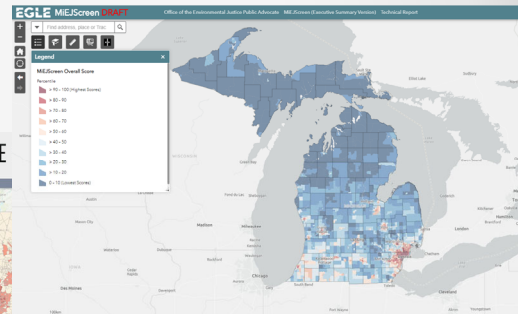
- Incorporates a broader set of information beyond demographics like environmental conditions (impaired waters, solid waste activities, remediation sites, etc.), human health issues (asthma, cardiovascular disease), and direct exposure to pollution (traffic congestion, levels of particulate matter, etc.)
- Most tools result in overall scores for census tracts throughout the given state. The scores are in percentiles so there will always be a range of scores
- Water-specific indicators like impaired waters or pollution discharges into waterways are commonly included in these tools

Environmental Justice Scoring Tools

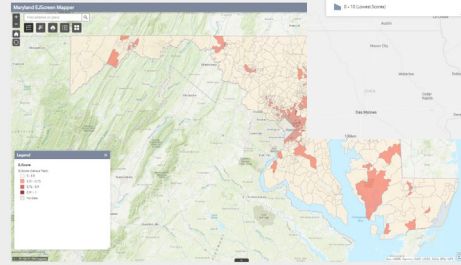
California's CalEnviroScreen Tool



Michigan's EJScreen Tool



Maryland's EJScreen Tool
MD EJSCREEN



Cumulative Impacts

When projects or actions are proposed that might affect pollution levels in an area, communities want to know how it will affect human health when combined with other pollutants and stressors in their community. A full cumulative impact analysis would include all of these elements:

- **Sensitivity:** The magnitude of response to stimuli. People respond differently to pollutants and stressors.
- **Additivity:** Summing impacts across many chemicals, or integrating the effects of multiple chemicals rather than a single-pollutant analysis.
- **Multiple pathways:** Recognizing the many ways people are exposed to pollutants, such as breathing, eating, touching, etc.
- **Multiple sources:** Assessing all sources of pollution, including facilities, background sources, and so on.
- **Non-chemical stressors:** Taking into account non-chemical factors with adverse effects, such as radon (physical), noise (physical), or bacteria (biological).
- **Vulnerability factors:** Historical economic and social marginalization impacts a community's ability to recover and repair. This can be shown through health disparities, economic insecurity, safety fears, and other factors.

Examples of cumulative impact analysis:

- **Cumulative levels and effects analysis** — A requirement for evaluating air permit applications in parts of South Minneapolis.
- **Environmental review** — An information-gathering activity that helps determine a project's potential environmental impacts.

Takeaways from Environmental Justice Data and Tools

- Data is an important aspect of this work, and it helps guide and prioritize our environmental justice efforts
- Often times, these data tools are initial ways to prioritize and evaluate where we need to engage. However, **data alone cannot lead to meaningful engagement and 'on the ground' work** in communities

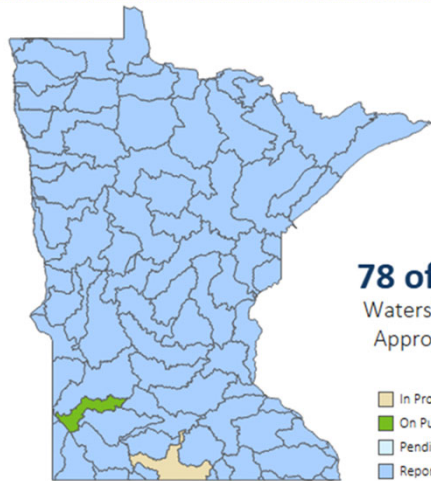
Minnesota Watershed Management Framework



Watershed Restoration and Protection Strategies (WRAPS)

Minnesota Watershed Management Framework

Welcome to the MPCA WRAPS Tracking Dashboard



WRAPS and EJ

Watershed Division specific goals for incorporating EJ considerations into WRAPS include:

1. Efforts to engage with communities of EJ concern are made, and
2. The WRAPS process lays the groundwork to prompt the One Watershed, One Plan (1W1P) effort to engage on the **water quality issues** that affect communities of EJ concern.

As with other work in the WRAPS process, the nature of EJ work will vary as widely as the context and conditions vary from watershed to watershed. The intent of this guidance is to serve as a baseline for discussions to begin and ideas to be generated. There is no universal answer to how incorporating EJ considerations in WRAPS will look like across all watersheds.

WRAPS and EJ

Steps:

1. Identify (use tools and checklist)
2. Reach out
3. **Listen**
4. Develop Goals
 - a. Determine with your team and supervisor what is the correct and reasonable path
 - b. There are minimum expectations, but there is no one right answer.
5. Document your efforts and results- summarize in appropriate reports- (WRAPS Update, TMDL, etc.)

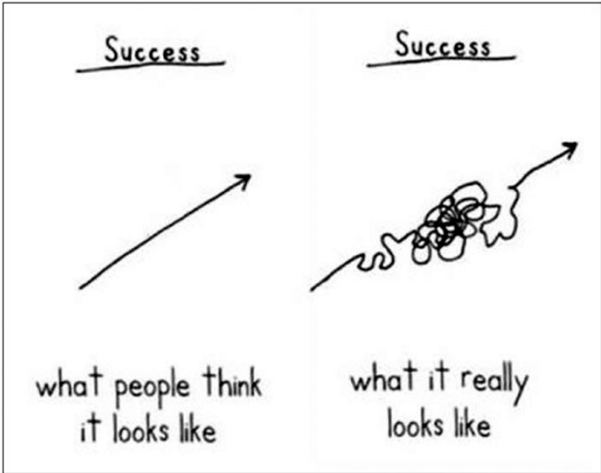
WRAPS and EJ

Each watershed is at a different place in its work, and it's never too early or late to start this process, as it is ongoing and iterative, and will be incorporated in future work in that watershed.

It's recognized that each watershed (and project manager) could be starting from a different point of progress and understanding, and therefore the goals should be developed with that in mind.

Most important thing is to build relationships, listen and understand what water quality issues are affecting communities of EJ concern. Go in with an open mind ready to learn, and not with predetermined solutions.

Take Away



(Babs Rangaiah)

- Early Outreach
- Diverse/Aware Workforce
- Resources
- Accountability
Transparency
- Takes Time



Participation Certificate

- If you would like to obtain a participation certificate you can access the PDF in the **Handouts** section of your control panel.

Watershed Academy Webcasts

More webcasts coming soon!

The slides from today's presentations are posted on the Watershed Academy webpage.

A recording of the webcast will be posted within the next month.

www.epa.gov/watershedacademy

Contact Information

- **Monica Woodruff**, University of West Florida
 - mw19326@gmail.com
- **Alicia Lehrer**, Woonasquatucket River Watershed Council
 - alehrer@wrwc.org
- **Jenny Mercado**, Woonasquatucket River Watershed Council
 - nuevasvoces@wrwc.org
- **Kwame Owusu Daaku**, University of West Florida
 - kowusudaaku@uwf.edu
- **Joe Fitzgerald**, Milwaukee Water Commons
 - jfitzgerald@milwaukeewatercommons.org
- **Amy Adrihan**, Minnesota Pollution Control Agency
 - amy.adrihan@state.mn.us
- **Quinn Carr**, Minnesota Pollution Control Agency
 - quinn.carr@state.mn.us
- **Helen Waquiu**, Minnesota Pollution Control Agency
 - helen.waquiu@state.mn.us

Thank You!