

East Palestine

TRAIN DERAILMENT RESPONSE

Serving East Palestine, Negley, Darlington and surrounding communities

NEWSLETTER

June 27, 2023



Assessing excavated area underneath Pleasant Drive

PROGRESS MADE

Contamination Removed Underneath Train Tracks

The excavation underneath Pleasant Drive is complete and starting Wednesday, June 28, the street will be open to traffic. Contamination underneath the north and south tracks has been removed, and both tracks are both fully operational. The removal of the excavated waste for disposal off-site is ongoing. Sampling and removal work continues at the railcar scrapping areas alongside the tracks.

Assessments of Sulphur Run and Leslie Run

Sulphur Run flushing and assessment are ongoing to determine the most effective and least disruptive cleaning methods to ensure contamination is removed. In Leslie Run, assessment is being planned to determine what potential further removal actions are needed.

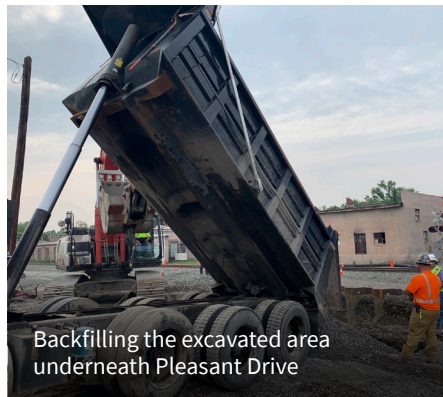
NTSB Public Meeting and Public Hearing

Last week, the National Transportation Safety Board (NTSB), which is a federal agency

that performs independent safety investigations, arrived in East Palestine for a public meeting and two days of investigative hearings. The hearing was a fact-finding step as part of a safety investigation to determine the probable cause of the Norfolk Southern train derailment, hazardous materials release, decision to vent and burn, and to gather more information for recommending safety changes to prevent future derailments and releases. For more information, you can visit the NTSB website: [ntsb.gov/news/events/Pages/East-Palestine-Hearing-Event.aspx](https://www.ntsb.gov/news/events/Pages/East-Palestine-Hearing-Event.aspx)



Removal efforts in the north ditch alongside the tracks



Backfilling the excavated area underneath Pleasant Drive



Rail work at the site

A LOOK AHEAD

AT THE SITE

- The site operations will be reduced around the 4th of July holiday, check EPA's website for updates.
- The site operations footprint will continue to change as sampling and cleaning efforts move to other areas of the site. Site cleanup will focus on car scrapping areas.
- Cleaning in the catch basin area near Martin Street will continue. A culvert is being installed beneath Pleasant Drive north of the tracks.
- Truck traffic continues near the derailment site. Waste shipments will continue.
- Taggart Street remains closed to the public.

IN THE GREATER COMMUNITY

- EPA air monitoring continues at 15 locations around town.
- Leslie Run assessment is being planned and Sulphur Run flushing and assessment are ongoing to determine next steps in cleaning both streams. Workers are finding aquatic life throughout, but we recommend avoiding these creeks as additional cleaning is needed.
- The EPA Community Welcome Center at 25 North Market Street in East Palestine, remains open to the public Monday through Friday from 8 a.m. to 8 p.m. and Saturday from 10 a.m. to 4 p.m. The Welcome Center will be closed Tuesday, July 4 in observation of Independence Day.

TOP 3 QUESTIONS OF THE WEEK

01 I have heard about research being conducted by the University of Kentucky. What is the health tracking survey?

University of Kentucky College of Public Health researcher Dr. Erin N. Haynes and her team received a grant from the National Institutes of Health (NIH) to conduct a long-term health study with and for the residents of East Palestine and the surrounding area. The first step is to learn more about the experiences, health symptoms, and environmental health concerns from residents in the impacted area of the train derailment. Anyone 18 or older who lives in Columbiana, Mahoning, Stark, Carroll or Jefferson Counties in Ohio and residents of Beaver and Lawrence Counties in Pennsylvania and Hancock County in West Virginia are eligible to participate in the brief online survey. The survey asks questions about experiences during the evacuation, and concerns about exposures and symptoms, including stress. uknow.uky.edu/research/uk-researcher-launching-health-tracking-survey-east-palestine

02 Columbiana County Health District has sampled my private well, will it be sampled again?

Residents will be contacted if they are within the priority zones and have signed up for private well sampling. Within 60 days after the first sample, private wells are resampled, and residents will be contacted to schedule resampling. Residents within one of the four priority zones can also schedule a first-round sample by calling 330-849-3919. Pennsylvania residents living within two miles of the derailment site can still request private well sampling by calling 412-442-4000.

03 Does the East Palestine clinic require an appointment, or can people just show up without an appointment if they require immediate medical care?

An appointment is preferred, but if they can, they will accommodate walk-in patients. If they believe it's an emergency, they should go to the emergency room or urgent care for medical attention.

SITE STATUS CHECK

As of June 23



NORTH TRACK:

In operation

SOUTH TRACK:

In operation



LESLIE RUN:

Assessment is being planned

SULPHUR RUN:

Flushing and assessment are ongoing

21.8 million

est. gallons of wastewater shipped offsite



73,762

est. tons of solid waste shipped offsite



(330) 775-6517



R5_eastpalestine@epa.gov



epa.gov/east-palestine-oh-train-derailment



Public Health Resources



Ohio

East Palestine Permanent Clinic

Phone: (330) 383-6020

Address: 139 N. Walnut, East Palestine, OH 44413
Hours: Monday thru Friday, 9am-5pm

- Free for those without insurance
- Primary care services include screening tests as they relate to the train derailment, mental health care, preventative care
- May include on-staff specialists and referrals to other specialists



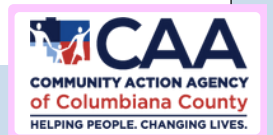
Community

Action Agency of Columbiana County

Phone: (330) 424-7221

The CAA Mobile Unit will offer:

- **On Mondays:** medical services (call 330-424-5686 to schedule)
 - Includes primary care, physicals, health checks/ well child exams, treatment for chronic illnesses, sick visits, health education, lab services
- **On Wednesdays:** behavioral health services (call 330-386-7870 to schedule)



Columbiana County Mental Health & Recovery Services Board

Phone: (330) 424-0195

Crisis Hotline: (330) 424-7767
Crisis Text Line: Text 4HOPE to 741741

- Provides treatment and support for mental health & substance use problems for all ages
- Services include: 24-hr crisis hotline, community-based care, affordable home-based services for children with emotional disabilities



Columbiana County Health District

Phone: (330) 424-0272

Website: www.columbiana-health.org - lists additional resources

Hours: Monday thru Friday, 8am to 4pm

Address: 7360 OH-45, Lisbon, OH 44432

- Most health services are reduced-cost or free of charge for Columbiana County residents
- Residents near East Palestine with drinking water wells can request private sampling by calling 330-849-3919.



Pennsylvania



PA Dept. of Health hotline:
(877) PA-HEALTH / (877)-724-3258

- Provides check-ups to help identify the root of health concerns
- Links residents to local health care services, including physical & behavioral health care providers from Allegheny Health Network, Heritage Valley Health System, UPMC and Primary Health Network

PA Support & Referral Helpline:
(855)-284-2494 (TTY: 724-631-5600)

- Connects Pennsylvanians with mental and emotional support and to local resources

Beaver County Behavioral Health Services: 724-371-8060 or 1-800-400-6180

Poison Control Center incident hotline: 1-877-603-0170

PA DOH environmental health concern:
env.health.concern@pa.gov



(330) 775-6517



R5_eastpalestine@epa.gov



epa.gov/east-palestine-oh-train-derailment

IN CASE YOU MISSED IT

On June 20, The Way Station and First United Presbyterian Church hosted a Public Health Resource information session. East Liverpool Hospital, the Community Action Agency of Columbiana County, Columbiana County Mental Health and Recovery Services Board, and OhioMeansJobs presented on health resources and services available for residents.

Key resources were discussed during this session. To watch the recording check out the “Videos and Photos” section of EPA’s website: epa.gov/east-palestine-oh-train-derailment/videos-and-photos



DISTRIBUTION UPDATE

These newsletters will be changing from a weekly to bi-weekly schedule starting in July. Expect to receive the next editions on July 12 and 26.

ABOUT THIS PUBLICATION

This newsletter is developed through a joint effort of state and federal agencies and community organizations. If you would like more information about topics discussed, please visit: epa.gov/east-palestine-oh-train-derailment or call EPA’s Information Line at **330-775-6517**



SCAN ME for a list of additional resources