

East Palestine

TRAIN DERAILMENT RESPONSE

Serving East Palestine, Negley, Darlington and surrounding communities

NEWSLETTER

July 11, 2023



DustTrak air monitors continue to monitor particulate matter near the derailment site

PROGRESS MADE

Surface and Ground Water Sampling Plans Approved

Surface water and groundwater sampling plans have been approved by EPA. These plans ensure surface water and groundwater are sampled and monitored for the remainder of the cleanup. The plans also include protocols for any changes in water quality. Surface water sampling takes place in nearby water bodies, including Sulphur Run, Leslie Run,

Bull Creek, Little Beaver Creek, and the Ohio River.

Paving at the Turnaround on East Martin Street

On July 8, gravel was laid on the turnaround on East Martin Street past Pleasant Drive in preparation for asphalt to help control erosion and dust. Depending on the weather, temporary asphalt will be laid on top of the gravel this week.

Updated Stormwater Management

A site stormwater inspection was completed on July 8, and additional stormwater controls were put in place to improve the existing stormwater management plan. Going forward, weekly stormwater inspections will determine if and when additional controls are needed.



Freshly laid asphalt is steamrolled on Martin Street

A LOOK AHEAD

AT THE SITE

- Paving on Pleasant Drive and Martin Street will continue this week.
- Some additional sheet piling installation is planned near Car Scrapping Area 4, east of the CeramFab facility.
- Shallow soil excavation of contaminated material continues in Car Scrapping Area 3, just north of the tracks.
- Truck traffic continues near the derailment site. Waste shipments will continue.
- Taggart Street remains closed to the public.

IN THE GREATER COMMUNITY

- EPA air monitoring continues at 15 locations around town.
- Crews are evaluating and reducing stormwater runoff to Sulphur Run.
- Stream assessments of Sulphur Run and Leslie Run are continuing, with sediment flushing in Sulphur Run.



Two tankers are simultaneously loaded with liquid waste.



Plastic curtains are placed downstream in Sulphur Run to capture sediments and sheen released during stream washing

COMMUNITY CORNER

GOLF: The Annika Fore East Palestine Golf Outing attracted world class talent and hundreds of volunteers. It was announced last week that the event raised \$400,000 to be distributed to the East Palestine community. Some of the recipients of the money include Little Bulldogs Football & Cheerleading, the East Palestine Youth Sports Association, and the East Palestine Teachers Union. Any remaining funds will be donated to The Way Station.



Source: Enon Valley Community Historical Society

ENON VALLEY: On Saturday, July 15, Enon Valley will host its annual Community Day and Bluegrass Festival. This free, family-friendly event starts at 7 a.m. with breakfast at the Masonic Lodge and goes out with a bang at 10 p.m. with fireworks. Don't worry, there are lots of kids' activities, live music, swing dancing, vendors, and historical programs to enjoy in between. EPA will have a table with button making, so don't forget to stop by and say hi!

DID YOU KNOW?

Groundwater in East Palestine is tested weekly for volatile organic compounds (VOCs), semi-volatile organic compounds (SVOCs), and glycols using 14 "sentinel" monitoring wells, which are groundwater wells installed between a known area of contamination and a drinking water supply. These wells are important because they can detect the presence of potentially harmful compounds before they reach the drinking water supply.

Each week, Ohio EPA collects samples of East Palestine's drinking water. Water is tested for 190 chemicals, including VOCs and SVOCs. At this time, no chemicals associated with the derailment have been detected in either raw or treated water. The East Palestine drinking water plant conducts daily checks to make sure all treatment systems are operating properly. Private drinking water wells have also been extensively tested with 746 samples collected so far in Ohio and Pennsylvania.

TOP 3 QUESTIONS OF THE WEEK

This week's questions are answered by **Dr. Gretchen Nickell, Chief Medical Officer of the East Liverpool City Hospital, and doctor at the East Palestine Health Clinic.**

01 What kind of screening does the East Liverpool City Hospital's East Palestine Clinic offer related to the train derailment?

The screening tests are based on recommendations by specialists in toxicology to monitor anyone exposed to substances from the train derailment. The tests include urine and blood tests. A urinalysis is done that looks for problems involving the kidneys. The blood tests include a complete blood count (CBC) and a comprehensive metabolic panel (CMP). The CBC looks at the white blood cells, red blood cells and the platelets. The CMP looks for problems with electrolytes, the kidneys and the liver.

02 How often should these screening tests be done?

We recommend having these tests every 6 months for the first year and then every year after that. This will allow the doctor or other healthcare provider to monitor changes in your health.

03 Are any other tests ordered?

There may be based on the evaluation by the physician or other healthcare provider. If a patient is having specific symptoms there may be other tests needed. For example, if a patient is short of breath, they may need to have a chest x-ray or other tests done to evaluate their lungs.

SITE STATUS CHECK As of July 11



NORTH TRACK:
In operation
SOUTH TRACK:
In operation



LESLIE RUN:
Stream monitoring is ongoing
SULPHUR RUN:
Stream monitoring and washing is ongoing

24.3 million

est. gallons of wastewater shipped offsite



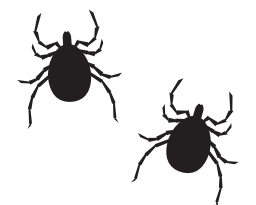
78,709

est. tons of solid waste shipped offsite



SAFETY MINUTE | Ticks

There are about a dozen species of ticks in Eastern Ohio and Western Pennsylvania. Three species, the American dog tick, the blacklegged tick, and the lone star tick, are among the most likely to be encountered by people or pets. All three of these species can carry tickborne diseases. The best way to prevent a disease is to prevent a bite. Take action to decrease your risk of infection: wear repellent, check your body daily for ticks, and limit your exposure to tick habitats.



(330) 775-6517



R5_eastpalestine@epa.gov



epa.gov/east-palestine-oh-train-derailment



(330) 775-6517



R5_eastpalestine@epa.gov



epa.gov/east-palestine-oh-train-derailment

ANNOUNCEMENTS

The EPA Community Welcome Center at 25 N Market St. hours have changed to 9 a.m. to 6 p.m. Monday through Friday. The center will continue to be open on Saturday 10 a.m. to 4 p.m. and closed on Sunday.

On July 20, The Way Station and First United Presbyterian Church will host a site progress session from 6 to 7 p.m. Representatives from EPA will discuss site operations over the past few months and what sampling, assessments, and work is upcoming. This session will be held at 109 West Rebecca Street in East Palestine.

STAY INFORMED

Check out our series of “In the Moment” videos that give you a backstage look into everything from our mobile laboratory to how we decontaminate trucks. And if you want something more in depth, recordings of all public information sessions as well as videos answering some frequently asked questions are also available.

Scan the QR code!

Follow the EPA Great Lakes Facebook and Twitter pages for social media updates on the ongoing cleanup and other EPA activities in your region.



ABOUT THIS PUBLICATION

This newsletter is developed through a joint effort of state and federal agencies and community organizations. If you would like more information about topics discussed, please visit: epa.gov/east-palestine-oh-train-derailment or call EPA’s Information Line at **330-775-6517**



SCAN ME for a list of additional resources

EPA Welcome Center - EPTD
25 N. Market St.
East Palestine, OH 44413