

Source: U.S.G.S. Topographic Maps (7.5 Minute) Lansdale PA

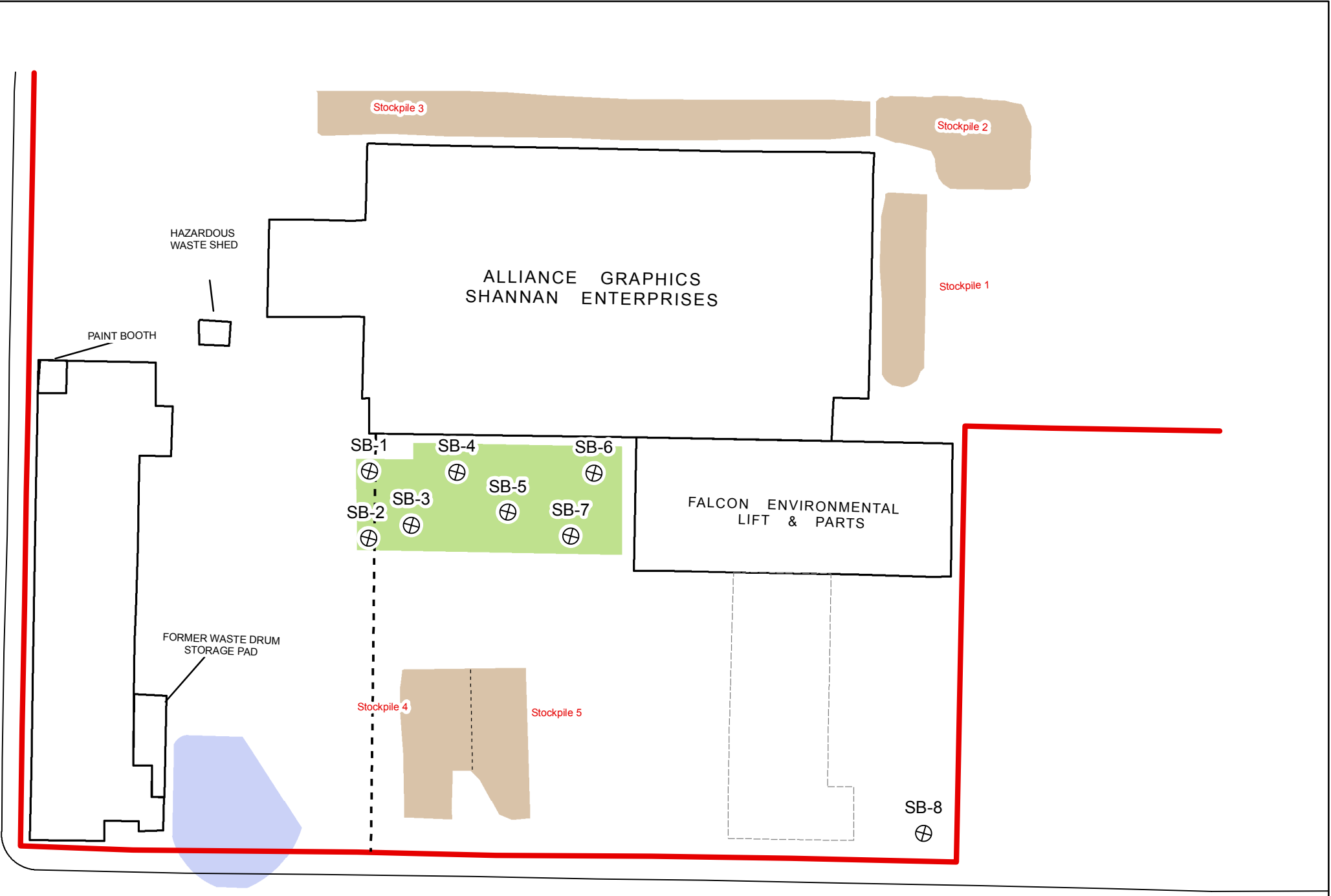
Commonwealth of Pennsylvania
Department of Environmental Protection

Greene, Tweed & Co.
North Wales, PA

Figure 1
Site Location Map

 **TETRA TECH FW, INC.**
Formerly Foster Wheeler Environmental Corporation

CENTER STREET

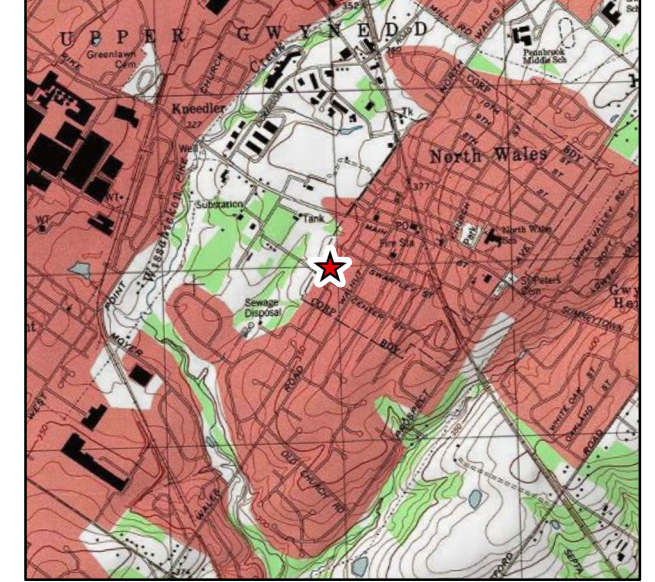


ELM AVENUE

Legend

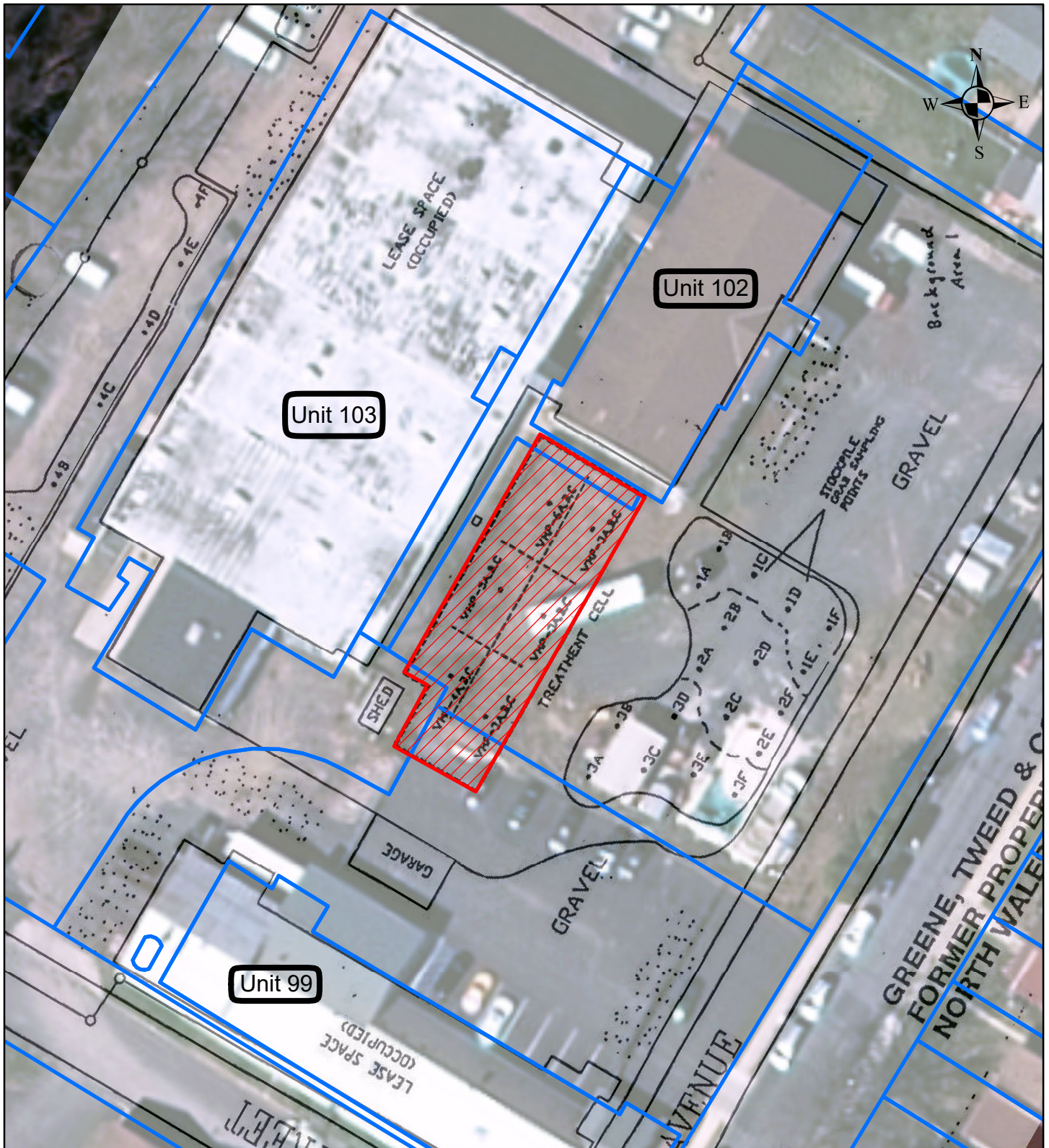
- ⊗ Soil Boring
- Property Boundary
- Bioremediation Cell
- Former Excavation
- Former Building (Removed)
- Contaminated Soil Stockpile
- Site Building
- Fence

Site Location





DATA:
 1. Features Digitized From USEPA Map, 1989
 2. ESRI Basemap, USA Topographic, USGS 2013

DRAFTED BY: BSH	SOIL BORING LOCATIONS (approximate locations)		
CHECKED BY:	GTAC GREENE TWEED 320 ELM AVENUE NORTH WALES, PA 19454 40.209082, -75.282476		
REVIEWED BY:			
	176 THORN HILL ROAD, WARRENDALE, PA 15086		
	SCALE	DATE	FIGURE
		7/9/2018	2



Former Greene Tweed & Company, Inc.
320 Elm Ave
North Wales 19454
EPA ID: PAD075504795

Figure 3

-  Treatment_Cell
-  Montgomery County Tax Parcels

