

2022 Platform Panel Discussion on Collaboration

Four panelists will provide short presentations to be followed by a community discussion

- [Jeff Vukovich](#), Physical Scientist, EPA Office of Air Quality Planning and Standards: *Coalition building*
- [Susan McCusker](#), Senior Environmental Engineer, Mid-Atlantic Regional Air Management Association: *Collaboration as a Tool*
- [Tom Moore](#), Planning Director, Regional Air Quality Council: *Communication in the Collaborative effort*
- [Jay Baker](#), Senior Policy Analyst, Western States Air Resources Council: *Applications of the Collaborative Products*



Coalition building through sector-specific Workgroups

Jeff Vukovich
EPA Office of Air Quality and Standards

How to get a broad group of people to come together around a common goal?



“Somehow, we have to piece it all together”

NEED TO MAXIMIZE PARTICIPATION/ENGAGEMENT IN THE GOAL

How to maximize participation across a diverse group of stakeholders?

- **Plan, plan, plan:** MJOs, SLTs, federal agencies and all other agencies/stakeholders have schedules to keep!
- **Chairperson-ship:** Need non-EPA co-chair to provide perspective to the process
- **Flexibility/Patience:** Not all goes according to plan
- **Openness to Learn:** Different methods, characteristics of activity data

How to maximize participation across a diverse group of stakeholders? (cont')

- **Define the Opportunities to participate:**
Activity data, review of data, Workgroup meetings, documentation
- **Efficiency when possible:**
Decisions/Processes may seem challenging at times



Collaboration as a Tool

Susan McCusker
Mid-Atlantic Regional Air Management Association (MARAMA)

Why is a collaborative emissions modeling platform (EMP) development/evaluation process useful for air quality planners?

Different minds, different influences

Need to navigate tension between time and accuracy – how frequent, how many iterations, who determines if and when it's good enough

More consistency across agencies and their subsequent actions

More scientifically rigorous

More agency focus on areas of expertise

More agency focus on efforts that align with needs

More pooling of state agency resources

Best opportunity for states to work with EPA to create the best set of emissions data for SIPs, rulemakings, etc.

How does a collaborative process support SIPs and planning?

“promotes information sharing, which leads to more complete SIPs and fewer problems getting addressed multiple times”

“results in a more robust EMP and by extension rigorous and defensible SIPs”

“creates the foundation for the best available data set for AQM for SIP demonstrations and federal rulemaking”

“ensures that each state SIP, especially attainment demos, are comparable. Also provides states, which have limited resources, access to an EMP”



MARAMA

Mid Atlantic Regional Air Management Association, Inc.

Thinking about the set of tools and resources available to planners for addressing the air quality goals of their agency, how does a collaborative EMP process add value to their practice?

Agencies can target (often limited) resources

- Staff expertise
- Agency needs/goals

Agencies have access to a modeling platform

- More robust, defensible and approvable SIPs
- Limited resources to participate outside the regular inventory requirement cycle (i.e., NEI)

Agencies share knowledge and experience

- Increases value for all



MARAMA

Mid-Atlantic Regional Air Management Association, Inc.

Communication in the Collaborative Effort

Tom Moore
Regional Air Quality Council

About the Denver Area's Regional Air Quality Council

Regional Air Quality Council

For more information
see: <https://raqc.org/>

Mission:

We collaborate to improve air quality and protect Colorado's health, environment, and economy through planning, policy development and program implementation.

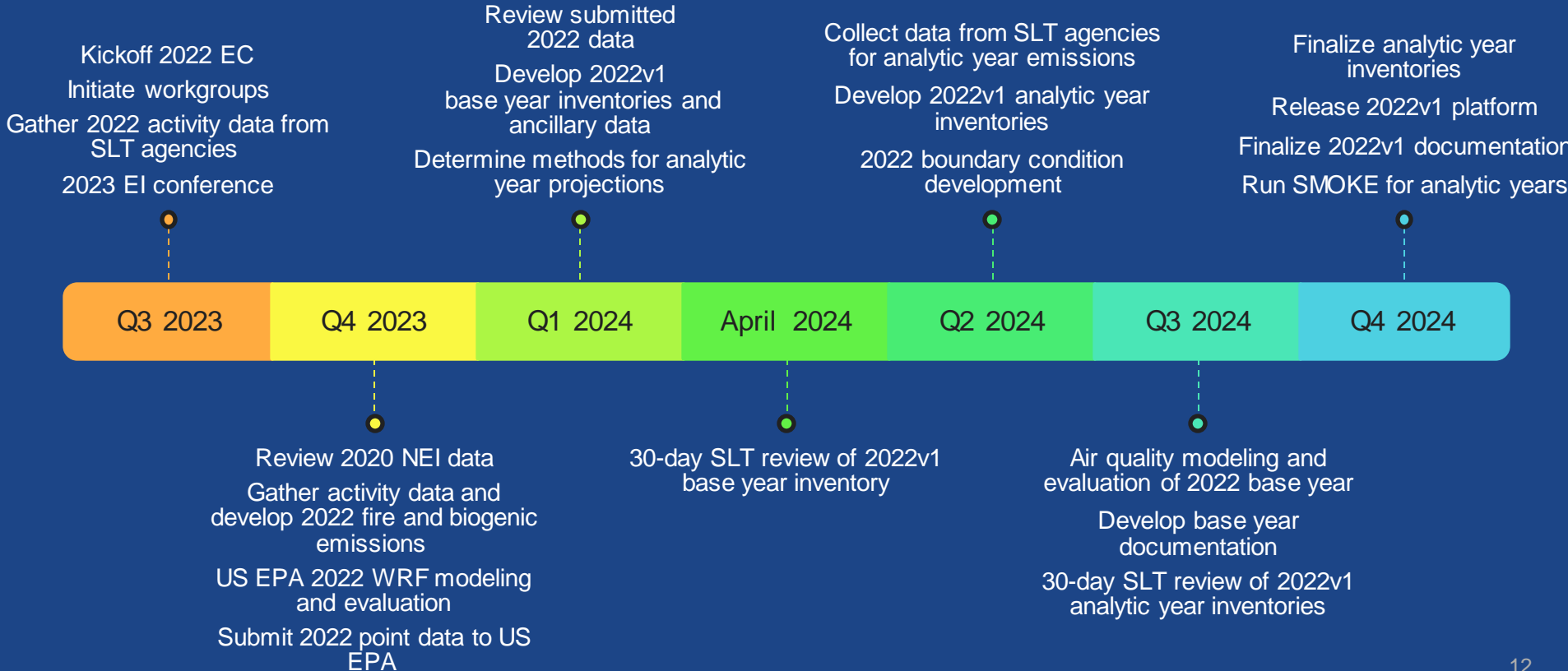
Vision:

Clean air provides us the opportunity to breathe easy.

Donate:

The RAQC Clean Air Fund, a 501(c)(3) public charity, is dedicated to funding, and supplementing RAQC air quality programs that reduce Ozone within the EPA's Denver Metro/Front Range Ozone Non-Attainment Area.

Timeline for 2022v1 Platform Development





2022 EMISSIONS COLLABORATIVE: PRODUCT APPLICATIONS

Seattle, Washington
September 27, 2023

Modeling Platform

NAAQS
Regional
Haze
Planning

Smoke and
Ozone
Transport

Scenario
Modeling

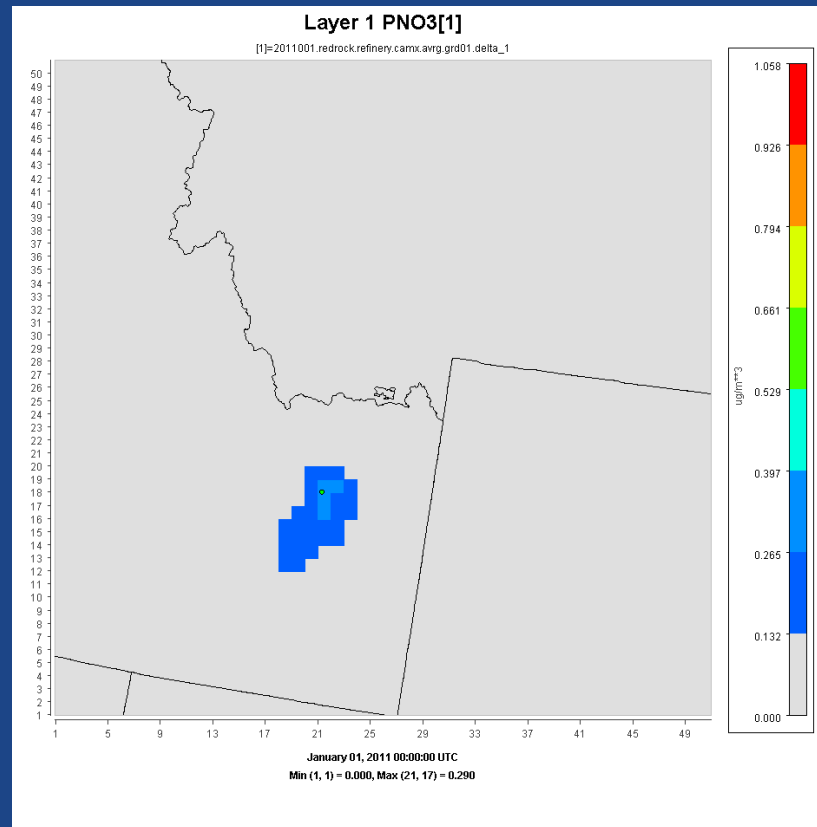
Scenario Modeling

CAMx for desktop

Create small domains with boundary conditions based on national CAMx runs

Requires less computing power

Test different control strategies/scenarios



For questions about CAMx for desktop, contact [Tim Allen](#), USFWS or [Rhonda Payne](#), WRAP

Connections

- Collaboration allows for better, collective QA
- More efficient collaboration
- Easier to refine future inventories

Documentation

- Needs to be robust so that changes in control scenarios are easily understood (e.g., what happens when we change O&G or EGU emissions)

Experience

- Gives SLTs a chance to better understand how and why EPA creates inventory projections
- Insight, especially for smaller agencies and for NEI years

Thank you!

Jay Baker, Senior Policy Analyst

WESTAR

jbaker@westar.org

435-757-9868

Community Discussion

- The floor is open to the audience to ask panelists and Coordination Committee members questions about the Collaborative process

