

# Quivira Mine On-Site Cleanup Alternative Fact Sheet

U.S. Environmental Protection Agency • Region 9 • San Francisco • CA • February 2023

The U.S. Environmental Protection Agency (EPA) and Navajo Nation EPA (NNEPA) are asking for your feedback on the on-site disposal alternative that is being considered for the Quivira Mines. This fact sheet provides background on the mines and an overview of the current cleanup alternative being considered. EPA would like the community's input of the repository locations shown on Figure 1.

## What is On-Site Disposal?

- This alternative is to dig up and move waste away from current location and the community.
- Place in a repository contoured to match surrounding landscape. This alternative will restore the site - backfill with clean soil and regrade. An Evapotranspiration Cover (ET Cover) will be placed over the waste.
- Native vegetation will be planted at CR-1, CR-1E, and on the ET Cover.
- The area will be protected with rangeland type fence until vegetation is established.
- The final Land Uses at CR-1 and CR-1E will be:
  - Navajo managed uses on cover (grazing, open space)
  - No homes on cap

## What are the Current Considerations About On-Site Disposal?

- The ET Cover is protective and is being proposed at these types of sites throughout Navajo and has been used effectively on sites throughout the southwest.
- ET cover will be checked by EPA every year and fixed when needed.
- This will be the fastest action to implement, taking approximately 1-2 years to start construction. Construction will probably take 2-4 years.
- Off-site disposal is estimated to take 8 to 15 years or more to complete.
- This alternative allows this construction and Northeast Churchrock (NECR) construction to happen at the same time.
- This will prevent 70,000 trucks of waste driving on highways between Quivira and off-site disposal areas.
- This alternative prevents highway traffic accidents.
- This alternative will use much less water than off-site disposal because construction does not take as long.
- ET covers are designed to isolate the waste and prevents the release of concentrated radon.
- Community members would be able to return home sooner than off-site disposal alternatives.

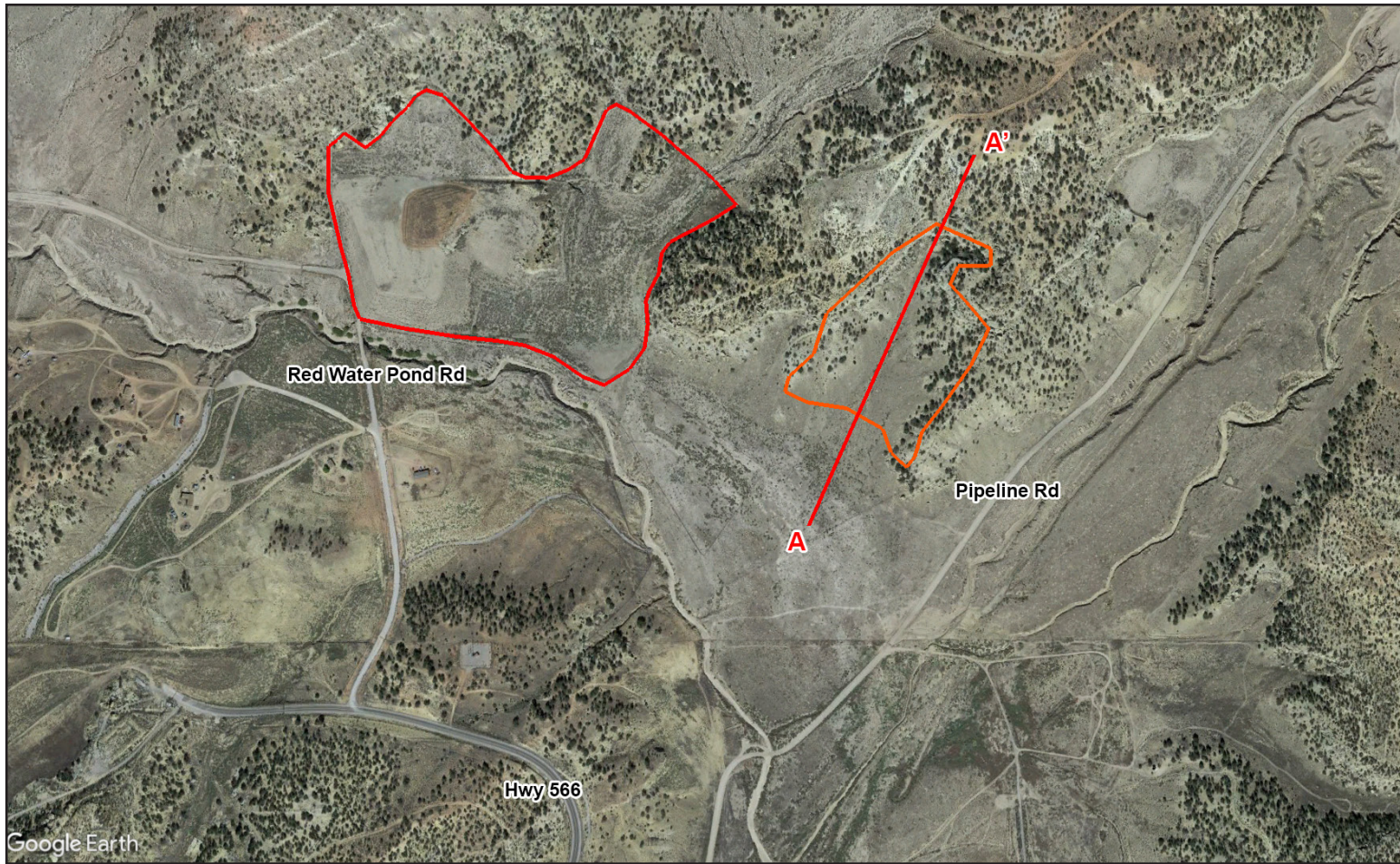
## For More Information

**Brandon Nichalson**  
U.S. EPA Remedial Project Manager  
(415) 914-4212  
[nichalson.brandon@epa.gov](mailto:nichalson.brandon@epa.gov)

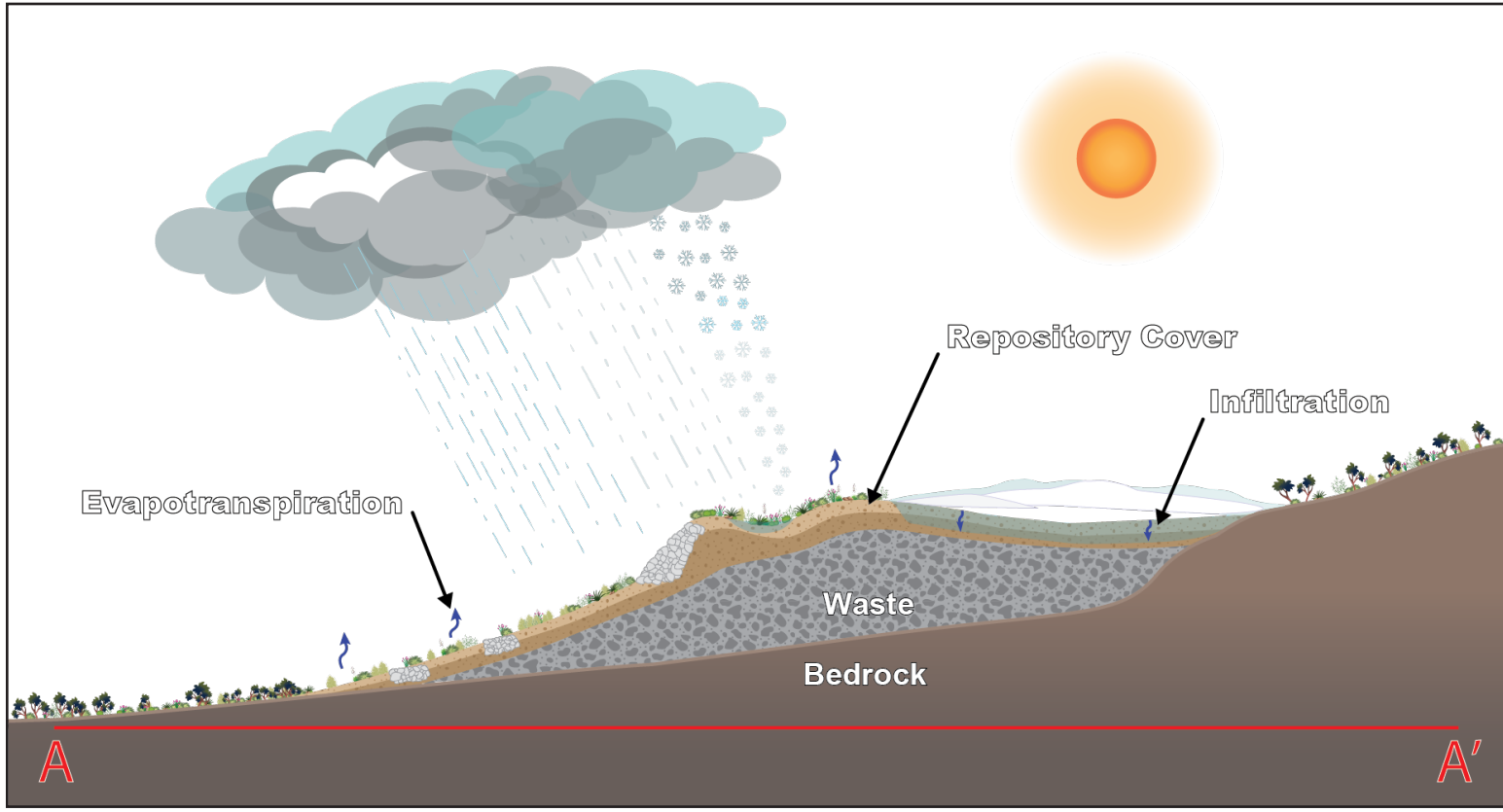
**Priscilla Tom**  
U.S. EPA Community Involvement Coordinator  
(505) 240-0093  
[tom.priscilla@epa.gov](mailto:tom.priscilla@epa.gov)

**Lee Anna Martinez-Silversmith**  
Navajo Nation Project Manager  
(928) 551-2360  
[lamartinez@navajo-nns.gov](mailto:lamartinez@navajo-nns.gov)

USEPA Navajo Abandoned Uranium Mine webpage: [www.epa.gov/navajo-nation-uranium-cleanup](http://www.epa.gov/navajo-nation-uranium-cleanup)



Potential waste repository site near CR-1.



Cross section of potential repository near CR-1.

