

Background

The impacts of climate change and disasters are not experienced evenly within and across communities. Social vulnerabilities affect how different populations experience hazards and who bears the burdens. To address these inequities, **resilience planning must be culturally appropriate, participatory, and responsive to local needs.**

The Equitable Resilience Builder (ERB) offers a guided process to support local resilience practitioners in integrating equity into their planning.

ERB Process



Figure 1. The five sections of ERB.

ERB is a nuanced 5-step framework crafted to seamlessly integrate equity into the fabric of local resilience efforts. Each step is designed for adaptability, allowing users to select and customize activities to their community's unique landscape. Through the ERB's process, teams commit to equity-driven practices: from inclusive planning and community engagement to assessing vulnerabilities and strategizing equitable outcomes. This approach ensures that every activity, whether a workshop or a reflection exercise, contributes to building resilience that serves the entire community.

Empowering Local Knowledge

Empowering local knowledge within the Equitable Resilience Builder (ERB) is a commitment to equity in resilience planning. The tool places community members' lived experiences and local intelligence at the heart of identifying hazards, risks, and threats – understanding that these local voices are crucial in painting an accurate picture of current and anticipated challenges.

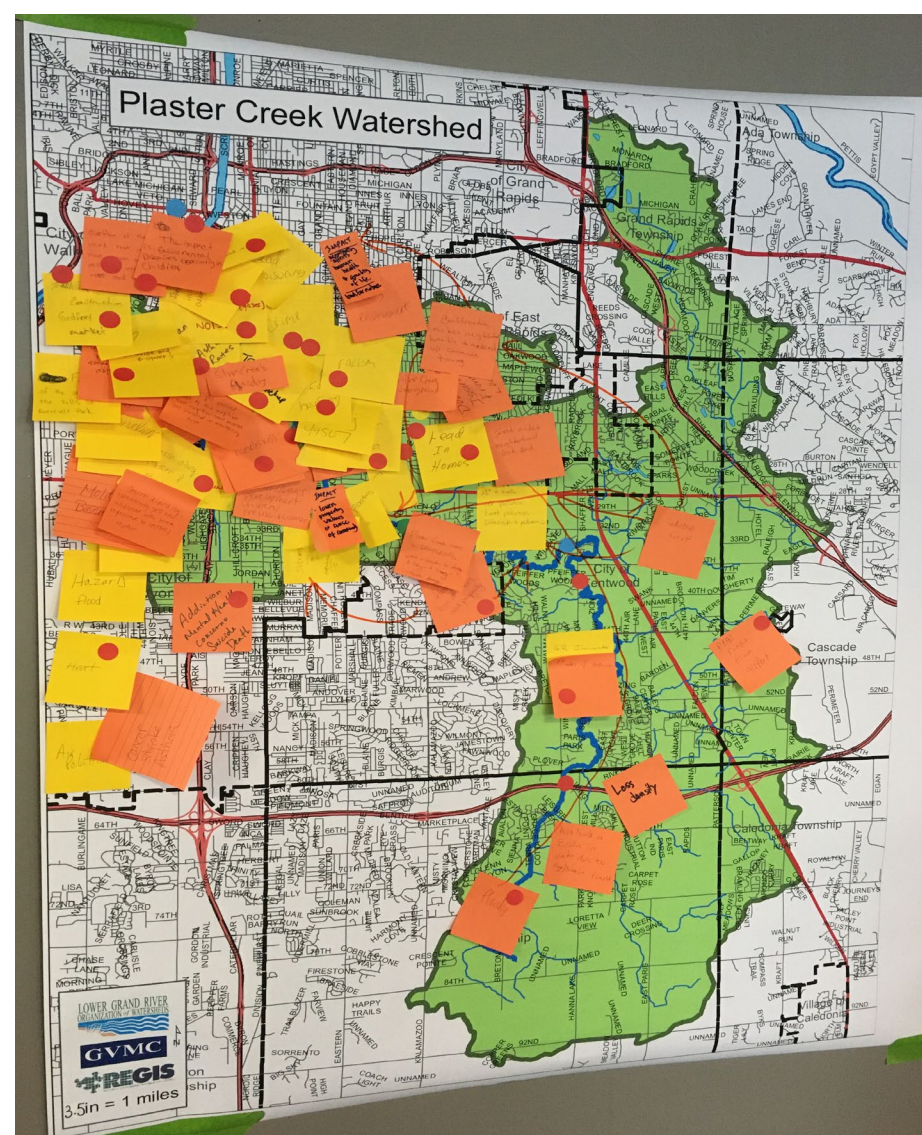


Figure 2. A map of Plaster Creek with local insights.

By prioritizing local knowledge and supporting it with optional scientific data, the ERB ensures that planning is grounded in the reality of those most affected by policy decisions. The participatory mapping exercise within the 'Assess' phase is a testament to this approach. The exercise invites residents to map their experiences directly, which is empowering for marginalized groups often overlooked in traditional planning. This inclusion is vital for promoting equity, allowing for a deeper understanding of how hazards intersect with issues of inequality.

How ERB Centers Equity

ERB centers equity in resilience planning processes by guiding users to:



Figure 3. Ways that ERB centers equity.

What's Next for ERB

The ERB's advancement will be marked by a website launch and journal article publications, accompanied by informative presentations and training webinars. Continuous improvement will be driven by collecting user feedback, ensuring the tool remains responsive and effective in fostering equitable resilience.

Disclaimer: The views expressed in this poster are those of the author(s) and do not necessarily represent the views or policies of the U.S. Environmental Protection Agency (EPA). This poster has been reviewed in accordance with EPA policy and approved for publication.