

APRIL 2024

EPA Proposes Cleanup at Honeywell DE Valley Works Facility

The **U.S. Environmental Protection Agency** (EPA) prepared a Statement of Basis to solicit public comments on a proposed remedy for a portion of the Honeywell Delaware Valley Works Facility Site, also known as the former General Chemical Facility.

EPA will hold a 30-day comment period on the proposed remedy from **April 25 to May 25th, 2024**. The public comment period is an opportunity to provide input on EPA's plan for cleanup. After the close of the public comment period, EPA will consider all comments and may modify its proposed remedy based on the public comments. EPA will respond in writing to all relevant comments received during the comment period. Details on how to submit comments are found on page 3 of this fact sheet. To view the Statement of Basis and full descriptions of the proposed remedy, please visit www.epa.gov/hwcorrectiveactioncleanups/documents-reports-and-photographs-chemtrade-solutions-llc-formerly or scan the QR code.



Areas Affected by the Proposed Remedy

The proposed remedy addresses the Delaware River shoreline and nearshore sediments, **Solid Waste Management Unit** (SWMU) 9 soil and groundwater, and the **South Plant South Parcel** (SPSP) groundwater. Previously, EPA issued a Final Decision and Response to Comments in 2016 to address only soil at the SPSP.

The facility is being addressed by EPA's Corrective Action Program¹ under the Solid Waste Disposal Act, as amended by the **Resource Conservation and Recovery Act** (RCRA) of 1976. For more information about the history of the facility and past EPA actions, scan the QR code or visit:

www.epa.gov/hwcorrectiveactioncleanups/hazardous-waste-cleanup-chemtrade-solutions-llc-formerly-general



¹ **What is the Corrective Action Program?** This program requires that owners and/or operators of facilities subject to certain provisions of RCRA investigate and address releases of hazardous waste and hazardous constituents, usually in the form of soil or groundwater contamination, that have occurred at or from their property.

Upcoming Public Meeting

You are invited to learn more about EPA's proposed cleanup plan at the upcoming public meeting:

May 9, 2024

Claymont Public Library

400 Lenape Way

Claymont, DE 19703

6:00 – 7:30pm

This public meeting is an opportunity to meet the site team and ask questions. All official public comments regarding the Statement of Basis must be submitted via postal mail or email.

The Statement of Basis and other site documents can also be viewed with assistance on a public computer at:

Claymont Public Library

400 Lenape Way

Claymont, DE 19703

Phone: (302) 798-4164

EPA's Proposed Remedy

EPA's overall proposed remedy includes:

- An engineered cover system at SWMU 9
- A Technical Impracticability Zone and long-term groundwater monitoring for SWMU 9 and SPSP groundwater
- Future site use restrictions through Institutional Controls
- A sediment cap for the shoreline and nearshore sediment

EPA's proposed remedy will protect human health and the environment by:

- Separating sediments and removing potential risks for exposure
- Reducing overall risk by capping the sediment and preventing contaminated sediment from getting into water bodies and mixing with non-contaminated sediments
- Installing a cap that will prevent migration of arsenic through the sediment
- Designing a cap for a permanent clean surface, able to withstand potential erosion

Additional information regarding the proposed remedy for each area are outlined on page three of this fact sheet. Full details of the proposed remedy can be found in Section 8 of the Statement of Basis.

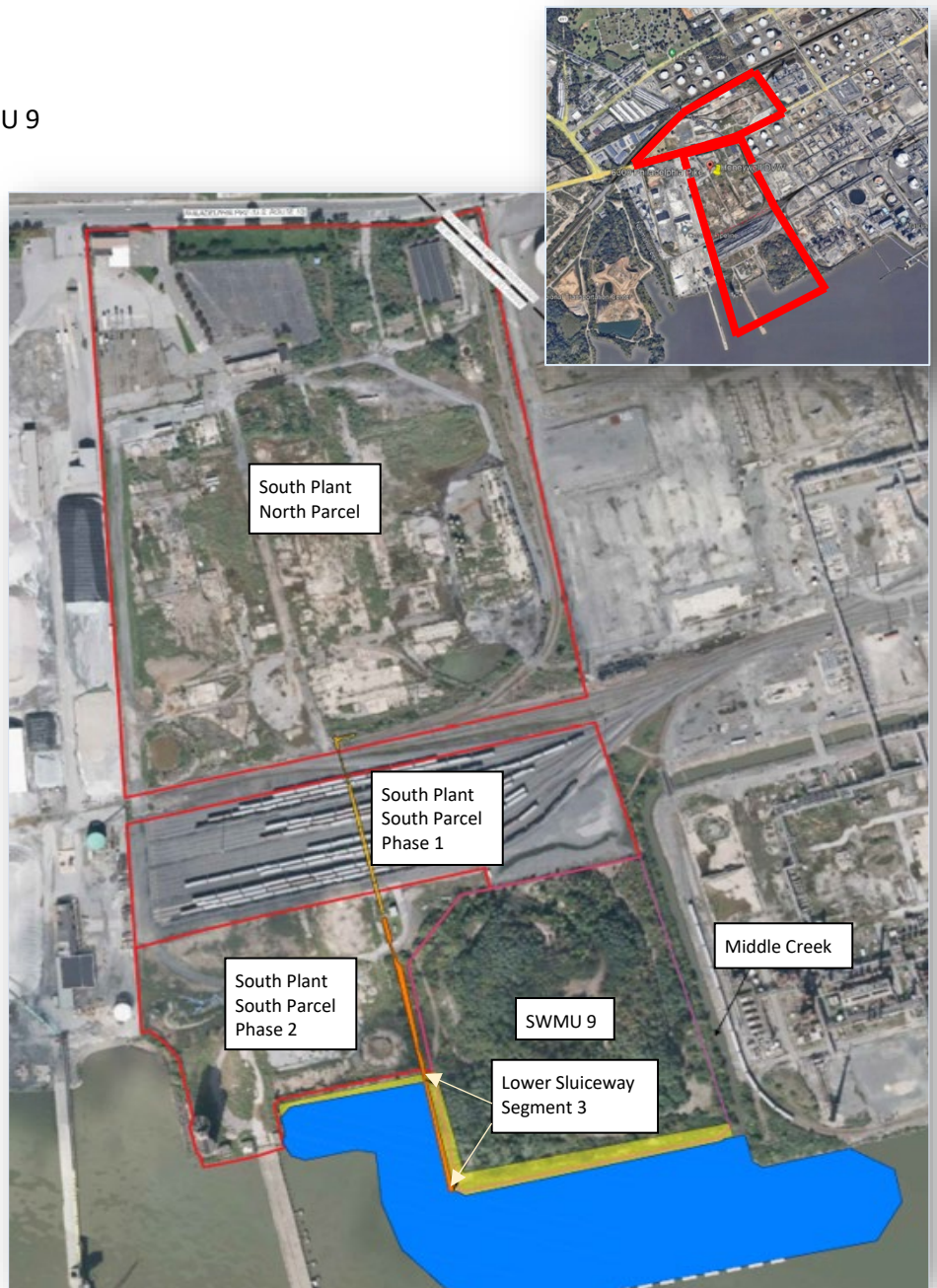


Figure 1: The above map shows the facility with each area affected by EPA's proposed remedy highlighted in a red border. The blue area at the bottom indicates the approximate nearshore sediment cap area. The yellow area above the blue area represents the approximate shoreline cap area. The smaller map in the top right corner shows

SWMU 9

- Install and maintain a cover system, or a cap.
 - This cap will reduce or eliminate hazardous waste, leachate, contaminated run-off, or hazardous waste decomposition products from going into the groundwater, surface water, and air.
 - The cap will be designed to prevent infiltration and keep contaminants from moving across different media (e.g., soil to groundwater).
- A Cap Management Plan will be created and include procedures to maintain the cap, a schedule for maintenance, and physical maintenance requirements.
- SWMU 9 soils will be stabilized, and necessary erosion and stormwater control components will be constructed.

SPSP and SWMU 9 Groundwater

- Establish a **Technical Impracticability (TI) Zone**
 - A TI Zone is an area where EPA recognizes that it may not be possible to restore groundwater to beneficial use from an engineering perspective. In these cases, EPA may waive some requirements and establish alternative, protective remedial strategies.
 - EPA established alternative remedial approaches in consideration of the TI Zone: cap SWMU 9 and SPSP soils to reduce infiltration into underlying fill material, treat the groundwater over the area of sediment where groundwater discharges into the Delaware River, conduct long-term groundwater monitoring, and implement groundwater and land use restrictions.

Delaware River Shoreline and Nearshore Sediments

- Construct a multi-layer capping system consisting of an isolation layer, filter layer, and armor layer over a 12.4-acre area of nearshore sediments.
- The area of the cap is defined by delineation of arsenic and pesticide concentrations to site-specific risk-based remediation goals and limits of the shallow nearshore environment.
- Remediation of the remaining 335-foot portion of the Lower Sluiceway (“Segment 3”)

How to Submit Public Comments

There are two ways to submit comments during the 30-day public comment period.

1. Email comments to Christine Kimak: kimak.christine@epa.gov
2. Mail in comments via postal mail, postmarked no later than **May 25, 2024** to:

EPA Region 3
Attn: Christine Kimak (3LD11)
1600 John F. Kennedy Blvd.
Philadelphia, PA 19103

EPA Contact Information

Christine Kimak

Physical Scientist

EPA Region 3 (3LD11)
1600 John F. Kennedy Blvd.
Philadelphia, PA 19103
(215) 814-2798
kimak.christine@epa.gov

Katie Page

Community Involvement Coordinator

EPA Region 3 (3RA22)
1600 John F. Kennedy Blvd.
Philadelphia, PA 19103
(215) 814-2409
page.katherine@epa.gov

Enoch Bang

Community Involvement Coordinator

EPA Region 3 (3RA22)
1600 John F. Kennedy Blvd.
Philadelphia, PA 19103
(215) 814-5516
bang.enoch@epa.gov

About the Honeywell DE Valley Works Facility

The Facility consists of approximately one hundred acres divided by Philadelphia Pike (U.S. Route 13), which is portioned into two plants. There is the North Plant and the South Plant, with the South Plant divided into South Plant North Parcel and South Plant South Parcel.

Site operations began over a 100 years ago, in 1913. The two plants were originally owned by Allied Chemical Corporation, which is now Honeywell. Drawbridge currently owns the South Plant while Honeywell owns the North Plant and SWMU 9. Manufacturing operations ceased at the North Plant in 2019 and at the South Plant in 2004. The North Plant is currently vacant, while the South Plant North Parcel is currently being used by a trucking operation and the northern portion of the South Plant South Parcel includes a railcar storage yard.

Over its history, the DVW Facility manufactured various chemical products including pesticides (DDT and DDD), organic and inorganic acids, and specialty chemicals including boron trifluoride (BF3) and fluorosulfonic acid (FSA). For information about contaminants and their effects on human health, please visit the Agency for Toxic Substances and Disease Registry website for Toxicological Profiles: www.atsdr.cdc.gov/toxprofiledocs/index.html or scan the QR code.

