



# Gulf of Mexico Division

## Protecting and Preserving the Gulf of Mexico

### Who We Are

The Gulf of Mexico Division (GMD) is one of the EPA's Great Water Body Programs whose geographic focus is on the major environmental issues of the Gulf of Mexico region and its watershed. The GMD is committed to voluntary, nonregulatory actions and solutions that are based on sound scientific and technical information as shown by our work with partners and the public.

Our program consists of two branches of experienced staff:



#### Science Integration and Analysis Branch

Promoting and implementing science to benefit the Gulf of Mexico and its communities.



#### Partnerships Branch

Encouraging positive behavioral practices and promoting awareness of resources, technologies and environmental initiatives.

### What We Do

The Science Integration and Analysis Branch and the Partnerships Branch work with each of the five U.S. Gulf Coast states and other stakeholders in the Gulf of Mexico Watershed including the six Mexican Gulf Coast states on projects that support the following priority areas:



#### Water Quality

Improve understanding of water quality conditions and/or improve water quality



#### Education and Outreach

Promote and support environmental education and outreach



#### Habitat Restoration

Restore, enhance and/or protect habitat acreage

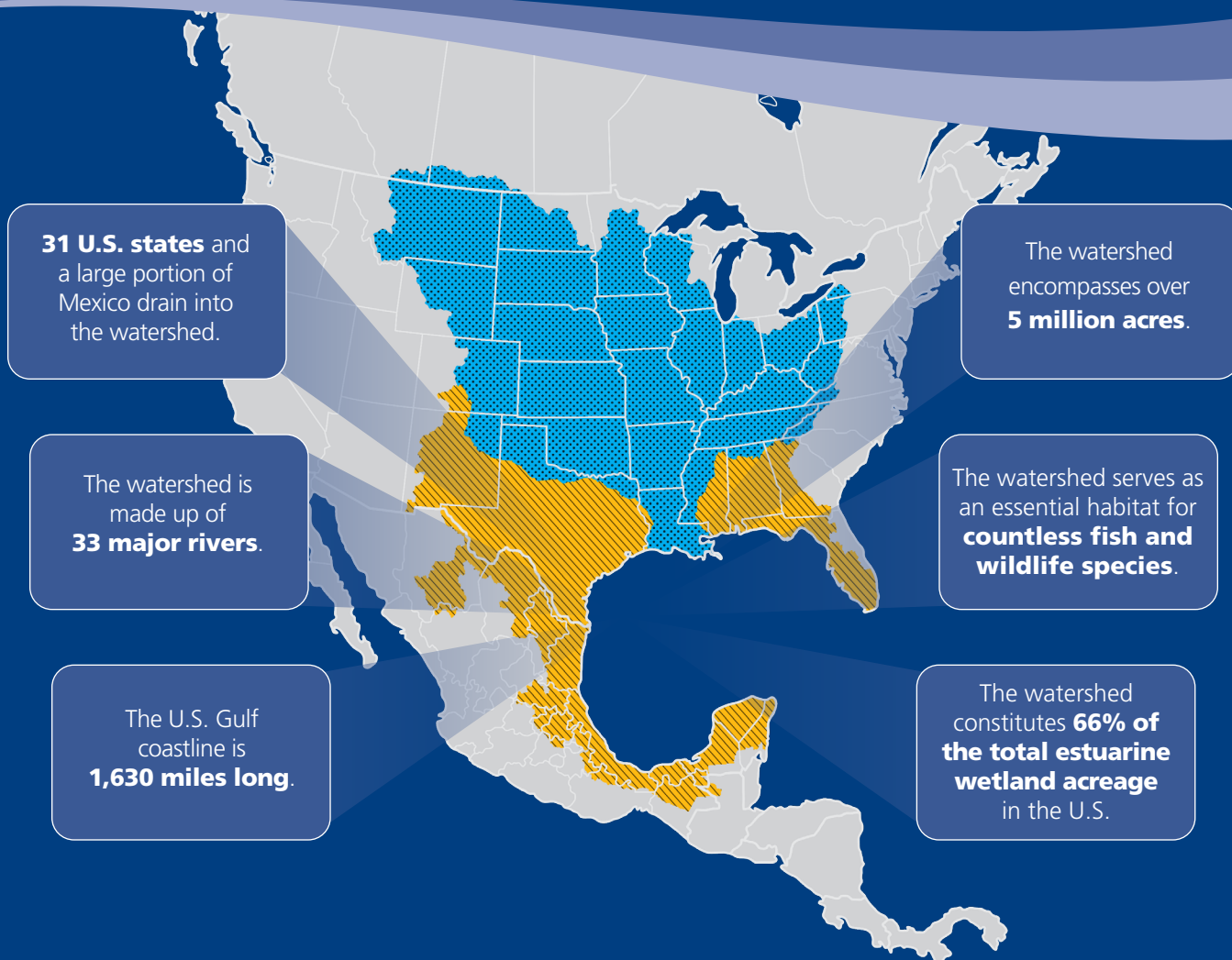


#### Community Resilience

Improve understanding of vulnerabilities and strengthen resilience

The EPA's Gulf of Mexico Division is focused on the health, productivity and restoration of the Gulf of Mexico and the communities that rely on this national resource.

The Gulf of Mexico is recognized worldwide as a vast and productive body of water with tremendous ecological, economic and social value.



**31 U.S. states** and a large portion of Mexico drain into the watershed.

The watershed encompasses over **5 million acres**.

The watershed is made up of **33 major rivers**.

The watershed serves as an essential habitat for **countless fish and wildlife species**.

The U.S. Gulf coastline is **1,630 miles long**.

The watershed constitutes **66% of the total estuarine wetland acreage** in the U.S.

## Gulf of Mexico Watershed

 Mississippi River Drainage Basin

 Gulf Drainage Basin (Non Mississippi)



### Gulf of Mexico Division

2510 14th Street, Suite 1212, Gulfport, MS 39501  
(P) 228-679-5915 (F) 228-679-5921

Publication Number: 904 F24 001



Learn more:

[www.epa.gov/gulfofmexico](http://www.epa.gov/gulfofmexico)