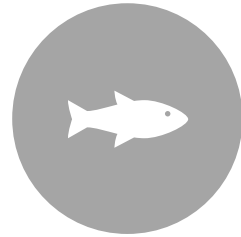


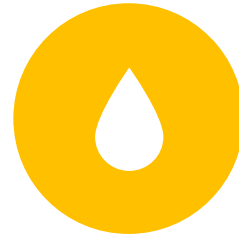
Outline of the Cumulative Impact Assessment



AIR MODELING



**FISH TISSUE
SAMPLING AND
ANALYSIS**



**WATER SAMPLING
AND ANALYSIS**



**SOIL SAMPLING
AND ANALYSIS**

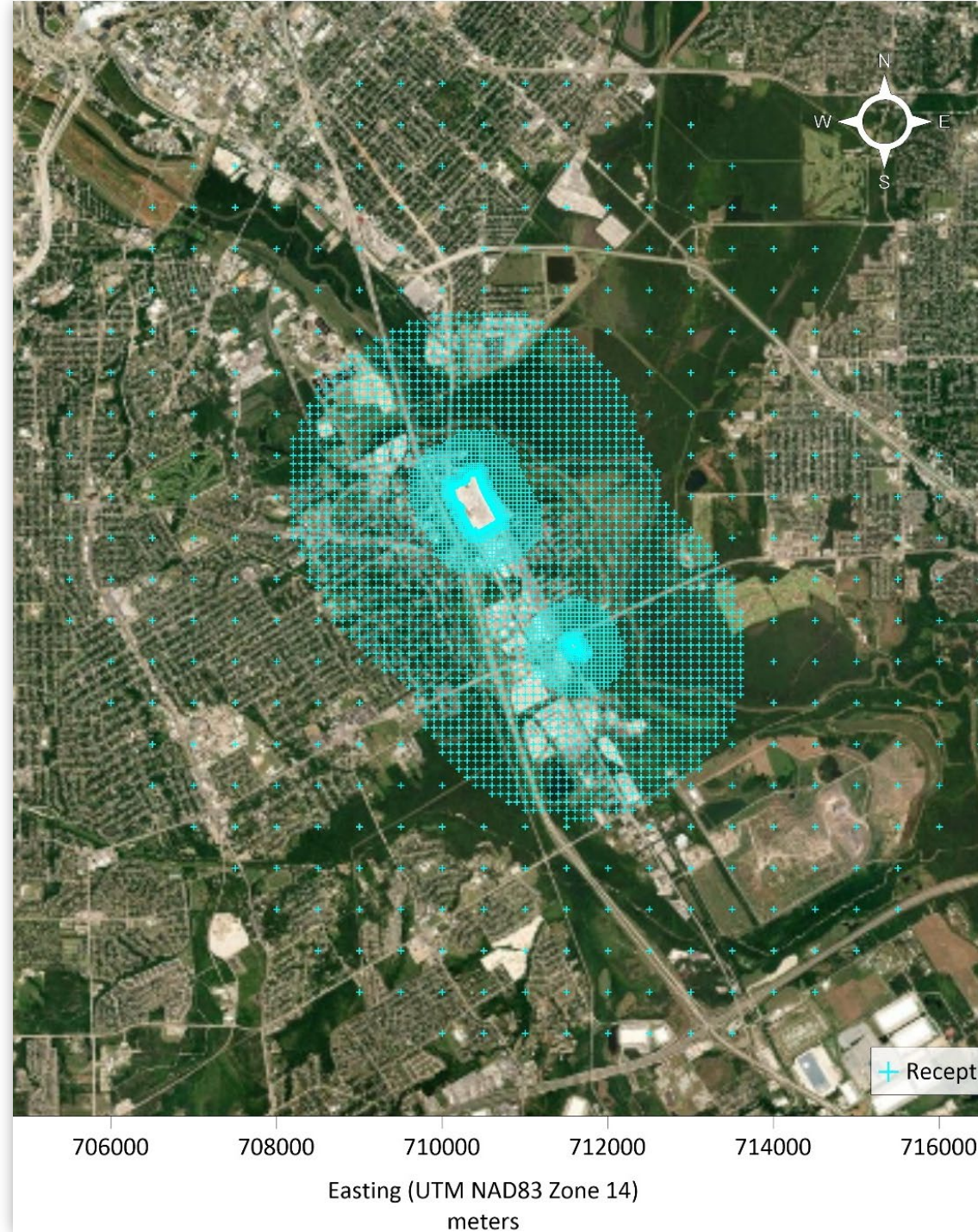


**CUMULATIVE
IMPACT
ASSESSMENT
REPORT**

Air Modeling

- Air modeling will be performed to determine if the recently adopted Concrete Batch Plant (CBP) Standard Permit (SP) from TCEQ is protective of the NAAQS when more than one facility is in operation in an area
- Modeling will also take into consideration the emissions from mobile sources (traffic and truck idling onsite) and other industrial facilities in the area
- Air toxics dispersion modeling and deposition modeling
- Characterize total risk of the facility emissions plus nearby permitted air sources
- Modeling will be conducted for PM10, PM2.5, Silica, and Nickel

U.S. Environmental Protection Agency





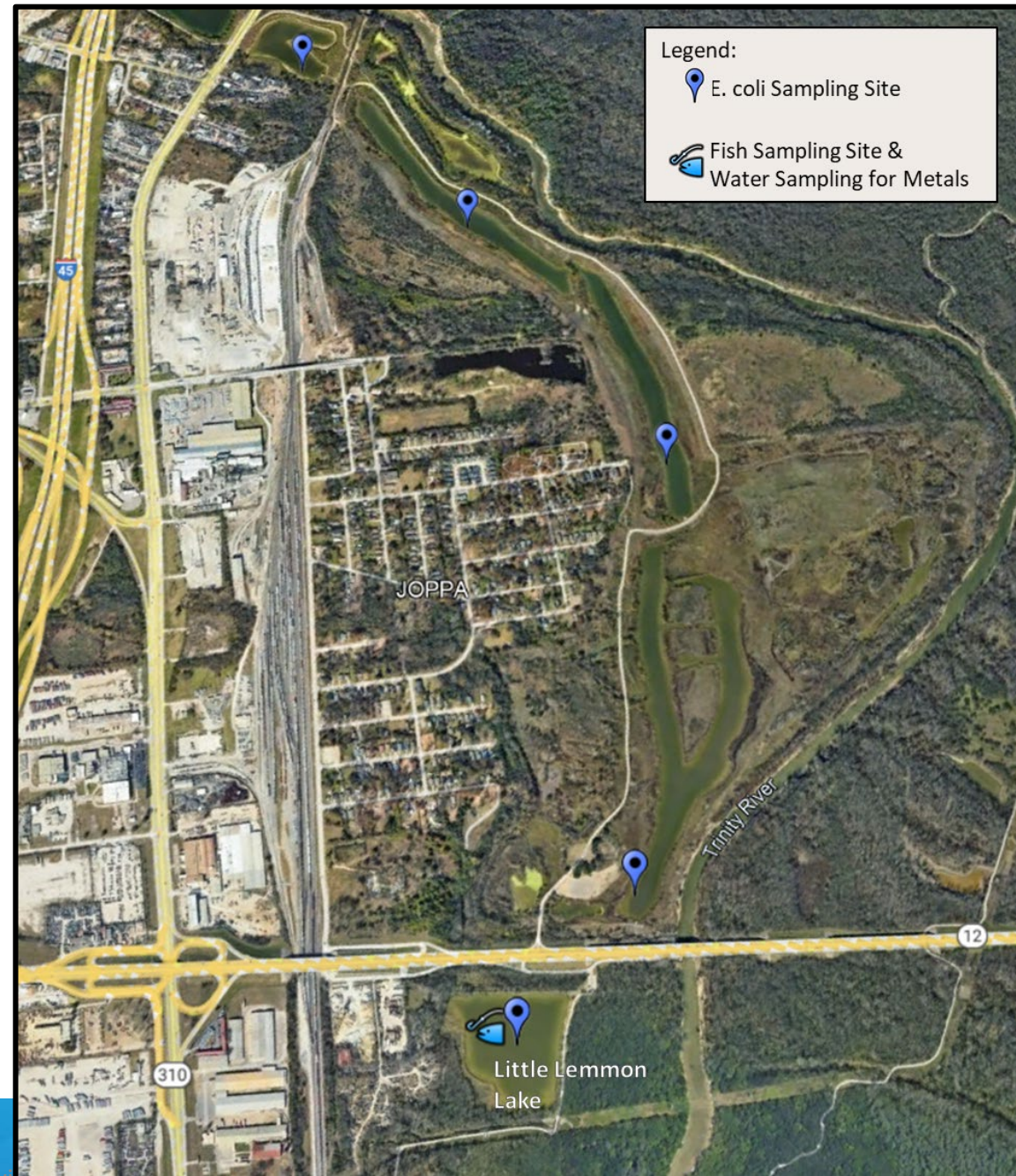
Water Sampling and Fish Tissue Analysis

- Fecal Coliform Bacteria (*E. coli*) tested in waters where recreation is likely.
- pH, alkalinity, dissolved oxygen, total suspended solids, and heavy metals tested at Little Lemmon Lake in Joppa.
- Fish that are likely to be consumed will be analyzed for mercury, lead, and nickel from Little Lemmon Lake in Joppa and Fish Trap Lake in West Dallas.



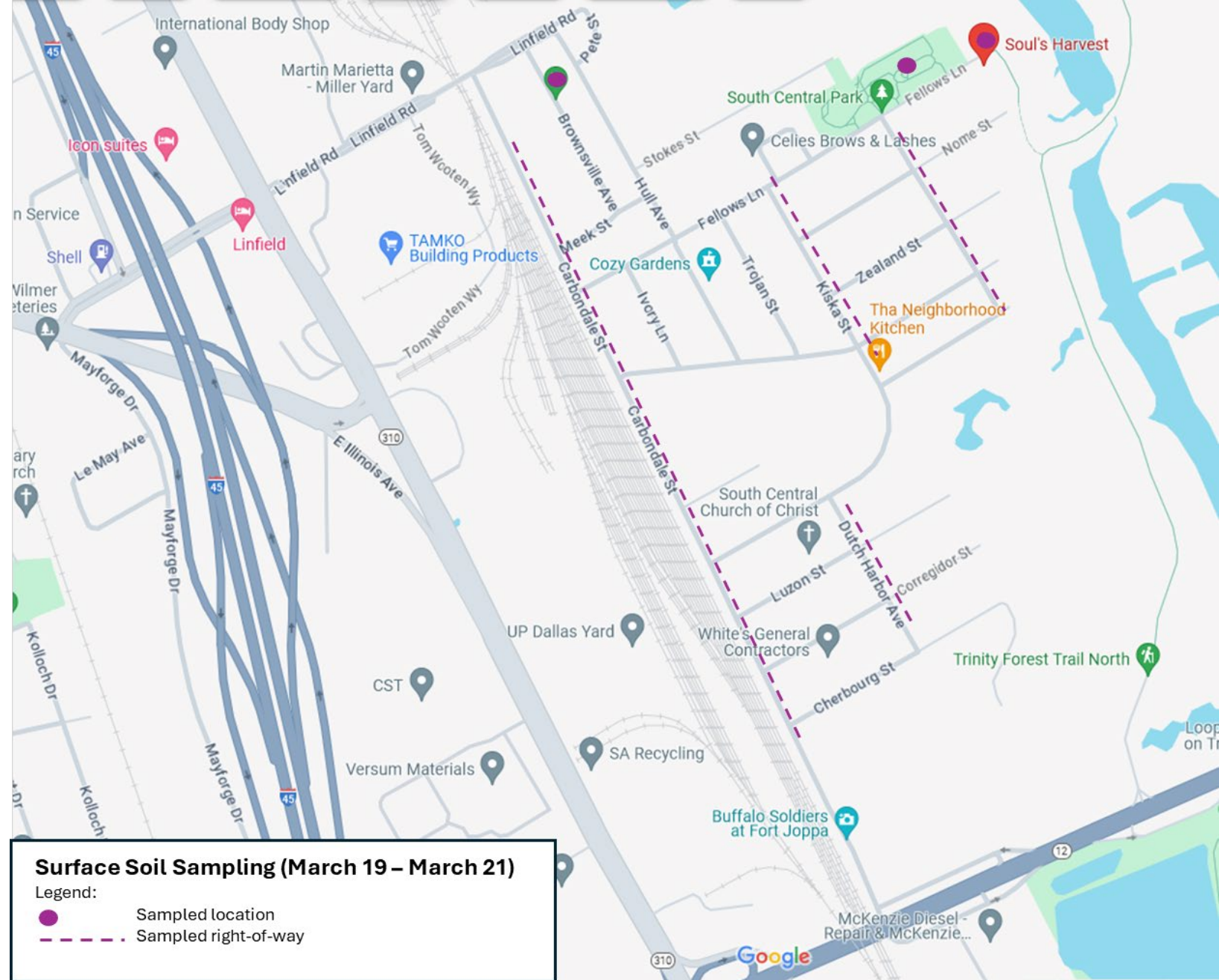
Water/Fish Sampling Locations

- 5 sites were sampled for E. coli and water quality parameters were recorded (pH, dissolved oxygen, turbidity, etc)
- Potential sources of pollution were noted during visual observations
- Little Lemmon Lake was tested for dissolved heavy metals (arsenic, cadmium, chromium, copper, lead, mercury, nickel, selenium, zinc)
- Fish likely to be consumed were caught and tissue was tested for heavy metals (lead, mercury, nickel)

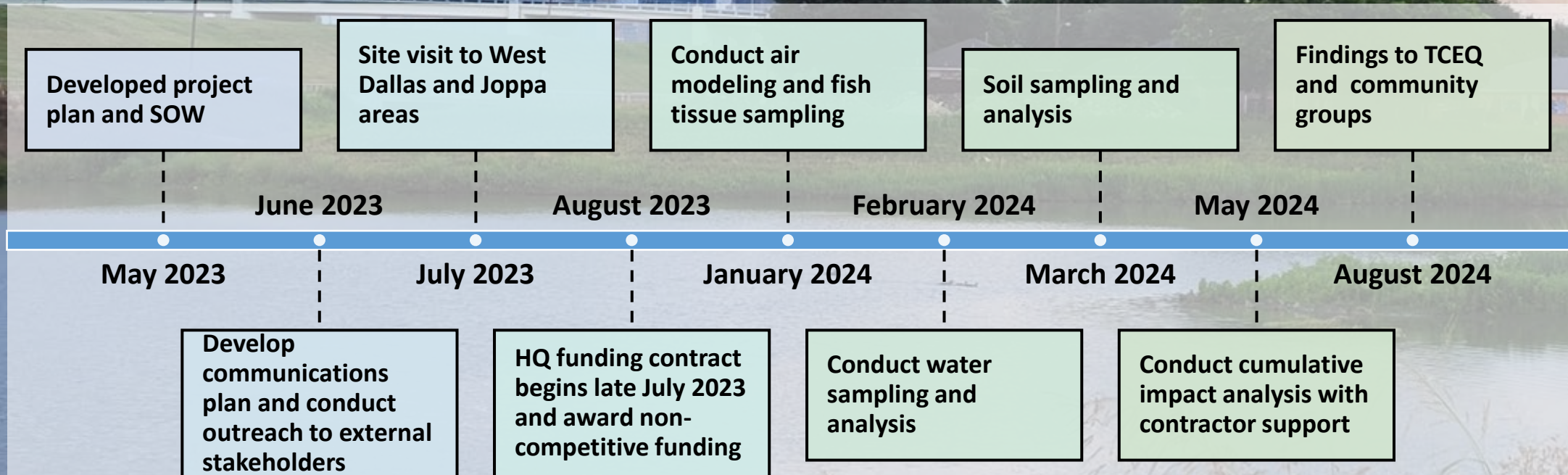


Soil Sampling and Analysis

- Soil samples will be collected in parks, schools, common areas or other EPA approved locations.
- Samples will be analyzed for metals, mercury, cyanide, pH, and VOAs.



Timeline





Contact Info:

Aimee Wilson, Environmental Scientist

U.S. EPA, Region 6 (ARPE)

Tel: (214) 665-7596

wilson.aimee@epa.gov

Ed Mekeel, Public Affairs Specialist

U.S. EPA, Region 6 (ORA-XG)

Tel: (214) 665-2252

mekeel.edward@epa.gov